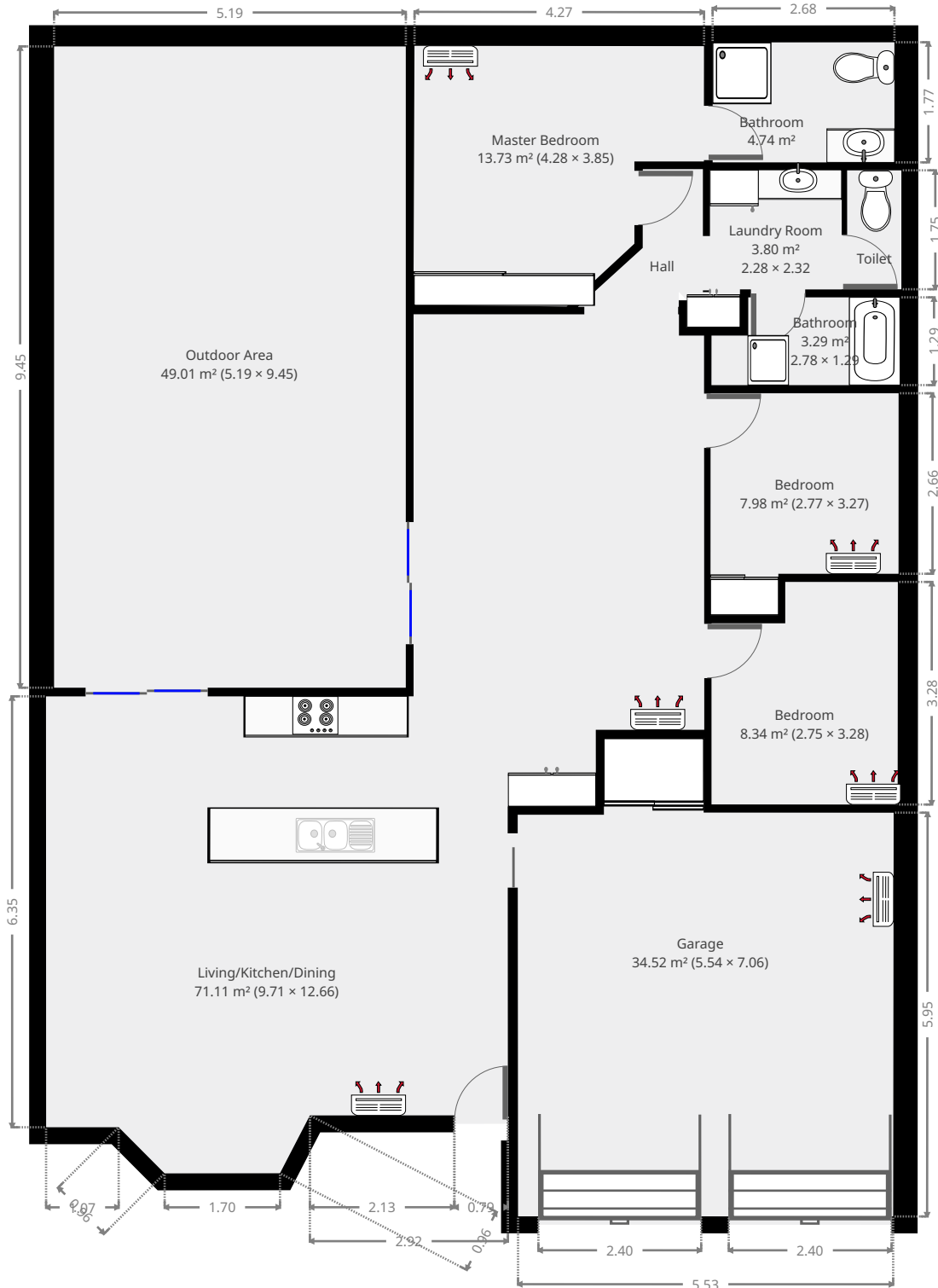


# 27 Permien Street

## Ground Floor



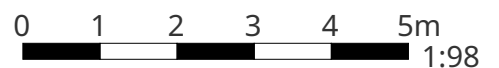
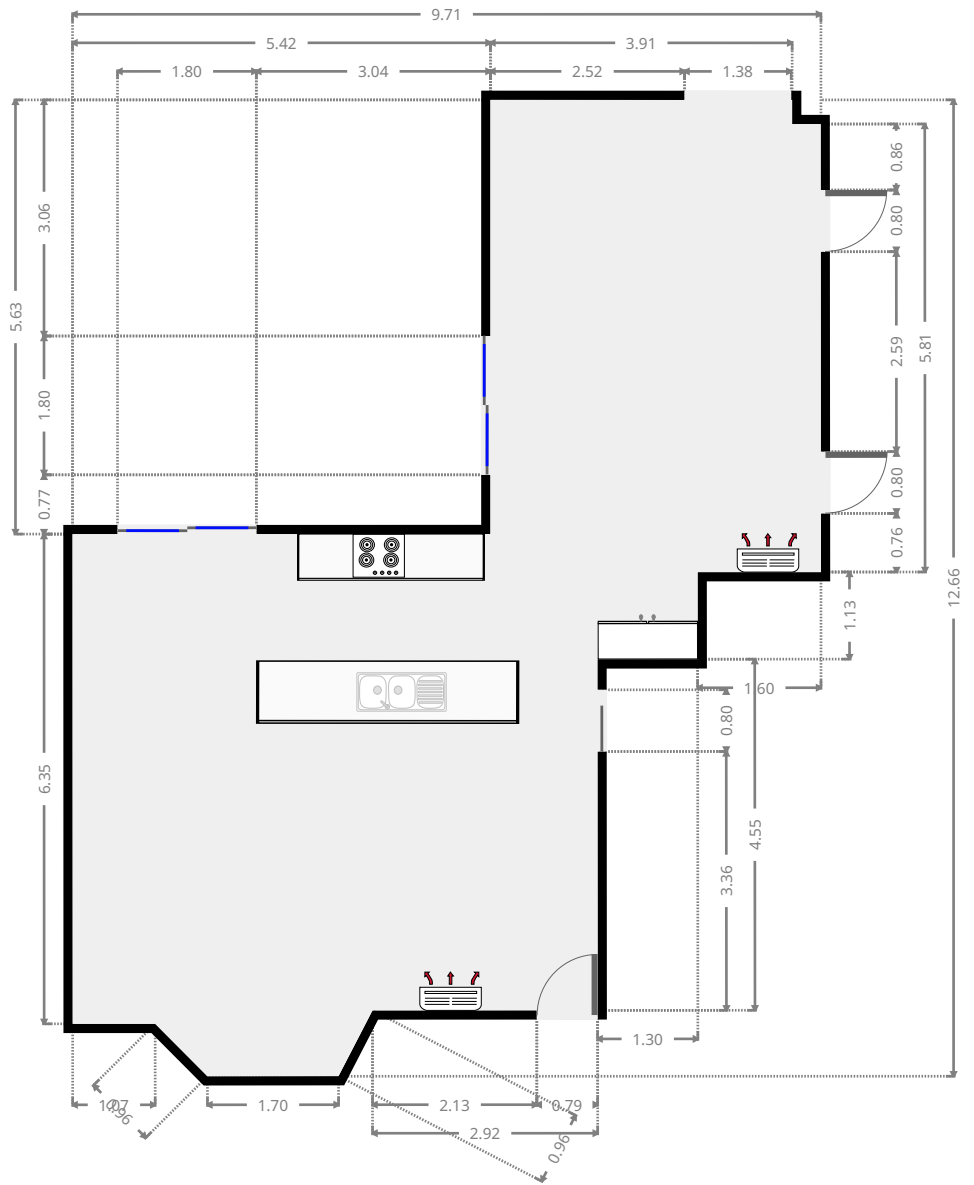
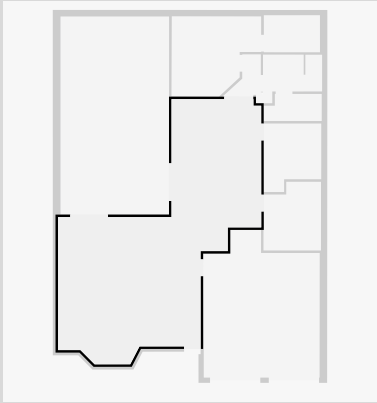
THIS FLOORPLAN IS PROVIDED WITHOUT WARRANTY OF ANY KIND. SENSOPIA DISCLAIMS ANY WARRANTY INCLUDING, WITHOUT LIMITATION, SATISFACTORY QUALITY OR ACCURACY OF DIMENSIONS.



# 27 Permien Street

## Living/Kitchen/Dining

Width: 9.71 m  
 Length: 12.66 m  
 Area: 71.11 m<sup>2</sup>  
 Perimeter: 43.99 m

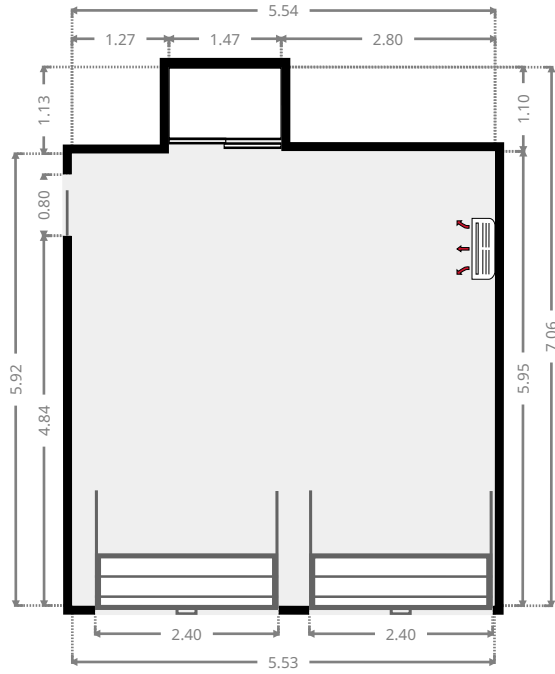
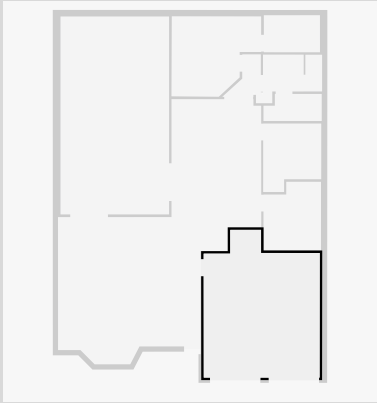


THIS FLOORPLAN IS PROVIDED WITHOUT WARRANTY OF ANY KIND. SENSOPIA DISCLAIMS ANY WARRANTY INCLUDING, WITHOUT LIMITATION, SATISFACTORY QUALITY OR ACCURACY OF DIMENSIONS.

# 27 Permien Street

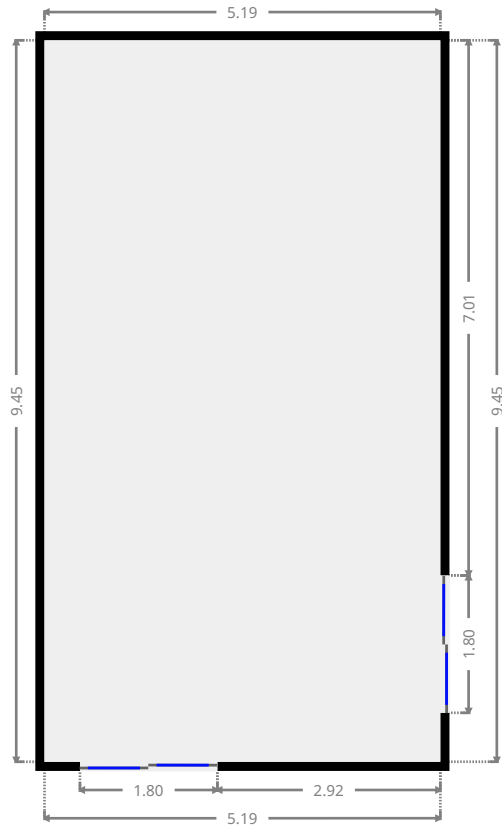
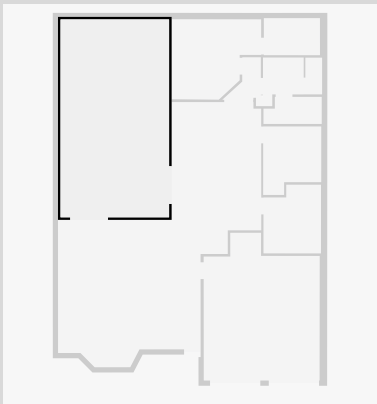
## Garage

Width: 5.54 m  
 Length: 7.06 m  
 Area: 34.52 m<sup>2</sup>  
 Perimeter: 25.18 m



## Outdoor Area

Width: 5.19 m  
 Length: 9.45 m  
 Area: 49.01 m<sup>2</sup>  
 Perimeter: 29.27 m

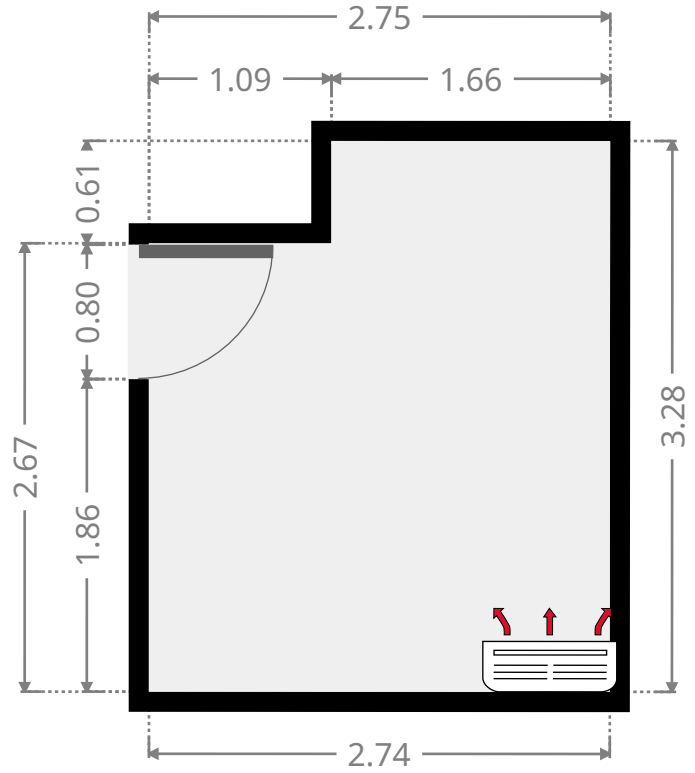
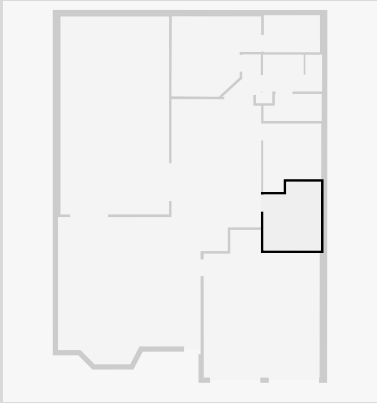


THIS FLOORPLAN IS PROVIDED WITHOUT WARRANTY OF ANY KIND. SENSOPIA DISCLAIMS ANY WARRANTY INCLUDING, WITHOUT LIMITATION, SATISFACTORY QUALITY OR ACCURACY OF DIMENSIONS.

# 27 Permien Street

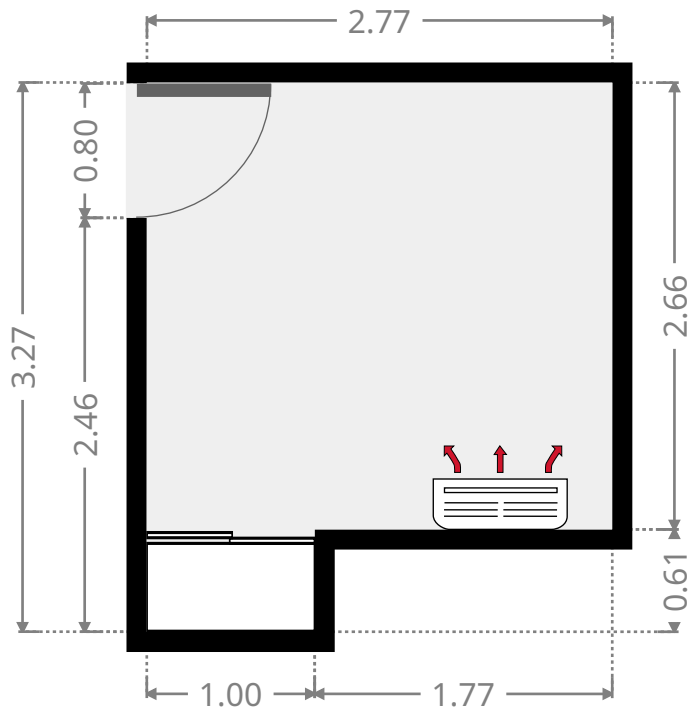
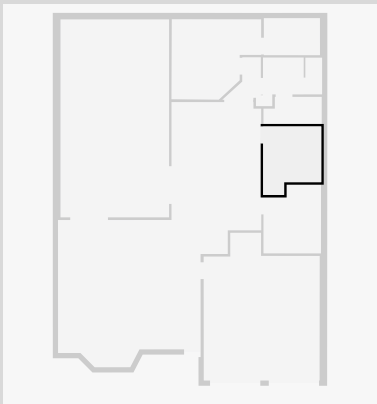
## Bedroom

Width: 2.75 m  
 Length: 3.28 m  
 Area: 8.34 m<sup>2</sup>  
 Perimeter: 12.05 m



## Bedroom

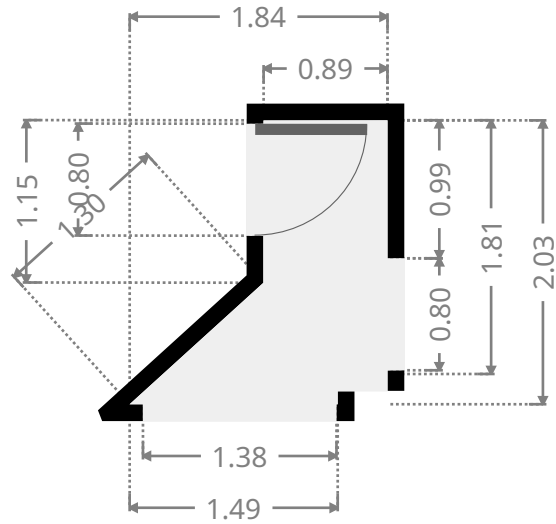
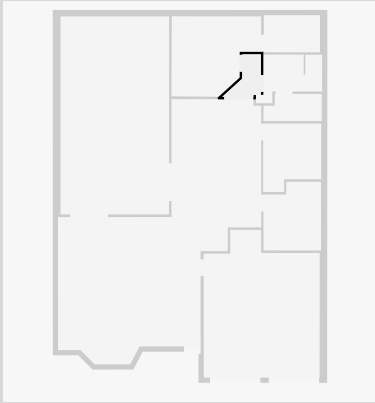
Width: 2.77 m  
 Length: 3.27 m  
 Area: 7.98 m<sup>2</sup>  
 Perimeter: 12.08 m



# 27 Permien Street

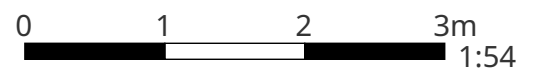
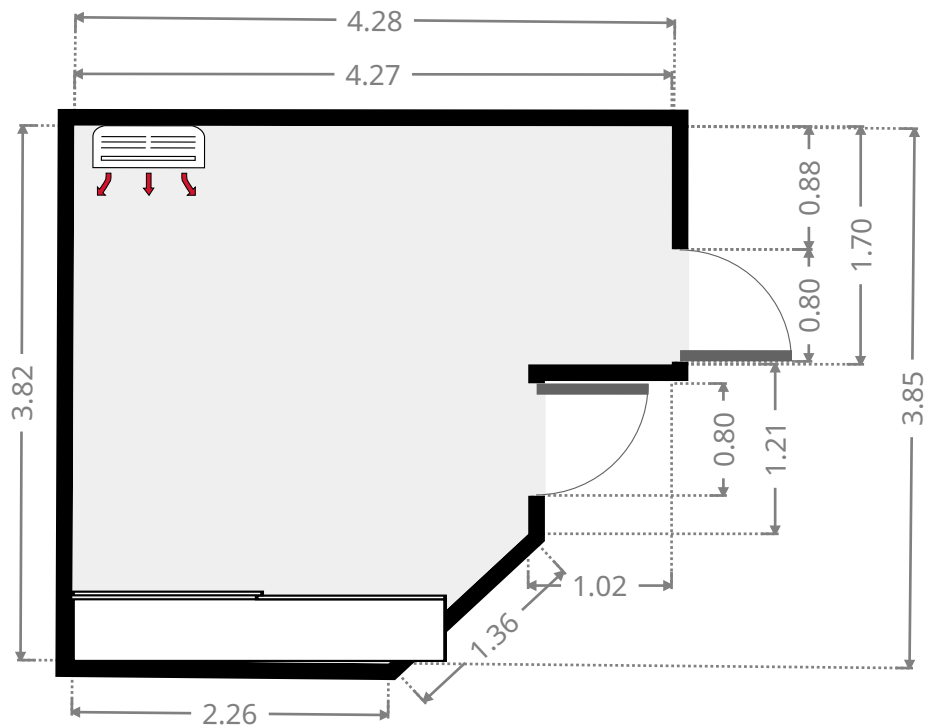
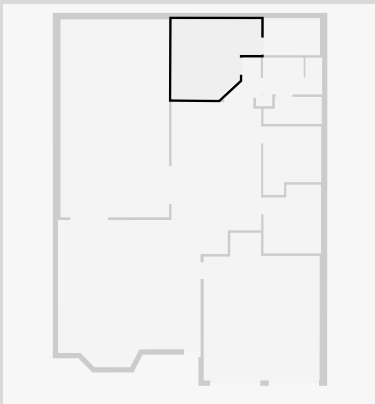
## Hall

Width:	1.84 m
Length:	2.03 m
Area	2.14 m <sup>2</sup>
Perimeter	7.21 m



## Master Bedroom

Width:	3.85 m
Length:	4.28 m
Area	13.73 m <sup>2</sup>
Perimeter	15.64 m

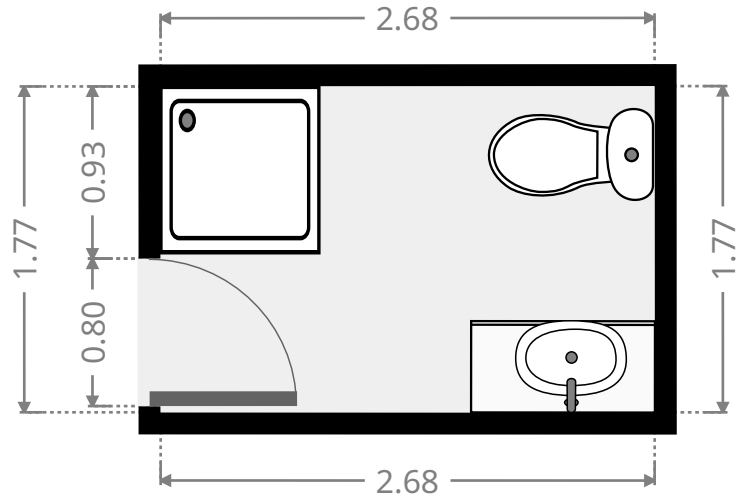
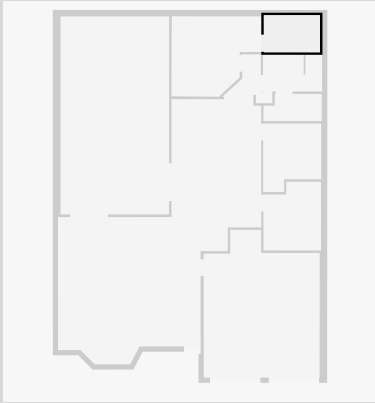


THIS FLOORPLAN IS PROVIDED WITHOUT WARRANTY OF ANY KIND. SENSOPIA DISCLAIMS ANY WARRANTY INCLUDING, WITHOUT LIMITATION, SATISFACTORY QUALITY OR ACCURACY OF DIMENSIONS.

# 27 Permien Street

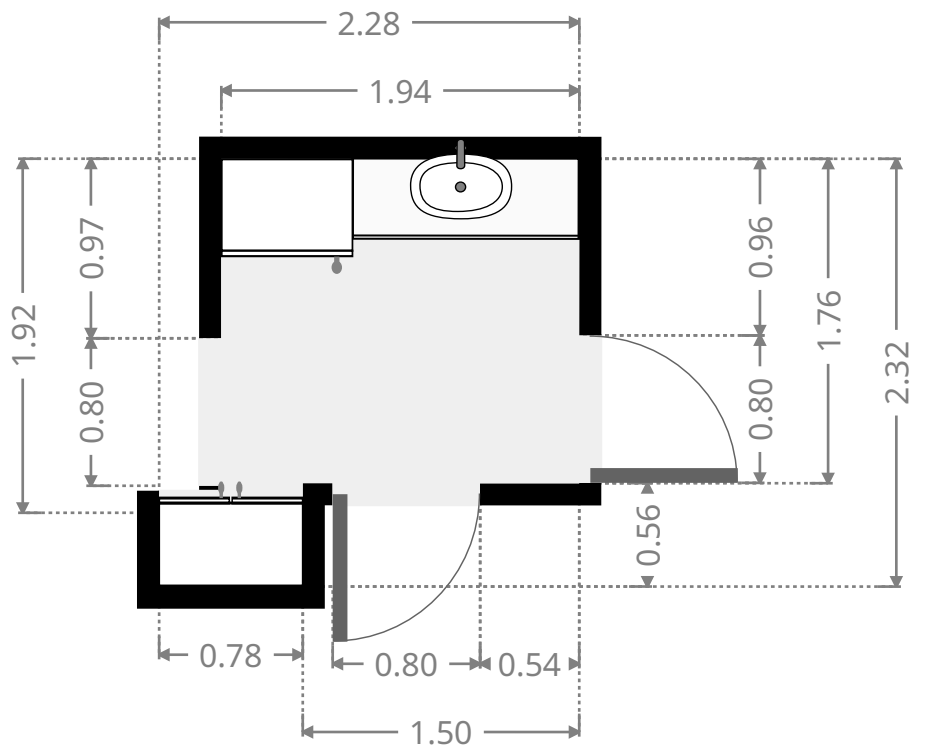
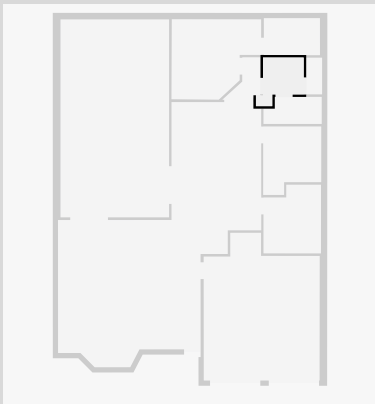
## Bathroom

Width: 1.77 m  
 Length: 2.68 m  
 Area: 4.74 m<sup>2</sup>  
 Perimeter: 8.90 m

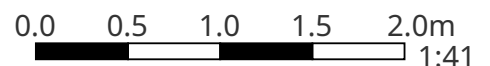


## Laundry Room

Width: 2.28 m  
 Length: 2.32 m  
 Area: 3.80 m<sup>2</sup>  
 Perimeter: 9.20 m



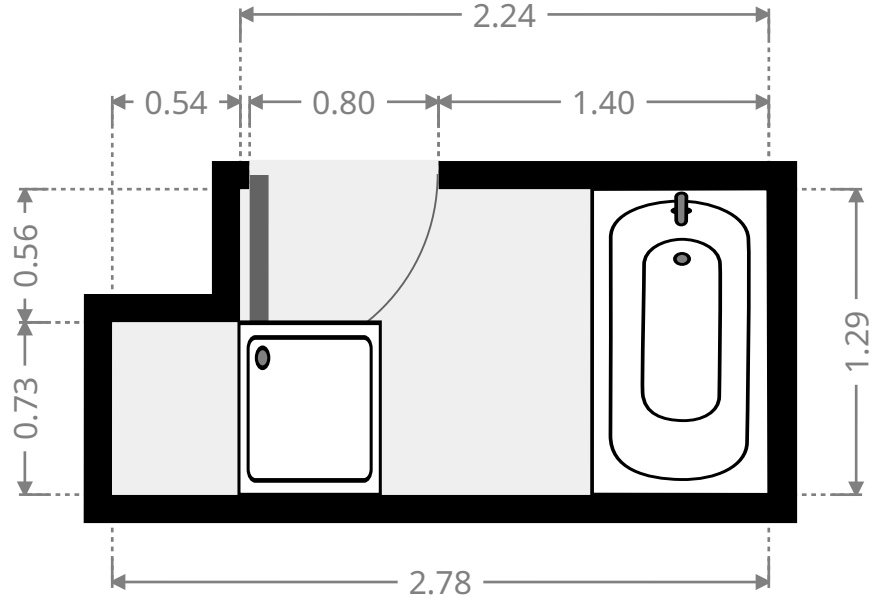
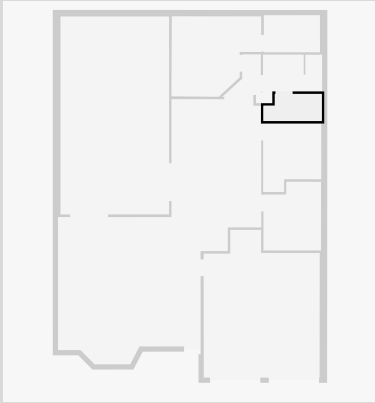
THIS FLOORPLAN IS PROVIDED WITHOUT WARRANTY OF ANY KIND. SENSOPIA DISCLAIMS ANY WARRANTY INCLUDING, WITHOUT LIMITATION, SATISFACTORY QUALITY OR ACCURACY OF DIMENSIONS.



# 27 Permien Street

## Bathroom

Width: 1.29 m  
Length: 2.78 m  
Area: 3.29 m<sup>2</sup>  
Perimeter: 8.15 m



## Toilet / Half Bath

Width: 0.80 m  
Length: 1.75 m  
Area: 1.40 m<sup>2</sup>  
Perimeter: 5.10 m

