

262 Hutton STREET

SUBMITTED BY

Ray White Rockhampton Casey
stockers@cqoz.com

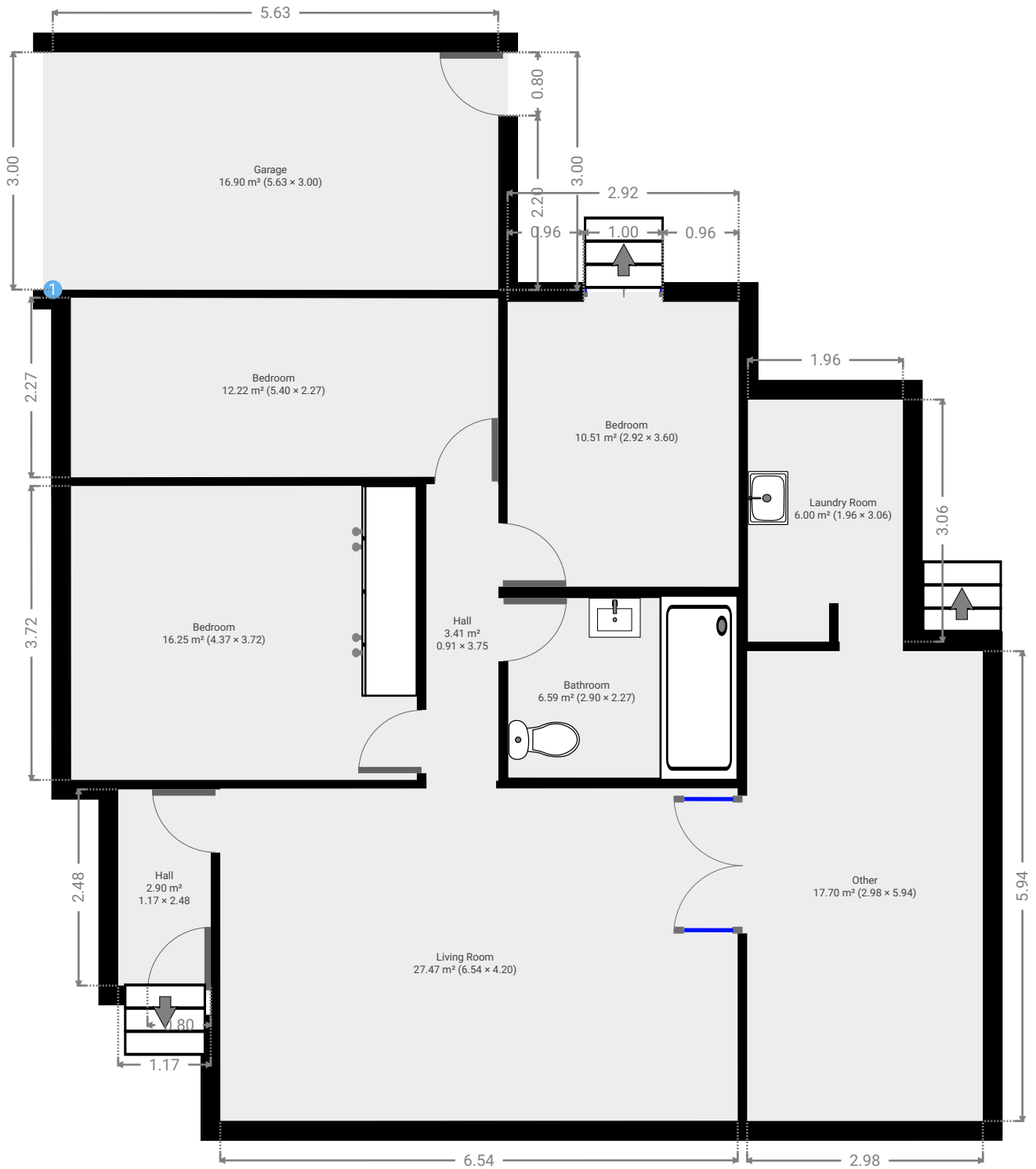
CREATED ON

2022-08-15

Floors

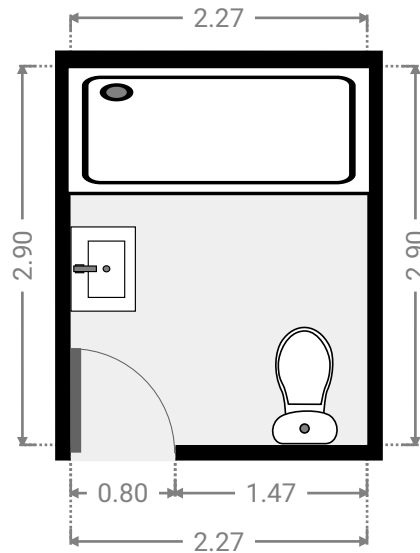
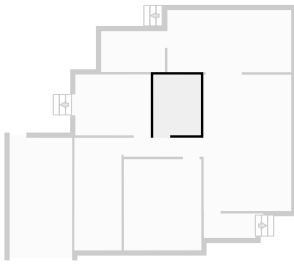
1

▼ Ground Floor



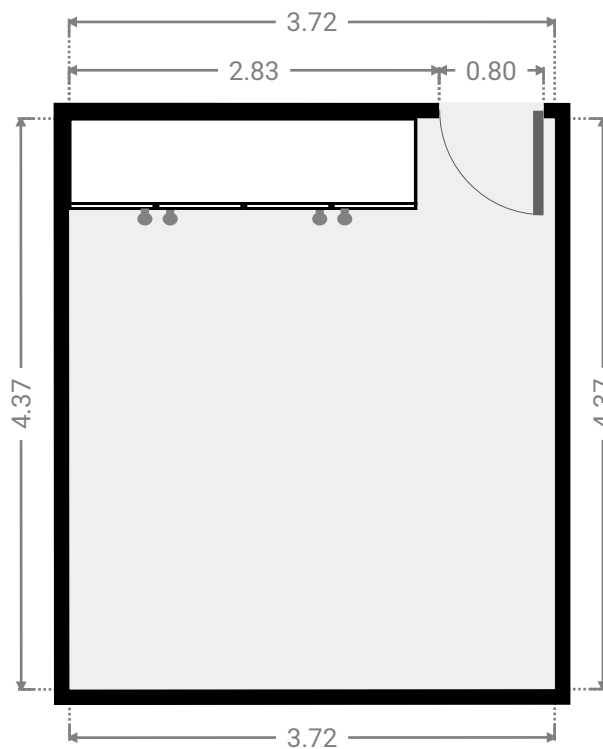
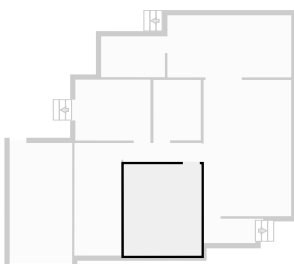
▼ **Bathroom**
Ground Floor

WIDTH: 2.27 m • LENGTH: 2.90 m
AREA: 6.59 m² • PERIMETER: 10.34 m



▼ **Bedroom**
Ground Floor

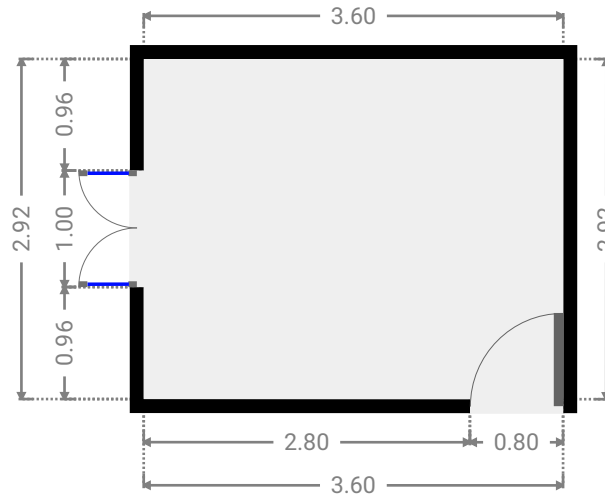
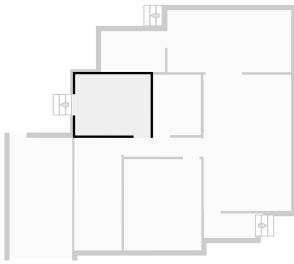
WIDTH: 3.72 m • LENGTH: 4.37 m
AREA: 16.25 m² • PERIMETER: 16.18 m



FLOORS: 1

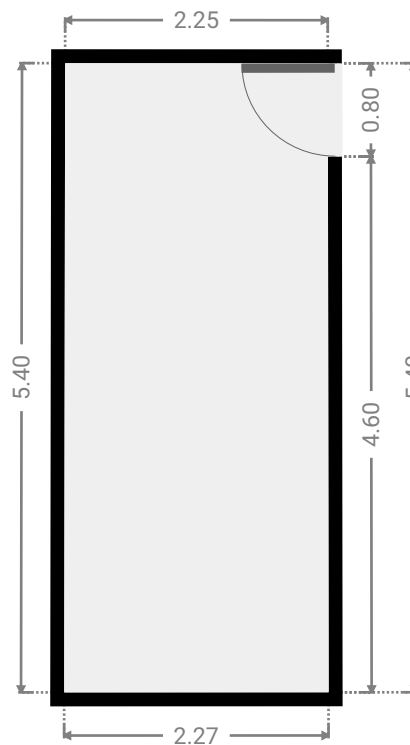
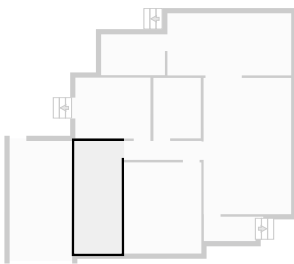
▼ **Bedroom**
Ground Floor

WIDTH: 3.60 m • LENGTH: 2.92 m
AREA: 10.51 m² • PERIMETER: 13.04 m



▼ **Bedroom**
Ground Floor

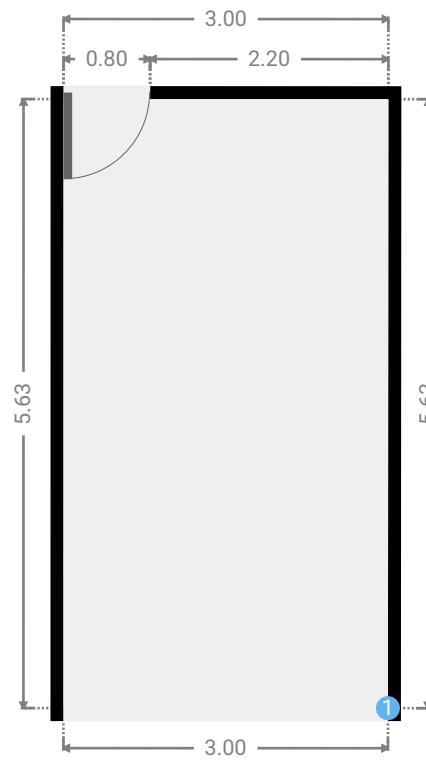
WIDTH: 2.27 m • LENGTH: 5.40 m
AREA: 12.22 m² • PERIMETER: 15.33 m



FLOORS: 1

▼ **Garage**
Ground Floor

WIDTH: 3.00 m • LENGTH: 5.63 m
AREA: 16.90 m² • PERIMETER: 17.26 m



▼ **Garage/Ground Floor**

1 **OPENING**

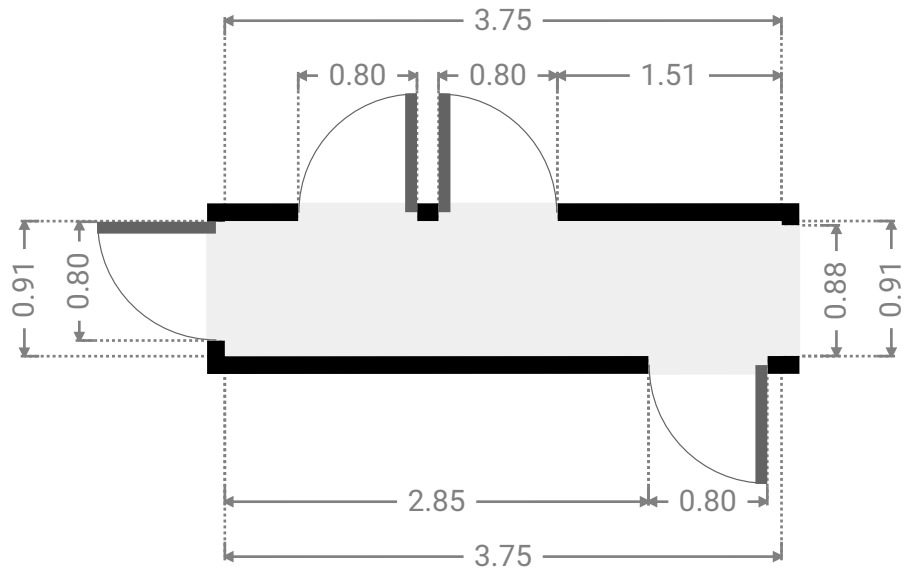
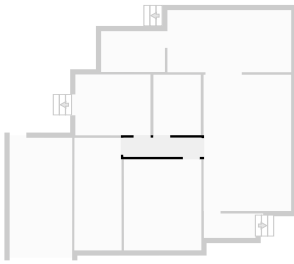
Height
0.00 m



FLOORS: 1

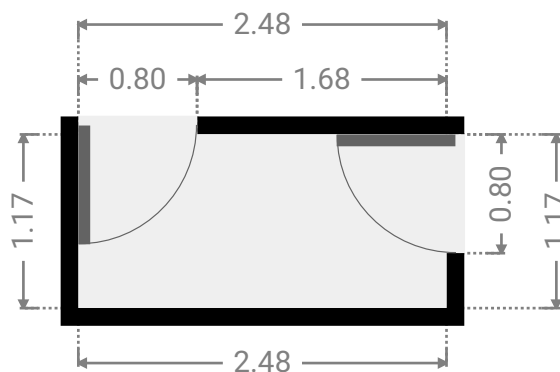
▼ Hall
Ground Floor

WIDTH: 3.75 m • LENGTH: 0.91 m
AREA: 3.41 m² • PERIMETER: 9.32 m



▼ Hall
Ground Floor

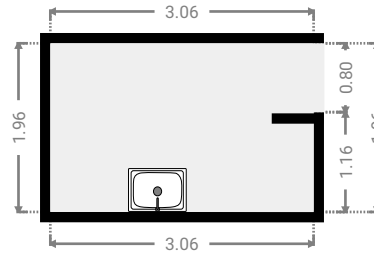
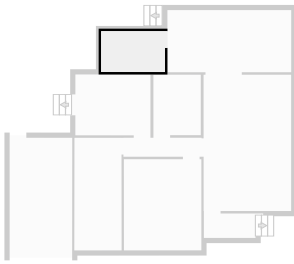
WIDTH: 2.48 m • LENGTH: 1.17 m
AREA: 2.90 m² • PERIMETER: 7.30 m



FLOORS: 1

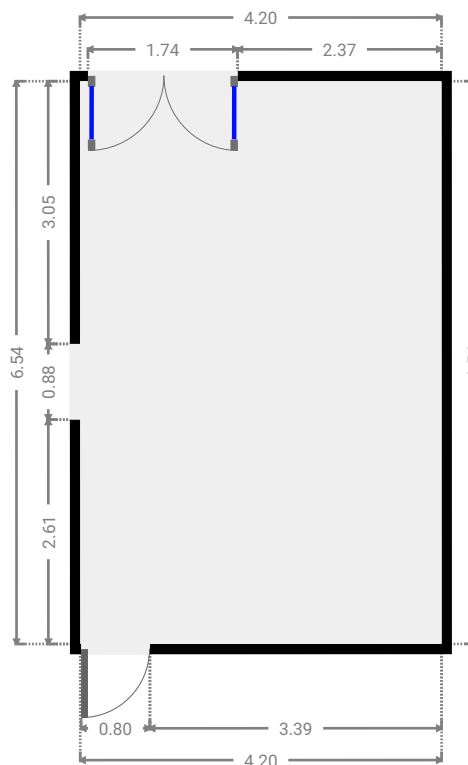
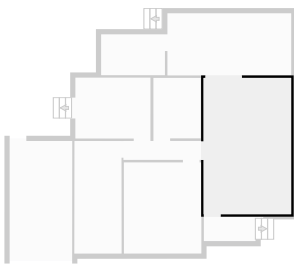
▼ **Laundry Room**
Ground Floor

WIDTH: 3.06 m • LENGTH: 1.96 m
AREA: 6.00 m² • PERIMETER: 10.04 m



▼ **Living Room**
Ground Floor

WIDTH: 4.20 m • LENGTH: 6.54 m
AREA: 27.47 m² • PERIMETER: 21.48 m



▼ Other
Ground Floor

WIDTH: 5.94 m • LENGTH: 2.98 m
AREA: 17.70 m² • PERIMETER: 17.84 m

