

# 261 Hutton Street

**SUBMITTED BY**

Ray White Rockhampton Casey  
stockers@cqoz.com

---

**CREATED ON**

2022-09-07

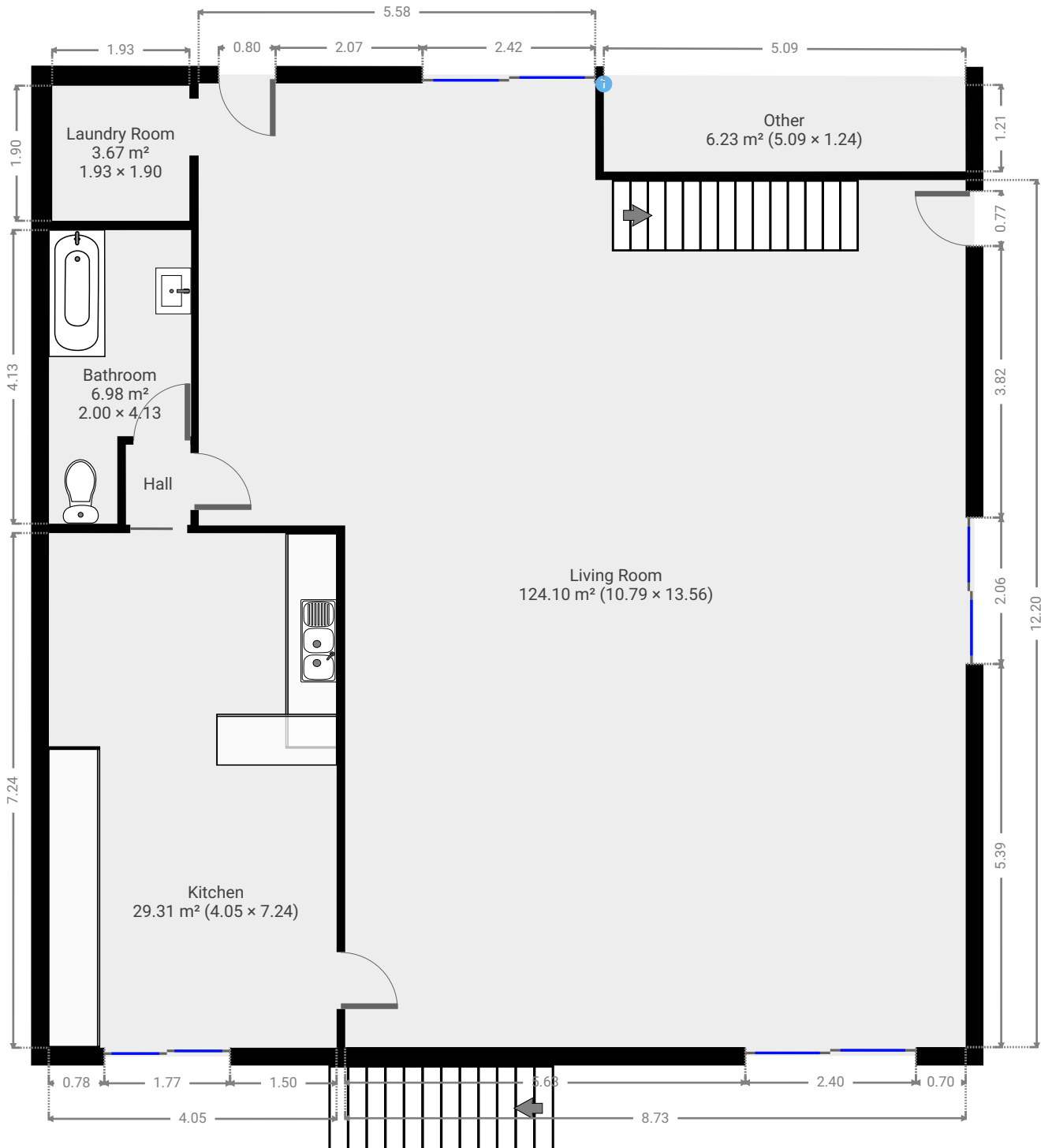
---

**Floors**

2

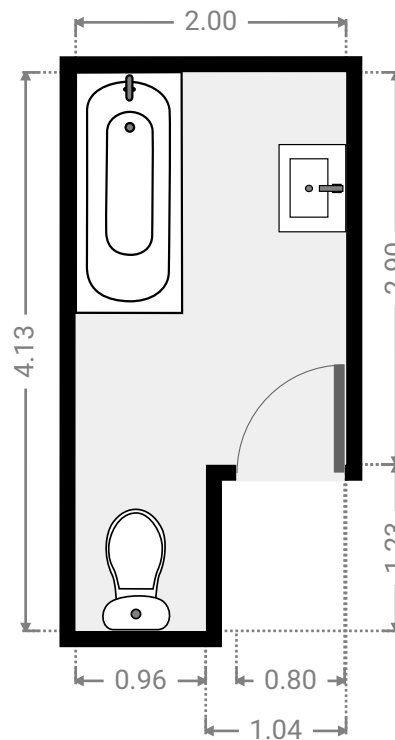
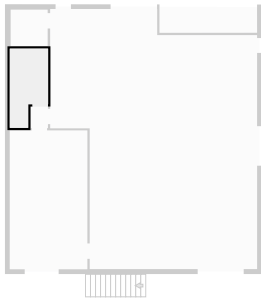
---

▼ Ground Floor



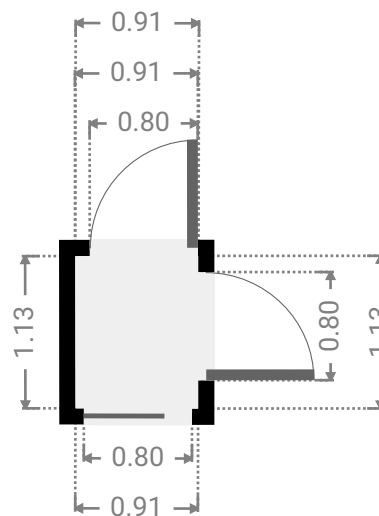
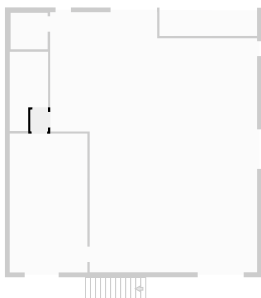
▼ **Bathroom**  
Ground Floor

WIDTH: 2.00 m • LENGTH: 4.13 m  
AREA: 6.98 m<sup>2</sup> • PERIMETER: 12.26 m



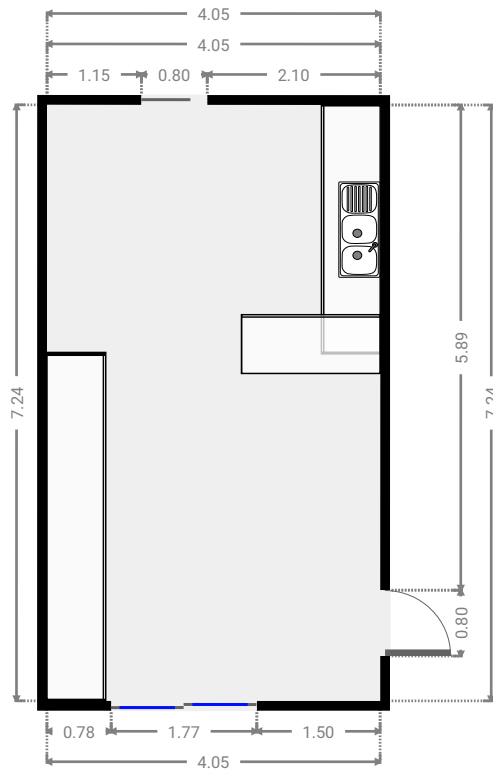
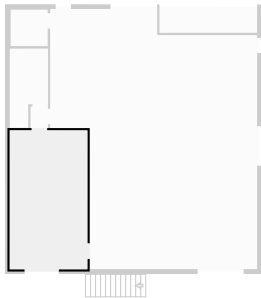
▼ **Hall**  
Ground Floor

WIDTH: 0.91 m • LENGTH: 1.13 m  
AREA: 1.02 m<sup>2</sup> • PERIMETER: 4.07 m



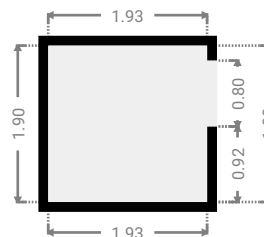
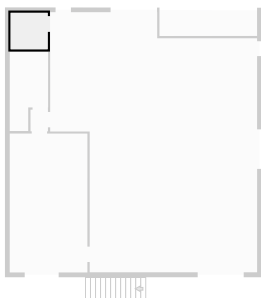
▼ **Kitchen**  
Ground Floor

WIDTH: 4.05 m • LENGTH: 7.24 m  
AREA: 29.31 m<sup>2</sup> • PERIMETER: 22.58 m



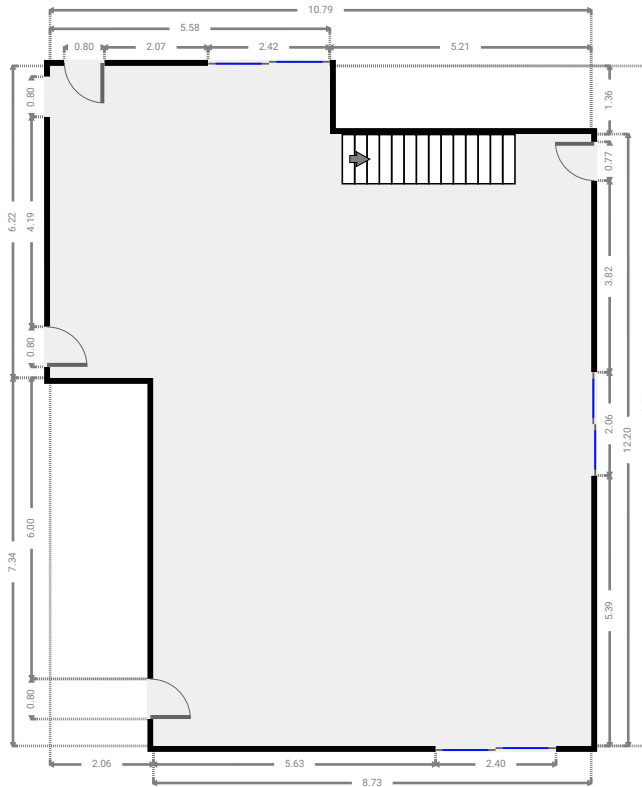
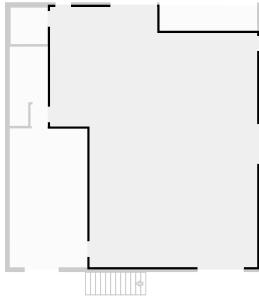
▼ **Laundry Room**  
Ground Floor

WIDTH: 1.93 m • LENGTH: 1.90 m  
AREA: 3.67 m<sup>2</sup> • PERIMETER: 7.66 m



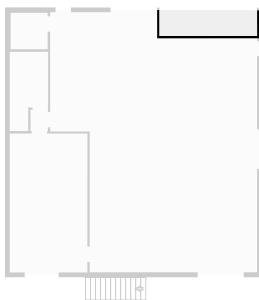
▼ Living Room  
Ground Floor

WIDTH: 10.79 m • LENGTH: 13.56 m  
AREA: 124.10 m<sup>2</sup> • PERIMETER: 48.70 m



▼ Other  
Ground Floor

WIDTH: 5.09 m • LENGTH: 1.24 m  
AREA: 6.23 m<sup>2</sup> • PERIMETER: 12.63 m



▼ Other/Ground Floor

1 OPENING

Height  
0.00 m

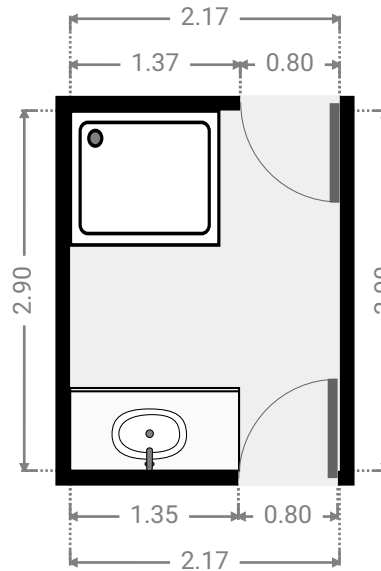
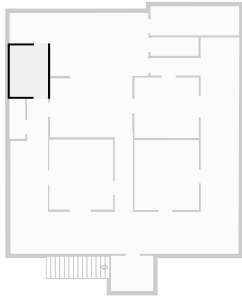


▼ 1st Floor



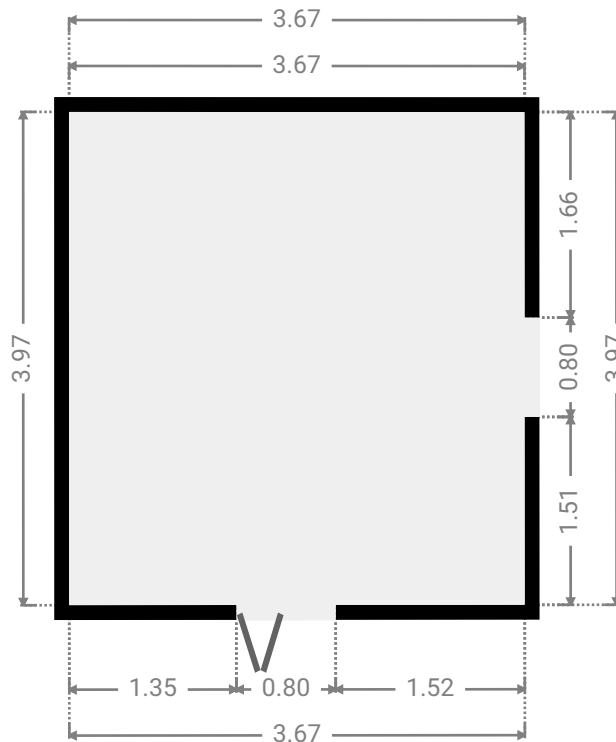
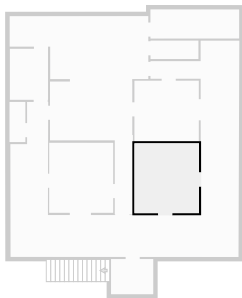
▼ **Bathroom**  
1st Floor

WIDTH: 2.17 m • LENGTH: 2.90 m  
AREA: 6.29 m<sup>2</sup> • PERIMETER: 10.14 m



▼ **Bedroom**  
1st Floor

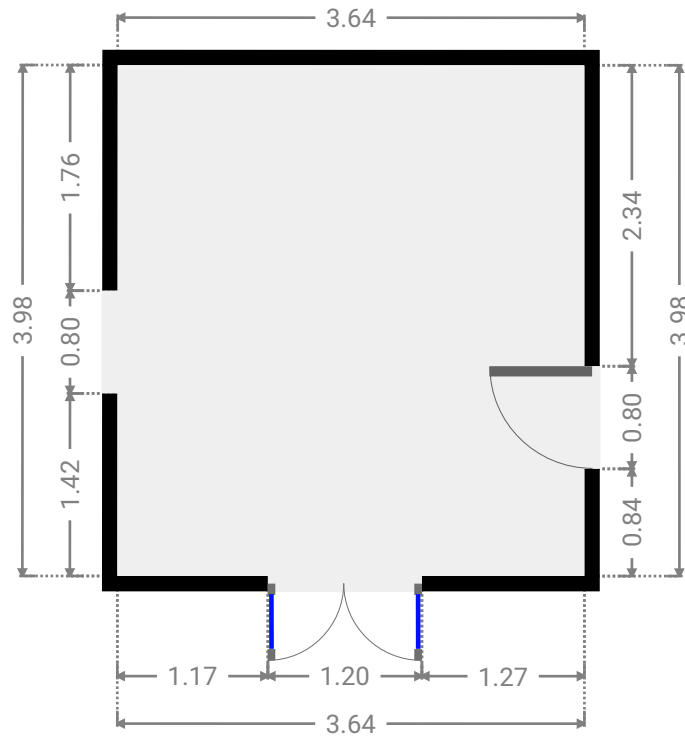
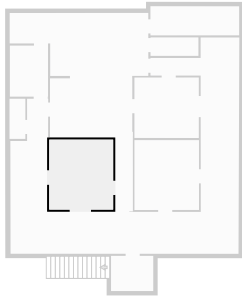
WIDTH: 3.67 m • LENGTH: 3.97 m  
AREA: 14.58 m<sup>2</sup> • PERIMETER: 15.28 m





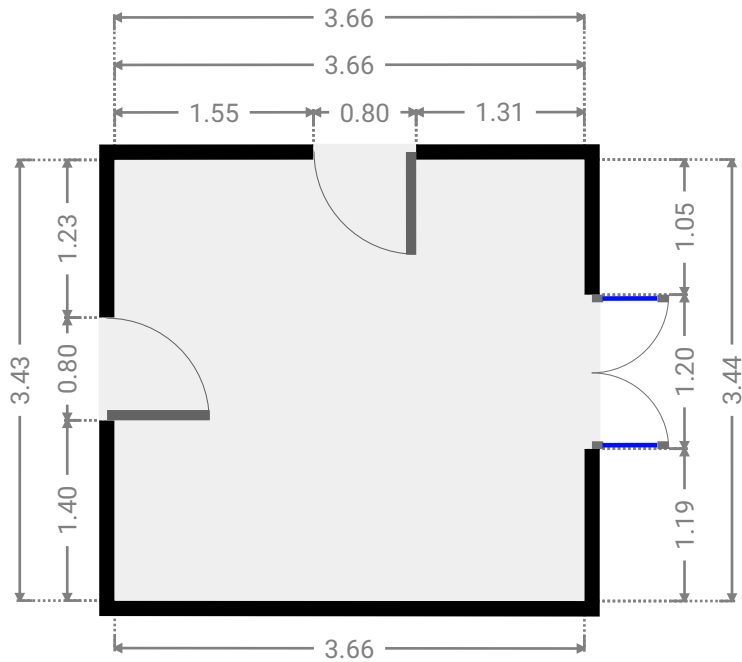
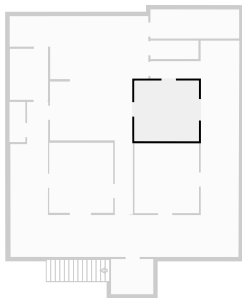
▼ Bedroom  
1st Floor

WIDTH: 3.64 m • LENGTH: 3.98 m  
AREA: 14.48 m<sup>2</sup> • PERIMETER: 15.24 m



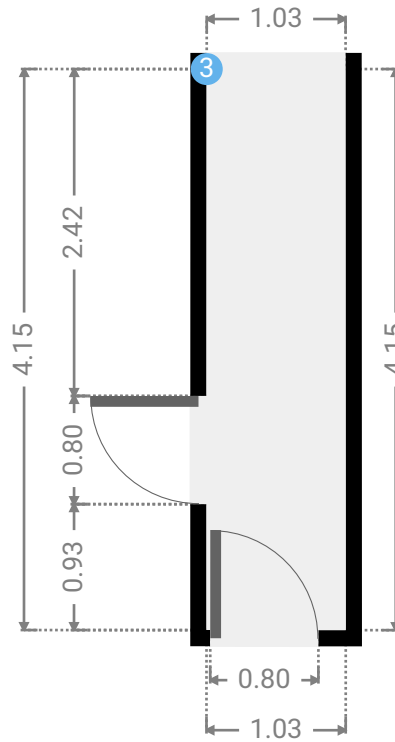
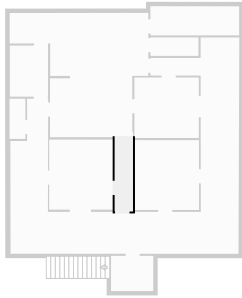
▼ Bedroom  
1st Floor

WIDTH: 3.66 m • LENGTH: 3.44 m  
AREA: 12.58 m<sup>2</sup> • PERIMETER: 14.19 m



▼ **Hall**  
1st Floor

WIDTH: 1.03 m • LENGTH: 4.15 m  
AREA: 4.27 m<sup>2</sup> • PERIMETER: 10.36 m



▼ **Hall/1st Floor**

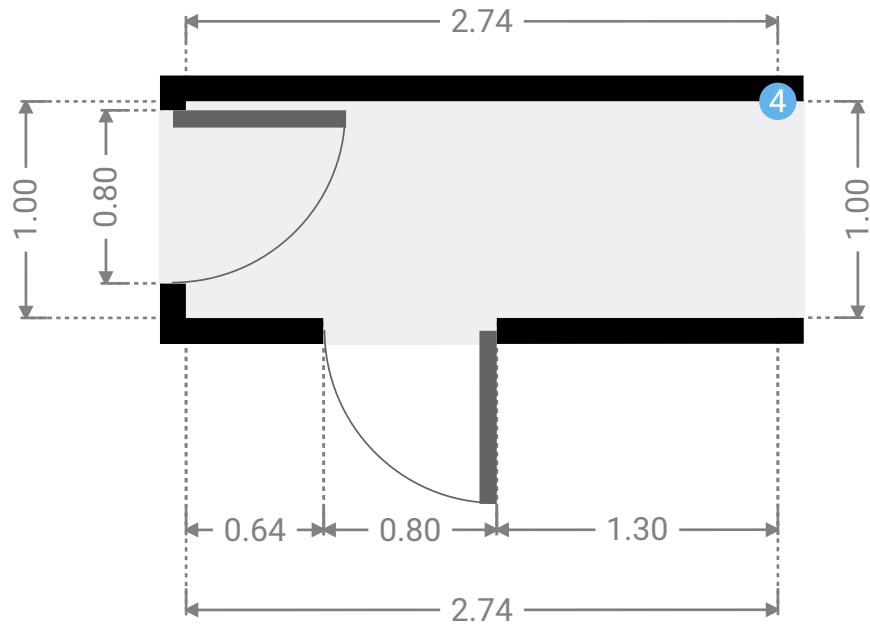
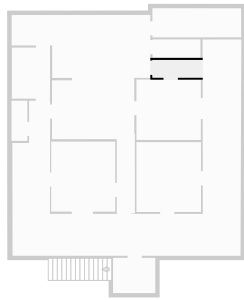
**3 OPENING**

Height  
0.00 m



▼ **Hall**  
1st Floor

WIDTH: 2.74 m • LENGTH: 1.00 m  
AREA: 2.74 m<sup>2</sup> • PERIMETER: 7.47 m



▼ **Hall/1st Floor**

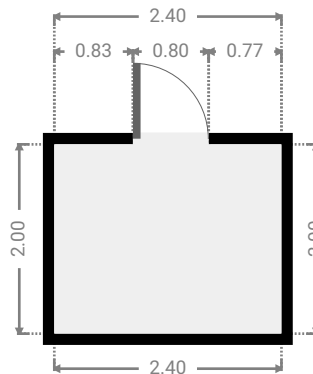
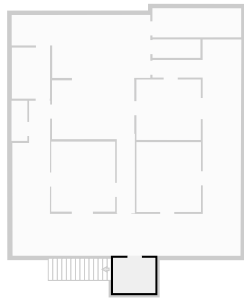
**4 OPENING**

Height  
0.00 m



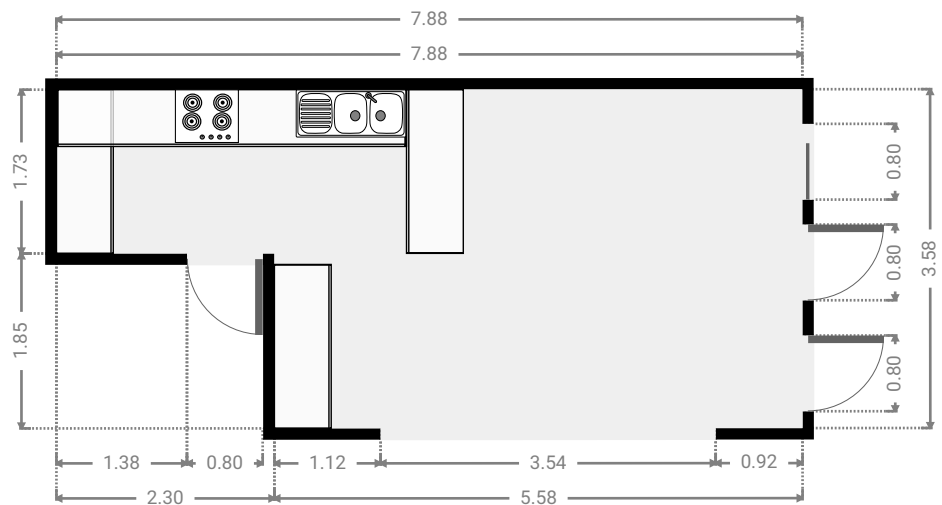
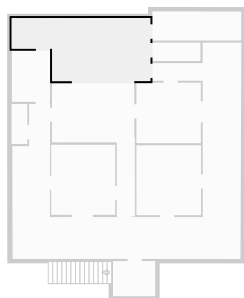
▼ **Hall**  
1st Floor

WIDTH: 2.40 m • LENGTH: 2.00 m  
AREA: 4.80 m<sup>2</sup> • PERIMETER: 8.80 m



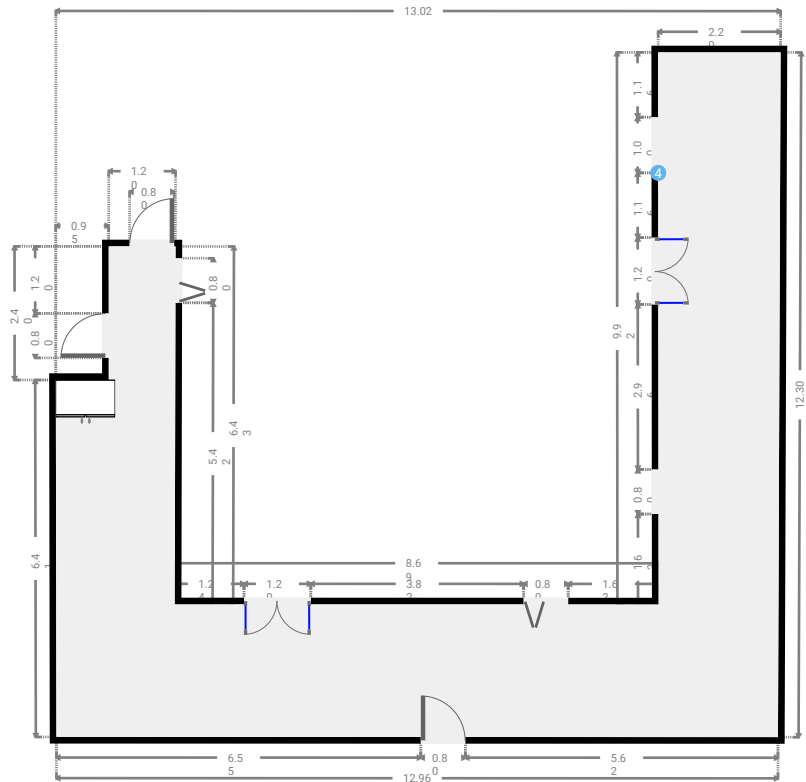
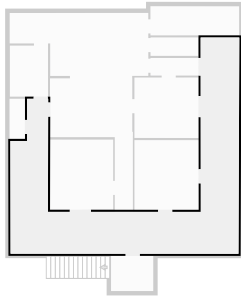
▼ **Kitchen**  
1st Floor

WIDTH: 7.88 m • LENGTH: 3.58 m  
AREA: 23.96 m<sup>2</sup> • PERIMETER: 22.92 m



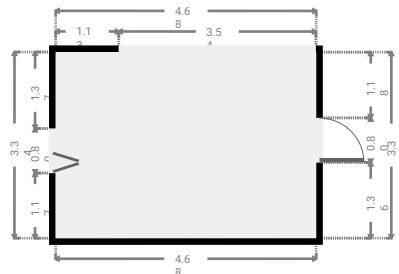
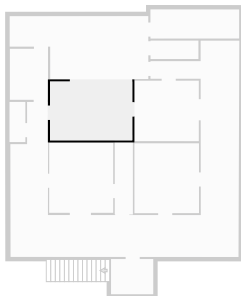
▼ Living Room  
1st Floor

WIDTH: 13.02 m • LENGTH: 12.30 m  
AREA: 63.95 m<sup>2</sup> • PERIMETER: 63.46 m



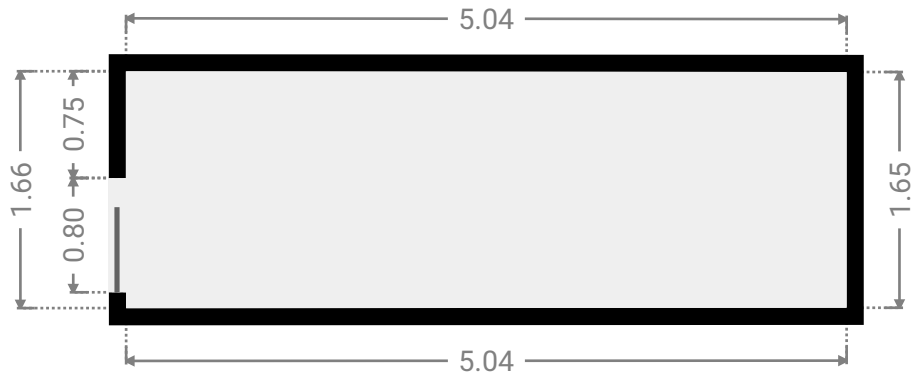
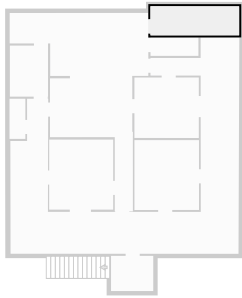
▼ Living Room  
1st Floor

WIDTH: 4.68 m • LENGTH: 3.34 m  
AREA: 15.64 m<sup>2</sup> • PERIMETER: 16.04 m



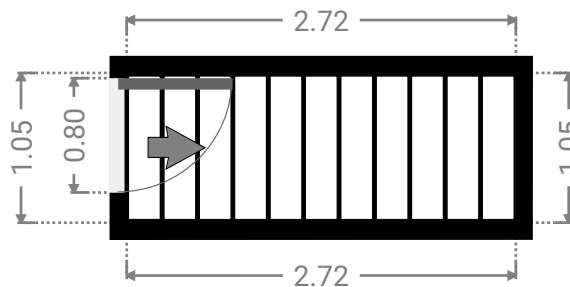
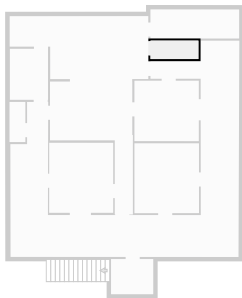
▼ **Other**  
1st Floor

WIDTH: 5.04 m • LENGTH: 1.66 m  
AREA: 8.34 m<sup>2</sup> • PERIMETER: 13.40 m



▼ **Stairway**  
1st Floor

WIDTH: 2.72 m • LENGTH: 1.05 m  
AREA: 2.85 m<sup>2</sup> • PERIMETER: 7.54 m



▼ Toilet  
1st Floor

WIDTH: 0.90 m • LENGTH: 2.28 m  
AREA: 2.05 m<sup>2</sup> • PERIMETER: 6.36 m

