

# 260 Fourteen Mile Road

**SUBMITTED BY**

Ray White Rockhampton Casey  
stockers@cqoz.com

---

**CREATED ON**

2022-08-08

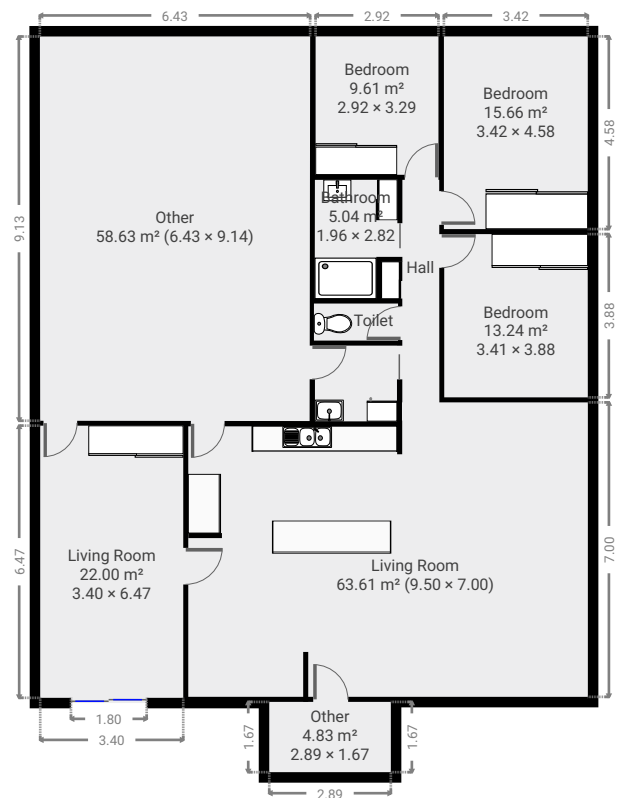
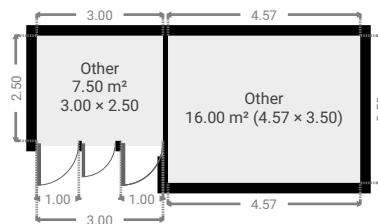
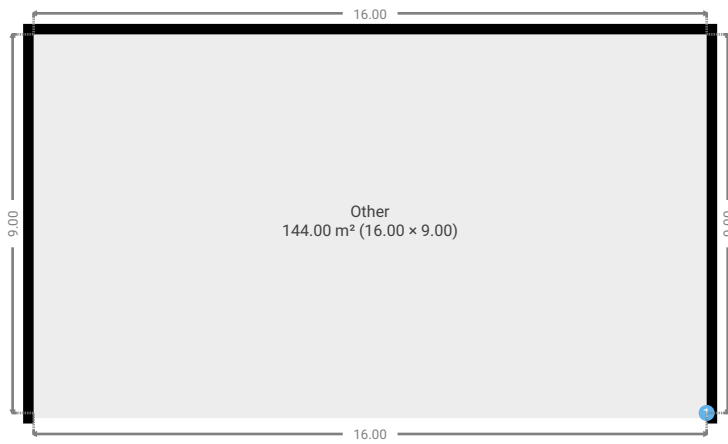
---

**Floors**

1

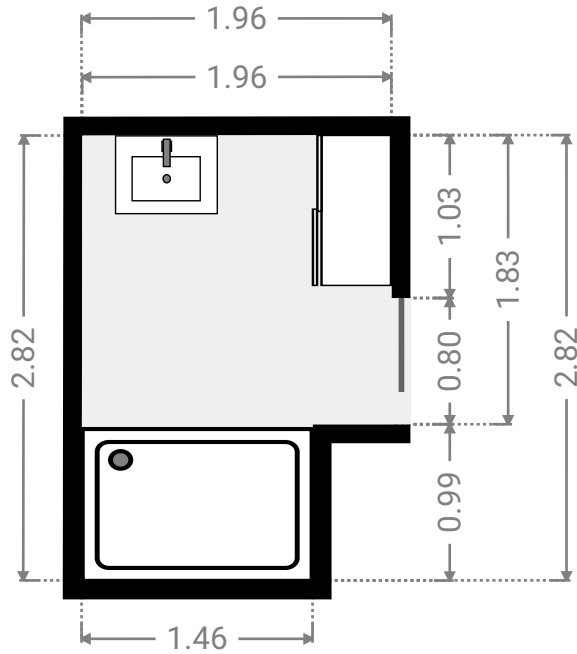
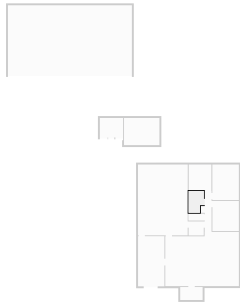
---

## ▼ Ground Floor



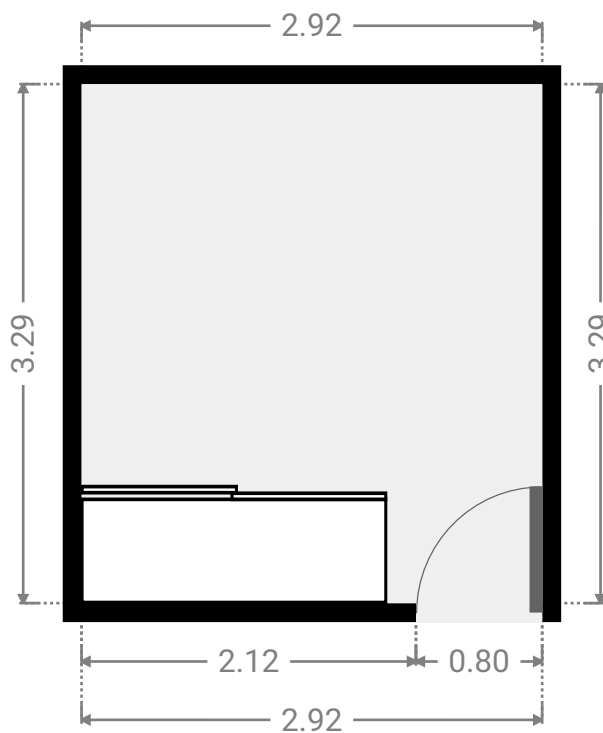
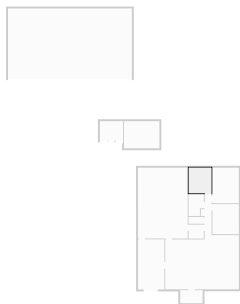
▼ **Bathroom**  
Ground Floor

WIDTH: 1.96 m • LENGTH: 2.82 m  
AREA: 5.04 m<sup>2</sup> • PERIMETER: 9.57 m



▼ **Bedroom**  
Ground Floor

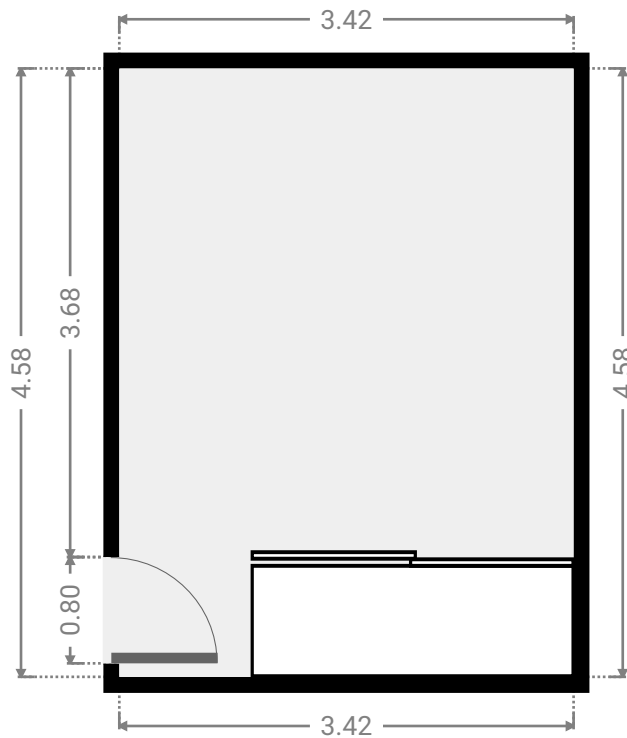
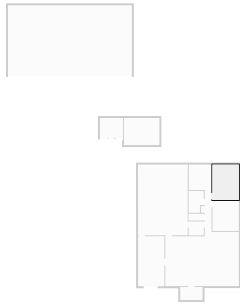
WIDTH: 2.92 m • LENGTH: 3.29 m  
AREA: 9.61 m<sup>2</sup> • PERIMETER: 12.42 m



FLOORS: 1

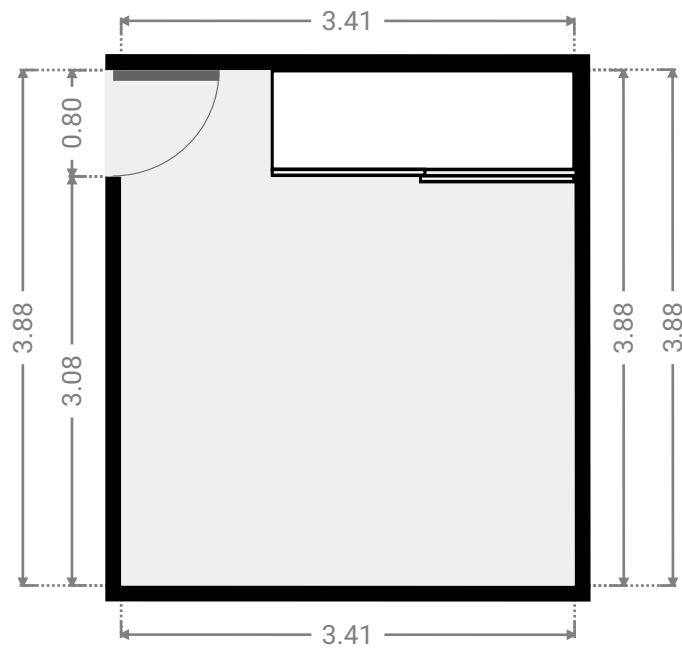
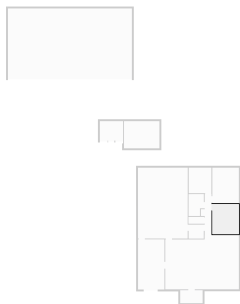
▼ **Bedroom**  
Ground Floor

WIDTH: 3.42 m • LENGTH: 4.58 m  
AREA: 15.66 m<sup>2</sup> • PERIMETER: 16.00 m



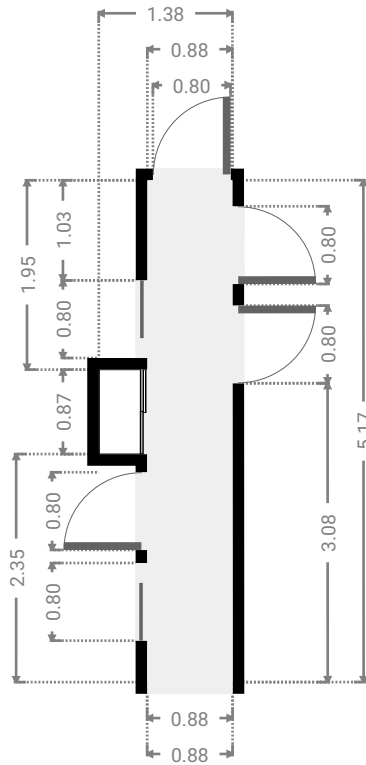
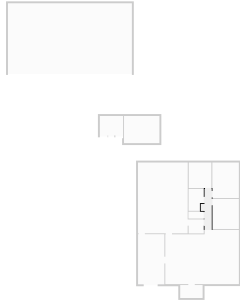
▼ **Bedroom**  
Ground Floor

WIDTH: 3.41 m • LENGTH: 3.88 m  
AREA: 13.24 m<sup>2</sup> • PERIMETER: 14.59 m



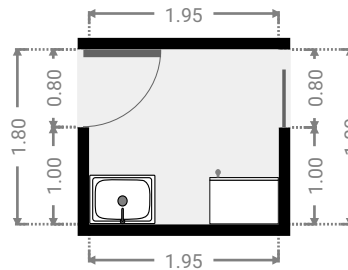
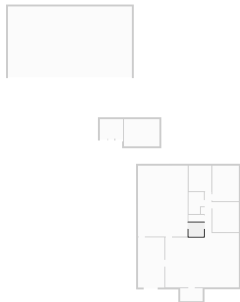
## ▼ Hall Ground Floor

WIDTH: 1.38 m • LENGTH: 5.17 m  
AREA: 4.97 m<sup>2</sup> • PERIMETER: 13.09 m



## ▼ Laundry Room Ground Floor

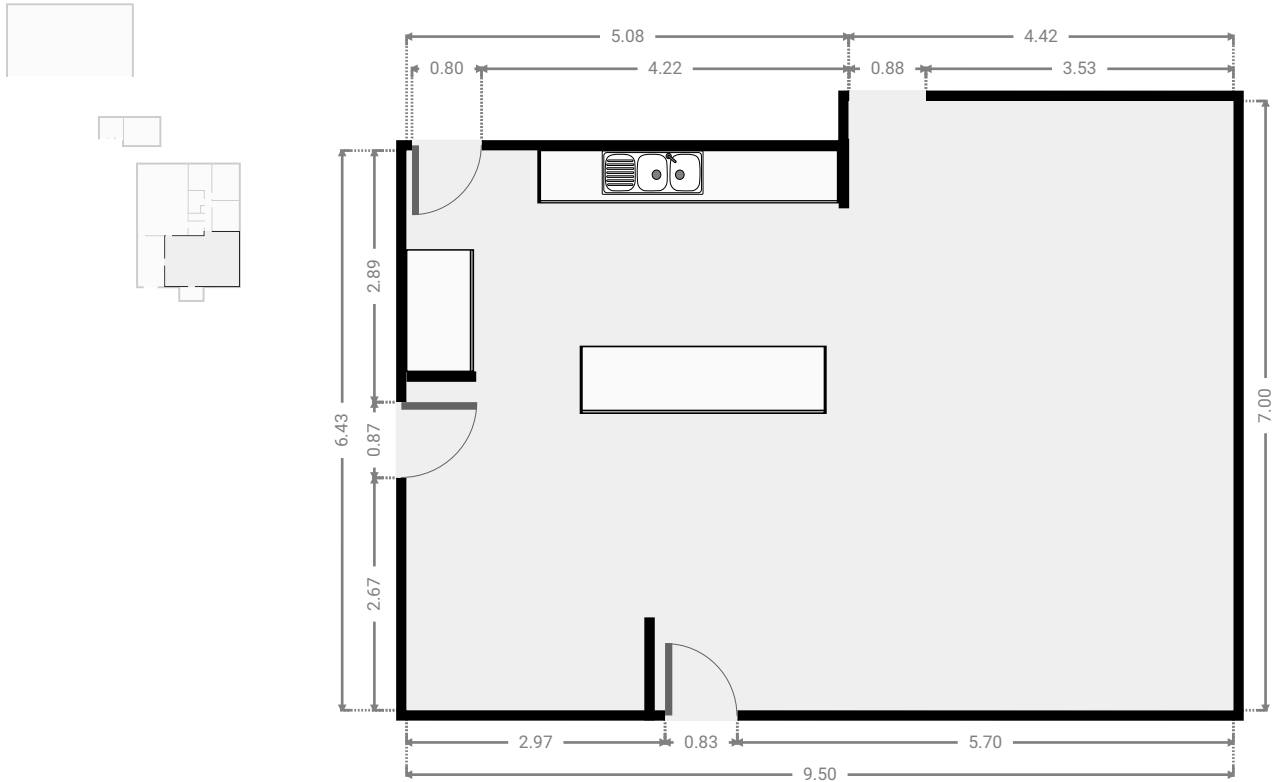
WIDTH: 1.95 m • LENGTH: 1.80 m  
AREA: 3.51 m<sup>2</sup> • PERIMETER: 7.50 m



FLOORS: 1

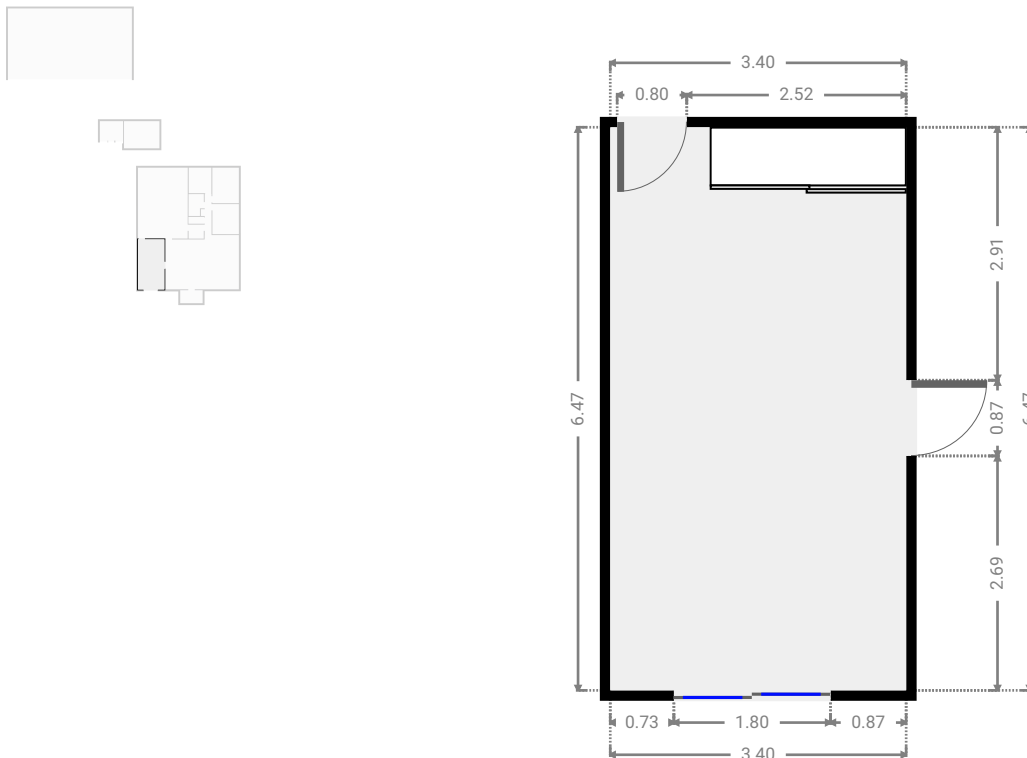
▼ **Living Room**  
Ground Floor

WIDTH: 9.50 m • LENGTH: 7.00 m  
AREA: 63.61 m<sup>2</sup> • PERIMETER: 33.00 m



▼ **Living Room**  
Ground Floor

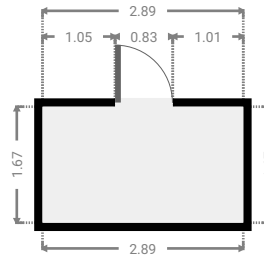
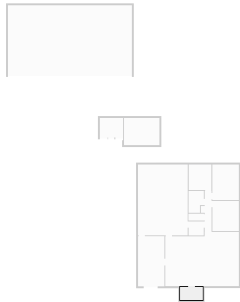
WIDTH: 3.40 m • LENGTH: 6.47 m  
AREA: 22.00 m<sup>2</sup> • PERIMETER: 19.74 m



FLOORS: 1

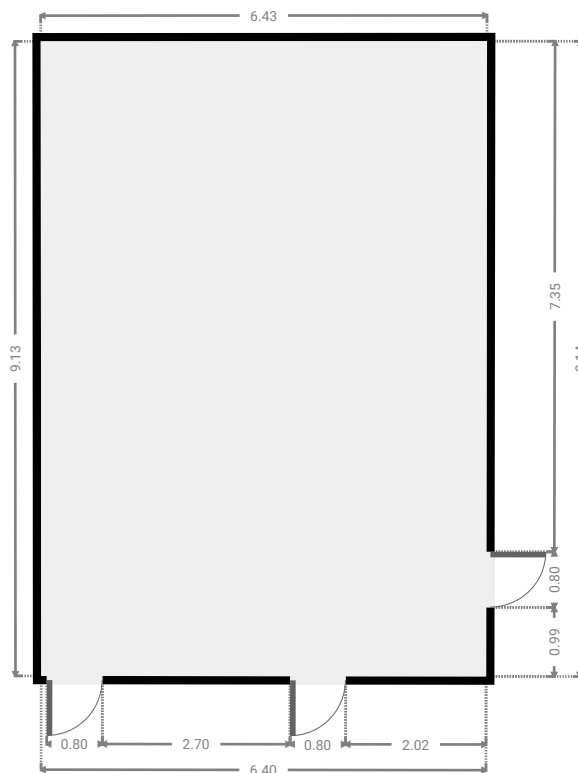
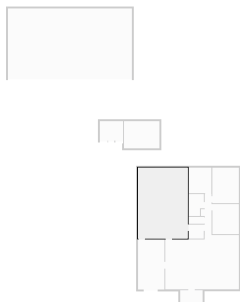
▼ **Other**  
Ground Floor

WIDTH: 2.89 m • LENGTH: 1.67 m  
AREA: 4.83 m<sup>2</sup> • PERIMETER: 9.12 m



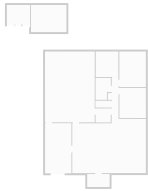
▼ **Other**  
Ground Floor

WIDTH: 6.43 m • LENGTH: 9.14 m  
AREA: 58.63 m<sup>2</sup> • PERIMETER: 31.11 m



▼ **Other**  
Ground Floor

WIDTH: 16.00 m • LENGTH: 9.00 m  
AREA: 144.00 m<sup>2</sup> • PERIMETER: 50.00 m



▼ **Other/**Ground Floor

① **OPENING**

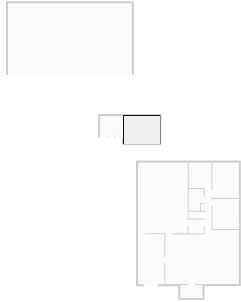
Height  
0.00 m





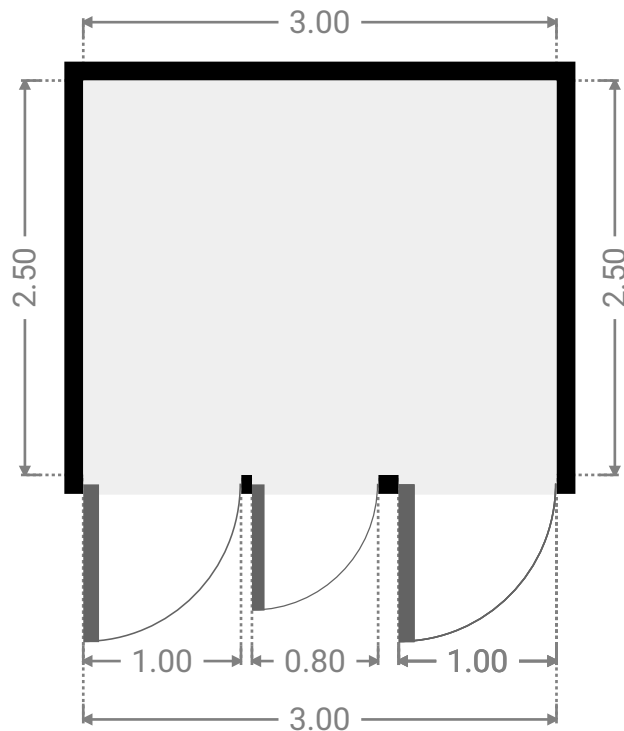
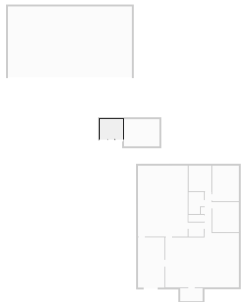
▼ Other  
Ground Floor

WIDTH: 4.57 m • LENGTH: 3.50 m  
AREA: 16.00 m<sup>2</sup> • PERIMETER: 16.14 m



▼ Other  
Ground Floor

WIDTH: 3.00 m • LENGTH: 2.50 m  
AREA: 7.50 m<sup>2</sup> • PERIMETER: 11.00 m



▼ Toilet  
Ground Floor

WIDTH: 2.00 m • LENGTH: 0.88 m  
AREA: 1.76 m<sup>2</sup> • PERIMETER: 5.76 m

