

# 26 Angela Court

**SUBMITTED BY**

Ray White Rockhampton Casey  
stockers@cqoz.com

---

**CREATED ON**

2022-08-02

---

**Floors**

1

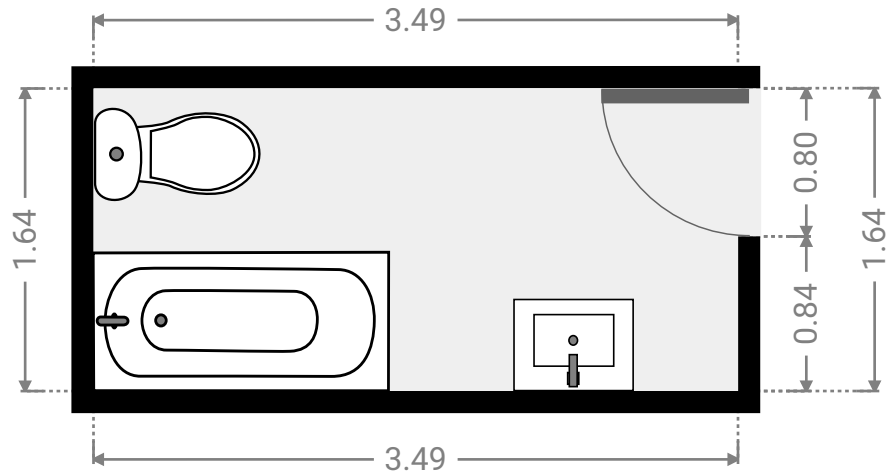
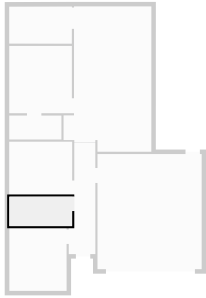
---

## ▼ Ground Floor



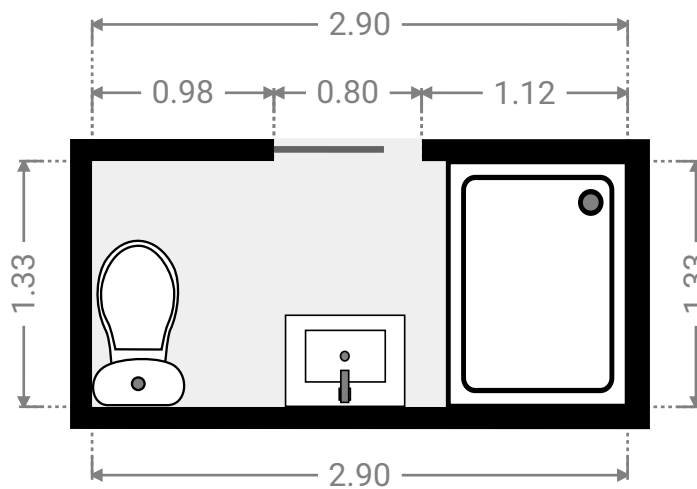
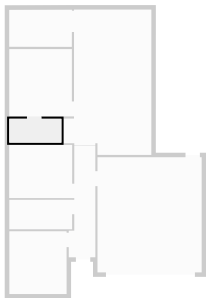
## ▼ Bathroom Ground Floor

WIDTH: 3.49 m • LENGTH: 1.64 m  
AREA: 5.72 m<sup>2</sup> • PERIMETER: 10.26 m



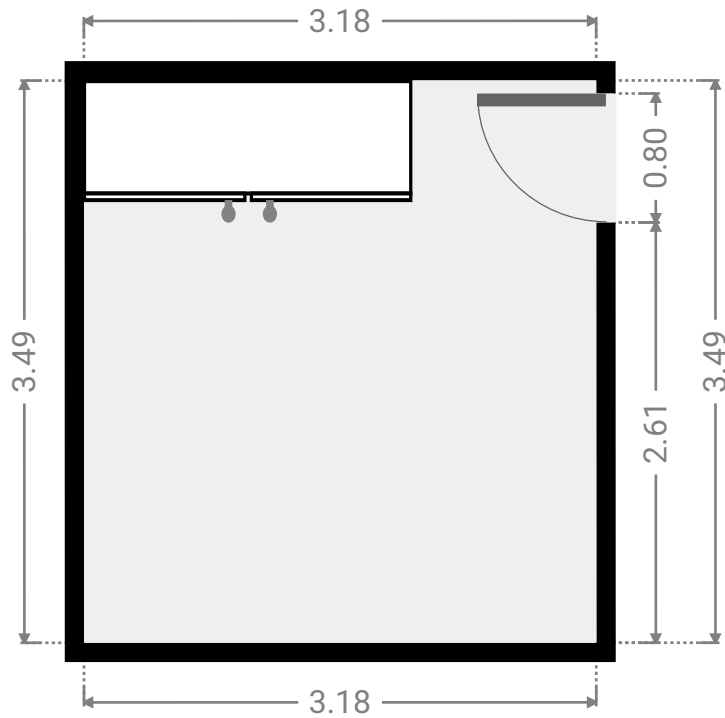
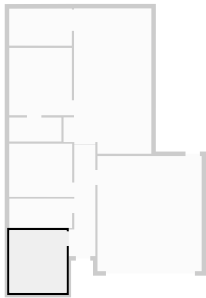
## ▼ Bathroom Ground Floor

WIDTH: 2.90 m • LENGTH: 1.33 m  
AREA: 3.86 m<sup>2</sup> • PERIMETER: 8.46 m



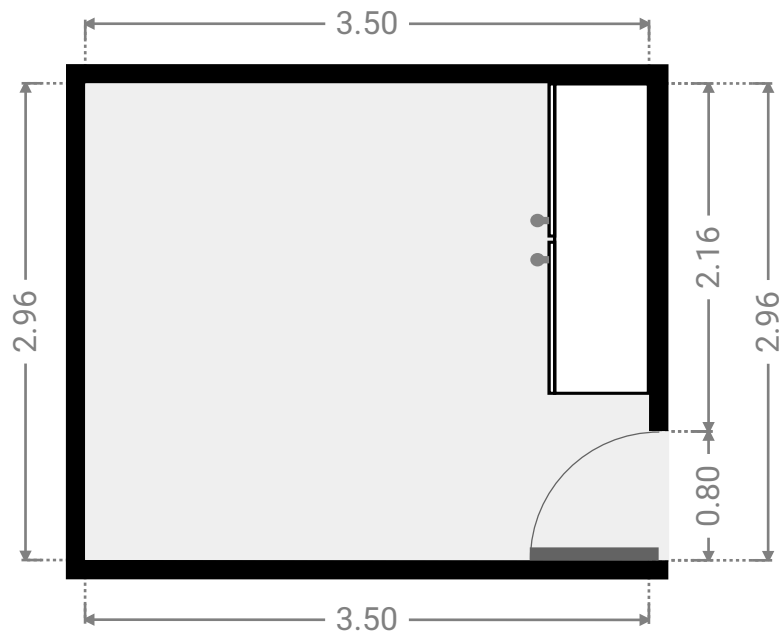
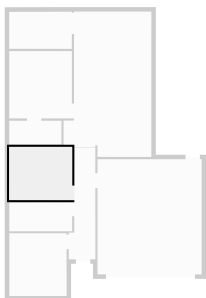
## ▼ Bedroom Ground Floor

WIDTH: 3.18 m • LENGTH: 3.49 m  
AREA: 11.10 m<sup>2</sup> • PERIMETER: 13.34 m



## ▼ Bedroom Ground Floor

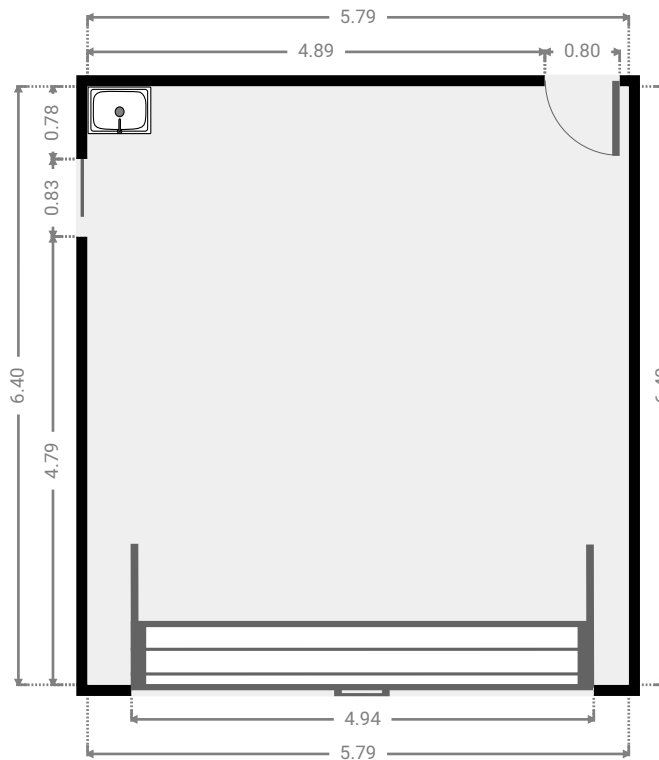
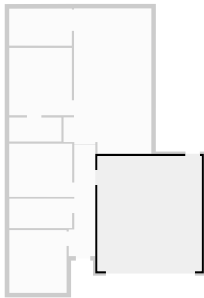
WIDTH: 3.50 m • LENGTH: 2.96 m  
AREA: 10.36 m<sup>2</sup> • PERIMETER: 12.92 m



FLOORS: 1

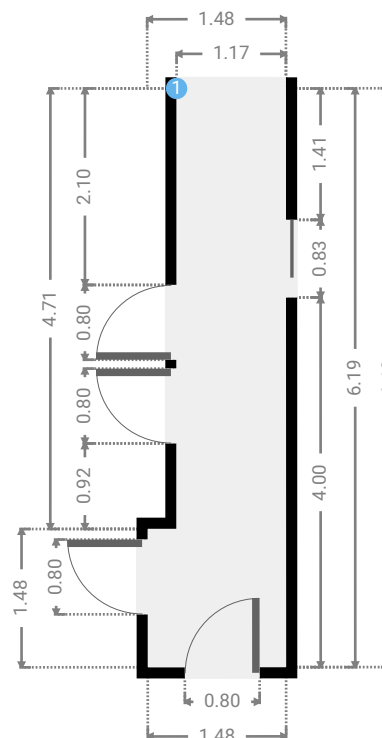
## ▼ Garage Ground Floor

WIDTH: 5.79 m • LENGTH: 6.40 m  
AREA: 37.06 m<sup>2</sup> • PERIMETER: 24.38 m



## ▼ Hall Ground Floor

WIDTH: 1.48 m • LENGTH: 6.19 m  
AREA: 7.71 m<sup>2</sup> • PERIMETER: 15.34 m



## ▼ Hall/Ground Floor

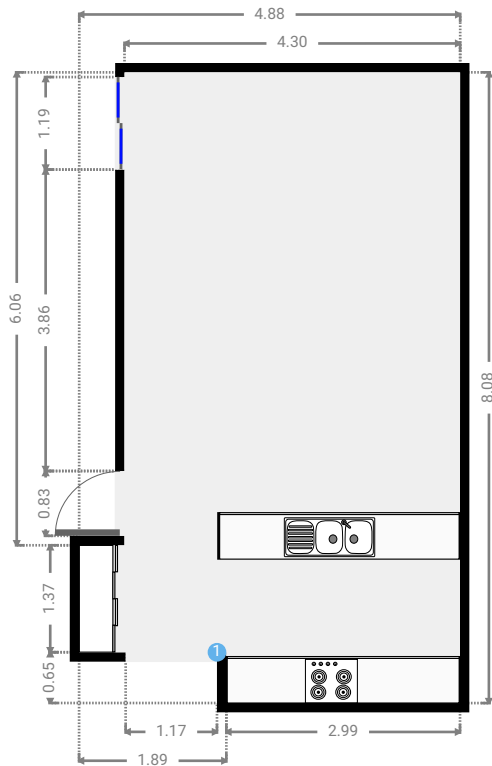
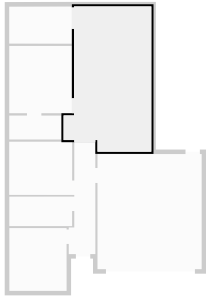
### 1 OPENING

Height  
0.00 m



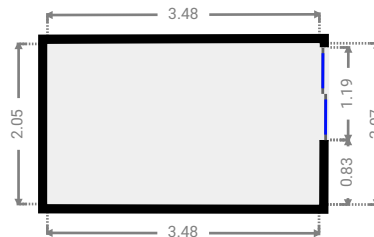
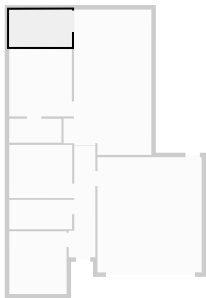
## ▼ Kitchen Ground Floor

WIDTH: 4.88 m • LENGTH: 8.08 m  
AREA: 34.68 m<sup>2</sup> • PERIMETER: 25.92 m



## ▼ Other Ground Floor

WIDTH: 3.48 m • LENGTH: 2.07 m  
AREA: 7.17 m<sup>2</sup> • PERIMETER: 11.08 m



## ▼ Primary Bedroom Ground Floor

WIDTH: 3.48 m • LENGTH: 3.74 m  
AREA: 13.02 m<sup>2</sup> • PERIMETER: 14.44 m

