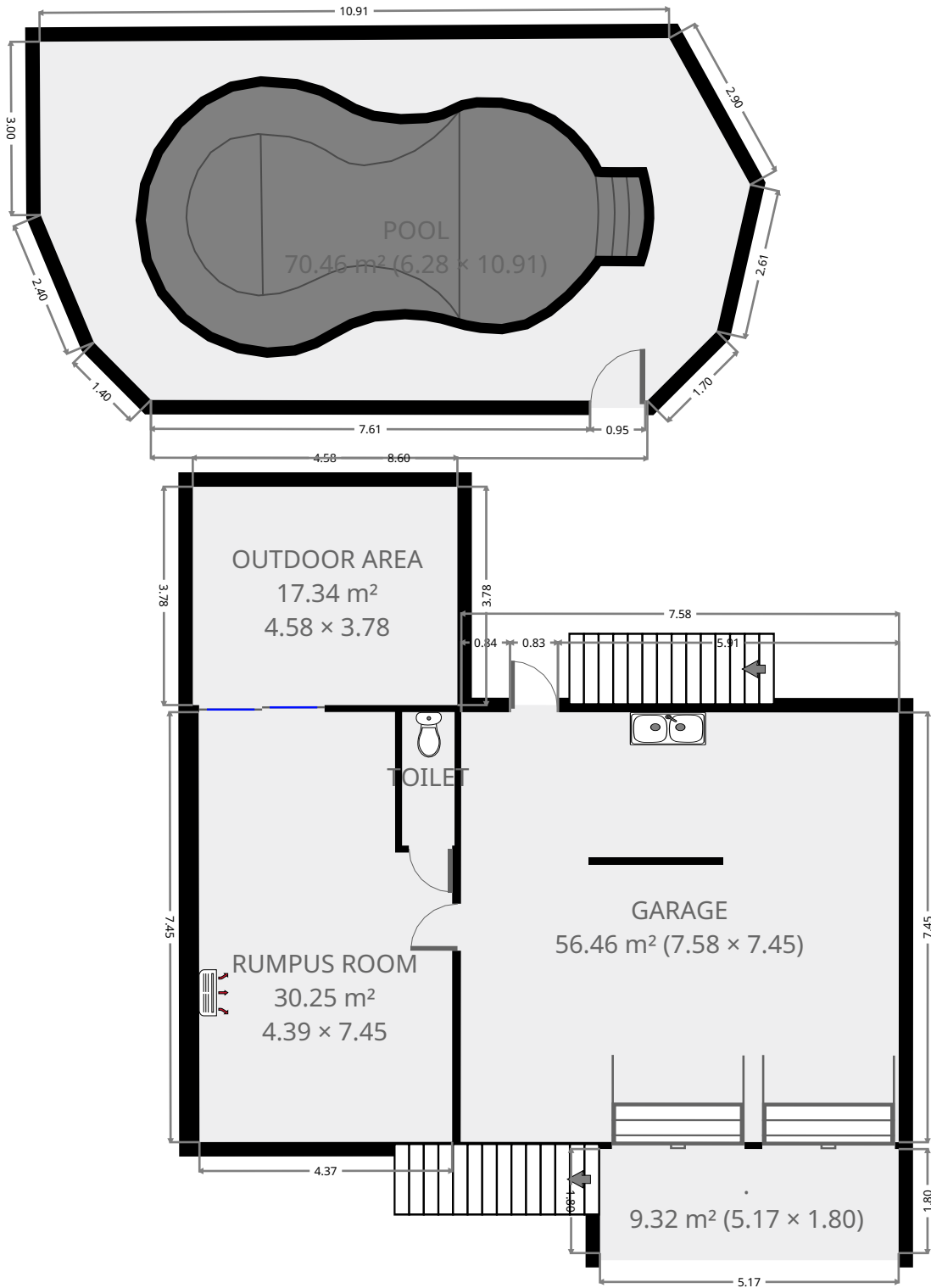


254 Merrill Avenue

Ground Floor



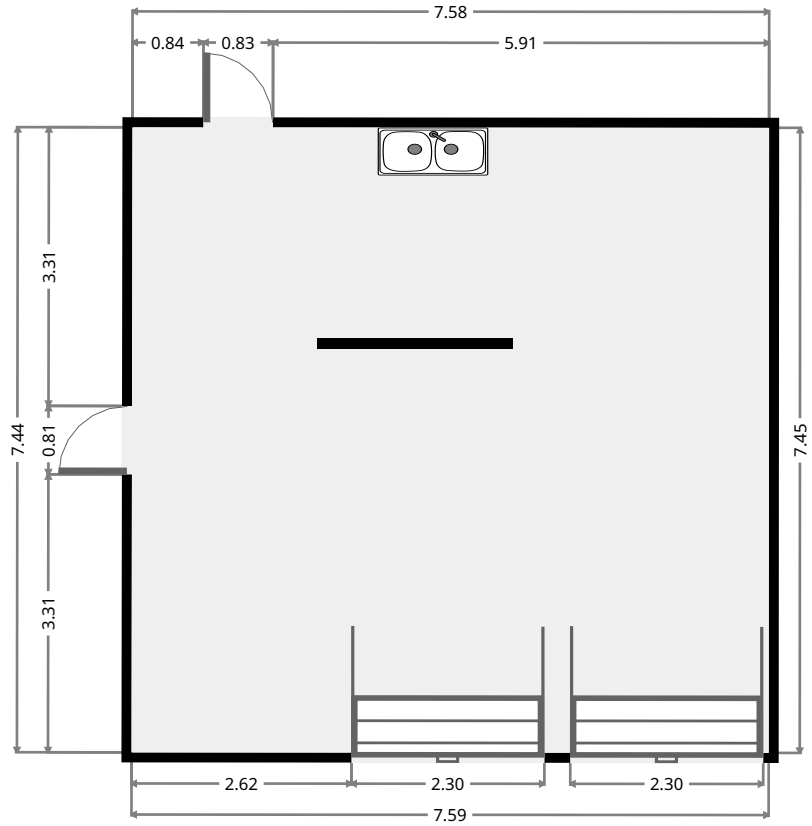
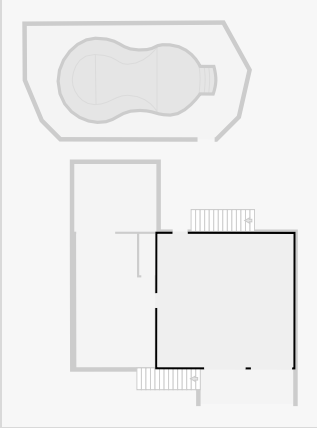
THIS FLOORPLAN IS PROVIDED WITHOUT WARRANTY OF ANY KIND. SENSOPIA DISCLAIMS ANY WARRANTY INCLUDING, WITHOUT LIMITATION, SATISFACTORY QUALITY OR ACCURACY OF DIMENSIONS.



254 Merrill Avenue

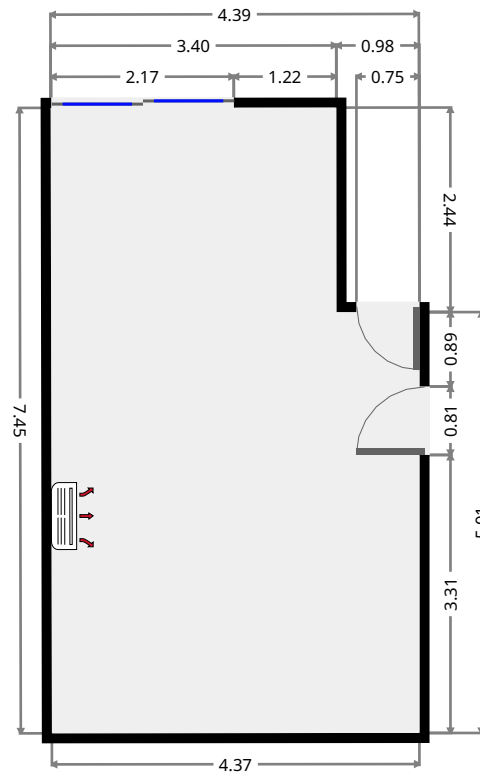
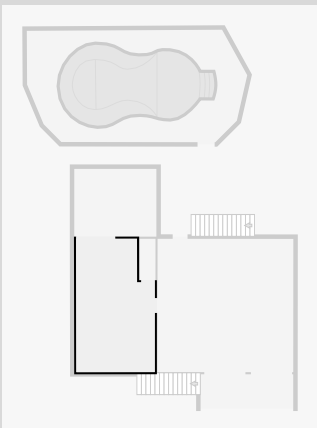
Garage

Width: 7.45 m
 Length: 7.58 m
 Area: 56.46 m²
 Perimeter: 30.06 m



Rumpus Room

Width: 4.39 m
 Length: 7.45 m
 Area: 30.25 m²
 Perimeter: 23.66 m

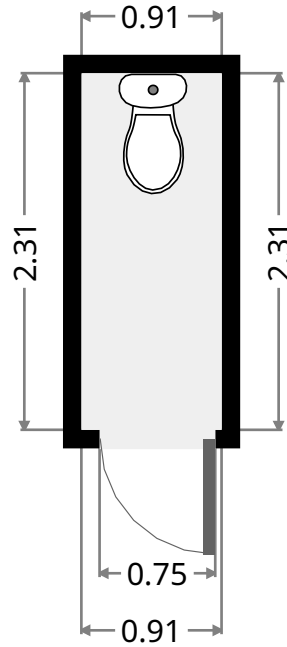
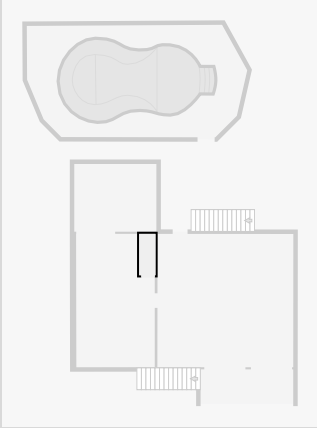


THIS FLOORPLAN IS PROVIDED WITHOUT WARRANTY OF ANY KIND. SENSOPIA DISCLAIMS ANY WARRANTY INCLUDING, WITHOUT LIMITATION, SATISFACTORY QUALITY OR ACCURACY OF DIMENSIONS.

254 Merrill Avenue

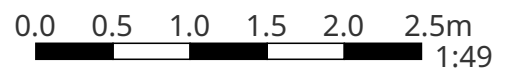
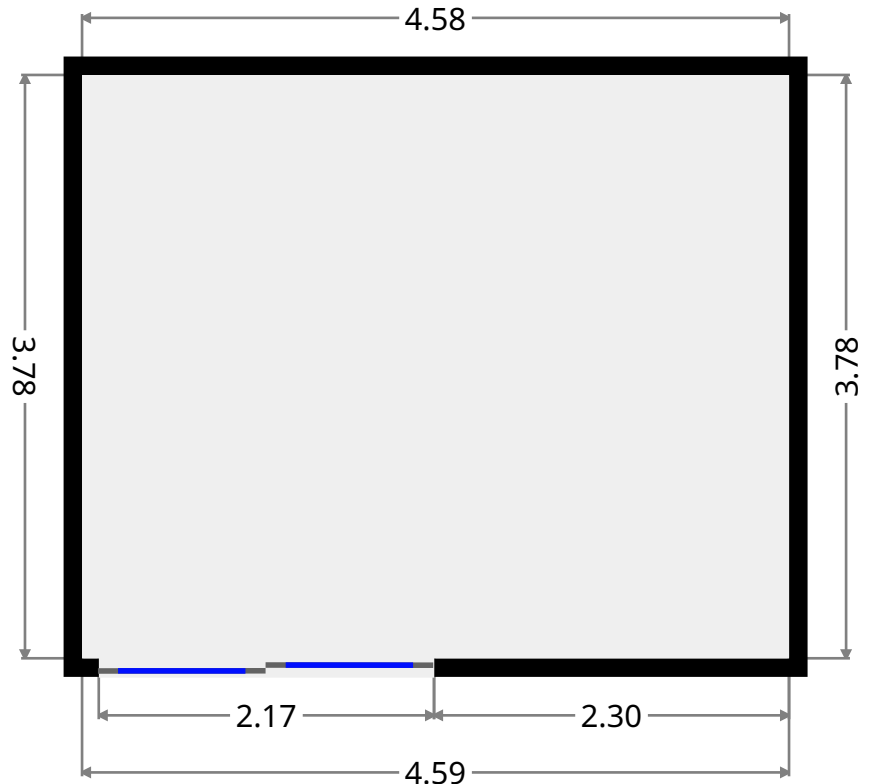
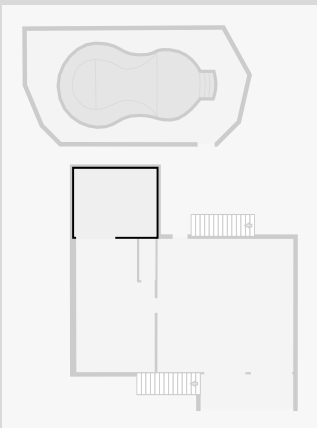
Toilet

Width: 0.91 m
Length: 2.31 m
Area: 2.10 m²
Perimeter: 6.44 m



Outdoor Area

Width: 3.78 m
Length: 4.58 m
Area: 17.34 m²
Perimeter: 16.73 m

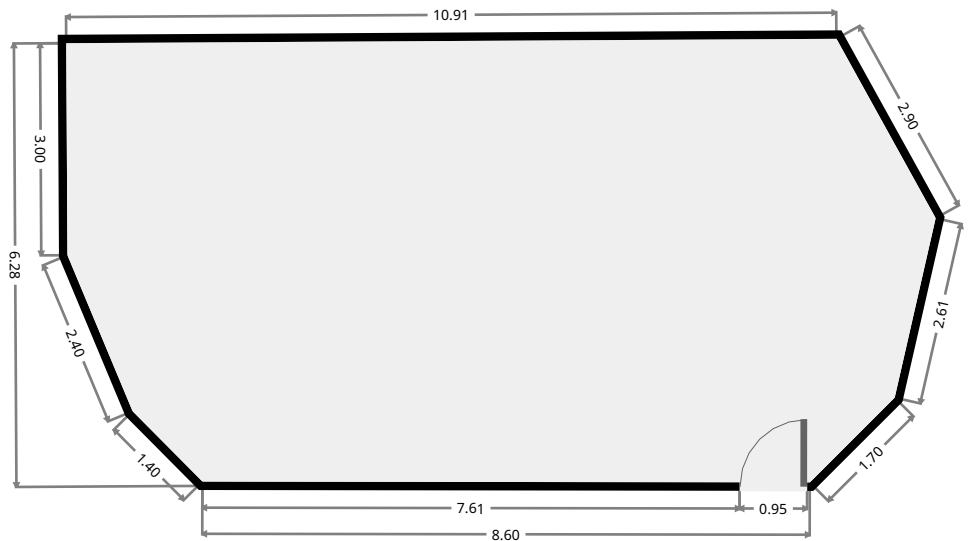
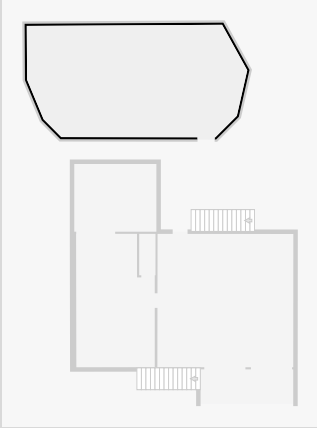


THIS FLOORPLAN IS PROVIDED WITHOUT WARRANTY OF ANY KIND. SENSOPIA DISCLAIMS ANY WARRANTY INCLUDING, WITHOUT LIMITATION, SATISFACTORY QUALITY OR ACCURACY OF DIMENSIONS.

254 Merrill Avenue

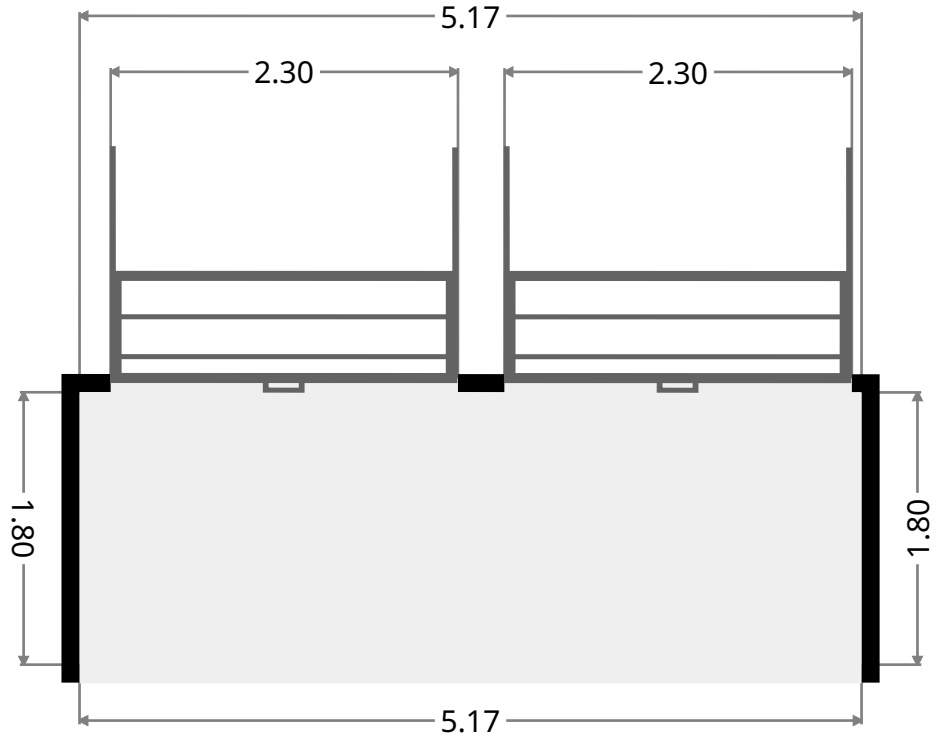
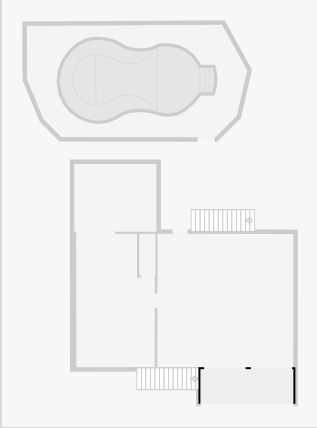
Pool

Width: 6.28 m
Length: 10.91 m
Area: 70.46 m²
Perimeter: 33.51 m



254 Merrill Avenue

•
Width: 1.80 m
Length: 5.17 m
Area: 9.32 m²
Perimeter: 13.95 m



254 Merrill Avenue

1st Floor



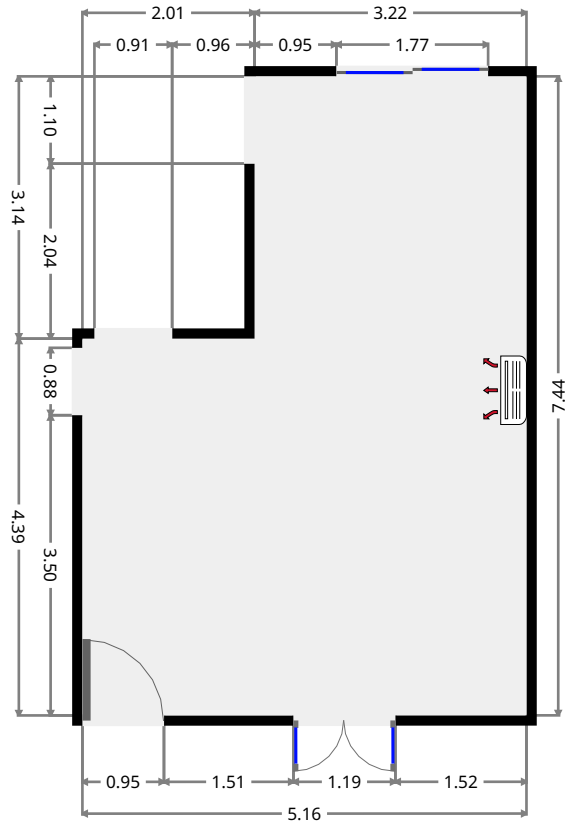
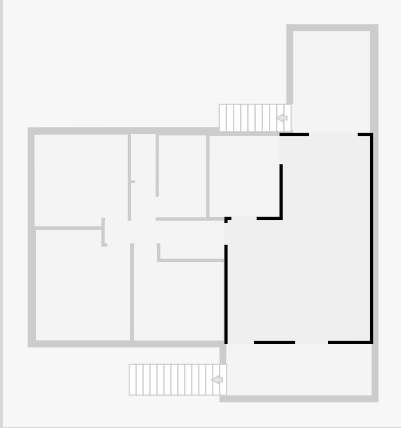
THIS FLOORPLAN IS PROVIDED WITHOUT WARRANTY OF ANY KIND. SENSOPIA DISCLAIMS ANY WARRANTY INCLUDING, WITHOUT LIMITATION, SATISFACTORY QUALITY OR ACCURACY OF DIMENSIONS.



254 Merrill Avenue

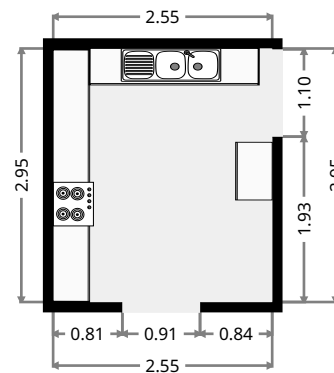
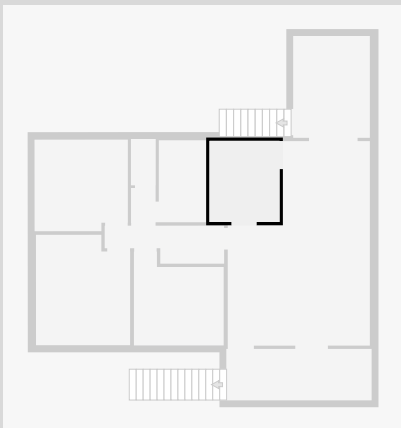
Living Room

Width: 5.16 m
 Length: 7.44 m
 Area: 32.35 m²
 Perimeter: 25.22 m



Kitchen

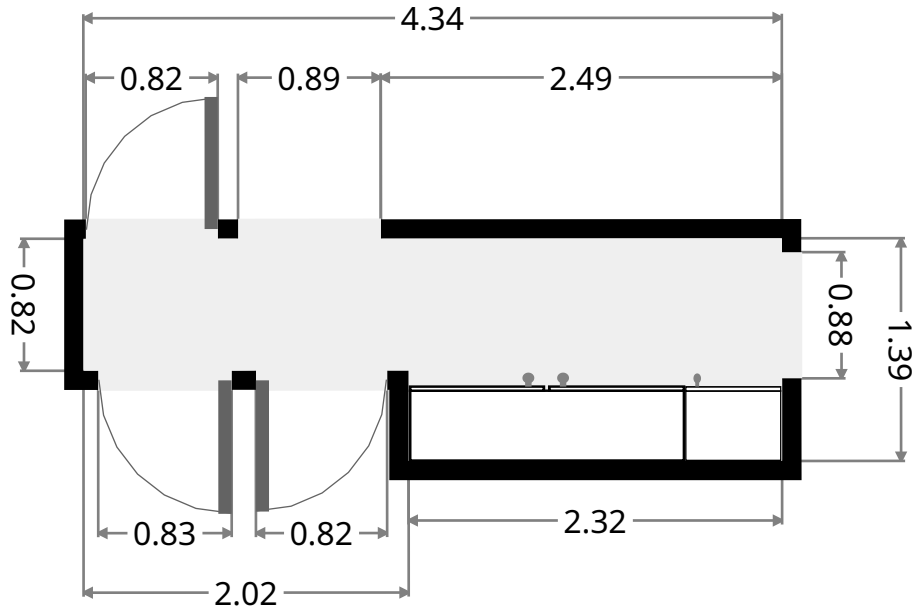
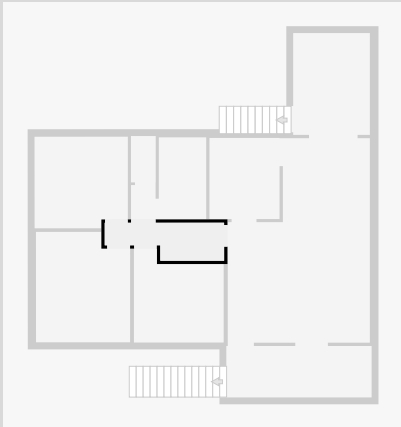
Width: 2.55 m
 Length: 2.95 m
 Area: 7.53 m²
 Perimeter: 11.01 m



254 Merrill Avenue

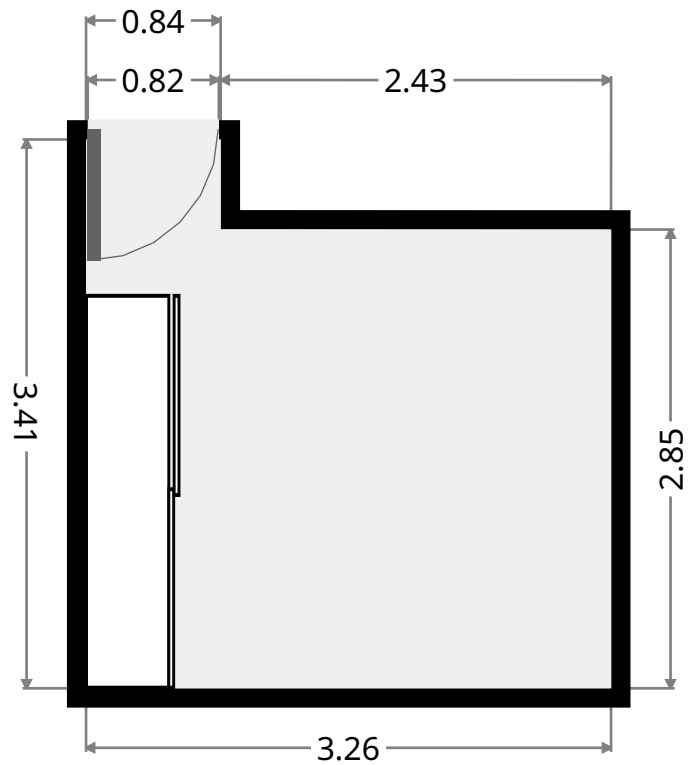
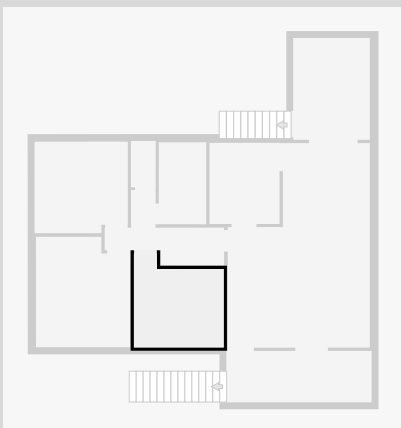
Hall

Width: 1.39 m
 Length: 4.34 m
 Area: 4.88 m²
 Perimeter: 11.46 m

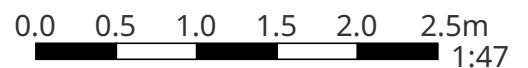


Bedroom

Width: 3.26 m
 Length: 3.41 m
 Area: 9.78 m²
 Perimeter: 13.36 m



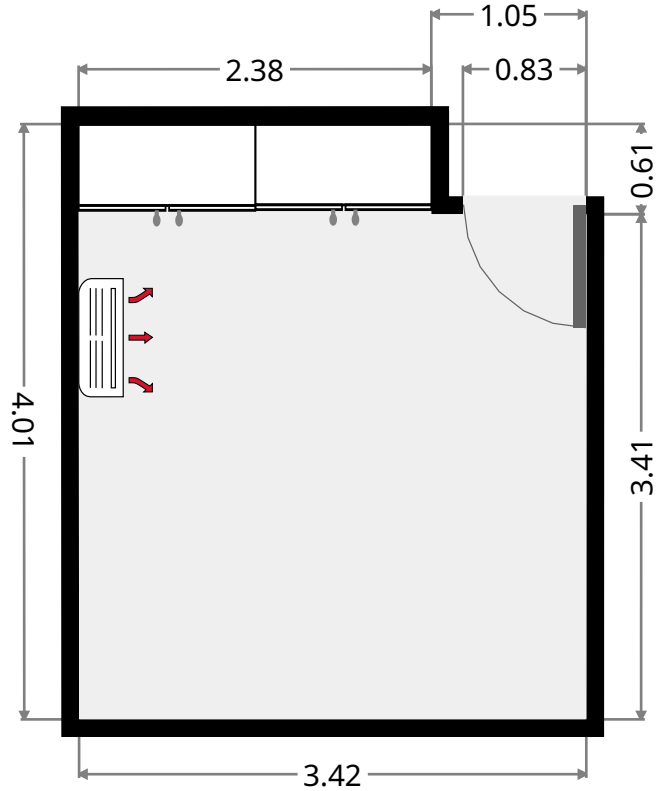
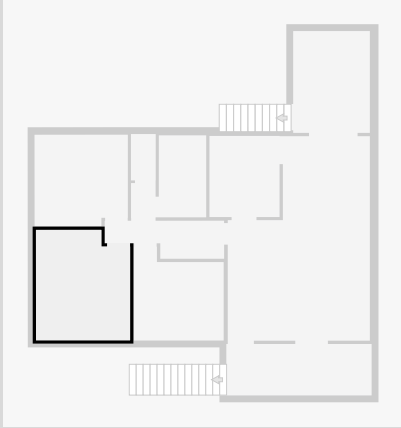
THIS FLOORPLAN IS PROVIDED WITHOUT WARRANTY OF ANY KIND. SENSOPIA DISCLAIMS ANY WARRANTY INCLUDING, WITHOUT LIMITATION, SATISFACTORY QUALITY OR ACCURACY OF DIMENSIONS.



254 Merrill Avenue

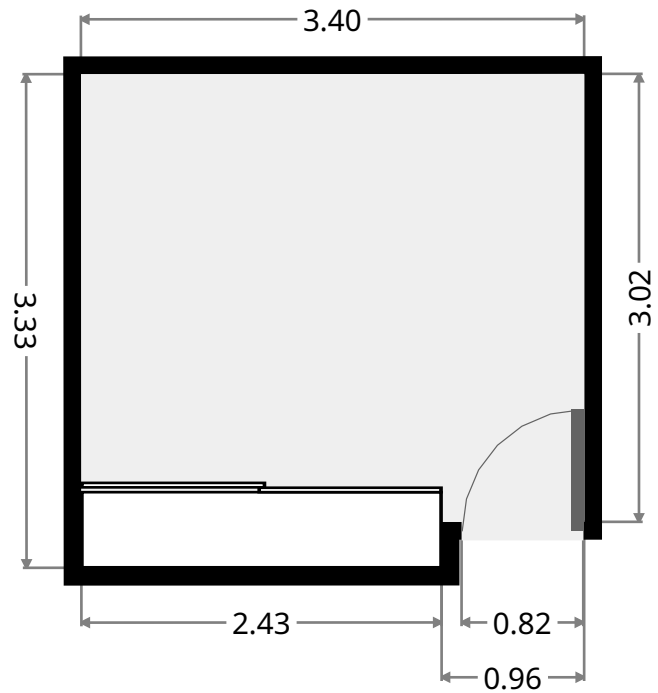
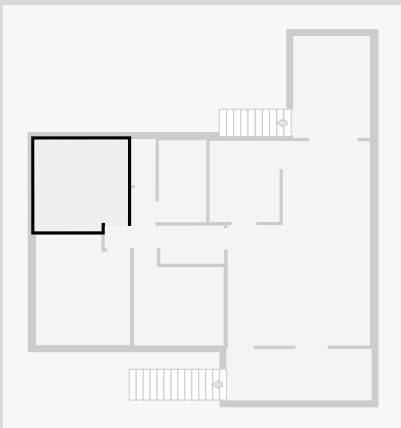
Bedroom

Width: 3.42 m
 Length: 4.01 m
 Area: 13.12 m²
 Perimeter: 14.89 m



Bedroom

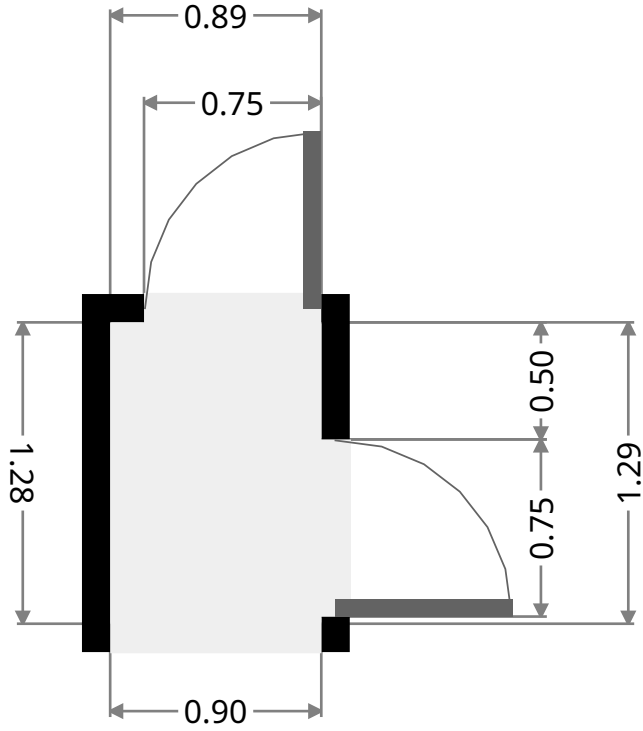
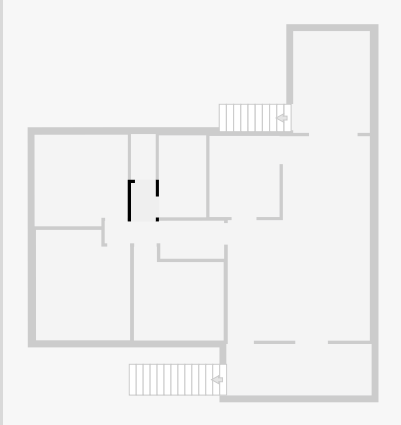
Width: 3.33 m
 Length: 3.40 m
 Area: 11.01 m²
 Perimeter: 13.45 m



254 Merrill Avenue

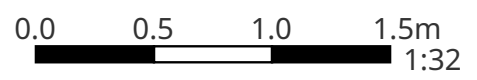
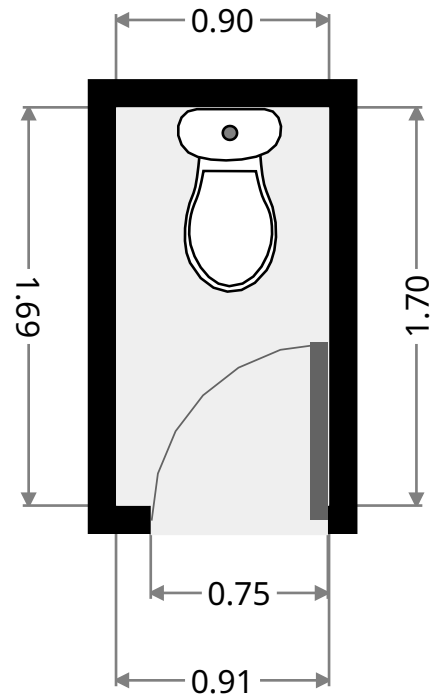
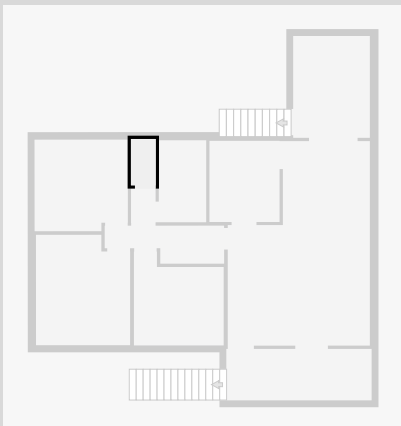
Hall

Width: 0.89 m
 Length: 1.29 m
 Area: 1.14 m²
 Perimeter: 4.34 m



Toilet

Width: 0.90 m
 Length: 1.70 m
 Area: 1.52 m²
 Perimeter: 5.18 m

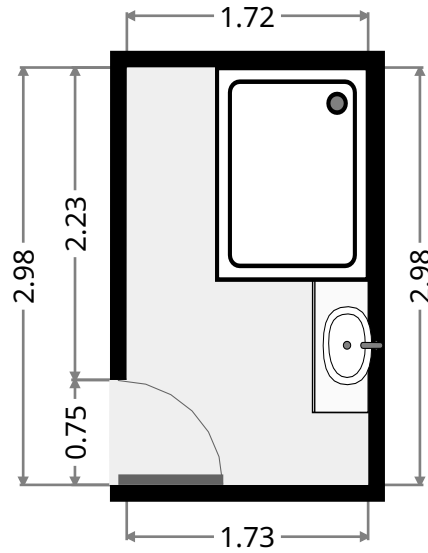
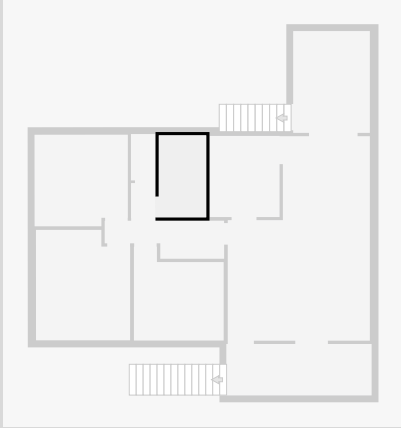


THIS FLOORPLAN IS PROVIDED WITHOUT WARRANTY OF ANY KIND. SENSOPIA DISCLAIMS ANY WARRANTY INCLUDING, WITHOUT LIMITATION, SATISFACTORY QUALITY OR ACCURACY OF DIMENSIONS.

254 Merrill Avenue

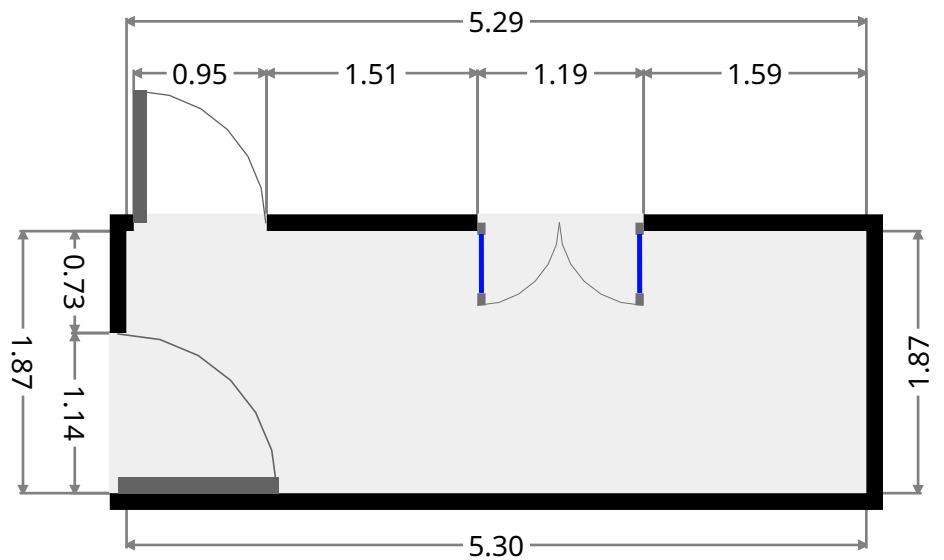
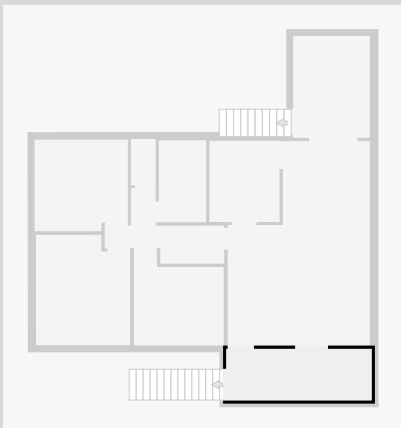
Bathroom

Width: 1.72 m
 Length: 2.98 m
 Area: 5.14 m²
 Perimeter: 9.41 m

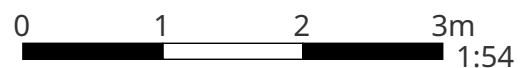


Front Verandah

Width: 1.87 m
 Length: 5.29 m
 Area: 9.90 m²
 Perimeter: 14.32 m



THIS FLOORPLAN IS PROVIDED WITHOUT WARRANTY OF ANY KIND. SENSOPIA DISCLAIMS ANY WARRANTY INCLUDING, WITHOUT LIMITATION, SATISFACTORY QUALITY OR ACCURACY OF DIMENSIONS.



254 Merrill Avenue

Deck

Width: 2.79 m
Length: 3.71 m
Area: 10.33 m²
Perimeter: 12.99 m

