

# 253 Merrill Avenue

**SUBMITTED BY**

Ray White Rockhampton Casey  
stockers@cqoz.com

---

**CREATED ON**

2021-11-01

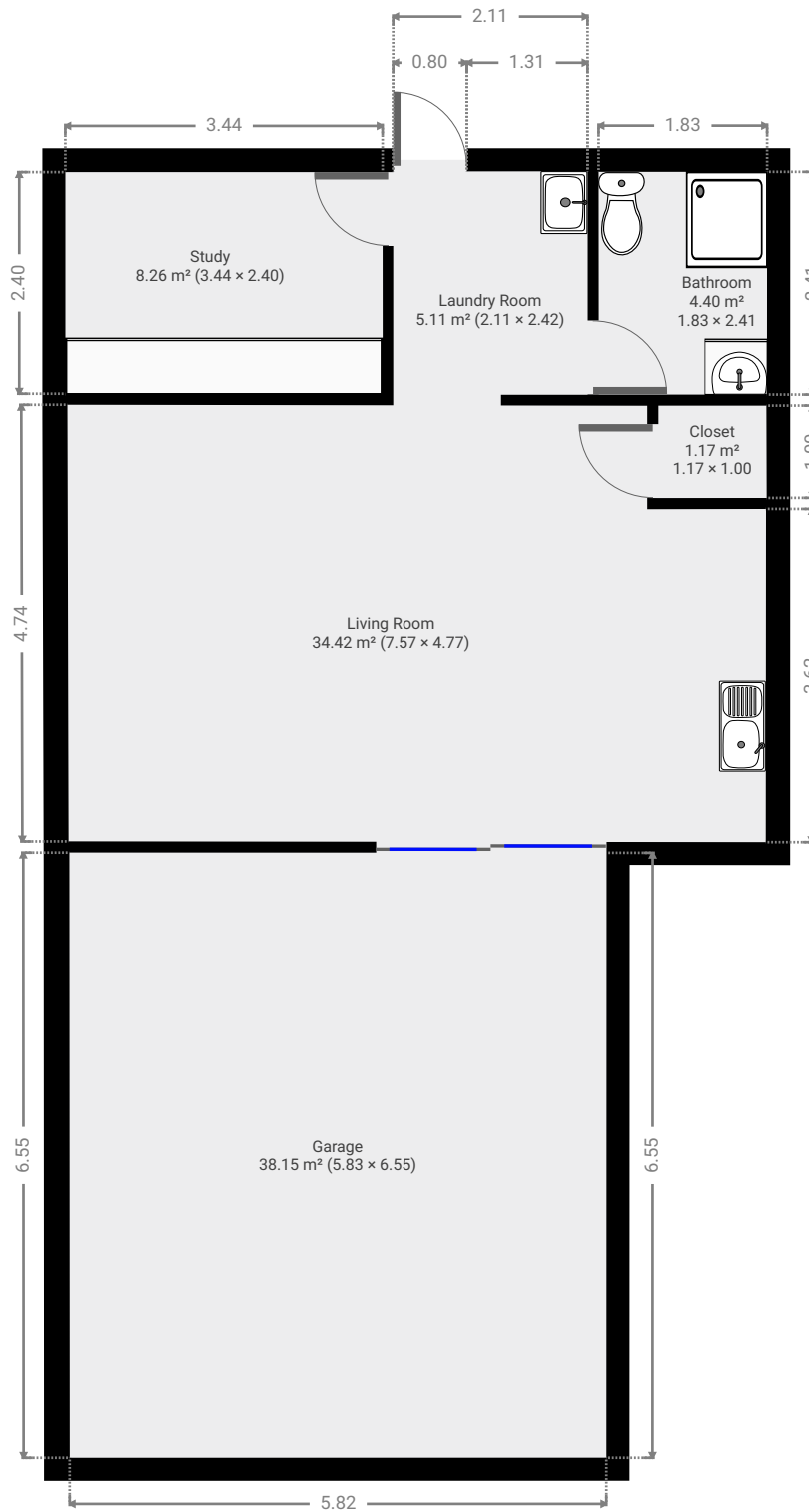
---

**Floors**

2

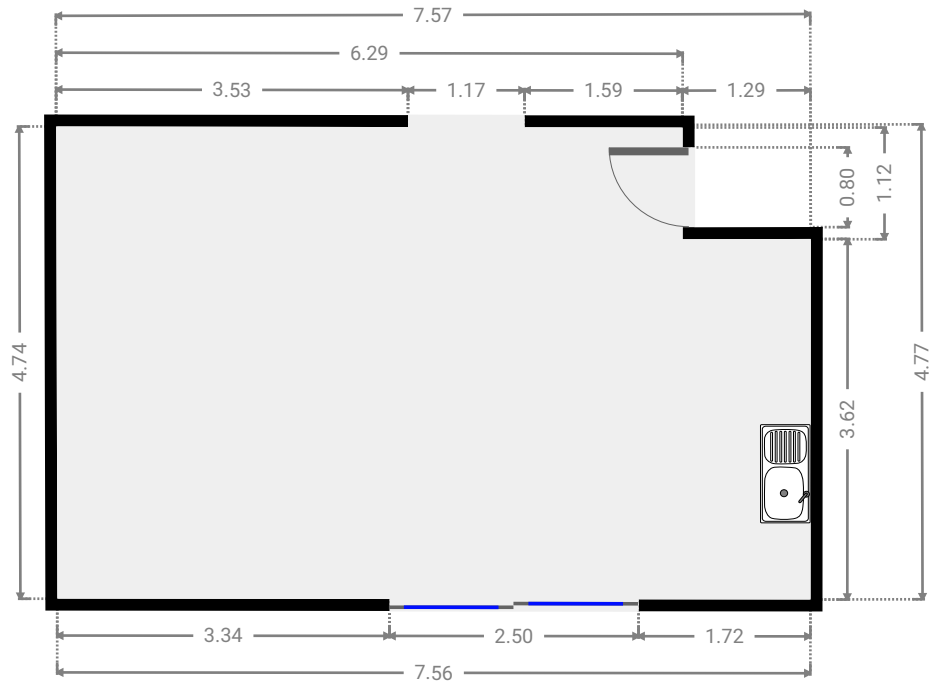
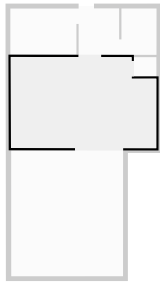
---

▼ Ground Floor



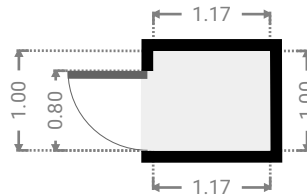
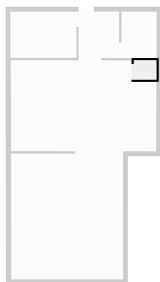
▼ Living Room  
Ground Floor

WIDTH: 7.57 m • LENGTH: 4.77 m  
AREA: 34.42 m<sup>2</sup> • PERIMETER: 24.62 m



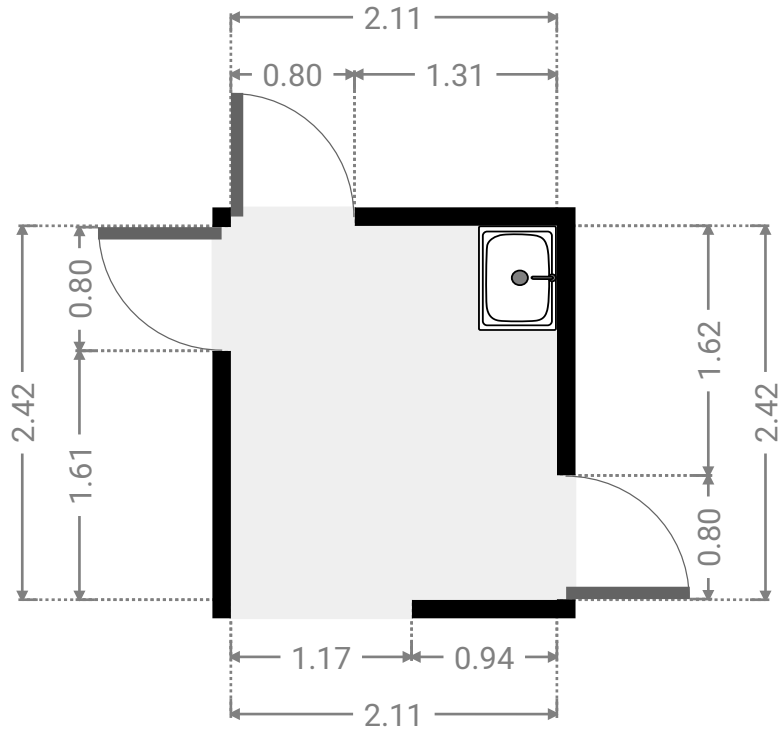
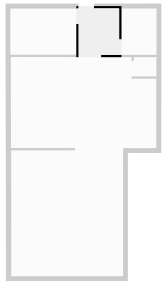
▼ Closet  
Ground Floor

WIDTH: 1.17 m • LENGTH: 1.00 m  
AREA: 1.17 m<sup>2</sup> • PERIMETER: 4.35 m



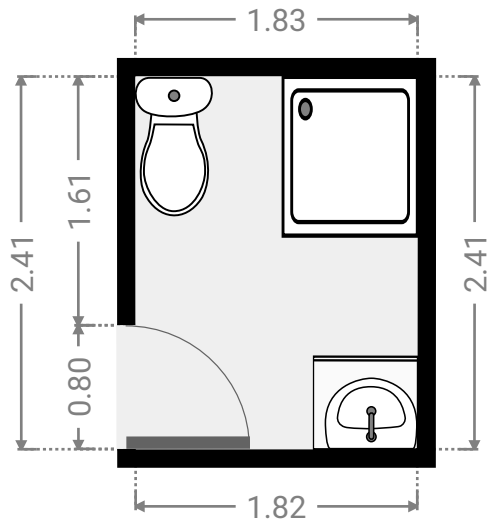
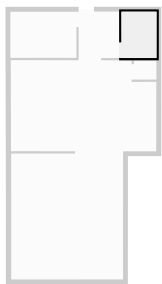
▼ Laundry Room  
Ground Floor

WIDTH: 2.11 m • LENGTH: 2.42 m  
AREA: 5.11 m<sup>2</sup> • PERIMETER: 9.06 m



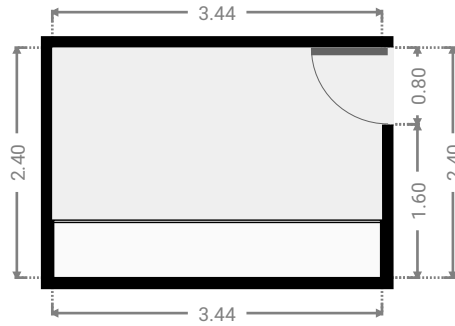
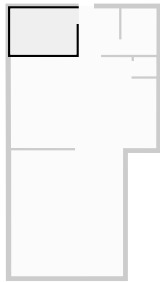
▼ Bathroom  
Ground Floor

WIDTH: 1.83 m • LENGTH: 2.41 m  
AREA: 4.40 m<sup>2</sup> • PERIMETER: 8.47 m



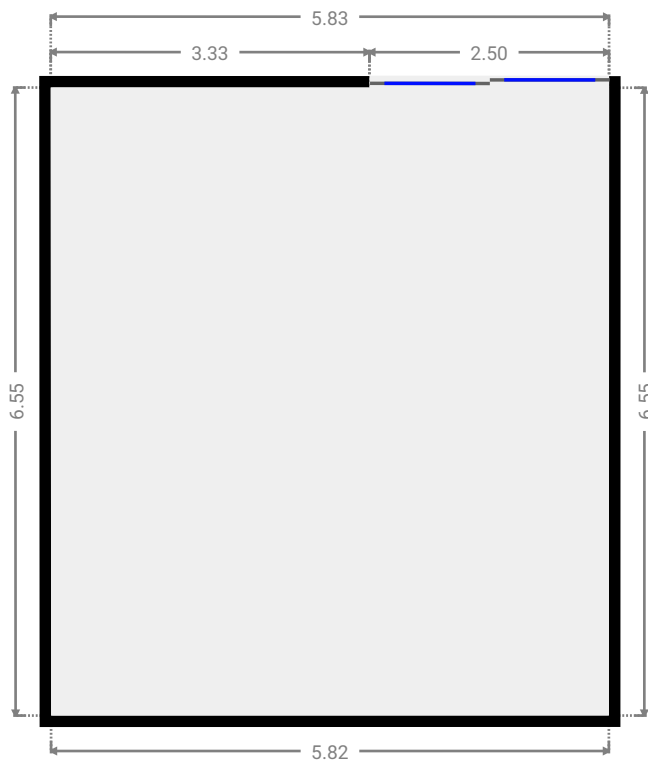
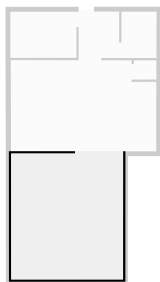
▼ **Study**  
Ground Floor

WIDTH: 3.44 m • LENGTH: 2.40 m  
AREA: 8.26 m<sup>2</sup> • PERIMETER: 11.68 m

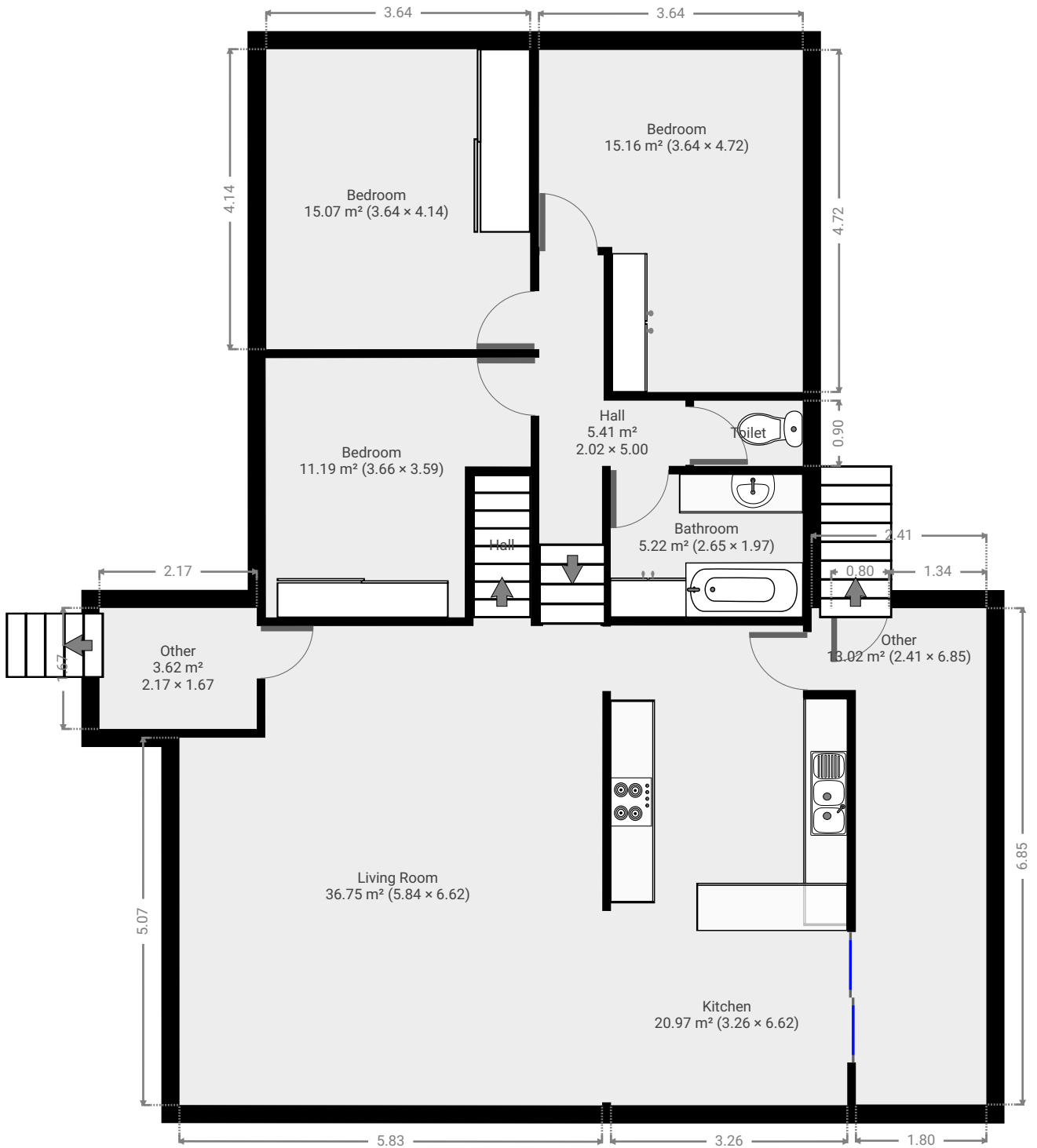


▼ **Garage**  
Ground Floor

WIDTH: 5.83 m • LENGTH: 6.55 m  
AREA: 38.15 m<sup>2</sup> • PERIMETER: 24.75 m

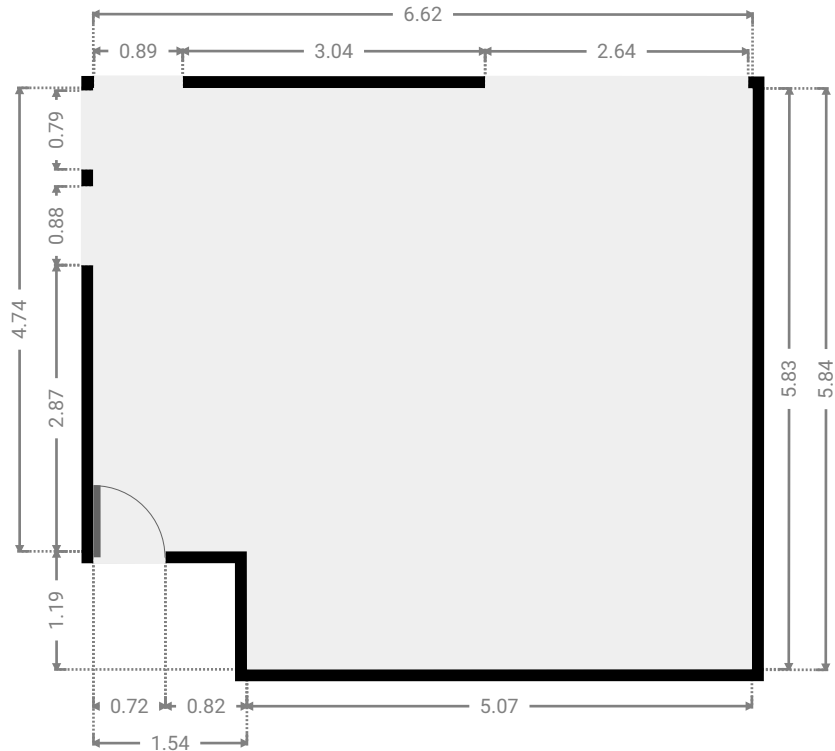
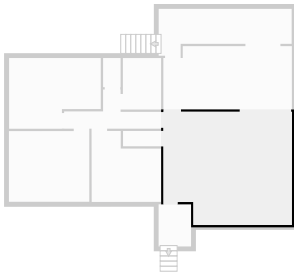


▼ 1st Floor



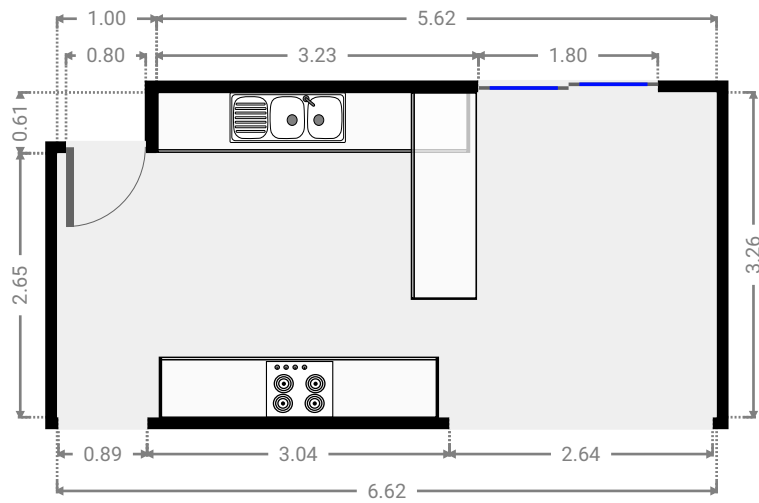
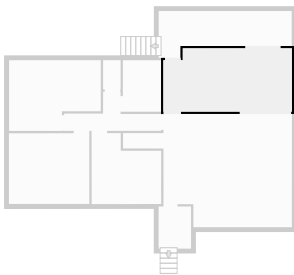
▼ **Living Room**  
1st Floor

WIDTH: 6.62 m • LENGTH: 5.84 m  
AREA: 36.75 m<sup>2</sup> • PERIMETER: 24.89 m



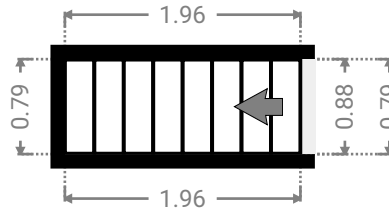
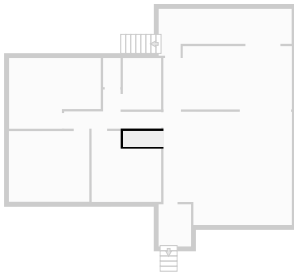
▼ **Kitchen**  
1st Floor

WIDTH: 6.62 m • LENGTH: 3.26 m  
AREA: 20.97 m<sup>2</sup> • PERIMETER: 19.76 m



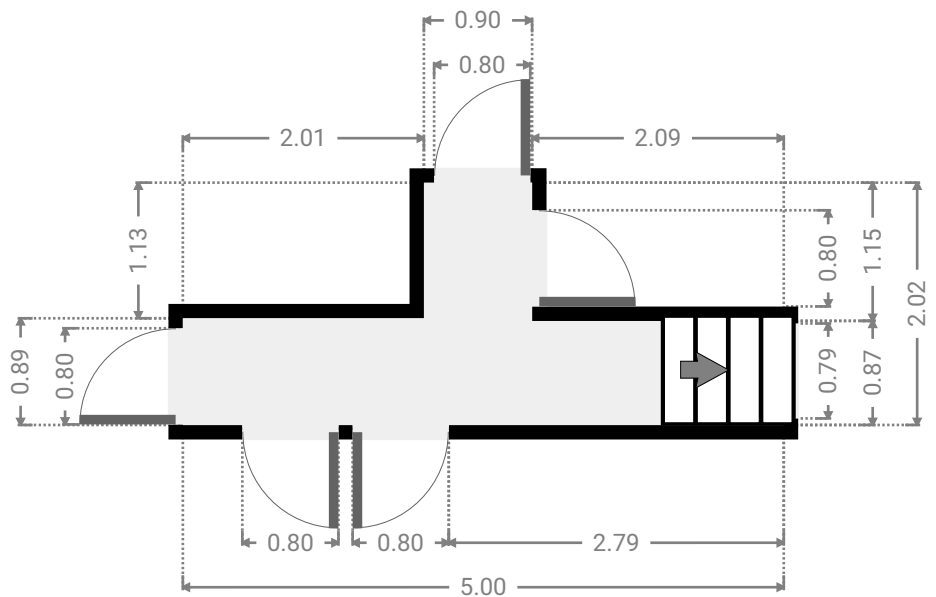
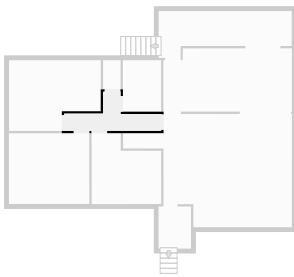
▼ **Hall**  
1st Floor

WIDTH: 1.96 m • LENGTH: 0.79 m  
AREA: 1.55 m<sup>2</sup> • PERIMETER: 5.50 m



▼ **Hall**  
1st Floor

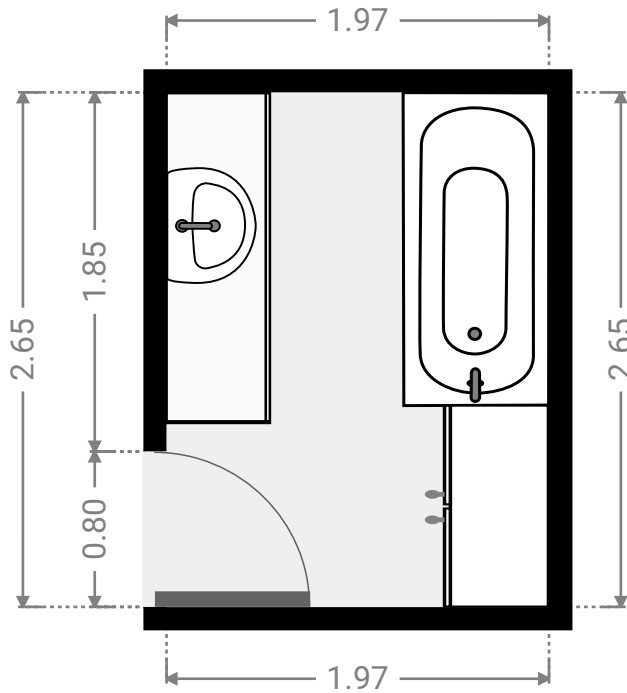
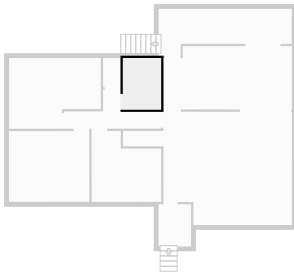
WIDTH: 5.00 m • LENGTH: 2.02 m  
AREA: 5.41 m<sup>2</sup> • PERIMETER: 14.03 m





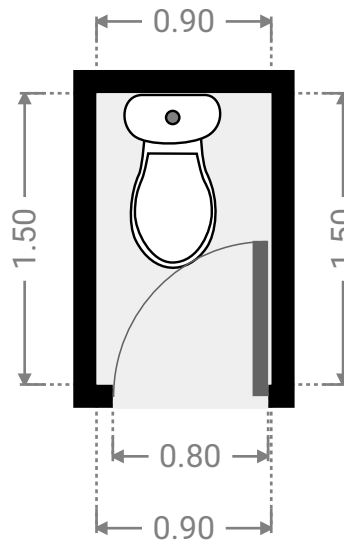
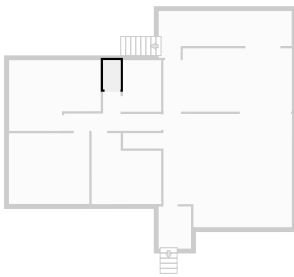
▼ **Bathroom**  
1st Floor

WIDTH: 1.97 m • LENGTH: 2.65 m  
AREA: 5.22 m<sup>2</sup> • PERIMETER: 9.24 m



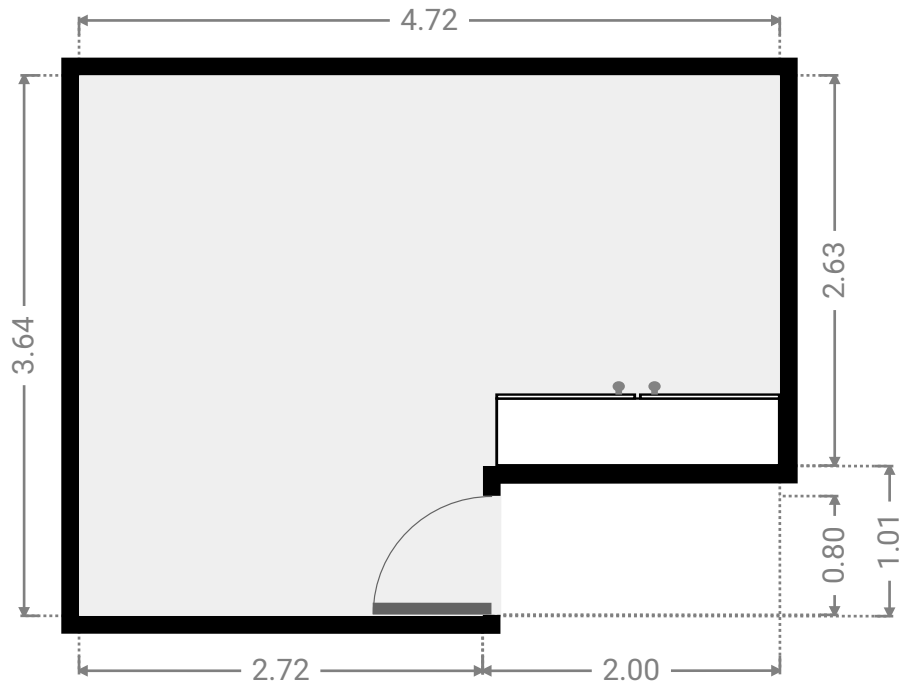
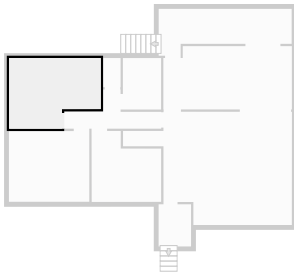
▼ **Toilet**  
1st Floor

WIDTH: 0.90 m • LENGTH: 1.50 m  
AREA: 1.35 m<sup>2</sup> • PERIMETER: 4.80 m



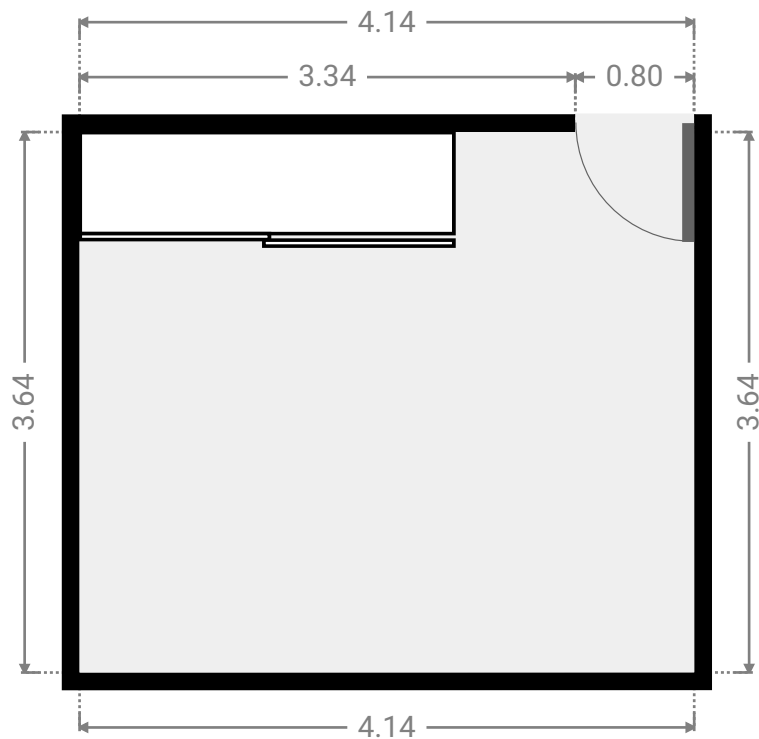
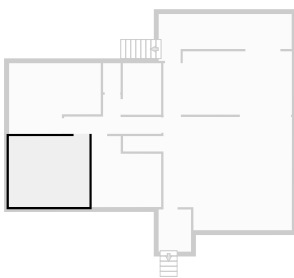
▼ Bedroom  
1st Floor

WIDTH: 4.72 m • LENGTH: 3.64 m  
AREA: 15.16 m<sup>2</sup> • PERIMETER: 16.72 m



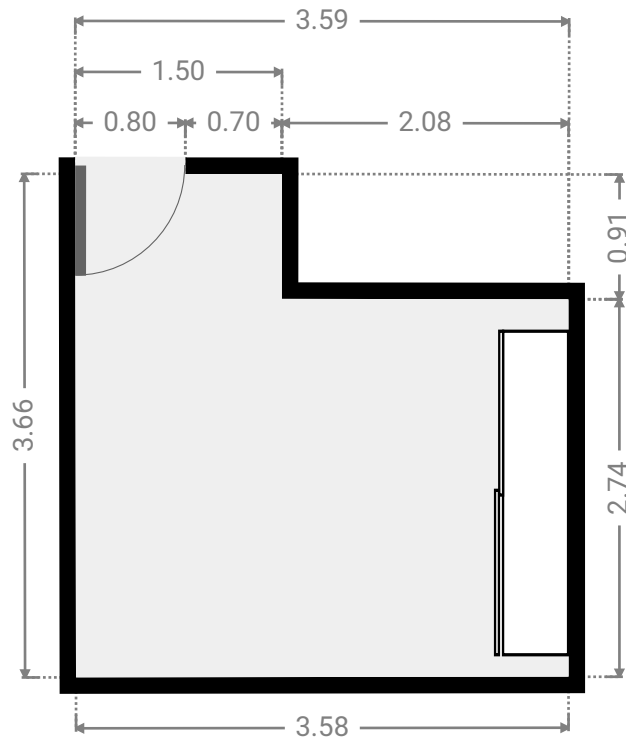
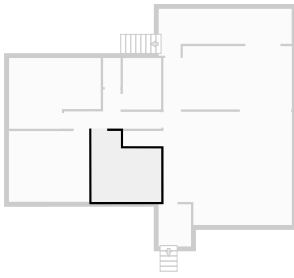
▼ Bedroom  
1st Floor

WIDTH: 4.14 m • LENGTH: 3.64 m  
AREA: 15.07 m<sup>2</sup> • PERIMETER: 15.56 m



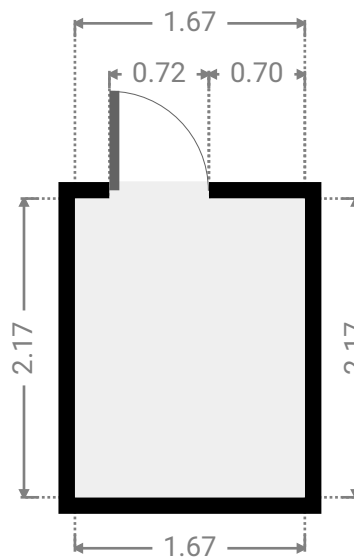
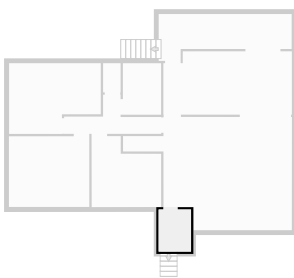
▼ **Bedroom**  
1st Floor

WIDTH: 3.59 m • LENGTH: 3.66 m  
AREA: 11.19 m<sup>2</sup> • PERIMETER: 14.47 m



▼ **Other**  
1st Floor

WIDTH: 1.67 m • LENGTH: 2.17 m  
AREA: 3.62 m<sup>2</sup> • PERIMETER: 7.68 m



▼ Other  
1st Floor

WIDTH: 6.85 m • LENGTH: 2.41 m  
AREA: 13.02 m<sup>2</sup> • PERIMETER: 18.52 m

