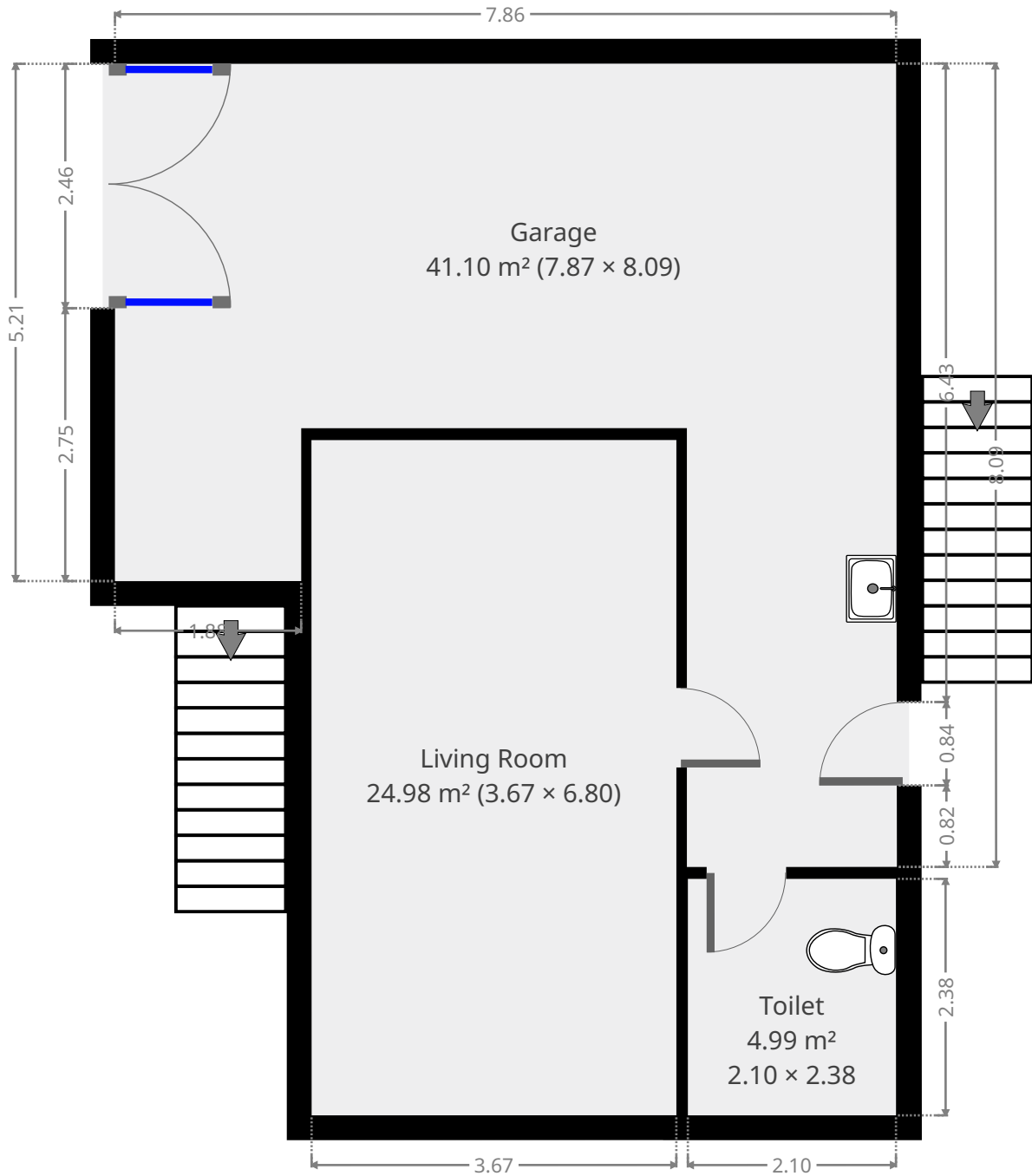
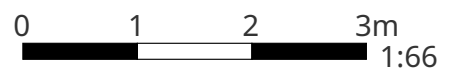


252 Carlton Street

Ground Floor



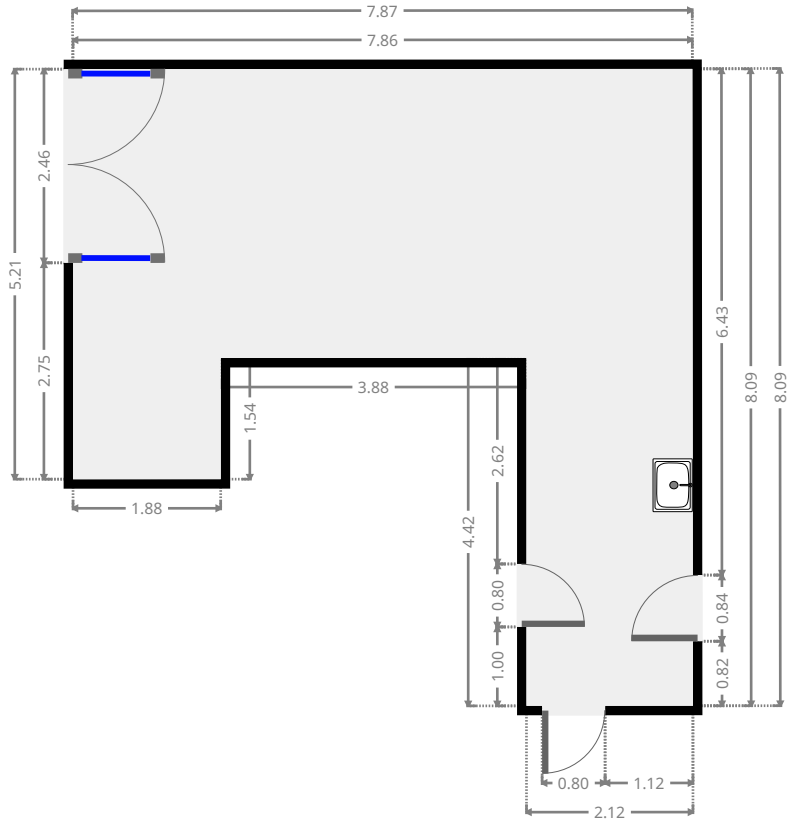
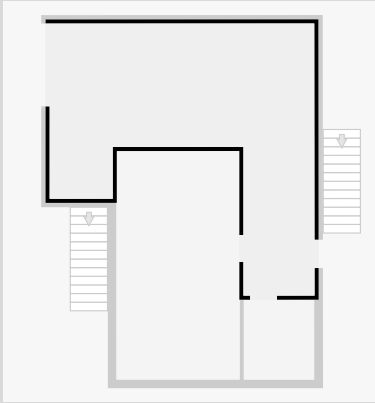
THIS FLOORPLAN IS PROVIDED WITHOUT WARRANTY OF ANY KIND. SENSOPIA DISCLAIMS ANY WARRANTY INCLUDING, WITHOUT LIMITATION, SATISFACTORY QUALITY OR ACCURACY OF DIMENSIONS.



252 Carlton Street

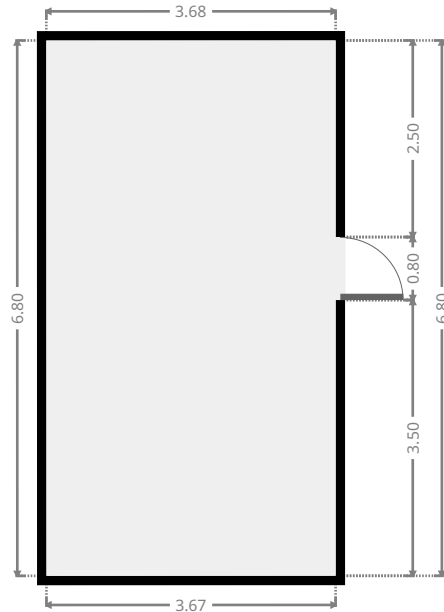
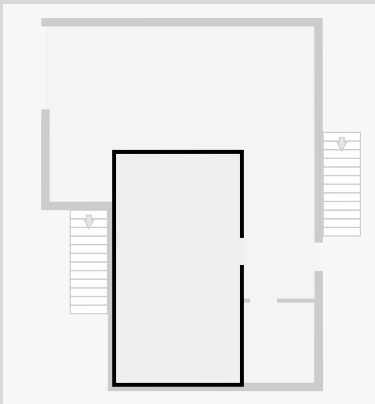
Garage

Width: 7.87 m
 Length: 8.09 m
 Area: 41.10 m²
 Perimeter: 35.00 m



Living Room

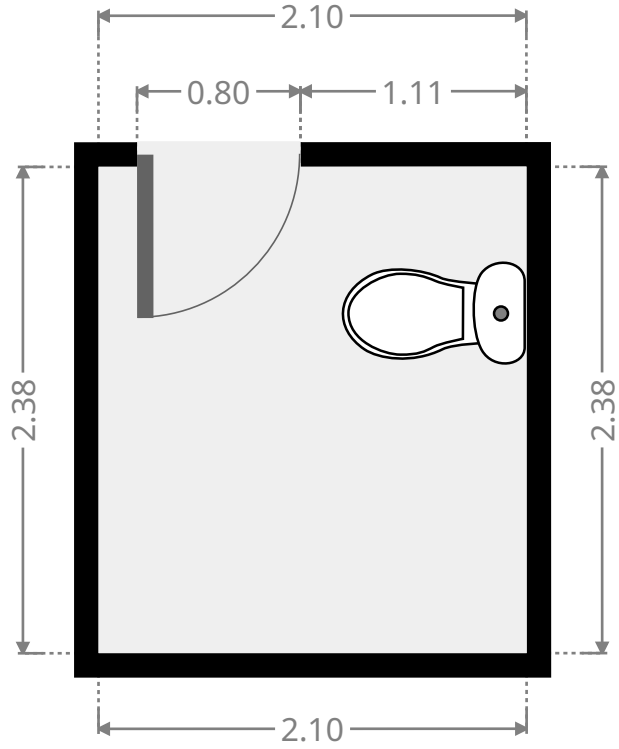
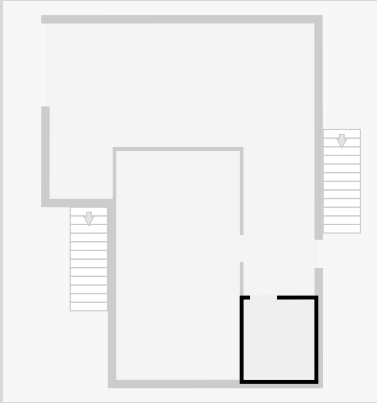
Width: 3.67 m
 Length: 6.80 m
 Area: 24.98 m²
 Perimeter: 20.95 m



252 Carlton Street

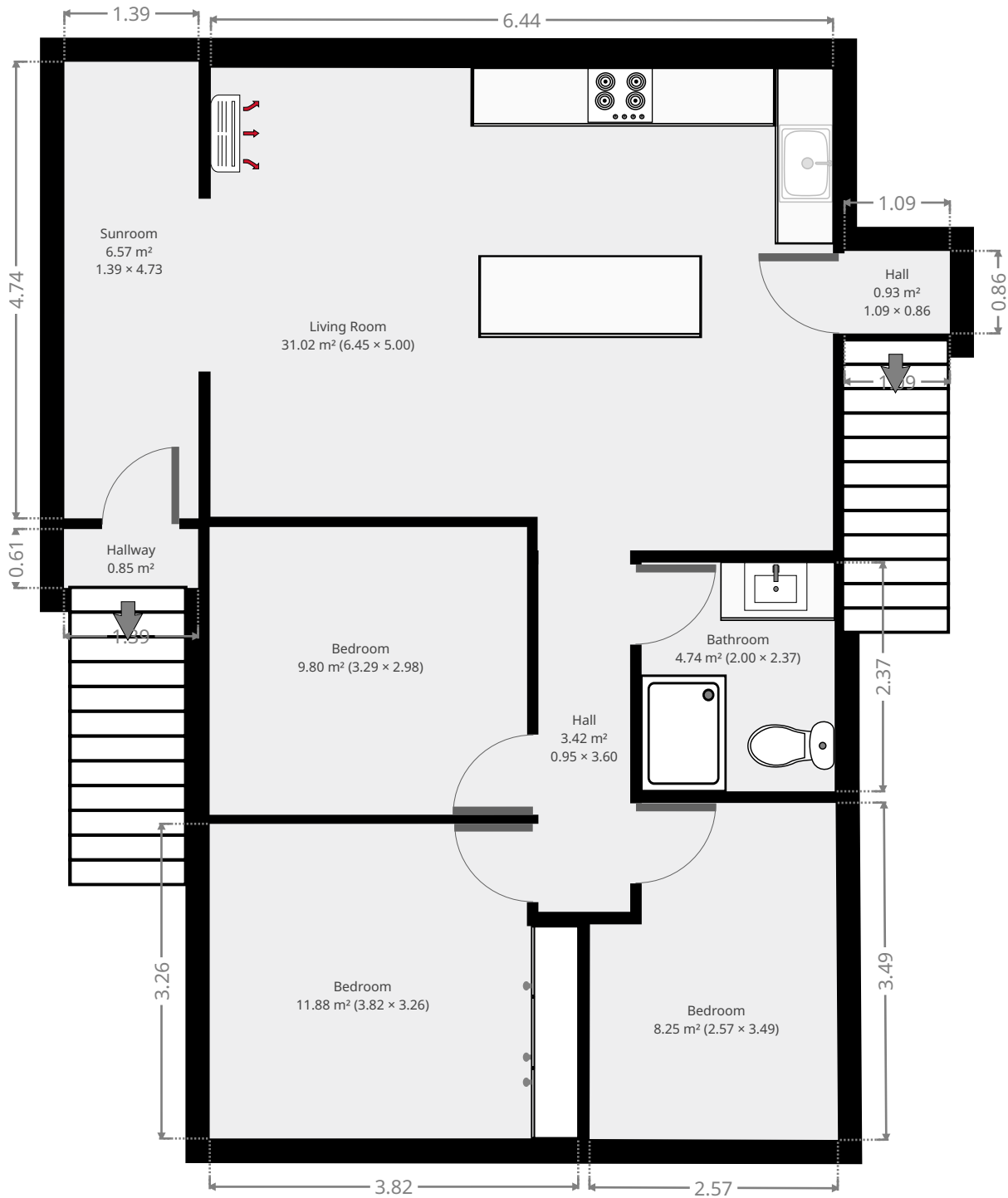
Toilet / Half Bath

Width:	2.10 m
Length:	2.38 m
Area	4.99 m ²
Perimeter	8.95 m



252 Carlton Street

1st Floor



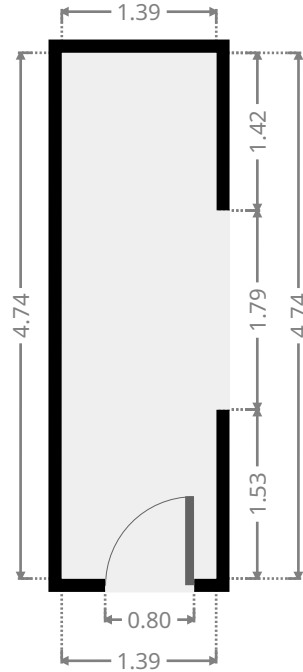
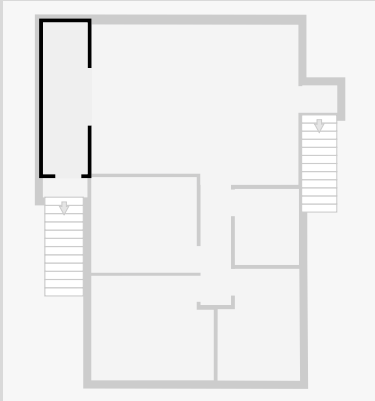
THIS FLOORPLAN IS PROVIDED WITHOUT WARRANTY OF ANY KIND. SENSOPIA DISCLAIMS ANY WARRANTY INCLUDING, WITHOUT LIMITATION, SATISFACTORY QUALITY OR ACCURACY OF DIMENSIONS.



252 Carlton Street

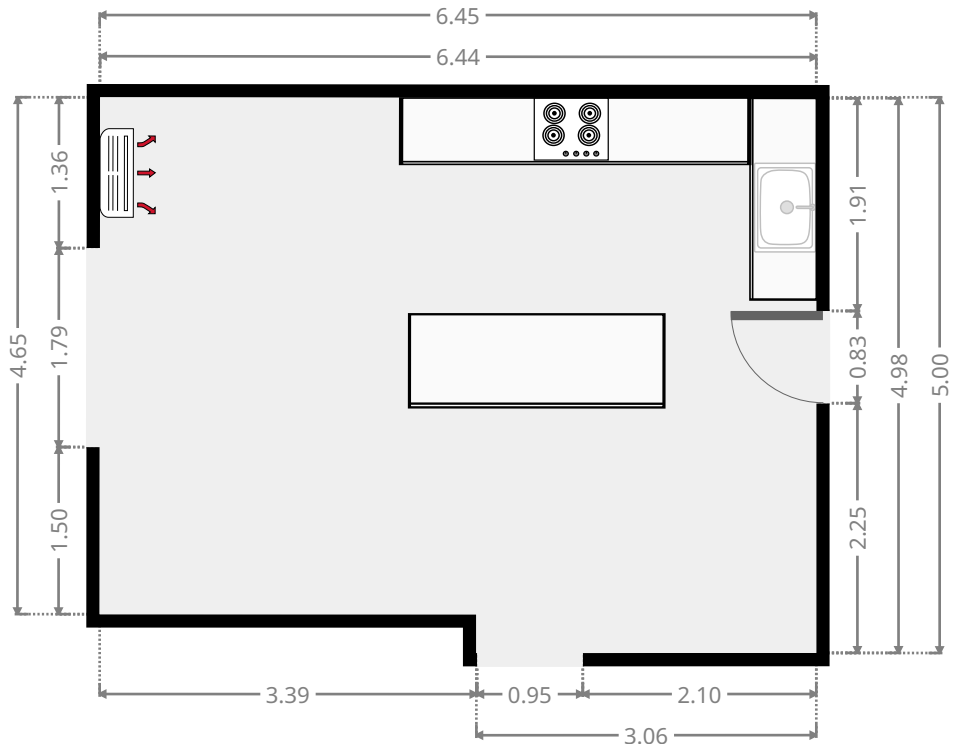
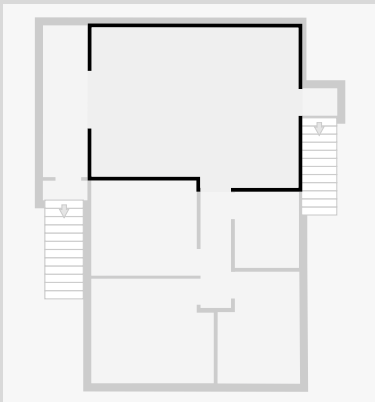
Sunroom

Width: 1.39 m
 Length: 4.73 m
 Area: 6.57 m²
 Perimeter: 12.24 m



Living Room

Width: 5.00 m
 Length: 6.45 m
 Area: 31.02 m²
 Perimeter: 22.88 m

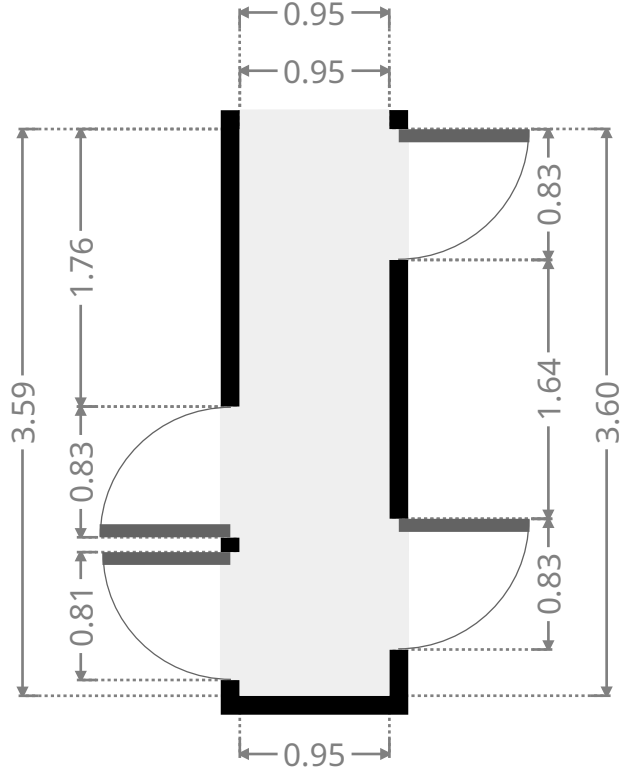
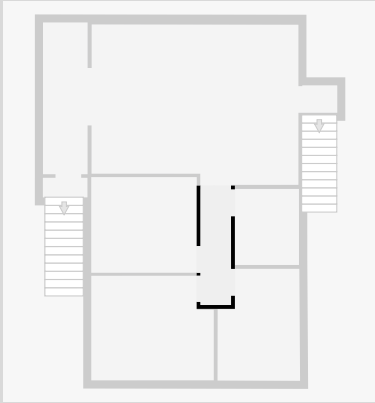


THIS FLOORPLAN IS PROVIDED WITHOUT WARRANTY OF ANY KIND. SENSOPIA DISCLAIMS ANY WARRANTY INCLUDING, WITHOUT LIMITATION, SATISFACTORY QUALITY OR ACCURACY OF DIMENSIONS.

252 Carlton Street

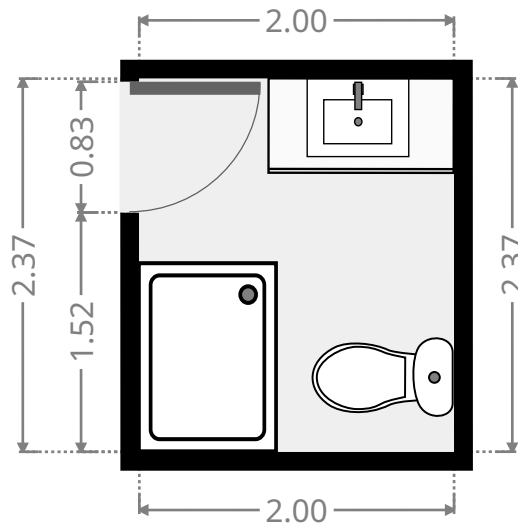
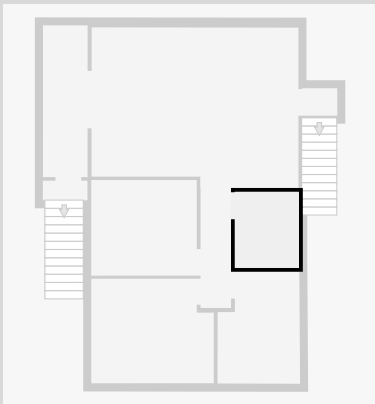
Hall

Width: 0.95 m
Length: 3.60 m
Area: 3.42 m²
Perimeter: 9.10 m



Bathroom

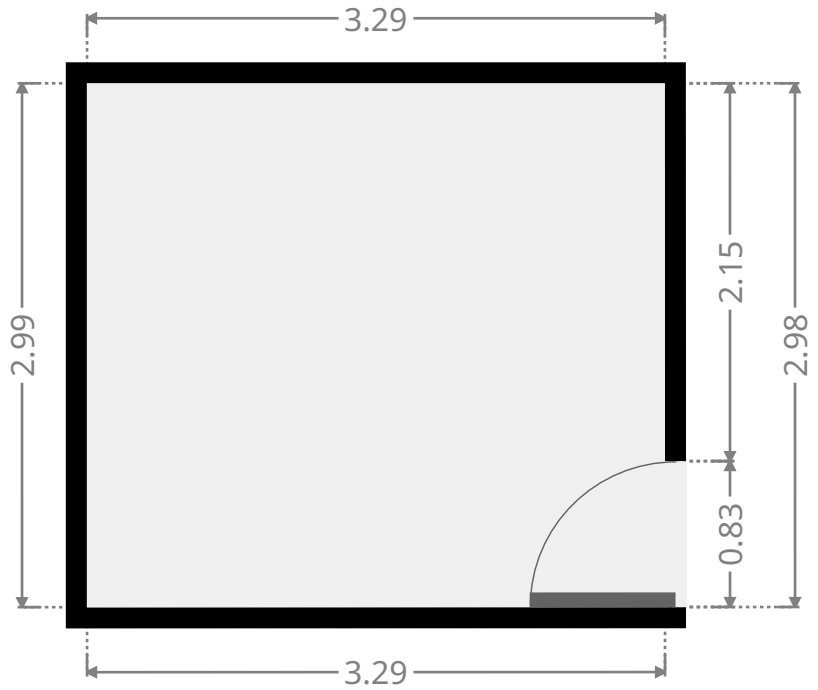
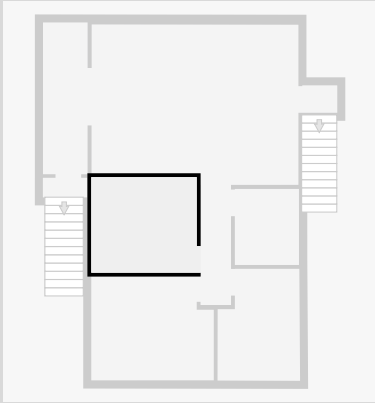
Width: 2.00 m
Length: 2.37 m
Area: 4.74 m²
Perimeter: 8.74 m



252 Carlton Street

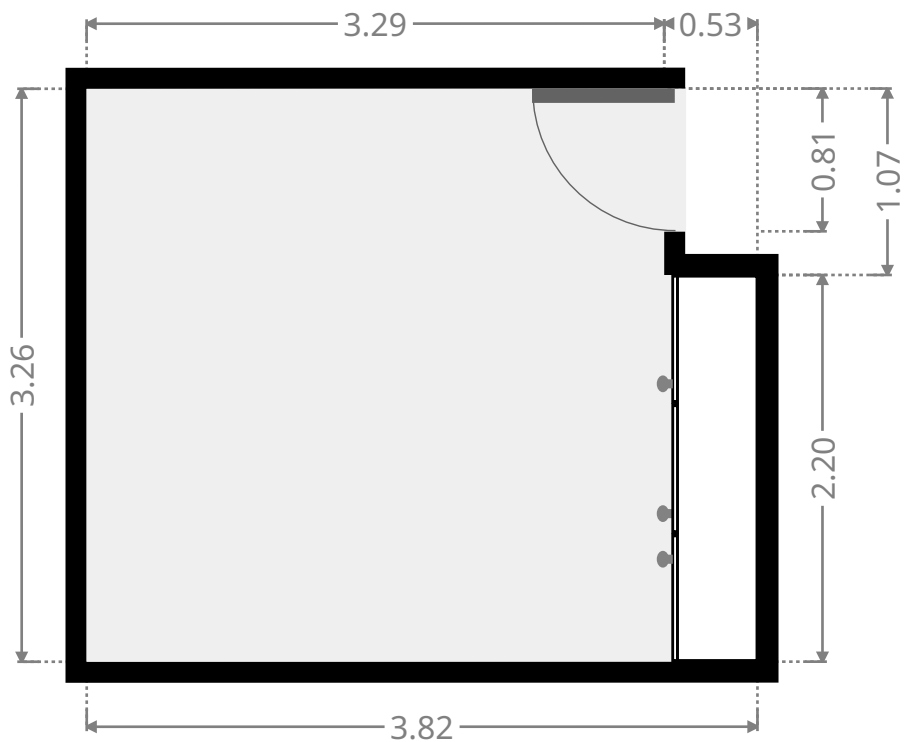
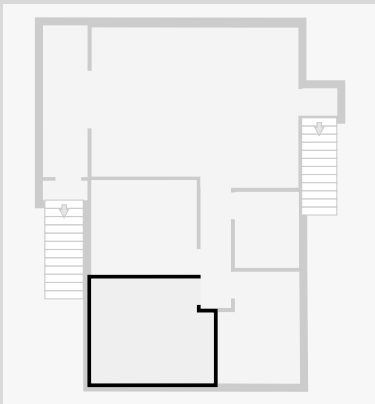
Bedroom

Width: 2.98 m
 Length: 3.29 m
 Area: 9.80 m²
 Perimeter: 12.54 m

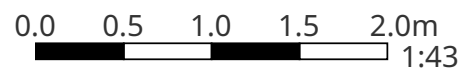


Bedroom

Width: 3.26 m
 Length: 3.82 m
 Area: 11.88 m²
 Perimeter: 14.15 m



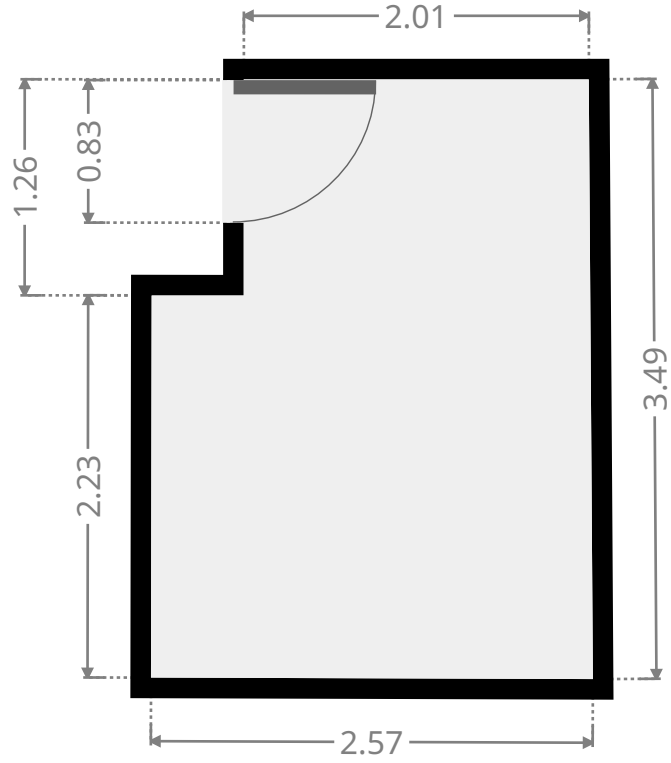
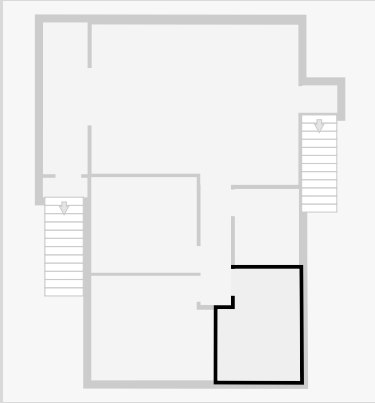
THIS FLOORPLAN IS PROVIDED WITHOUT WARRANTY OF ANY KIND. SENSOPIA DISCLAIMS ANY WARRANTY INCLUDING, WITHOUT LIMITATION, SATISFACTORY QUALITY OR ACCURACY OF DIMENSIONS.



252 Carlton Street

Bedroom

Width: 2.57 m
Length: 3.49 m
Area: 8.25 m²
Perimeter: 12.09 m



Hall

Width: 0.86 m
Length: 1.09 m
Area: 0.93 m²
Perimeter: 3.89 m

