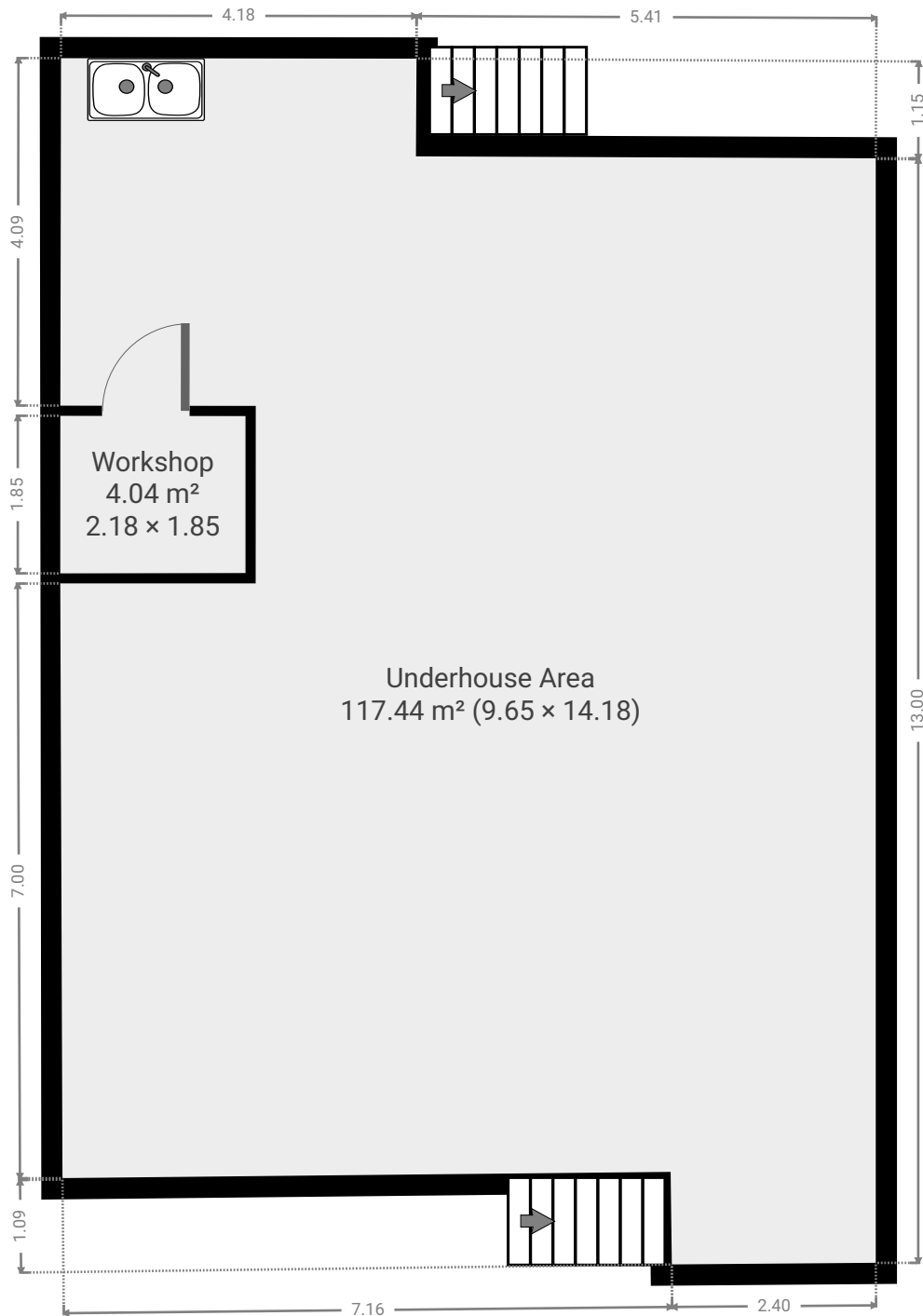


# 248 Upper Dawson Road

Created on  
2021-09-28

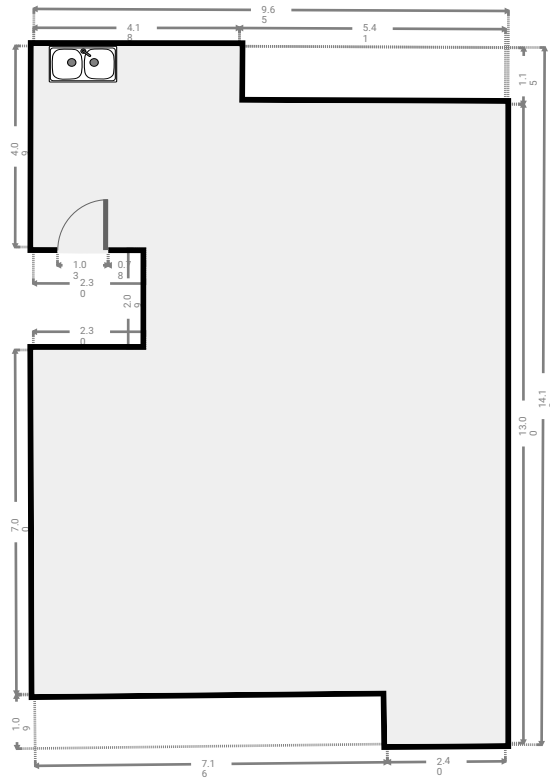
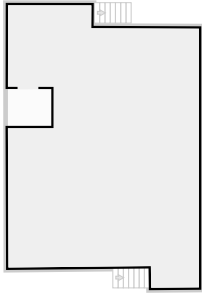
Floors  
2

▼ Basement



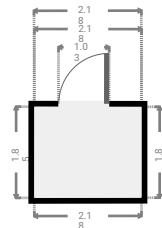
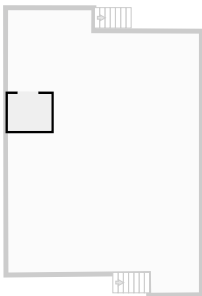
▼ Underhouse Area  
Basement

WIDTH: 9.65 m • LENGTH: 14.18 m  
AREA: 117.44 m<sup>2</sup> • PERIMETER: 52.17 m

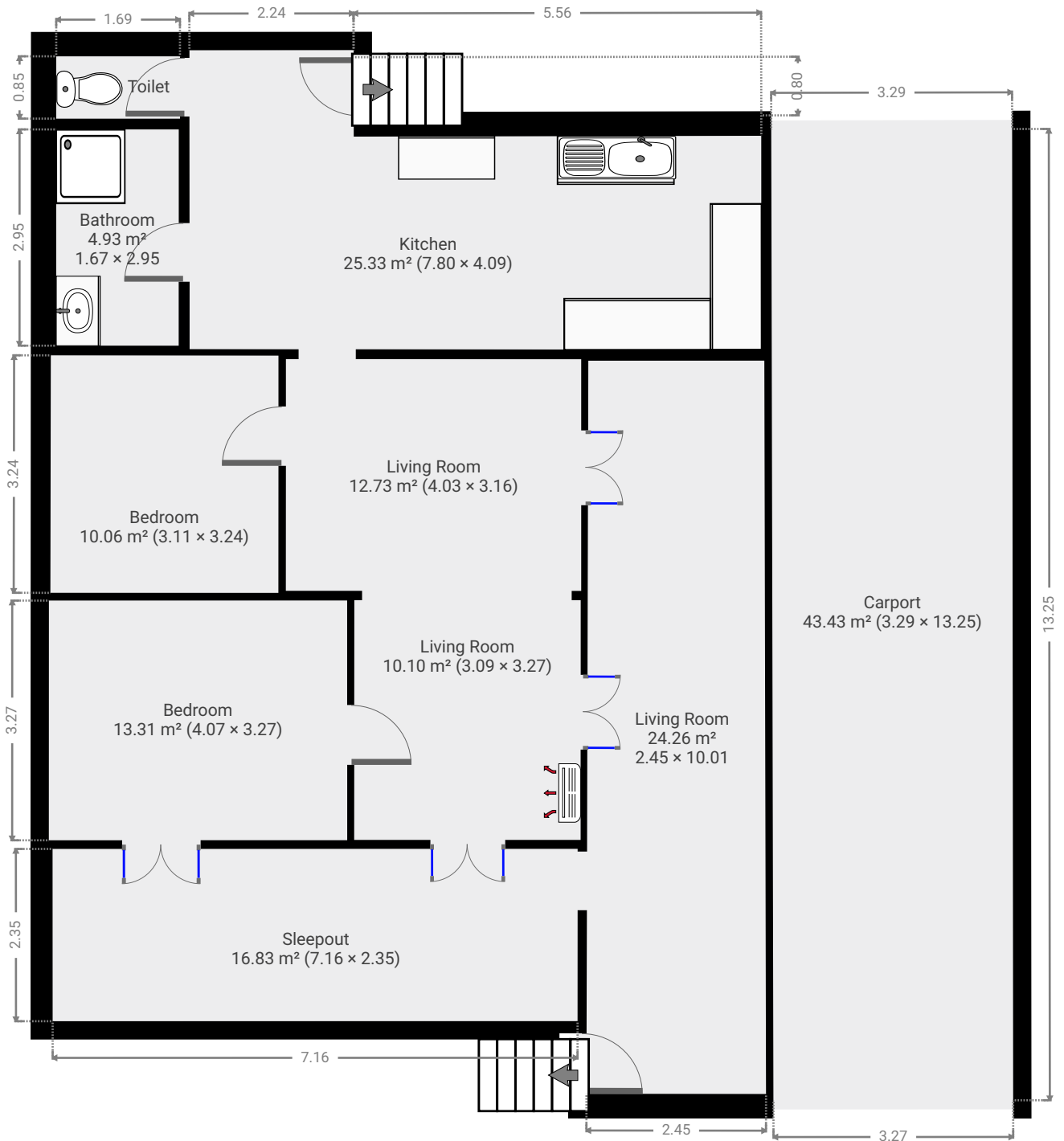


▼ Workshop  
Basement

WIDTH: 2.18 m • LENGTH: 1.85 m  
AREA: 4.04 m<sup>2</sup> • PERIMETER: 8.06 m

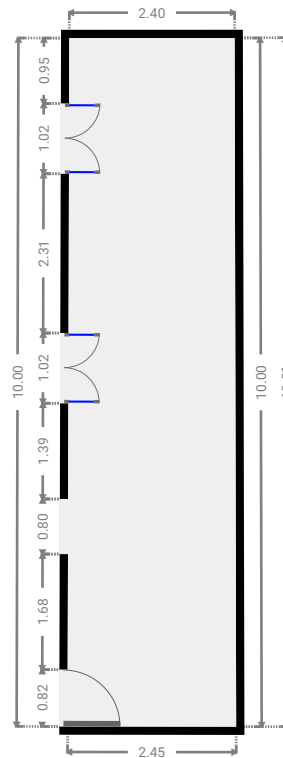
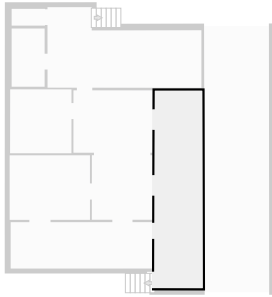


▼ Ground Floor



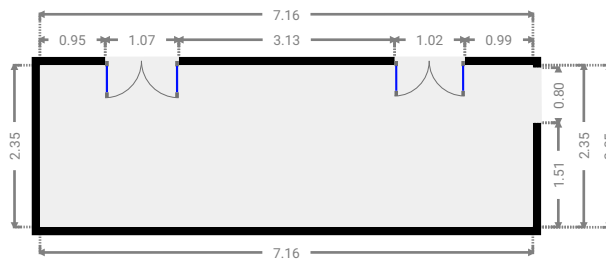
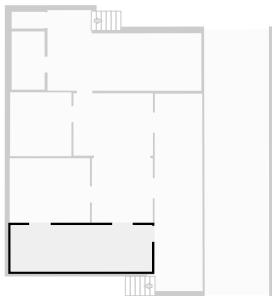
▼ Living Room  
Ground Floor

WIDTH: 2.45 m • LENGTH: 10.01 m  
AREA: 24.26 m<sup>2</sup> • PERIMETER: 24.85 m



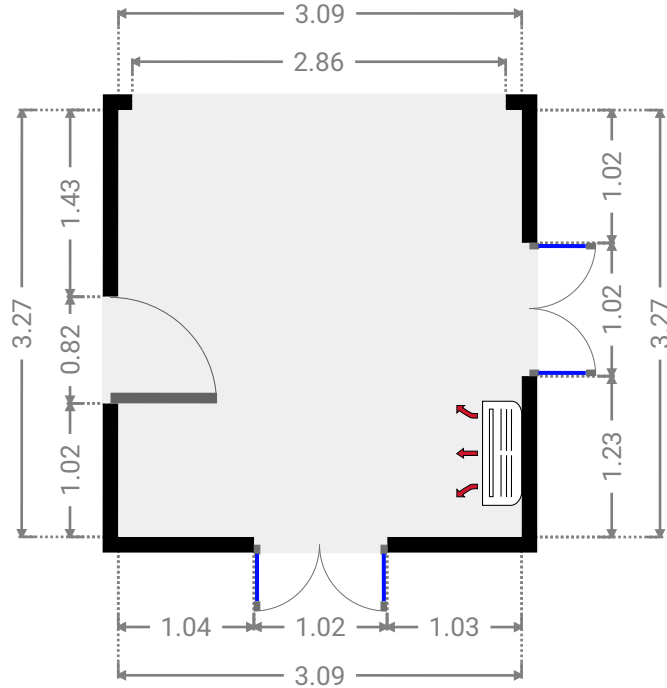
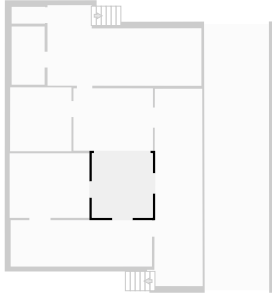
▼ Sleepout  
Ground Floor

WIDTH: 7.16 m • LENGTH: 2.35 m  
AREA: 16.83 m<sup>2</sup> • PERIMETER: 19.02 m



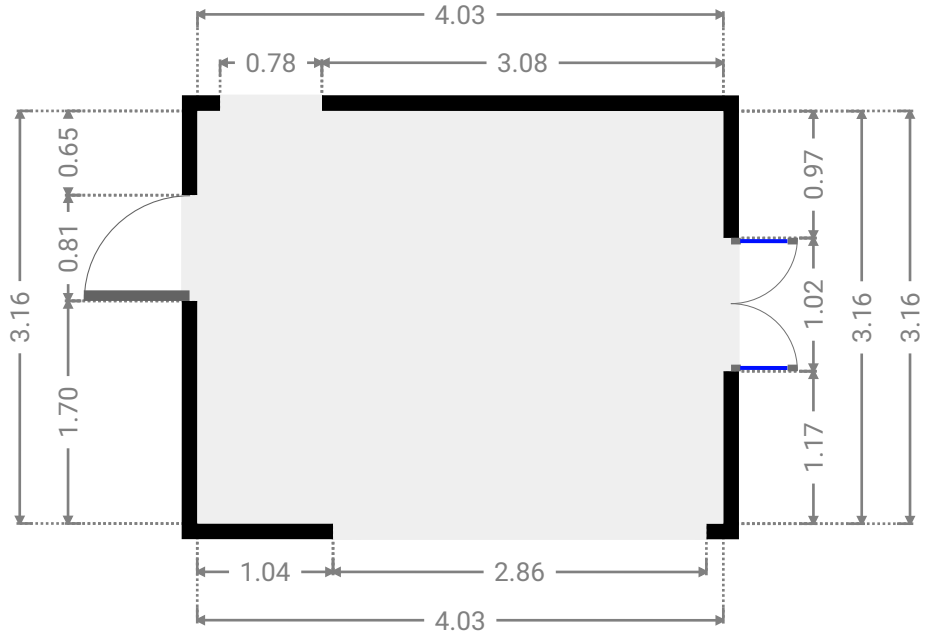
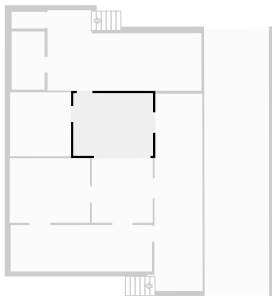
▼ Living Room  
Ground Floor

WIDTH: 3.09 m • LENGTH: 3.27 m  
AREA: 10.10 m<sup>2</sup> • PERIMETER: 12.72 m



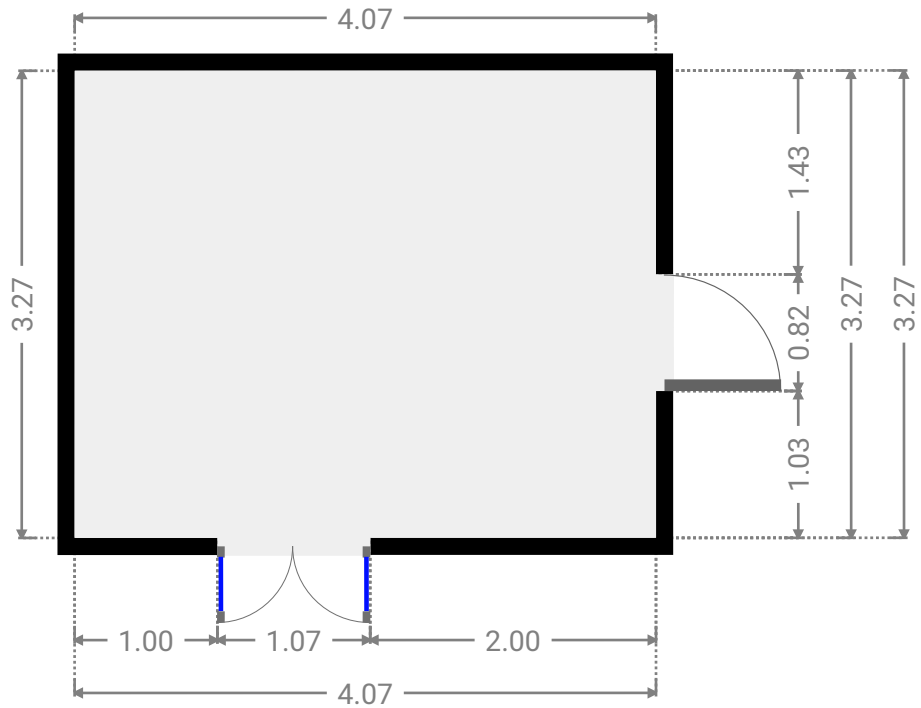
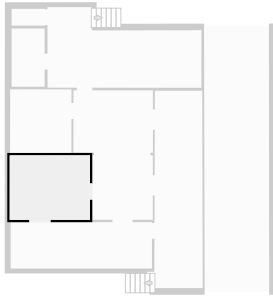
▼ Living Room  
Ground Floor

WIDTH: 4.03 m • LENGTH: 3.16 m  
AREA: 12.73 m<sup>2</sup> • PERIMETER: 14.38 m



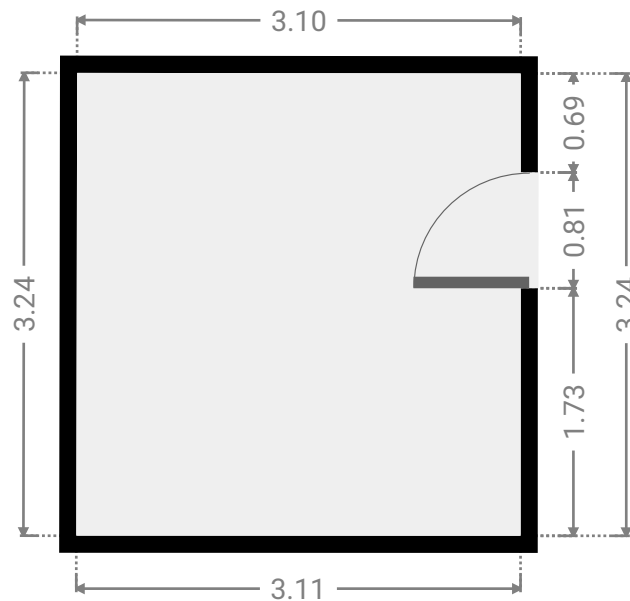
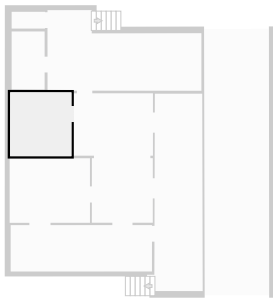
▼ **Bedroom**  
Ground Floor

WIDTH: 4.07 m • LENGTH: 3.27 m  
AREA: 13.31 m<sup>2</sup> • PERIMETER: 14.68 m



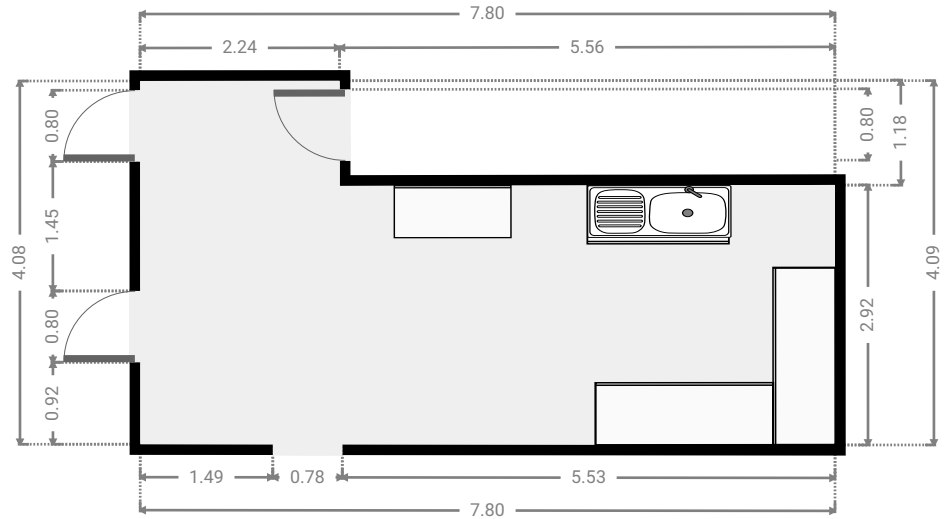
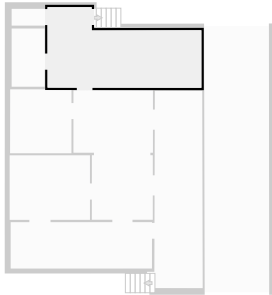
▼ **Bedroom**  
Ground Floor

WIDTH: 3.11 m • LENGTH: 3.24 m  
AREA: 10.06 m<sup>2</sup> • PERIMETER: 12.69 m



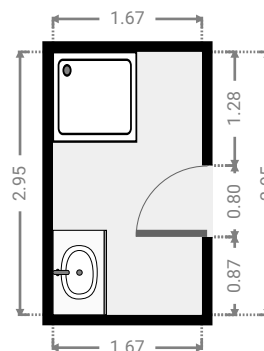
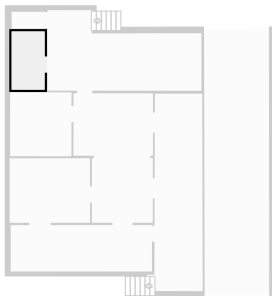
▼ **Kitchen**  
Ground Floor

WIDTH: 7.80 m • LENGTH: 4.09 m  
AREA: 25.33 m<sup>2</sup> • PERIMETER: 23.78 m



▼ **Bathroom**  
Ground Floor

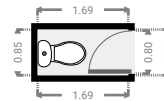
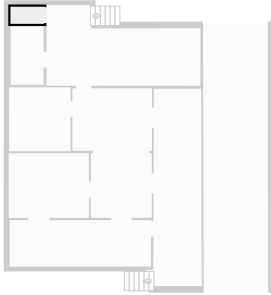
WIDTH: 1.67 m • LENGTH: 2.95 m  
AREA: 4.93 m<sup>2</sup> • PERIMETER: 9.24 m





▼ Toilet  
Ground Floor

WIDTH: 1.69 m • LENGTH: 0.85 m  
AREA: 1.44 m<sup>2</sup> • PERIMETER: 5.08 m



▼ Carport  
Ground Floor

WIDTH: 3.29 m • LENGTH: 13.25 m  
AREA: 43.43 m<sup>2</sup> • PERIMETER: 33.05 m

