

# 247 Diplock Street

**SUBMITTED BY**

Ray White Rockhampton Casey  
stockers@cqoz.com

---

**CREATED ON**

2022-05-24

---

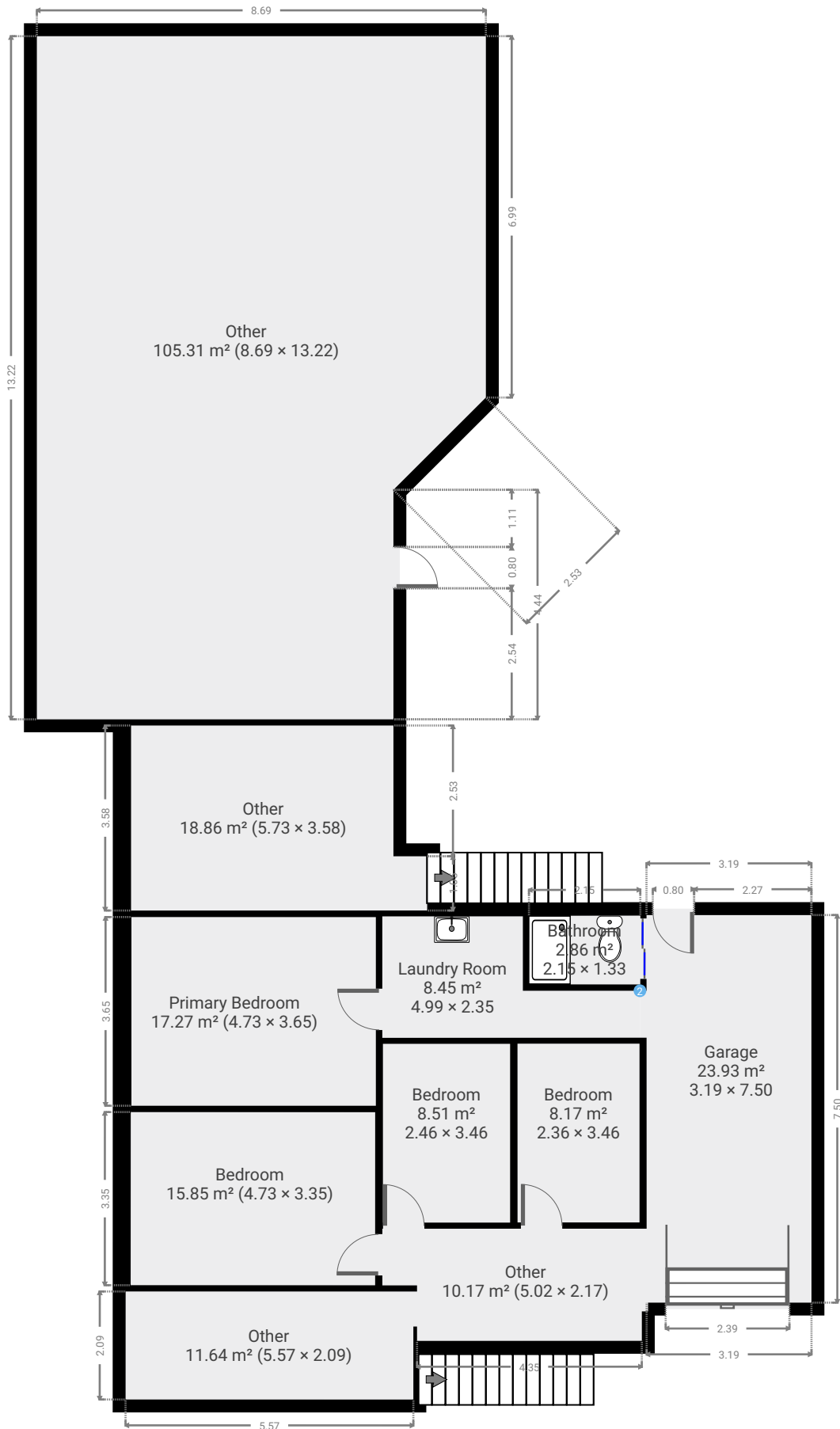
**Floors**

2

---

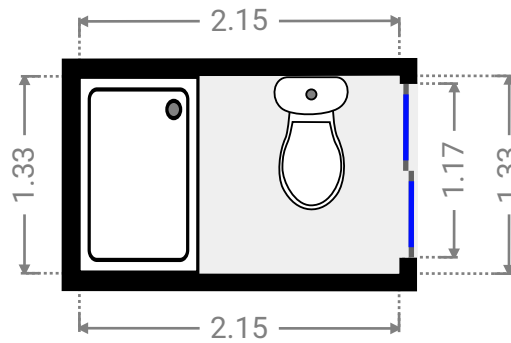
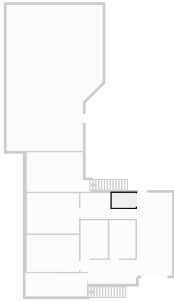
---

▼ Ground Floor



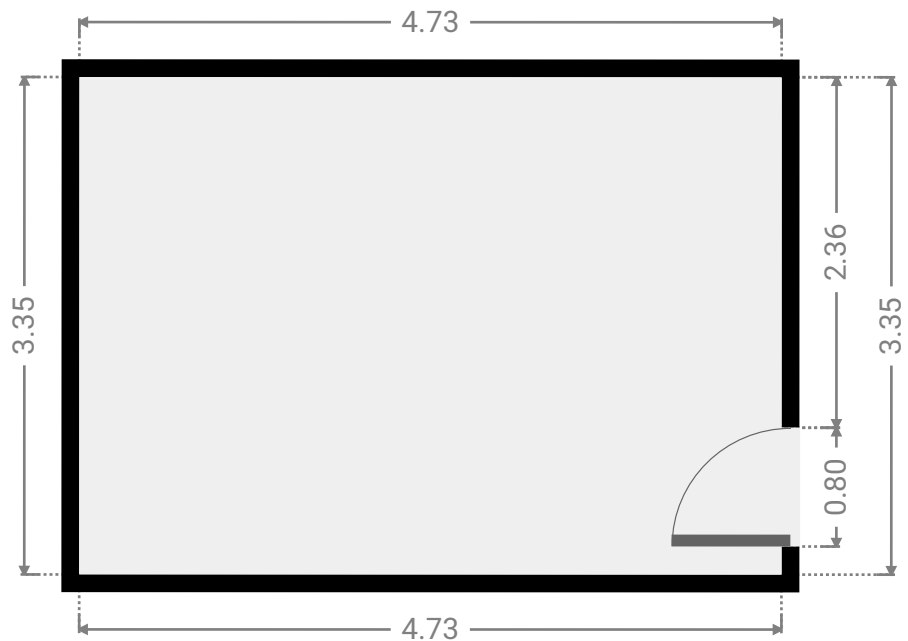
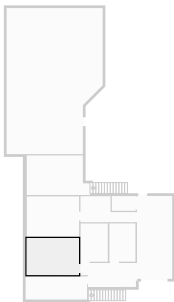
▼ **Bathroom**  
Ground Floor

WIDTH: 2.15 m • LENGTH: 1.33 m  
AREA: 2.86 m<sup>2</sup> • PERIMETER: 6.97 m



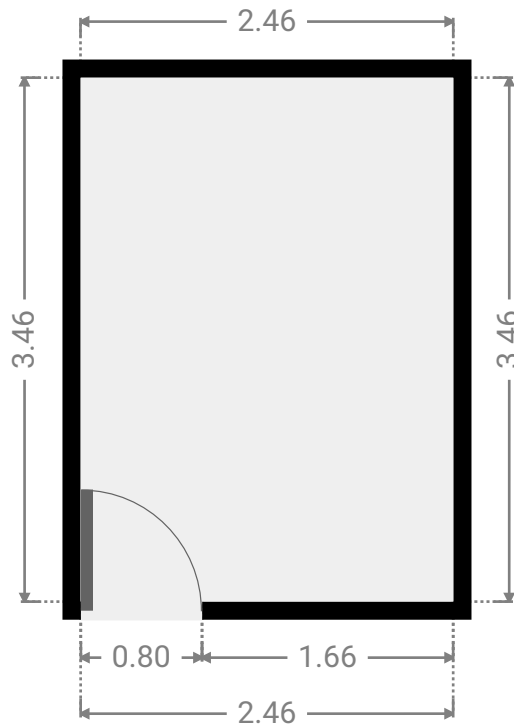
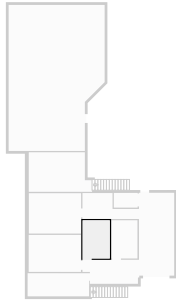
▼ **Bedroom**  
Ground Floor

WIDTH: 4.73 m • LENGTH: 3.35 m  
AREA: 15.85 m<sup>2</sup> • PERIMETER: 16.16 m



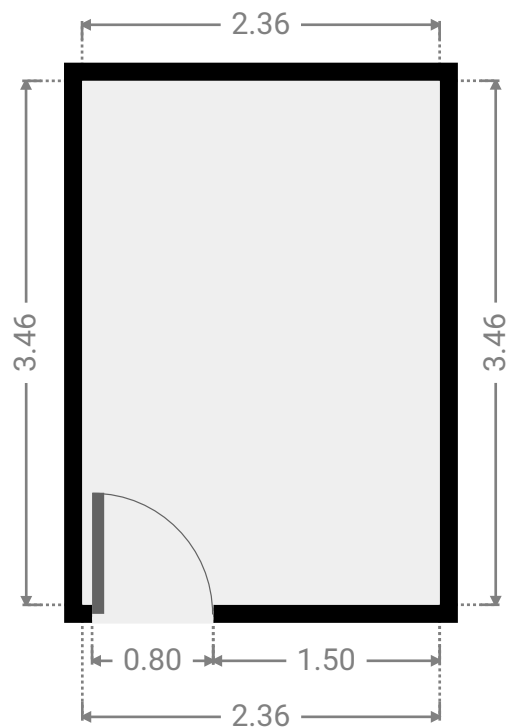
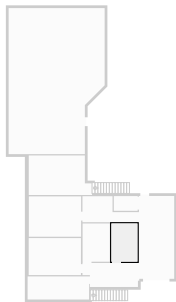
▼ **Bedroom**  
Ground Floor

WIDTH: 2.46 m • LENGTH: 3.46 m  
AREA: 8.51 m<sup>2</sup> • PERIMETER: 11.84 m



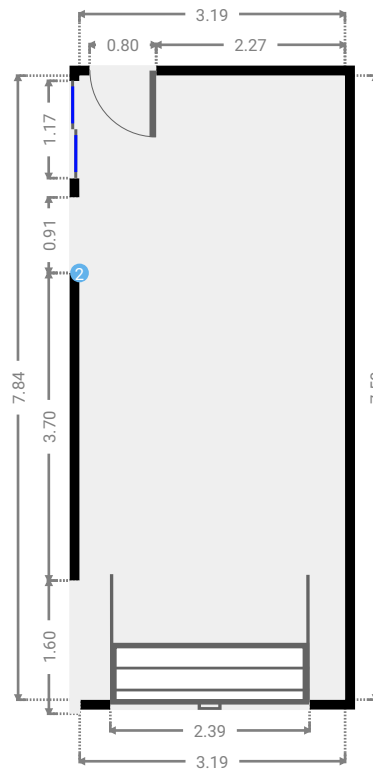
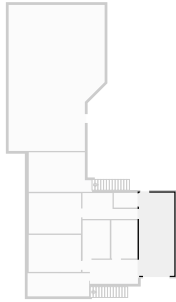
▼ **Bedroom**  
Ground Floor

WIDTH: 2.36 m • LENGTH: 3.46 m  
AREA: 8.17 m<sup>2</sup> • PERIMETER: 11.64 m



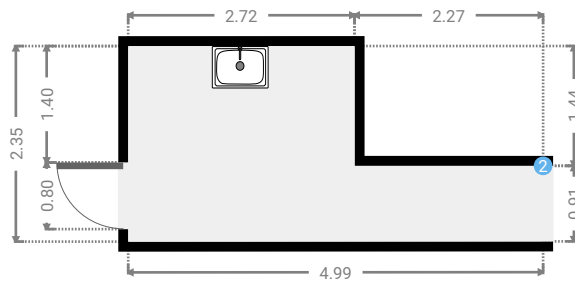
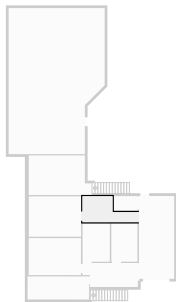
▼ **Garage**  
Ground Floor

WIDTH: 3.19 m • LENGTH: 7.50 m  
AREA: 23.93 m<sup>2</sup> • PERIMETER: 21.38 m



▼ **Laundry Room**  
Ground Floor

WIDTH: 4.99 m • LENGTH: 2.35 m  
AREA: 8.45 m<sup>2</sup> • PERIMETER: 14.67 m



▼ Laundry Room/Ground Floor

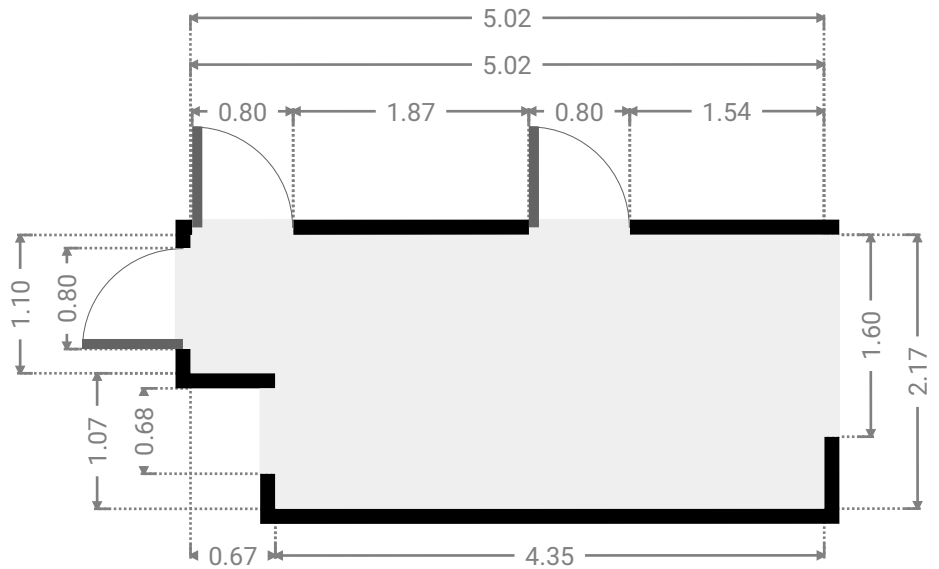
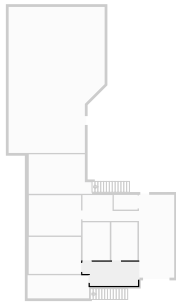
2 OPENING

Height  
0.00 m



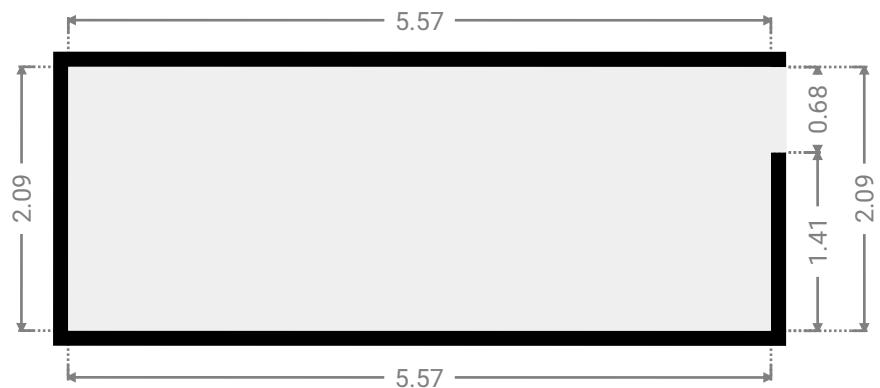
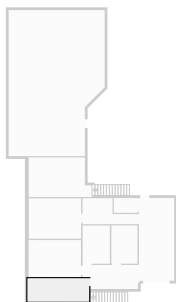
▼ Other  
Ground Floor

WIDTH: 5.02 m • LENGTH: 2.17 m  
AREA: 10.17 m<sup>2</sup> • PERIMETER: 14.38 m



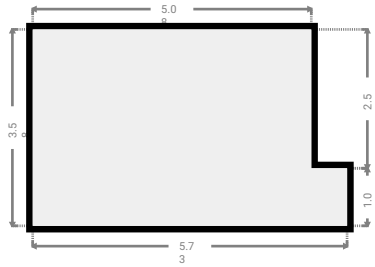
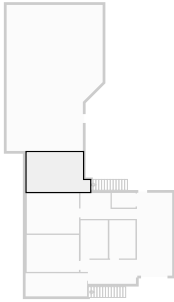
▼ Other  
Ground Floor

WIDTH: 5.57 m • LENGTH: 2.09 m  
AREA: 11.64 m<sup>2</sup> • PERIMETER: 15.32 m



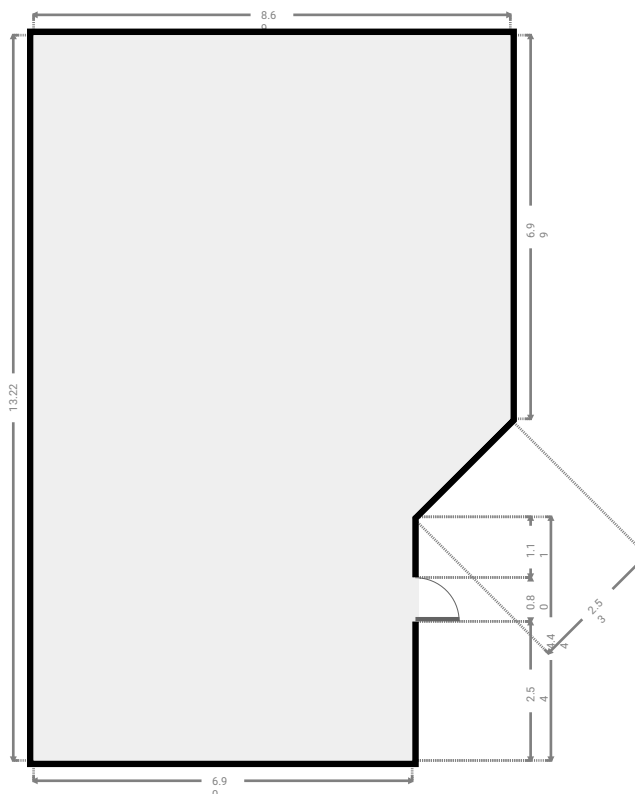
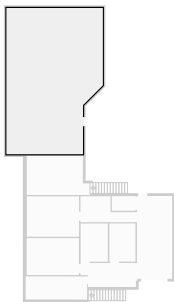
▼ Other  
Ground Floor

WIDTH: 5.73 m • LENGTH: 3.58 m  
AREA: 18.86 m<sup>2</sup> • PERIMETER: 18.62 m



▼ Other  
Ground Floor

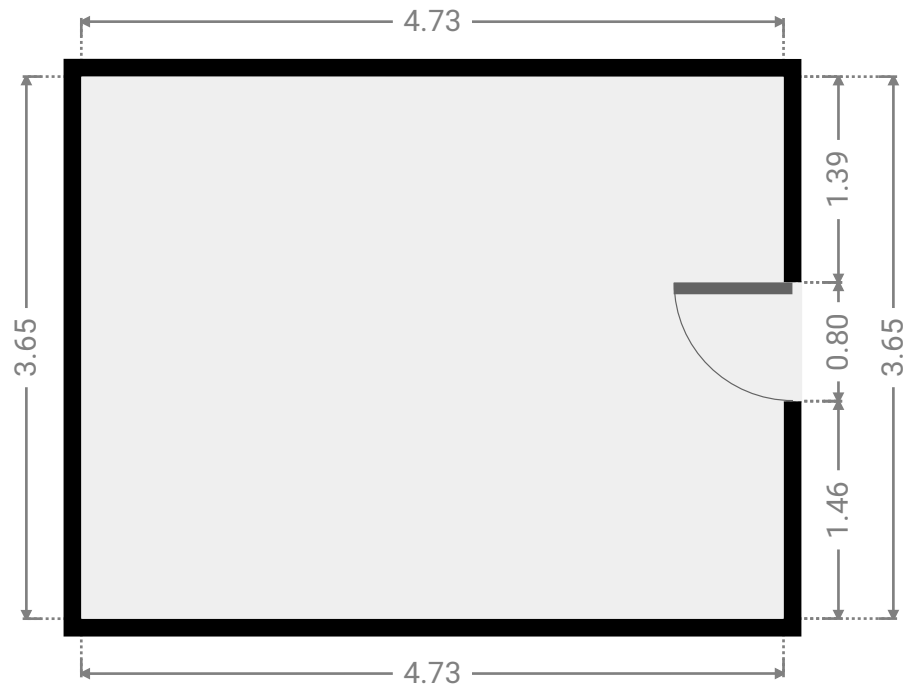
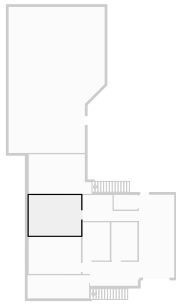
WIDTH: 8.69 m • LENGTH: 13.22 m  
AREA: 105.31 m<sup>2</sup> • PERIMETER: 42.77 m



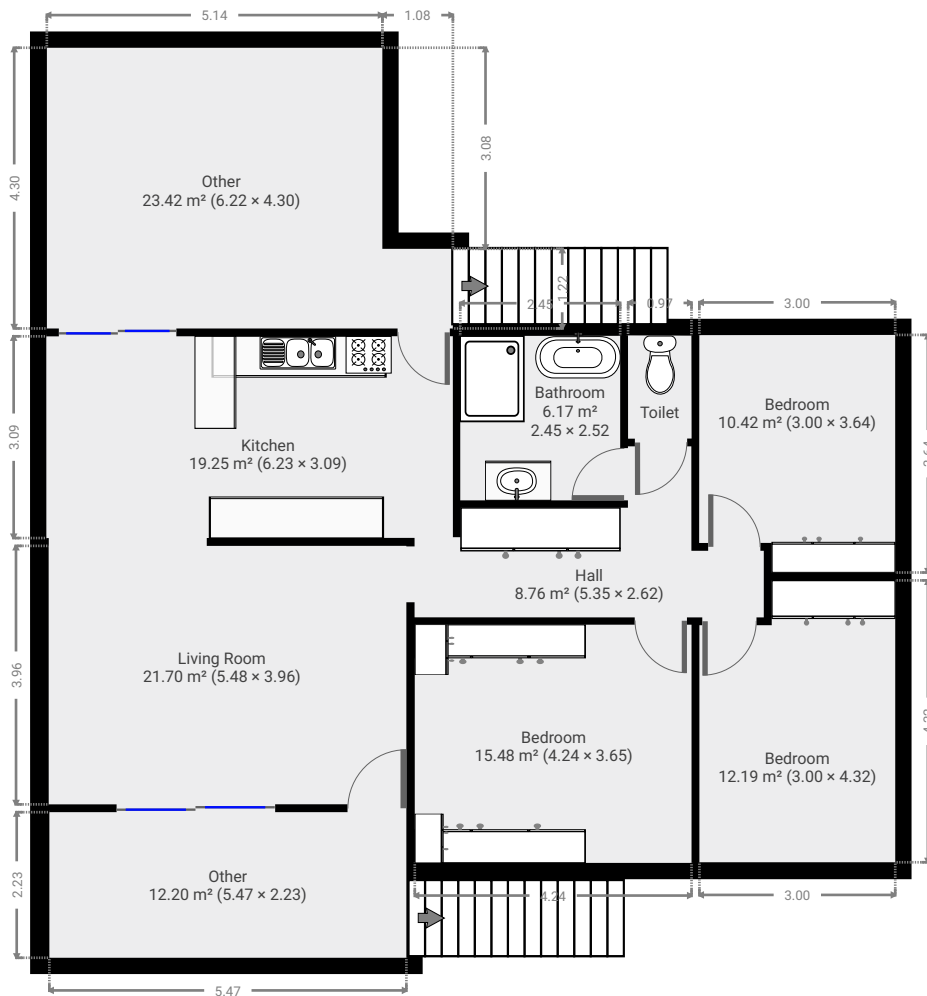


▼ **Primary Bedroom**  
Ground Floor

WIDTH: 4.73 m • LENGTH: 3.65 m  
AREA: 17.27 m<sup>2</sup> • PERIMETER: 16.76 m

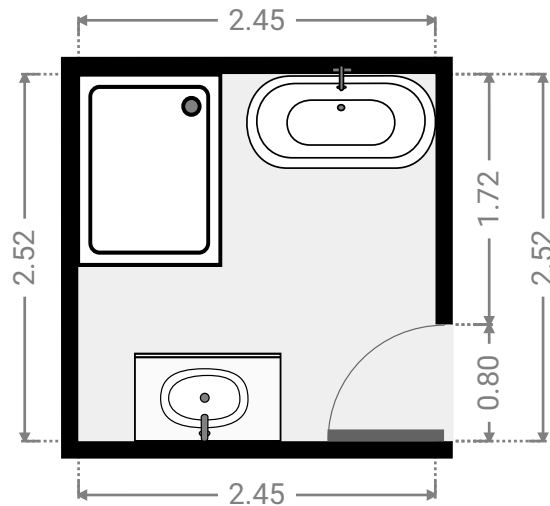
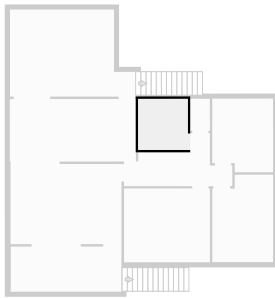


▼ 1st Floor



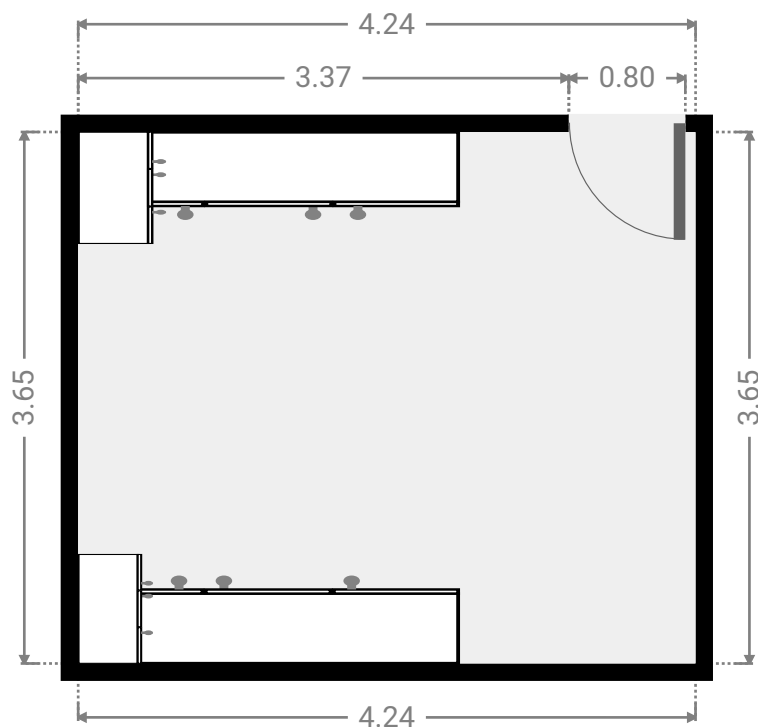
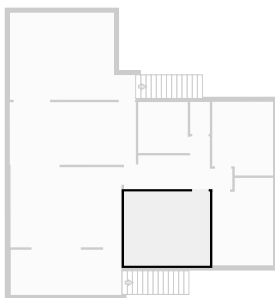
▼ **Bathroom**  
1st Floor

WIDTH: 2.45 m • LENGTH: 2.52 m  
AREA: 6.17 m<sup>2</sup> • PERIMETER: 9.94 m



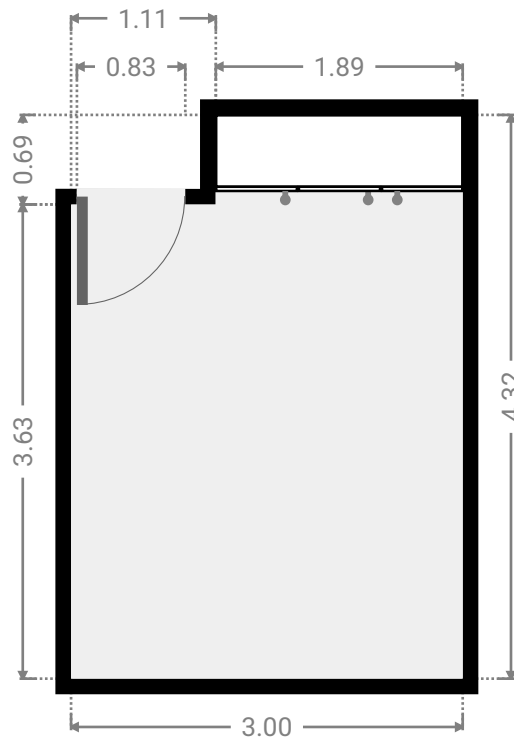
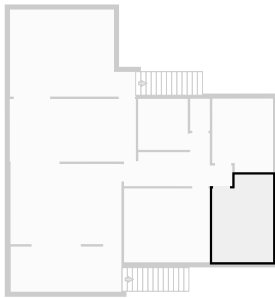
▼ **Bedroom**  
1st Floor

WIDTH: 4.24 m • LENGTH: 3.65 m  
AREA: 15.48 m<sup>2</sup> • PERIMETER: 15.78 m



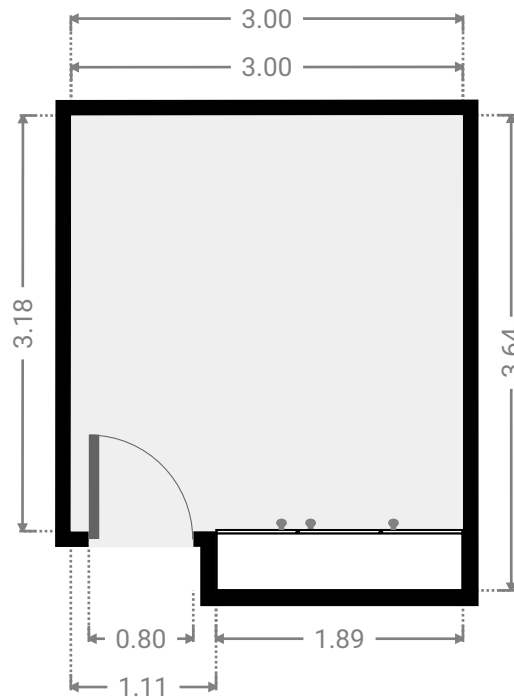
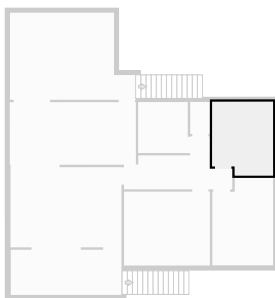
▼ **Bedroom**  
1st Floor

WIDTH: 3.00 m • LENGTH: 4.32 m  
AREA: 12.19 m<sup>2</sup> • PERIMETER: 14.64 m



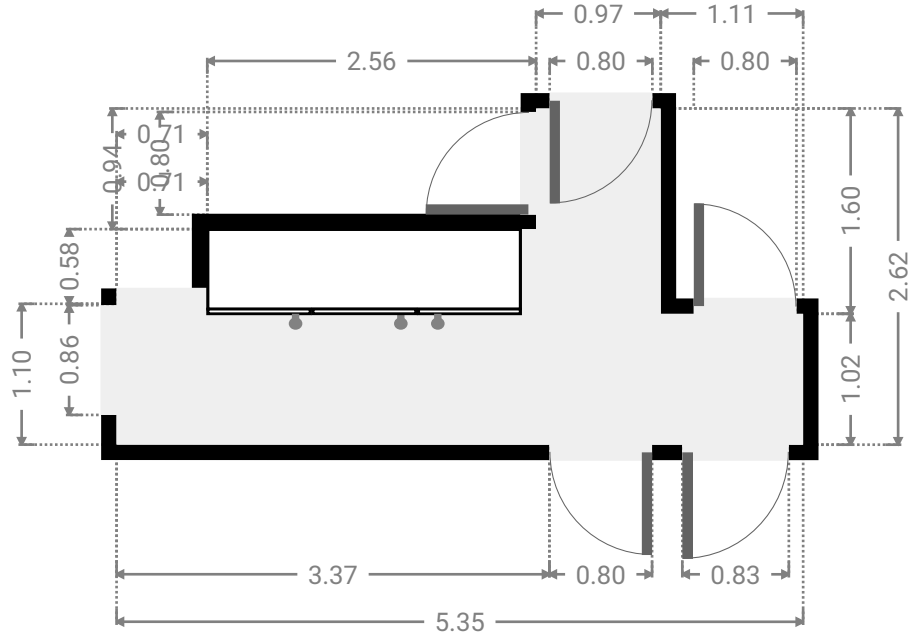
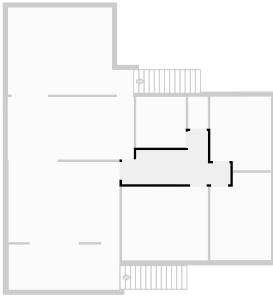
▼ **Bedroom**  
1st Floor

WIDTH: 3.00 m • LENGTH: 3.64 m  
AREA: 10.42 m<sup>2</sup> • PERIMETER: 13.28 m



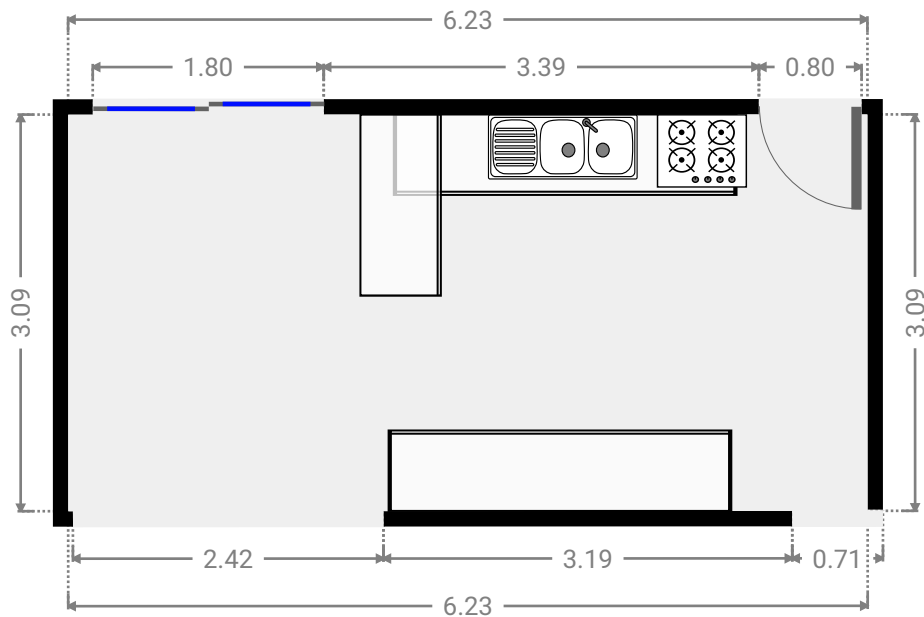
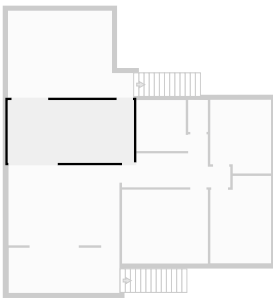
▼ Hall  
1st Floor

WIDTH: 5.35 m • LENGTH: 2.62 m  
AREA: 8.76 m<sup>2</sup> • PERIMETER: 15.94 m



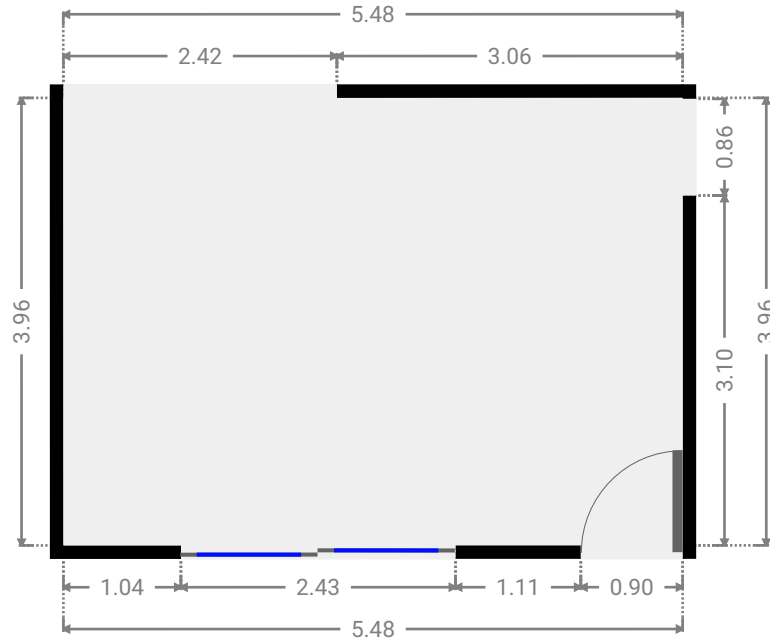
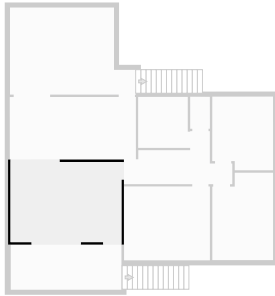
▼ Kitchen  
1st Floor

WIDTH: 6.23 m • LENGTH: 3.09 m  
AREA: 19.25 m<sup>2</sup> • PERIMETER: 18.64 m



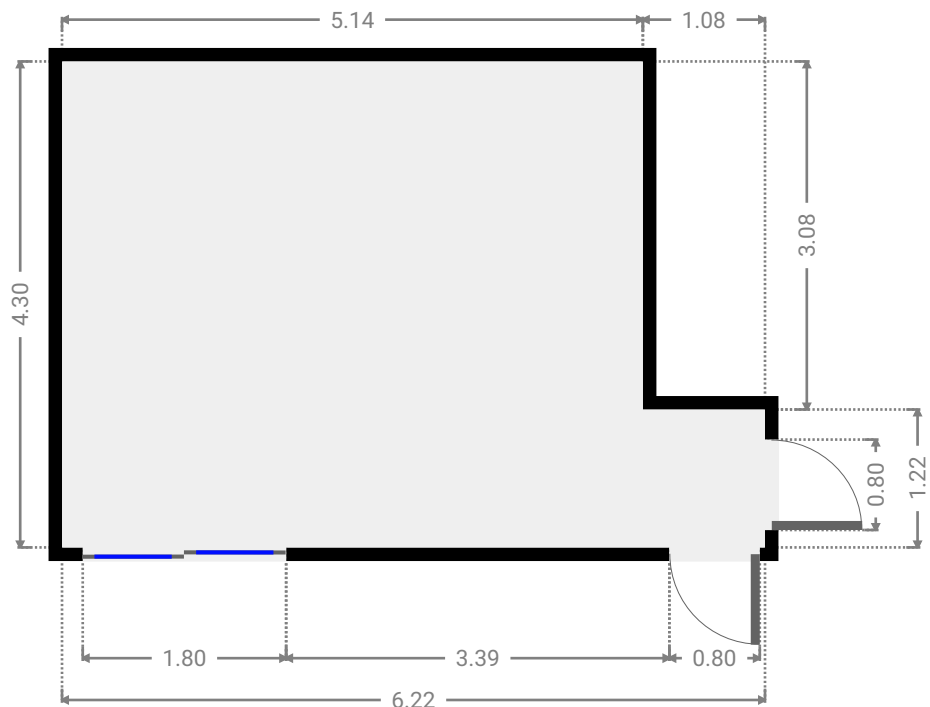
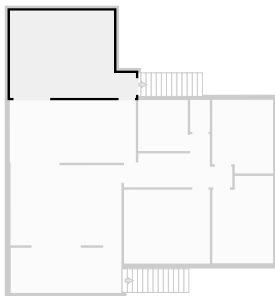
▼ **Living Room**  
1st Floor

WIDTH: 5.48 m • LENGTH: 3.96 m  
AREA: 21.70 m<sup>2</sup> • PERIMETER: 18.88 m



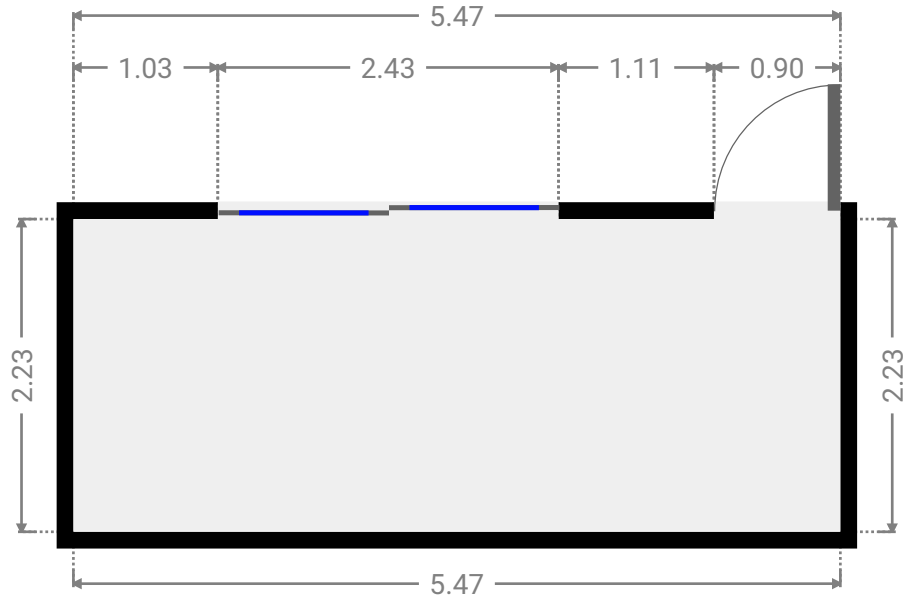
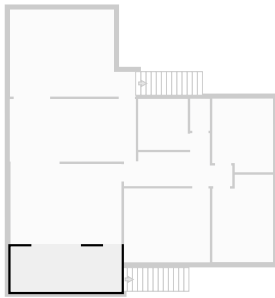
▼ **Other**  
1st Floor

WIDTH: 6.22 m • LENGTH: 4.30 m  
AREA: 23.42 m<sup>2</sup> • PERIMETER: 21.04 m



▼ **Other**  
1st Floor

WIDTH: 5.47 m • LENGTH: 2.23 m  
AREA: 12.20 m<sup>2</sup> • PERIMETER: 15.40 m



▼ **Toilet**  
1st Floor

WIDTH: 0.97 m • LENGTH: 1.58 m  
AREA: 1.53 m<sup>2</sup> • PERIMETER: 5.10 m

