

24 Joeseph Street

SUBMITTED BY

Ray White Rockhampton Casey
stockers@cqoz.com

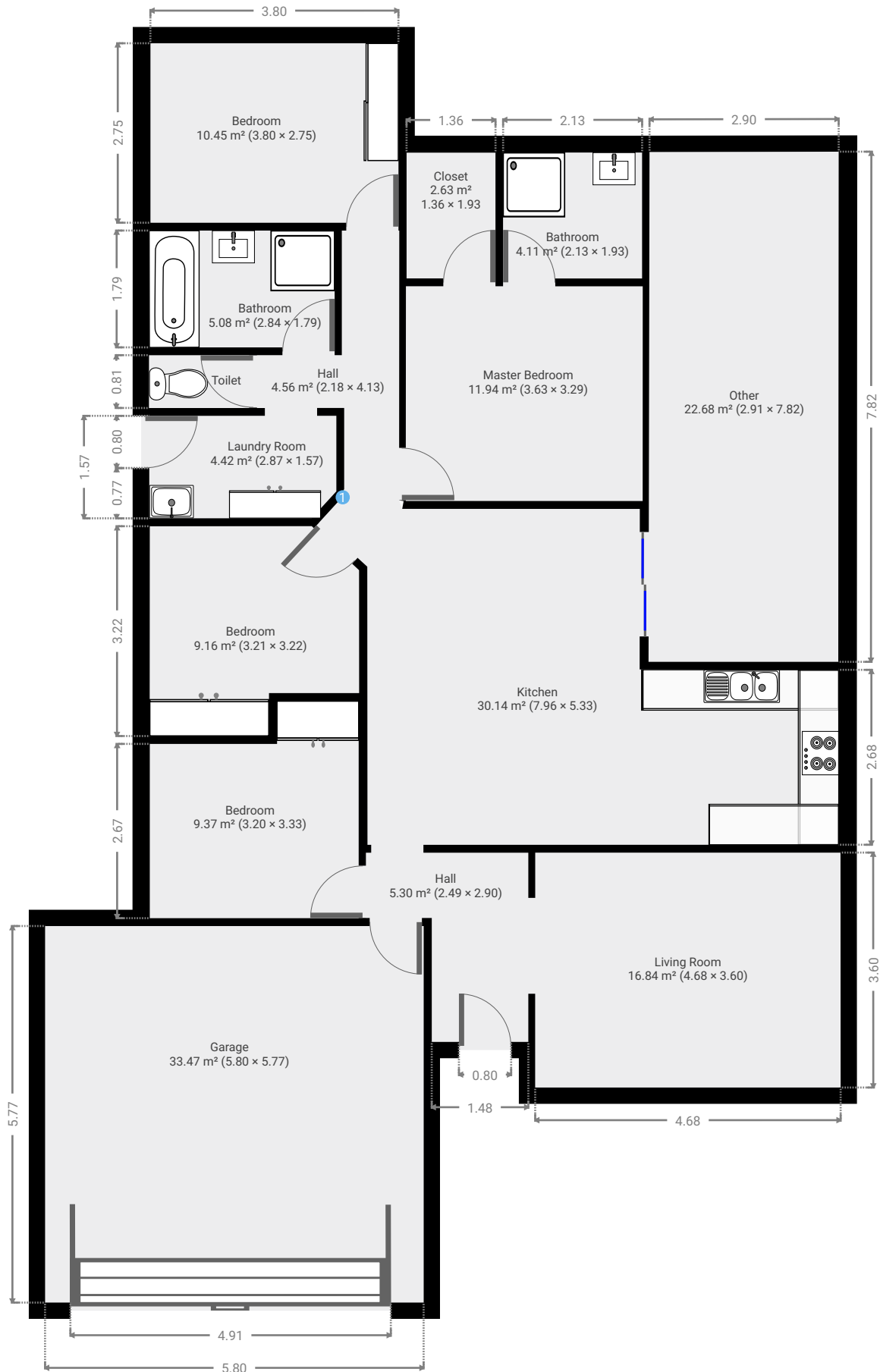
CREATED ON

2021-12-06

Floors

1

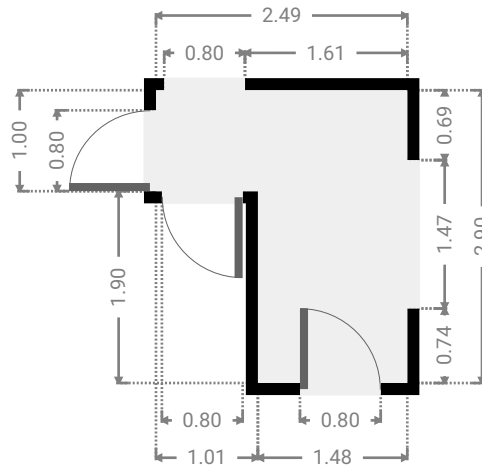
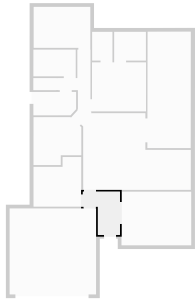
▼ Ground Floor



FLOORS: 1

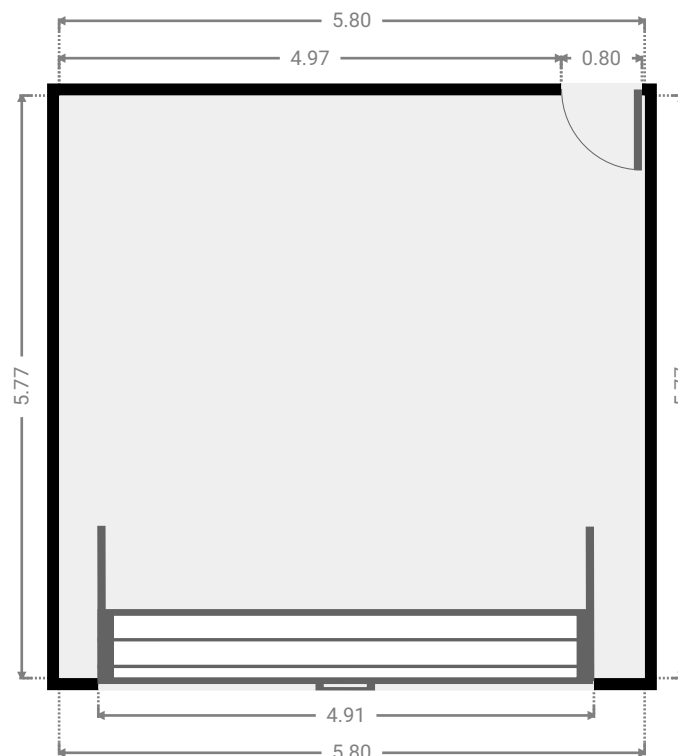
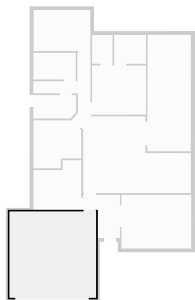
▼ **Hall**
Ground Floor

WIDTH: 2.49 m • LENGTH: 2.90 m
AREA: 5.30 m² • PERIMETER: 10.78 m



▼ **Garage**
Ground Floor

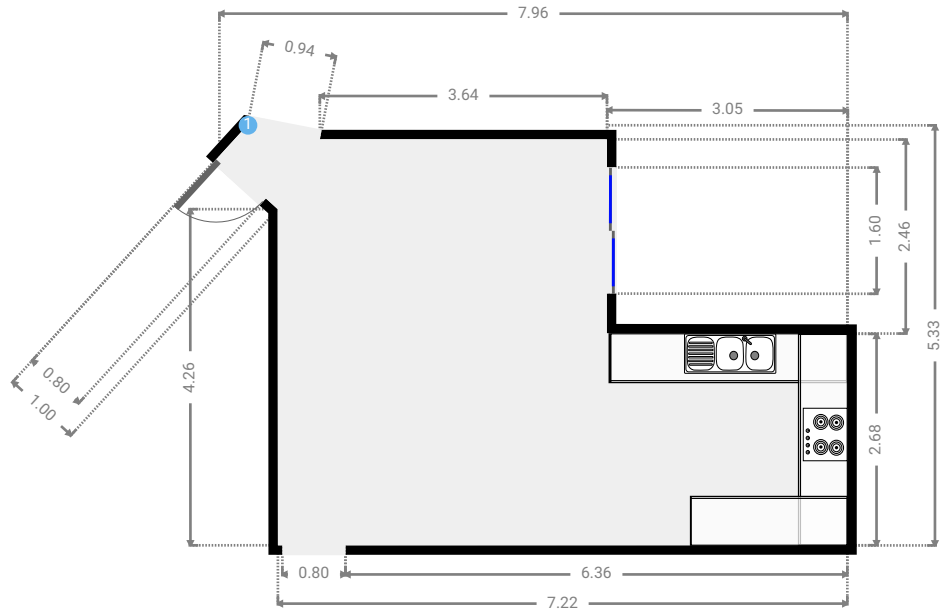
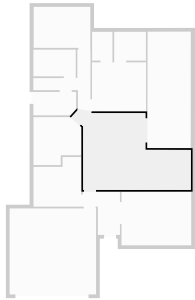
WIDTH: 5.80 m • LENGTH: 5.77 m
AREA: 33.47 m² • PERIMETER: 23.14 m



FLOORS: 1

▼ Kitchen Ground Floor

WIDTH: 7.96 m • LENGTH: 5.33 m
AREA: 30.14 m² • PERIMETER: 25.78 m



▼ Kitchen/Ground Floor

1 OPENING

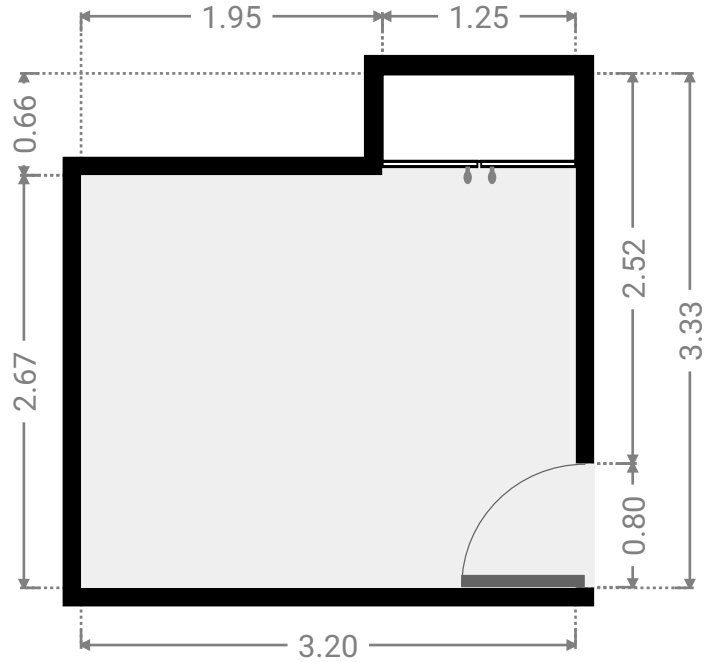
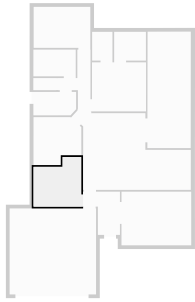
Height
0.00 m



FLOORS: 1

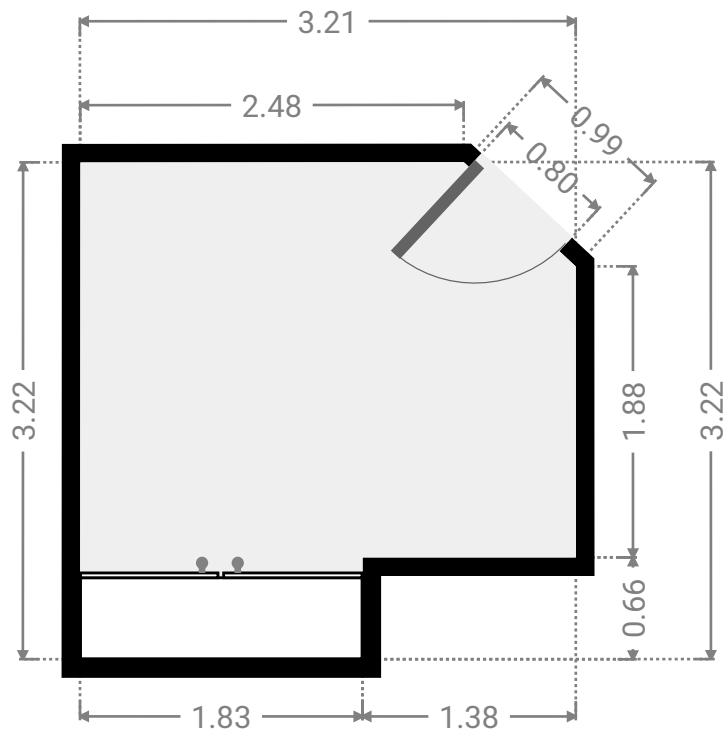
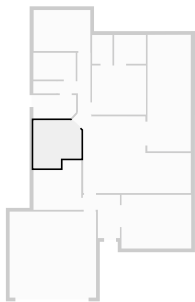
▼ **Bedroom**
Ground Floor

WIDTH: 3.20 m • LENGTH: 3.33 m
AREA: 9.37 m² • PERIMETER: 13.06 m



▼ **Bedroom**
Ground Floor

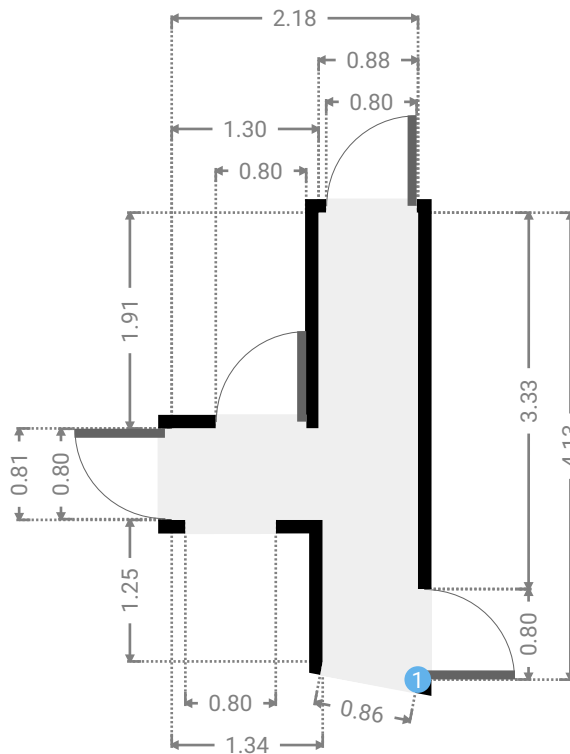
WIDTH: 3.21 m • LENGTH: 3.22 m
AREA: 9.16 m² • PERIMETER: 12.44 m



FLOORS: 1

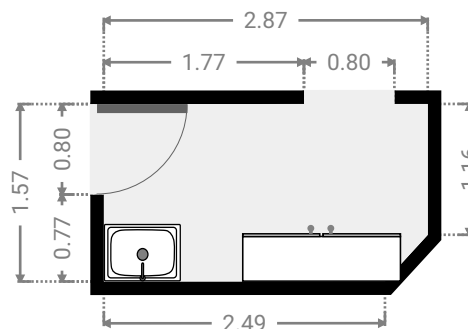
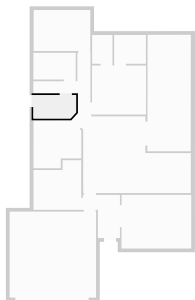
▼ **Hall**
Ground Floor

WIDTH: 2.18 m • LENGTH: 4.13 m
AREA: 4.56 m² • PERIMETER: 12.48 m



▼ **Laundry Room**
Ground Floor

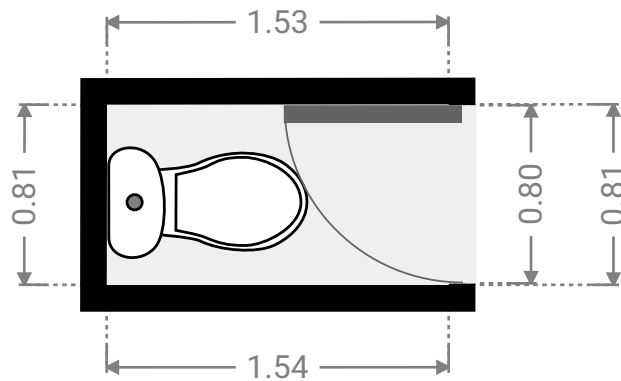
WIDTH: 2.87 m • LENGTH: 1.57 m
AREA: 4.42 m² • PERIMETER: 8.64 m



FLOORS: 1

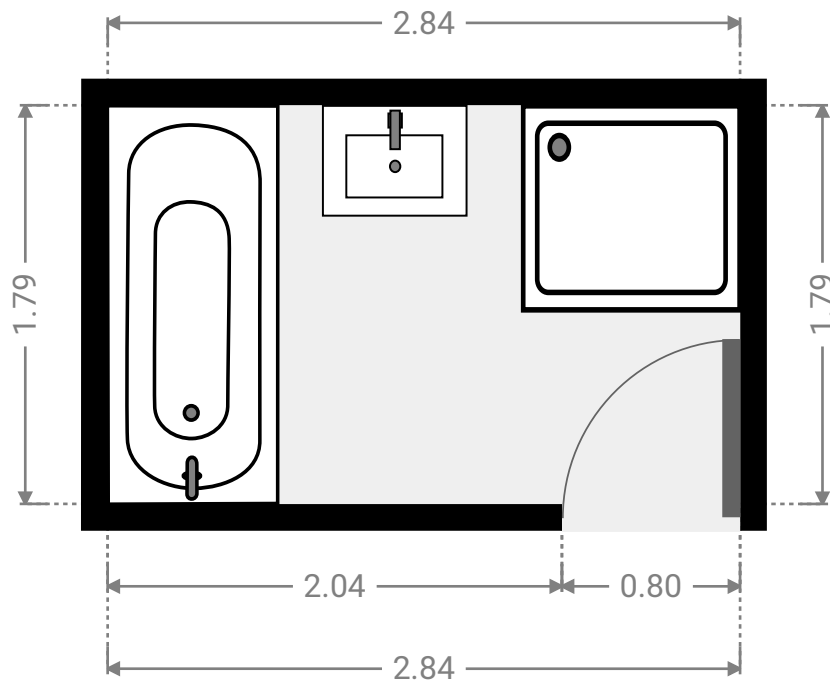
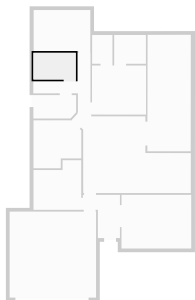
▼ Toilet
Ground Floor

WIDTH: 1.54 m • LENGTH: 0.81 m
AREA: 1.24 m² • PERIMETER: 4.69 m



▼ Bathroom
Ground Floor

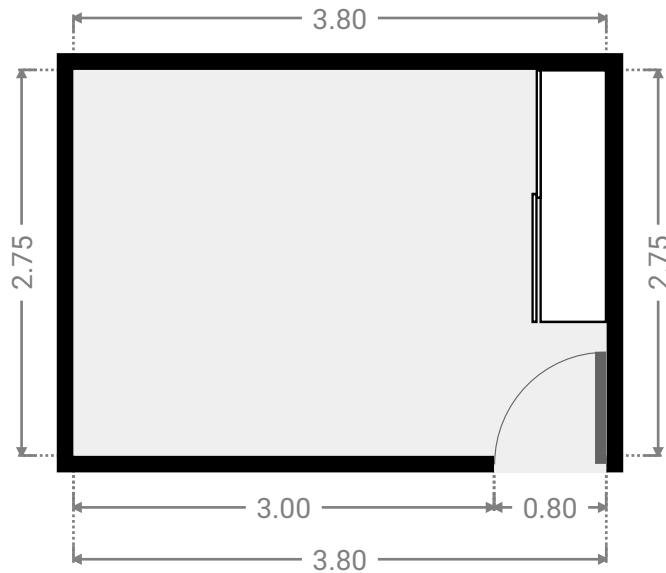
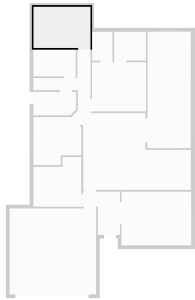
WIDTH: 2.84 m • LENGTH: 1.79 m
AREA: 5.08 m² • PERIMETER: 9.26 m



FLOORS: 1

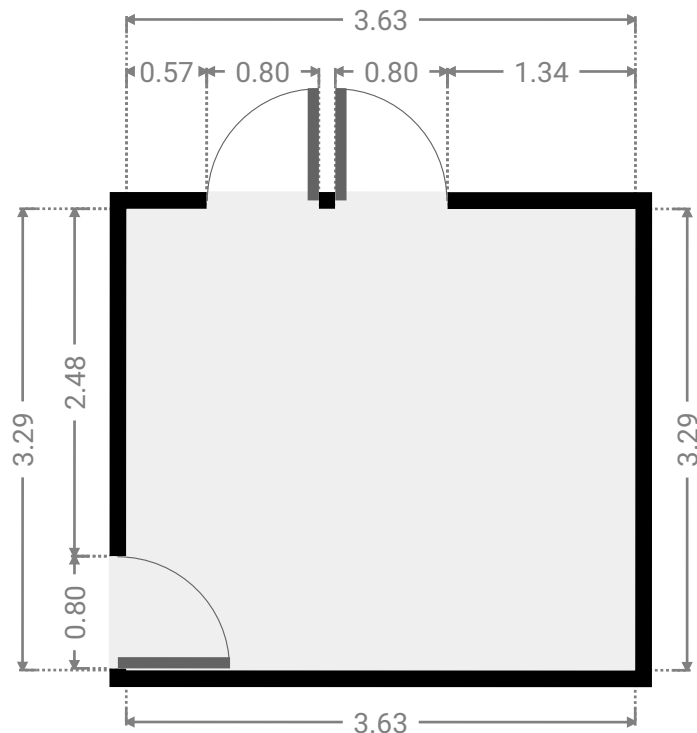
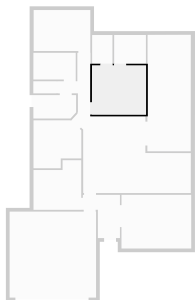
▼ **Bedroom**
Ground Floor

WIDTH: 3.80 m • LENGTH: 2.75 m
AREA: 10.45 m² • PERIMETER: 13.10 m



▼ **Master Bedroom**
Ground Floor

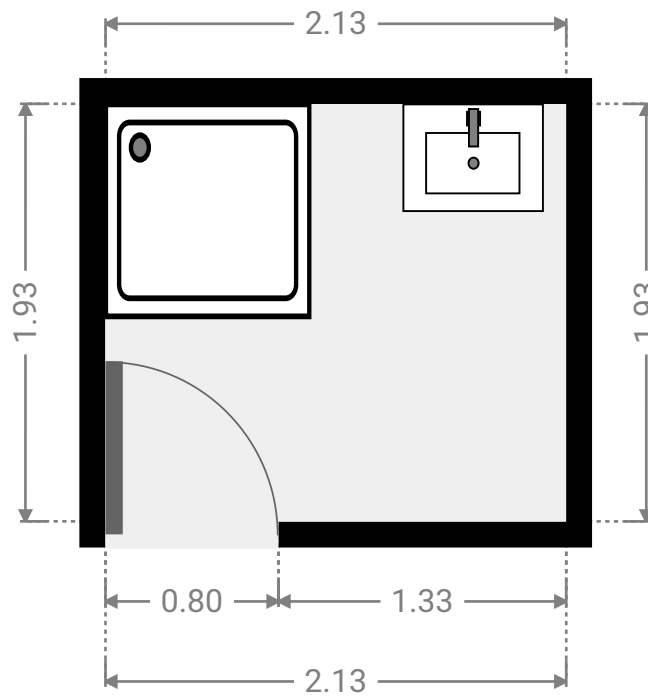
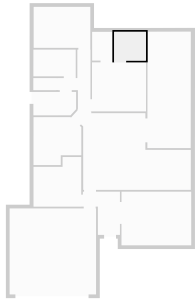
WIDTH: 3.63 m • LENGTH: 3.29 m
AREA: 11.94 m² • PERIMETER: 13.84 m



FLOORS: 1

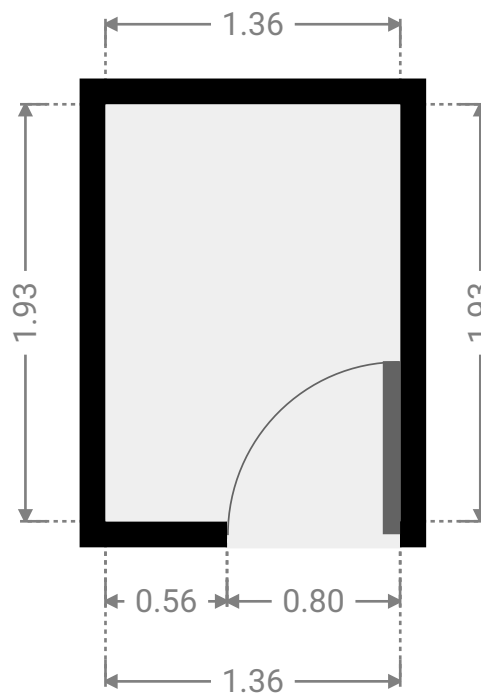
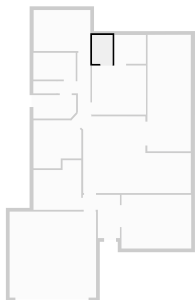
▼ **Bathroom**
Ground Floor

WIDTH: 2.13 m • LENGTH: 1.93 m
AREA: 4.11 m² • PERIMETER: 8.12 m



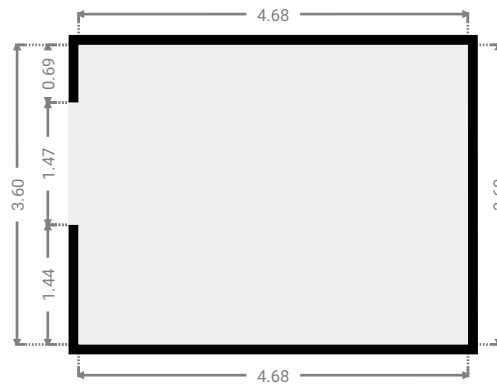
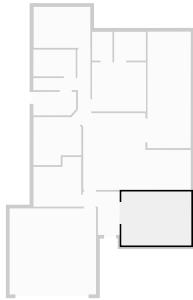
▼ **Closet**
Ground Floor

WIDTH: 1.36 m • LENGTH: 1.93 m
AREA: 2.63 m² • PERIMETER: 6.58 m



▼ Living Room Ground Floor

WIDTH: 4.68 m • LENGTH: 3.60 m
AREA: 16.84 m² • PERIMETER: 16.56 m



▼ Other Ground Floor

WIDTH: 2.91 m • LENGTH: 7.82 m
AREA: 22.68 m² • PERIMETER: 21.43 m

