

# 24 Cambridge Street

**SUBMITTED BY**

Ray White Rockhampton Casey  
stockers@cqoz.com

---

**CREATED ON**

2022-06-13

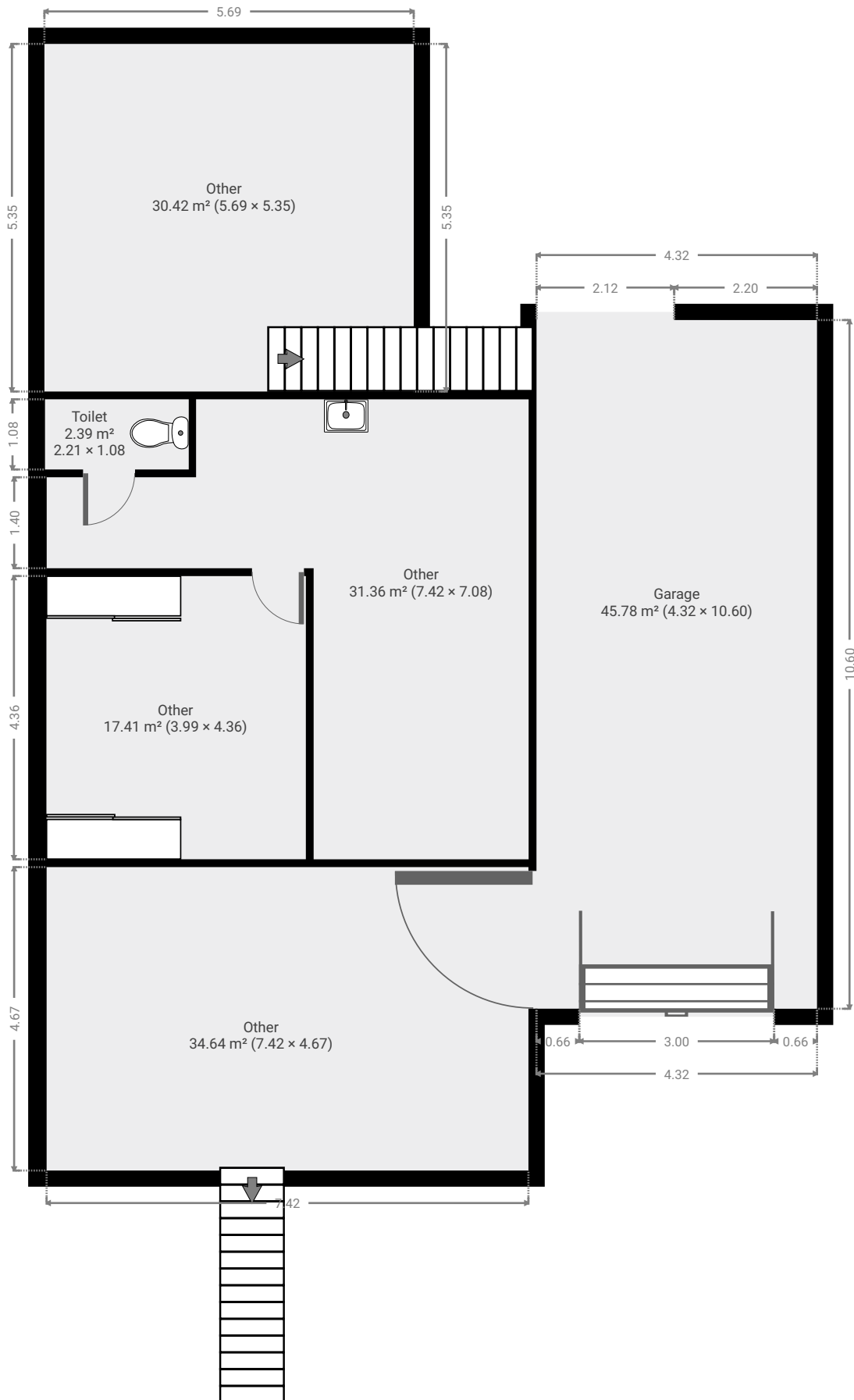
---

**Floors**

2

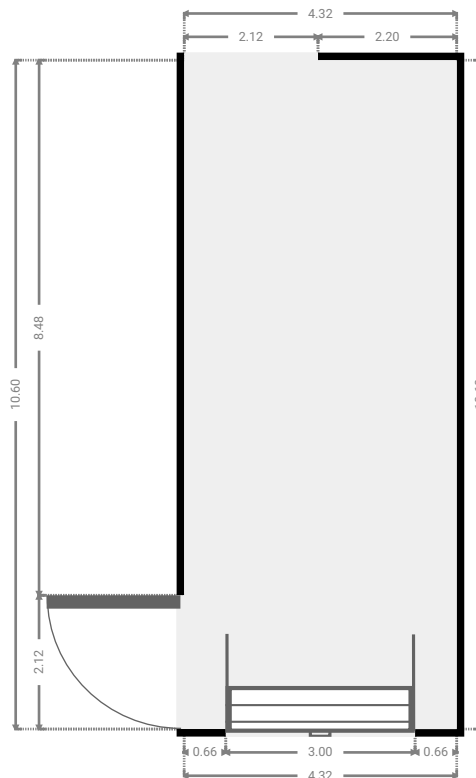
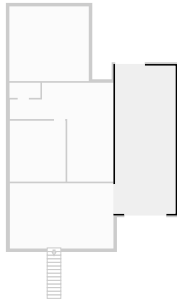
---

▼ Ground Floor



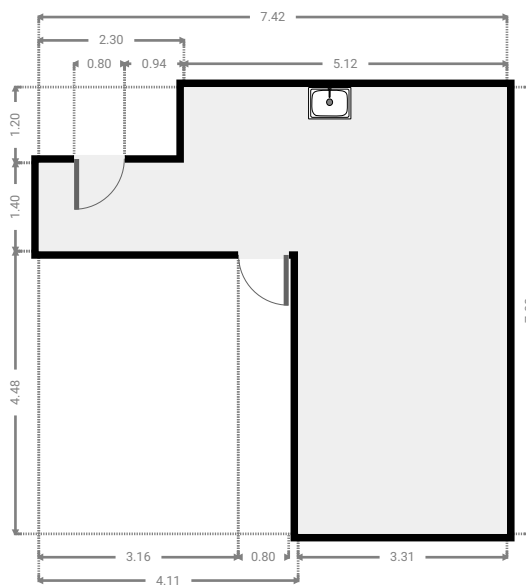
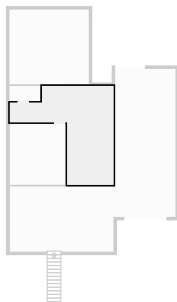
## ▼ Garage Ground Floor

WIDTH: 4.32 m • LENGTH: 10.60 m  
AREA: 45.78 m<sup>2</sup> • PERIMETER: 29.84 m



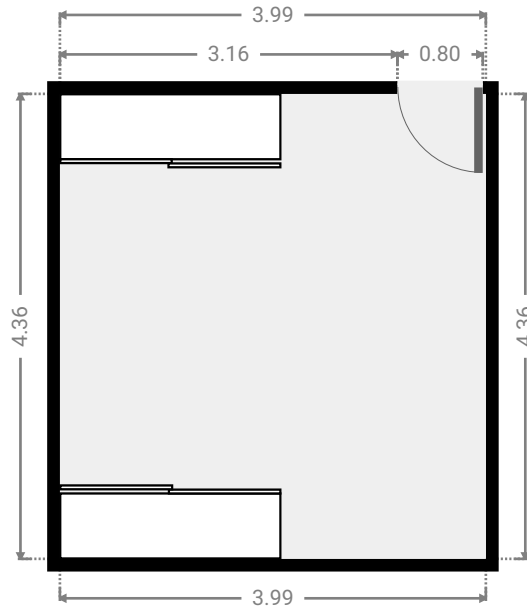
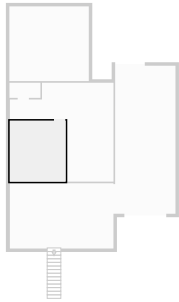
## ▼ Other Ground Floor

WIDTH: 7.42 m • LENGTH: 7.08 m  
AREA: 31.36 m<sup>2</sup> • PERIMETER: 29.00 m



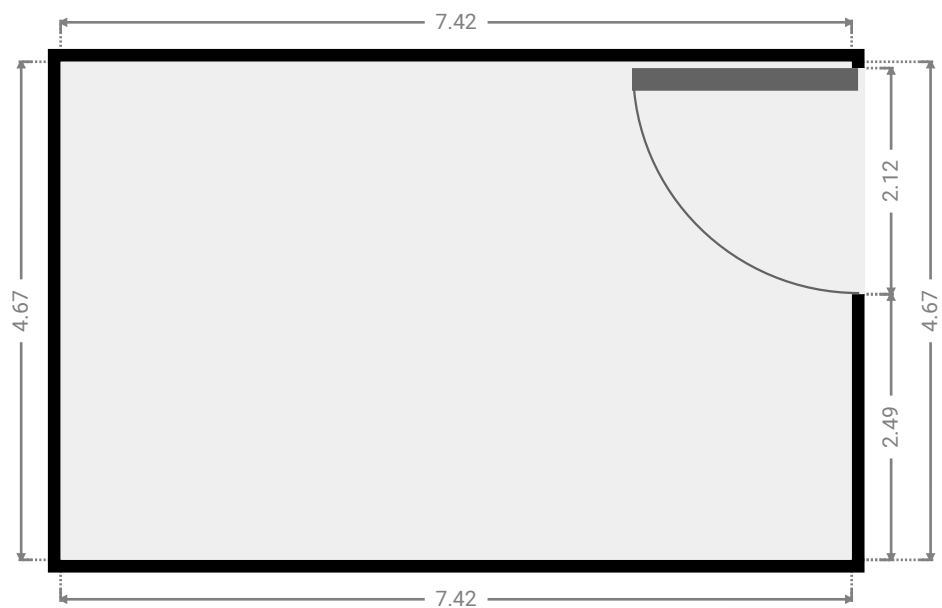
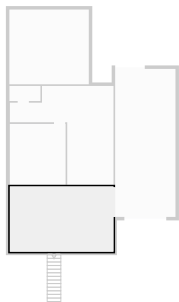
## ▼ Other Ground Floor

WIDTH: 3.99 m • LENGTH: 4.36 m  
AREA: 17.41 m<sup>2</sup> • PERIMETER: 16.71 m



## ▼ Other Ground Floor

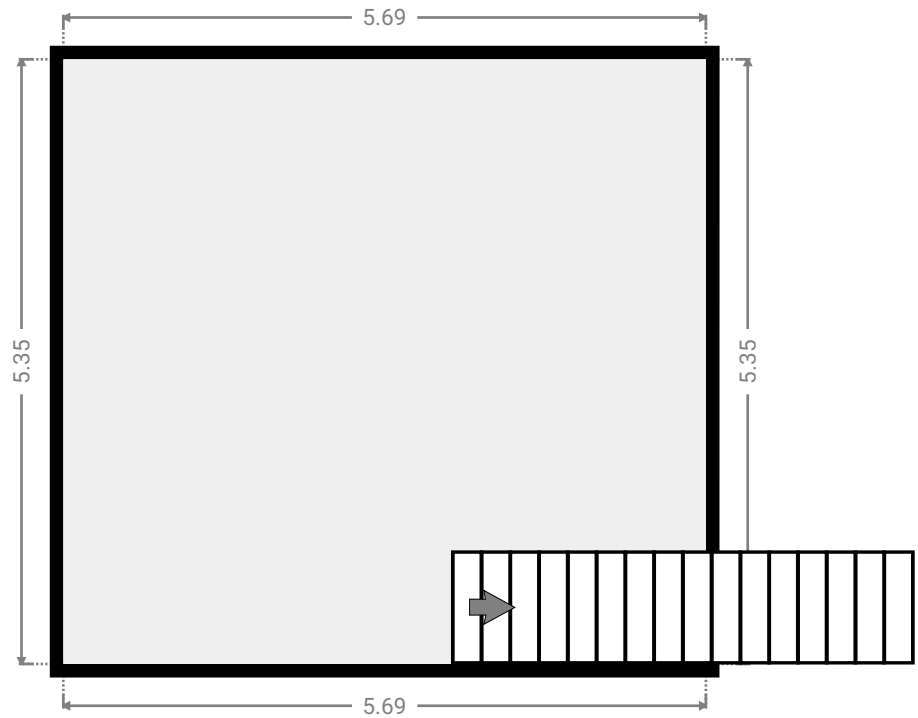
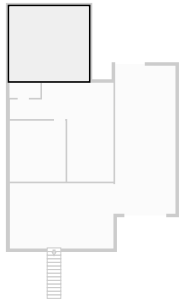
WIDTH: 7.42 m • LENGTH: 4.67 m  
AREA: 34.64 m<sup>2</sup> • PERIMETER: 24.18 m



FLOORS: 2

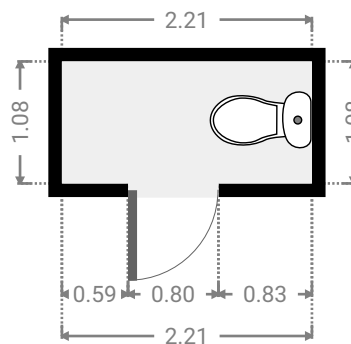
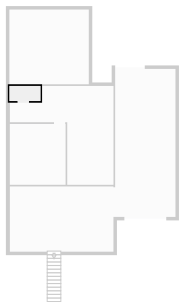
▼ Other  
Ground Floor

WIDTH: 5.69 m • LENGTH: 5.35 m  
AREA: 30.42 m<sup>2</sup> • PERIMETER: 22.07 m

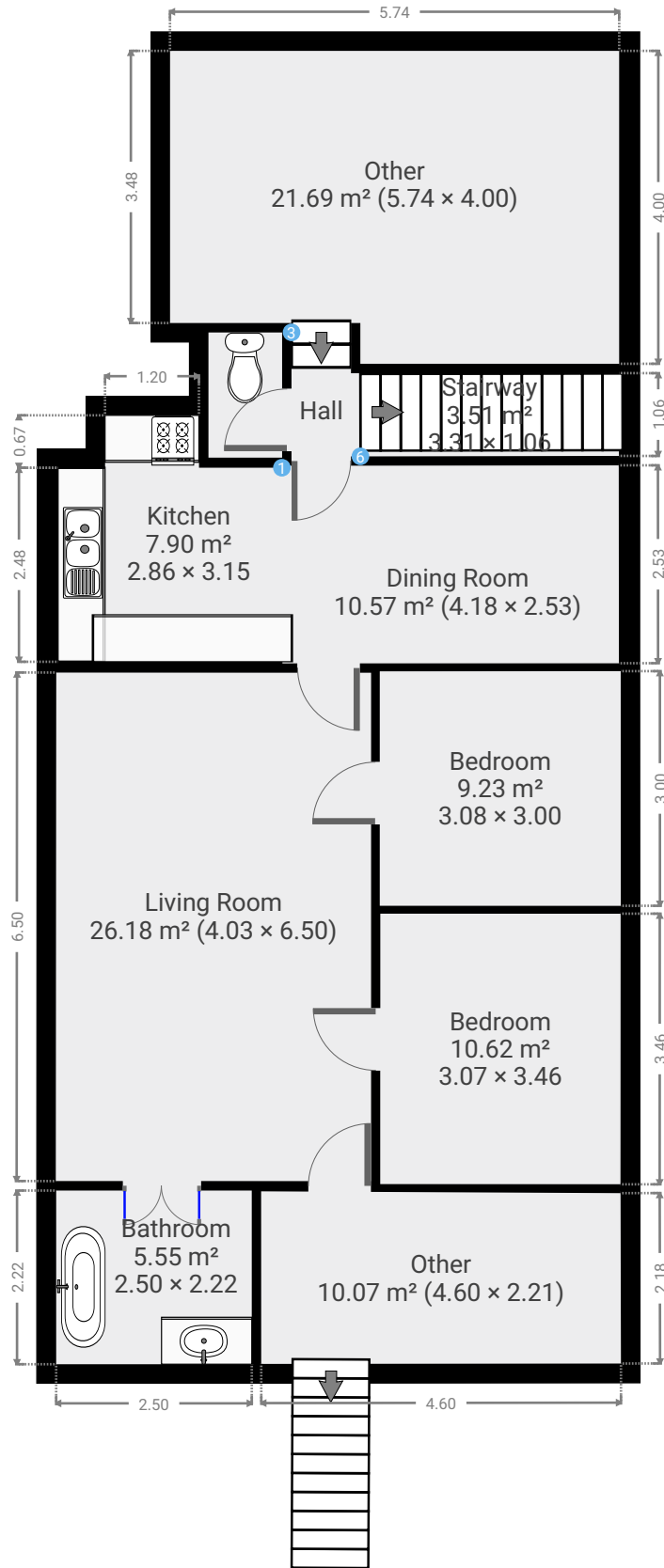


▼ Toilet  
Ground Floor

WIDTH: 2.21 m • LENGTH: 1.08 m  
AREA: 2.39 m<sup>2</sup> • PERIMETER: 6.58 m

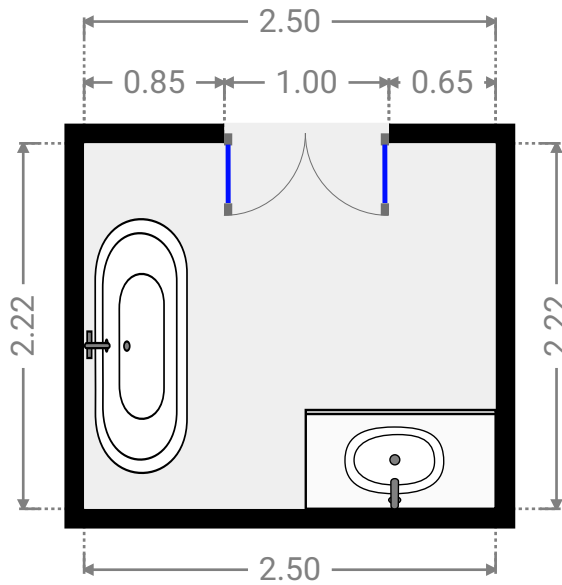
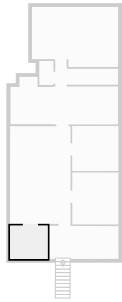


▼ 1st Floor



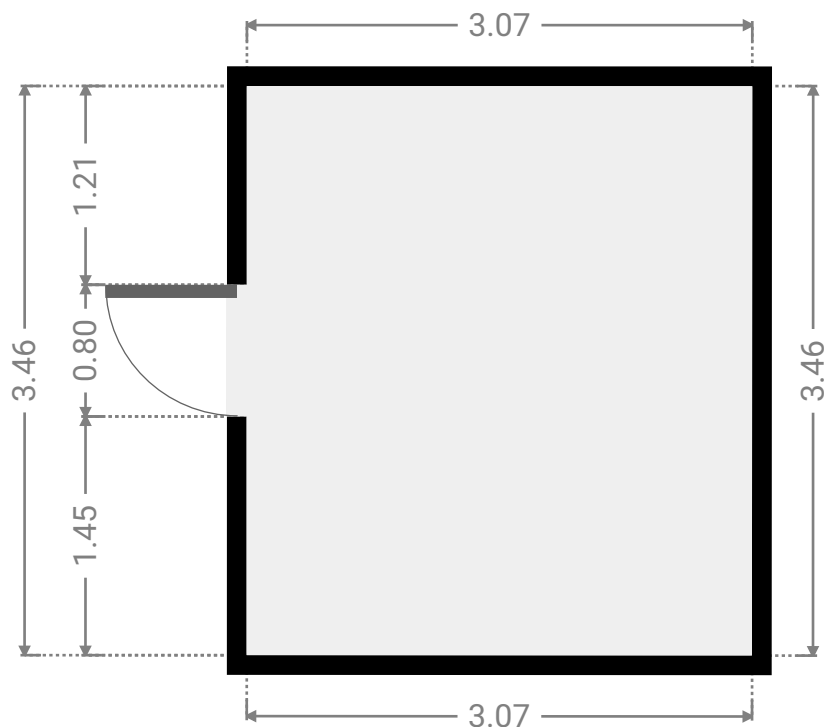
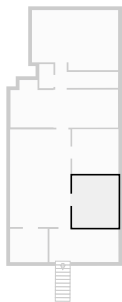
▼ **Bathroom**  
1st Floor

WIDTH: 2.50 m • LENGTH: 2.22 m  
AREA: 5.55 m<sup>2</sup> • PERIMETER: 9.44 m



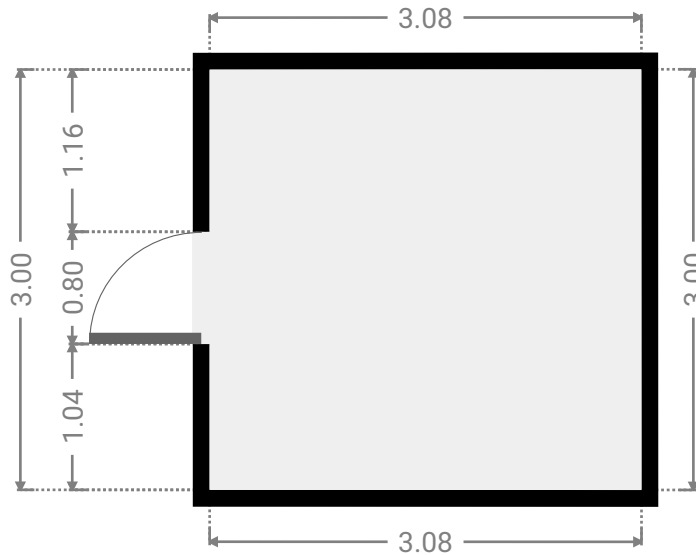
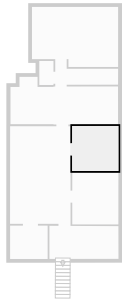
▼ **Bedroom**  
1st Floor

WIDTH: 3.07 m • LENGTH: 3.46 m  
AREA: 10.62 m<sup>2</sup> • PERIMETER: 13.06 m



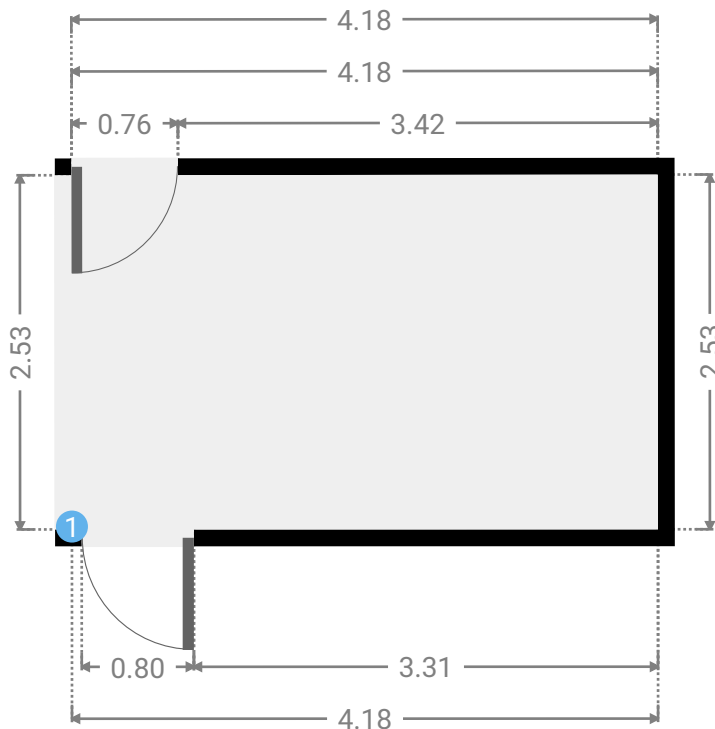
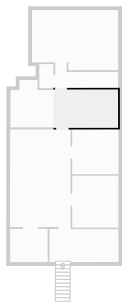
▼ **Bedroom**  
1st Floor

WIDTH: 3.08 m • LENGTH: 3.00 m  
AREA: 9.23 m<sup>2</sup> • PERIMETER: 12.16 m



▼ **Dining Room**  
1st Floor

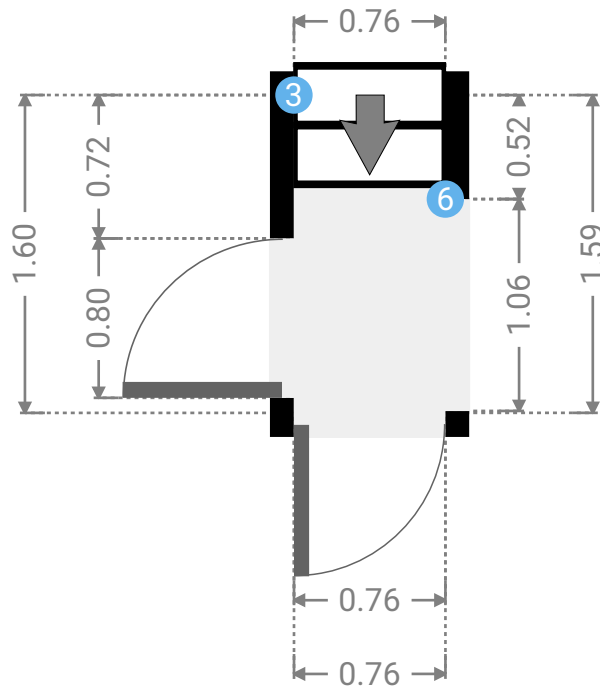
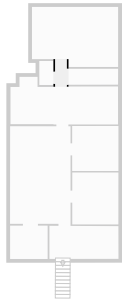
WIDTH: 4.18 m • LENGTH: 2.53 m  
AREA: 10.57 m<sup>2</sup> • PERIMETER: 13.42 m





## ▼ Hall 1st Floor

WIDTH: 0.76 m • LENGTH: 1.60 m  
AREA: 1.21 m<sup>2</sup> • PERIMETER: 4.71 m



## ▼ Hall/1st Floor

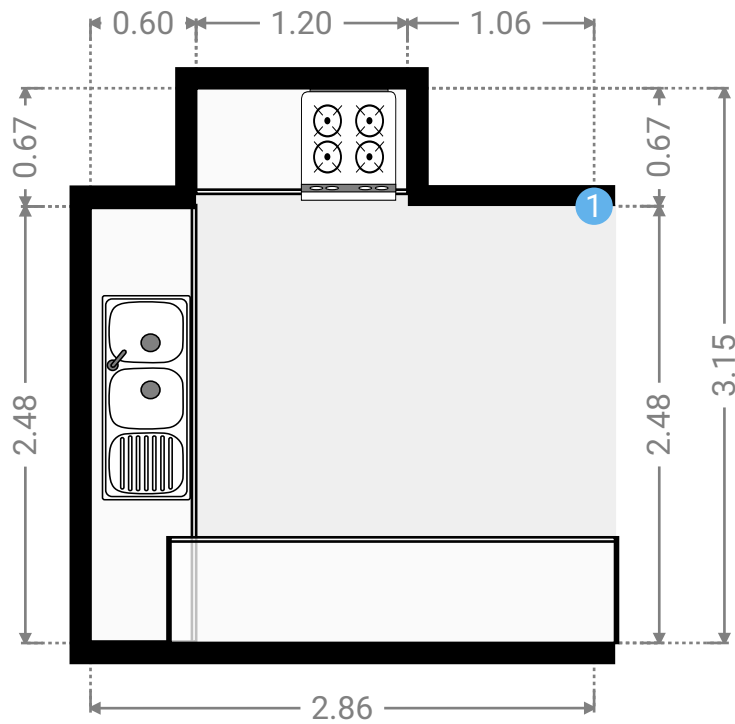
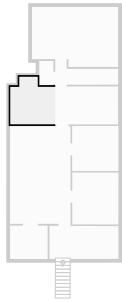
### 3 OPENING

Height  
0.00 m



▼ **Kitchen**  
1st Floor

WIDTH: 2.86 m • LENGTH: 3.15 m  
AREA: 7.90 m<sup>2</sup> • PERIMETER: 12.02 m



▼ **Kitchen/1st Floor**

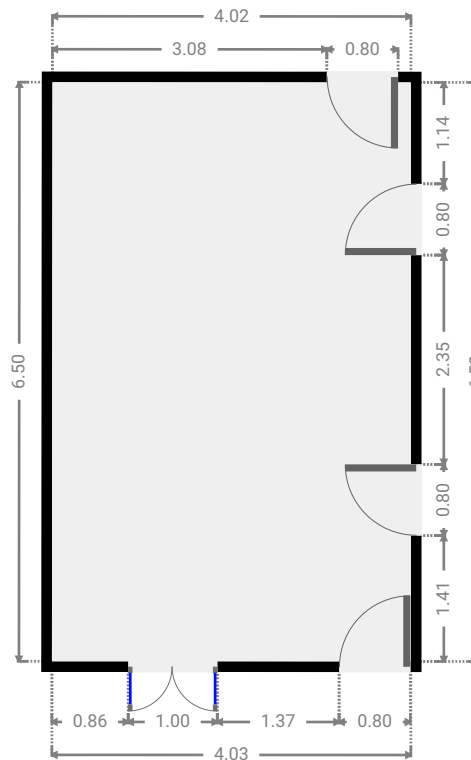
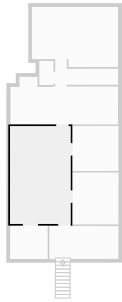
**1** OPENING

Height  
0.00 m



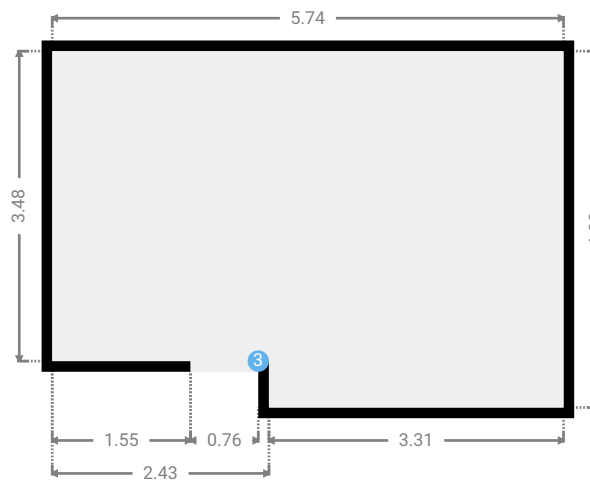
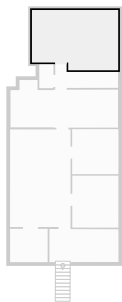
▼ Living Room  
1st Floor

WIDTH: 4.03 m • LENGTH: 6.50 m  
AREA: 26.18 m<sup>2</sup> • PERIMETER: 21.06 m



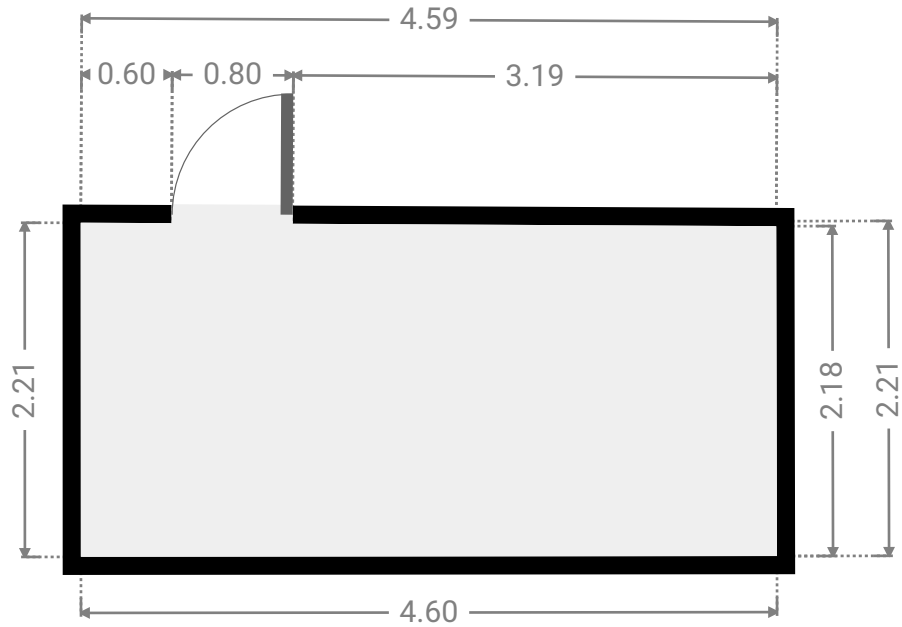
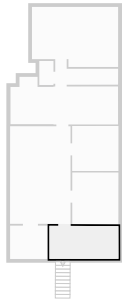
▼ Other  
1st Floor

WIDTH: 5.74 m • LENGTH: 4.00 m  
AREA: 21.69 m<sup>2</sup> • PERIMETER: 19.48 m



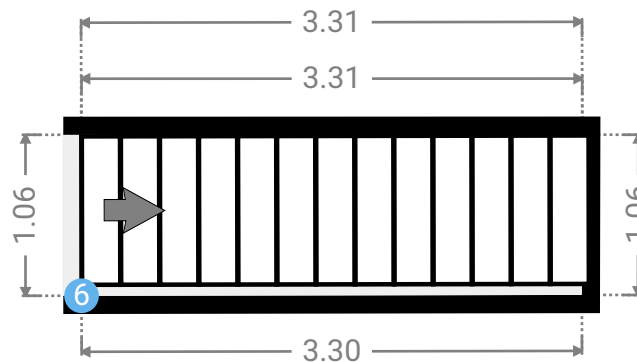
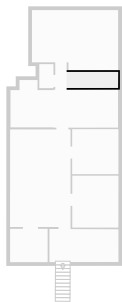
▼ Other  
1st Floor

WIDTH: 4.60 m • LENGTH: 2.21 m  
AREA: 10.07 m<sup>2</sup> • PERIMETER: 13.57 m



▼ Stairway  
1st Floor

WIDTH: 3.31 m • LENGTH: 1.06 m  
AREA: 3.51 m<sup>2</sup> • PERIMETER: 8.73 m



▼ Stairway/1st Floor

6 OPENING

Height  
0.00 m



▼ **Vestibule**  
1st Floor

WIDTH: 0.94 m • LENGTH: 1.60 m  
AREA: 1.51 m<sup>2</sup> • PERIMETER: 5.08 m

