

235 William Street

SUBMITTED BY

Ray White Rockhampton Casey
stockers@cqoz.com

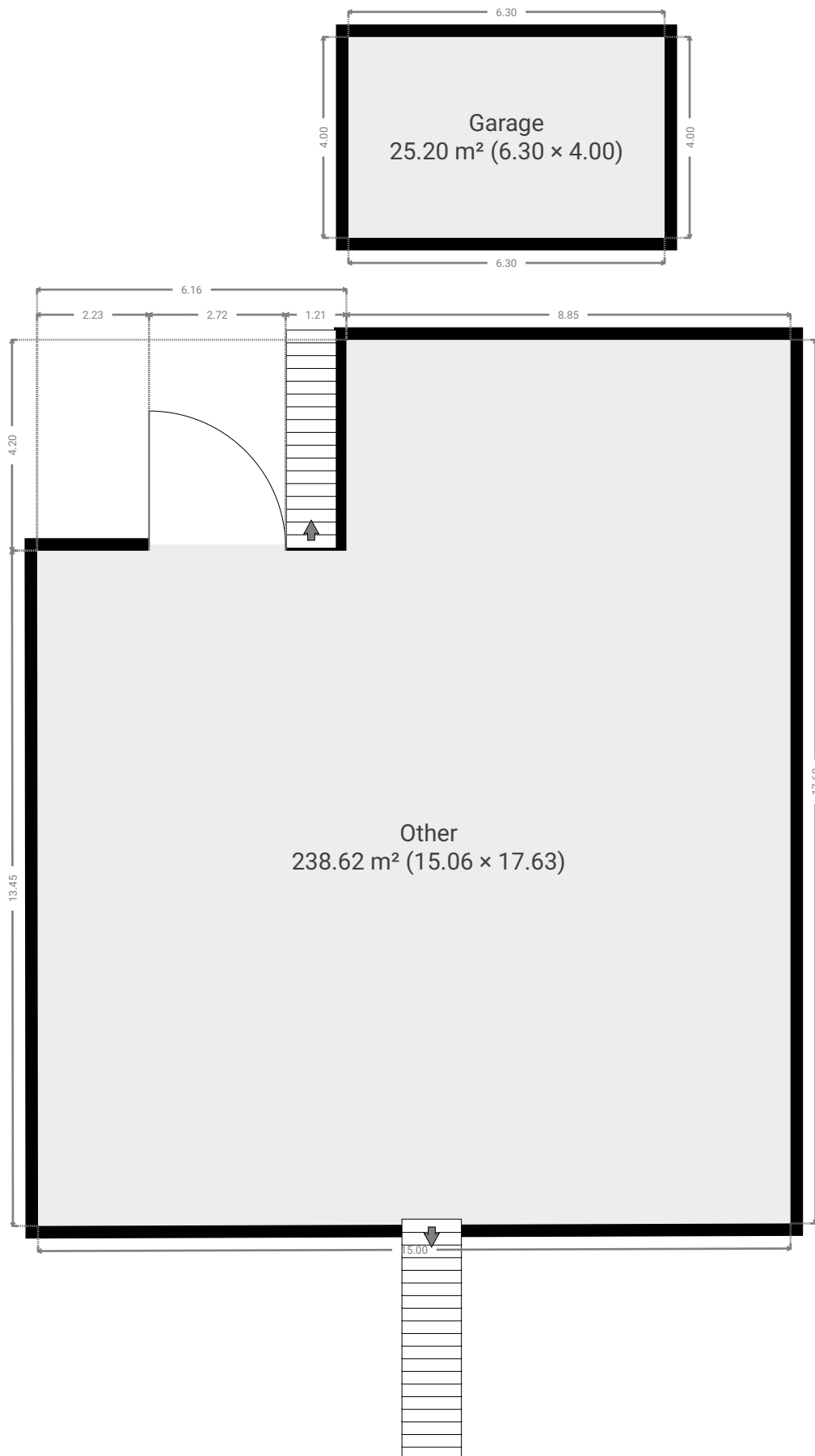
CREATED ON

2022-11-15

Floors

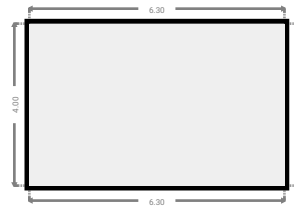
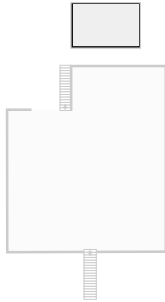
2

▼ Ground Floor



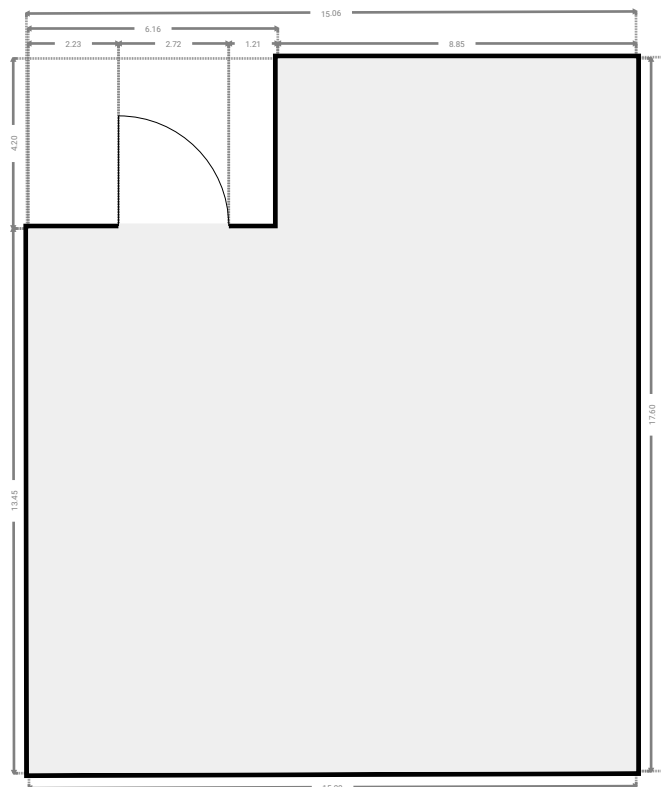
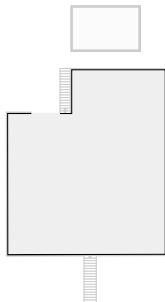
▼ **Garage**
Ground Floor

WIDTH: 6.30 m • LENGTH: 4.00 m
AREA: 25.20 m² • PERIMETER: 20.60 m

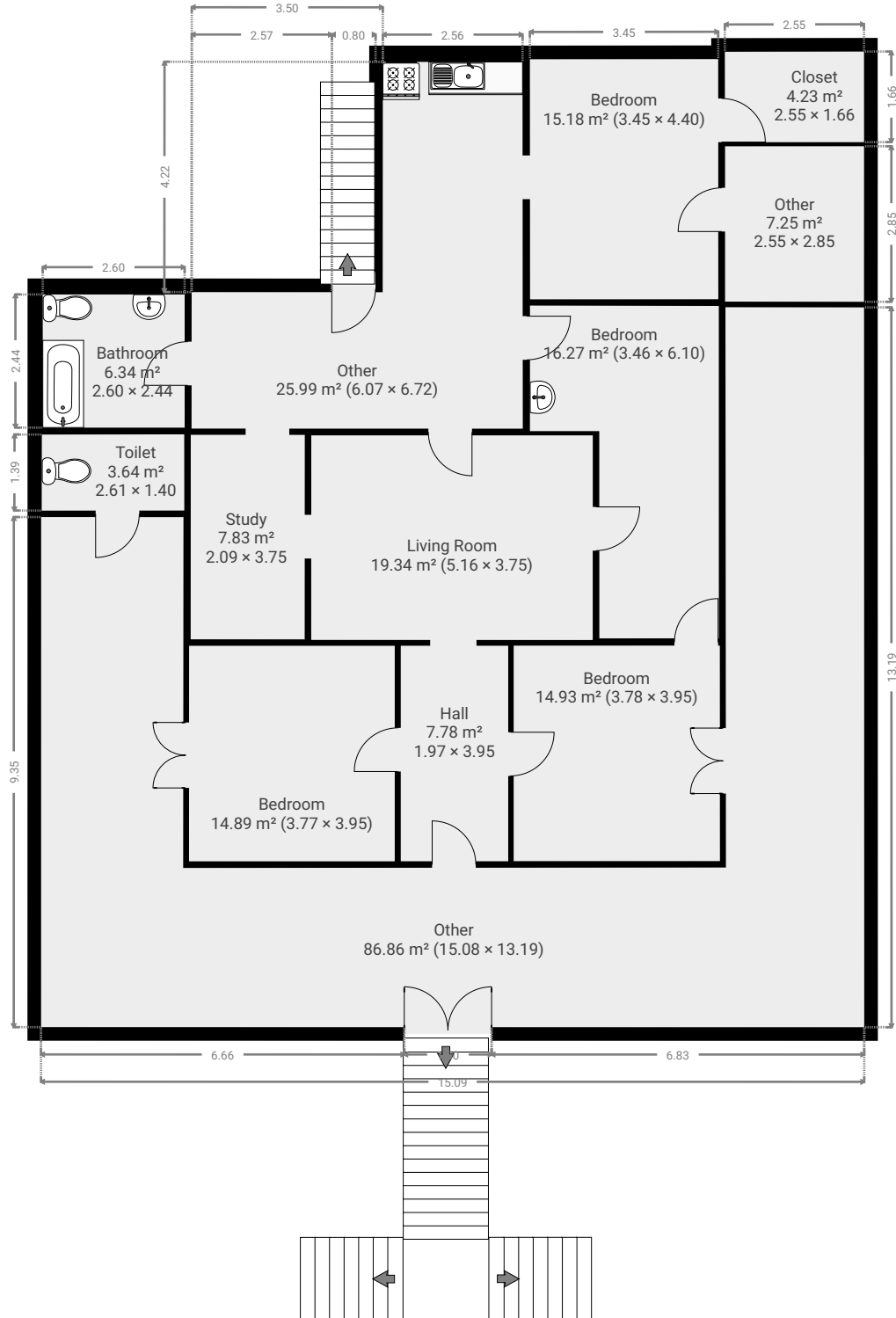


▼ **Other**
Ground Floor

WIDTH: 15.06 m • LENGTH: 17.63 m
AREA: 238.62 m² • PERIMETER: 65.26 m

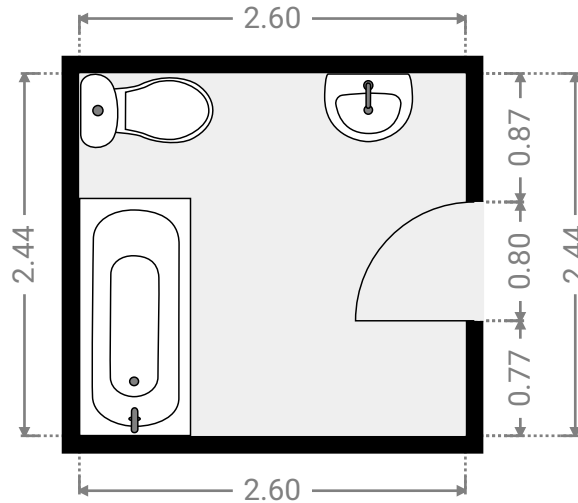
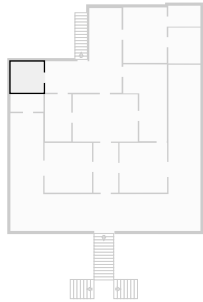


▼ 1st Floor



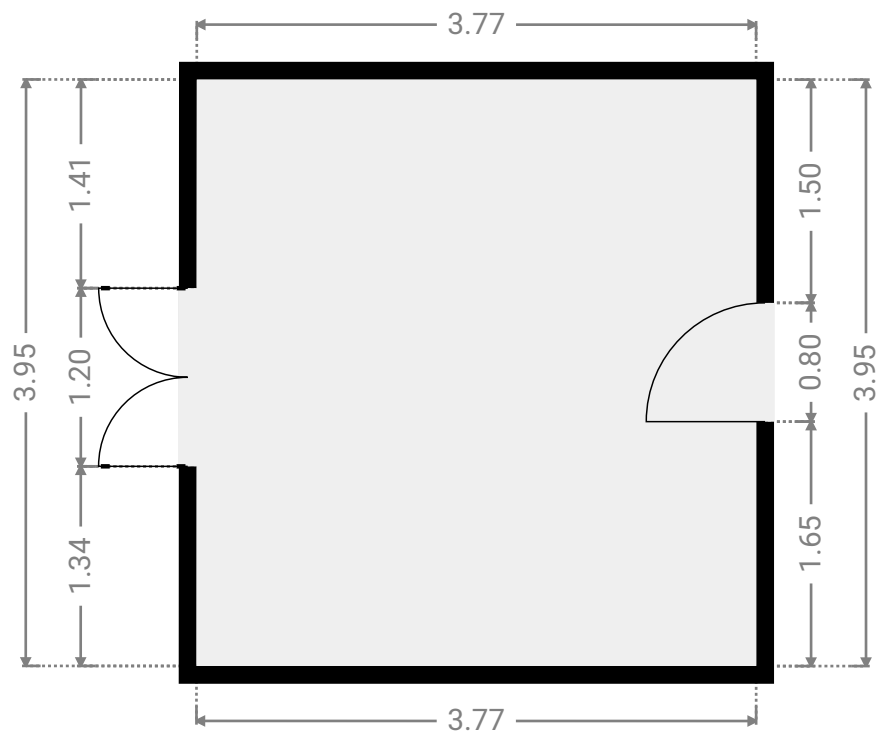
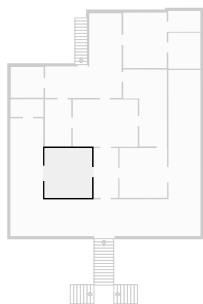
▼ **Bathroom**
1st Floor

WIDTH: 2.60 m • LENGTH: 2.44 m
AREA: 6.34 m² • PERIMETER: 10.08 m



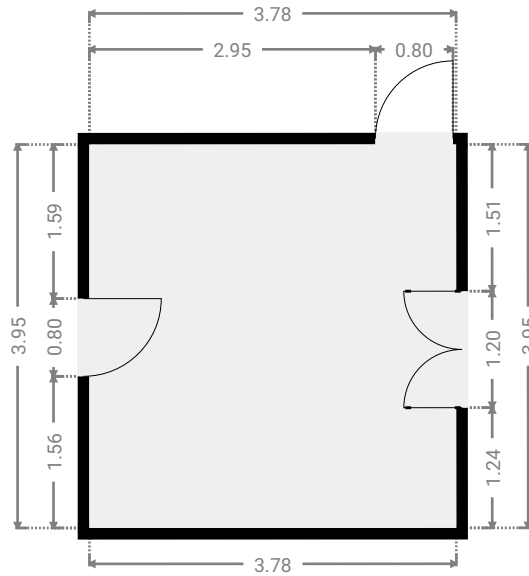
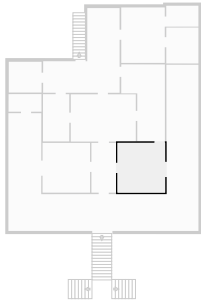
▼ **Bedroom**
1st Floor

WIDTH: 3.77 m • LENGTH: 3.95 m
AREA: 14.89 m² • PERIMETER: 15.44 m



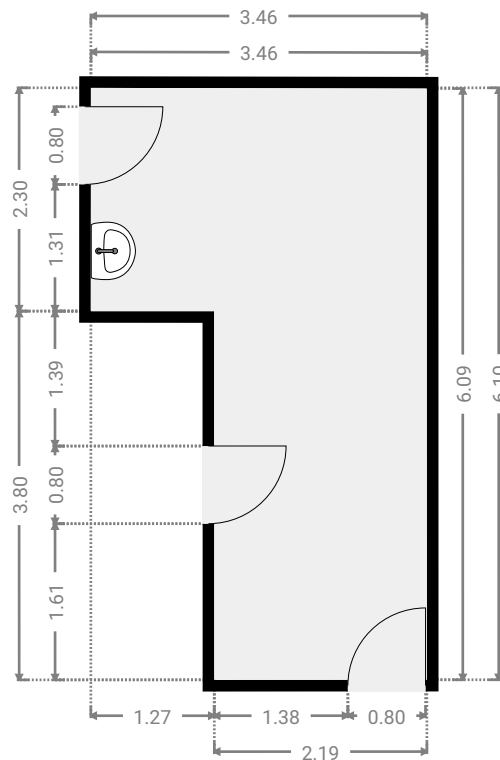
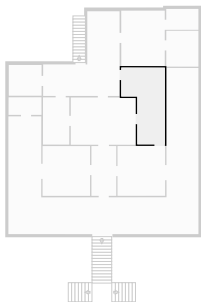
▼ **Bedroom**
1st Floor

WIDTH: 3.78 m • LENGTH: 3.95 m
AREA: 14.93 m² • PERIMETER: 15.46 m



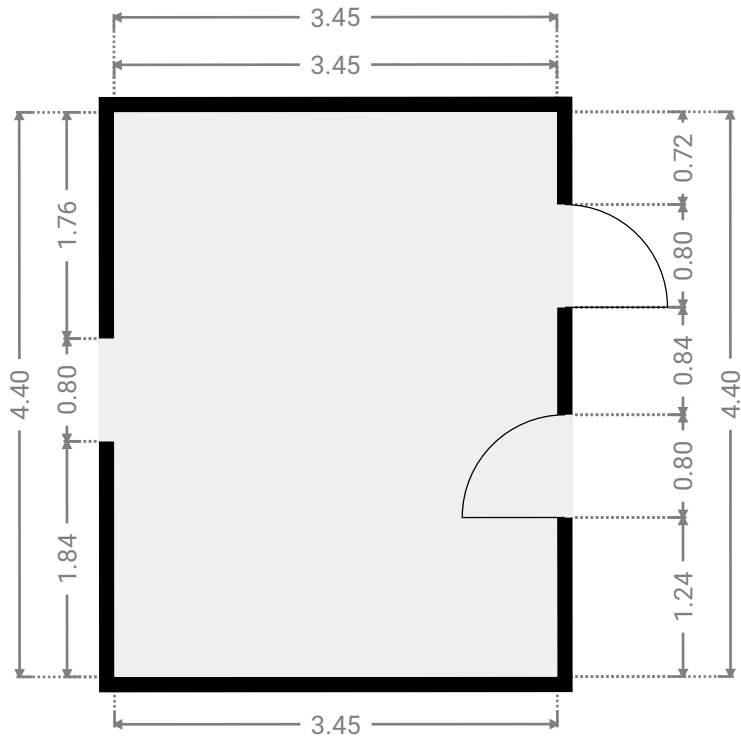
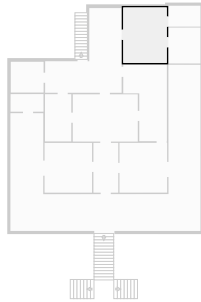
▼ **Bedroom**
1st Floor

WIDTH: 3.46 m • LENGTH: 6.10 m
AREA: 16.27 m² • PERIMETER: 19.11 m



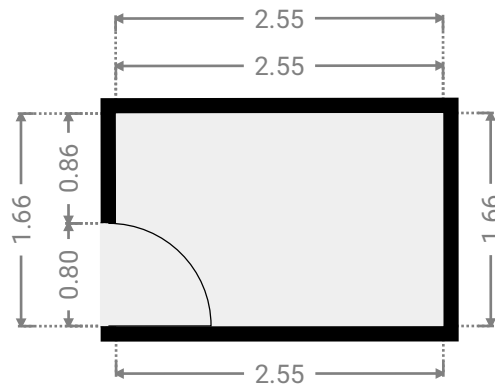
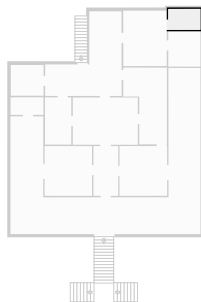
▼ **Bedroom**
1st Floor

WIDTH: 3.45 m • LENGTH: 4.40 m
AREA: 15.18 m² • PERIMETER: 15.70 m



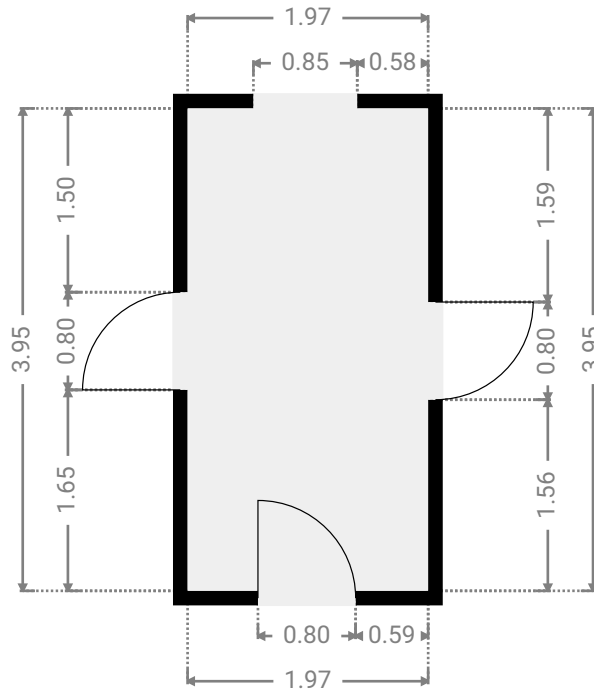
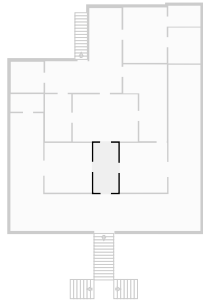
▼ **Closet**
1st Floor

WIDTH: 2.55 m • LENGTH: 1.66 m
AREA: 4.23 m² • PERIMETER: 8.42 m



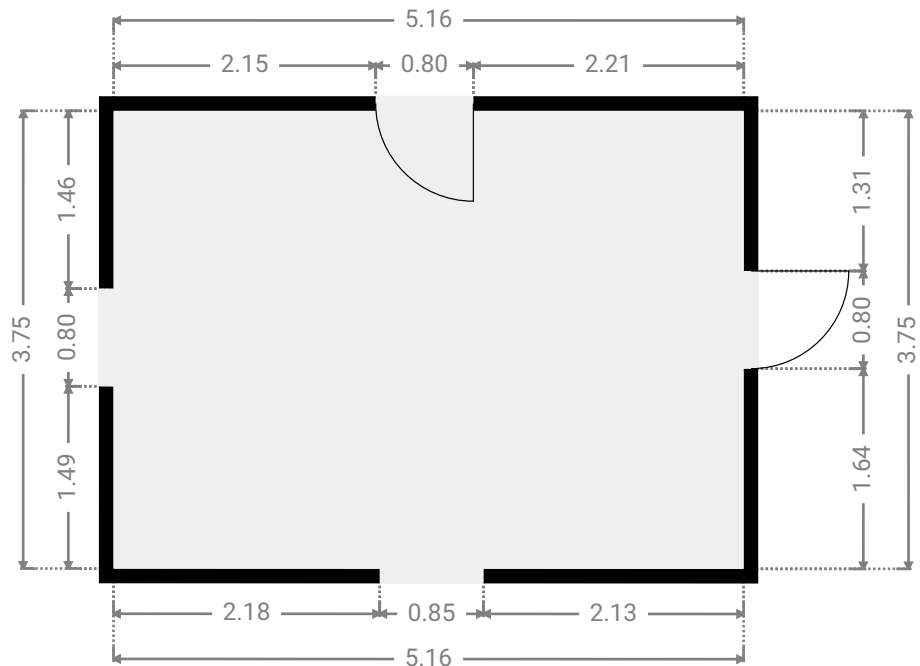
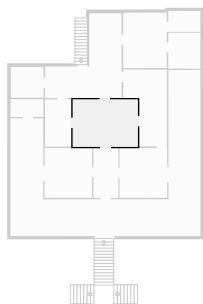
▼ **Hall**
1st Floor

WIDTH: 1.97 m • LENGTH: 3.95 m
AREA: 7.78 m² • PERIMETER: 11.84 m



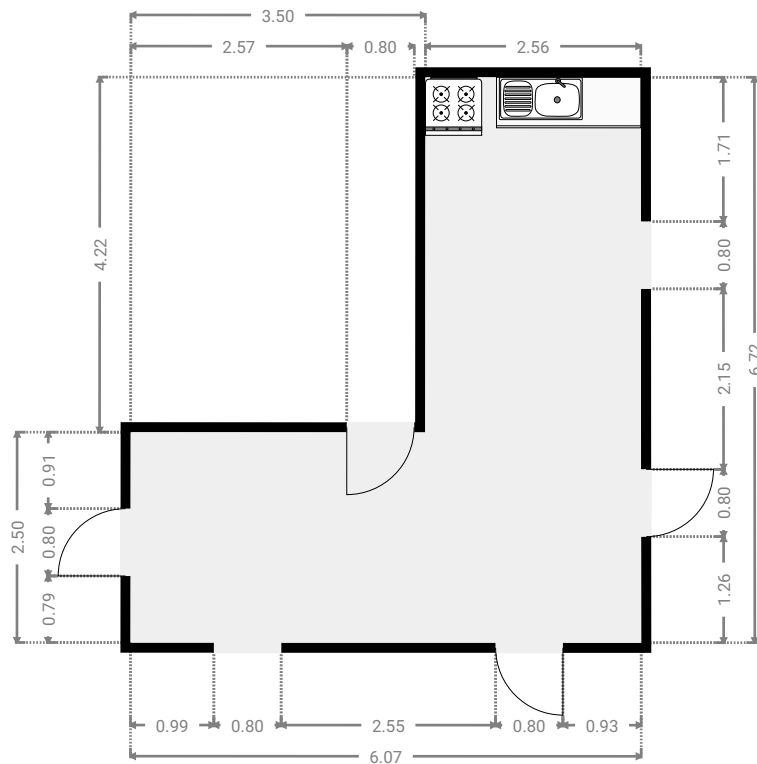
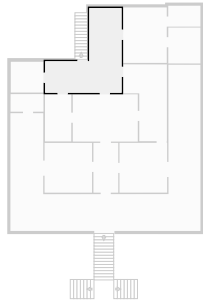
▼ **Living Room**
1st Floor

WIDTH: 5.16 m • LENGTH: 3.75 m
AREA: 19.34 m² • PERIMETER: 17.82 m



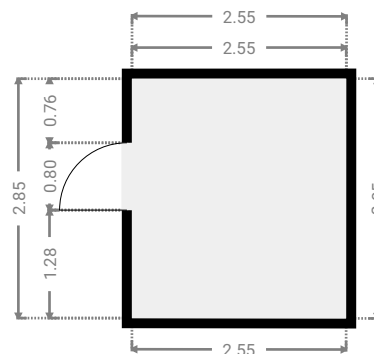
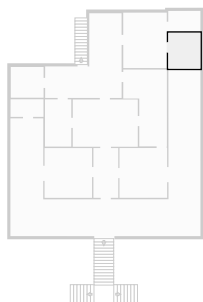
▼ Other
1st Floor

WIDTH: 6.07 m • LENGTH: 6.72 m
AREA: 25.99 m² • PERIMETER: 25.57 m



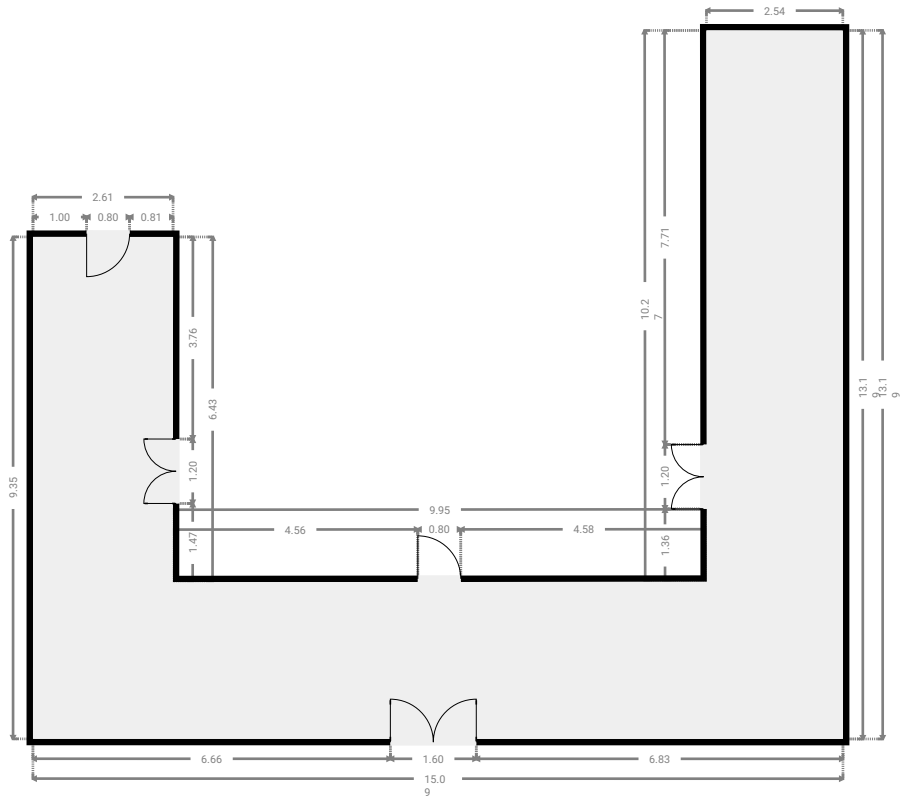
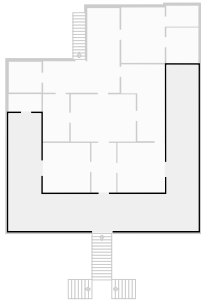
▼ Other
1st Floor

WIDTH: 2.55 m • LENGTH: 2.85 m
AREA: 7.25 m² • PERIMETER: 10.79 m



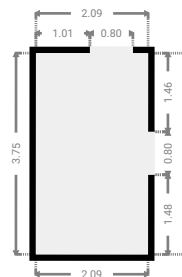
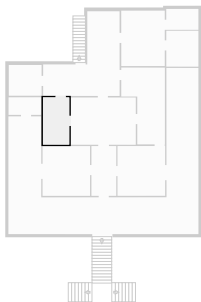
▼ Other
1st Floor

WIDTH: 15.08 m • LENGTH: 13.19 m
AREA: 86.86 m² • PERIMETER: 69.42 m



▼ Study
1st Floor

WIDTH: 2.09 m • LENGTH: 3.75 m
AREA: 7.83 m² • PERIMETER: 11.67 m



▼ Toilet
1st Floor

WIDTH: 2.61 m • LENGTH: 1.40 m
AREA: 3.64 m² • PERIMETER: 8.01 m

