

23 Lambourne Av

SUBMITTED BY

Ray White Rockhampton Casey
stockers@cqoz.com

CREATED ON

2022-09-28

Floors

1

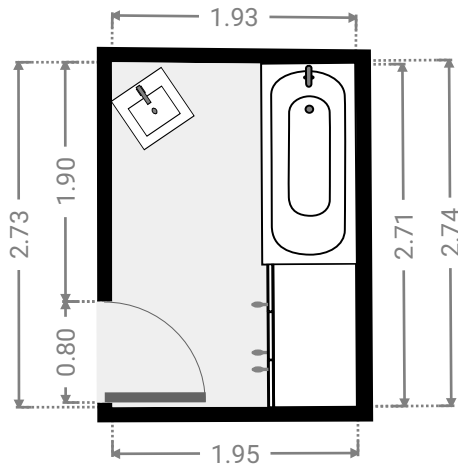
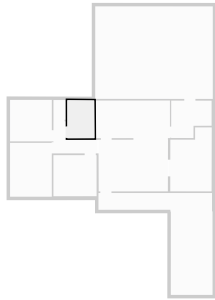
▼ Ground Floor



FLOORS: 1

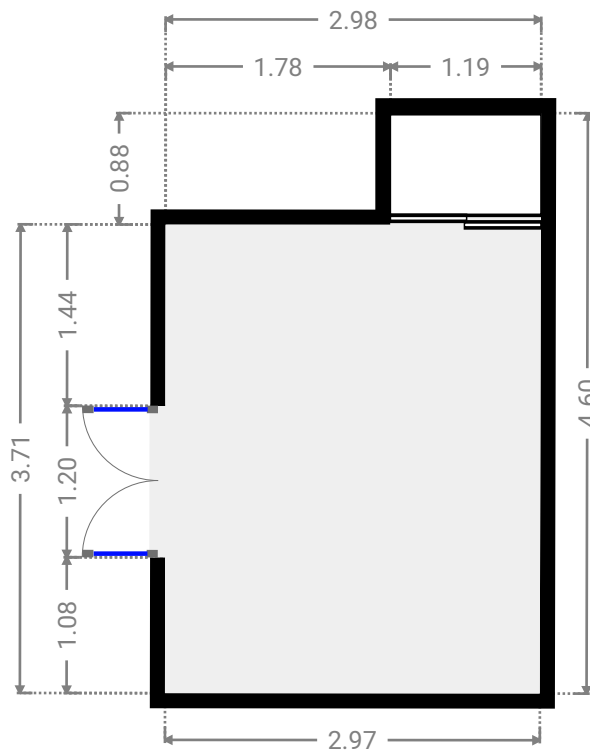
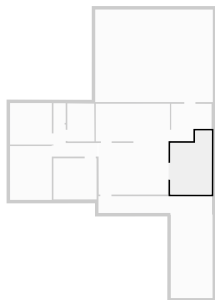
▼ Bathroom
Ground Floor

WIDTH: 1.95 m • LENGTH: 2.74 m
AREA: 5.28 m² • PERIMETER: 9.32 m



▼ Bedroom
Ground Floor

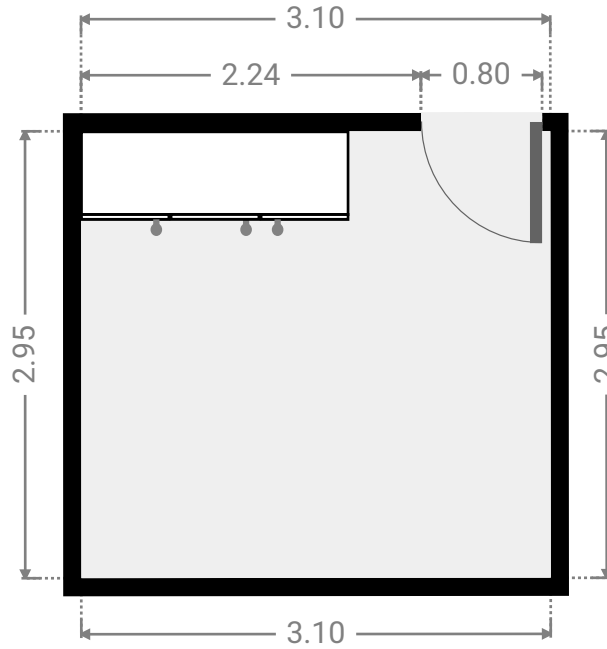
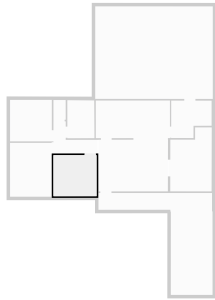
WIDTH: 2.98 m • LENGTH: 4.60 m
AREA: 12.09 m² • PERIMETER: 15.14 m



FLOORS: 1

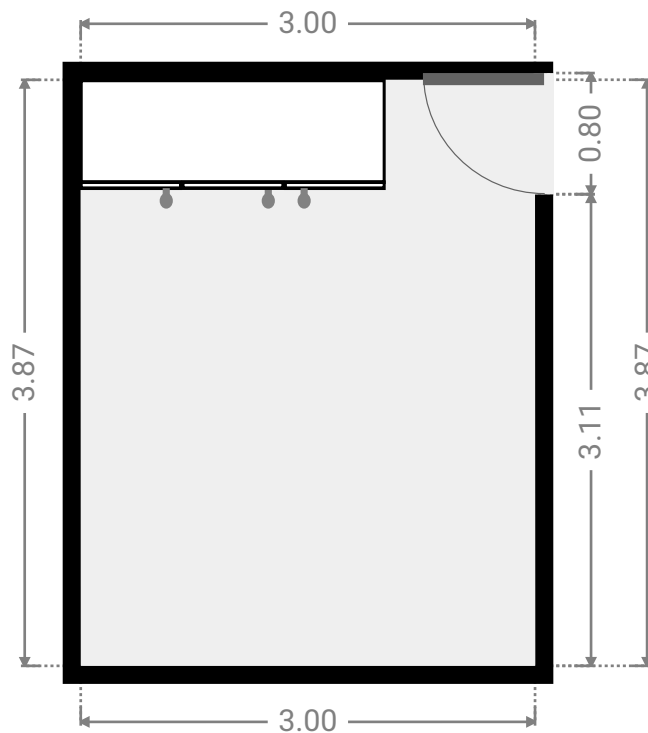
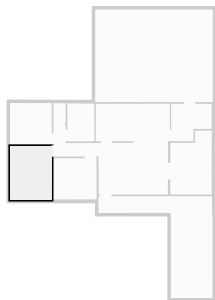
▼ Bedroom
Ground Floor

WIDTH: 3.10 m • LENGTH: 2.95 m
AREA: 9.15 m² • PERIMETER: 12.10 m



▼ Bedroom
Ground Floor

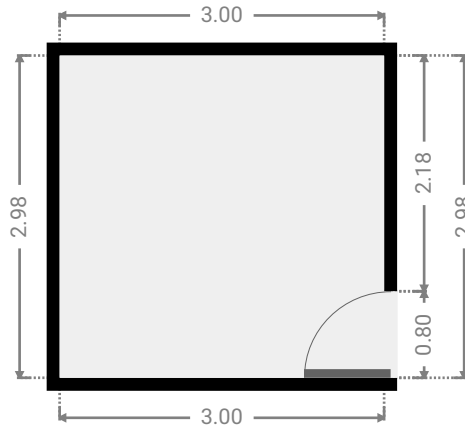
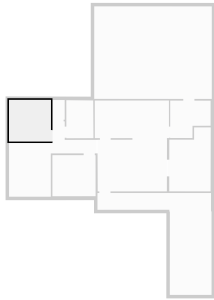
WIDTH: 3.00 m • LENGTH: 3.87 m
AREA: 11.61 m² • PERIMETER: 13.74 m



FLOORS: 1

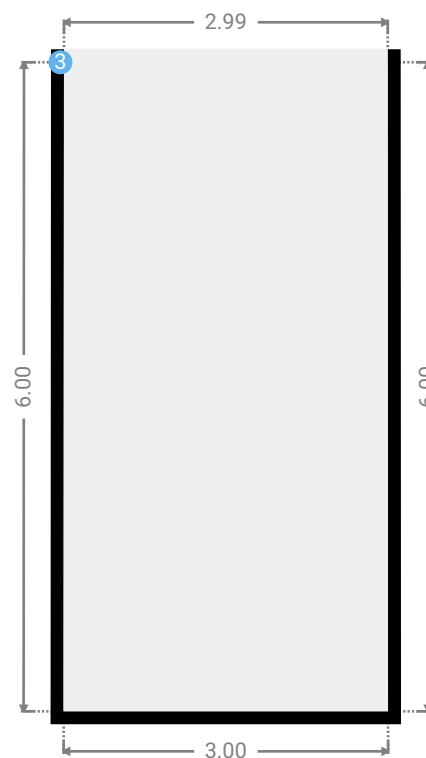
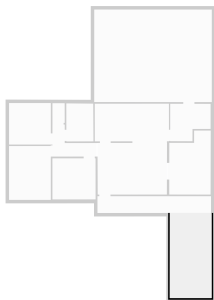
▼ **Bedroom**
Ground Floor

WIDTH: 3.00 m • LENGTH: 2.98 m
AREA: 8.94 m² • PERIMETER: 11.96 m



▼ **Garage**
Ground Floor

WIDTH: 3.00 m • LENGTH: 6.00 m
AREA: 17.98 m² • PERIMETER: 17.99 m



▼ **Garage**/Ground Floor

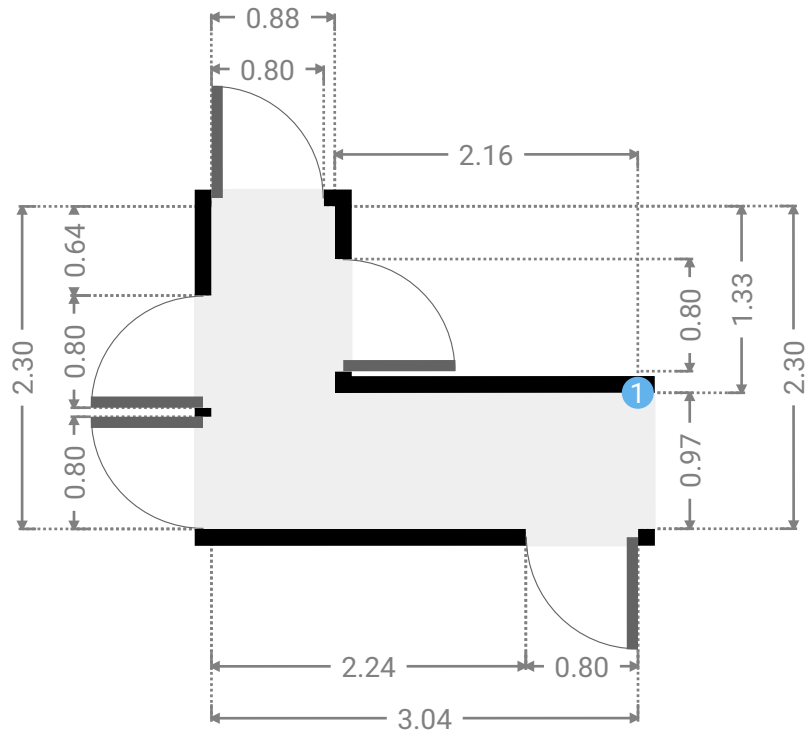
3 **OPENING**

Height
0.00 m



▼ **Hall**
Ground Floor

WIDTH: 3.04 m • LENGTH: 2.30 m
AREA: 4.12 m² • PERIMETER: 10.68 m



▼ **Hall/Ground Floor**

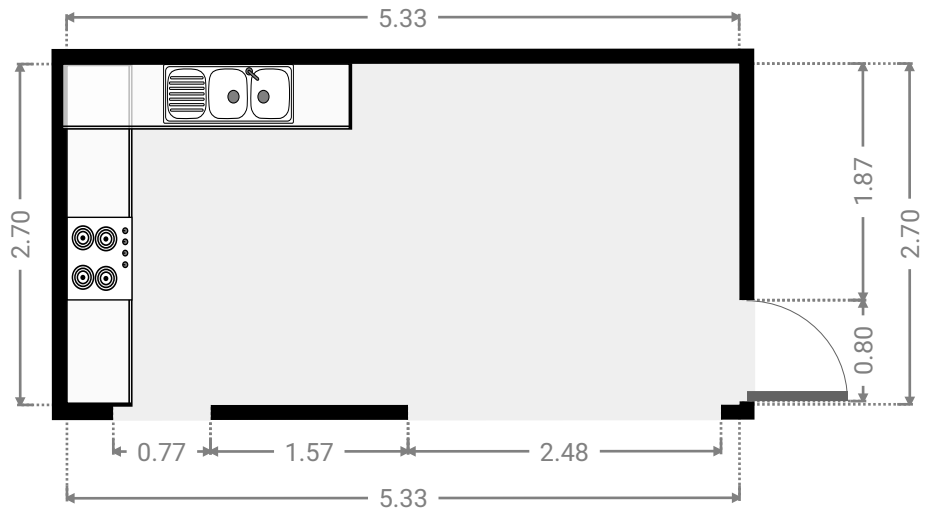
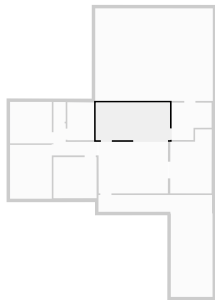
1 **OPENING**

Height
0.00 m



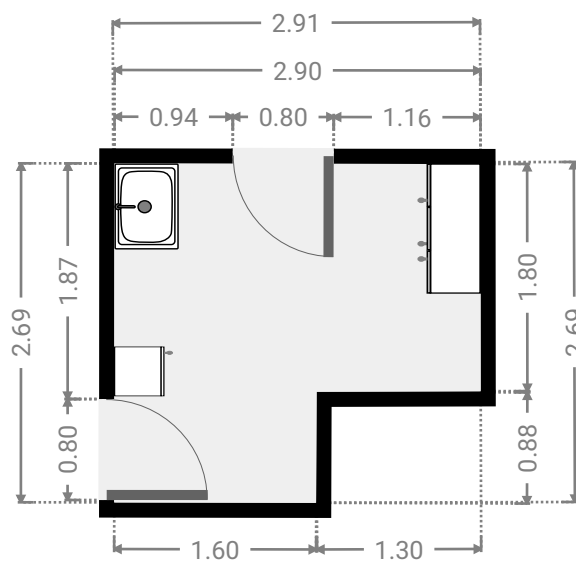
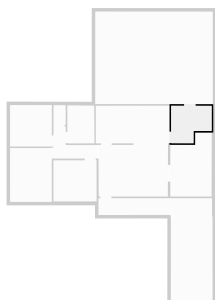
▼ Kitchen
Ground Floor

WIDTH: 5.33 m • LENGTH: 2.70 m
AREA: 14.39 m² • PERIMETER: 16.06 m



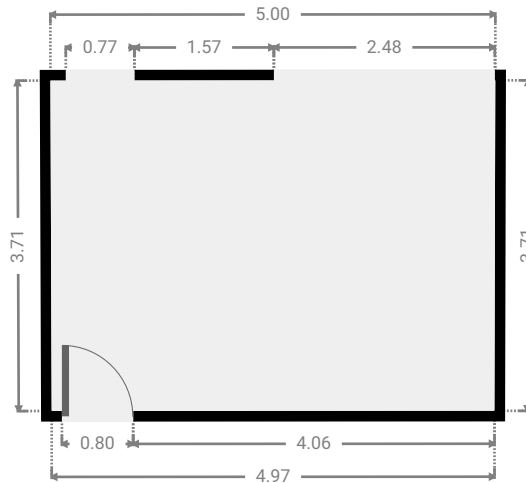
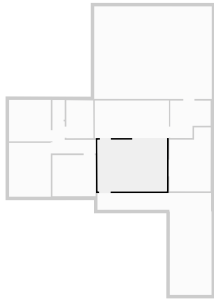
▼ Laundry Room
Ground Floor

WIDTH: 2.91 m • LENGTH: 2.69 m
AREA: 6.65 m² • PERIMETER: 11.17 m



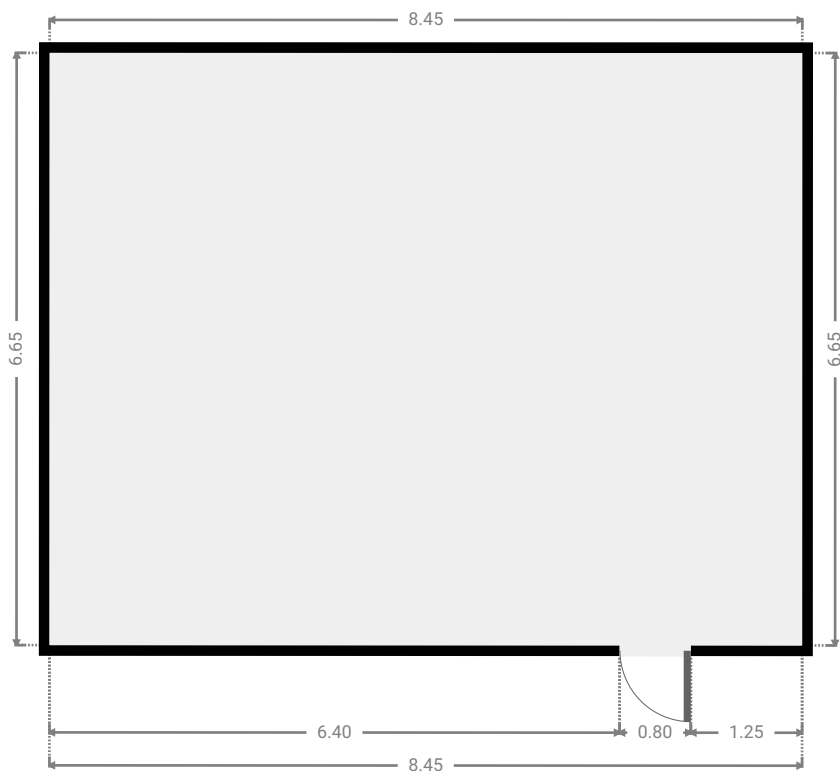
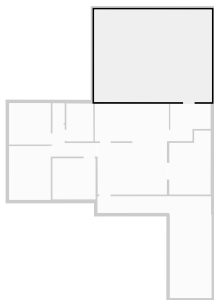
▼ **Living Room**
Ground Floor

WIDTH: 5.00 m • LENGTH: 3.71 m
AREA: 18.49 m² • PERIMETER: 17.39 m



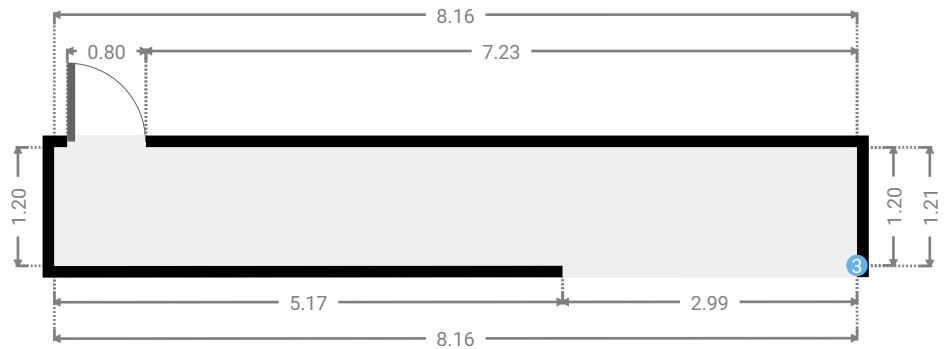
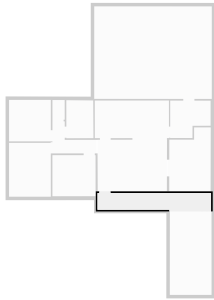
▼ **Other**
Ground Floor

WIDTH: 8.45 m • LENGTH: 6.65 m
AREA: 56.18 m² • PERIMETER: 30.20 m



▼ **Other**
Ground Floor

WIDTH: 8.16 m • LENGTH: 1.21 m
AREA: 9.81 m² • PERIMETER: 18.73 m



▼ **Toilet**
Ground Floor

WIDTH: 0.88 m • LENGTH: 1.41 m
AREA: 1.24 m² • PERIMETER: 4.58 m

