

23 Joseph Street, Gracemere.

SUBMITTED BY

Ray White Rockhampton Casey
stockers@rwoz.com

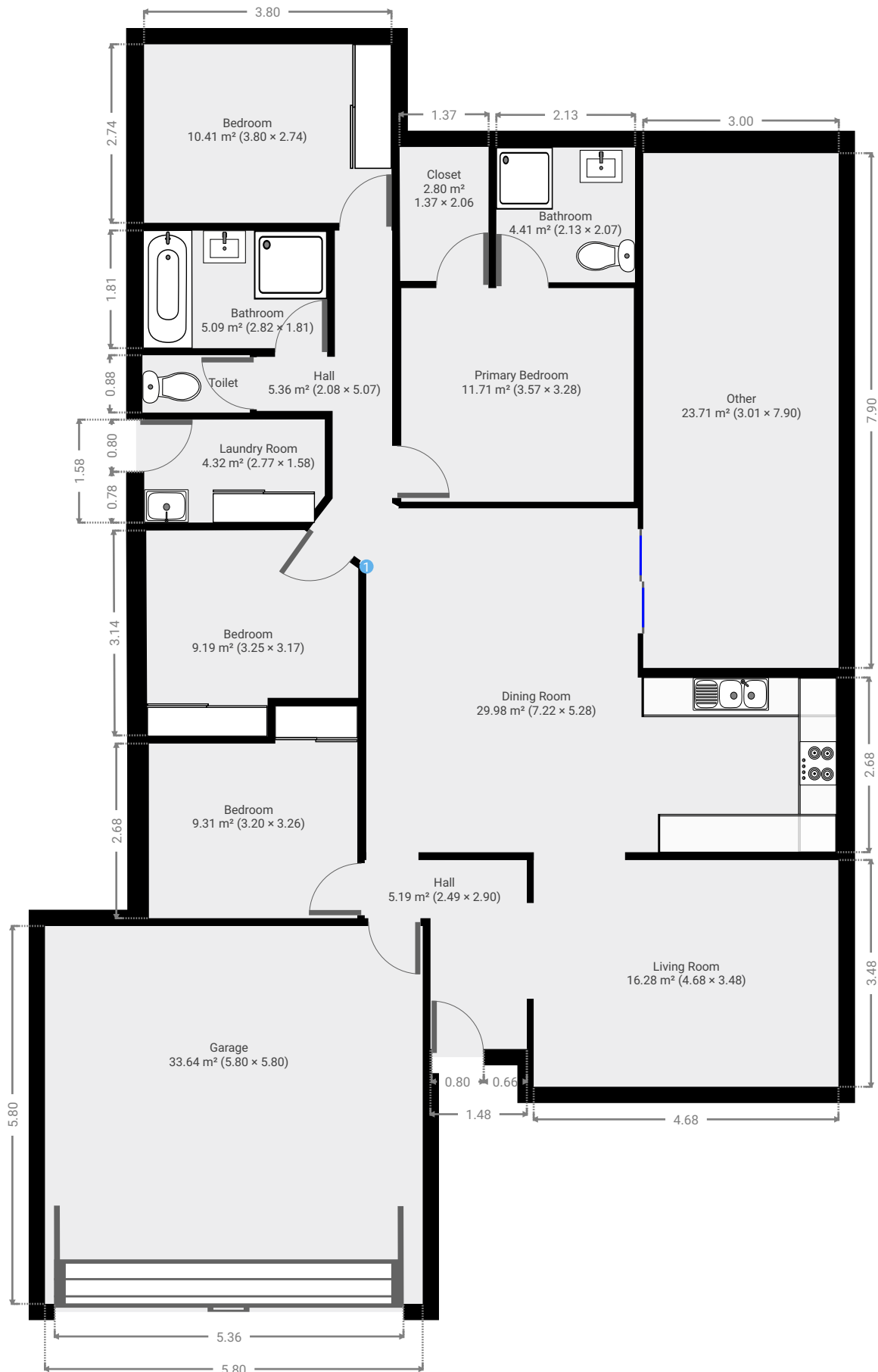
CREATED ON

2022-08-17

Floors

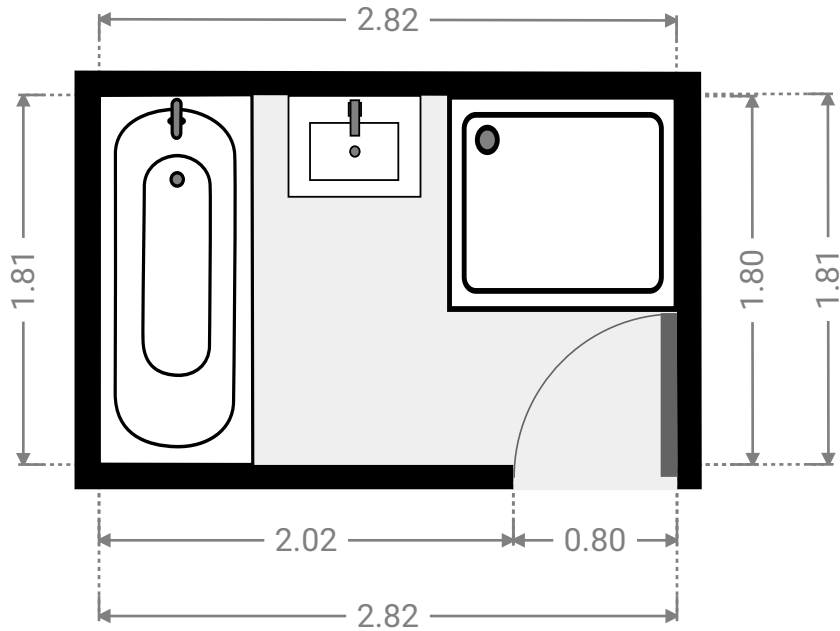
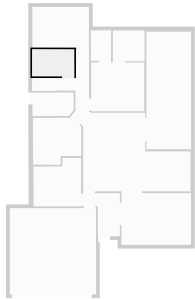
1

▼ Ground Floor



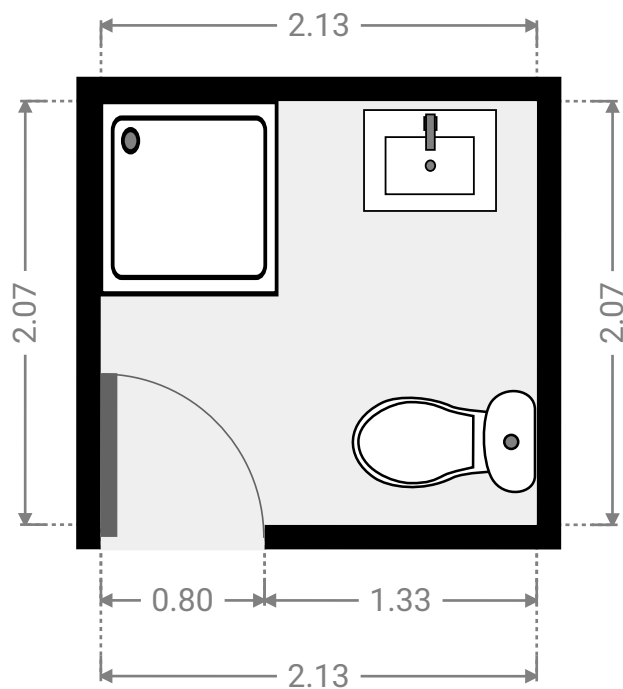
▼ **Bathroom**
Ground Floor

WIDTH: 2.82 m • LENGTH: 1.81 m
AREA: 5.09 m² • PERIMETER: 9.25 m



▼ **Bathroom**
Ground Floor

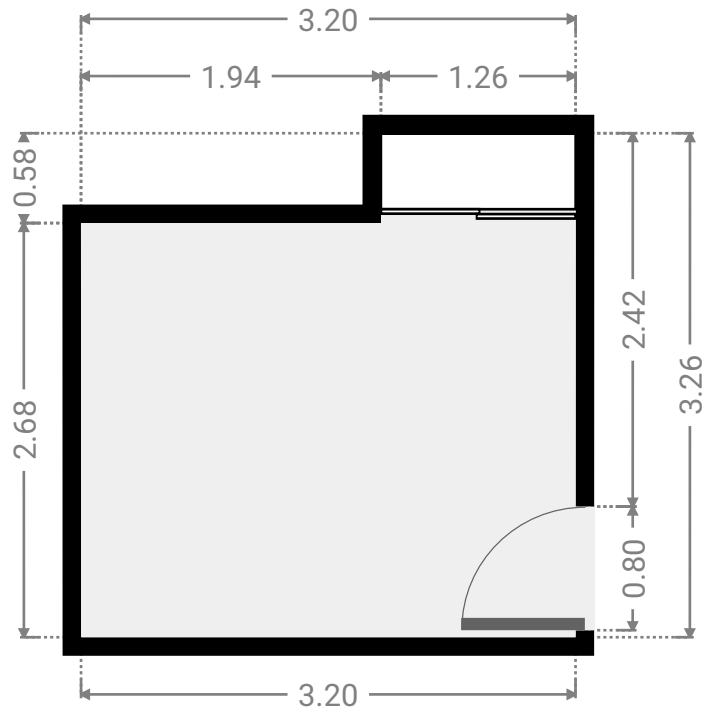
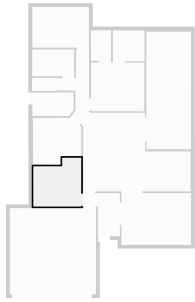
WIDTH: 2.13 m • LENGTH: 2.07 m
AREA: 4.41 m² • PERIMETER: 8.40 m



FLOORS: 1

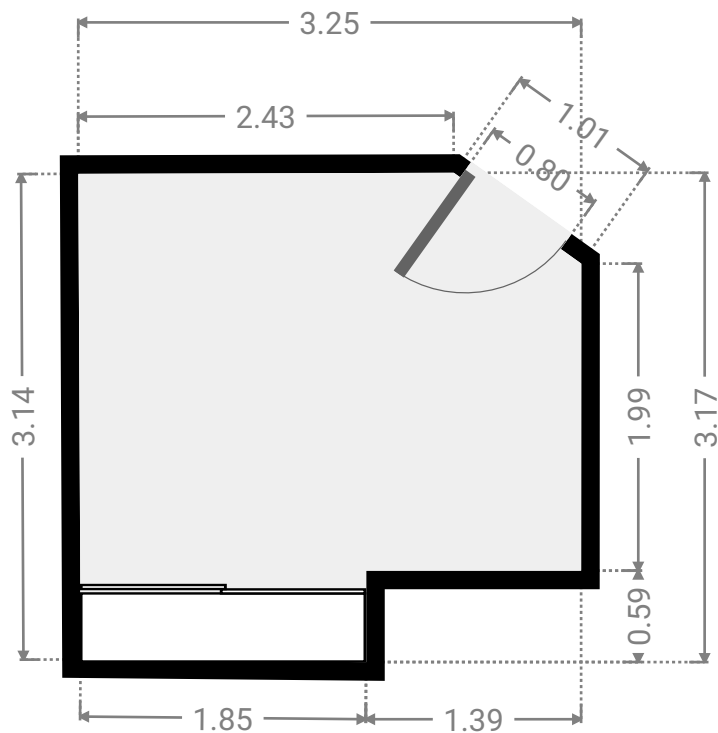
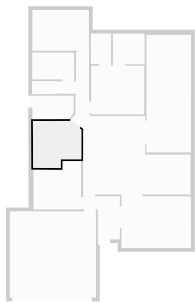
▼ **Bedroom**
Ground Floor

WIDTH: 3.20 m • LENGTH: 3.26 m
AREA: 9.31 m² • PERIMETER: 12.92 m



▼ **Bedroom**
Ground Floor

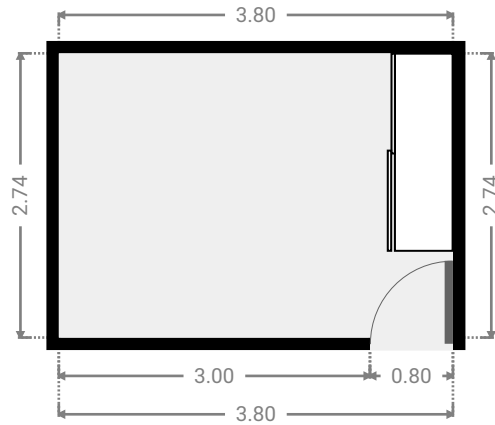
WIDTH: 3.25 m • LENGTH: 3.17 m
AREA: 9.19 m² • PERIMETER: 12.40 m



FLOORS: 1

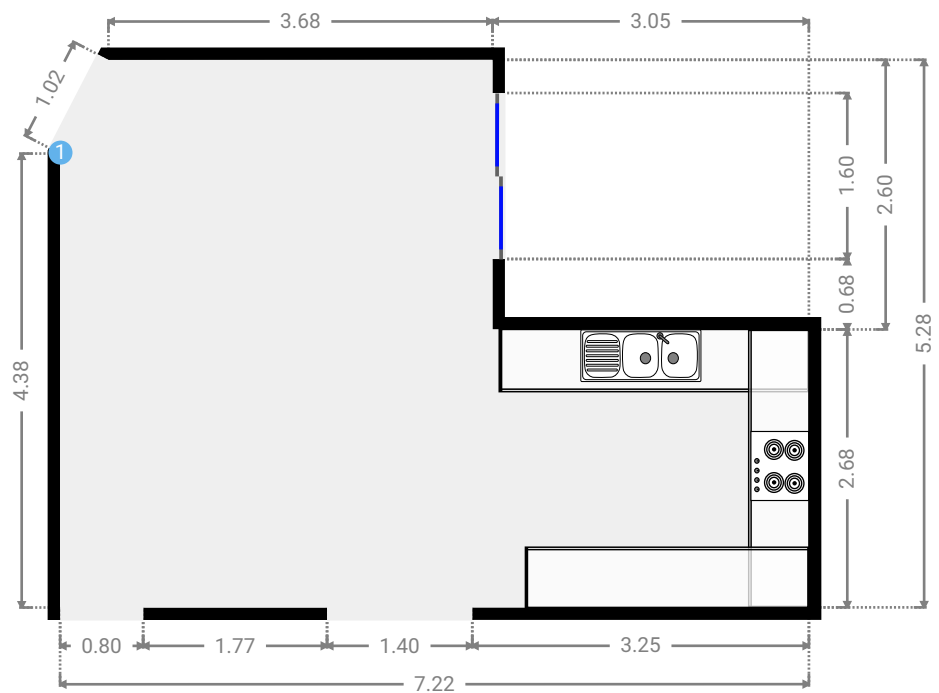
▼ **Bedroom**
Ground Floor

WIDTH: 3.80 m • LENGTH: 2.74 m
AREA: 10.41 m² • PERIMETER: 13.08 m



▼ **Dining Room**
Ground Floor

WIDTH: 7.22 m • LENGTH: 5.28 m
AREA: 29.98 m² • PERIMETER: 24.65 m



▼ Dining Room/Ground Floor

1 OPENING

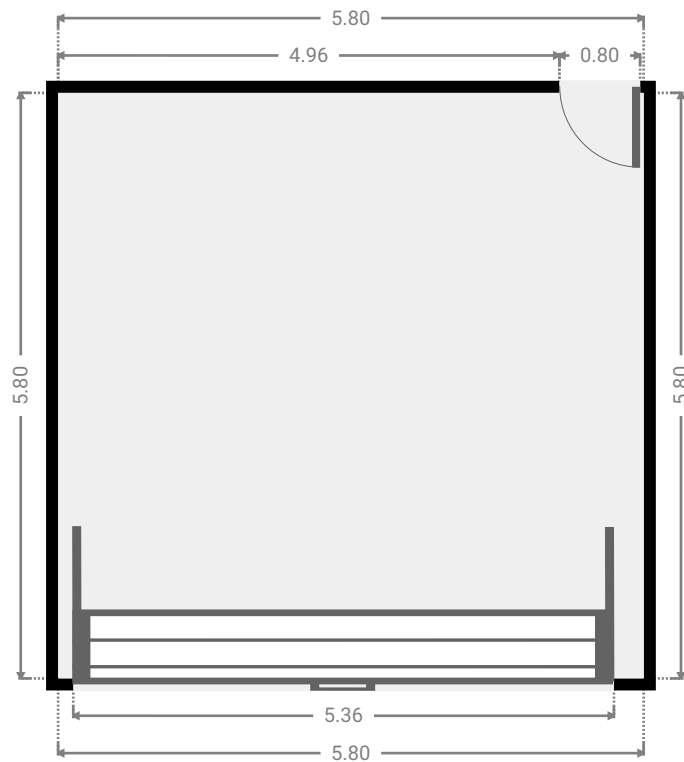
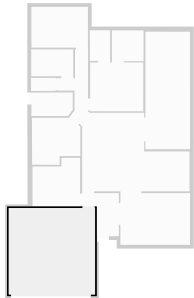
Height
0.00 m



FLOORS: 1

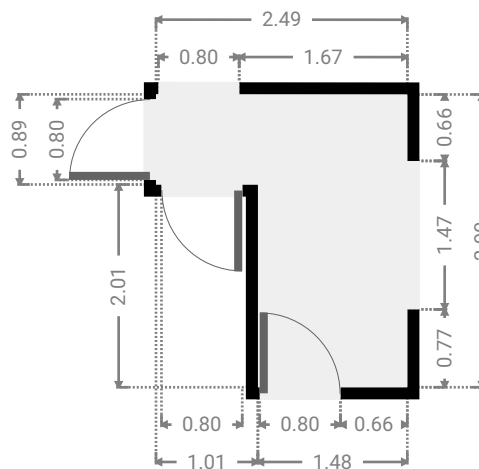
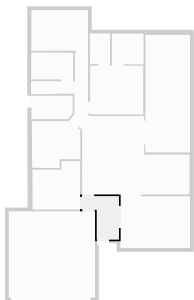
▼ **Garage**
Ground Floor

WIDTH: 5.80 m • LENGTH: 5.80 m
AREA: 33.64 m² • PERIMETER: 23.20 m



▼ **Hall**
Ground Floor

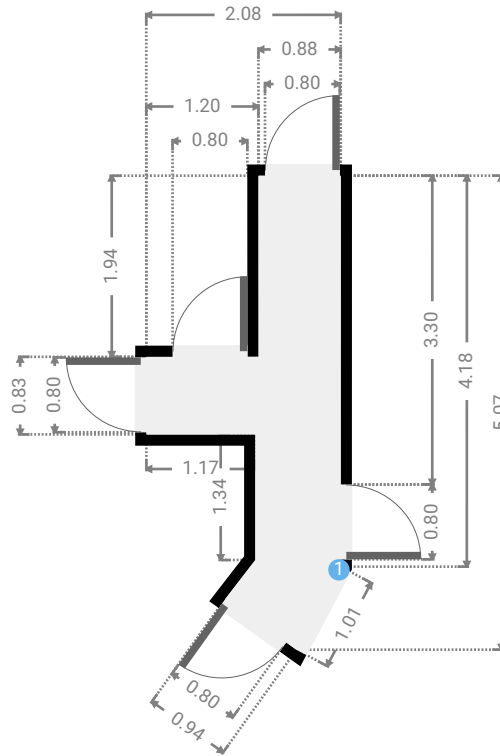
WIDTH: 2.49 m • LENGTH: 2.90 m
AREA: 5.19 m² • PERIMETER: 10.78 m



FLOORS: 1

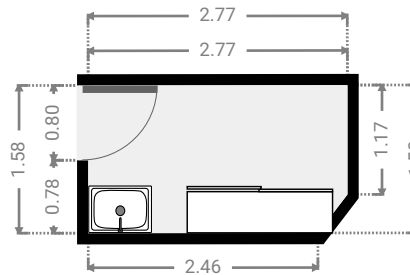
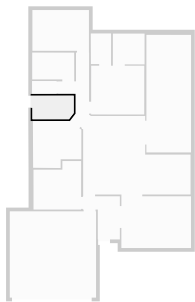
▼ Hall
Ground Floor

WIDTH: 2.08 m • LENGTH: 5.07 m
AREA: 5.36 m² • PERIMETER: 14.01 m



▼ Laundry Room
Ground Floor

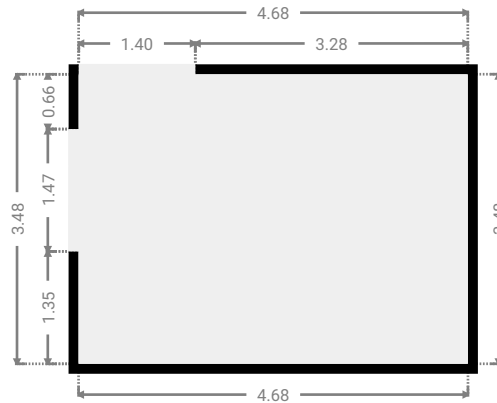
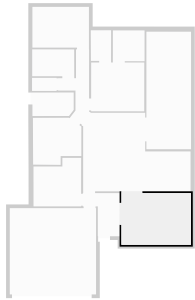
WIDTH: 2.77 m • LENGTH: 1.58 m
AREA: 4.32 m² • PERIMETER: 8.50 m



FLOORS: 1

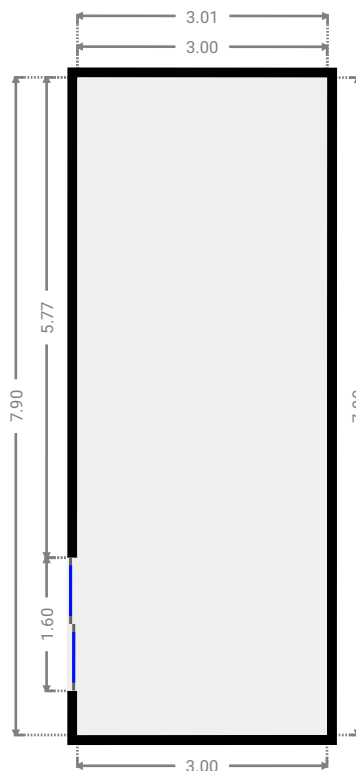
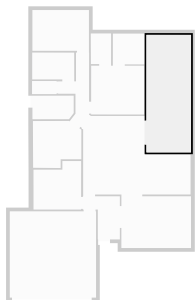
▼ Living Room
Ground Floor

WIDTH: 4.68 m • LENGTH: 3.48 m
AREA: 16.28 m² • PERIMETER: 16.32 m



▼ Other
Ground Floor

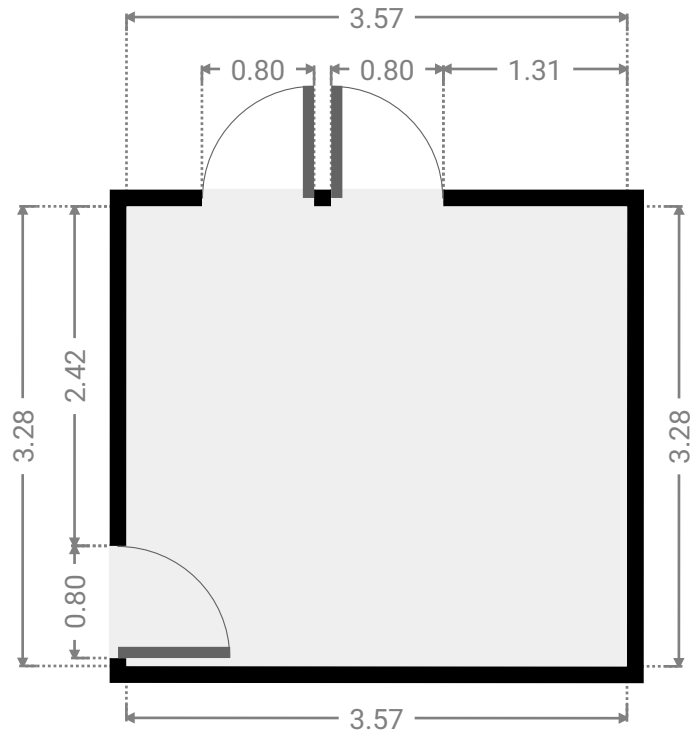
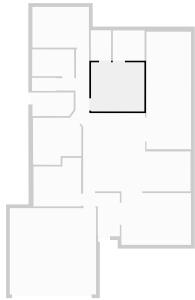
WIDTH: 3.01 m • LENGTH: 7.90 m
AREA: 23.71 m² • PERIMETER: 21.81 m



FLOORS: 1

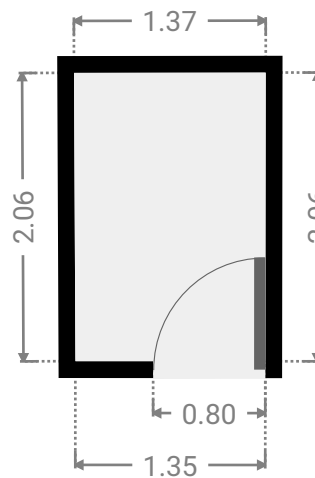
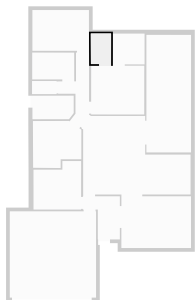
▼ Primary Bedroom
Ground Floor

WIDTH: 3.57 m • LENGTH: 3.28 m
AREA: 11.71 m² • PERIMETER: 13.70 m



▼ Closet
Ground Floor

WIDTH: 1.37 m • LENGTH: 2.06 m
AREA: 2.80 m² • PERIMETER: 6.84 m



▼ Toilet
Ground Floor

WIDTH: 1.65 m • LENGTH: 0.88 m
AREA: 1.45 m² • PERIMETER: 5.06 m

