

23 Hinton Street

SUBMITTED BY
Ray White Rockhampton Casey
stockers@cqoz.com

CREATED ON
2022-02-18

Floors
1

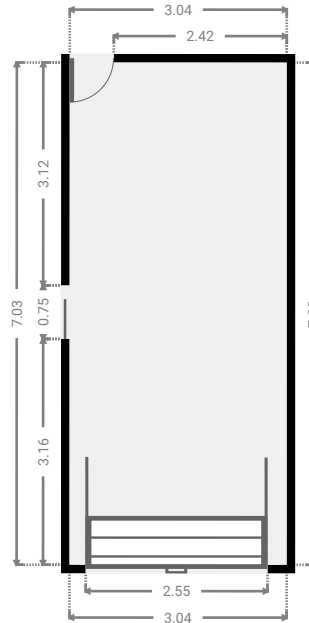
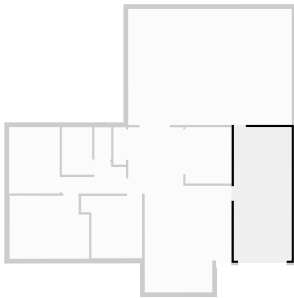
▼ Ground Floor



FLOORS: 1

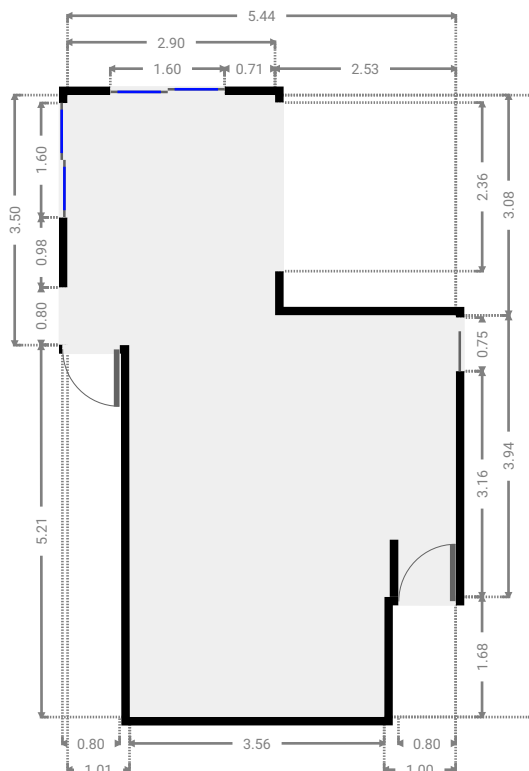
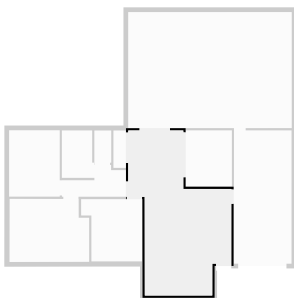
▼ Garage
Ground Floor

WIDTH: 3.04 m • LENGTH: 7.03 m
AREA: 21.36 m² • PERIMETER: 20.14 m



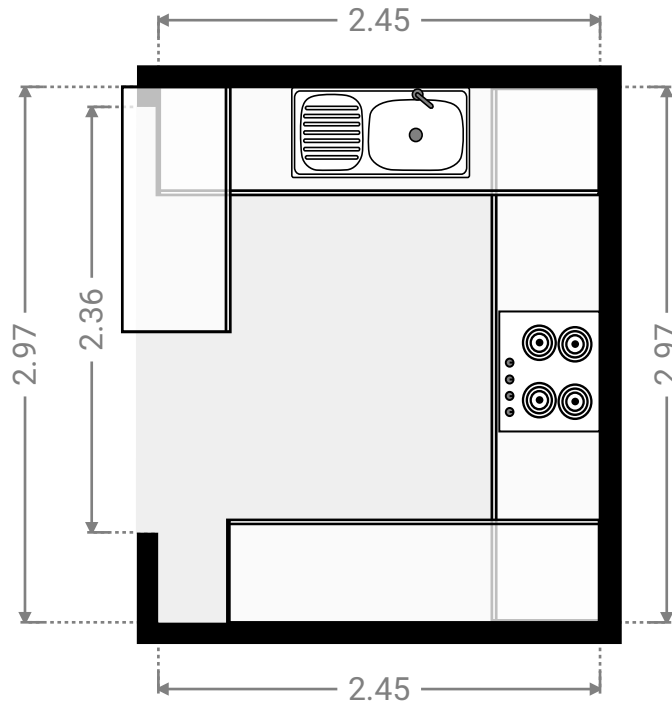
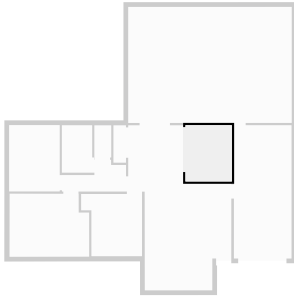
▼ Living Room
Ground Floor

WIDTH: 5.44 m • LENGTH: 8.71 m
AREA: 33.29 m² • PERIMETER: 28.27 m



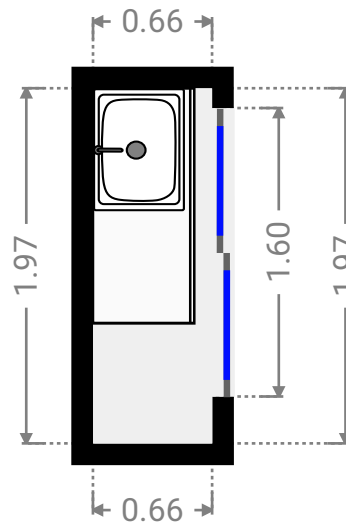
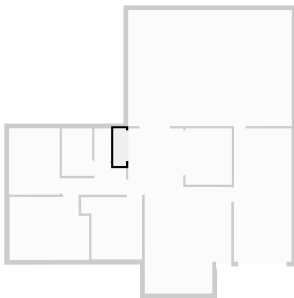
▼ **Kitchen**
Ground Floor

WIDTH: 2.45 m • LENGTH: 2.97 m
AREA: 7.28 m² • PERIMETER: 10.84 m



▼ **Laundry Room**
Ground Floor

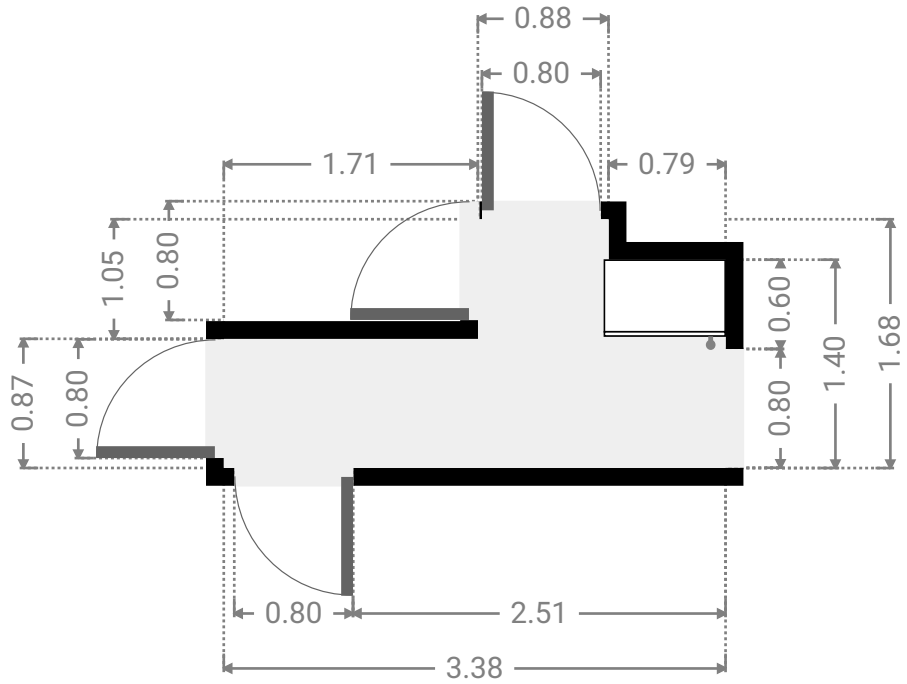
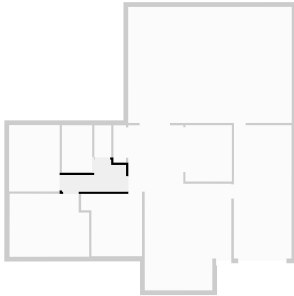
WIDTH: 0.66 m • LENGTH: 1.97 m
AREA: 1.30 m² • PERIMETER: 5.26 m



FLOORS: 1

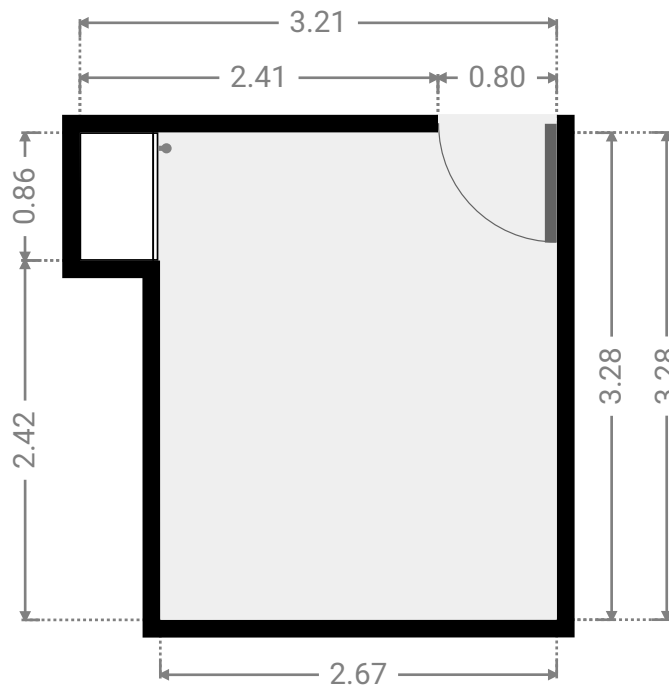
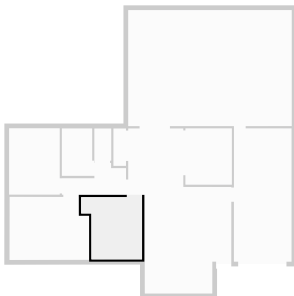
▼ Hall
Ground Floor

WIDTH: 3.38 m • LENGTH: 1.68 m
AREA: 4.07 m² • PERIMETER: 10.11 m



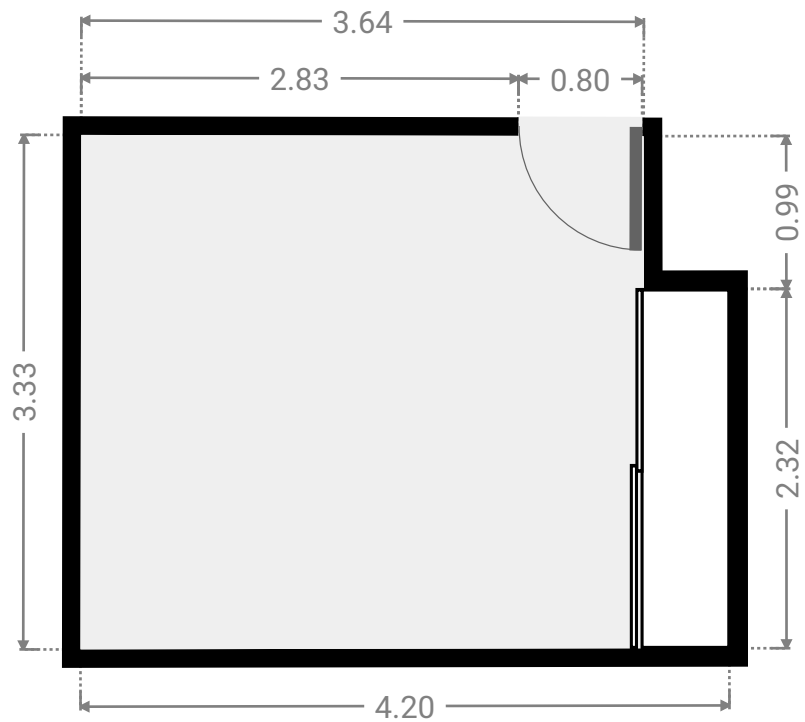
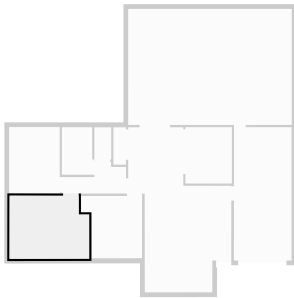
▼ Bedroom
Ground Floor

WIDTH: 3.21 m • LENGTH: 3.28 m
AREA: 9.23 m² • PERIMETER: 12.98 m



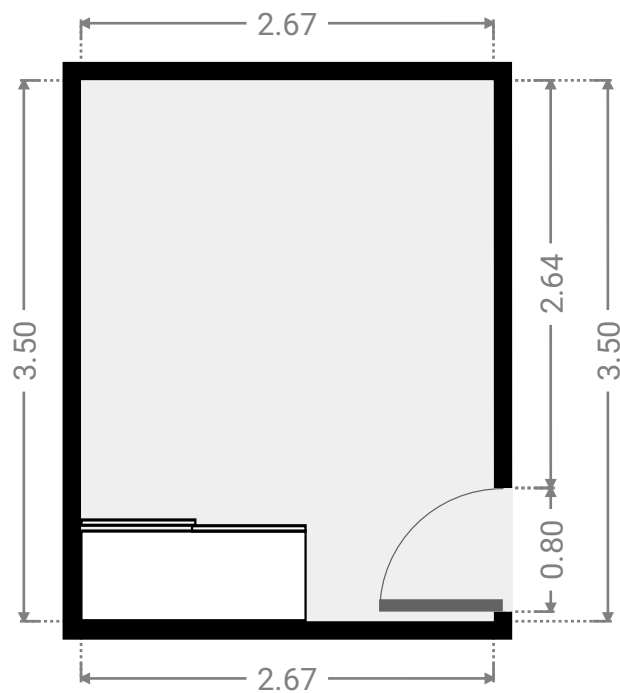
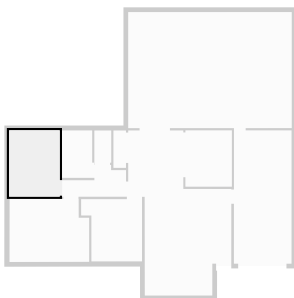
▼ **Bedroom**
Ground Floor

WIDTH: 4.20 m • LENGTH: 3.33 m
AREA: 13.39 m² • PERIMETER: 15.04 m



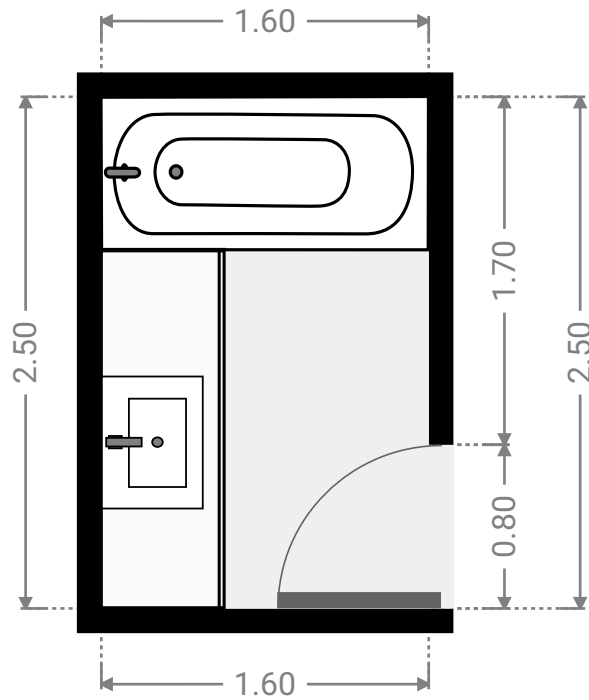
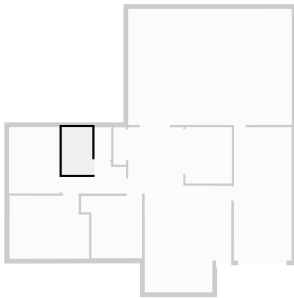
▼ **Bedroom**
Ground Floor

WIDTH: 2.67 m • LENGTH: 3.50 m
AREA: 9.34 m² • PERIMETER: 12.34 m



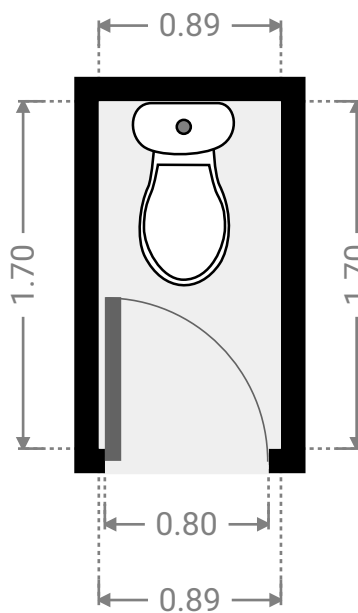
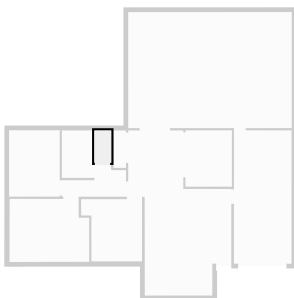
▼ **Bathroom**
Ground Floor

WIDTH: 1.60 m • LENGTH: 2.50 m
AREA: 4.00 m² • PERIMETER: 8.20 m



▼ **Toilet**
Ground Floor

WIDTH: 0.89 m • LENGTH: 1.70 m
AREA: 1.51 m² • PERIMETER: 5.17 m



▼ **Outdoor Area**
Ground Floor

WIDTH: 8.62 m • LENGTH: 6.12 m
AREA: 52.78 m² • PERIMETER: 29.49 m

