

23 CRICK Street

Ground Floor



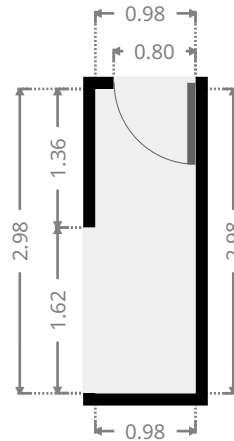
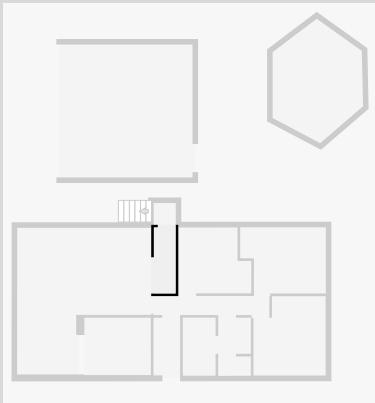
THIS FLOORPLAN IS PROVIDED WITHOUT WARRANTY OF ANY KIND. SENSOPIA DISCLAIMS ANY WARRANTY INCLUDING, WITHOUT LIMITATION, SATISFACTORY QUALITY OR ACCURACY OF DIMENSIONS.



23 CRICK Street

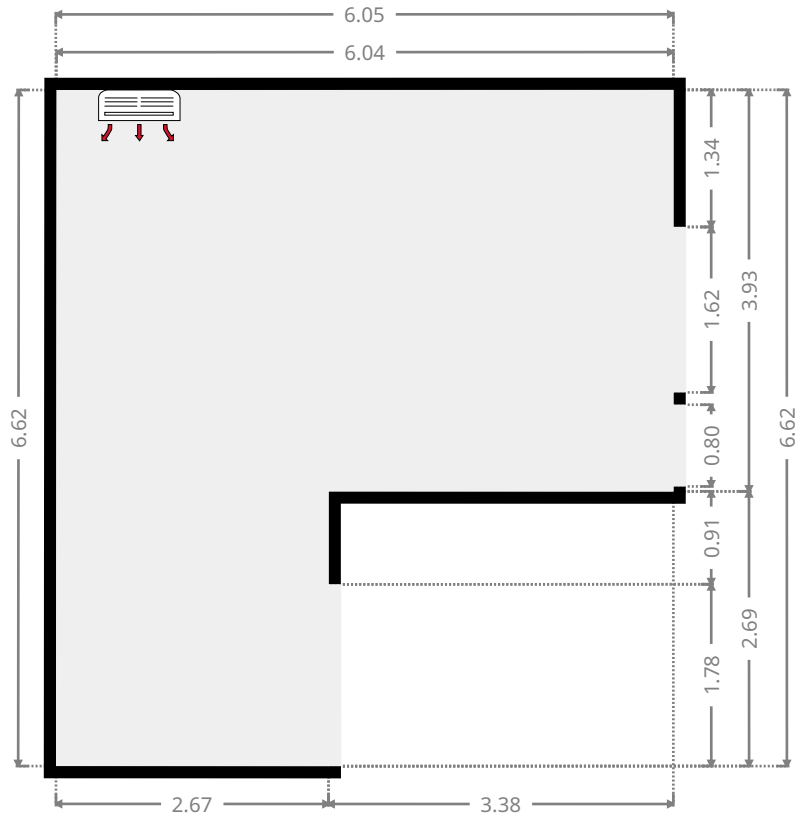
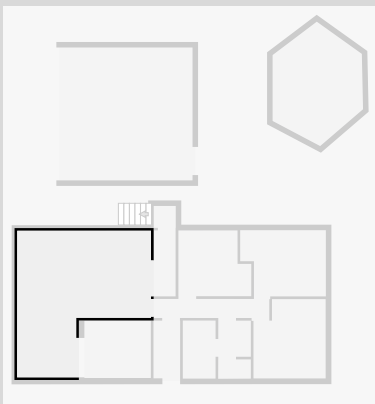
Hall

Width: 0.98 m
 Length: 2.98 m
 Area: 2.92 m²
 Perimeter: 7.92 m



Living Room

Width: 6.05 m
 Length: 6.62 m
 Area: 30.93 m²
 Perimeter: 25.33 m

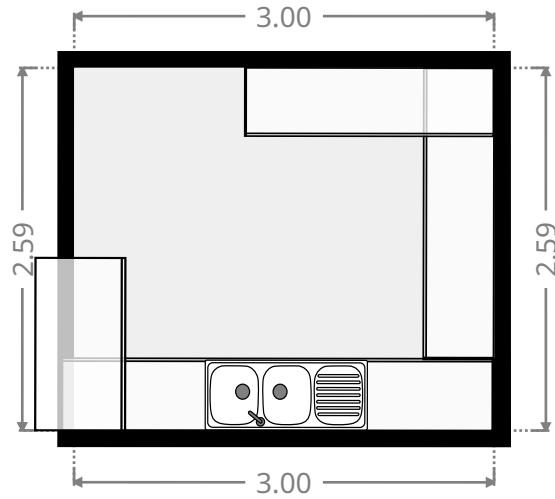
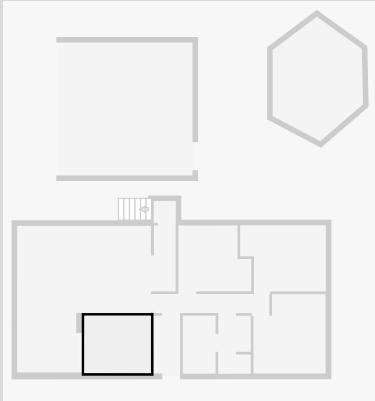


THIS FLOORPLAN IS PROVIDED WITHOUT WARRANTY OF ANY KIND. SENSOPIA DISCLAIMS ANY WARRANTY INCLUDING, WITHOUT LIMITATION, SATISFACTORY QUALITY OR ACCURACY OF DIMENSIONS.

23 CRICK Street

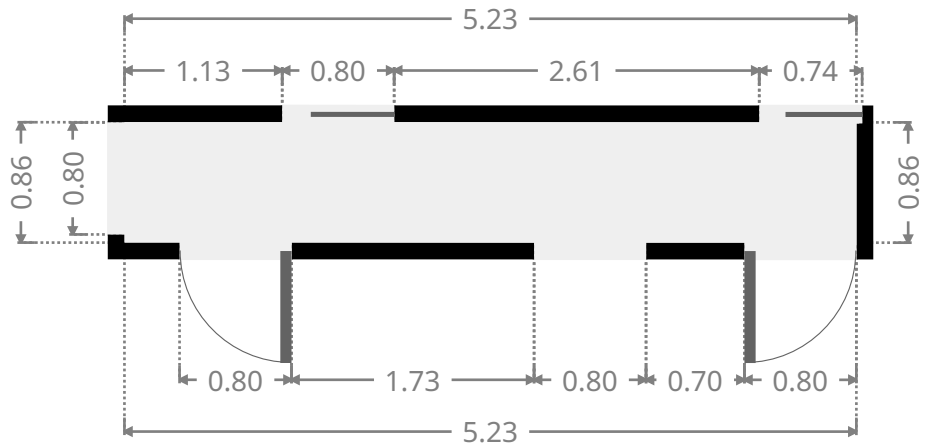
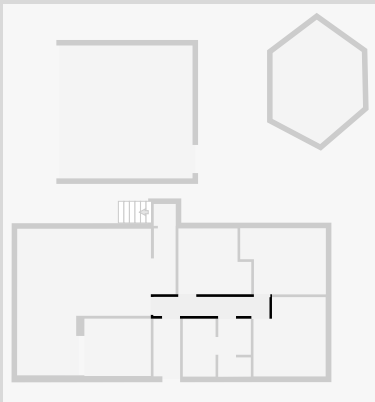
Kitchen

Width: 2.59 m
Length: 3.00 m
Area: 7.77 m²
Perimeter: 11.18 m



Hall

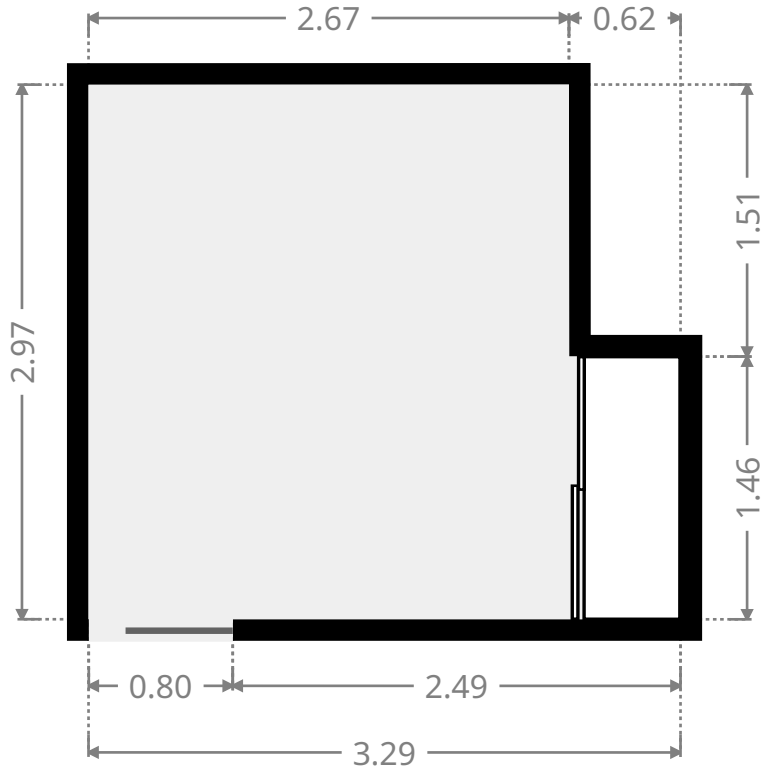
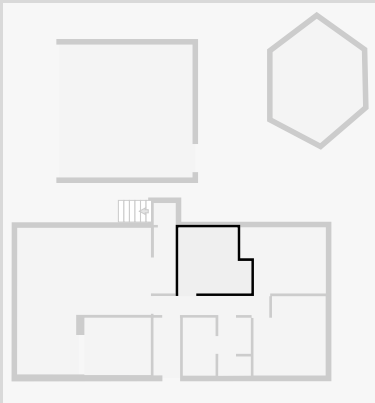
Width: 0.86 m
Length: 5.23 m
Area: 4.50 m²
Perimeter: 12.18 m



23 CRICK Street

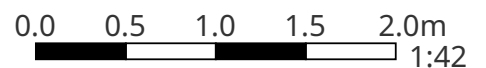
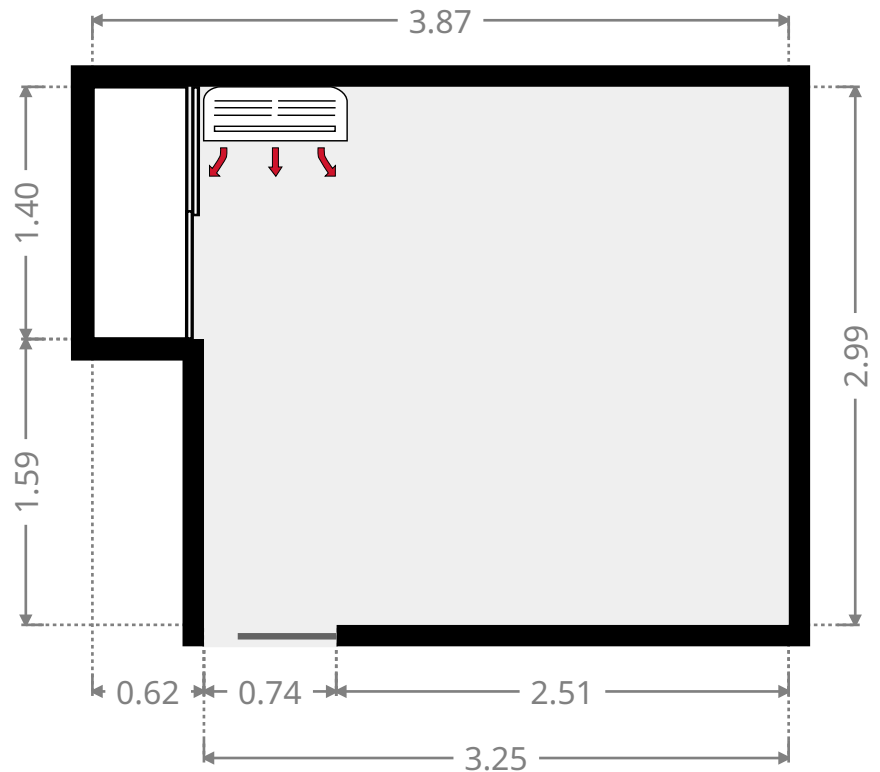
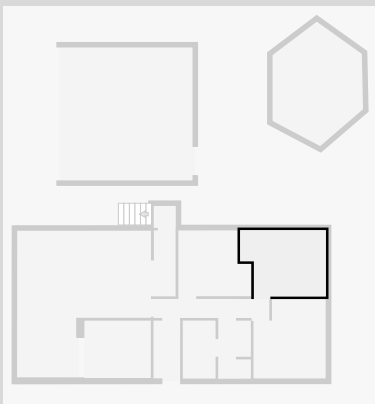
Bedroom

Width: 2.97 m
 Length: 3.29 m
 Area: 8.84 m²
 Perimeter: 12.52 m



Bedroom

Width: 2.99 m
 Length: 3.87 m
 Area: 10.59 m²
 Perimeter: 13.72 m

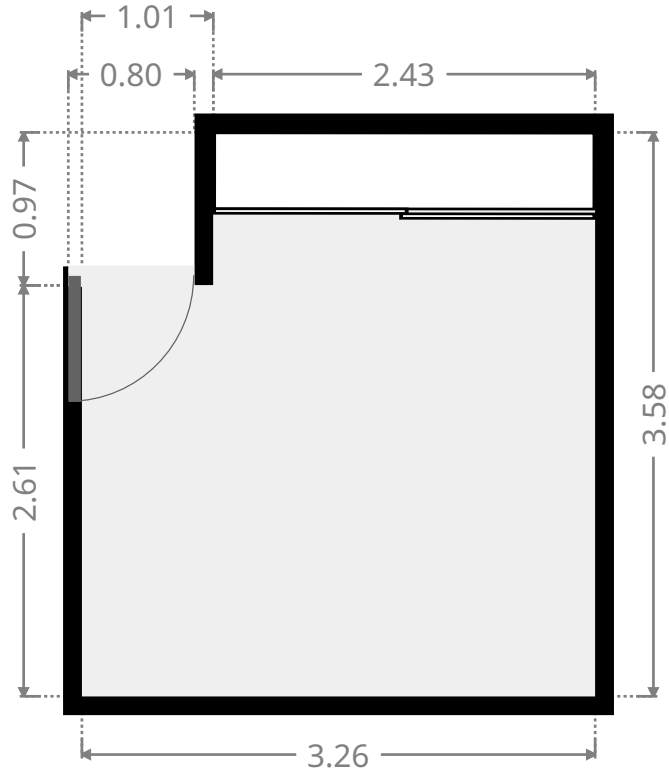
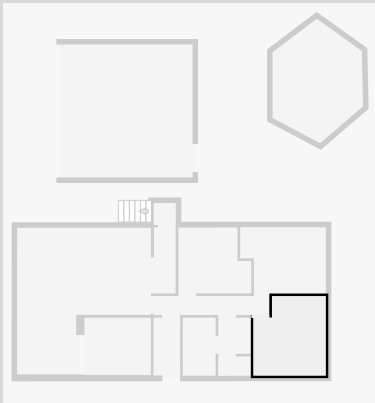


THIS FLOORPLAN IS PROVIDED WITHOUT WARRANTY OF ANY KIND. SENSOPIA DISCLAIMS ANY WARRANTY INCLUDING, WITHOUT LIMITATION, SATISFACTORY QUALITY OR ACCURACY OF DIMENSIONS.

23 CRICK Street

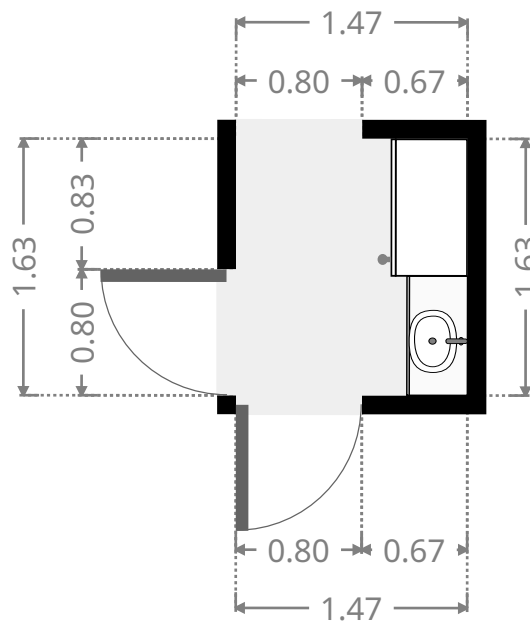
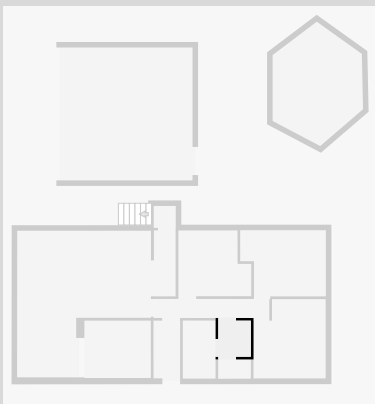
Bedroom

Width: 3.26 m
 Length: 3.58 m
 Area: 10.86 m²
 Perimeter: 13.68 m



Other

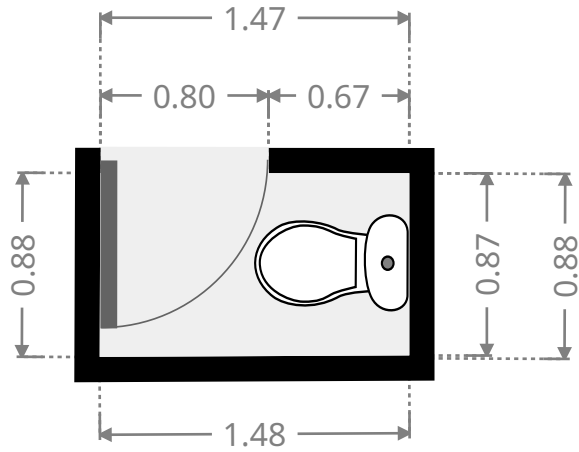
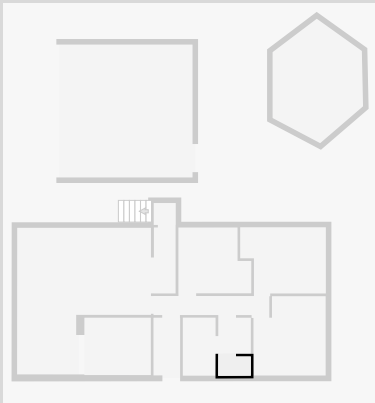
Width: 1.47 m
 Length: 1.63 m
 Area: 2.40 m²
 Perimeter: 6.20 m



23 CRICK Street

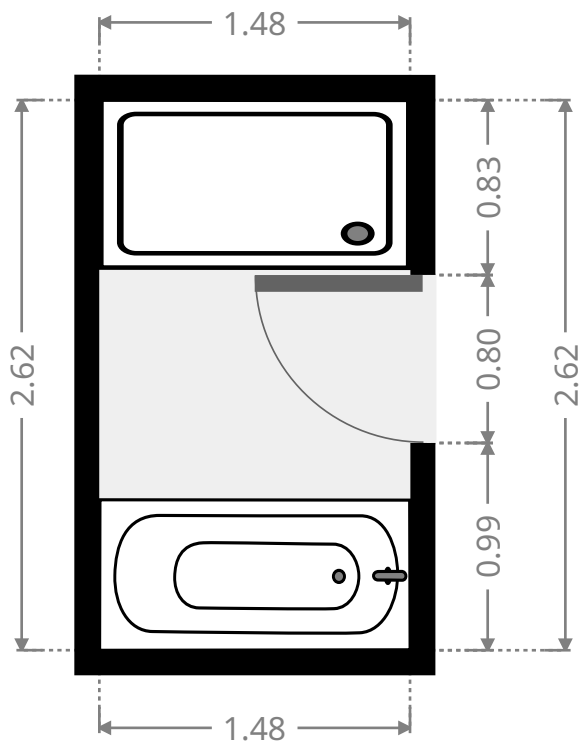
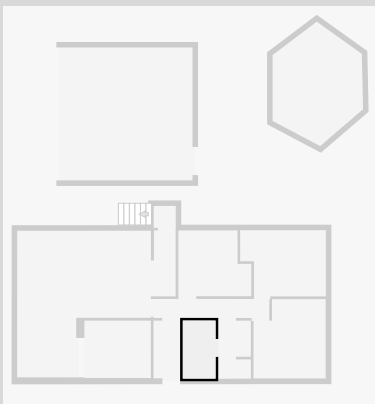
Toilet / Half Bath

Width: 0.88 m
Length: 1.48 m
Area: 1.29 m²
Perimeter: 4.69 m



Bathroom

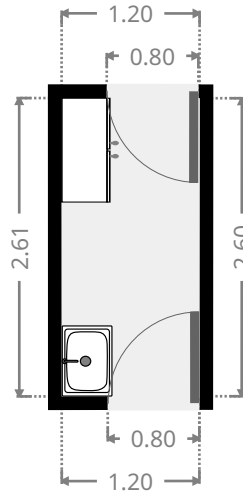
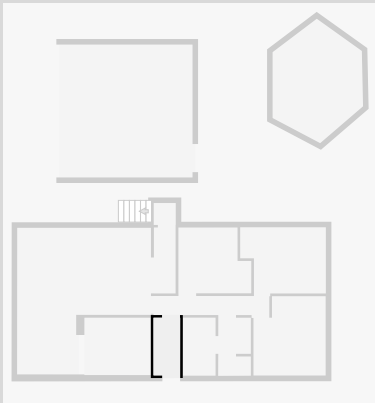
Width: 1.48 m
Length: 2.62 m
Area: 3.88 m²
Perimeter: 8.20 m



23 CRICK Street

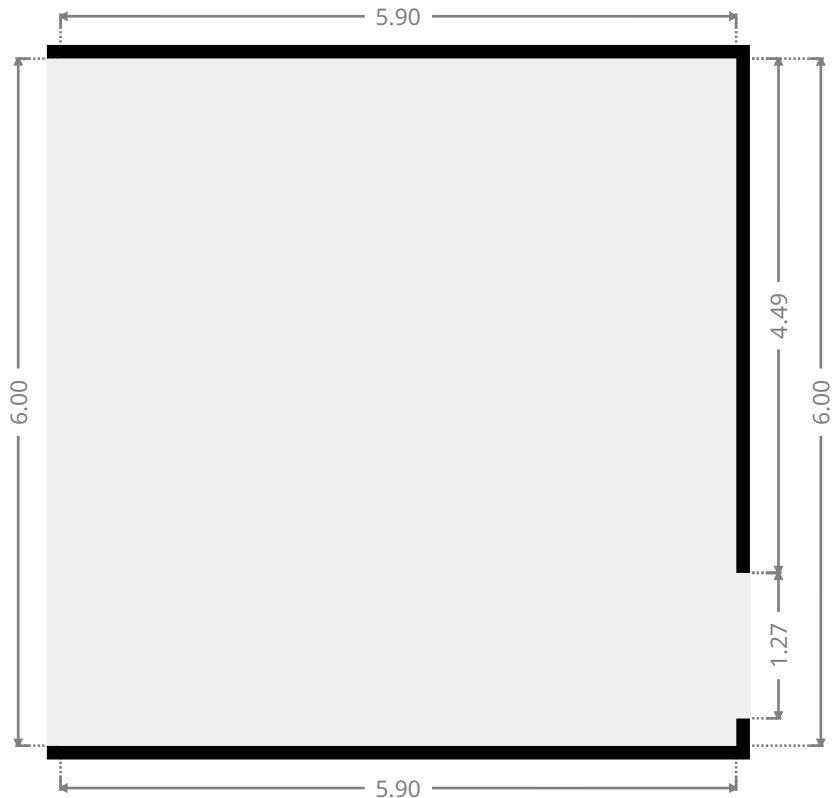
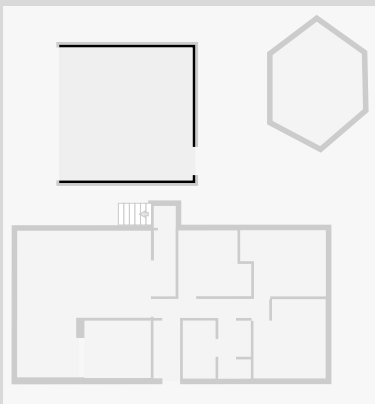
Bathroom

Width: 1.20 m
Length: 2.61 m
Area: 3.13 m²
Perimeter: 7.61 m



Garage

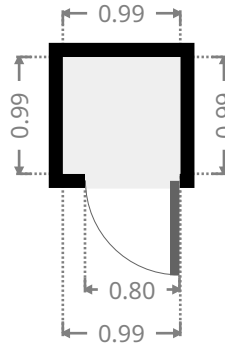
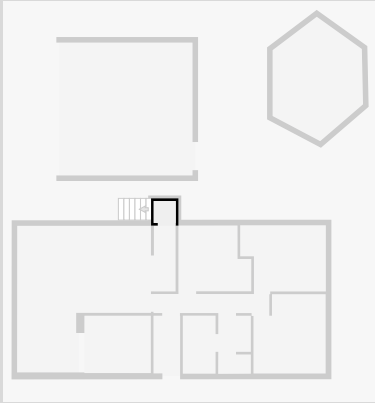
Width: 5.90 m
Length: 6.00 m
Area: 35.40 m²
Perimeter: 23.80 m



23 CRICK Street

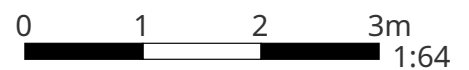
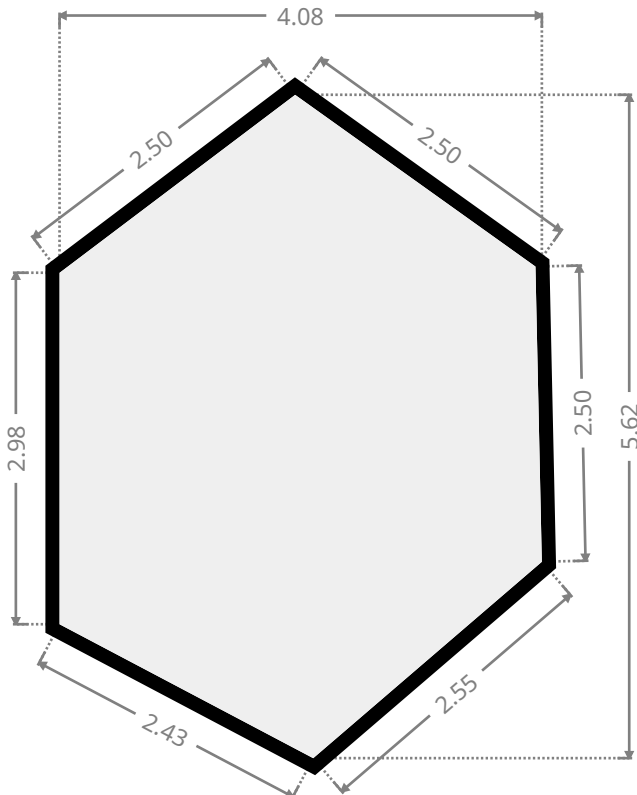
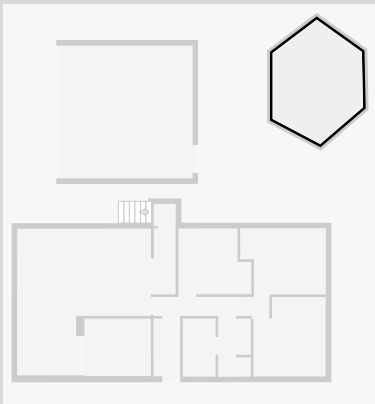
Hall

Width: 0.99 m
Length: 0.99 m
Area: 0.98 m²
Perimeter: 3.97 m



Other

Width: 4.08 m
Length: 5.62 m
Area: 16.99 m²
Perimeter: 15.46 m



THIS FLOORPLAN IS PROVIDED WITHOUT WARRANTY OF ANY KIND. SENSOPIA DISCLAIMS ANY WARRANTY INCLUDING, WITHOUT LIMITATION, SATISFACTORY QUALITY OR ACCURACY OF DIMENSIONS.