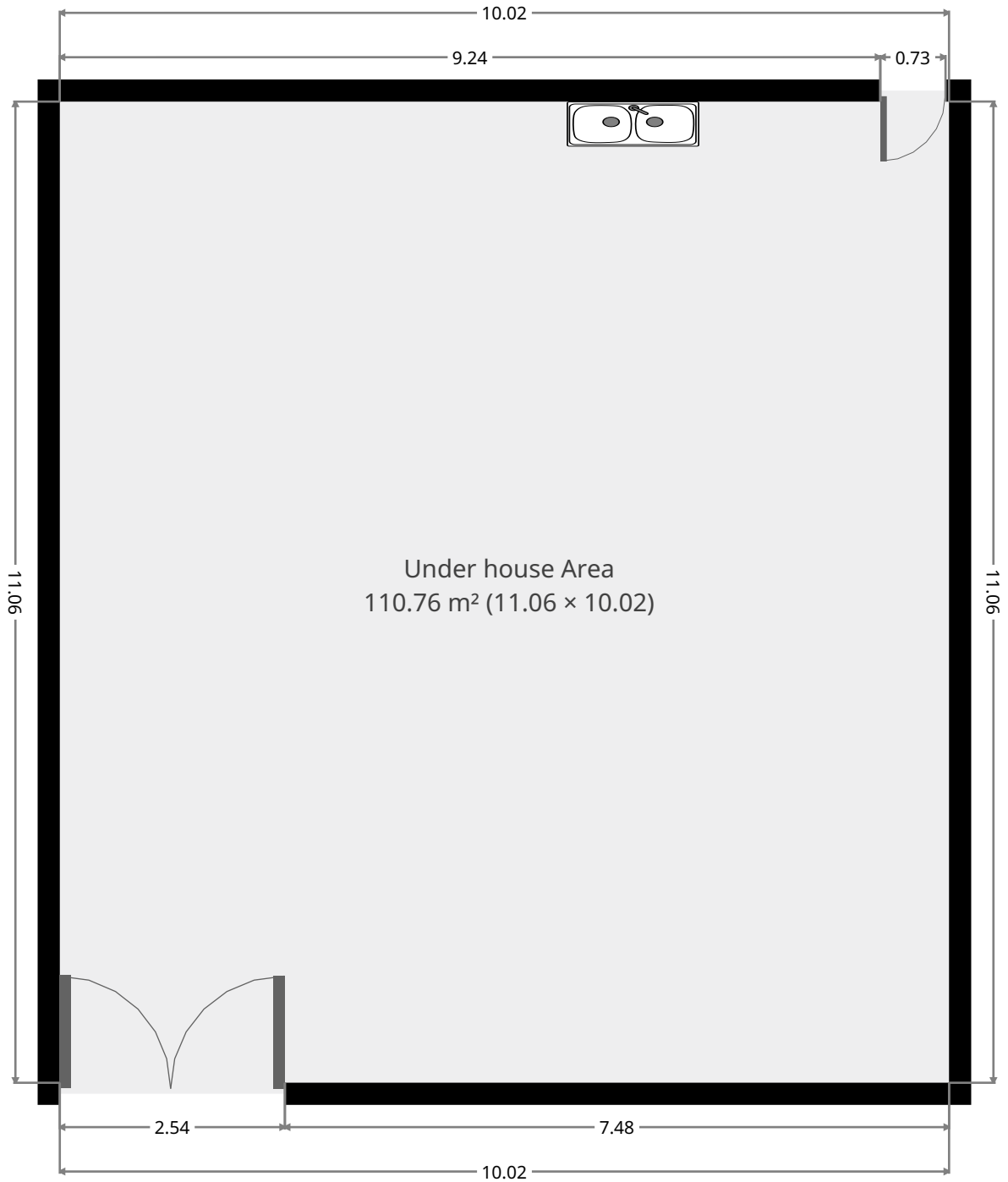


223 Skardon Street

Ground Floor



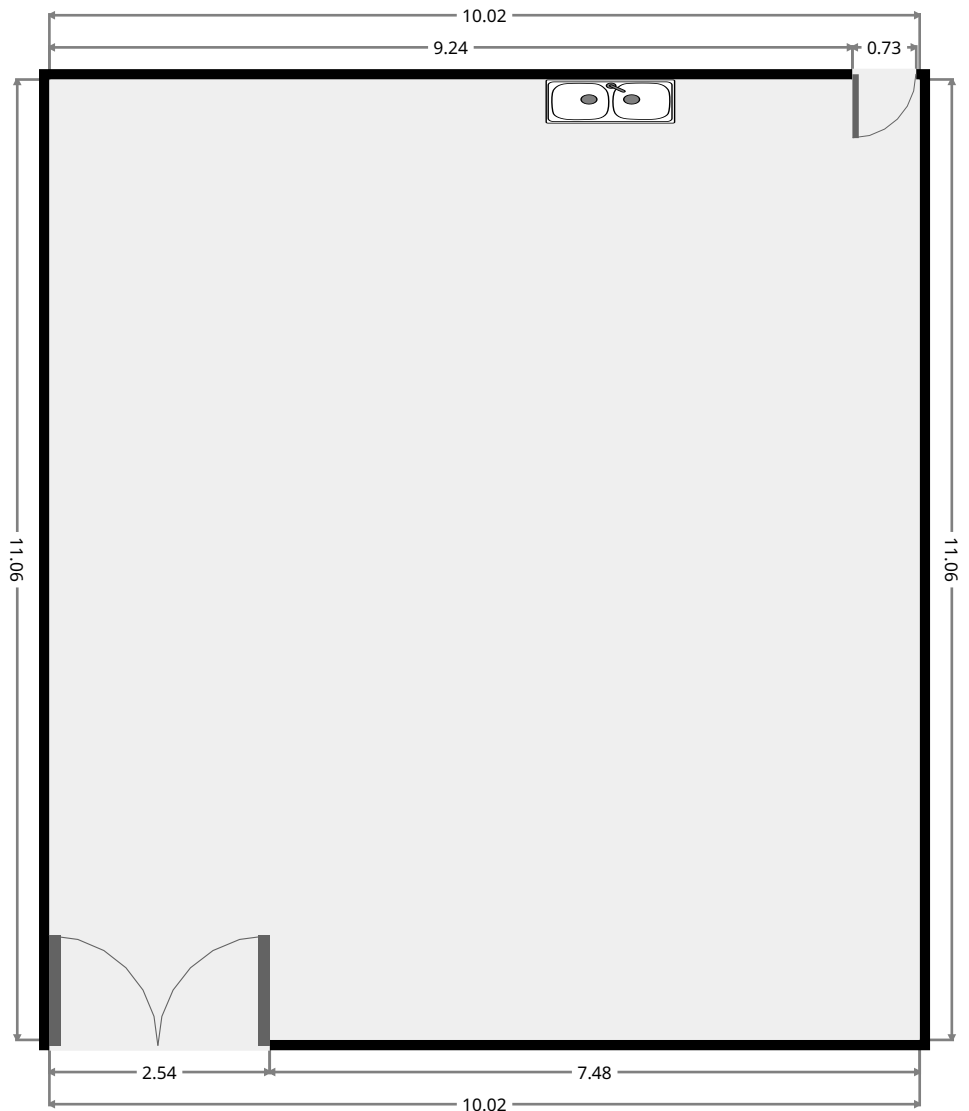
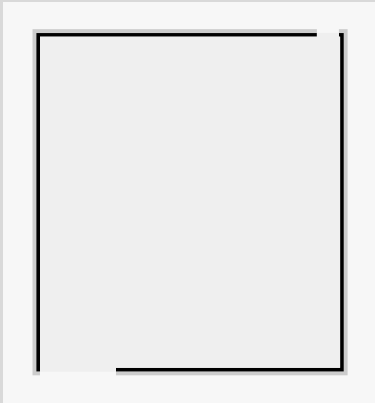
THIS FLOORPLAN IS PROVIDED WITHOUT WARRANTY OF ANY KIND. SENSOPIA DISCLAIMS ANY WARRANTY INCLUDING, WITHOUT LIMITATION, SATISFACTORY QUALITY OR ACCURACY OF DIMENSIONS.



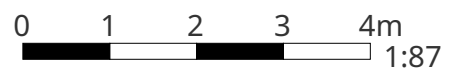
223 Skardon Street

Under house Area

Width: 10.02 m
Length: 11.06 m
Area: 110.76 m²
Perimeter: 42.15 m

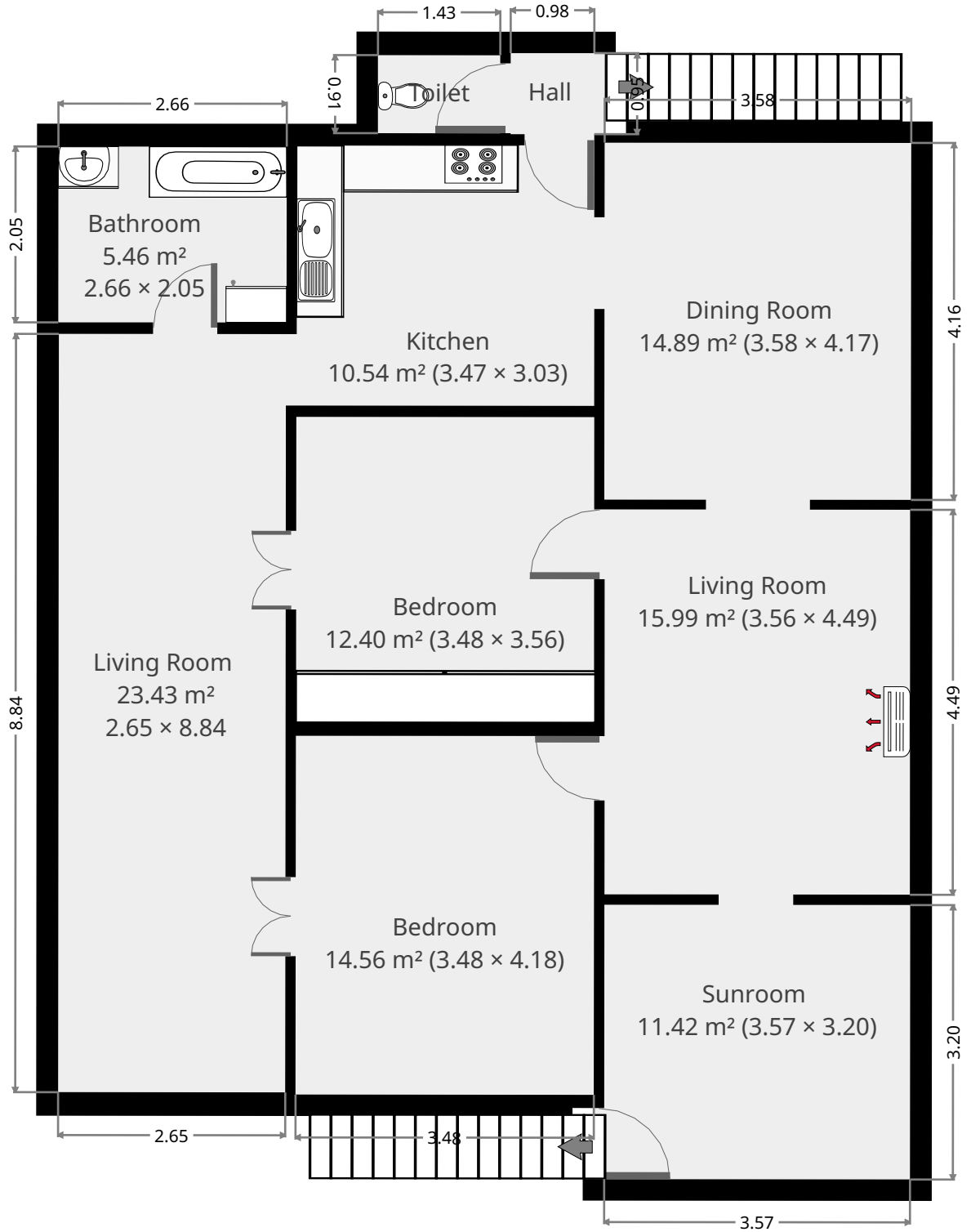


THIS FLOORPLAN IS PROVIDED WITHOUT WARRANTY OF ANY KIND. SENSOPIA DISCLAIMS ANY WARRANTY INCLUDING, WITHOUT LIMITATION, SATISFACTORY QUALITY OR ACCURACY OF DIMENSIONS.



223 Skardon Street

1st Floor

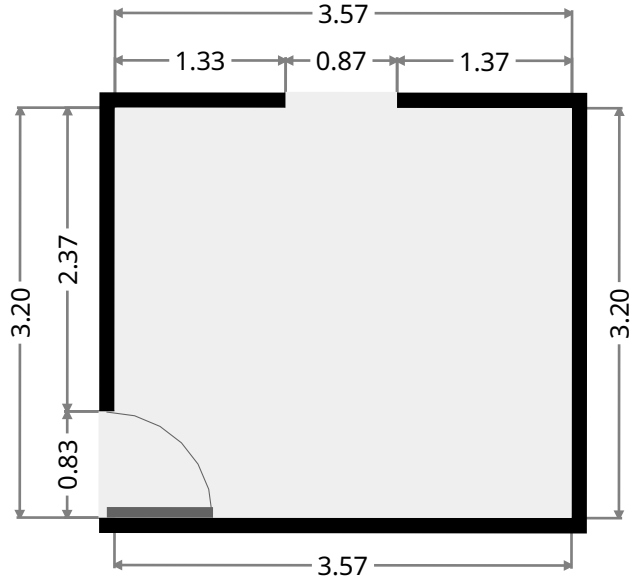
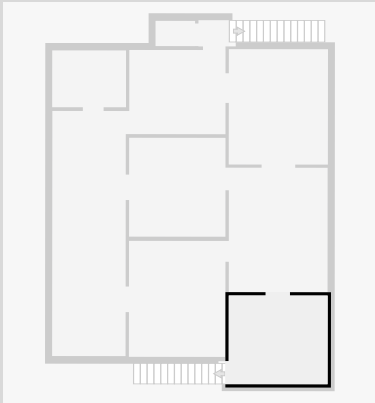


THIS FLOORPLAN IS PROVIDED WITHOUT WARRANTY OF ANY KIND. SENSOPIA DISCLAIMS ANY WARRANTY INCLUDING, WITHOUT LIMITATION, SATISFACTORY QUALITY OR ACCURACY OF DIMENSIONS.

223 Skardon Street

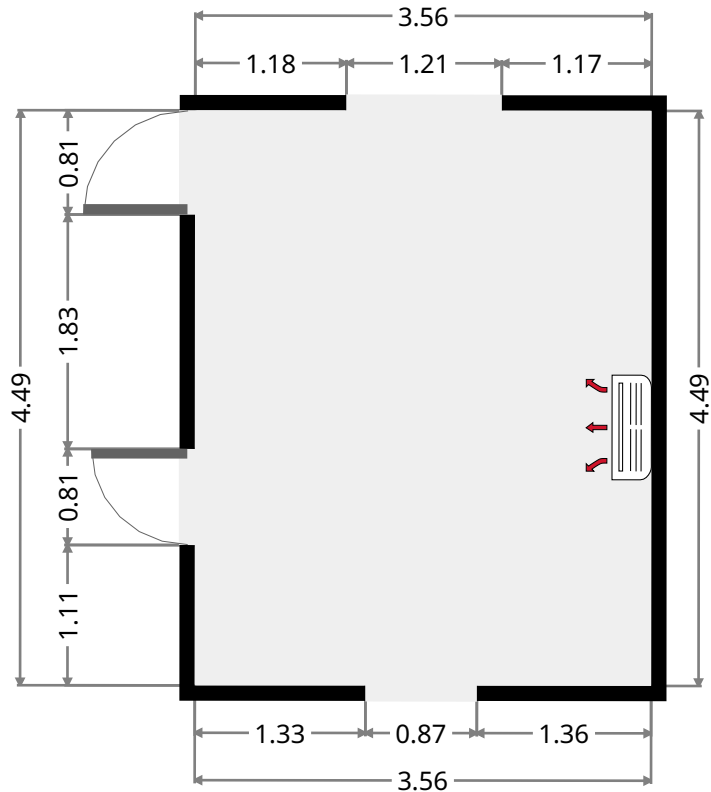
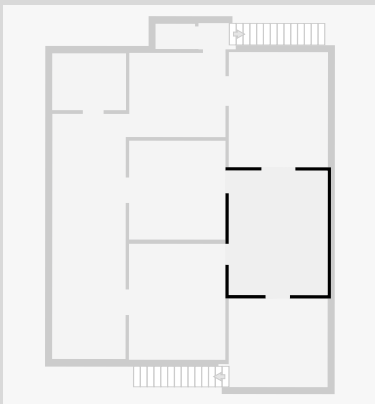
Sunroom

Width: 3.20 m
Length: 3.57 m
Area: 11.42 m²
Perimeter: 13.54 m

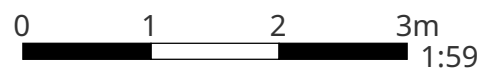


Living Room

Width: 3.56 m
Length: 4.49 m
Area: 15.99 m²
Perimeter: 16.10 m



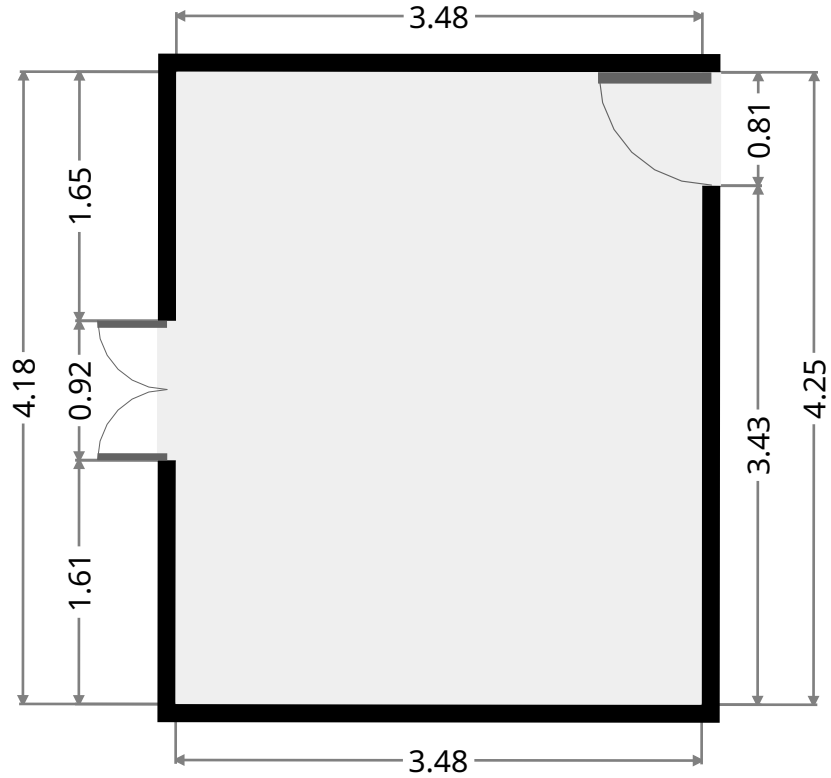
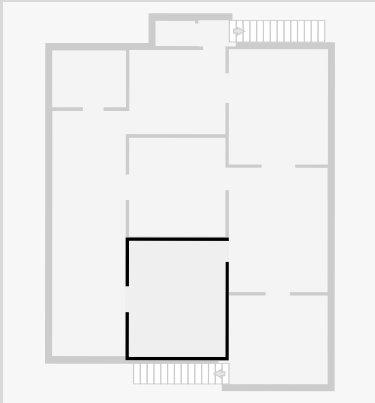
THIS FLOORPLAN IS PROVIDED WITHOUT WARRANTY OF ANY KIND. SENSOPIA DISCLAIMS ANY WARRANTY INCLUDING, WITHOUT LIMITATION, SATISFACTORY QUALITY OR ACCURACY OF DIMENSIONS.



223 Skardon Street

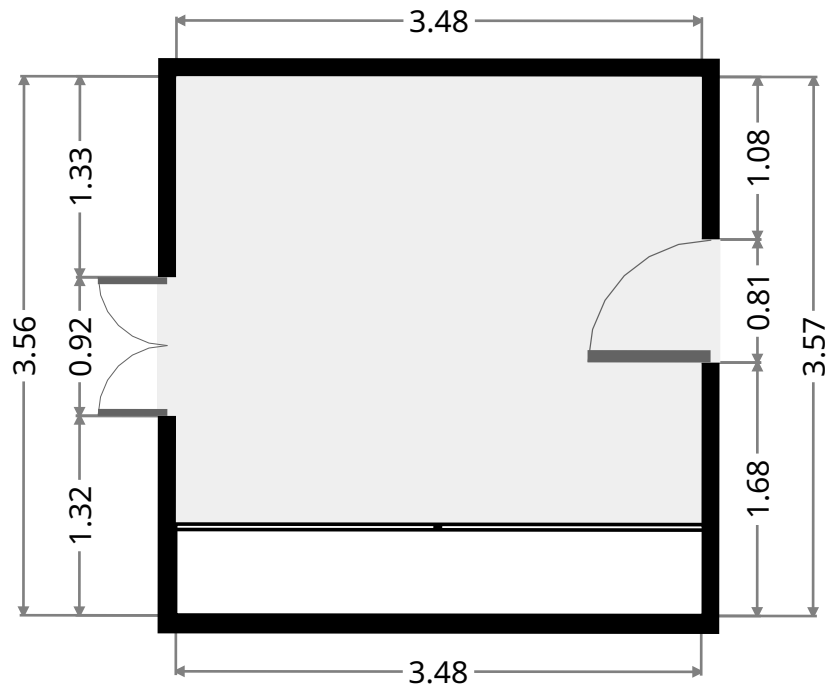
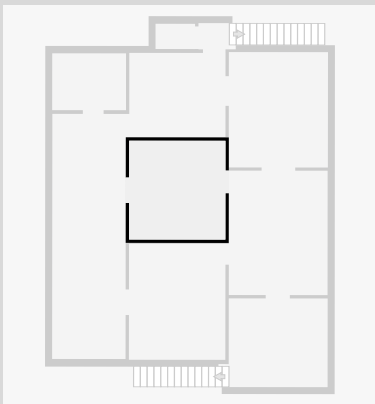
Bedroom

Width: 3.48 m
 Length: 4.18 m
 Area: 14.56 m²
 Perimeter: 15.33 m



Bedroom

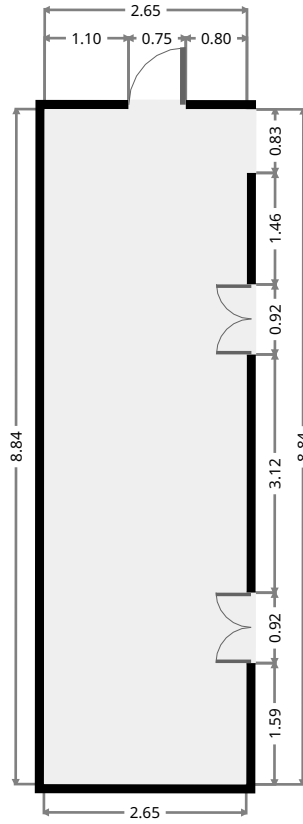
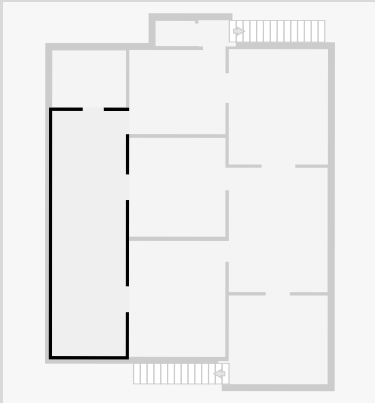
Width: 3.48 m
 Length: 3.56 m
 Area: 12.40 m²
 Perimeter: 14.08 m



223 Skardon Street

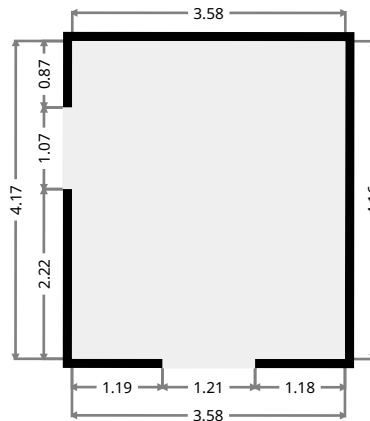
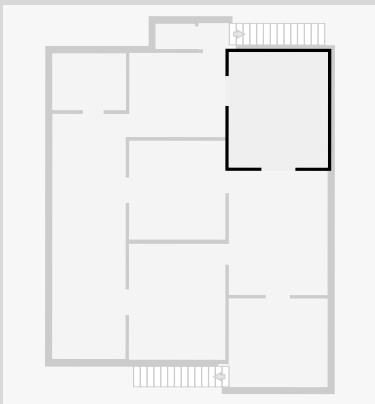
Living Room

Width: 2.65 m
Length: 8.84 m
Area: 23.43 m²
Perimeter: 22.98 m



Dining Room

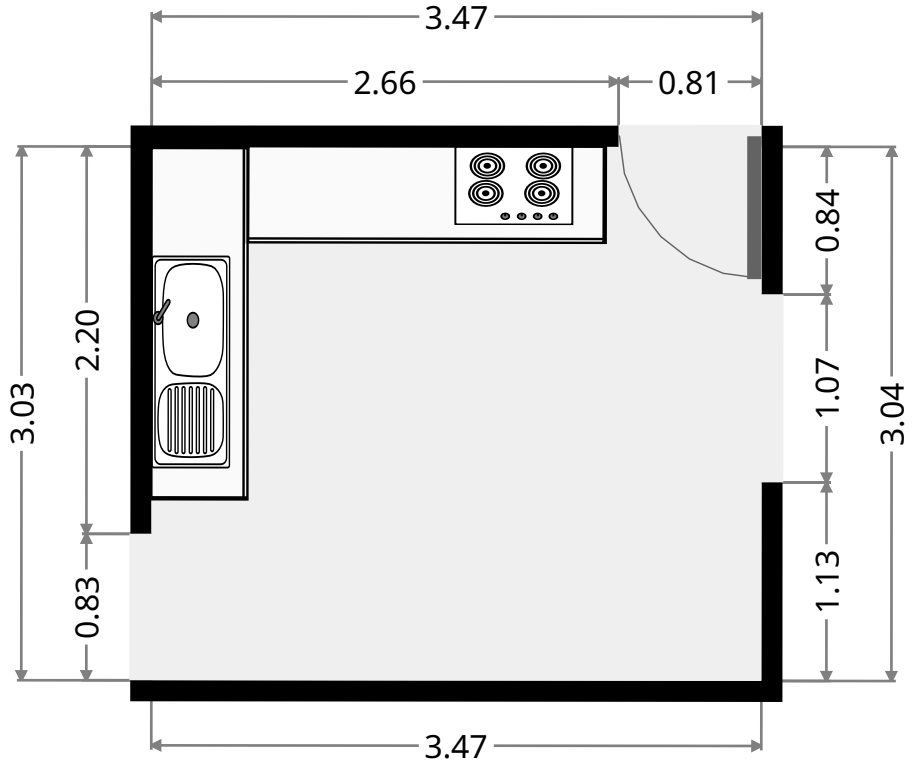
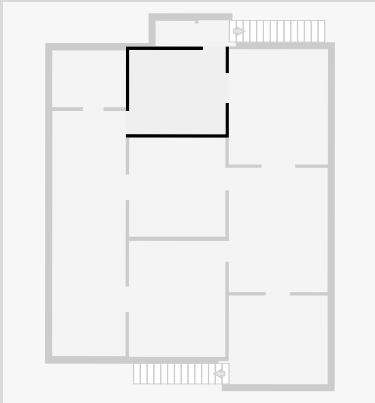
Width: 3.58 m
Length: 4.17 m
Area: 14.89 m²
Perimeter: 15.48 m



223 Skardon Street

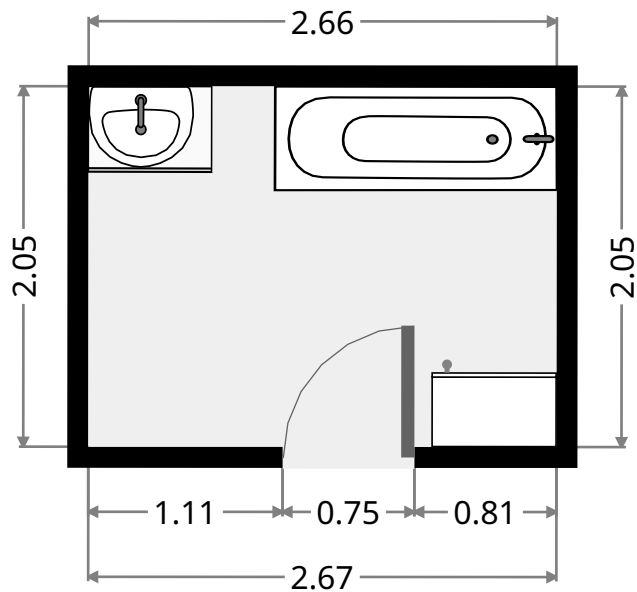
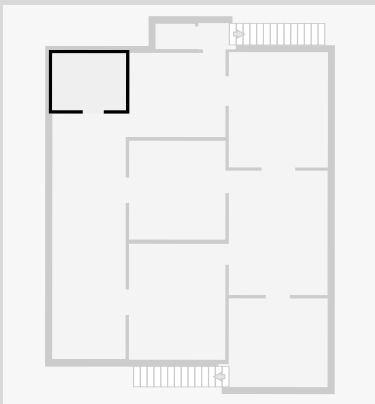
Kitchen

Width: 3.03 m
Length: 3.47 m
Area: 10.54 m²
Perimeter: 13.02 m



Bathroom

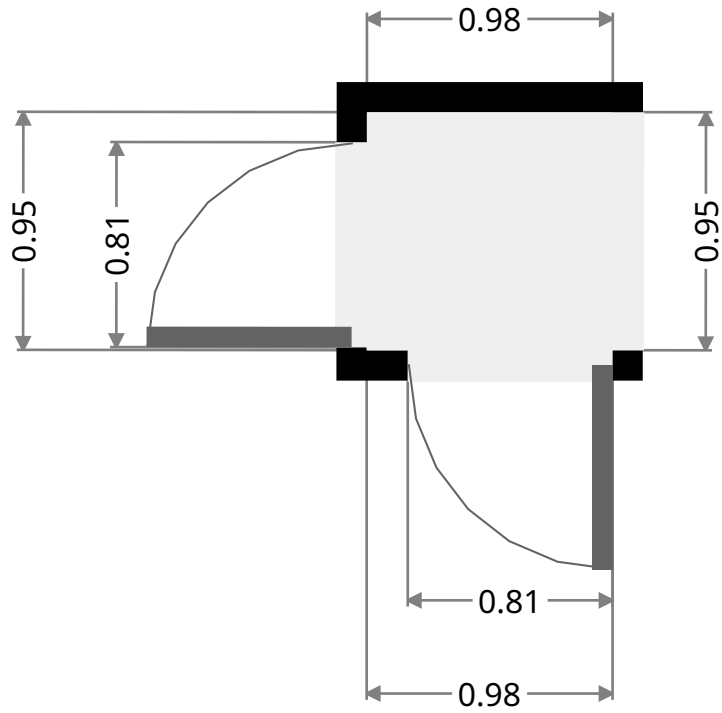
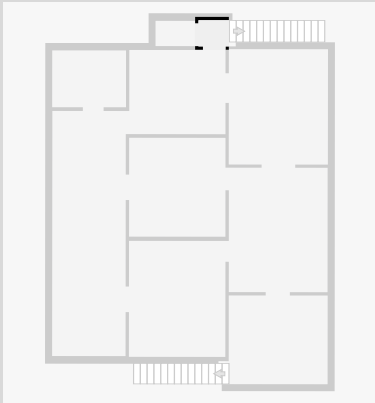
Width: 2.05 m
Length: 2.66 m
Area: 5.46 m²
Perimeter: 9.43 m



223 Skardon Street

Hall

Width: 0.94 m
Length: 0.98 m
Area: 0.92 m²
Perimeter: 3.84 m



Toilet / Half Bath

Width: 0.91 m
Length: 1.43 m
Area: 1.30 m²
Perimeter: 4.67 m

