

22 Turner Court

SUBMITTED BY

Ray White Rockhampton Casey
stockers@cqoz.com

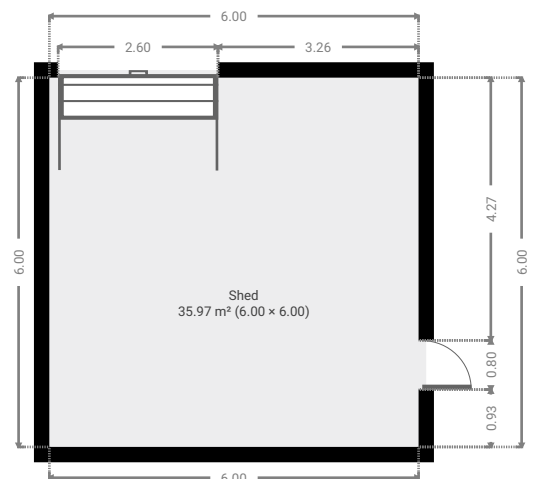
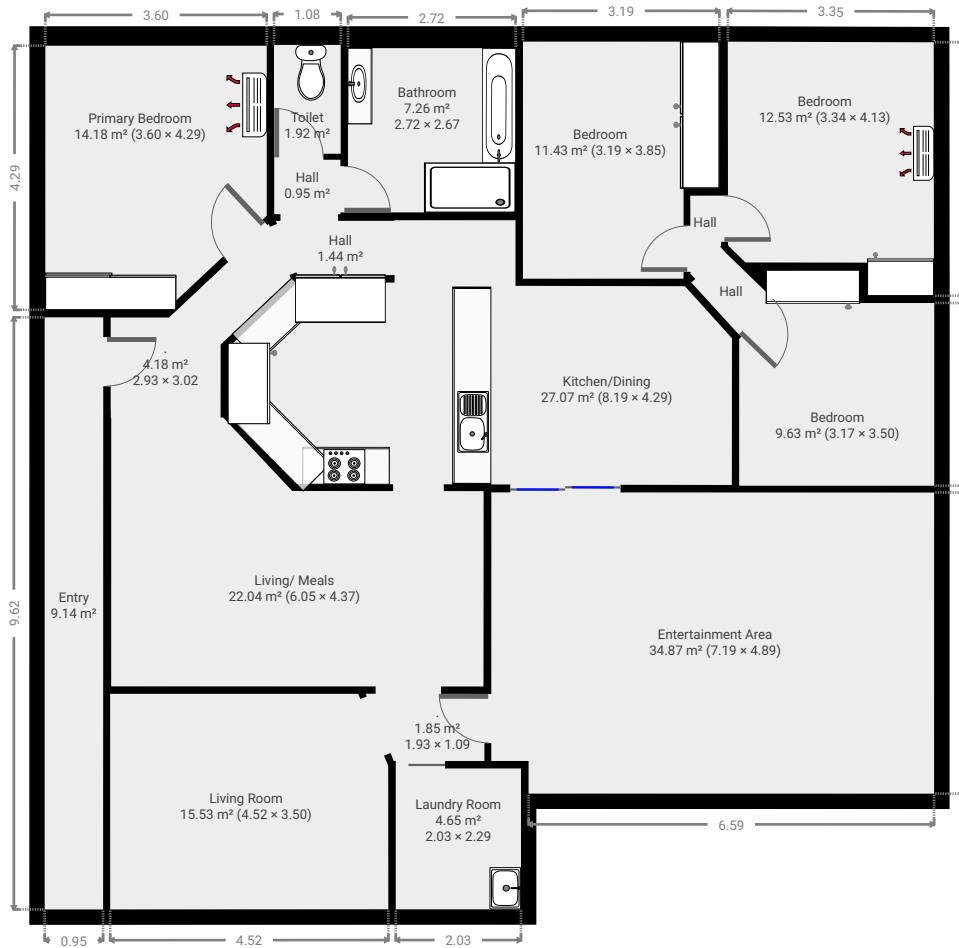
CREATED ON

2017-01-24

Floors

1

▼ Ground Floor



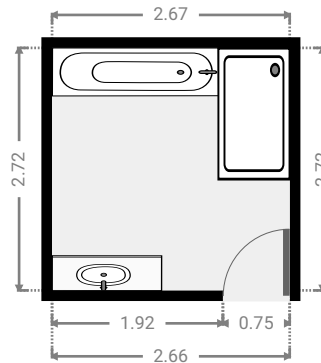
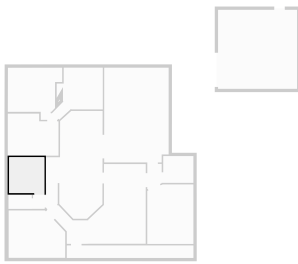
22 Turner Court

FLOORS: 1



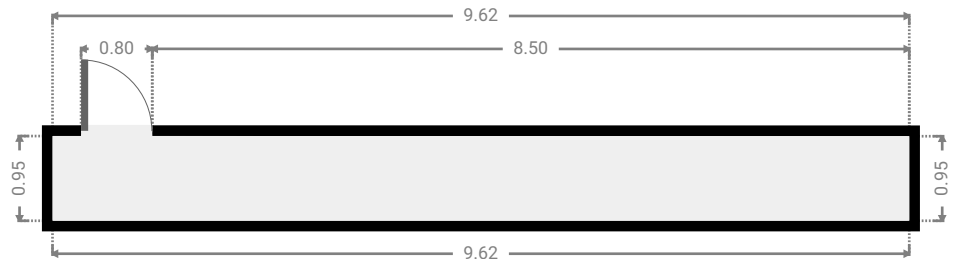
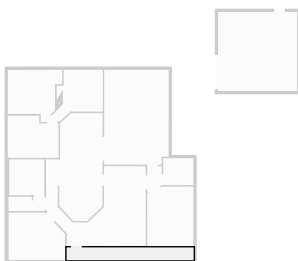
▼ Bathroom Ground Floor

WIDTH: 2.67 m • LENGTH: 2.72 m
AREA: 7.26 m² • PERIMETER: 10.78 m



▼ Entry Ground Floor

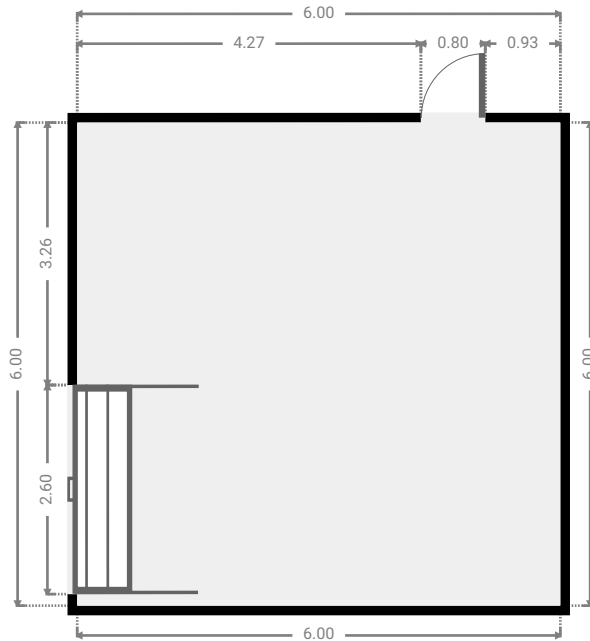
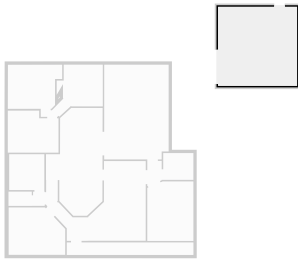
WIDTH: 9.62 m • LENGTH: 0.95 m
AREA: 9.14 m² • PERIMETER: 21.14 m



FLOORS: 1

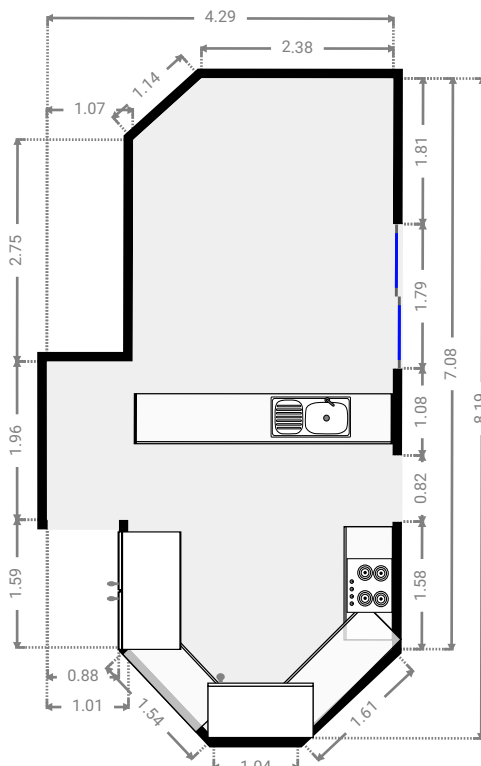
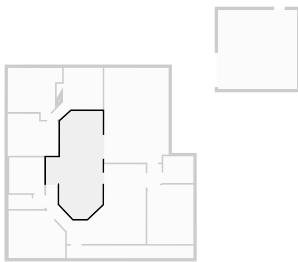
▼ Shed Ground Floor

WIDTH: 6.00 m • LENGTH: 6.00 m
AREA: 35.97 m² • PERIMETER: 23.99 m



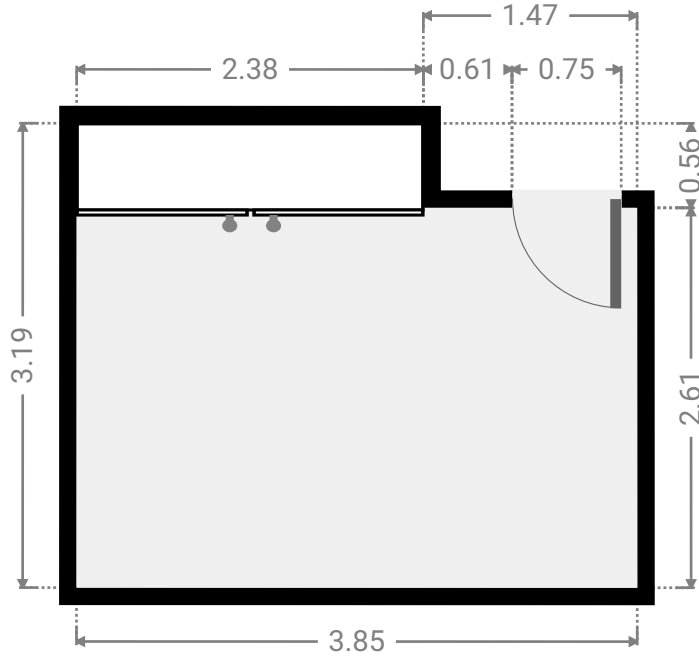
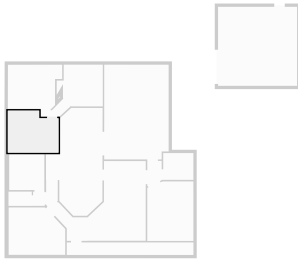
▼ Kitchen/Dining Ground Floor

WIDTH: 4.29 m • LENGTH: 8.19 m
AREA: 27.07 m² • PERIMETER: 23.18 m



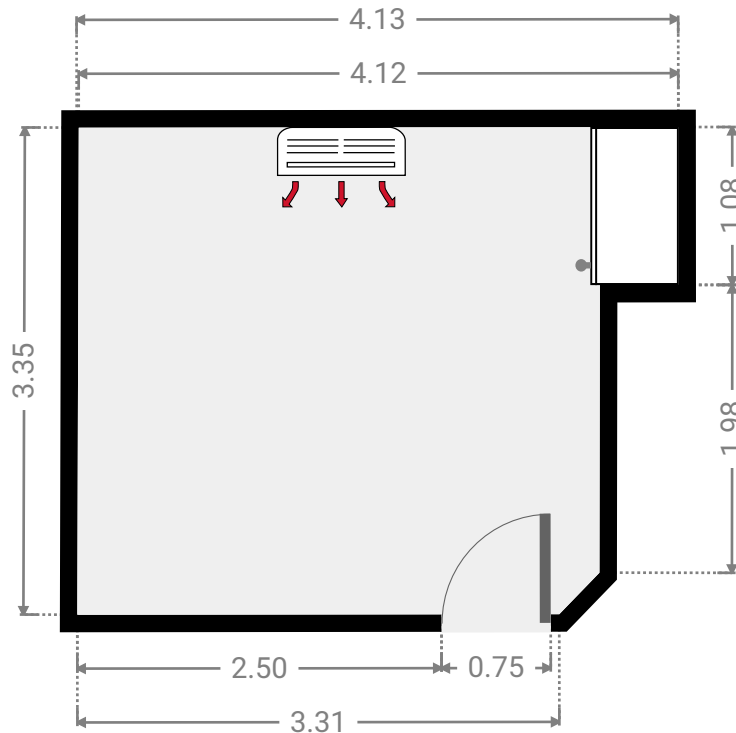
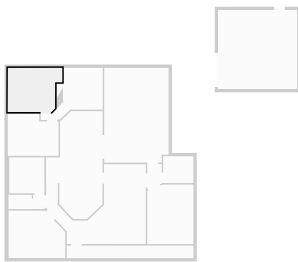
▼ Bedroom Ground Floor

WIDTH: 3.85 m • LENGTH: 3.19 m
AREA: 11.43 m² • PERIMETER: 14.08 m



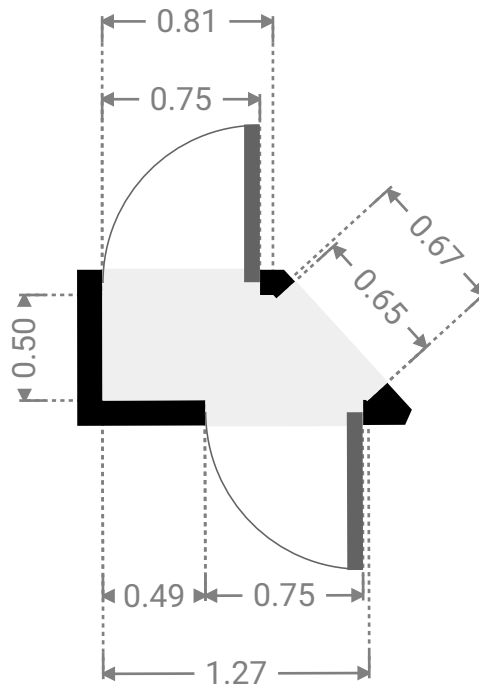
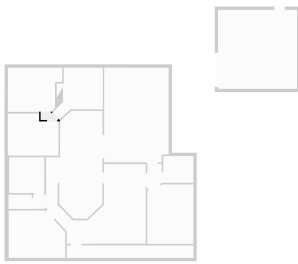
▼ Bedroom Ground Floor

WIDTH: 4.13 m • LENGTH: 3.34 m
AREA: 12.53 m² • PERIMETER: 14.77 m



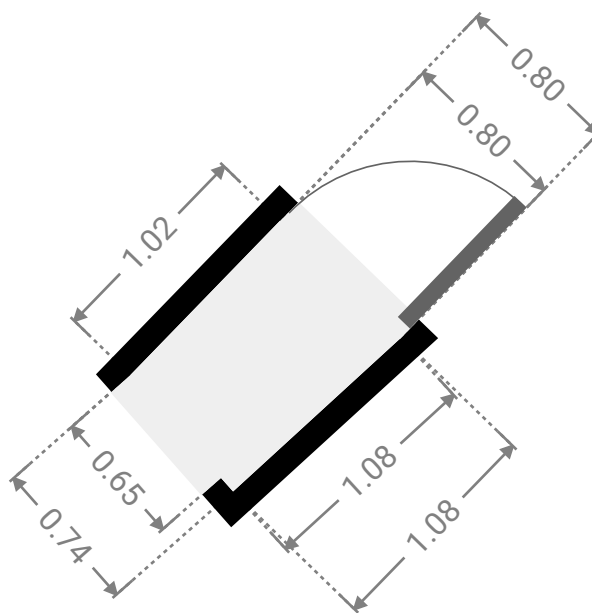
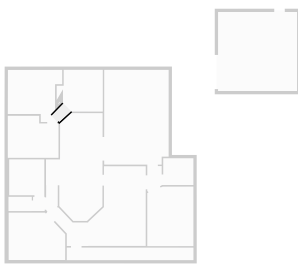
▼ **Hall**
Ground Floor

WIDTH: 1.27 m • LENGTH: 0.50 m
AREA: 0.52 m² • PERIMETER: 3.25 m



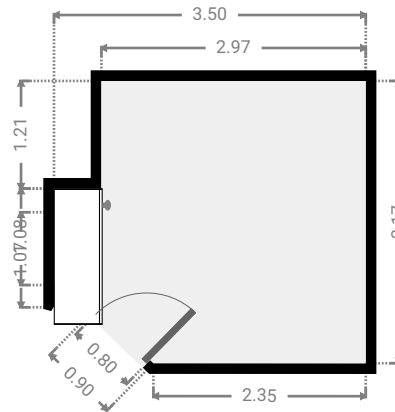
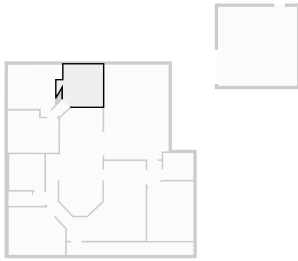
▼ **Hall**
Ground Floor

WIDTH: 0.80 m • LENGTH: 1.08 m
AREA: 0.81 m² • PERIMETER: 3.64 m



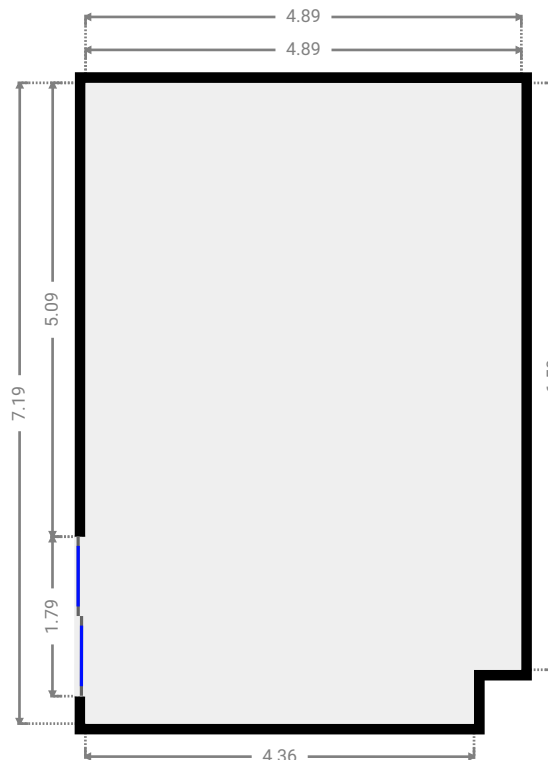
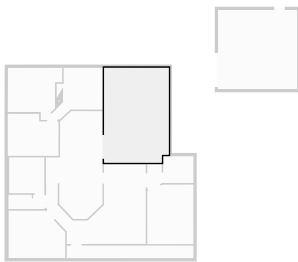
▼ Bedroom Ground Floor

WIDTH: 3.50 m • LENGTH: 3.17 m • CEILING HEIGHT: 2.17 m
AREA: 9.63 m² • PERIMETER: 14.25 m



▼ Entertainment Area Ground Floor

WIDTH: 4.89 m • LENGTH: 7.19 m
AREA: 34.87 m² • PERIMETER: 24.17 m

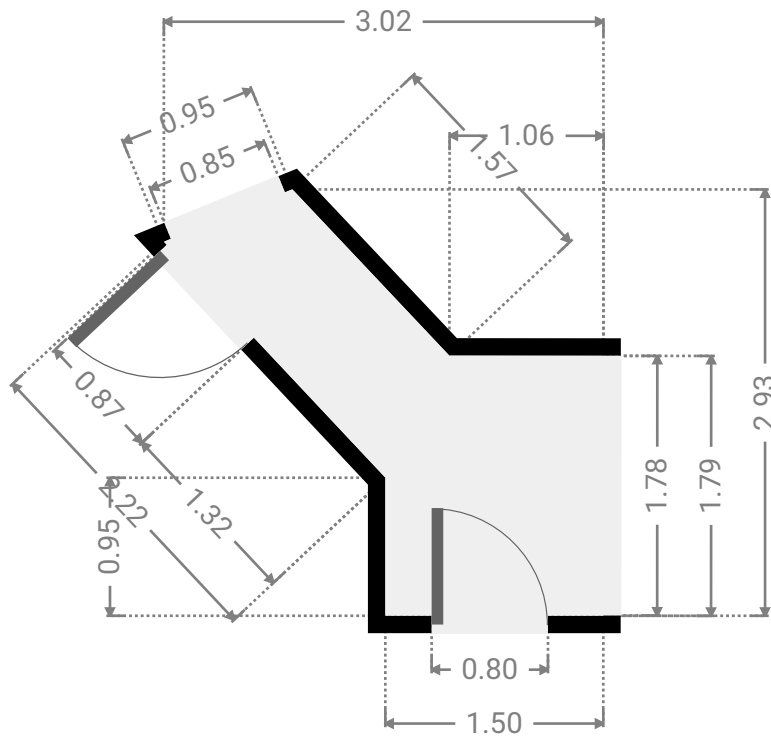
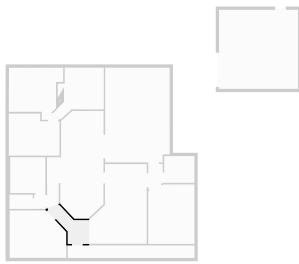


22 Turner Court

FLOORS: 1

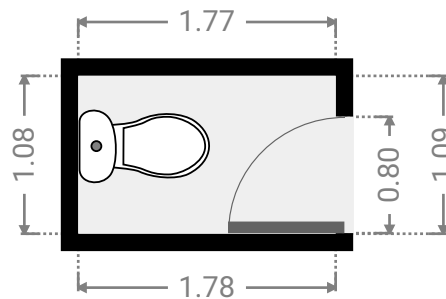
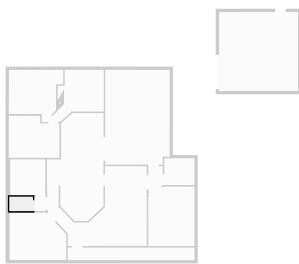
▼ Ground Floor

WIDTH: 3.02 m • LENGTH: 2.93 m • CEILING HEIGHT: 2.17 m
AREA: 4.18 m² • PERIMETER: 10.03 m



▼ Toilet Ground Floor

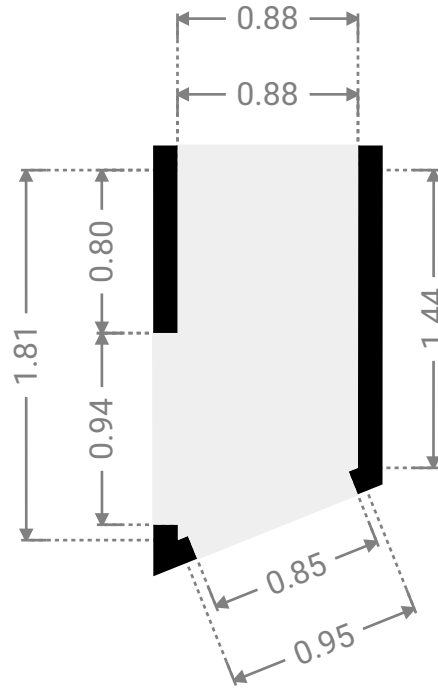
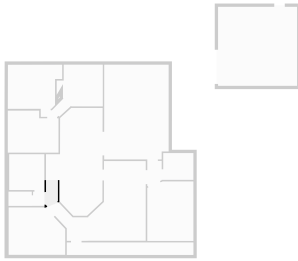
WIDTH: 1.77 m • LENGTH: 1.09 m
AREA: 1.92 m² • PERIMETER: 5.70 m



FLOORS: 1

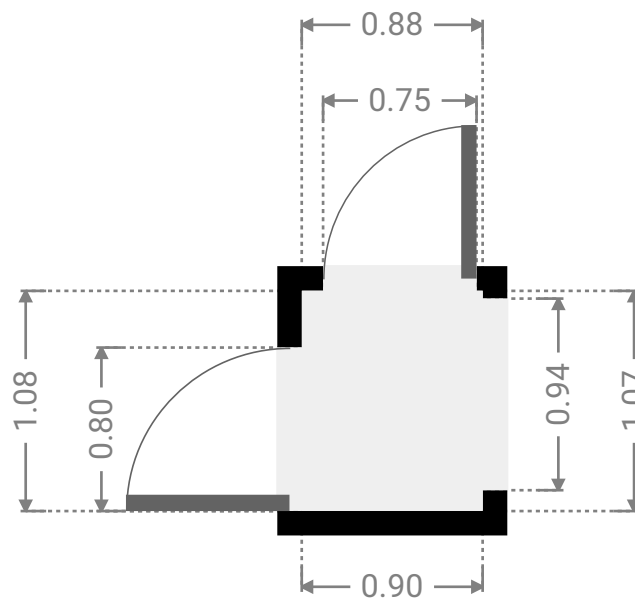
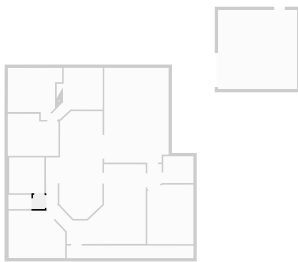
▼ **Hall**
Ground Floor

WIDTH: 0.88 m • LENGTH: 1.81 m
AREA: 1.44 m² • PERIMETER: 5.09 m



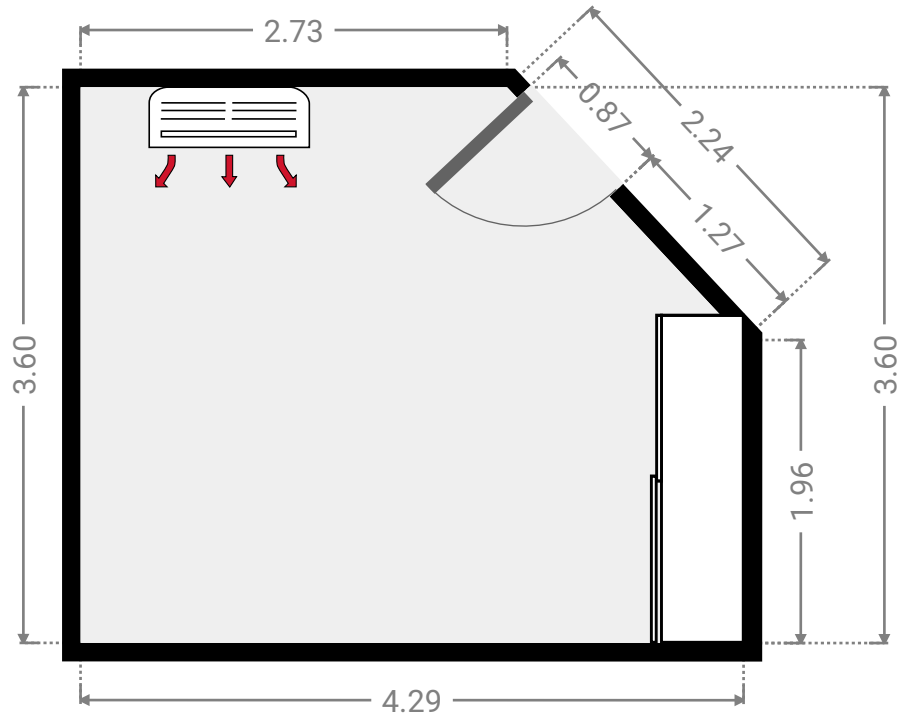
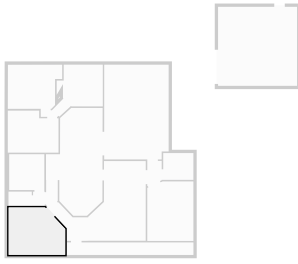
▼ **Hall**
Ground Floor

WIDTH: 0.88 m • LENGTH: 1.07 m
AREA: 0.95 m² • PERIMETER: 3.92 m



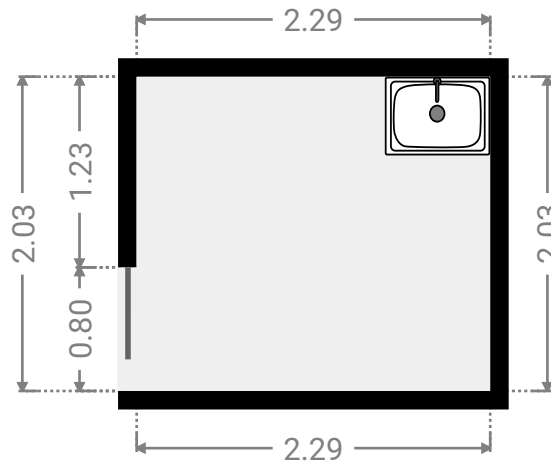
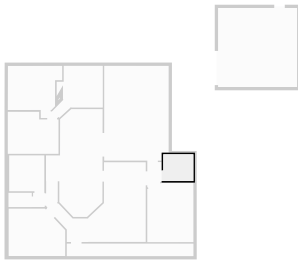
▼ Primary Bedroom Ground Floor

WIDTH: 4.29 m • LENGTH: 3.60 m • CEILING HEIGHT: 2.17 m
AREA: 14.18 m² • PERIMETER: 14.85 m



▼ Laundry Room Ground Floor

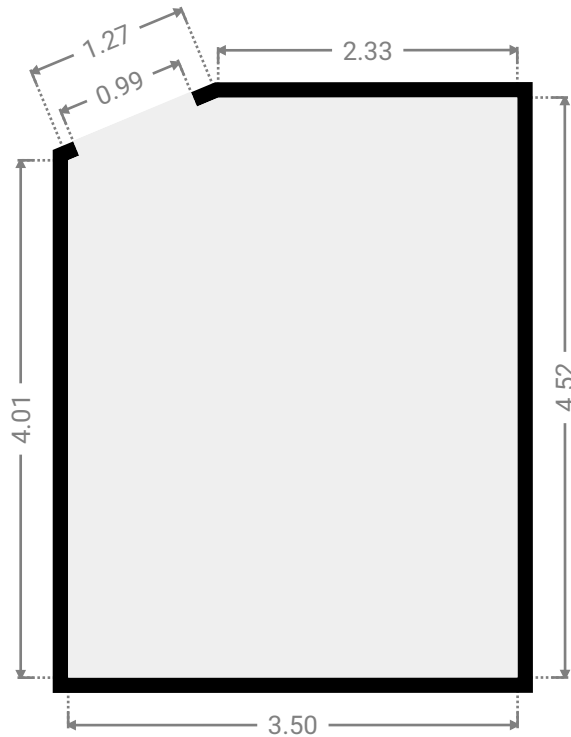
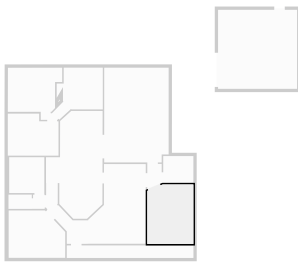
WIDTH: 2.29 m • LENGTH: 2.03 m
AREA: 4.65 m² • PERIMETER: 8.64 m



FLOORS: 1

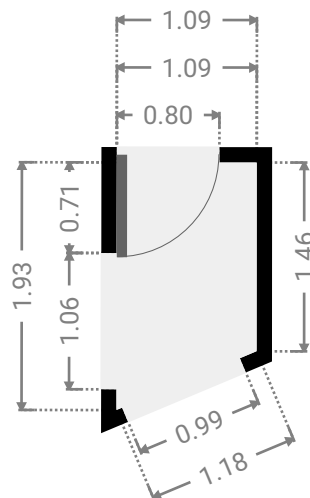
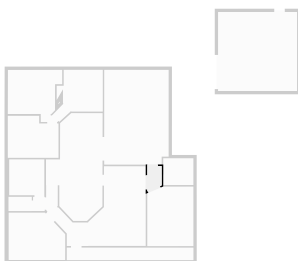
▼ Living Room Ground Floor

WIDTH: 3.50 m • LENGTH: 4.52 m
AREA: 15.53 m² • PERIMETER: 15.65 m



▼ . Ground Floor

WIDTH: 1.09 m • LENGTH: 1.93 m
AREA: 1.85 m² • PERIMETER: 5.68 m



▼ Living/ Meals Ground Floor

WIDTH: 4.37 m • LENGTH: 6.04 m • CEILING HEIGHT: 2.17 m
AREA: 22.04 m² • PERIMETER: 20.15 m

