

22 Kingfisher Parade

Ground Floor



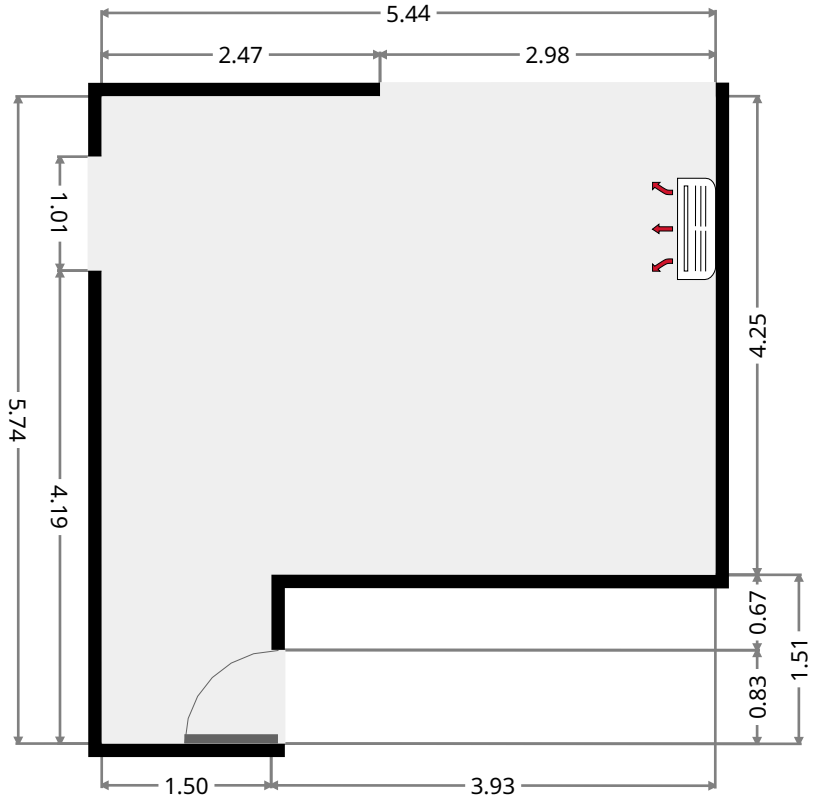
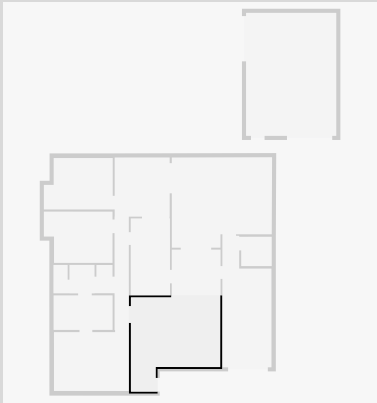
THIS FLOORPLAN IS PROVIDED WITHOUT WARRANTY OF ANY KIND. SENSOPIA DISCLAIMS ANY WARRANTY INCLUDING, WITHOUT LIMITATION, SATISFACTORY QUALITY OR ACCURACY OF DIMENSIONS.



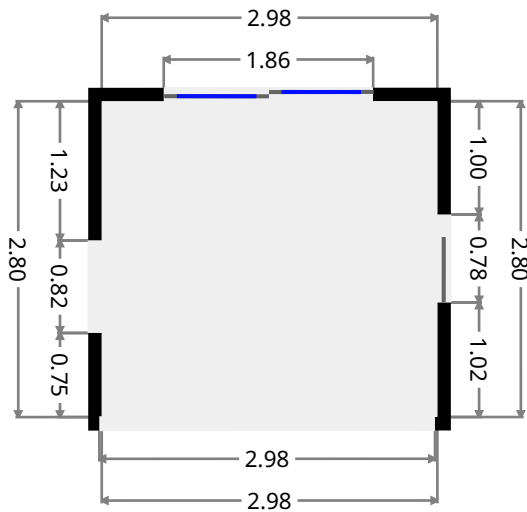
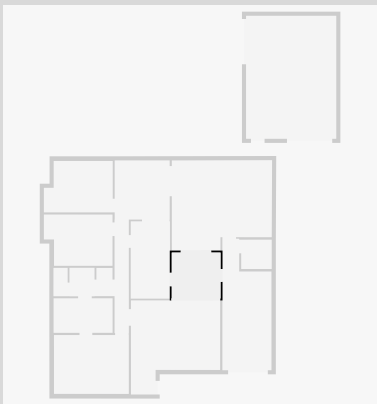
22 Kingfisher Parade

Living Room

Width: 5.44 m
 Length: 5.74 m
 Area: 25.33 m²
 Perimeter: 22.36 m



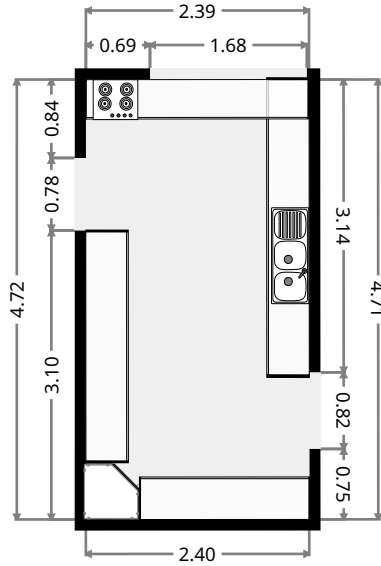
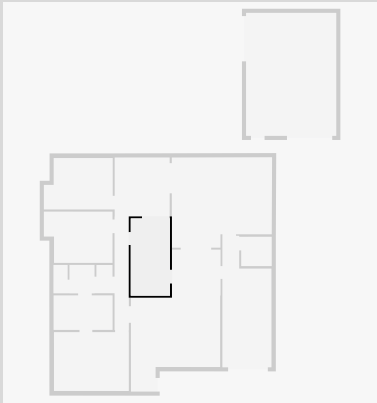
•
 Width: 2.80 m
 Length: 2.98 m
 Area: 8.33 m²
 Perimeter: 11.55 m



22 Kingfisher Parade

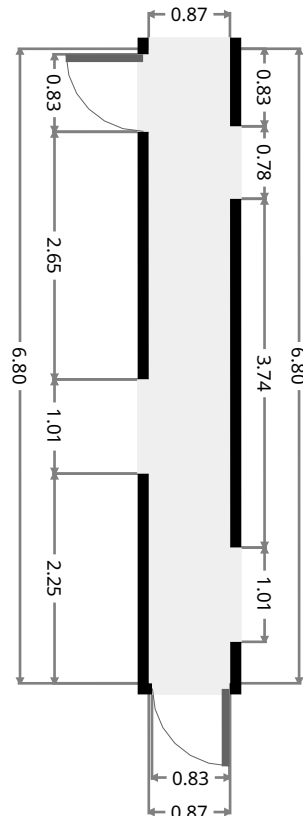
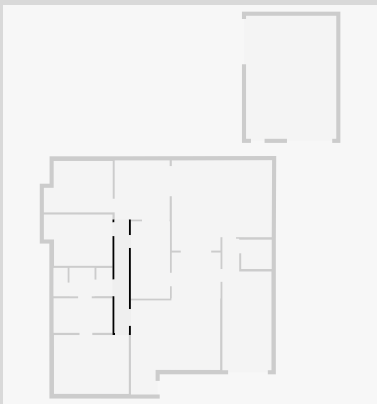
Kitchen

Width: 2.40 m
 Length: 4.71 m
 Area: 11.28 m²
 Perimeter: 14.21 m



Hall

Width: 0.87 m
 Length: 6.80 m
 Area: 5.92 m²
 Perimeter: 15.34 m

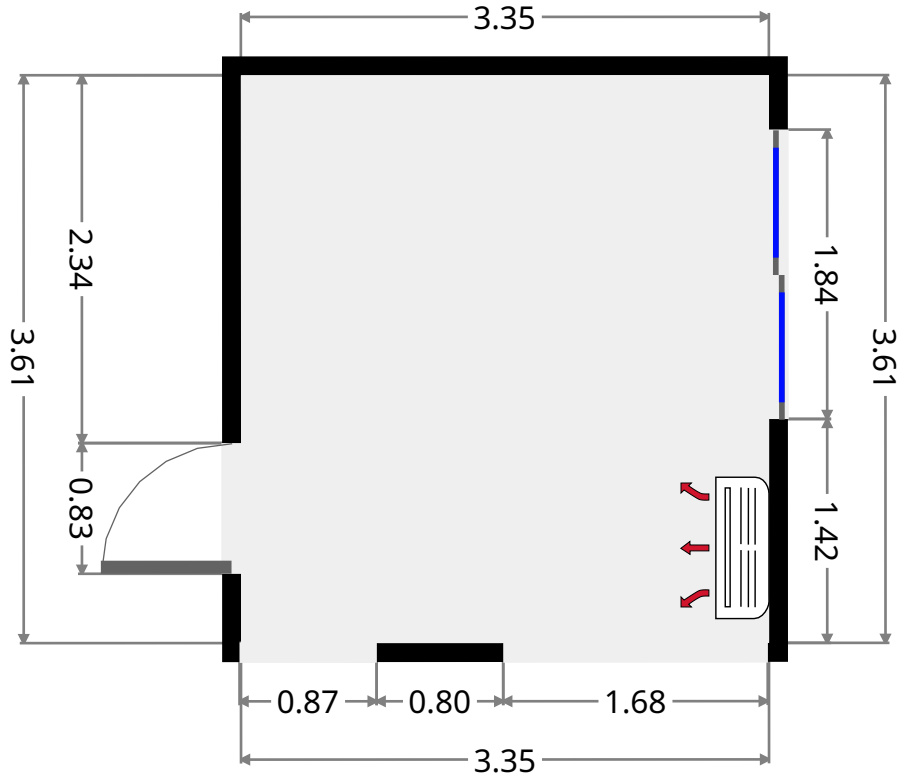
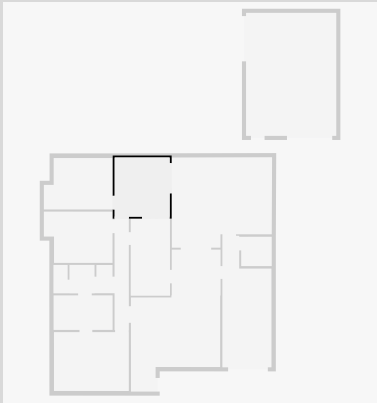


THIS FLOORPLAN IS PROVIDED WITHOUT WARRANTY OF ANY KIND. SENSOPIA DISCLAIMS ANY WARRANTY INCLUDING, WITHOUT LIMITATION, SATISFACTORY QUALITY OR ACCURACY OF DIMENSIONS.

22 Kingfisher Parade

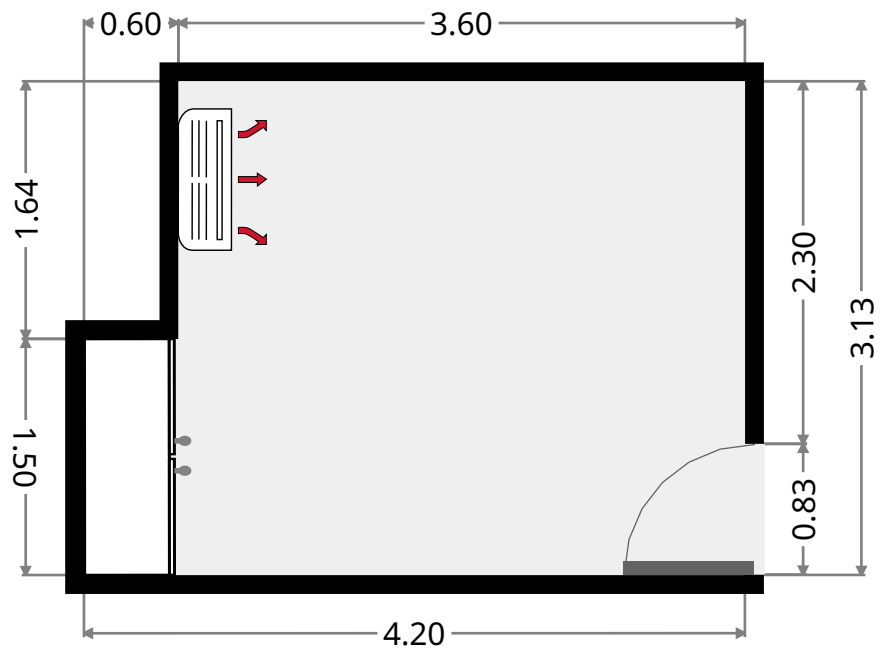
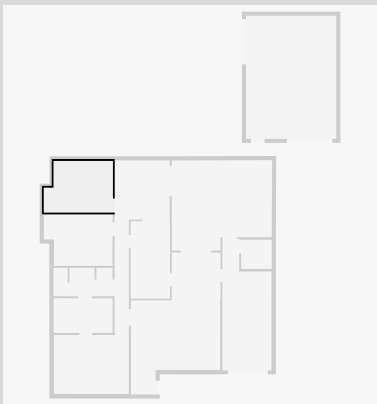
Dining Room

Width: 3.35 m
 Length: 3.61 m
 Area: 12.09 m²
 Perimeter: 13.92 m

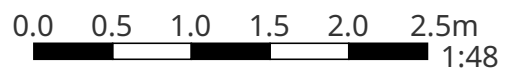


Bedroom

Width: 3.13 m
 Length: 4.20 m
 Area: 12.18 m²
 Perimeter: 14.67 m



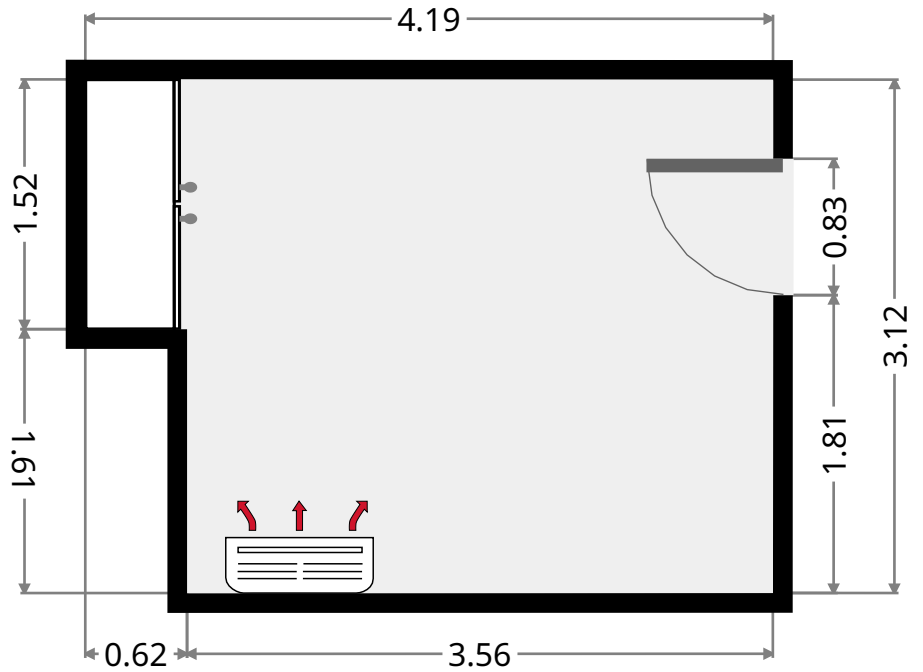
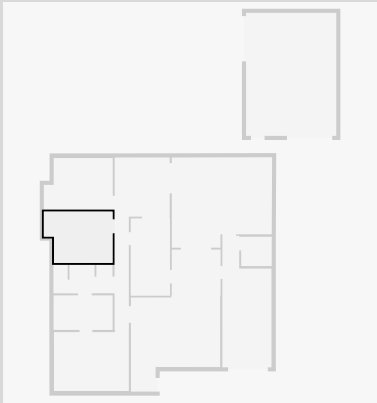
THIS FLOORPLAN IS PROVIDED WITHOUT WARRANTY OF ANY KIND. SENSOPIA DISCLAIMS ANY WARRANTY INCLUDING, WITHOUT LIMITATION, SATISFACTORY QUALITY OR ACCURACY OF DIMENSIONS.



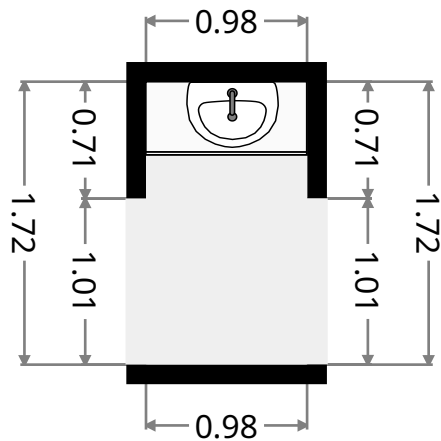
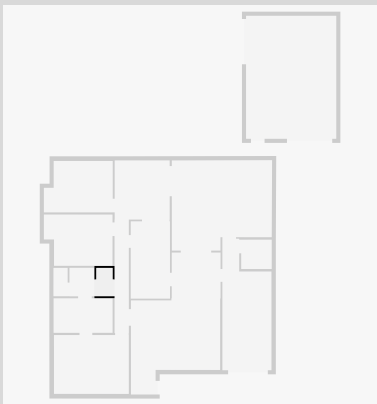
22 Kingfisher Parade

Bedroom

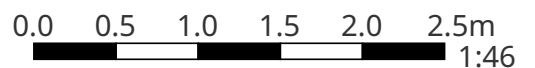
Width: 3.12 m
 Length: 4.19 m
 Area: 12.09 m²
 Perimeter: 14.62 m



•
 Width: 0.98 m
 Length: 1.72 m
 Area: 1.69 m²
 Perimeter: 5.41 m

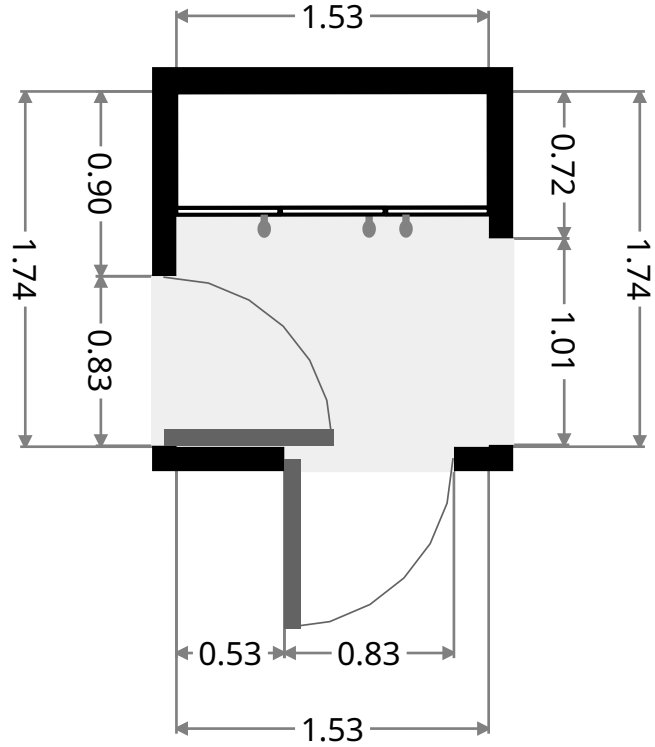
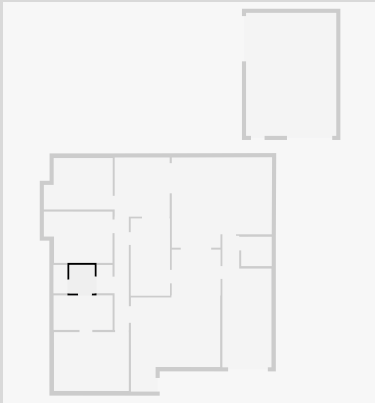


THIS FLOORPLAN IS PROVIDED WITHOUT WARRANTY OF ANY KIND. SENSOPIA DISCLAIMS ANY WARRANTY INCLUDING, WITHOUT LIMITATION, SATISFACTORY QUALITY OR ACCURACY OF DIMENSIONS.



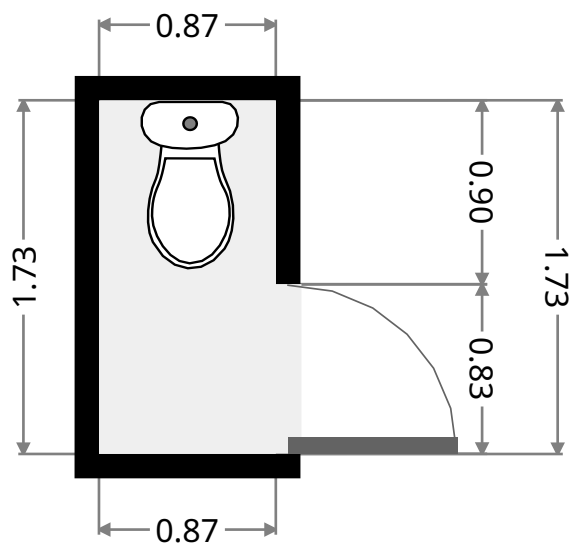
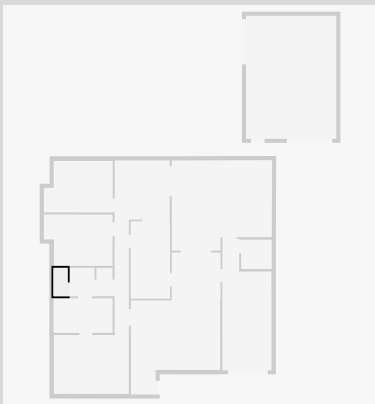
22 Kingfisher Parade

•
 Width: 1.53 m
 Length: 1.74 m
 Area: 2.66 m²
 Perimeter: 6.54 m



Toilet / Half Bath

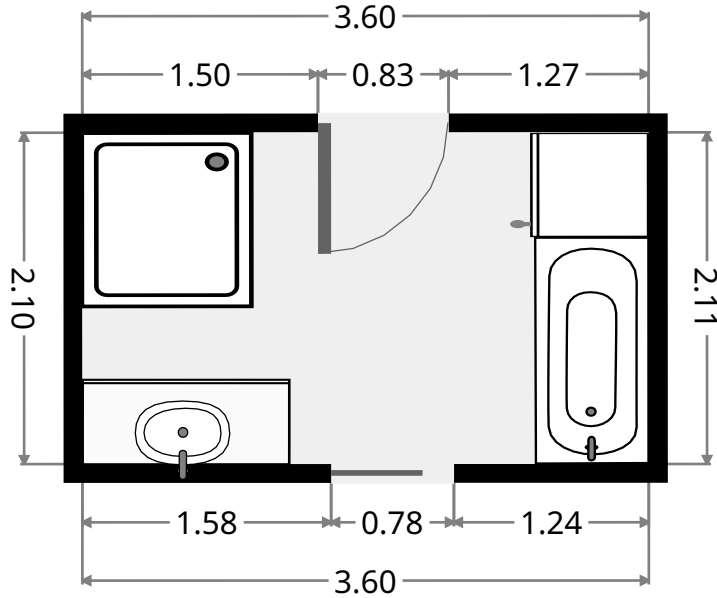
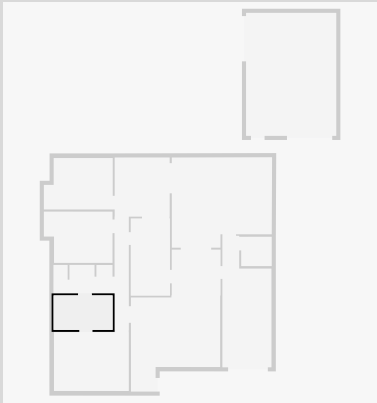
Width: 0.87 m
 Length: 1.73 m
 Area: 1.50 m²
 Perimeter: 5.19 m



22 Kingfisher Parade

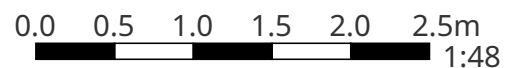
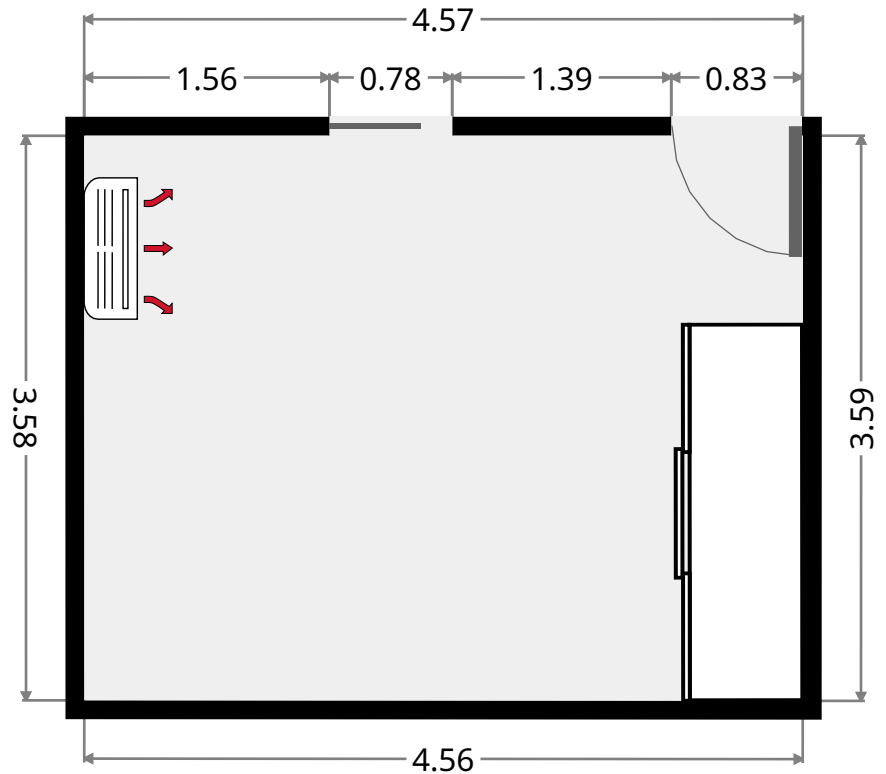
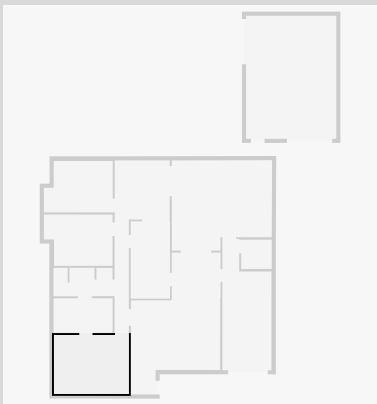
Bathroom

Width: 2.11 m
 Length: 3.60 m
 Area: 7.58 m²
 Perimeter: 11.41 m



Master Bedroom

Width: 3.59 m
 Length: 4.56 m
 Area: 16.37 m²
 Perimeter: 16.30 m

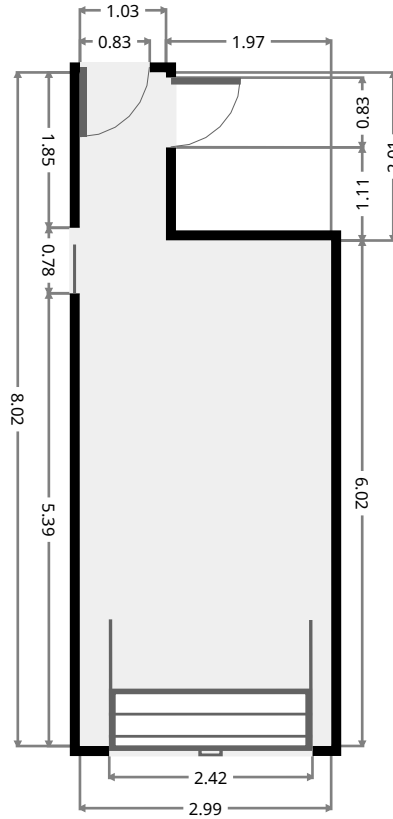
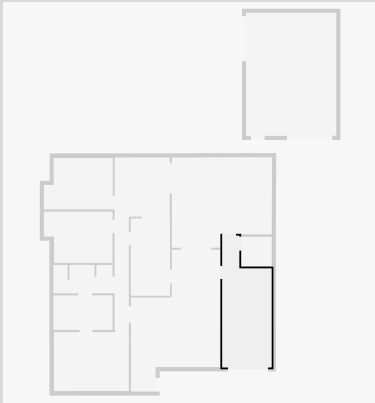


THIS FLOORPLAN IS PROVIDED WITHOUT WARRANTY OF ANY KIND. SENSOPIA DISCLAIMS ANY WARRANTY INCLUDING, WITHOUT LIMITATION, SATISFACTORY QUALITY OR ACCURACY OF DIMENSIONS.

22 Kingfisher Parade

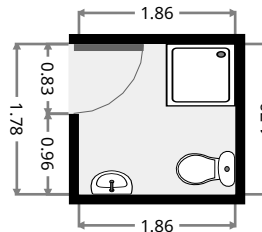
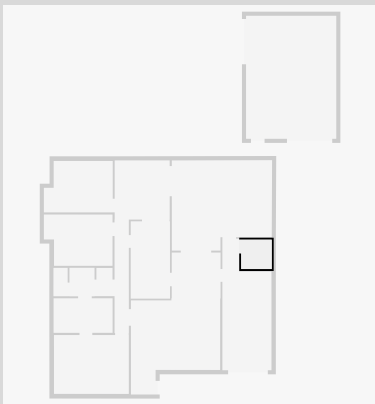
Garage

Width: 2.99 m
 Length: 8.02 m
 Area: 20.06 m²
 Perimeter: 22.03 m



Bathroom

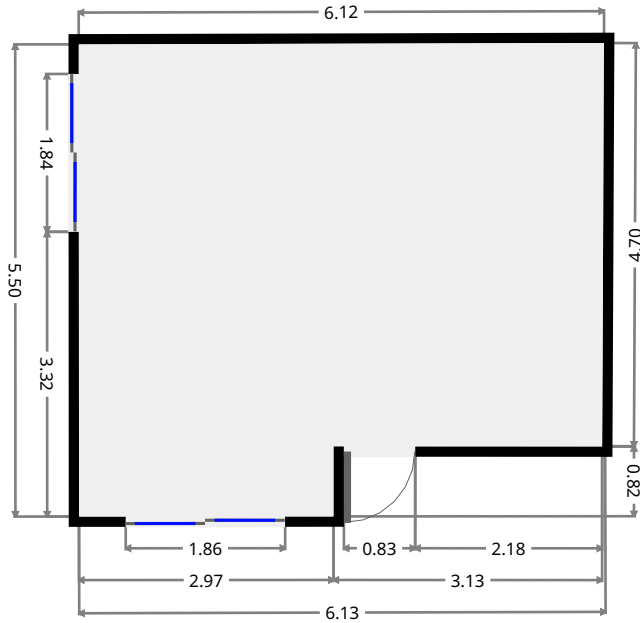
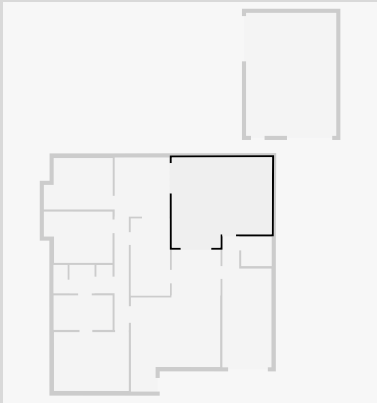
Width: 1.79 m
 Length: 1.86 m
 Area: 3.33 m²
 Perimeter: 7.30 m



22 Kingfisher Parade

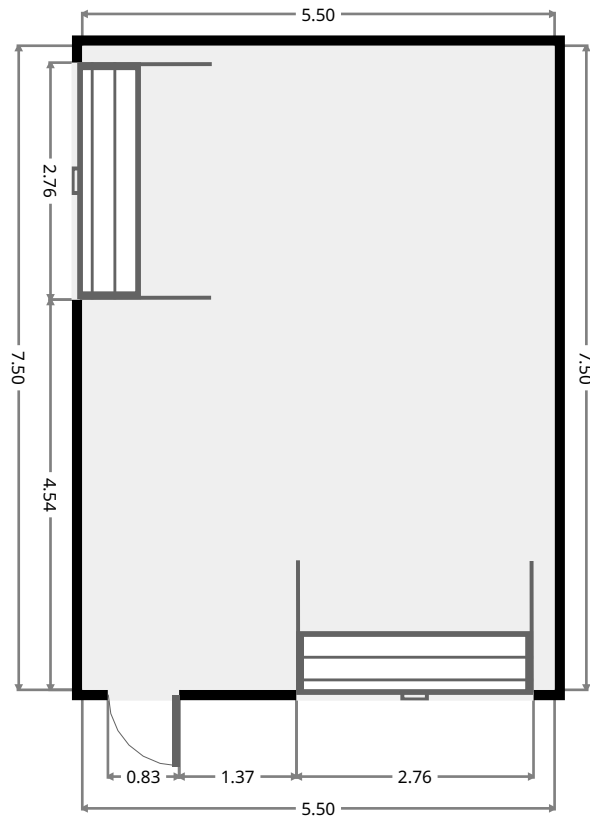
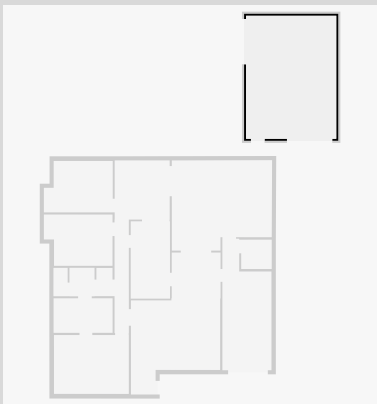
Outdoor Area

Width: 5.50 m
 Length: 6.13 m
 Area: 31.05 m²
 Perimeter: 23.22 m



Shed

Width: 5.50 m
 Length: 7.50 m
 Area: 41.25 m²
 Perimeter: 26.00 m



THIS FLOORPLAN IS PROVIDED WITHOUT WARRANTY OF ANY KIND. SENSOPIA DISCLAIMS ANY WARRANTY INCLUDING, WITHOUT LIMITATION, SATISFACTORY QUALITY OR ACCURACY OF DIMENSIONS.