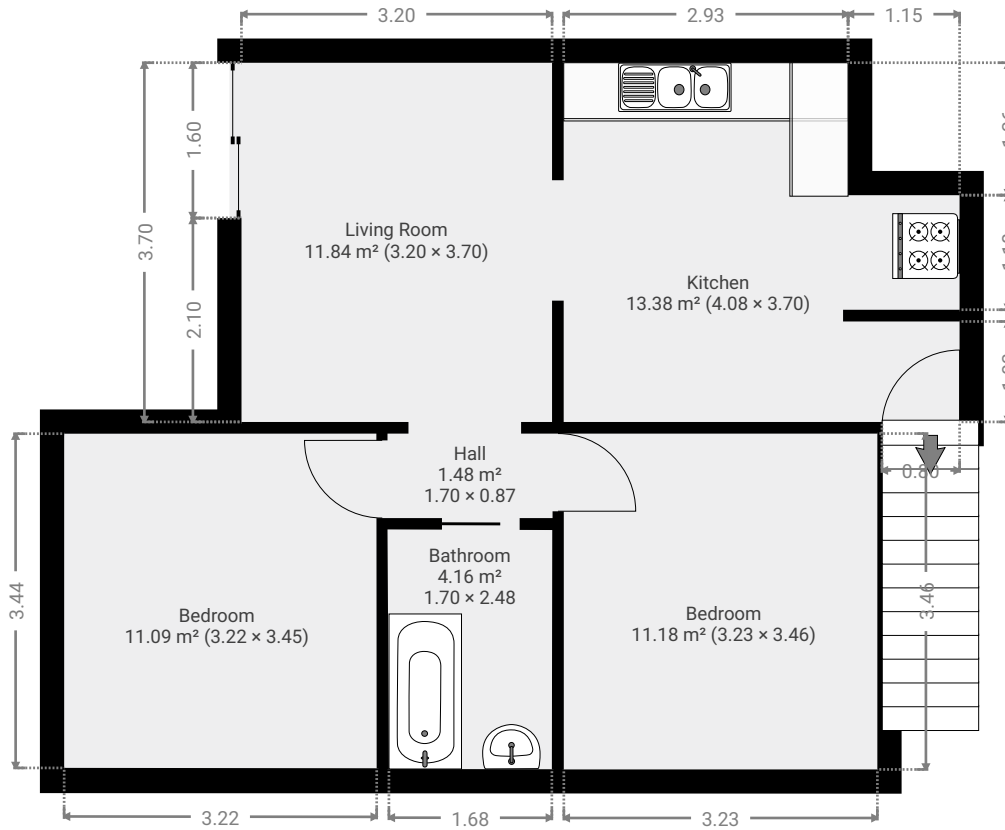


TOTAL AREA: 60.56 m² • LIVING AREA: 60.56 m² • FLOORS: 2 • ROOMS: 7

▼ Ground Floor

TOTAL AREA: 53.10 m² • LIVING AREA: 53.10 m² • ROOMS: 6



▼ Basement • Level 1

TOTAL AREA: 7.46 m² • LIVING AREA: 7.46 m² • ROOMS: 1

