

# 21 Marc Crescent

**SUBMITTED BY**

Ray White Rockhampton Casey  
stockers@cqoz.com

---

**CREATED ON**

2022-08-24

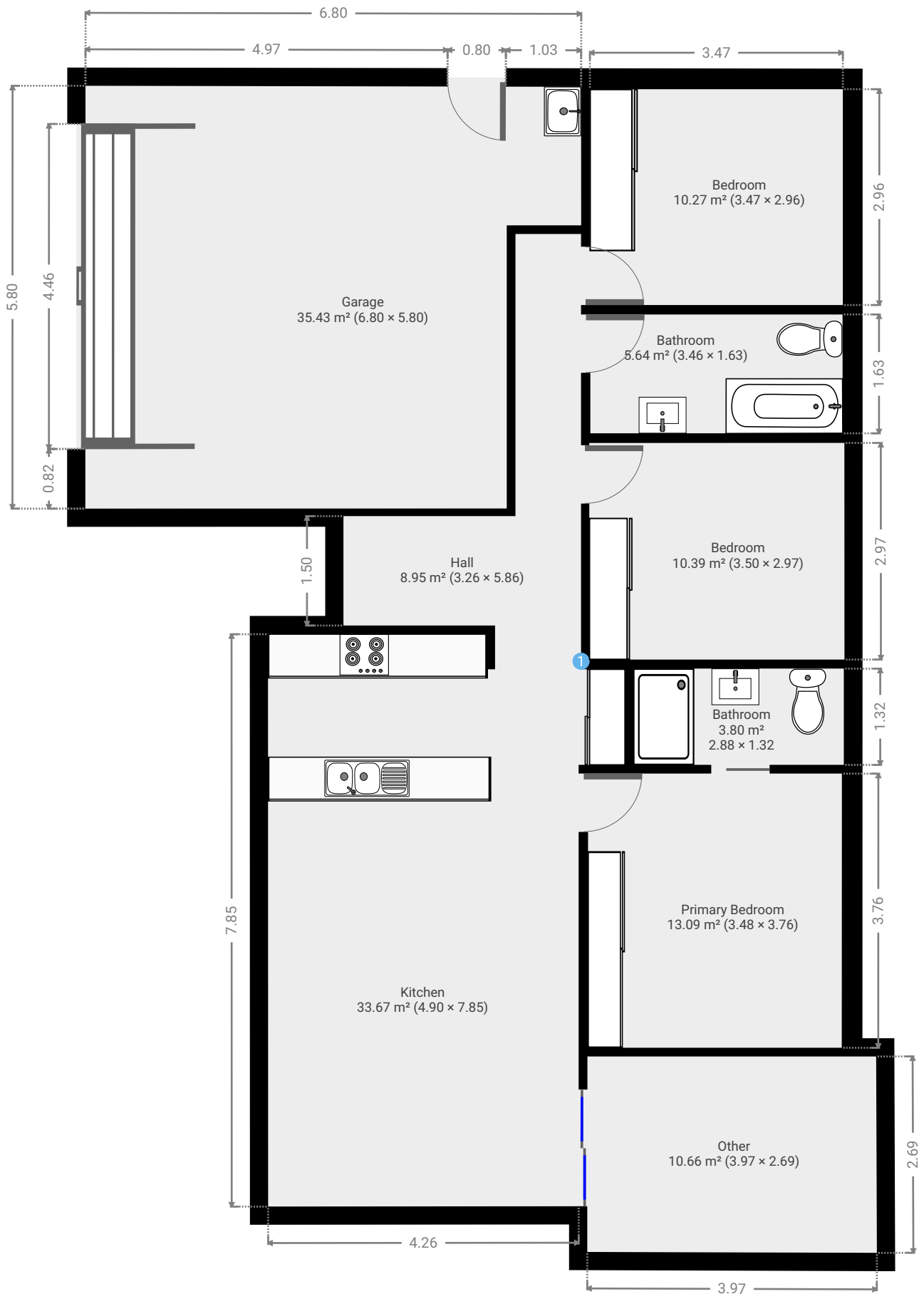
---

**Floors**

1

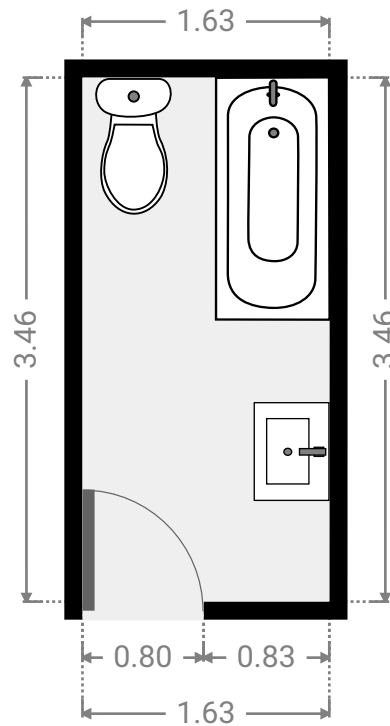
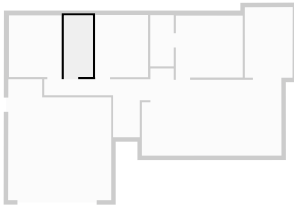
---

▼ Ground Floor



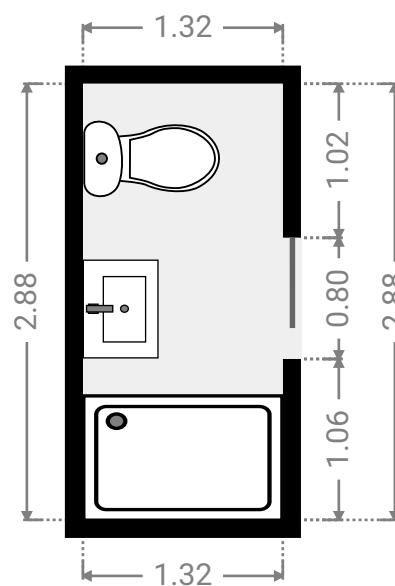
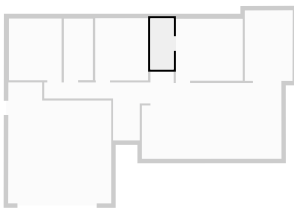
## ▼ Bathroom Ground Floor

WIDTH: 1.63 m • LENGTH: 3.46 m  
AREA: 5.64 m<sup>2</sup> • PERIMETER: 10.18 m



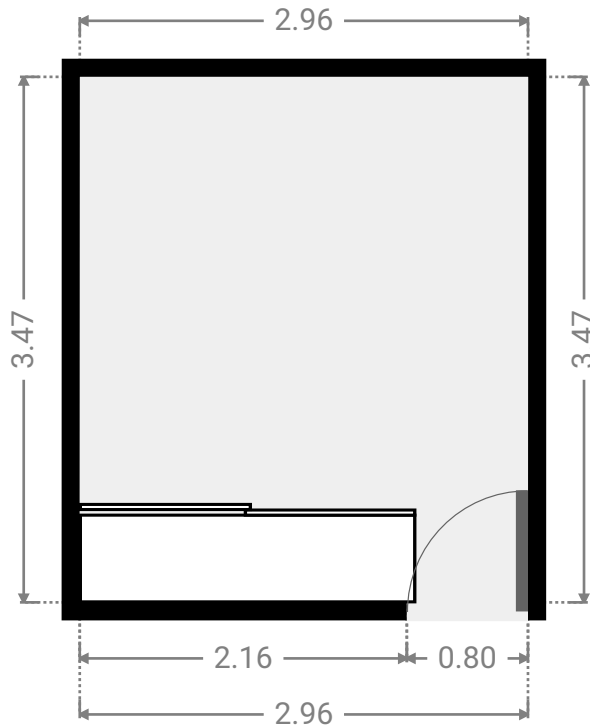
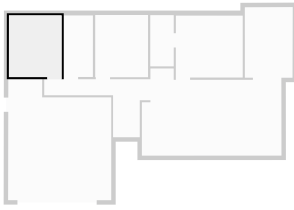
## ▼ Bathroom Ground Floor

WIDTH: 1.32 m • LENGTH: 2.88 m  
AREA: 3.80 m<sup>2</sup> • PERIMETER: 8.40 m



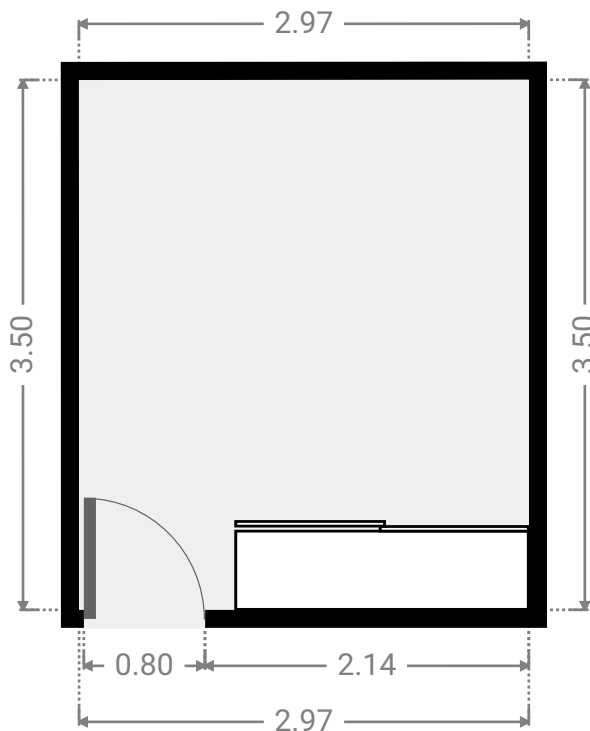
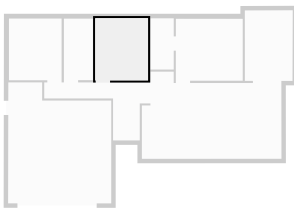
▼ **Bedroom**  
Ground Floor

WIDTH: 2.96 m • LENGTH: 3.47 m  
AREA: 10.27 m<sup>2</sup> • PERIMETER: 12.86 m



▼ **Bedroom**  
Ground Floor

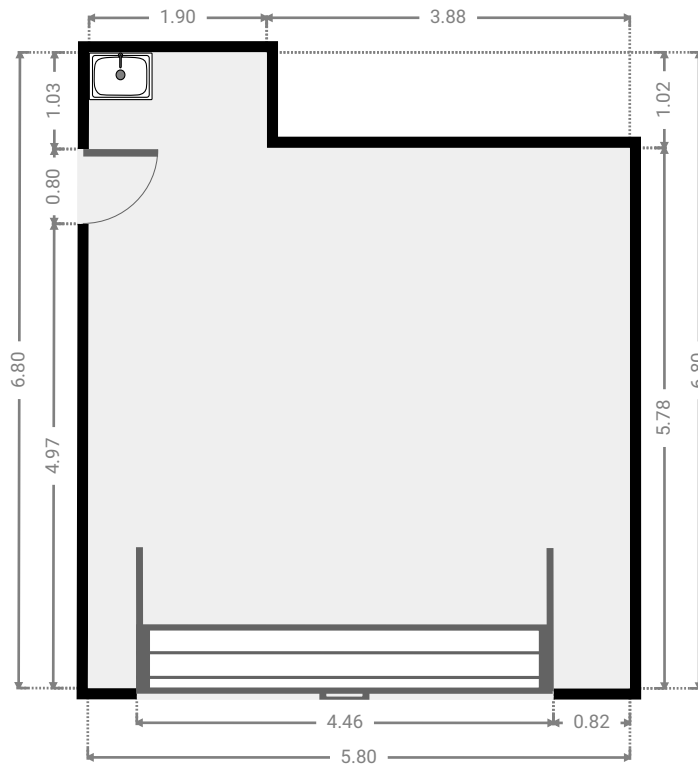
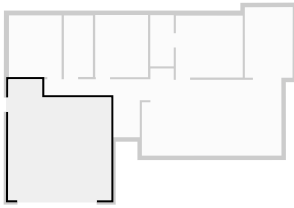
WIDTH: 2.97 m • LENGTH: 3.50 m  
AREA: 10.39 m<sup>2</sup> • PERIMETER: 12.94 m



FLOORS: 1

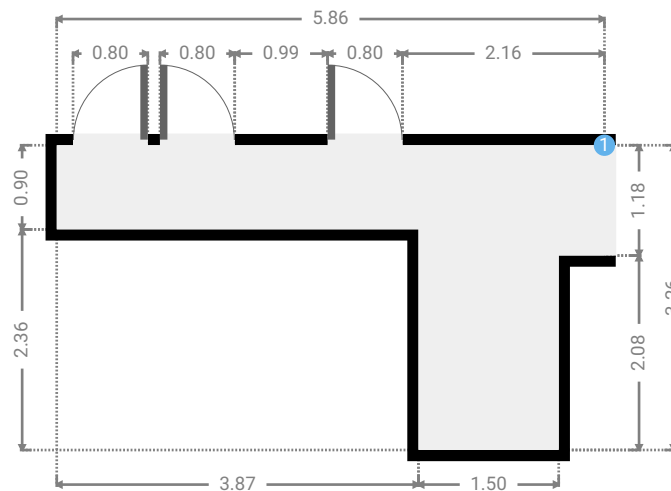
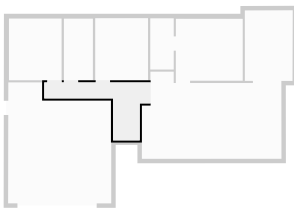
▼ **Garage**  
Ground Floor

WIDTH: 5.80 m • LENGTH: 6.80 m  
AREA: 35.43 m<sup>2</sup> • PERIMETER: 25.19 m



▼ **Hall**  
Ground Floor

WIDTH: 5.86 m • LENGTH: 3.26 m  
AREA: 8.95 m<sup>2</sup> • PERIMETER: 18.24 m



## ▼ Hall/Ground Floor

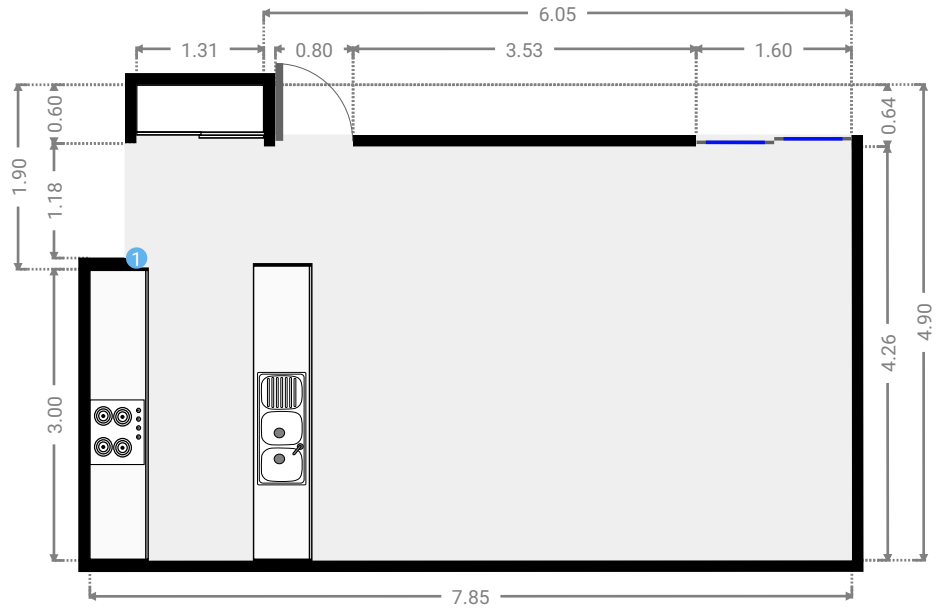
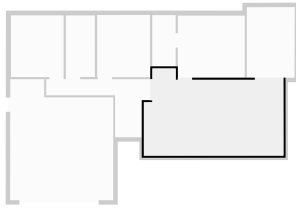
### 1 OPENING

Height  
0.00 m



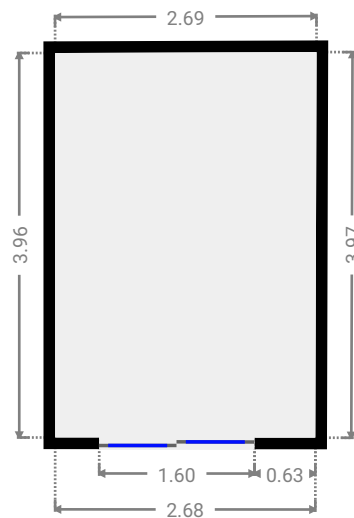
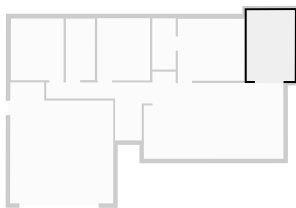
## ▼ Kitchen Ground Floor

WIDTH: 7.85 m • LENGTH: 4.90 m  
AREA: 33.67 m<sup>2</sup> • PERIMETER: 25.49 m



## ▼ Other Ground Floor

WIDTH: 2.69 m • LENGTH: 3.97 m  
AREA: 10.66 m<sup>2</sup> • PERIMETER: 13.31 m



## ▼ Primary Bedroom Ground Floor

WIDTH: 3.76 m • LENGTH: 3.48 m  
AREA: 13.09 m<sup>2</sup> • PERIMETER: 14.48 m

