

Ray White Rockhampton  
 david.bell@raywhite.com  
 (07)4923 0000  
 2016-09-29

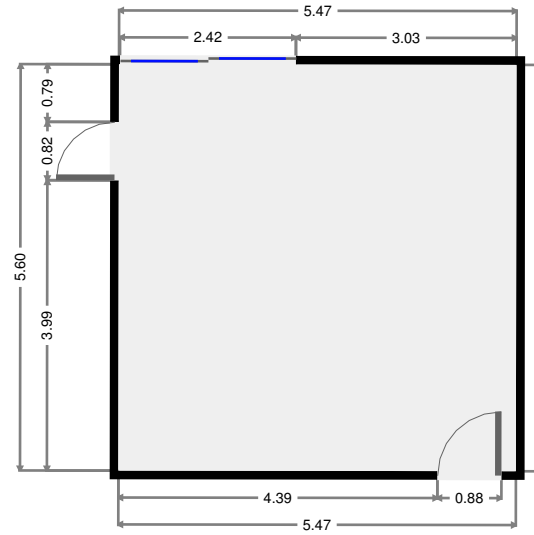
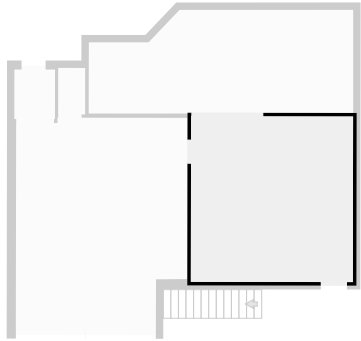
- 137 m<sup>2</sup>
- 2 Floors
- 15 Rooms
- 3 Bedrooms
- 1 Bathroom

THIS FLOORPLAN IS PROVIDED WITHOUT WARRANTY OF ANY KIND. RAY WHITE ROCKHAMPTON DISCLAIMS ANY WARRANTY INCLUDING, WITHOUT LIMITATION, SATISFACTORY QUALITY OR ACCURACY OF DIMENSIONS. ALL CARE IS TAKEN TO ENSURE ACCURACY BUT MEASUREMENTS, POSITIONING AND PLACEMENTS CANNOT BE GUARANTEED.



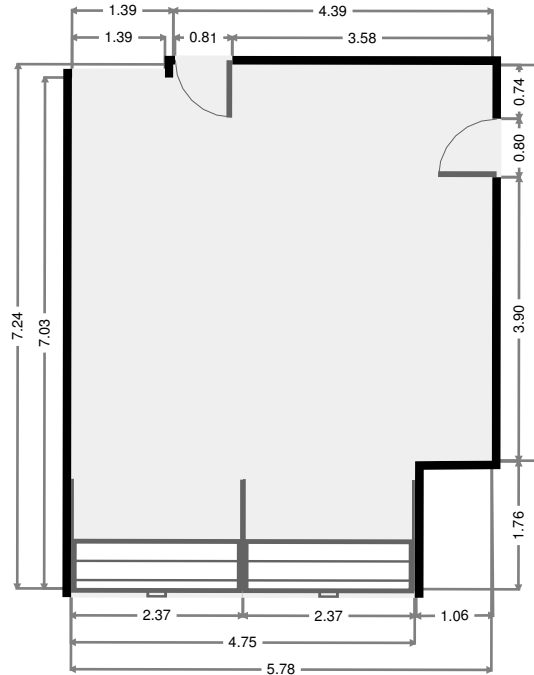
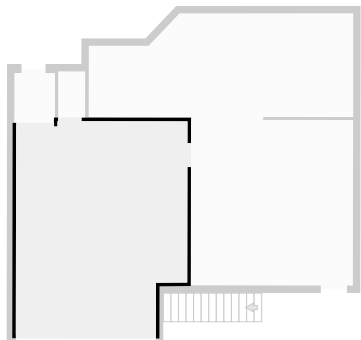
# Rumpus Room

Width: 5.47 m  
 Length: 5.59 m  
 Area: 30.56 m<sup>2</sup>  
 Perimeter: 22.11 m  
 Ceiling Height: 2.17 m



# Garage

Width: 5.78 m  
 Length: 7.24 m  
 Area: 39.58 m<sup>2</sup>  
 Perimeter: 25.97 m  
 Ceiling Height: 2.17 m

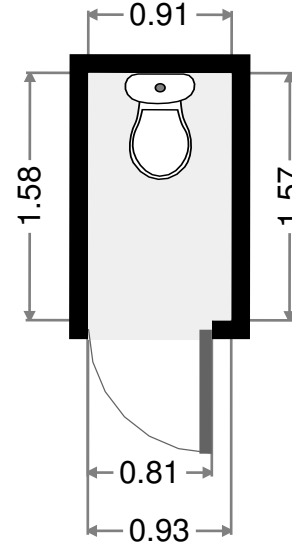
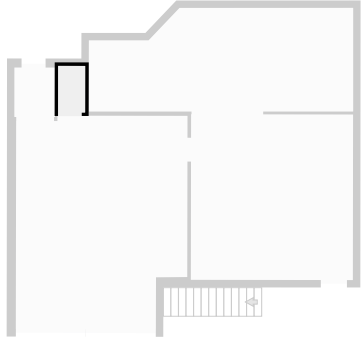


THIS FLOORPLAN IS PROVIDED WITHOUT WARRANTY OF ANY KIND. RAY WHITE ROCKHAMPTON DISCLAIMS ANY WARRANTY INCLUDING, WITHOUT LIMITATION, SATISFACTORY QUALITY OR ACCURACY OF DIMENSIONS. ALL CARE IS TAKEN TO ENSURE ACCURACY BUT MEASUREMENTS, POSITIONING AND PLACEMENTS CANNOT BE GUARANTEED.

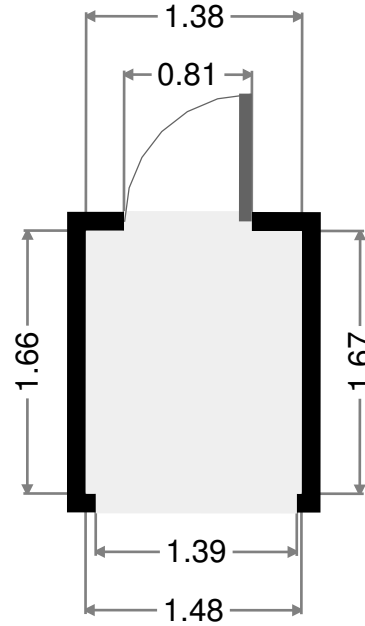
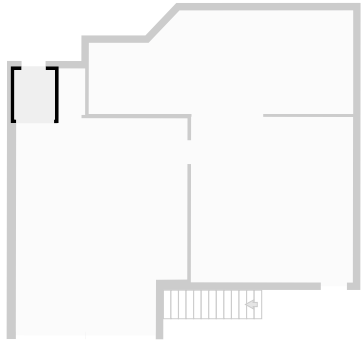


# Toilet

Width: 0.91 m  
 Length: 1.58 m  
 Area: 1.43 m<sup>2</sup>  
 Perimeter: 4.96 m



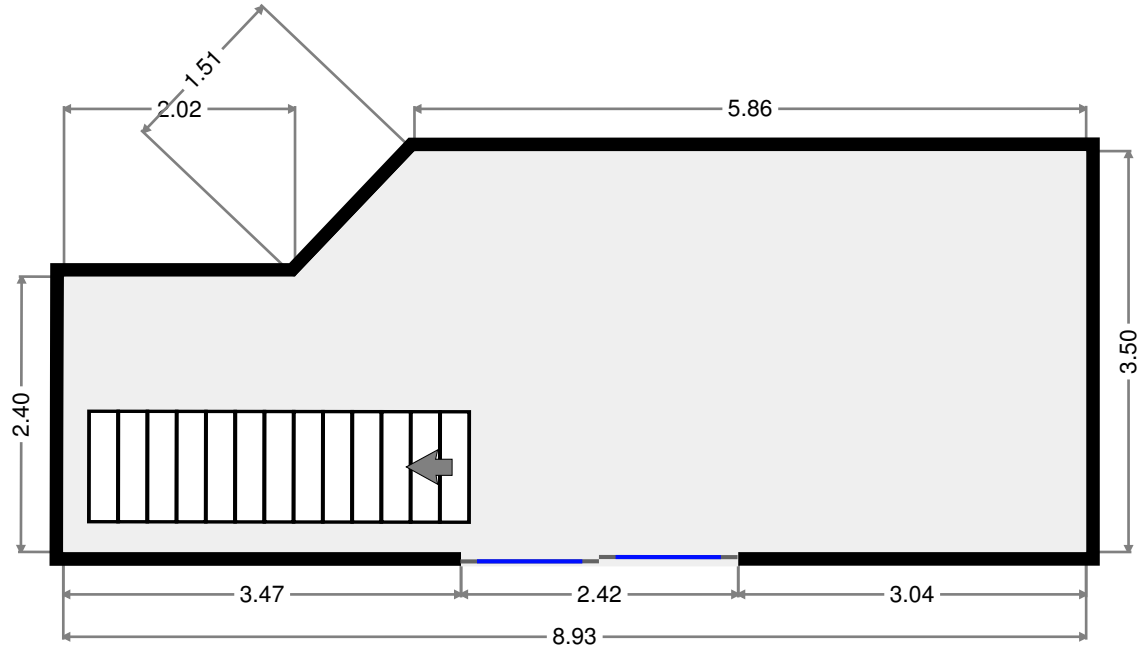
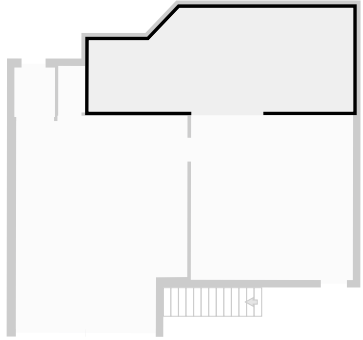
Width: 1.37 m  
 Length: 1.66 m  
 Area: 2.29 m<sup>2</sup>  
 Perimeter: 6.08 m



THIS FLOORPLAN IS PROVIDED WITHOUT WARRANTY OF ANY KIND. RAY WHITE ROCKHAMPTON DISCLAIMS ANY WARRANTY INCLUDING, WITHOUT LIMITATION, SATISFACTORY QUALITY OR ACCURACY OF DIMENSIONS. ALL CARE IS TAKEN TO ENSURE ACCURACY BUT MEASUREMENTS, POSITIONING AND PLACEMENTS CANNOT BE GUARANTEED.

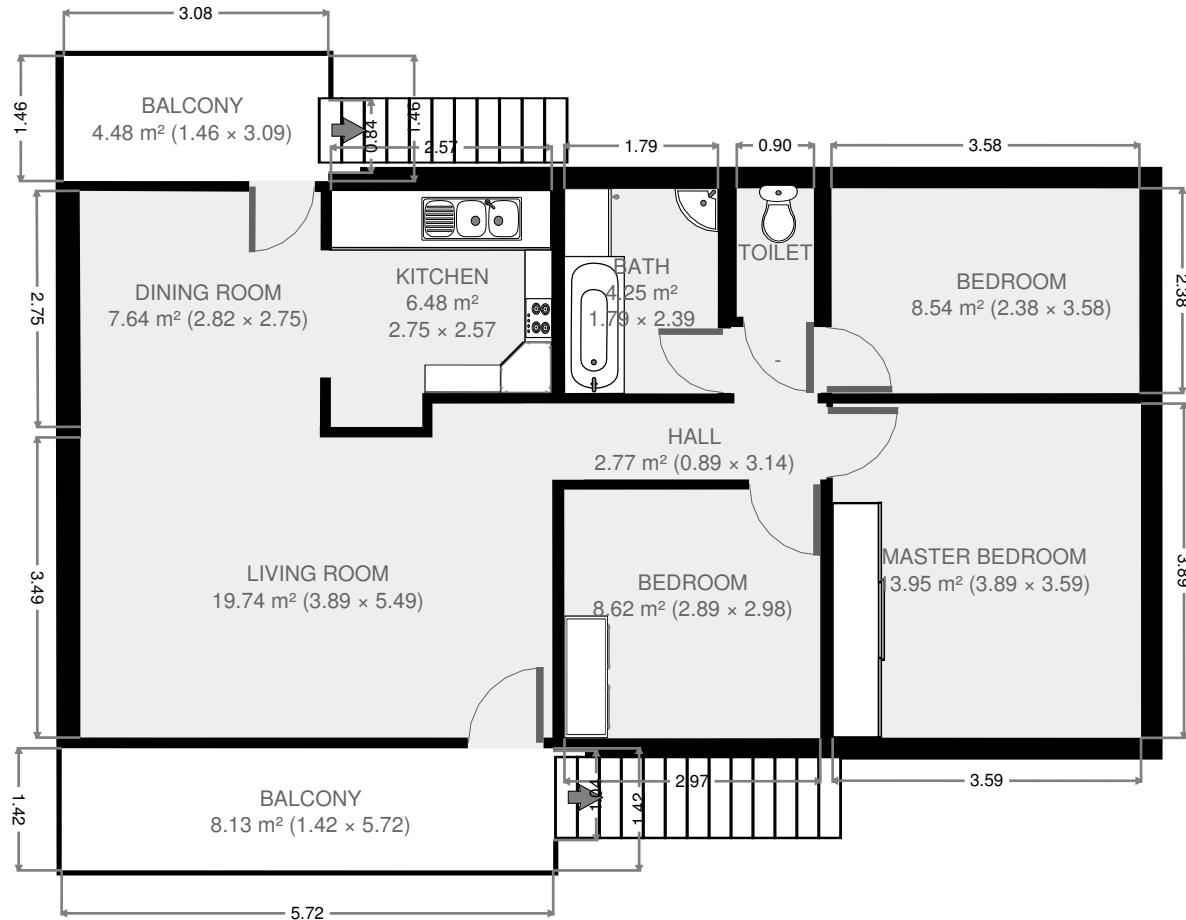
# Outdoor Entertainment Area

Width: 3.50 m  
 Length: 8.93 m  
 Area: 28.44 m<sup>2</sup>  
 Perimeter: 24.22 m  
 Ceiling Height: 2.17 m



THIS FLOORPLAN IS PROVIDED WITHOUT WARRANTY OF ANY KIND. RAY WHITE ROCKHAMPTON DISCLAIMS ANY WARRANTY INCLUDING, WITHOUT LIMITATION, SATISFACTORY QUALITY OR ACCURACY OF DIMENSIONS. ALL CARE IS TAKEN TO ENSURE ACCURACY BUT MEASUREMENTS, POSITIONING AND PLACEMENTS CANNOT BE GUARANTEED.





Ray White Rockhampton  
 david.bell@raywhite.com  
 (07)4923 0000  
 2016-09-29

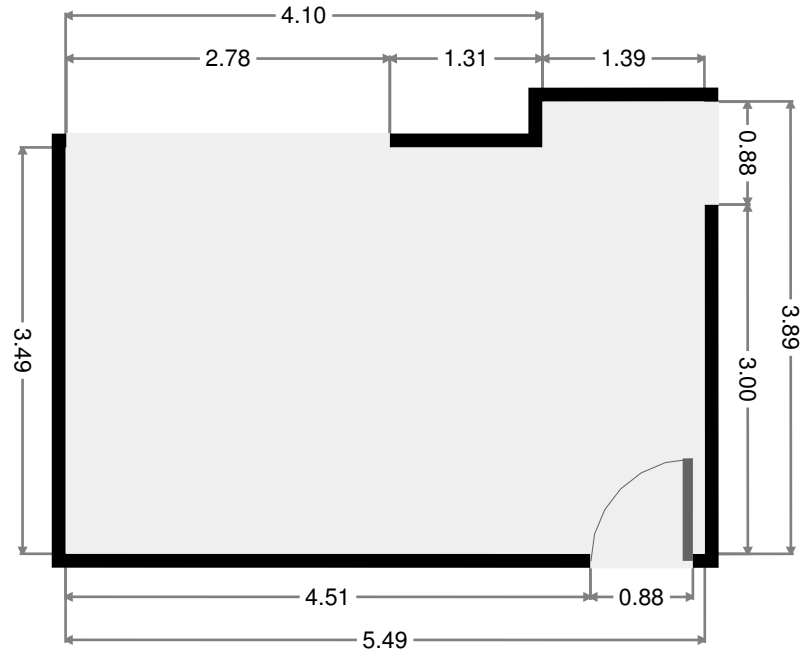
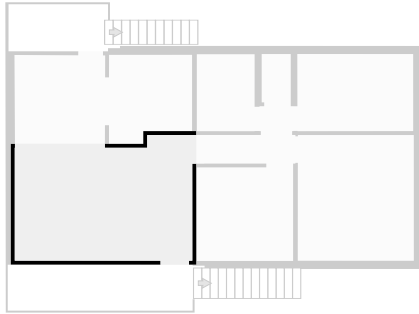
- 137** m<sup>2</sup>
- 2** Floors
- 15** Rooms
- 3** Bedrooms
- 1** Bathroom

THIS FLOORPLAN IS PROVIDED WITHOUT WARRANTY OF ANY KIND. RAY WHITE ROCKHAMPTON DISCLAIMS ANY WARRANTY INCLUDING, WITHOUT LIMITATION, SATISFACTORY QUALITY OR ACCURACY OF DIMENSIONS. ALL CARE IS TAKEN TO ENSURE ACCURACY BUT MEASUREMENTS, POSITIONING AND PLACEMENTS CANNOT BE GUARANTEED.



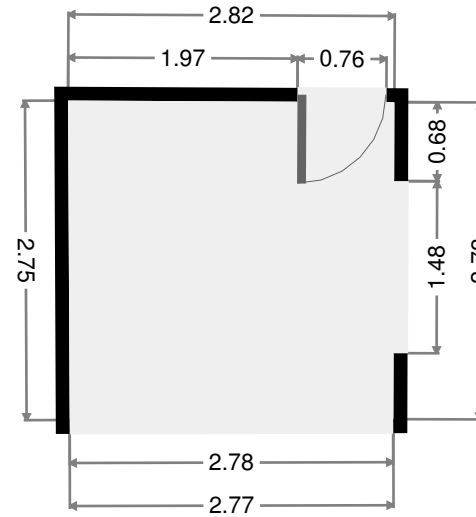
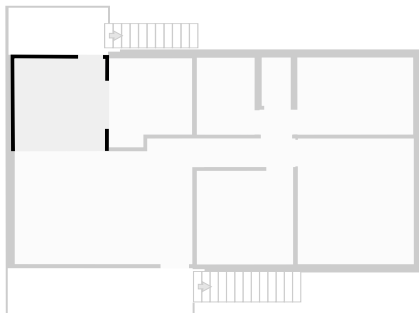
# Living Room

Width: 3.89 m  
 Length: 5.49 m  
 Area: 19.74 m<sup>2</sup>  
 Perimeter: 18.76 m  
 Ceiling Height: 2.34 m



# Dining Room

Width: 2.75 m  
 Length: 2.82 m  
 Area: 7.64 m<sup>2</sup>  
 Perimeter: 11.06 m  
 Ceiling Height: 2.34 m

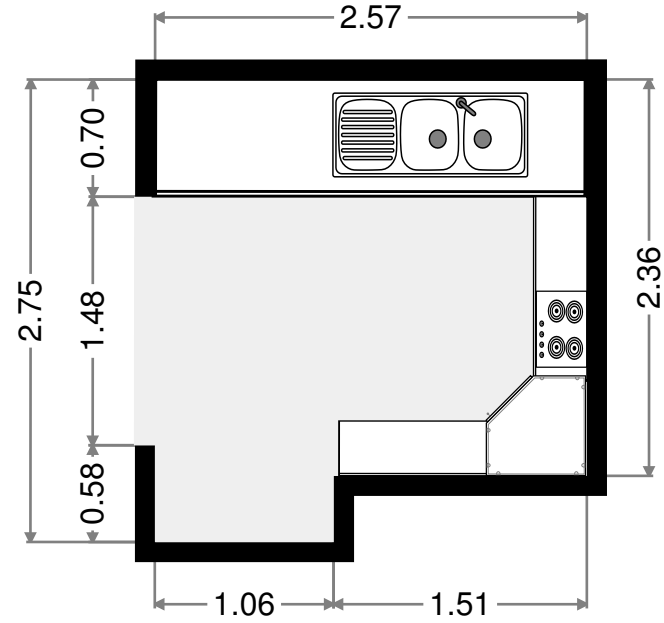
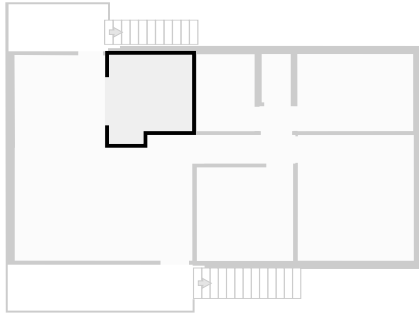


THIS FLOORPLAN IS PROVIDED WITHOUT WARRANTY OF ANY KIND. RAY WHITE ROCKHAMPTON DISCLAIMS ANY WARRANTY INCLUDING, WITHOUT LIMITATION, SATISFACTORY QUALITY OR ACCURACY OF DIMENSIONS. ALL CARE IS TAKEN TO ENSURE ACCURACY BUT MEASUREMENTS, POSITIONING AND PLACEMENTS CANNOT BE GUARANTEED.



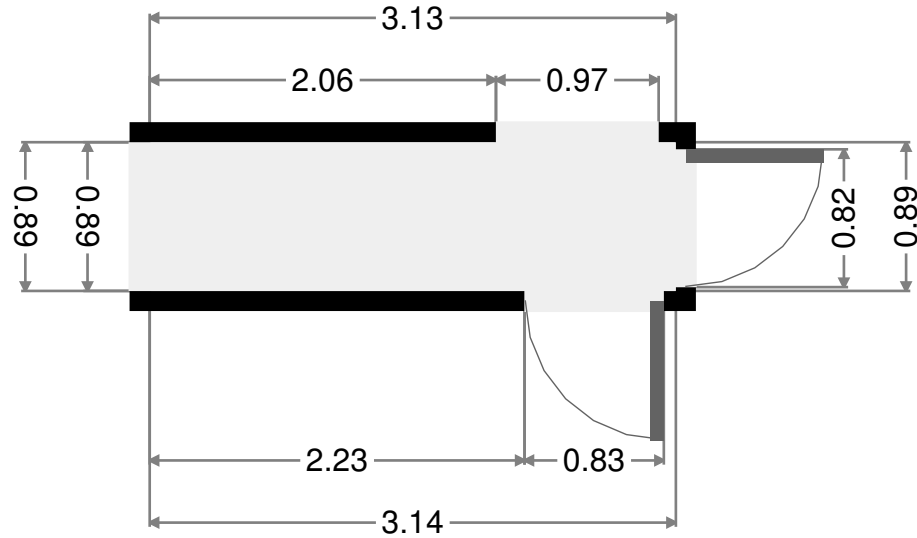
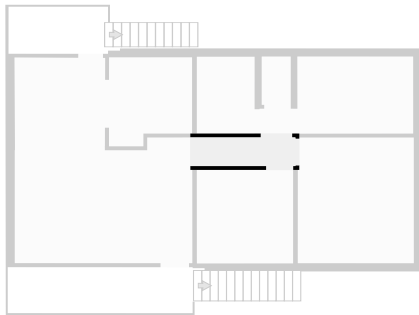
# Kitchen

Width: 2.57 m  
 Length: 2.75 m  
 Area: 6.48 m<sup>2</sup>  
 Perimeter: 10.65 m  
 Ceiling Height: 2.34 m



# Hall

Width: 0.89 m  
 Length: 3.14 m  
 Area: 2.77 m<sup>2</sup>  
 Perimeter: 8.03 m

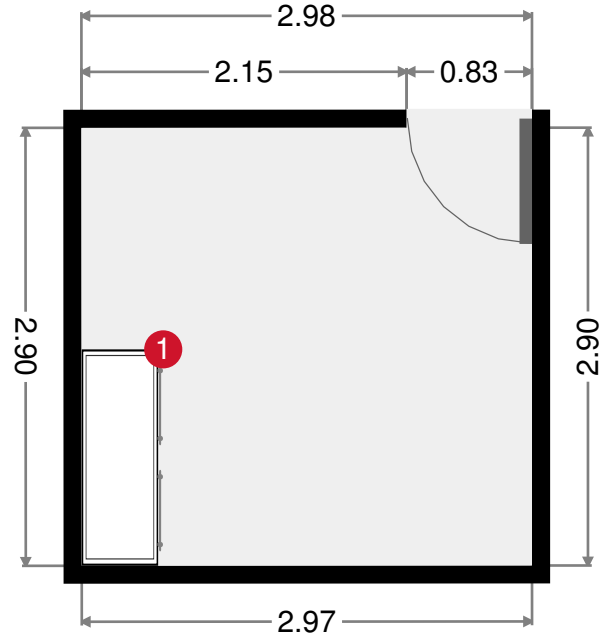
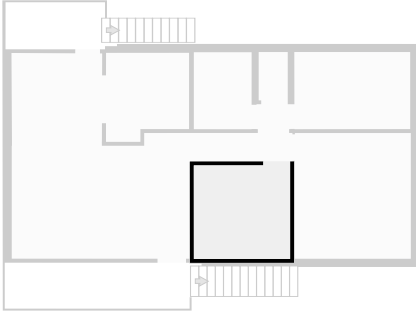


THIS FLOORPLAN IS PROVIDED WITHOUT WARRANTY OF ANY KIND. RAY WHITE ROCKHAMPTON DISCLAIMS ANY WARRANTY INCLUDING, WITHOUT LIMITATION, SATISFACTORY QUALITY OR ACCURACY OF DIMENSIONS. ALL CARE IS TAKEN TO ENSURE ACCURACY BUT MEASUREMENTS, POSITIONING AND PLACEMENTS CANNOT BE GUARANTEED.



# Bedroom

Width: 2.89 m  
Length: 2.98 m  
Area: 8.62 m<sup>2</sup>  
Perimeter: 11.75 m  
Ceiling Height: 2.34 m



1



Chest of Drawers

- Height: 2.33 m

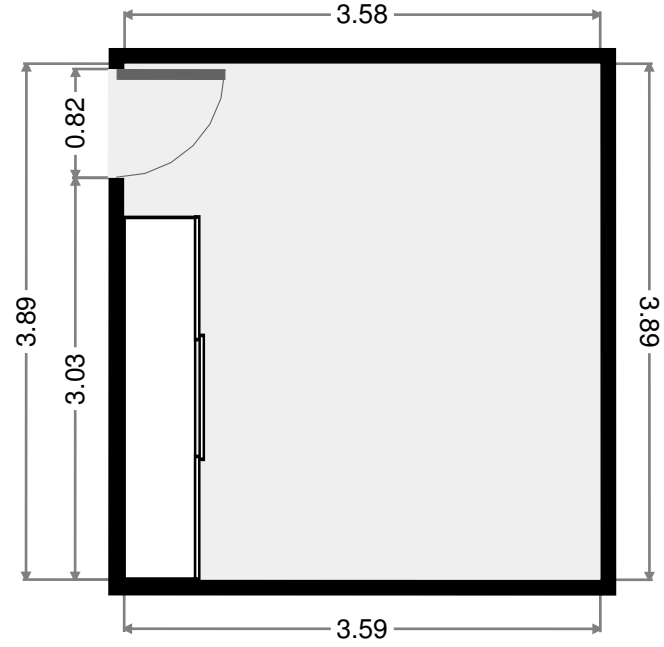
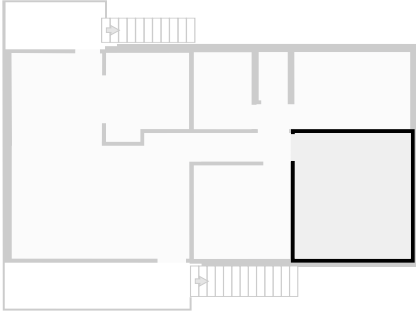


THIS FLOORPLAN IS PROVIDED WITHOUT WARRANTY OF ANY KIND. RAY WHITE ROCKHAMPTON DISCLAIMS ANY WARRANTY INCLUDING, WITHOUT LIMITATION, SATISFACTORY QUALITY OR ACCURACY OF DIMENSIONS. ALL CARE IS TAKEN TO ENSURE ACCURACY BUT MEASUREMENTS, POSITIONING AND PLACEMENTS CANNOT BE GUARANTEED.



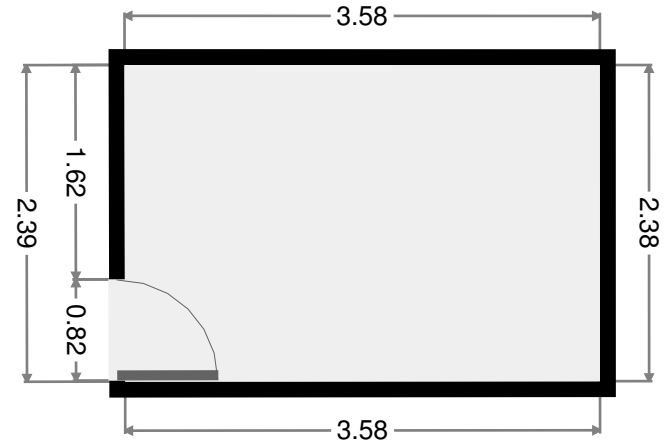
# Master Bedroom

Width: 3.59 m  
 Length: 3.89 m  
 Area: 13.95 m<sup>2</sup>  
 Perimeter: 14.95 m  
 Ceiling Height: 2.34 m



# Bedroom

Width: 2.38 m  
 Length: 3.58 m  
 Area: 8.54 m<sup>2</sup>  
 Perimeter: 11.93 m  
 Ceiling Height: 2.34 m

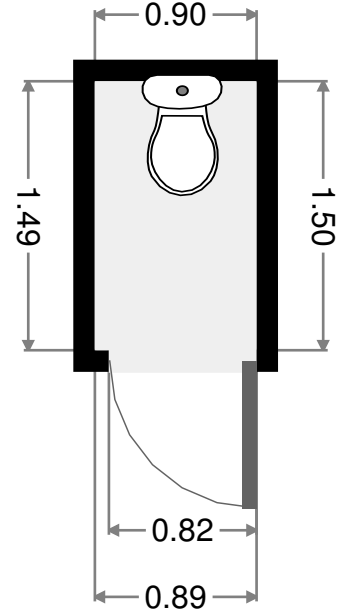
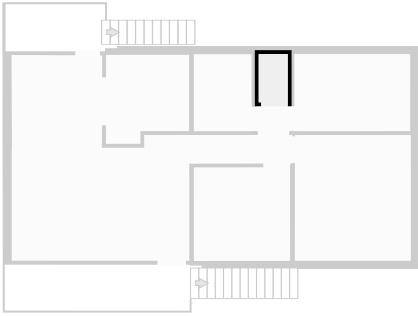


THIS FLOORPLAN IS PROVIDED WITHOUT WARRANTY OF ANY KIND. RAY WHITE ROCKHAMPTON DISCLAIMS ANY WARRANTY INCLUDING, WITHOUT LIMITATION, SATISFACTORY QUALITY OR ACCURACY OF DIMENSIONS. ALL CARE IS TAKEN TO ENSURE ACCURACY BUT MEASUREMENTS, POSITIONING AND PLACEMENTS CANNOT BE GUARANTEED.

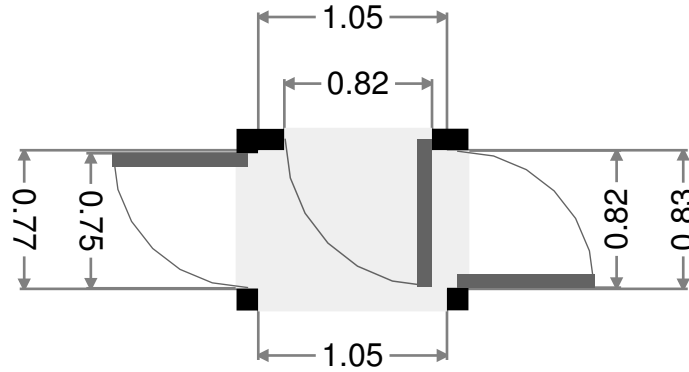
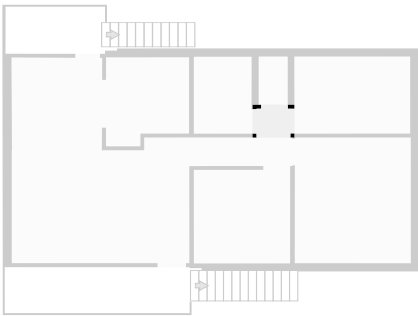


# Toilet

Width: 0.90 m  
 Length: 1.50 m  
 Area: 1.34 m<sup>2</sup>  
 Perimeter: 4.78 m



Width: 0.77 m  
 Length: 1.05 m  
 Area: 0.81 m<sup>2</sup>  
 Perimeter: 3.64 m

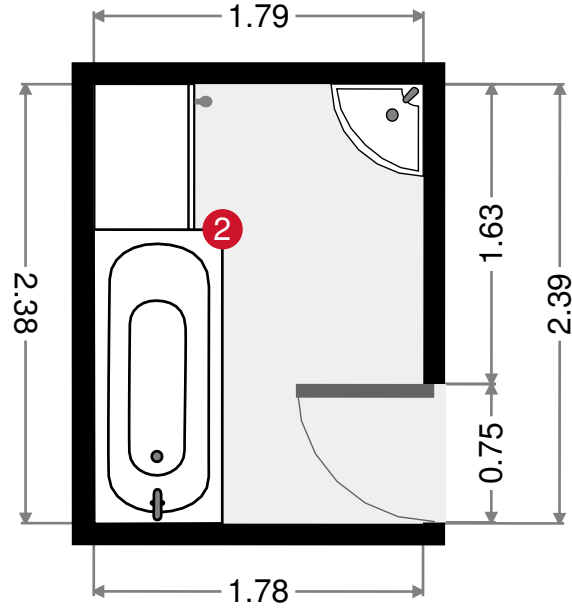
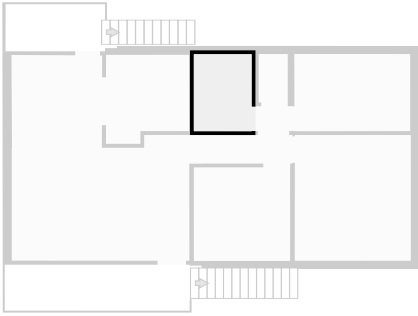


THIS FLOORPLAN IS PROVIDED WITHOUT WARRANTY OF ANY KIND. RAY WHITE ROCKHAMPTON DISCLAIMS ANY WARRANTY INCLUDING, WITHOUT LIMITATION, SATISFACTORY QUALITY OR ACCURACY OF DIMENSIONS. ALL CARE IS TAKEN TO ENSURE ACCURACY BUT MEASUREMENTS, POSITIONING AND PLACEMENTS CANNOT BE GUARANTEED.

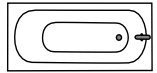


# Bath

Width: 1.79 m  
Length: 2.39 m  
Area: 4.25 m<sup>2</sup>  
Perimeter: 8.33 m



2



Back-to-wall Bath

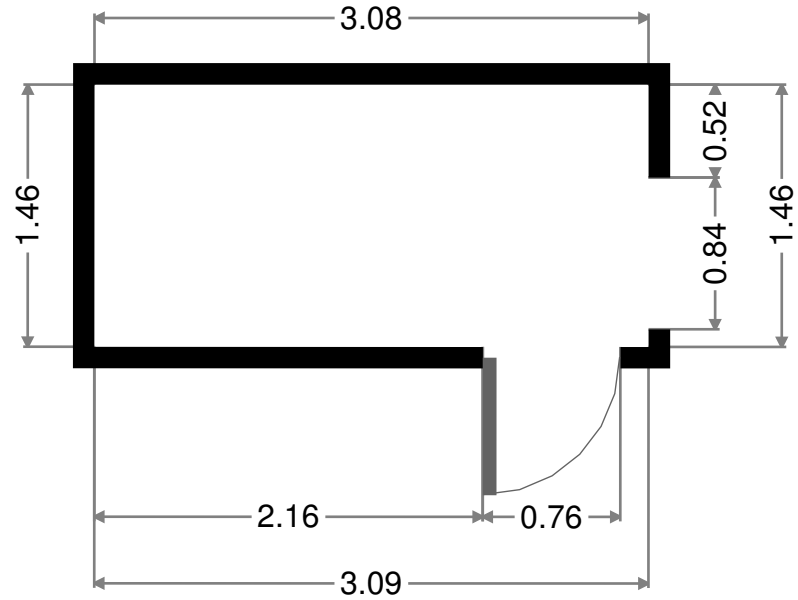
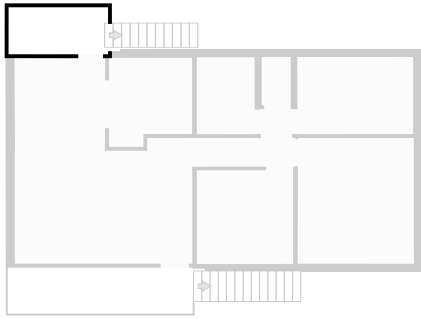
- Height: 2.39 m



THIS FLOORPLAN IS PROVIDED WITHOUT WARRANTY OF ANY KIND. RAY WHITE ROCKHAMPTON DISCLAIMS ANY WARRANTY INCLUDING, WITHOUT LIMITATION, SATISFACTORY QUALITY OR ACCURACY OF DIMENSIONS. ALL CARE IS TAKEN TO ENSURE ACCURACY BUT MEASUREMENTS, POSITIONING AND PLACEMENTS CANNOT BE GUARANTEED.

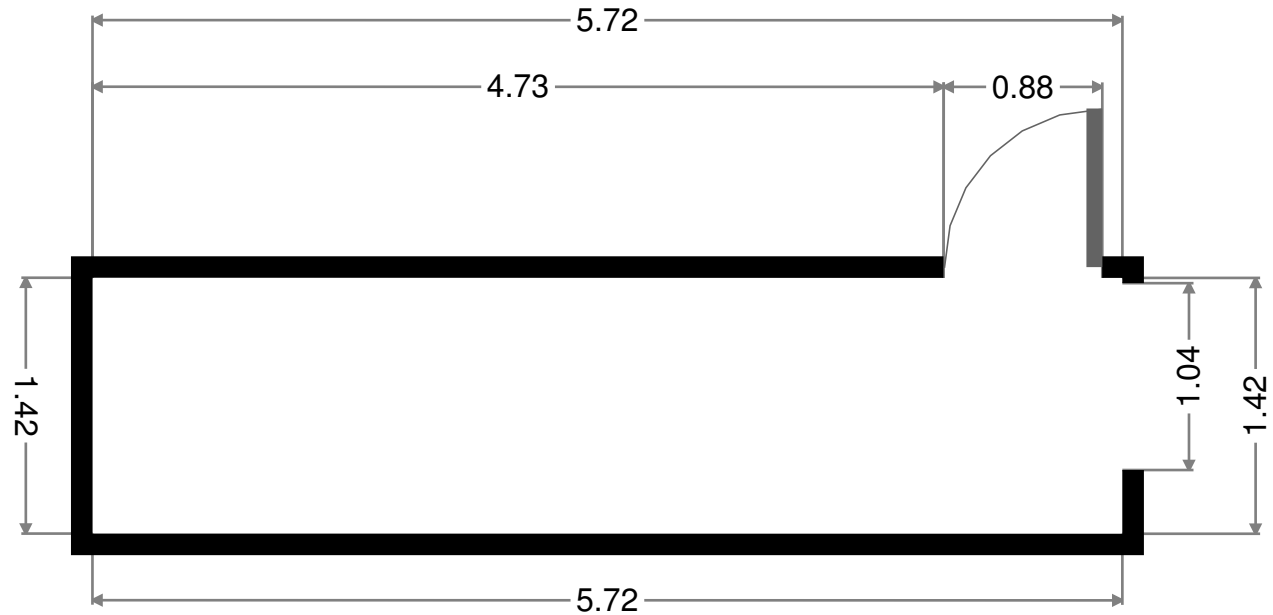
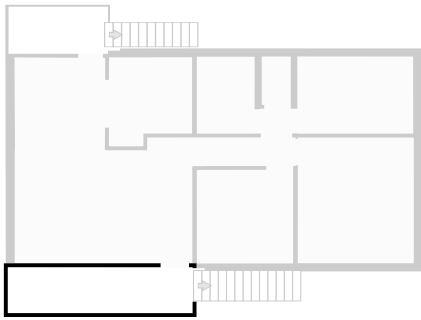
# Balcony

Width: 1.46 m  
 Length: 3.09 m  
 Area: 4.48 m<sup>2</sup>  
 Perimeter: 9.07 m



# Balcony

Width: 1.42 m  
 Length: 5.72 m  
 Area: 8.13 m<sup>2</sup>  
 Perimeter: 14.28 m



THIS FLOORPLAN IS PROVIDED WITHOUT WARRANTY OF ANY KIND. RAY WHITE ROCKHAMPTON DISCLAIMS ANY WARRANTY INCLUDING, WITHOUT LIMITATION, SATISFACTORY QUALITY OR ACCURACY OF DIMENSIONS. ALL CARE IS TAKEN TO ENSURE ACCURACY BUT MEASUREMENTS, POSITIONING AND PLACEMENTS CANNOT BE GUARANTEED.

