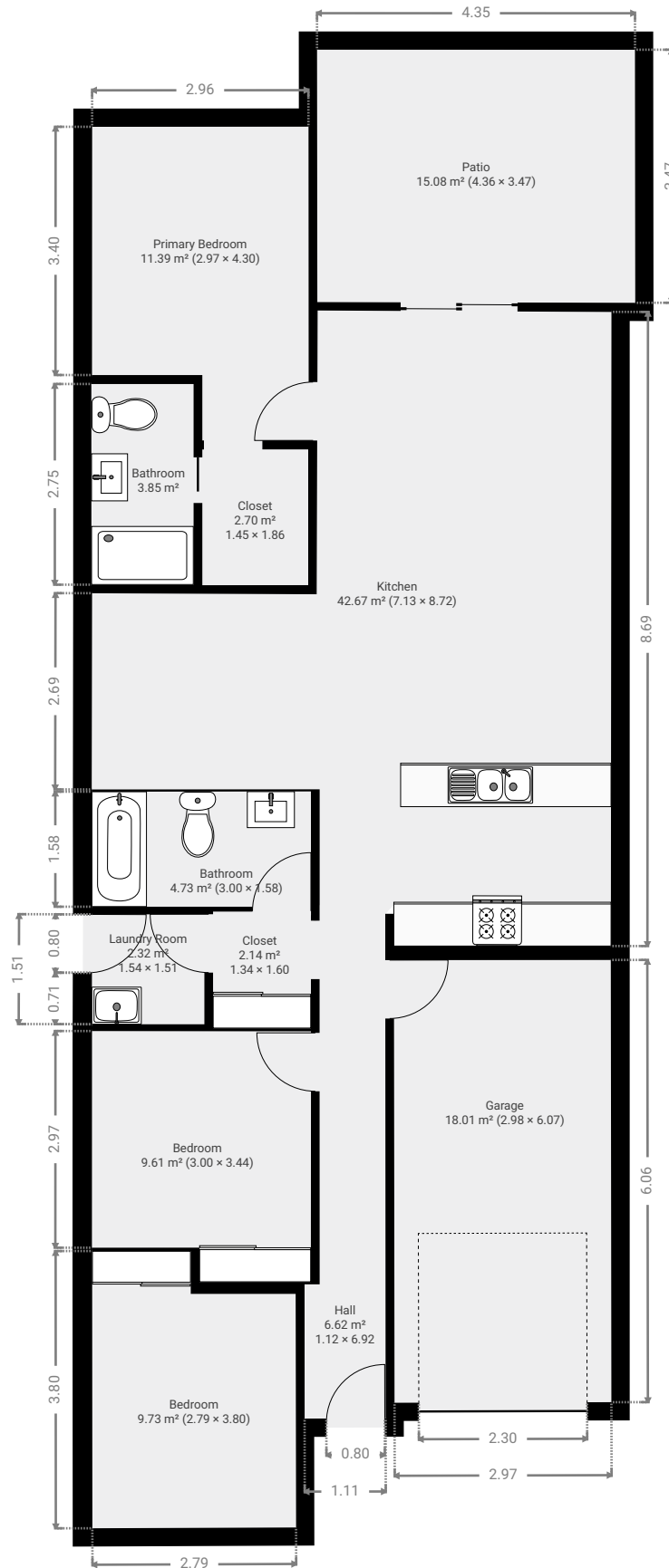


TOTAL AREA: 128.78 m² • LIVING AREA: 110.77 m² • FLOORS: 1 • ROOMS: 12

▼ Ground Floor

TOTAL AREA: 128.78 m² • LIVING AREA: 110.77 m² • ROOMS: 12



THIS FLOORPLAN IS PROVIDED WITHOUT WARRANTY OF ANY KIND. SENSOPIA DISCLAIMS ANY WARRANTY INCLUDING, WITHOUT LIMITATION, SATISFACTORY QUALITY OR ACCURACY OF DIMENSIONS.

