

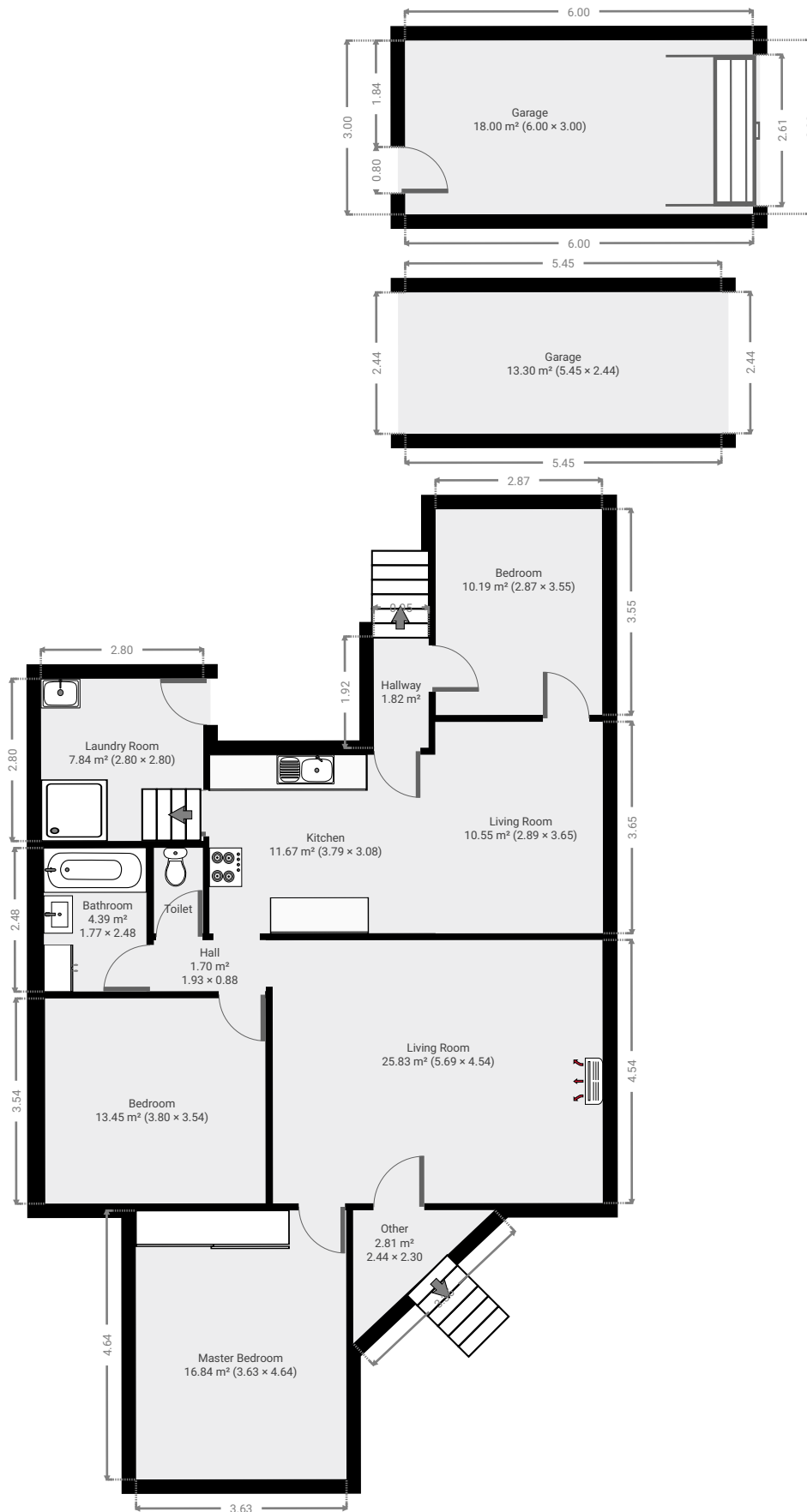
209 Berserker Street

Created on
2021-08-02

Floors
1

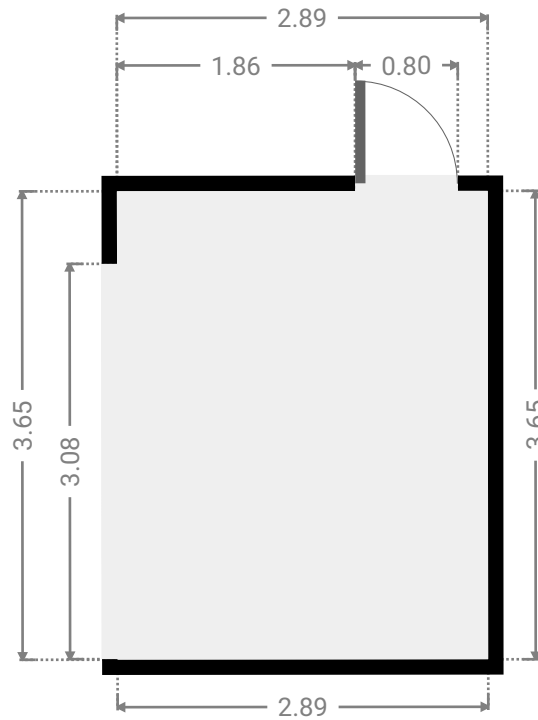
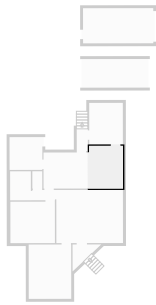


▼ Ground Floor



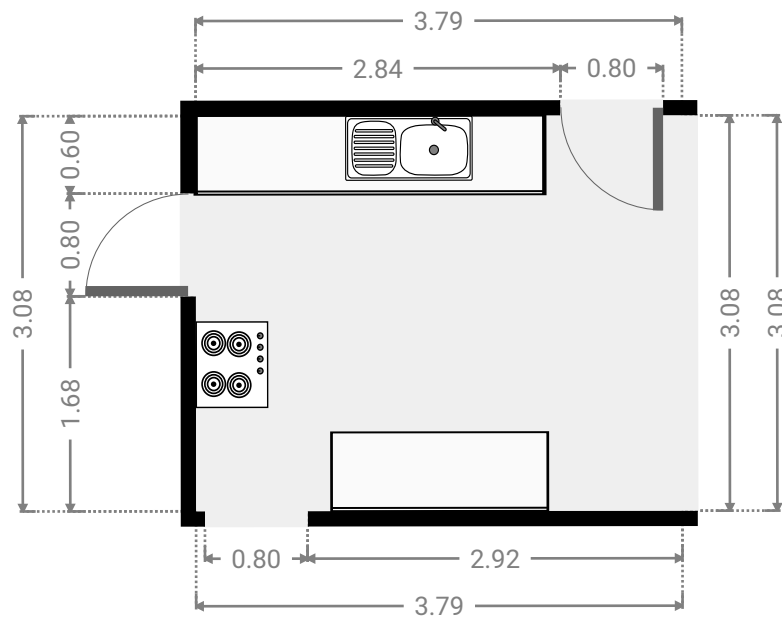
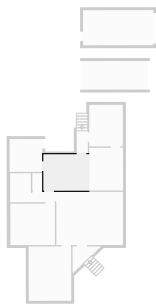
▼ Living Room
Ground Floor

WIDTH: 2.89 m • LENGTH: 3.65 m
AREA: 10.55 m² • PERIMETER: 13.08 m



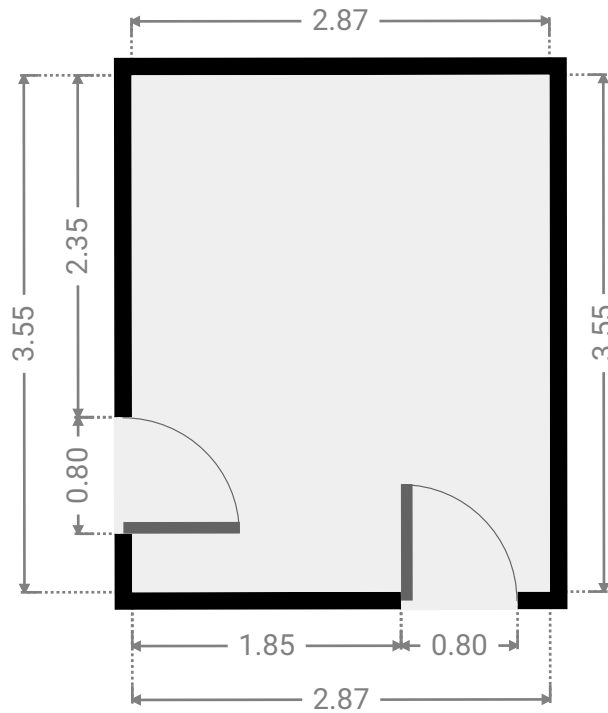
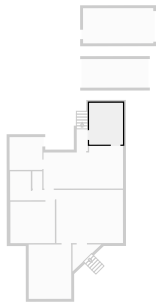
▼ Kitchen
Ground Floor

WIDTH: 3.79 m • LENGTH: 3.08 m
AREA: 11.67 m² • PERIMETER: 13.74 m



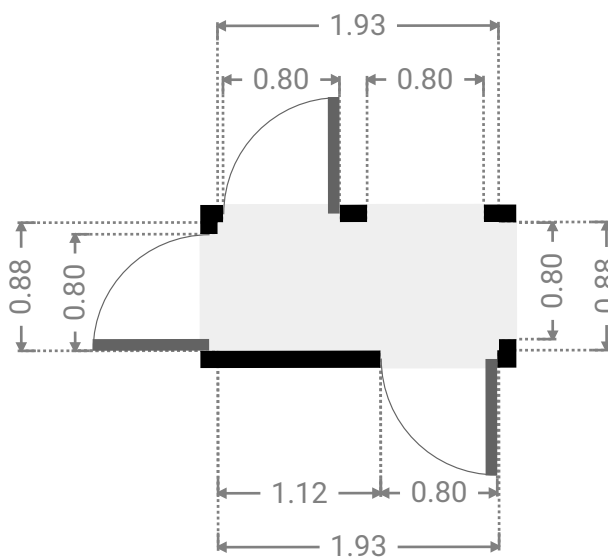
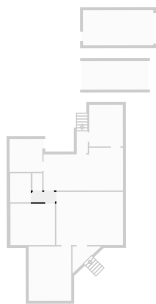
▼ **Bedroom**
Ground Floor

WIDTH: 2.87 m • LENGTH: 3.55 m
AREA: 10.19 m² • PERIMETER: 12.84 m



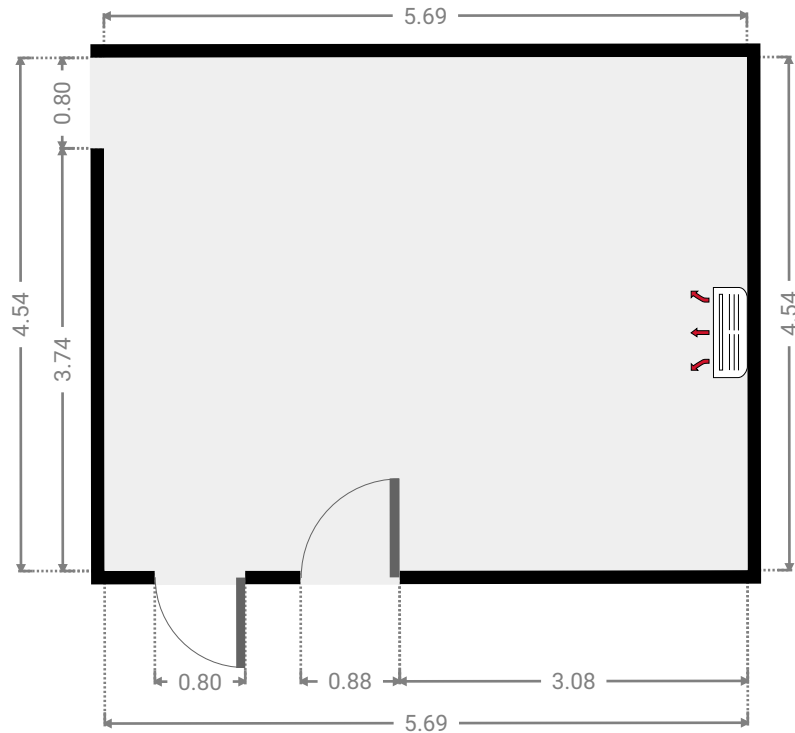
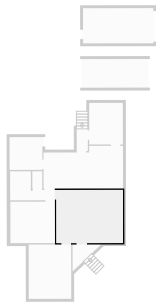
▼ **Hall**
Ground Floor

WIDTH: 1.93 m • LENGTH: 0.88 m
AREA: 1.70 m² • PERIMETER: 5.62 m



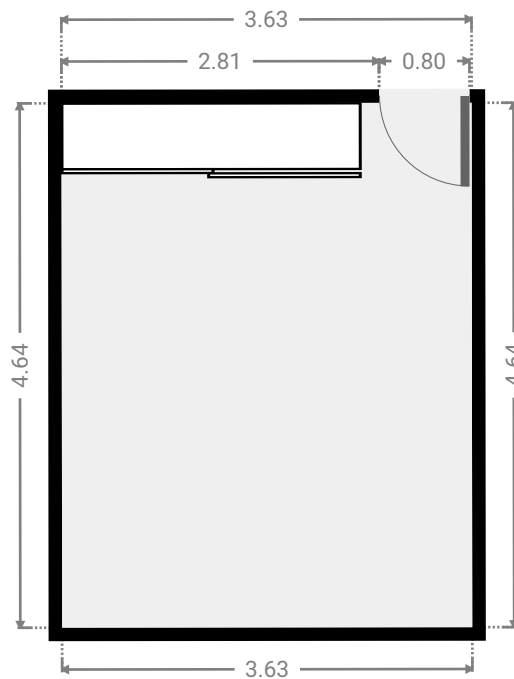
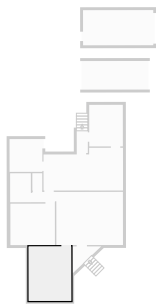
▼ Living Room
Ground Floor

WIDTH: 5.69 m • LENGTH: 4.54 m
AREA: 25.83 m² • PERIMETER: 20.46 m



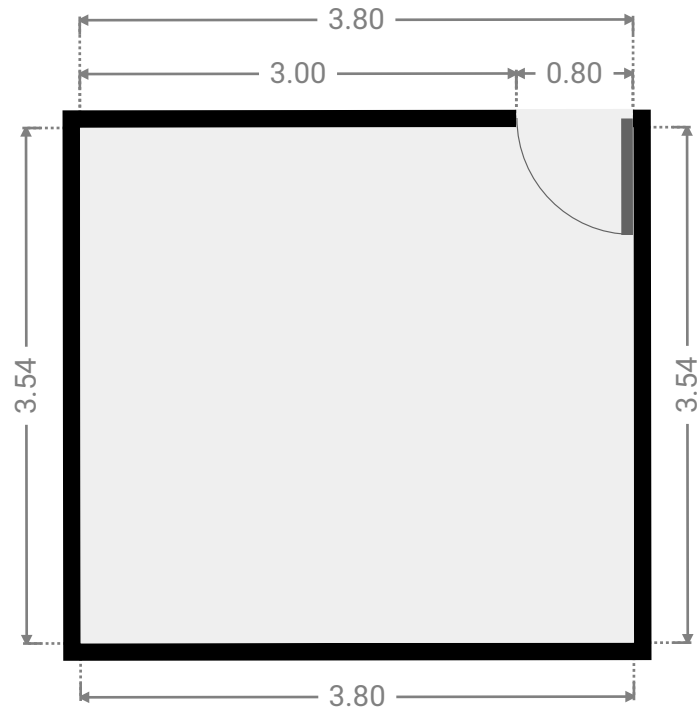
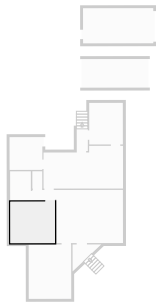
▼ Master Bedroom
Ground Floor

WIDTH: 3.63 m • LENGTH: 4.64 m
AREA: 16.84 m² • PERIMETER: 16.54 m



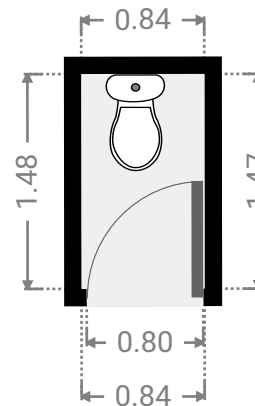
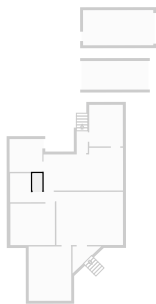
▼ **Bedroom**
Ground Floor

WIDTH: 3.80 m • LENGTH: 3.54 m
AREA: 13.45 m² • PERIMETER: 14.68 m



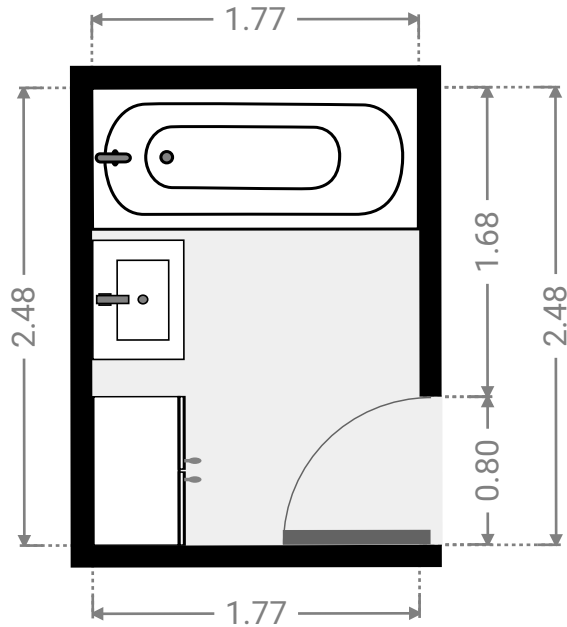
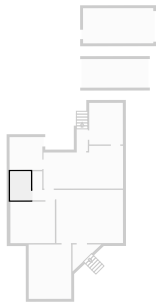
▼ **Toilet**
Ground Floor

WIDTH: 0.84 m • LENGTH: 1.48 m
AREA: 1.25 m² • PERIMETER: 4.64 m



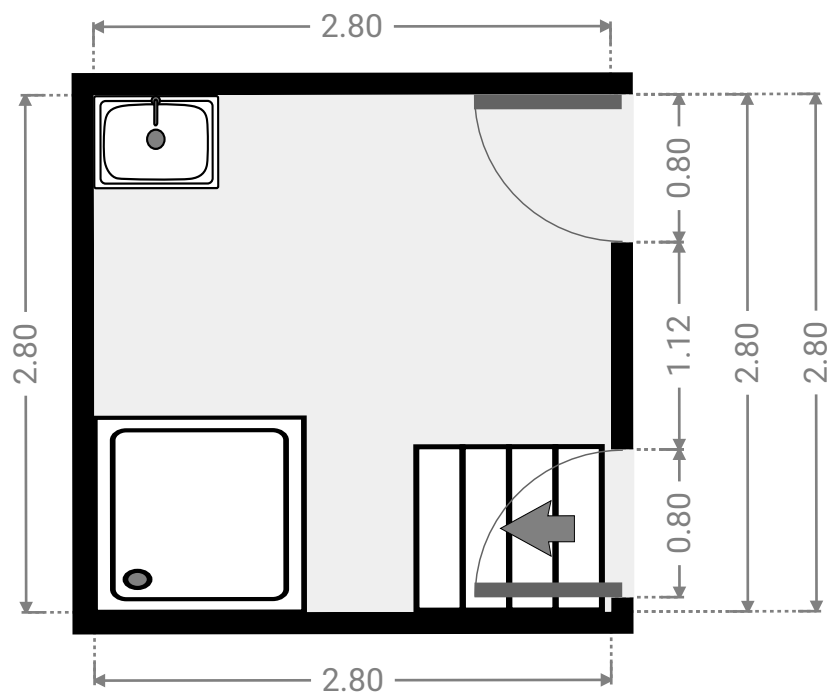
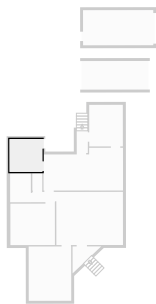
▼ **Bathroom**
Ground Floor

WIDTH: 1.77 m • LENGTH: 2.48 m
AREA: 4.39 m² • PERIMETER: 8.50 m



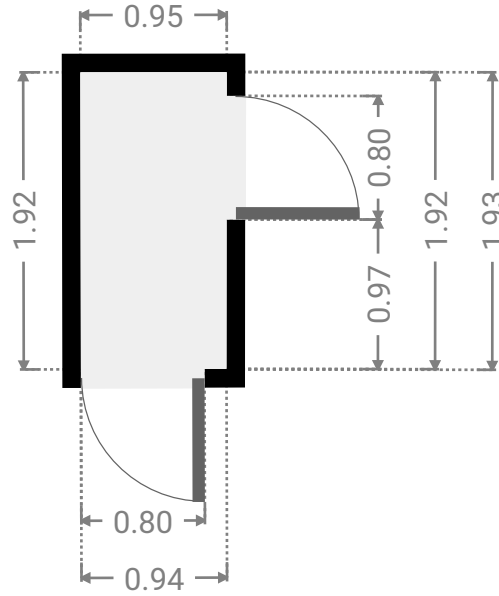
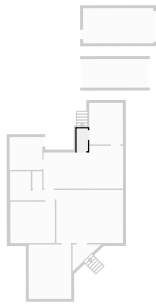
▼ **Laundry Room**
Ground Floor

WIDTH: 2.80 m • LENGTH: 2.80 m
AREA: 7.84 m² • PERIMETER: 11.20 m



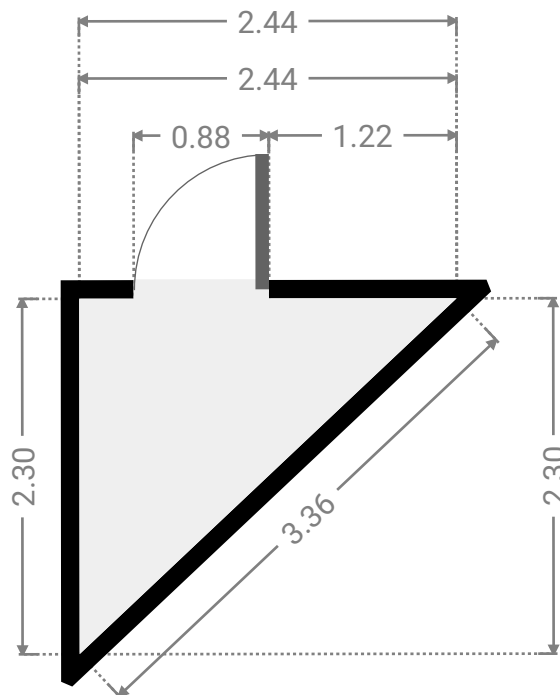
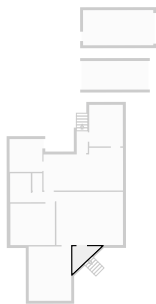
▼ **Hallway**
Ground Floor

WIDTH: 0.95 m • LENGTH: 1.93 m
AREA: 1.82 m² • PERIMETER: 5.73 m



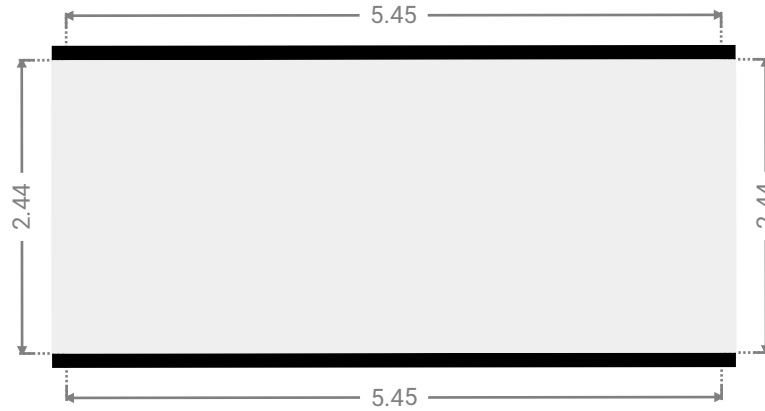
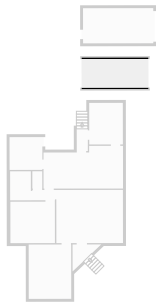
▼ **Other**
Ground Floor

WIDTH: 2.44 m • LENGTH: 2.30 m
AREA: 2.81 m² • PERIMETER: 8.10 m



▼ Garage
Ground Floor

WIDTH: 5.45 m • LENGTH: 2.44 m
AREA: 13.30 m² • PERIMETER: 15.78 m



▼ Garage
Ground Floor

WIDTH: 6.00 m • LENGTH: 3.00 m
AREA: 18.00 m² • PERIMETER: 18.00 m

