

202 Houlihan Street

SUBMITTED BY

Ray White Rockhampton Casey
stockers@cqoz.com

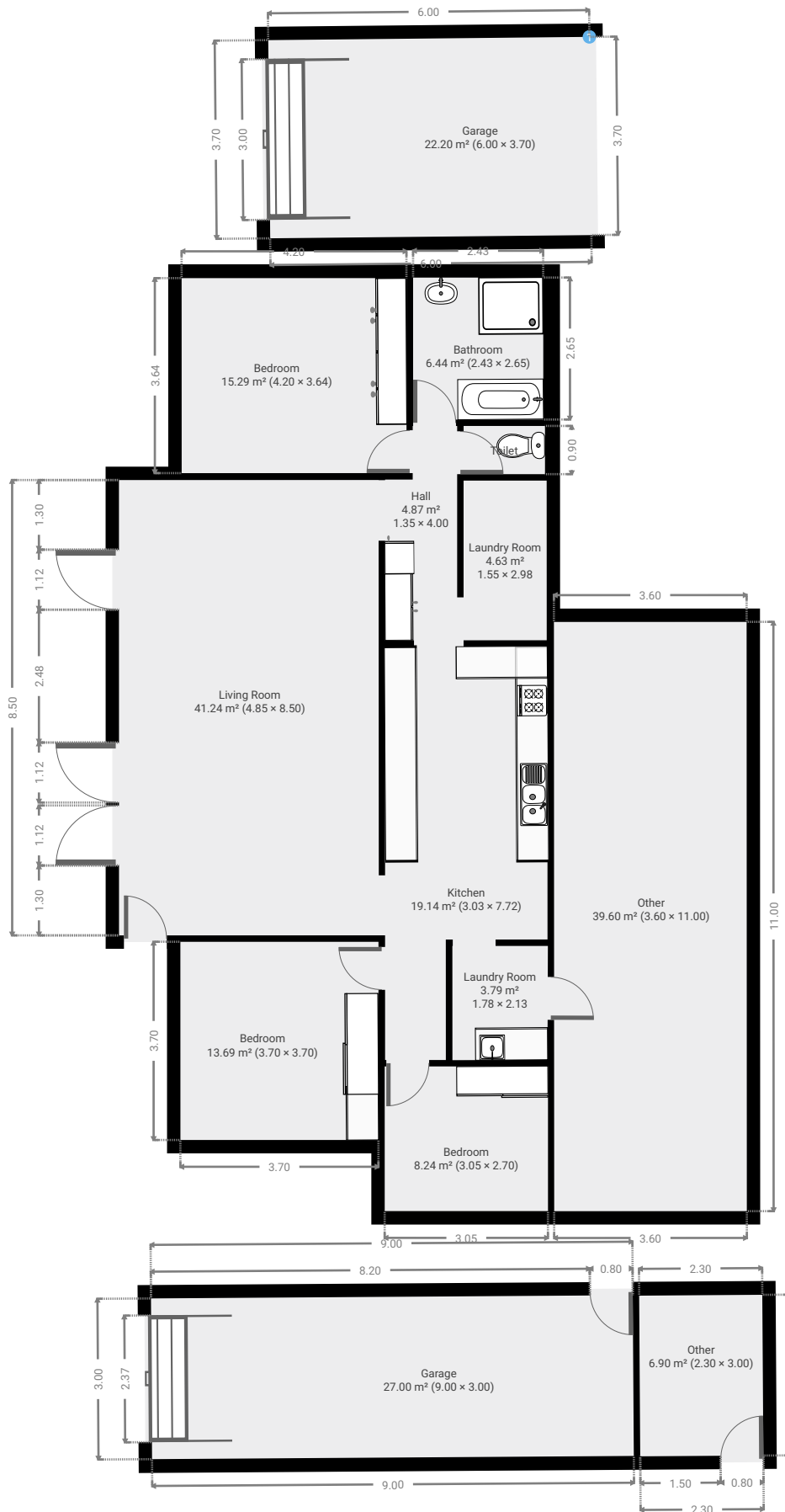
CREATED ON

2022-04-06

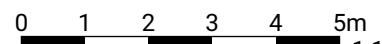
Floors

1

▼ Ground Floor



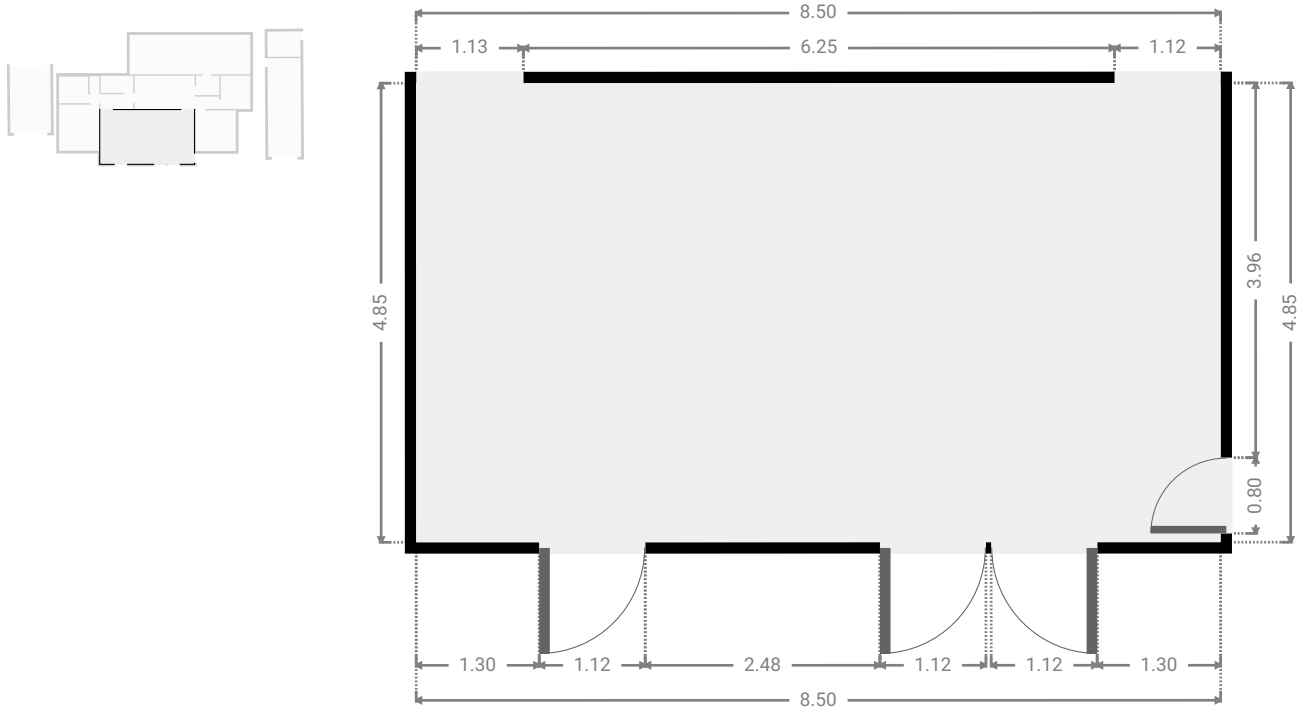
THIS FLOORPLAN IS PROVIDED WITHOUT WARRANTY OF ANY KIND. SENSOPIA DISCLAIMS ANY WARRANTY INCLUDING, WITHOUT LIMITATION, SATISFACTORY QUALITY OR ACCURACY OF DIMENSIONS.



FLOORS: 1

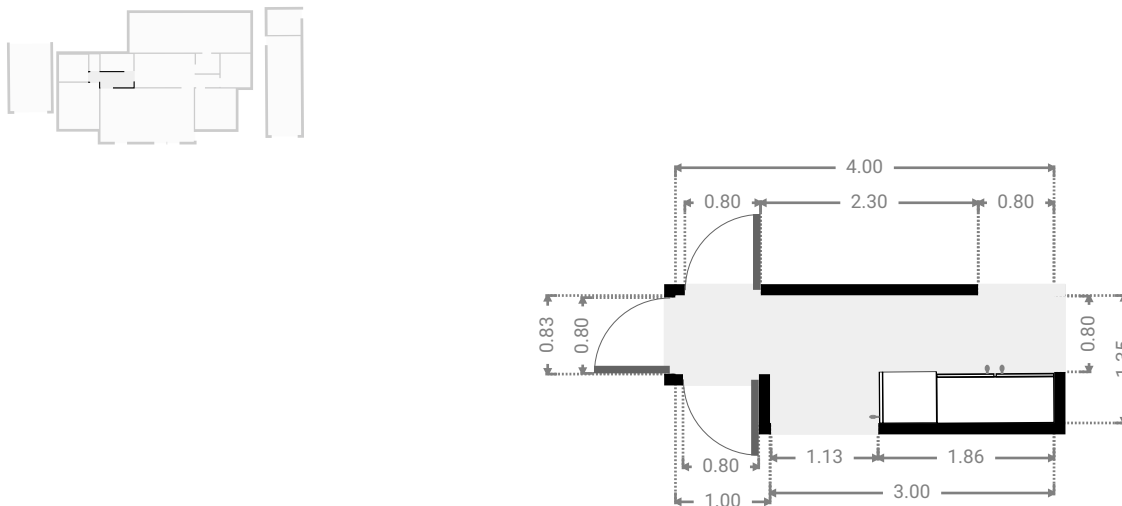
▼ **Living Room**
Ground Floor

WIDTH: 8.50 m • LENGTH: 4.85 m
AREA: 41.24 m² • PERIMETER: 26.70 m



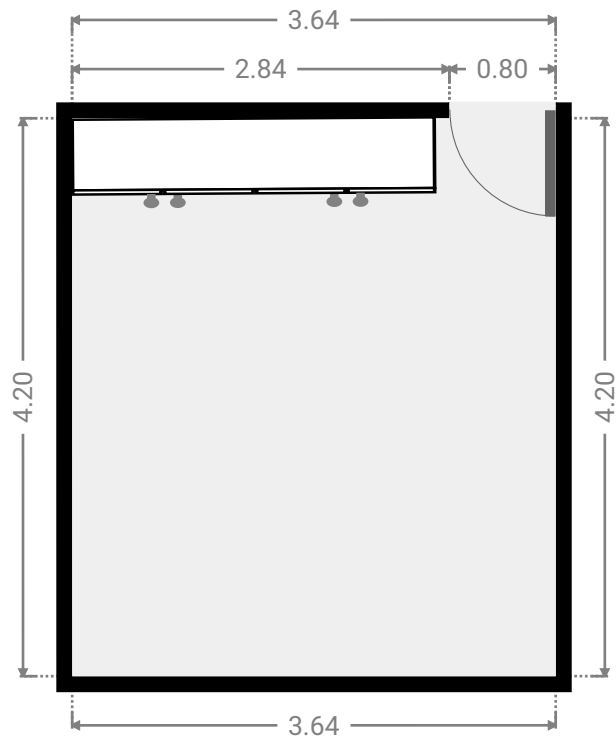
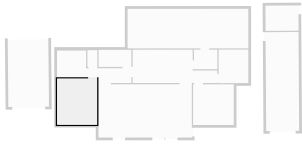
▼ **Hall**
Ground Floor

WIDTH: 4.00 m • LENGTH: 1.35 m
AREA: 4.87 m² • PERIMETER: 10.69 m



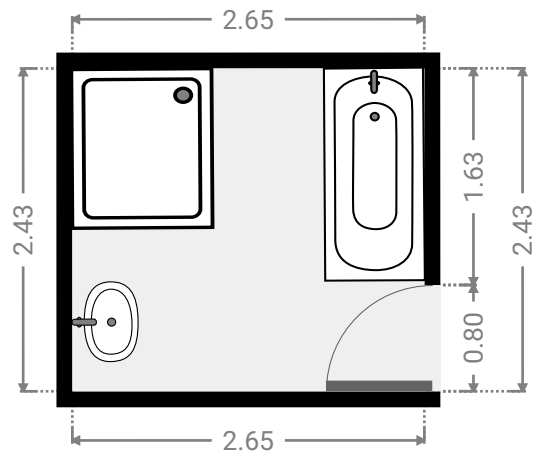
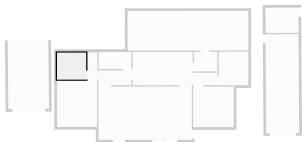
▼ **Bedroom**
Ground Floor

WIDTH: 3.64 m • LENGTH: 4.20 m
AREA: 15.29 m² • PERIMETER: 15.68 m



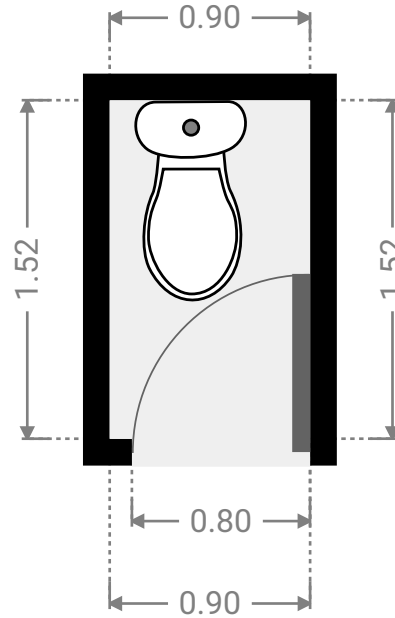
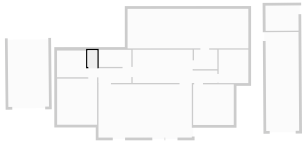
▼ **Bathroom**
Ground Floor

WIDTH: 2.65 m • LENGTH: 2.43 m
AREA: 6.44 m² • PERIMETER: 10.16 m



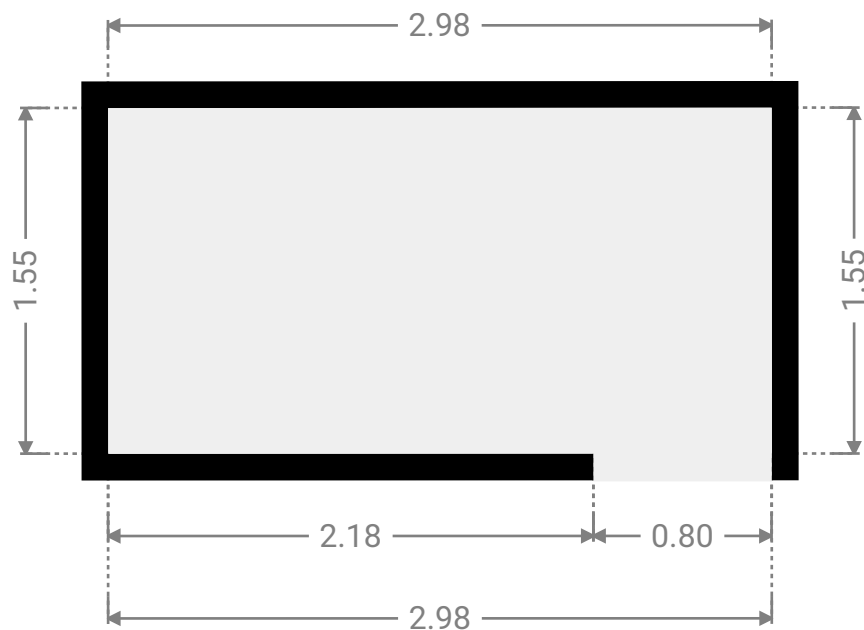
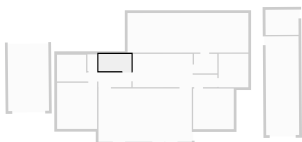
▼ **Toilet**
Ground Floor

WIDTH: 0.90 m • LENGTH: 1.52 m
AREA: 1.37 m² • PERIMETER: 4.84 m



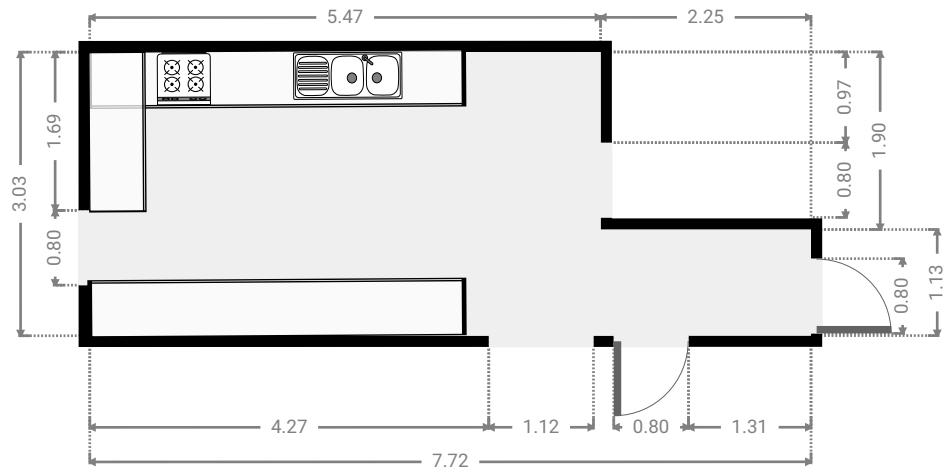
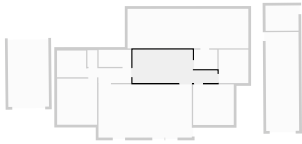
▼ **Laundry Room**
Ground Floor

WIDTH: 2.98 m • LENGTH: 1.55 m
AREA: 4.63 m² • PERIMETER: 9.07 m



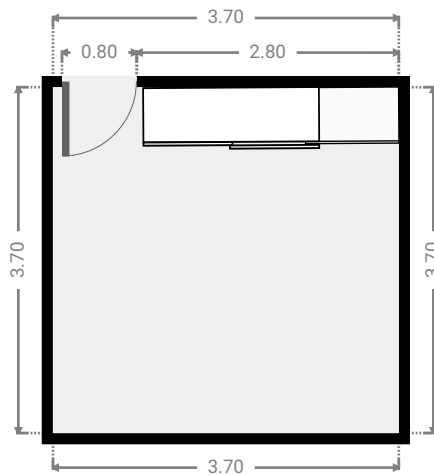
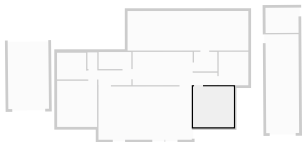
▼ **Kitchen**
Ground Floor

WIDTH: 7.72 m • LENGTH: 3.03 m
AREA: 19.14 m² • PERIMETER: 21.50 m



▼ **Bedroom**
Ground Floor

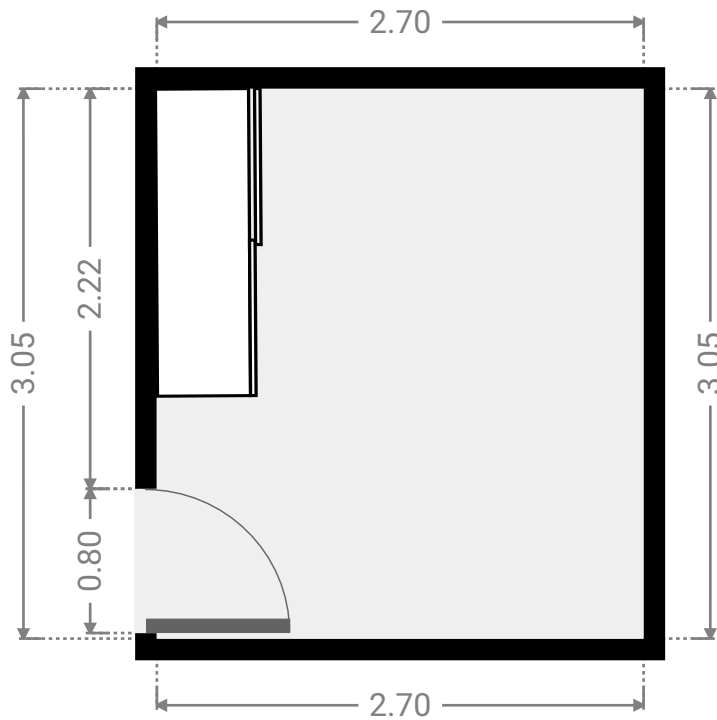
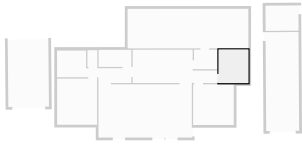
WIDTH: 3.70 m • LENGTH: 3.70 m
AREA: 13.69 m² • PERIMETER: 14.80 m



FLOORS: 1

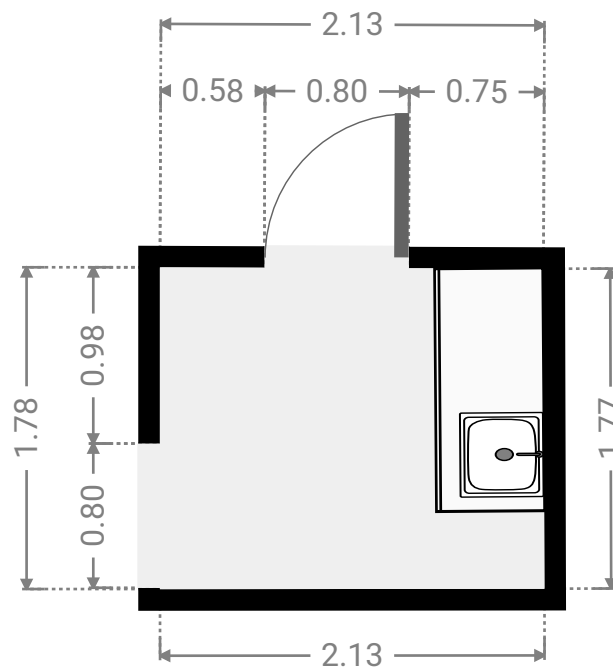
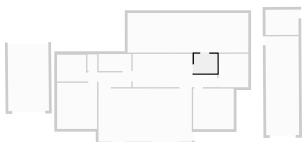
▼ **Bedroom**
Ground Floor

WIDTH: 2.70 m • LENGTH: 3.05 m
AREA: 8.24 m² • PERIMETER: 11.50 m



▼ **Laundry Room**
Ground Floor

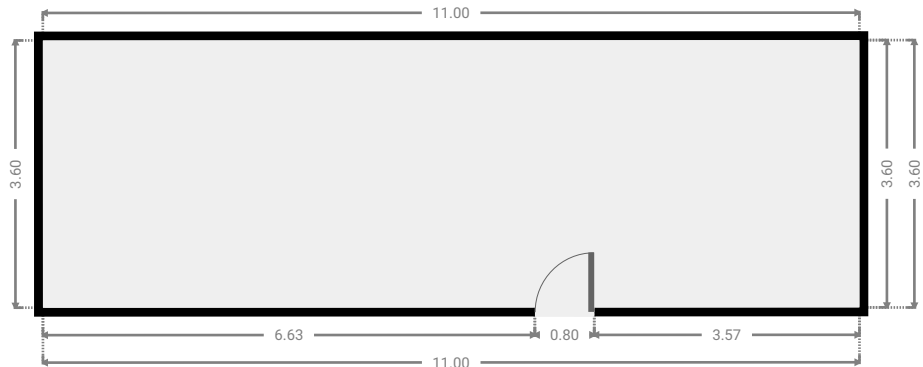
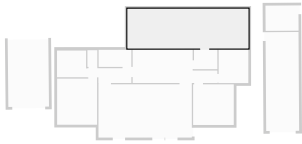
WIDTH: 2.13 m • LENGTH: 1.78 m
AREA: 3.79 m² • PERIMETER: 7.82 m



FLOORS: 1

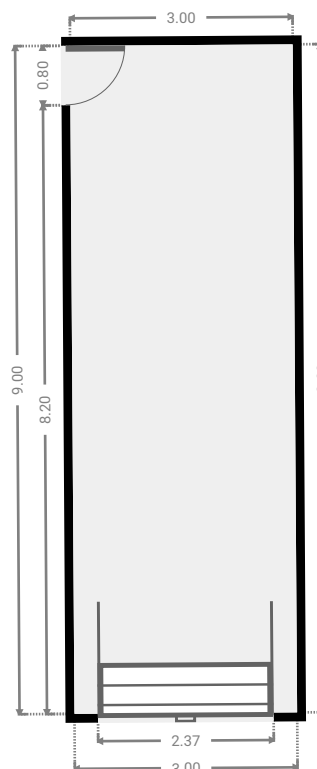
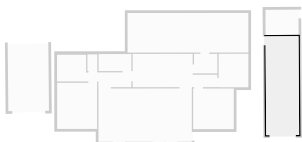
▼ Other
Ground Floor

WIDTH: 11.00 m • LENGTH: 3.60 m
AREA: 39.60 m² • PERIMETER: 29.20 m



▼ Garage
Ground Floor

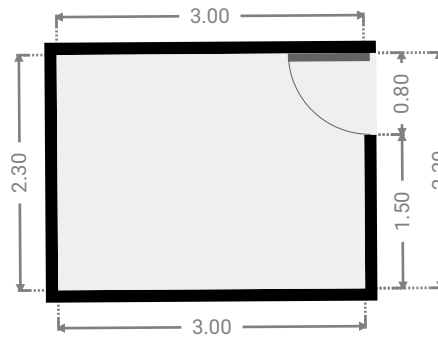
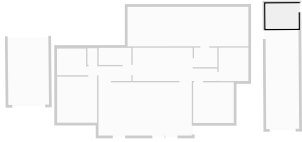
WIDTH: 3.00 m • LENGTH: 9.00 m
AREA: 27.00 m² • PERIMETER: 24.00 m



FLOORS: 1

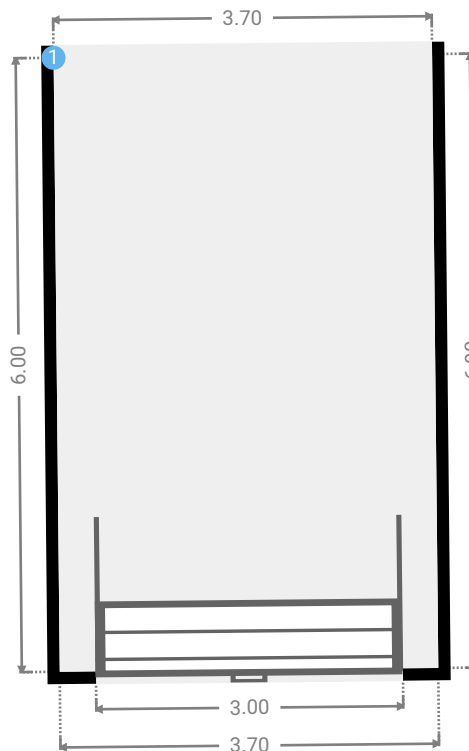
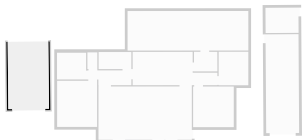
▼ **Other**
Ground Floor

WIDTH: 3.00 m • LENGTH: 2.30 m
AREA: 6.90 m² • PERIMETER: 10.60 m



▼ **Garage**
Ground Floor

WIDTH: 3.70 m • LENGTH: 6.00 m
AREA: 22.20 m² • PERIMETER: 19.40 m



▼ **Garage**/Ground Floor

1 **OPENING**

Height
0.00 m

