

2/200 Elphinstone Street

SUBMITTED BY

Ray White Rockhampton Casey
stockers@cqoz.com

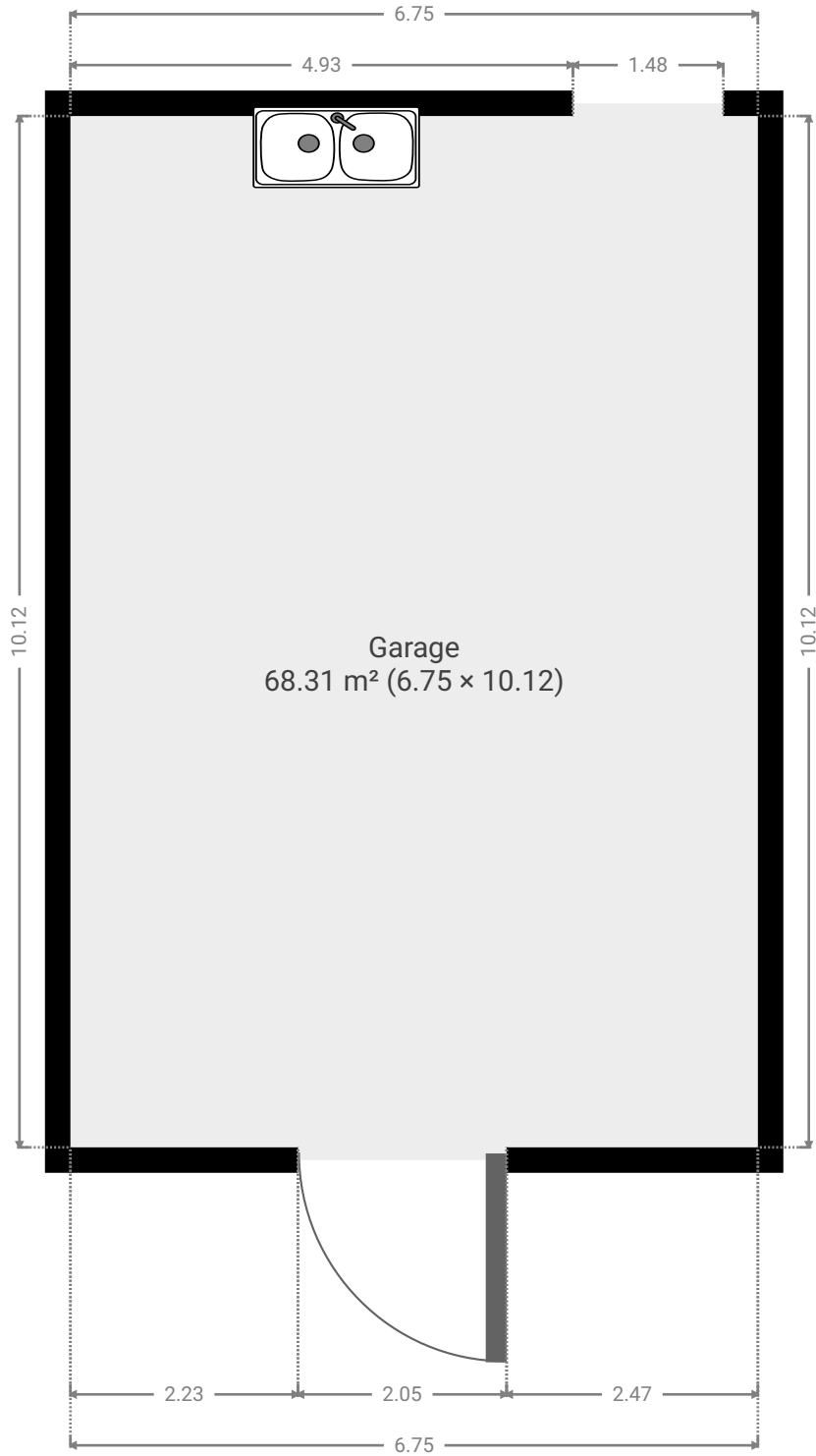
CREATED ON

2022-10-18

Floors

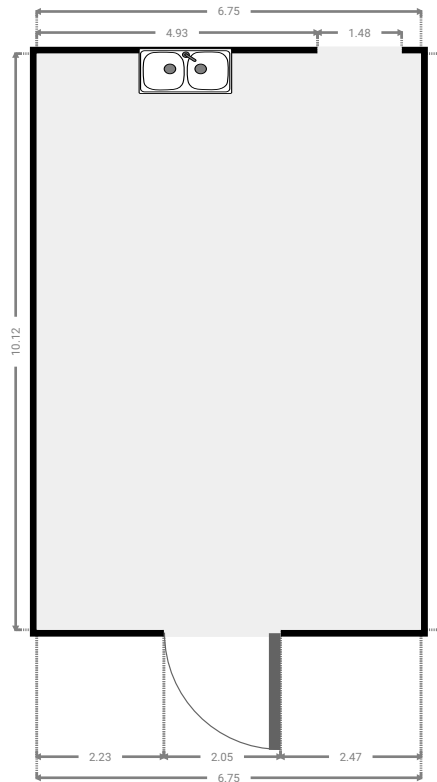
2

▼ Ground Floor

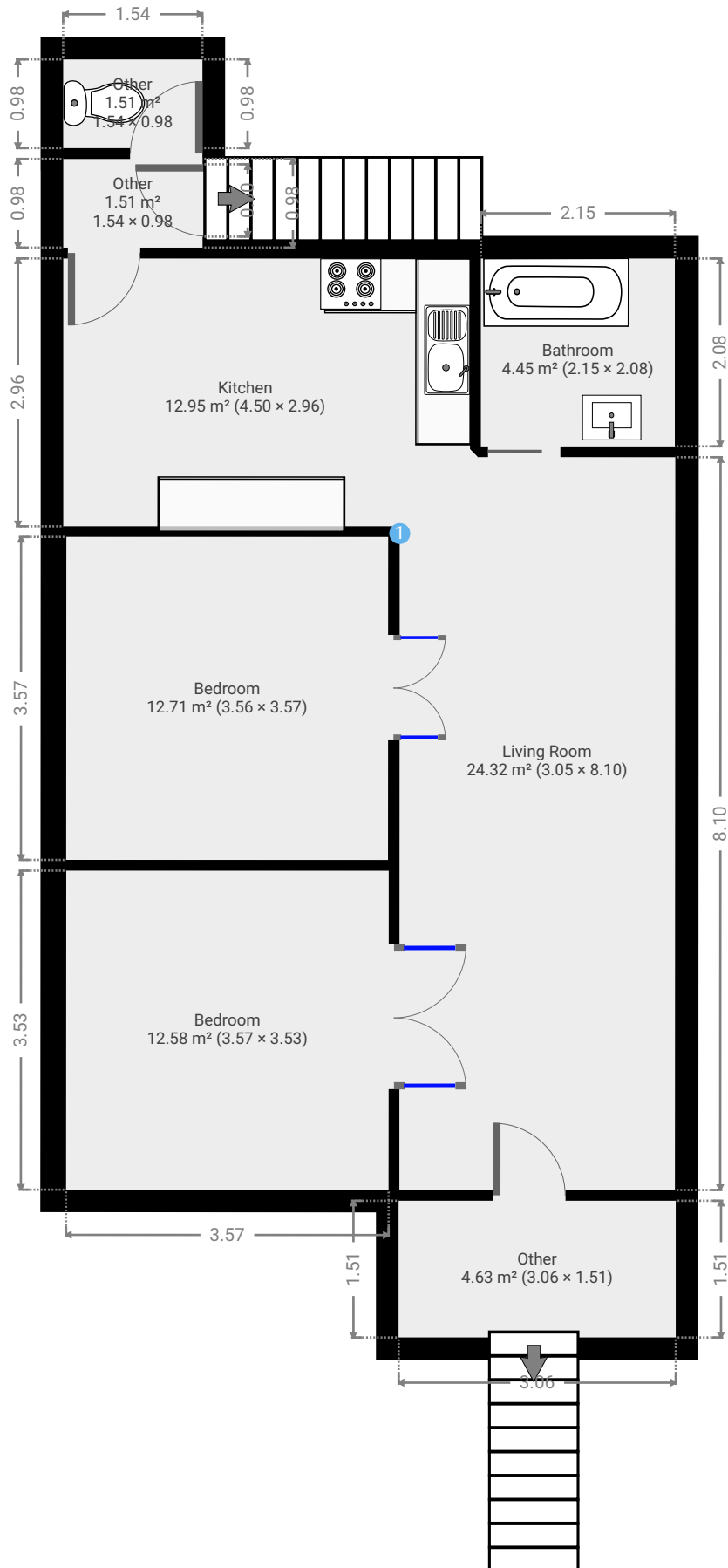


▼ **Garage**
Ground Floor

WIDTH: 6.75 m • LENGTH: 10.12 m
AREA: 68.31 m² • PERIMETER: 33.74 m

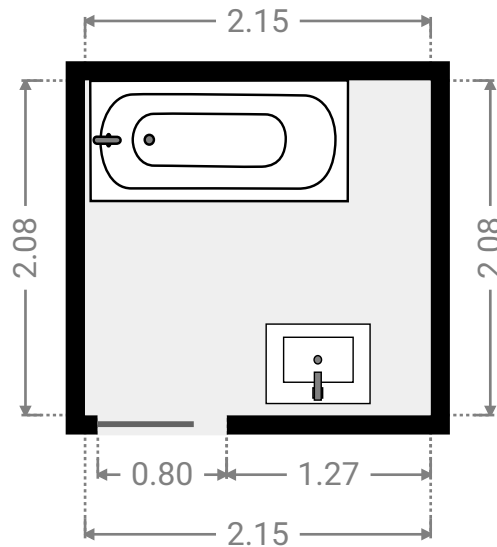
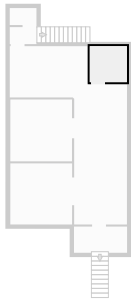


▼ 1st Floor



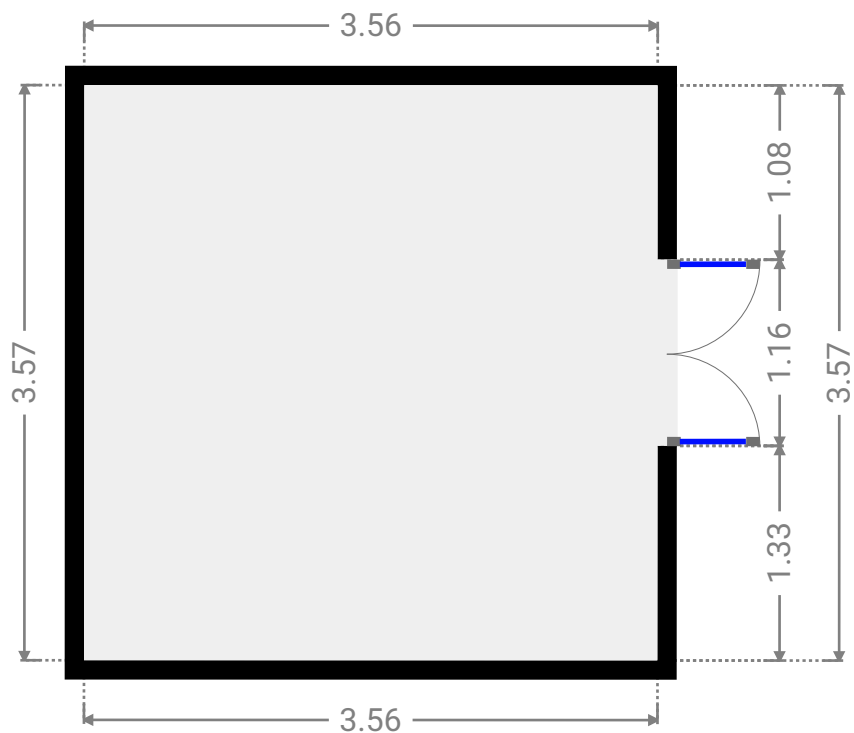
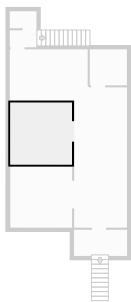
▼ **Bathroom**
1st Floor

WIDTH: 2.15 m • LENGTH: 2.08 m
AREA: 4.45 m² • PERIMETER: 8.44 m



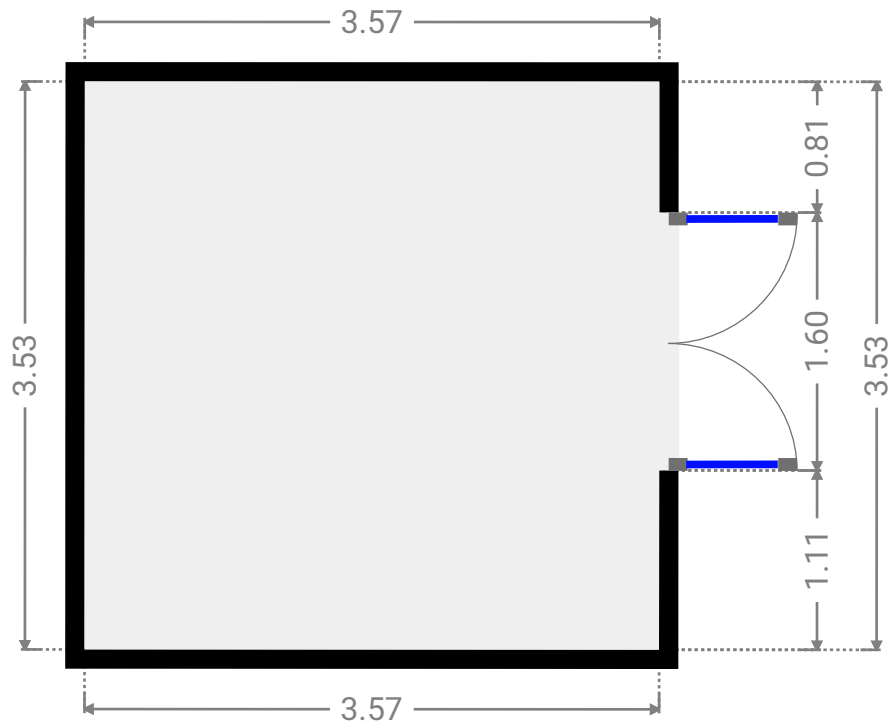
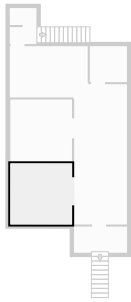
▼ **Bedroom**
1st Floor

WIDTH: 3.56 m • LENGTH: 3.57 m
AREA: 12.71 m² • PERIMETER: 14.26 m



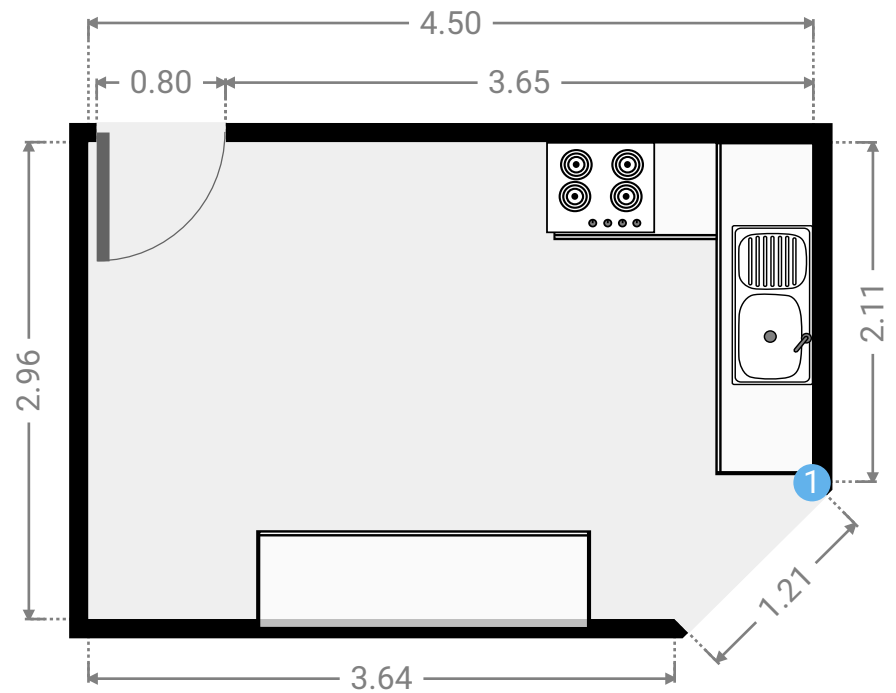
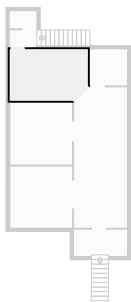
▼ **Bedroom**
1st Floor

WIDTH: 3.57 m • LENGTH: 3.53 m
AREA: 12.58 m² • PERIMETER: 14.18 m



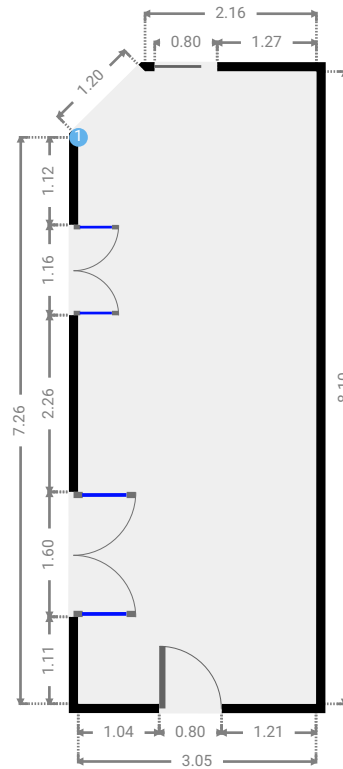
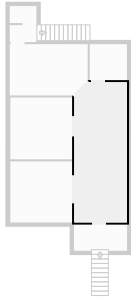
▼ **Kitchen**
1st Floor

WIDTH: 4.50 m • LENGTH: 2.96 m
AREA: 12.95 m² • PERIMETER: 14.42 m



▼ **Living Room**
1st Floor

WIDTH: 3.05 m • LENGTH: 8.10 m
AREA: 24.32 m² • PERIMETER: 21.80 m



▼ **Living Room/1st Floor**

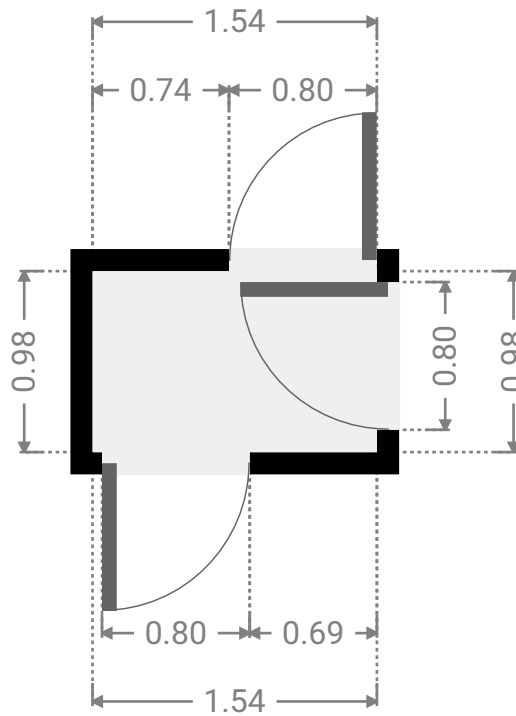
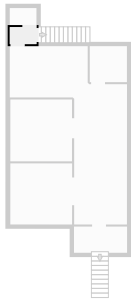
1 **OPENING**

Height
0.00 m



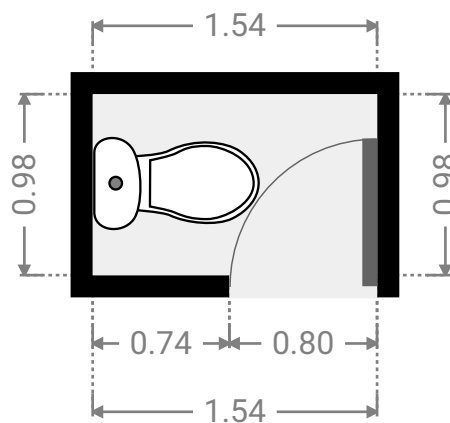
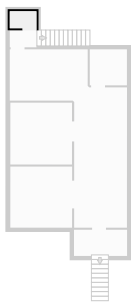
▼ Other
1st Floor

WIDTH: 1.54 m • LENGTH: 0.98 m
AREA: 1.51 m² • PERIMETER: 5.04 m



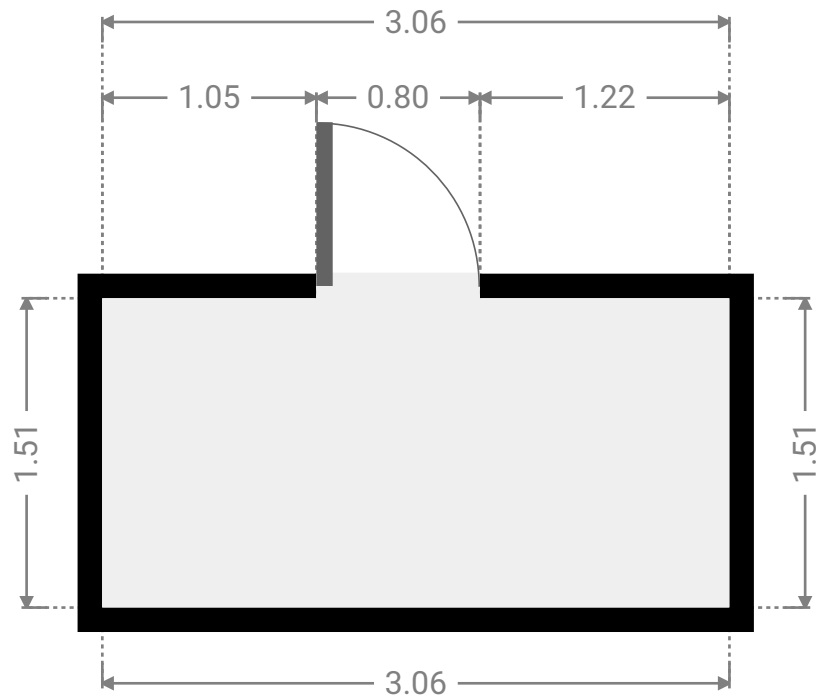
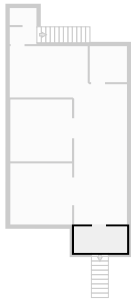
▼ Other
1st Floor

WIDTH: 1.54 m • LENGTH: 0.98 m
AREA: 1.51 m² • PERIMETER: 5.04 m



▼ Other
1st Floor

WIDTH: 3.06 m • LENGTH: 1.51 m
AREA: 4.63 m² • PERIMETER: 9.15 m



1/200 Elphinstone STREET

SUBMITTED BY

Ray White Rockhampton Casey
stockers@cqoz.com

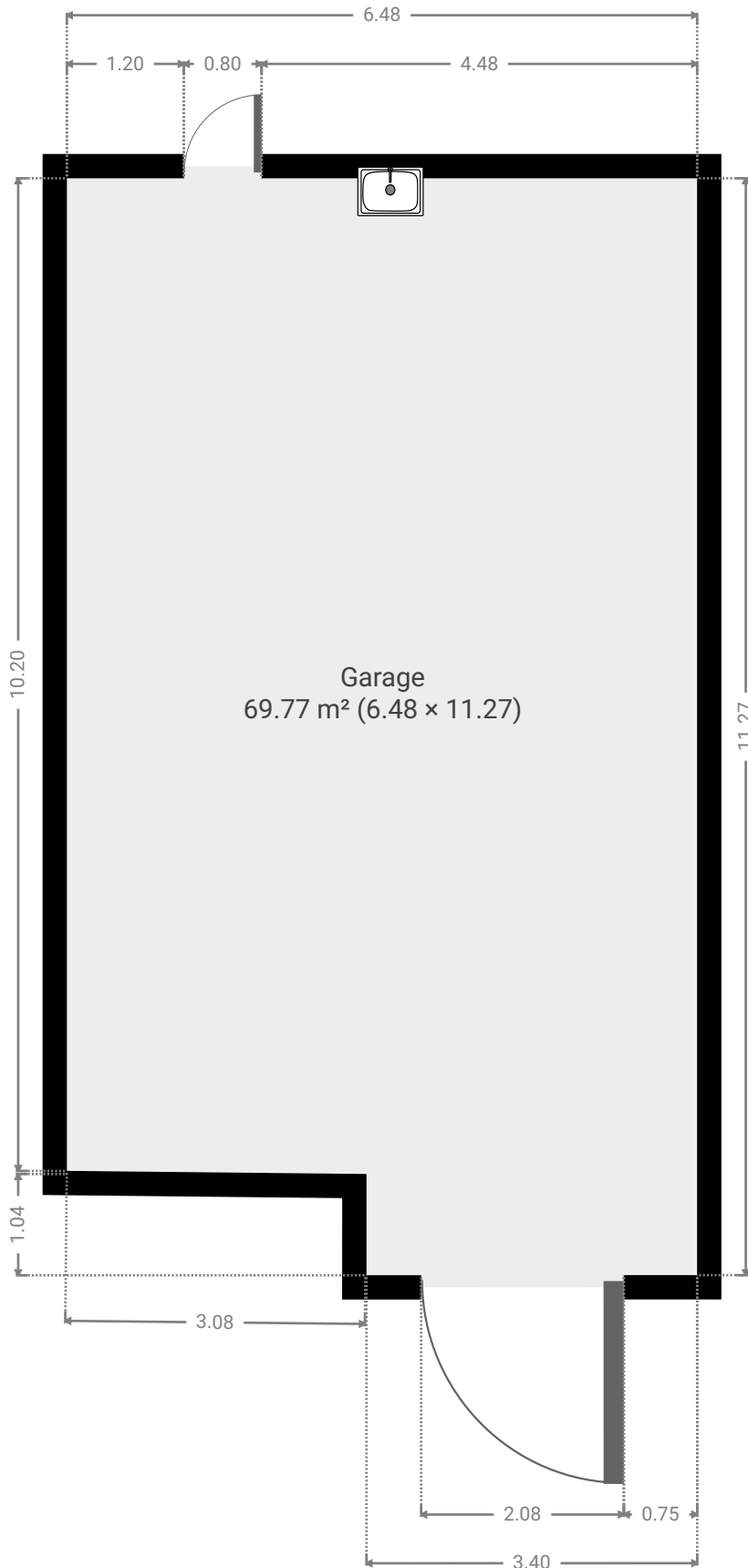
CREATED ON

2022-10-18

Floors

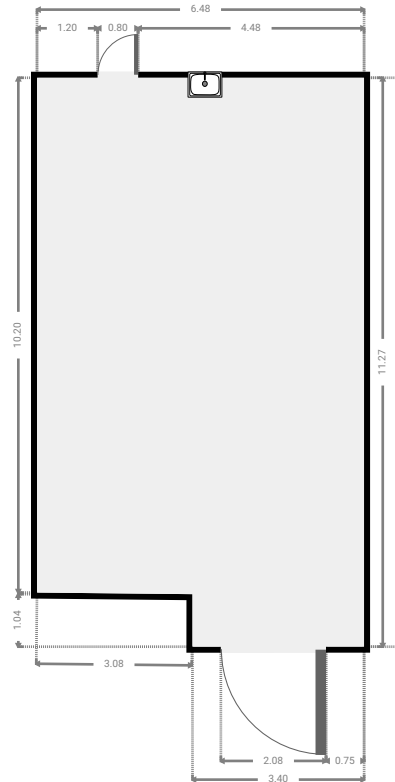
2

▼ Ground Floor

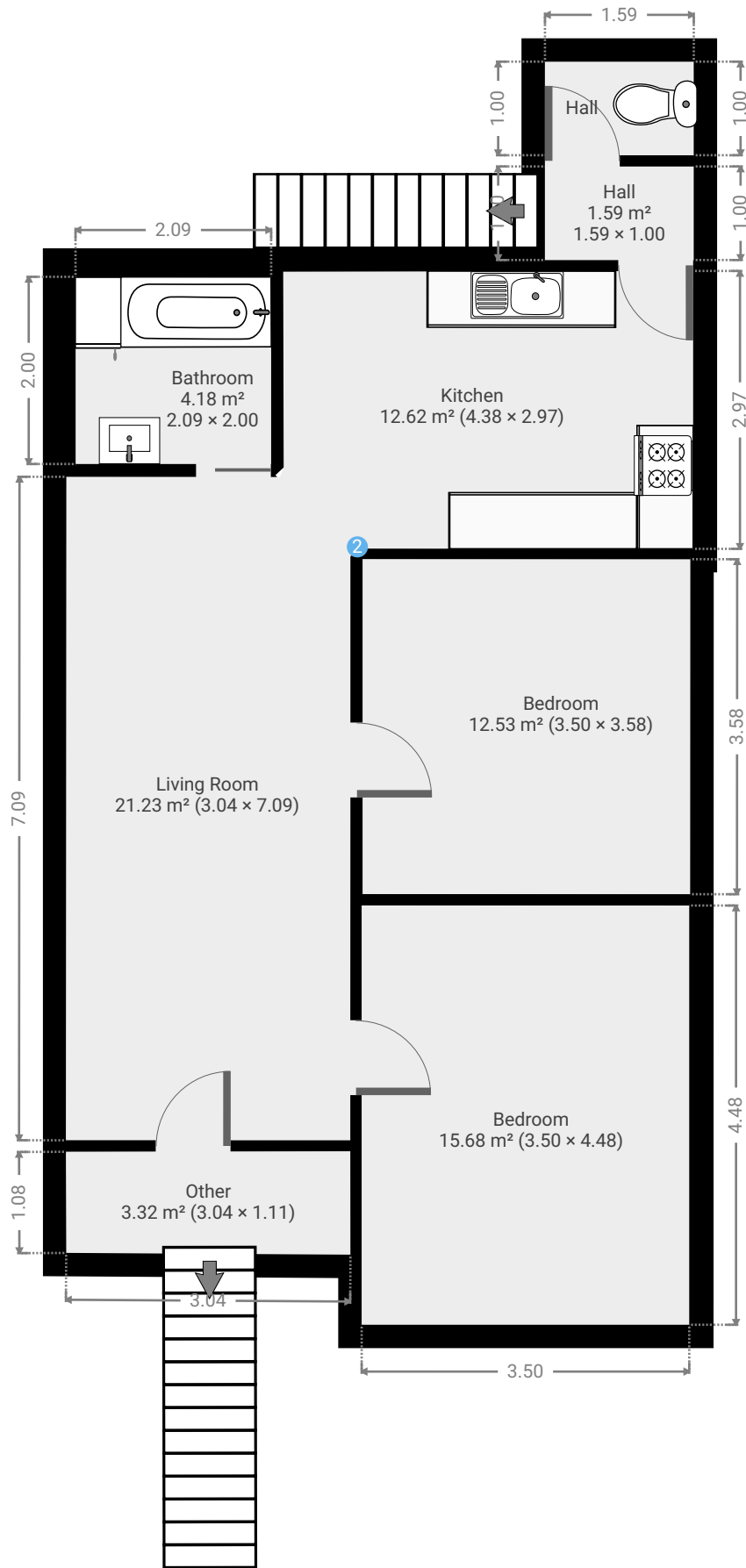


▼ **Garage**
Ground Floor

WIDTH: 6.48 m • LENGTH: 11.27 m
AREA: 69.77 m² • PERIMETER: 35.47 m

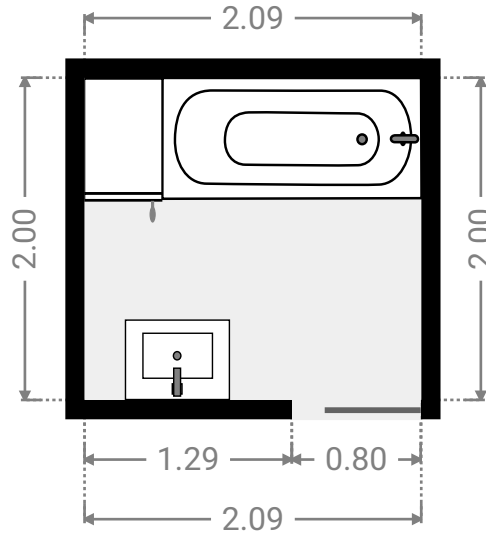
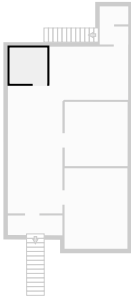


▼ 1st Floor



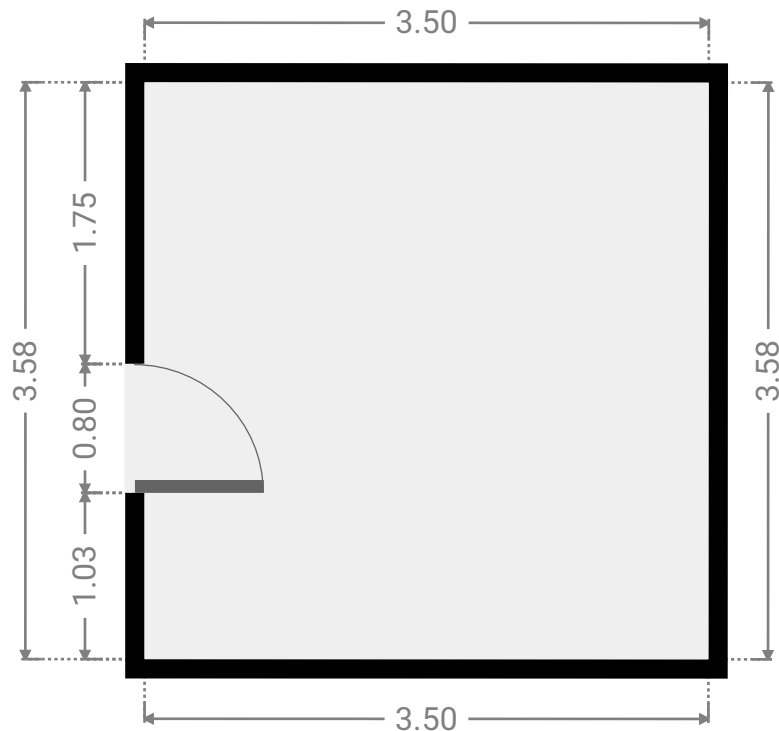
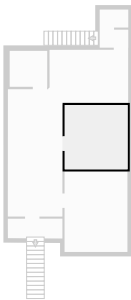
▼ **Bathroom**
1st Floor

WIDTH: 2.09 m • LENGTH: 2.00 m
AREA: 4.18 m² • PERIMETER: 8.18 m



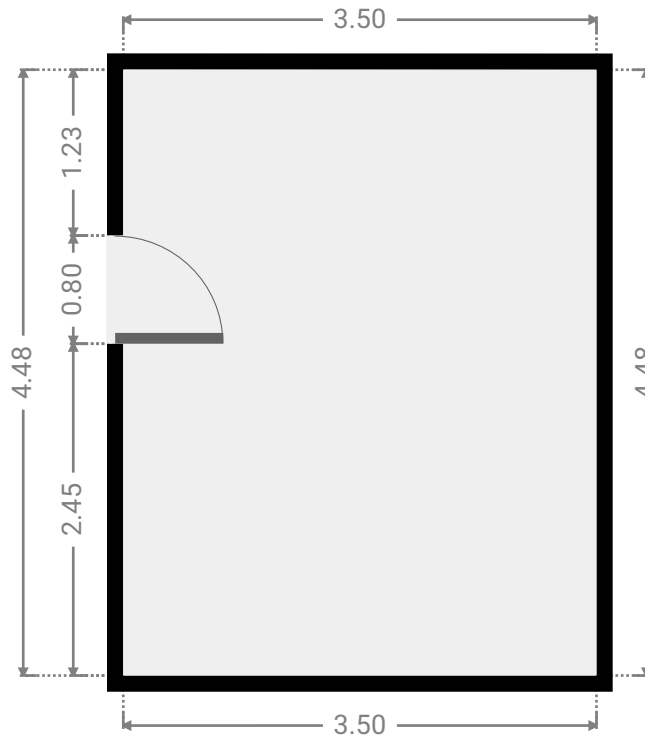
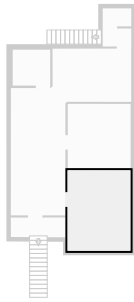
▼ **Bedroom**
1st Floor

WIDTH: 3.50 m • LENGTH: 3.58 m
AREA: 12.53 m² • PERIMETER: 14.16 m



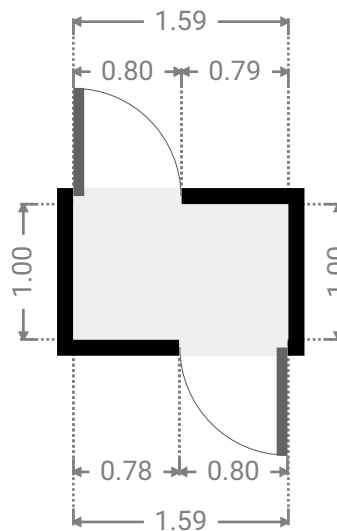
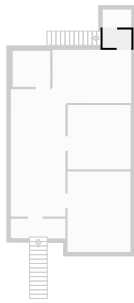
▼ **Bedroom**
1st Floor

WIDTH: 3.50 m • LENGTH: 4.48 m
AREA: 15.68 m² • PERIMETER: 15.96 m



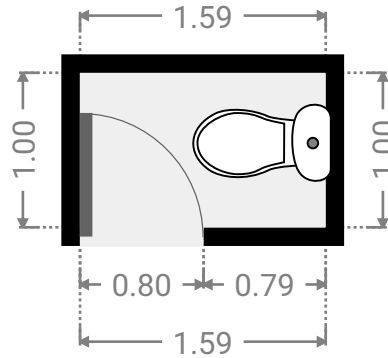
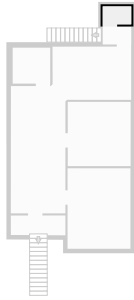
▼ **Hall**
1st Floor

WIDTH: 1.59 m • LENGTH: 1.00 m
AREA: 1.59 m² • PERIMETER: 5.18 m



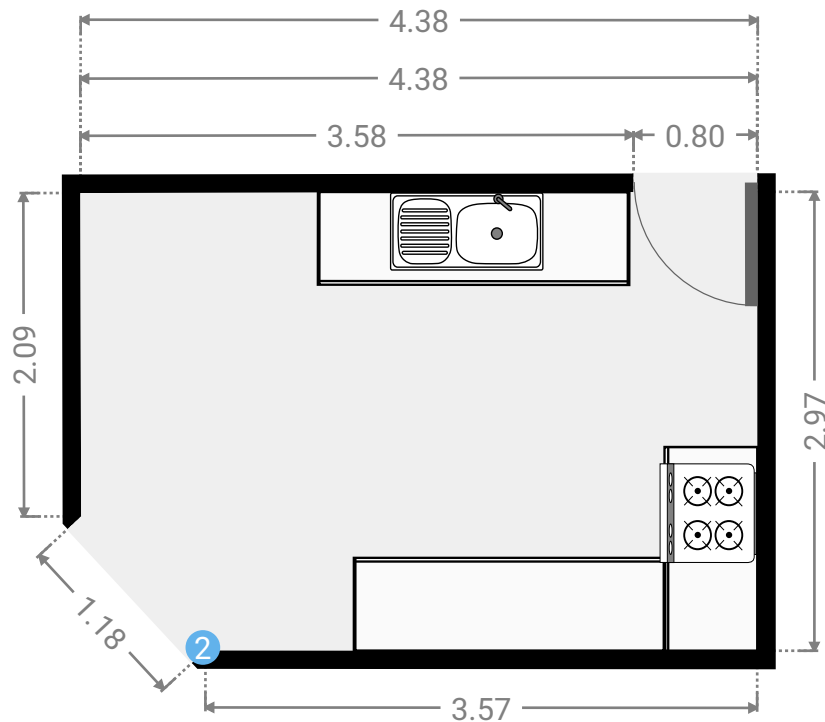
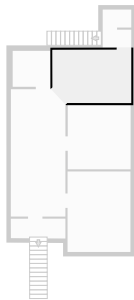
▼ **Hall**
1st Floor

WIDTH: 1.59 m • LENGTH: 1.00 m
AREA: 1.59 m² • PERIMETER: 5.18 m



▼ **Kitchen**
1st Floor

WIDTH: 4.38 m • LENGTH: 2.97 m
AREA: 12.62 m² • PERIMETER: 14.20 m



▼ **Kitchen/1st Floor**

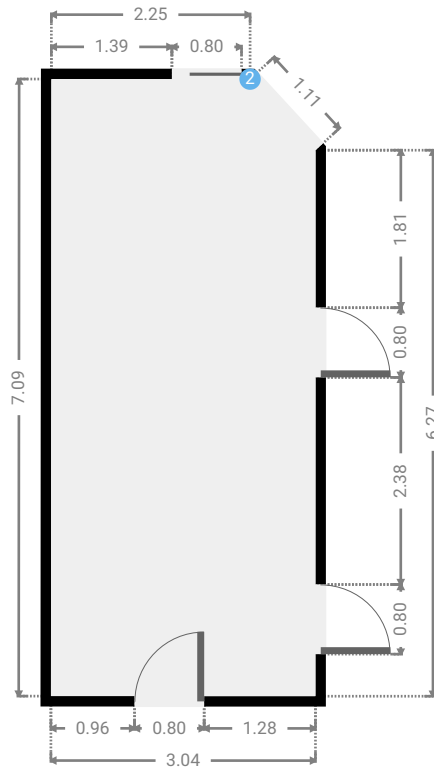
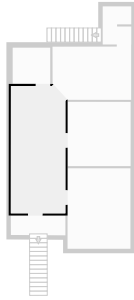
2 **OPENING**

Height
0.00 m



▼ **Living Room**
1st Floor

WIDTH: 3.04 m • LENGTH: 7.09 m
AREA: 21.23 m² • PERIMETER: 19.80 m



▼ **Other**
1st Floor

WIDTH: 3.04 m • LENGTH: 1.11 m
AREA: 3.32 m² • PERIMETER: 8.26 m

