

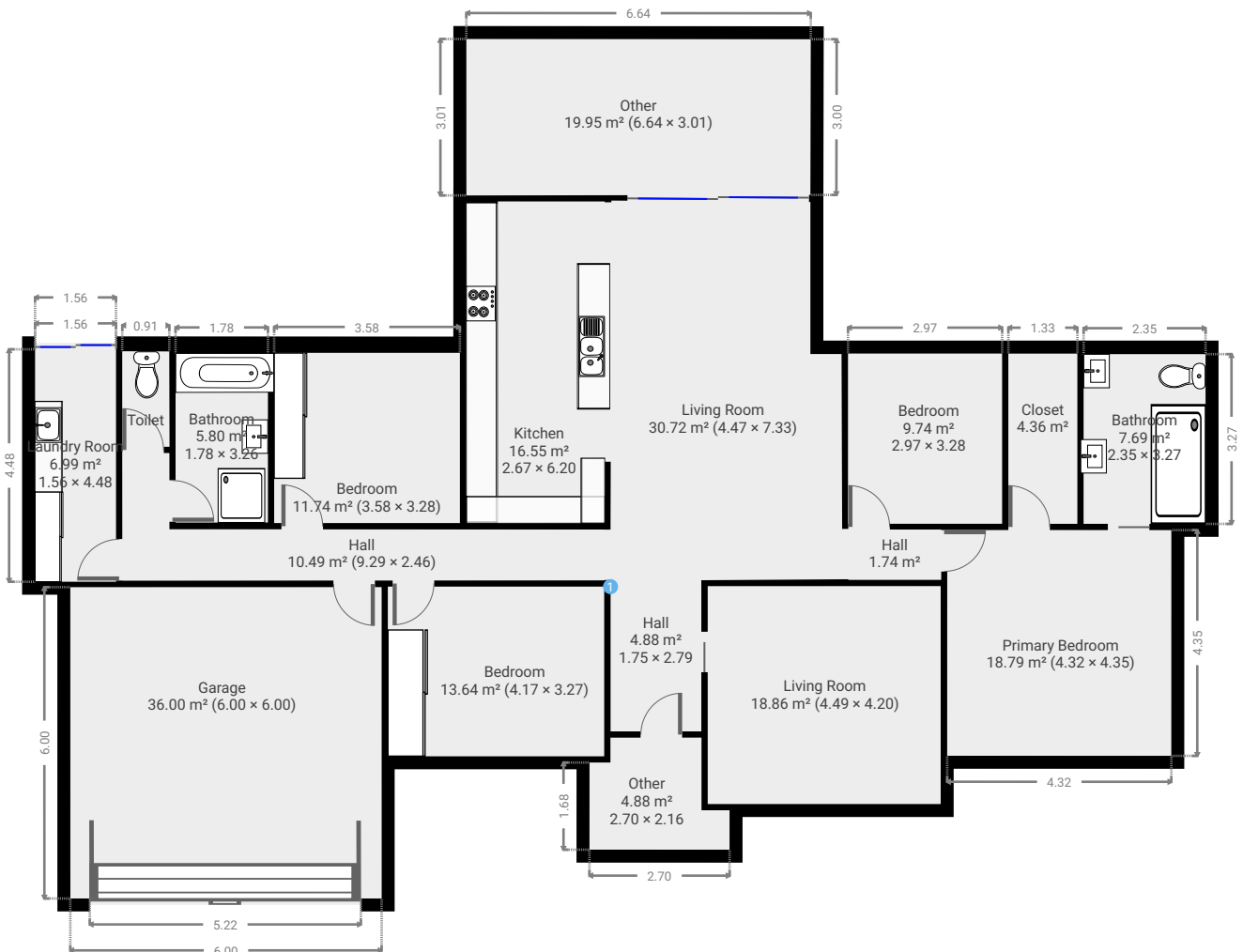
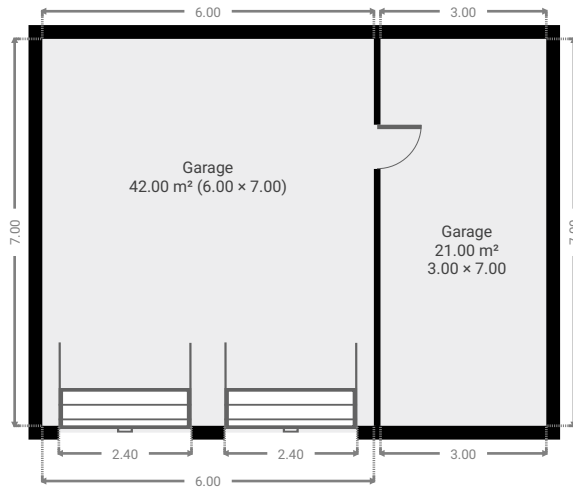
20 Tomtitt Avenue

SUBMITTED BY
Ray White Rockhampton Casey
stockers@cqoz.com

CREATED ON
2022-08-22

Floors 1

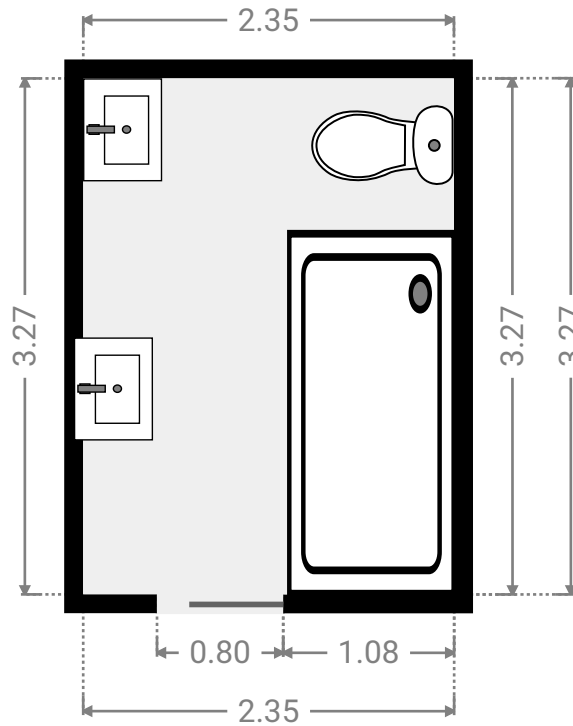
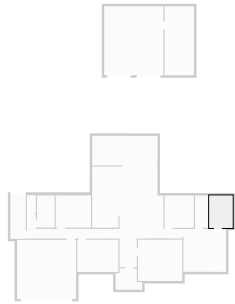
▼ Ground Floor



FLOORS: 1

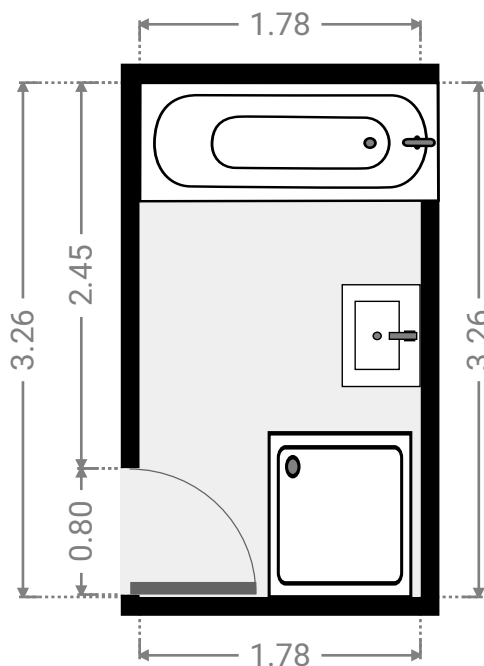
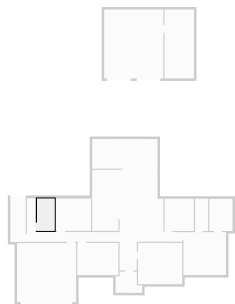
▼ **Bathroom**
Ground Floor

WIDTH: 2.35 m • LENGTH: 3.27 m
AREA: 7.69 m² • PERIMETER: 11.24 m



▼ **Bathroom**
Ground Floor

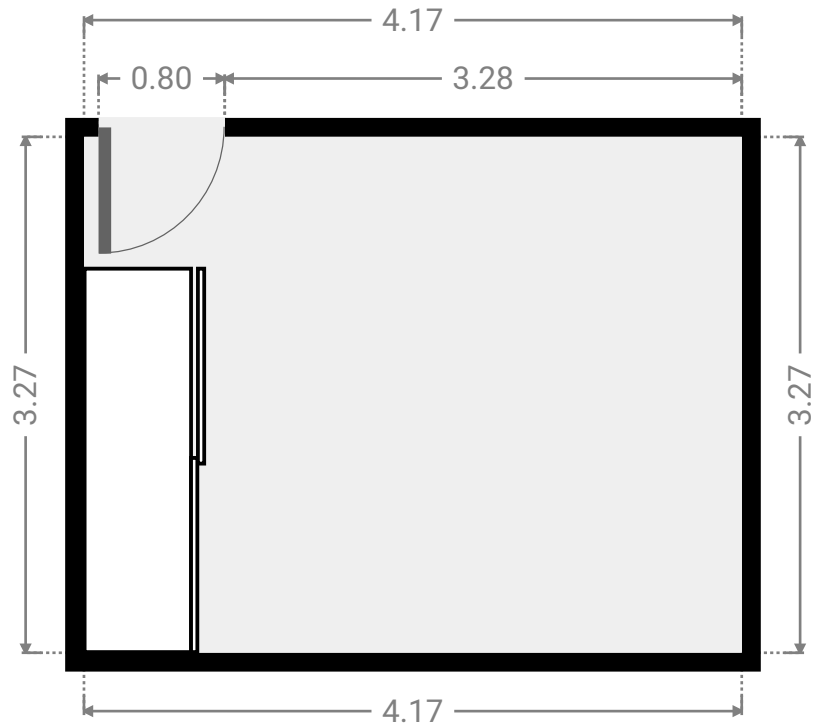
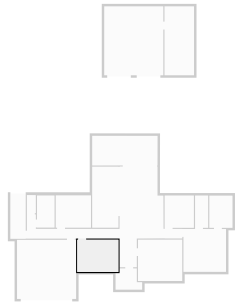
WIDTH: 1.78 m • LENGTH: 3.26 m
AREA: 5.80 m² • PERIMETER: 10.08 m



FLOORS: 1

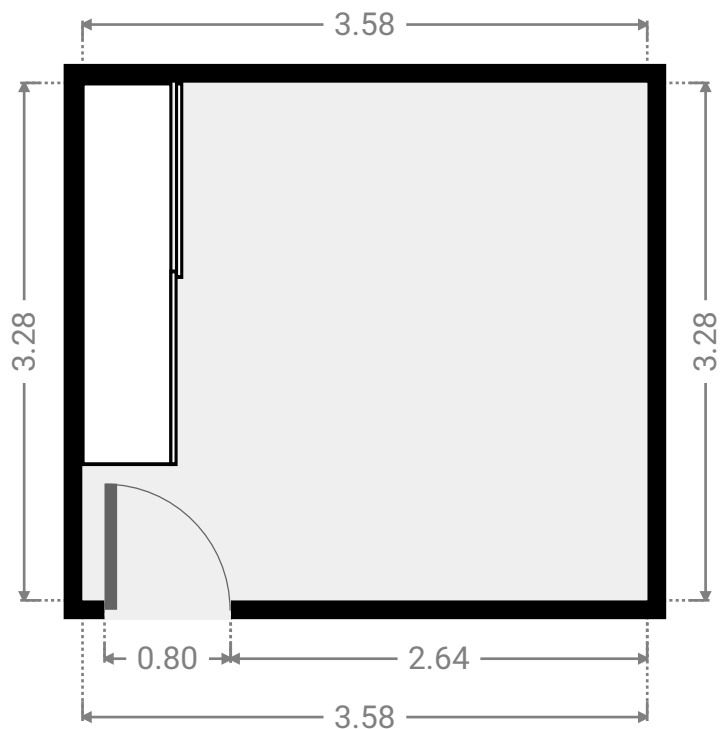
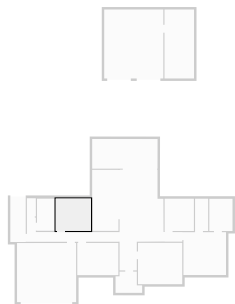
▼ **Bedroom**
Ground Floor

WIDTH: 4.17 m • LENGTH: 3.27 m
AREA: 13.64 m² • PERIMETER: 14.88 m



▼ **Bedroom**
Ground Floor

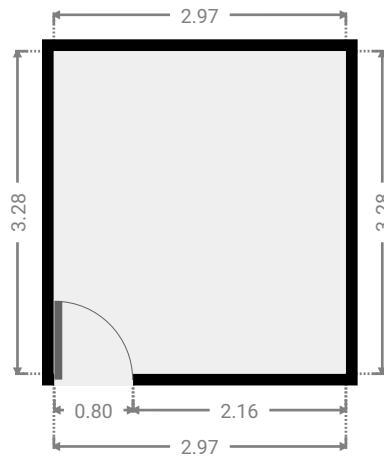
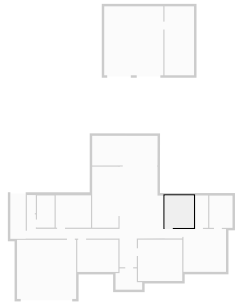
WIDTH: 3.58 m • LENGTH: 3.28 m
AREA: 11.74 m² • PERIMETER: 13.72 m



FLOORS: 1

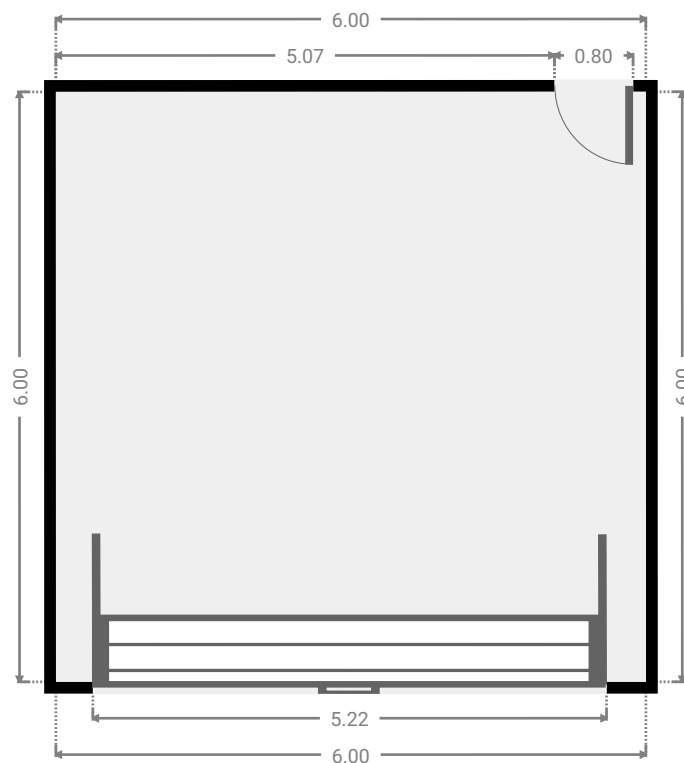
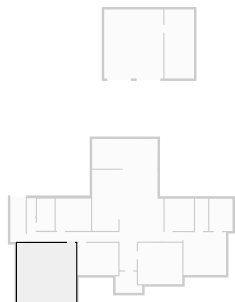
▼ **Bedroom**
Ground Floor

WIDTH: 2.97 m • LENGTH: 3.28 m
AREA: 9.74 m² • PERIMETER: 12.50 m



▼ **Garage**
Ground Floor

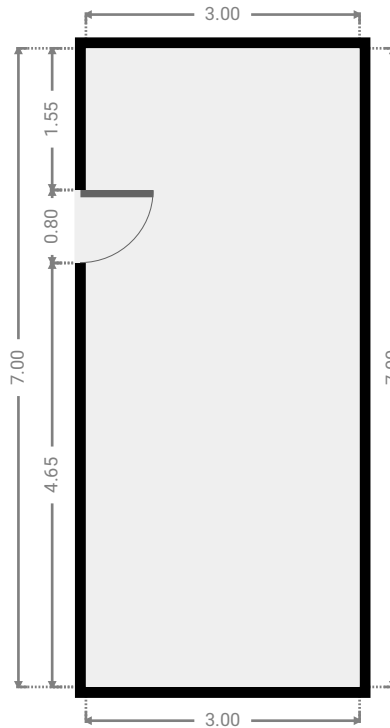
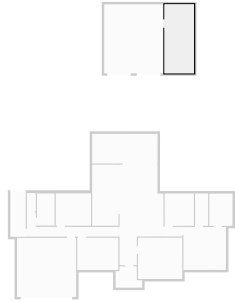
WIDTH: 6.00 m • LENGTH: 6.00 m
AREA: 36.00 m² • PERIMETER: 24.00 m



FLOORS: 1

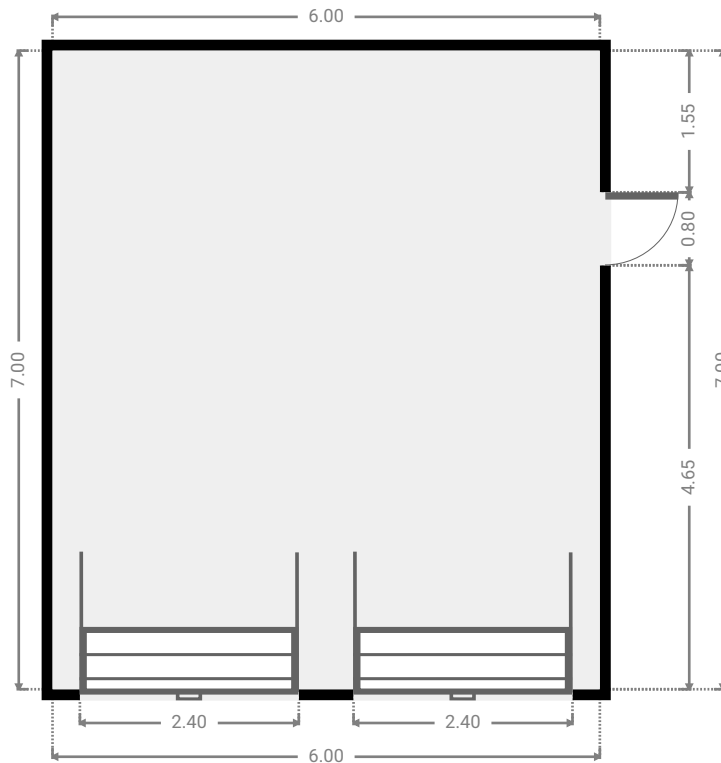
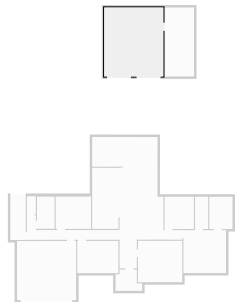
▼ **Garage**
Ground Floor

WIDTH: 3.00 m • LENGTH: 7.00 m
AREA: 21.00 m² • PERIMETER: 20.00 m



▼ **Garage**
Ground Floor

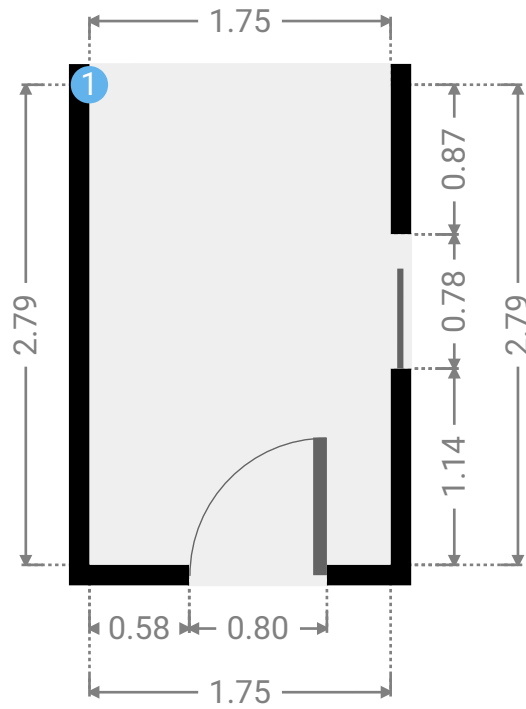
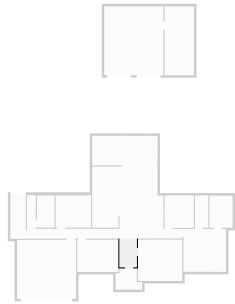
WIDTH: 6.00 m • LENGTH: 7.00 m
AREA: 42.00 m² • PERIMETER: 26.00 m



FLOORS: 1

▼ **Hall**
Ground Floor

WIDTH: 1.75 m • LENGTH: 2.79 m
AREA: 4.88 m² • PERIMETER: 9.08 m



▼ **Hall/Ground Floor**

1 OPENING

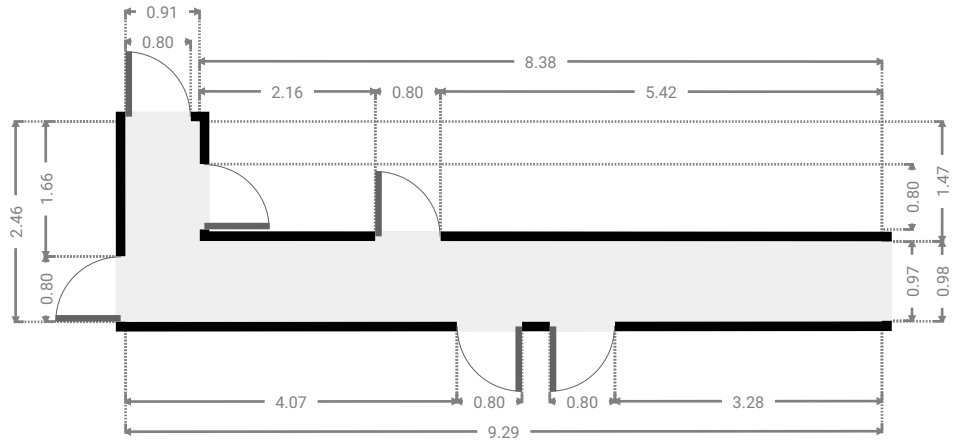
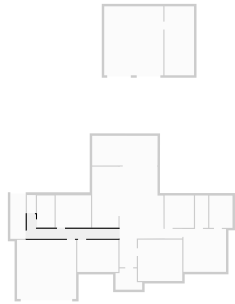
Height
0.00 m



FLOORS: 1

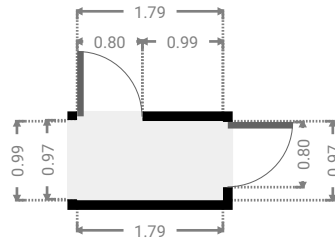
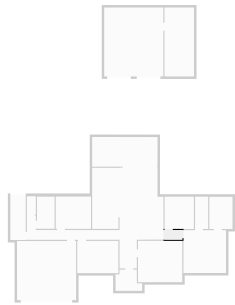
▼ Hall
Ground Floor

WIDTH: 9.29 m • LENGTH: 2.46 m
AREA: 10.49 m² • PERIMETER: 23.49 m



▼ Hall
Ground Floor

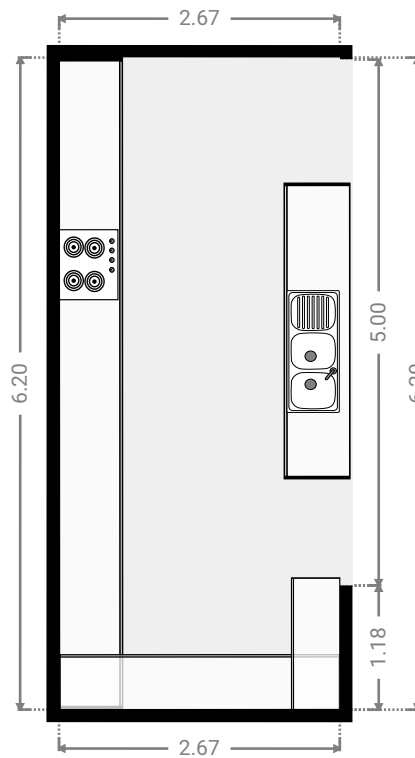
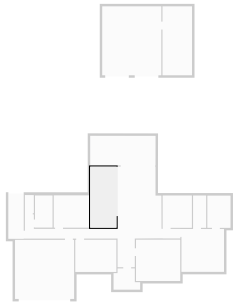
WIDTH: 1.79 m • LENGTH: 0.97 m
AREA: 1.74 m² • PERIMETER: 5.52 m



FLOORS: 1

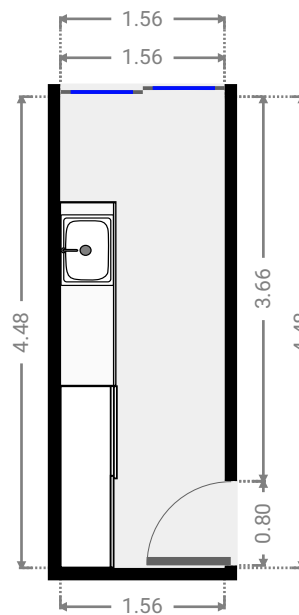
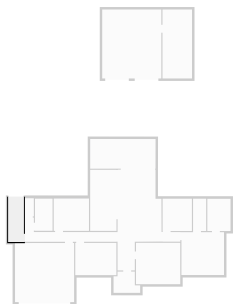
▼ **Kitchen**
Ground Floor

WIDTH: 2.67 m • LENGTH: 6.20 m
AREA: 16.55 m² • PERIMETER: 17.74 m



▼ **Laundry Room**
Ground Floor

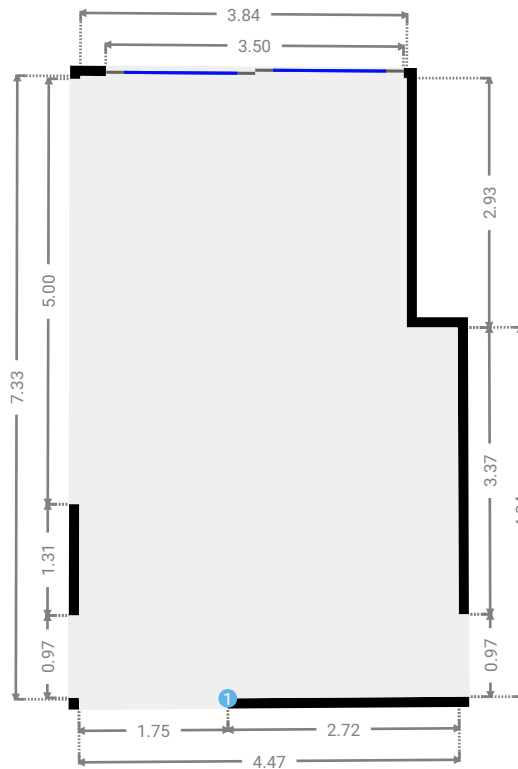
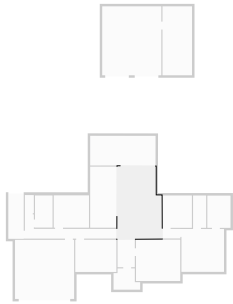
WIDTH: 1.56 m • LENGTH: 4.48 m
AREA: 6.99 m² • PERIMETER: 12.08 m



FLOORS: 1

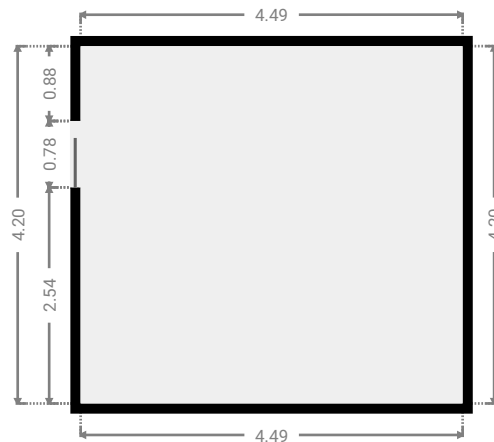
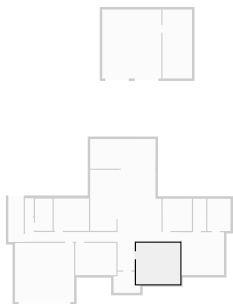
▼ **Living Room**
Ground Floor

WIDTH: 4.47 m • LENGTH: 7.33 m
AREA: 30.72 m² • PERIMETER: 23.51 m



▼ **Living Room**
Ground Floor

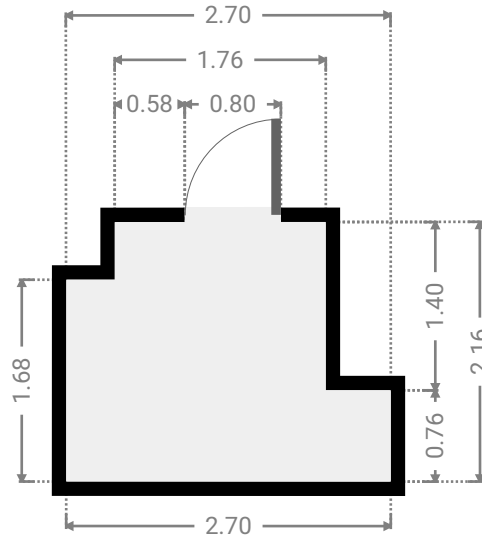
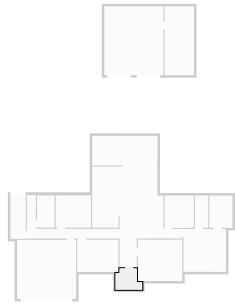
WIDTH: 4.49 m • LENGTH: 4.20 m
AREA: 18.86 m² • PERIMETER: 17.38 m



FLOORS: 1

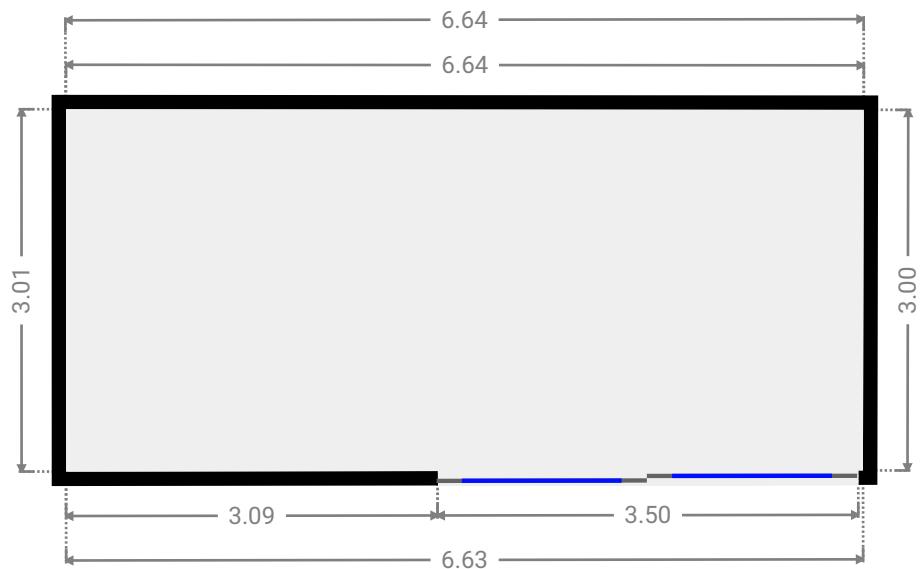
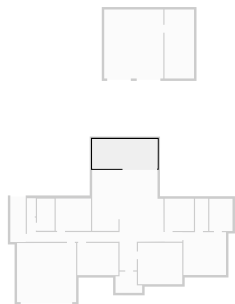
▼ **Other**
Ground Floor

WIDTH: 2.70 m • LENGTH: 2.16 m
AREA: 4.88 m² • PERIMETER: 9.72 m



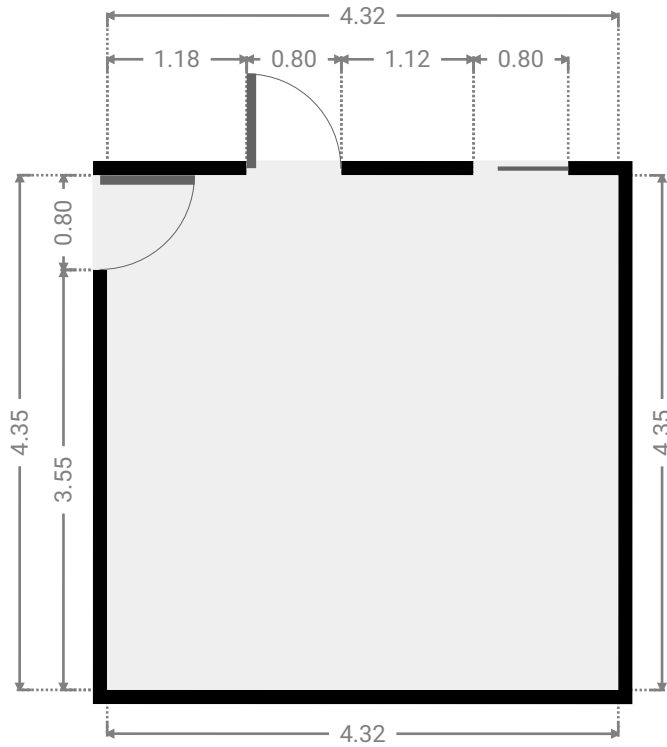
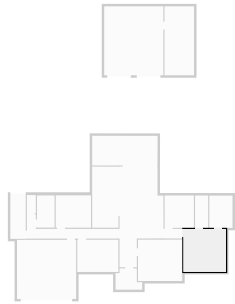
▼ **Other**
Ground Floor

WIDTH: 6.64 m • LENGTH: 3.01 m
AREA: 19.95 m² • PERIMETER: 19.28 m



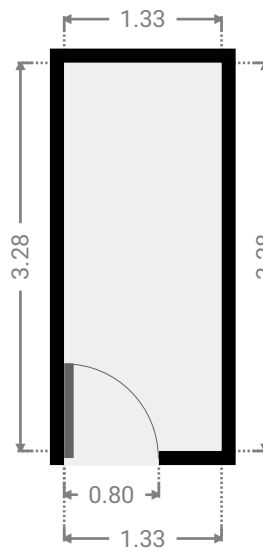
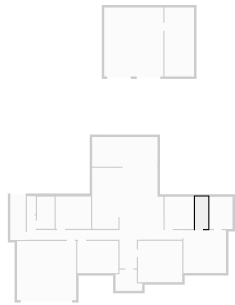
▼ **Primary Bedroom**
Ground Floor

WIDTH: 4.32 m • LENGTH: 4.35 m
AREA: 18.79 m² • PERIMETER: 17.34 m



▼ **Closet**
Ground Floor

WIDTH: 1.33 m • LENGTH: 3.28 m
AREA: 4.36 m² • PERIMETER: 9.22 m



▼ Toilet
Ground Floor

WIDTH: 0.91 m • LENGTH: 1.84 m
AREA: 1.67 m² • PERIMETER: 5.50 m

