

20 Belmont Road

SUBMITTED BY
Ray White Rockhampton Casey
stockers@cqoz.com

CREATED ON
2022-10-19

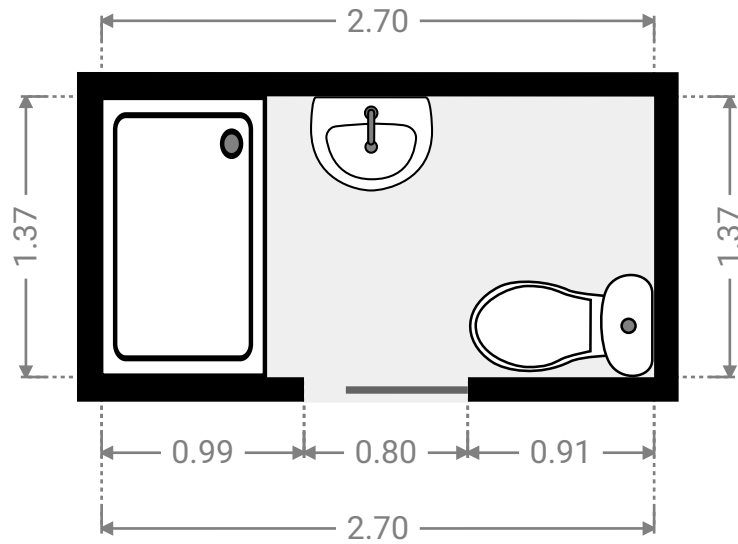
Floors
1

▼ Ground Floor



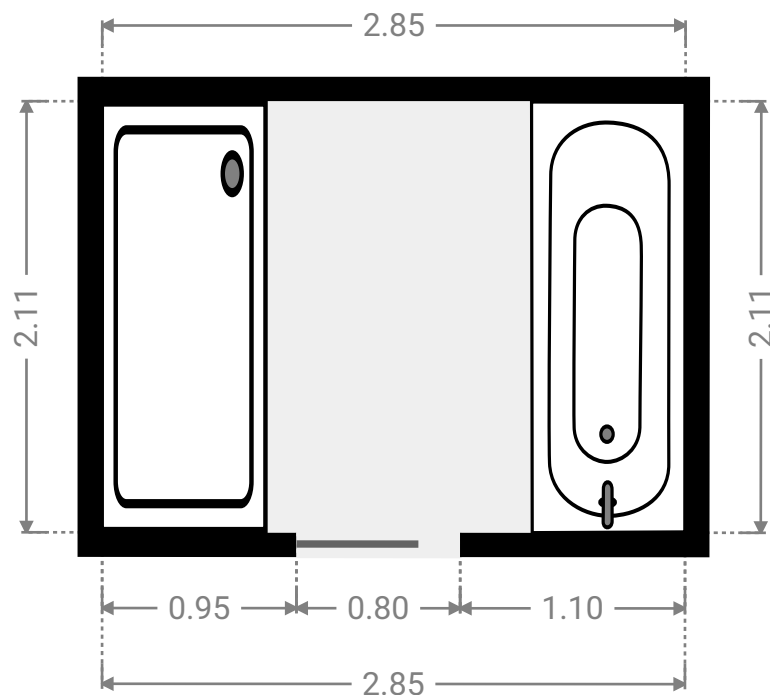
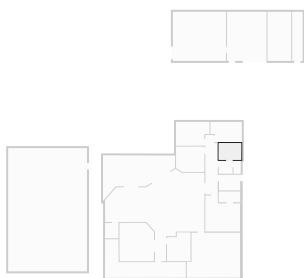
▼ **Bathroom**
Ground Floor

WIDTH: 2.70 m • LENGTH: 1.37 m
AREA: 3.70 m² • PERIMETER: 8.14 m



▼ **Bathroom**
Ground Floor

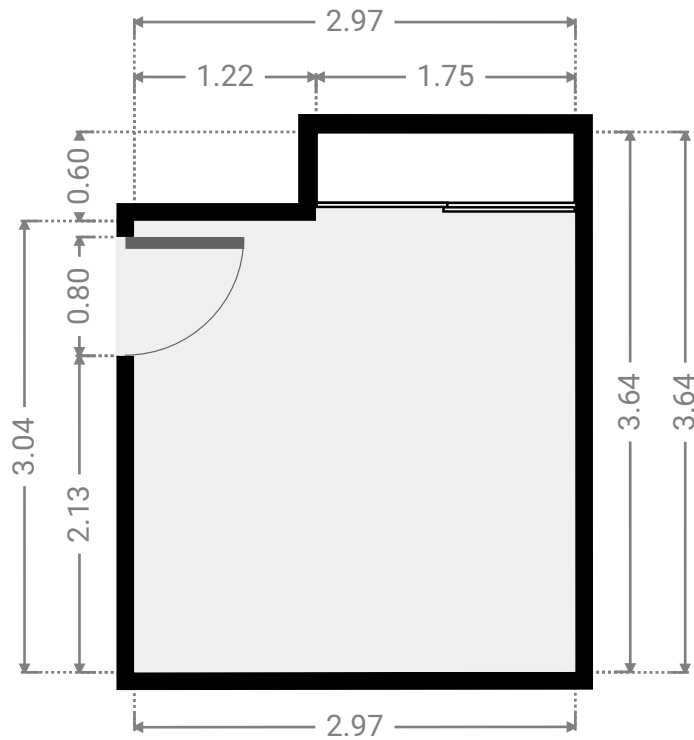
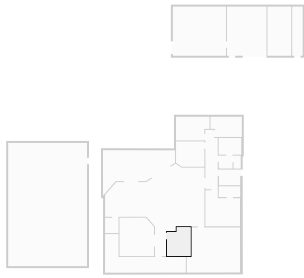
WIDTH: 2.85 m • LENGTH: 2.11 m
AREA: 6.01 m² • PERIMETER: 9.91 m



FLOORS: 1

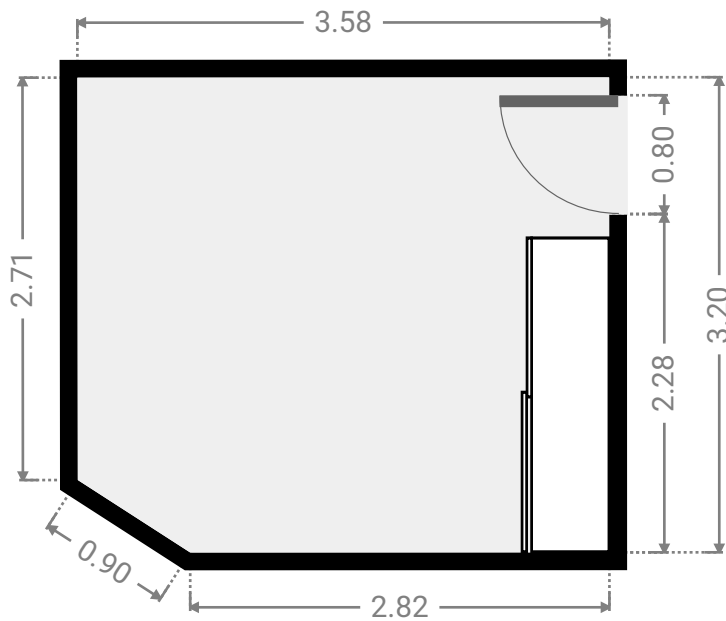
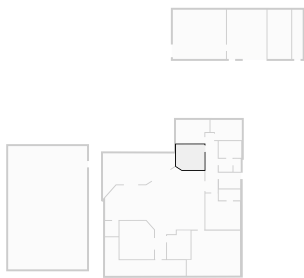
▼ **Bedroom**
Ground Floor

WIDTH: 2.97 m • LENGTH: 3.64 m
AREA: 10.07 m² • PERIMETER: 13.22 m



▼ **Bedroom**
Ground Floor

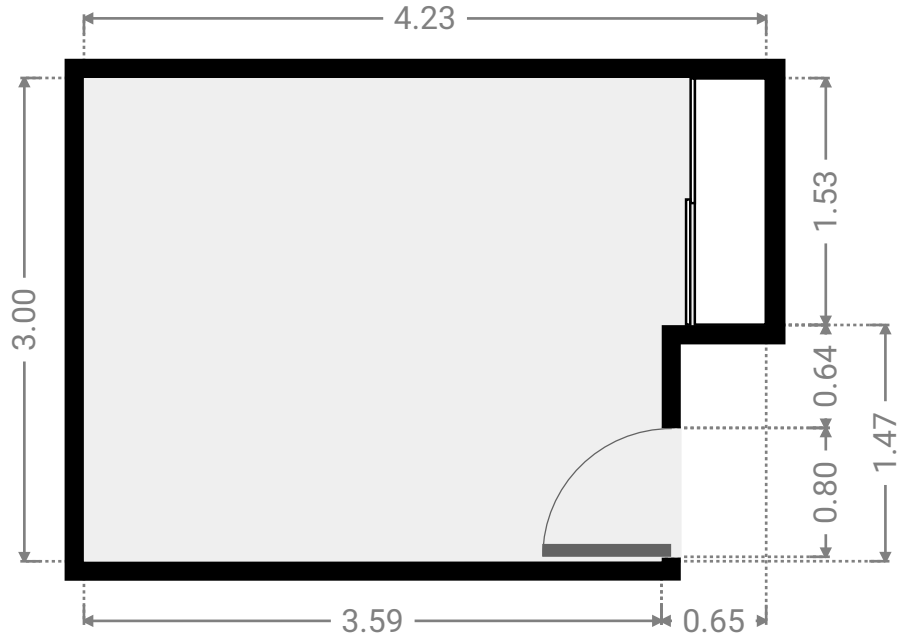
WIDTH: 3.58 m • LENGTH: 3.20 m
AREA: 11.27 m² • PERIMETER: 13.22 m



FLOORS: 1

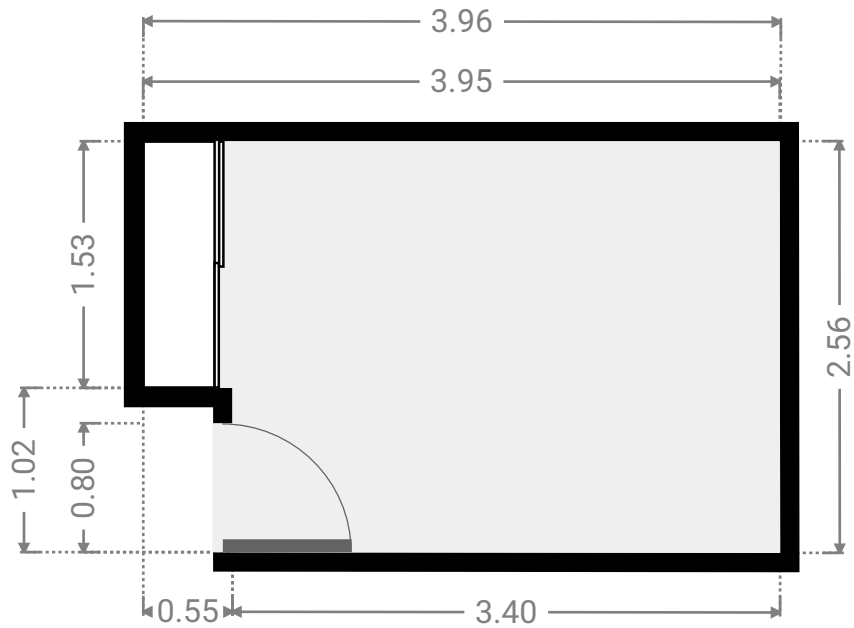
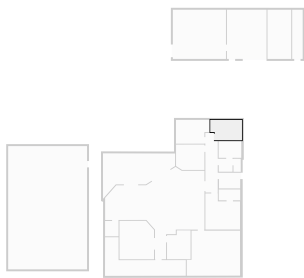
▼ **Bedroom**
Ground Floor

WIDTH: 4.23 m • LENGTH: 3.00 m
AREA: 11.75 m² • PERIMETER: 14.47 m



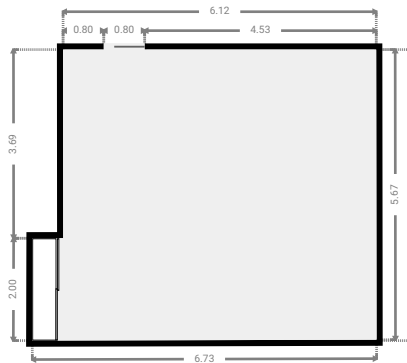
▼ **Bedroom**
Ground Floor

WIDTH: 3.96 m • LENGTH: 2.56 m
AREA: 9.53 m² • PERIMETER: 13.01 m



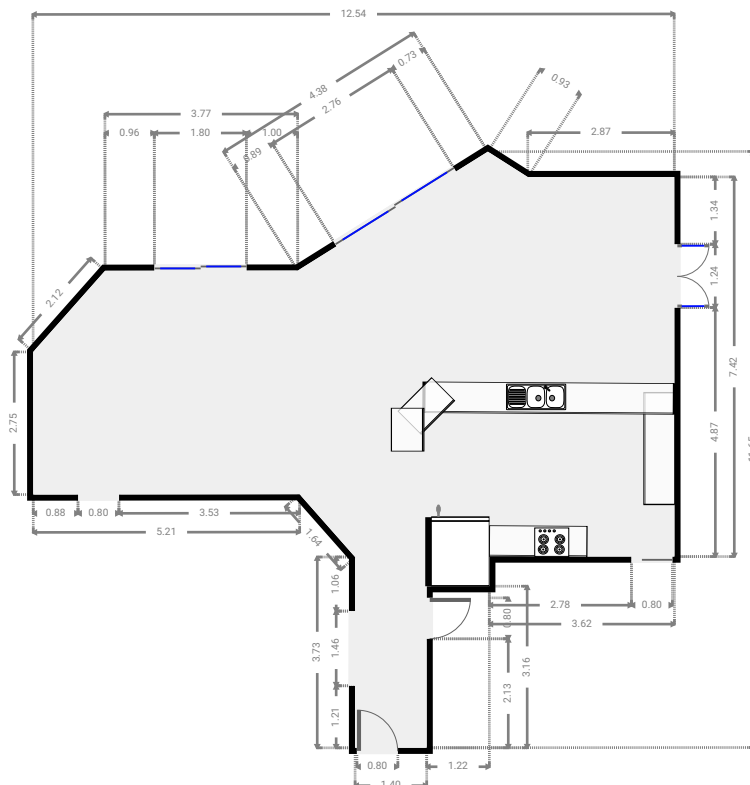
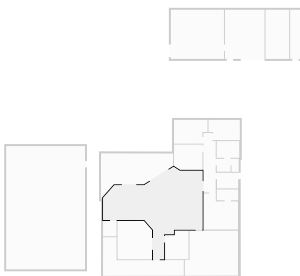
▼ **Garage**
Ground Floor

WIDTH: 6.73 m • LENGTH: 5.69 m
AREA: 35.97 m² • PERIMETER: 24.81 m



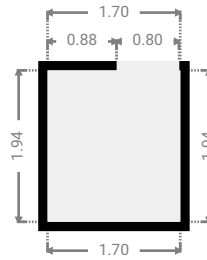
▼ **Hall**
Ground Floor

WIDTH: 12.54 m • LENGTH: 11.65 m
AREA: 79.06 m² • PERIMETER: 44.82 m



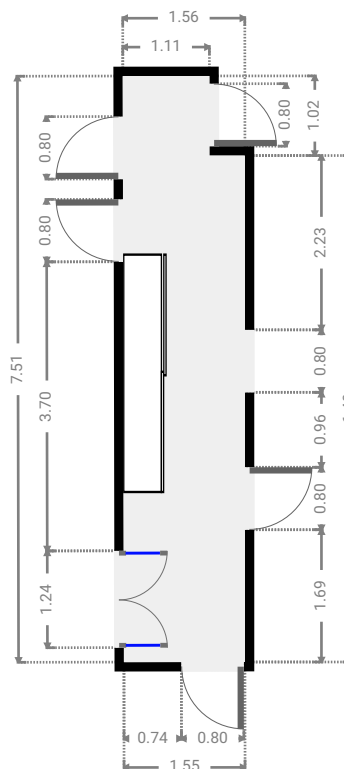
▼ **Closet**
Ground Floor

WIDTH: 1.70 m • LENGTH: 1.94 m
AREA: 3.30 m² • PERIMETER: 7.28 m



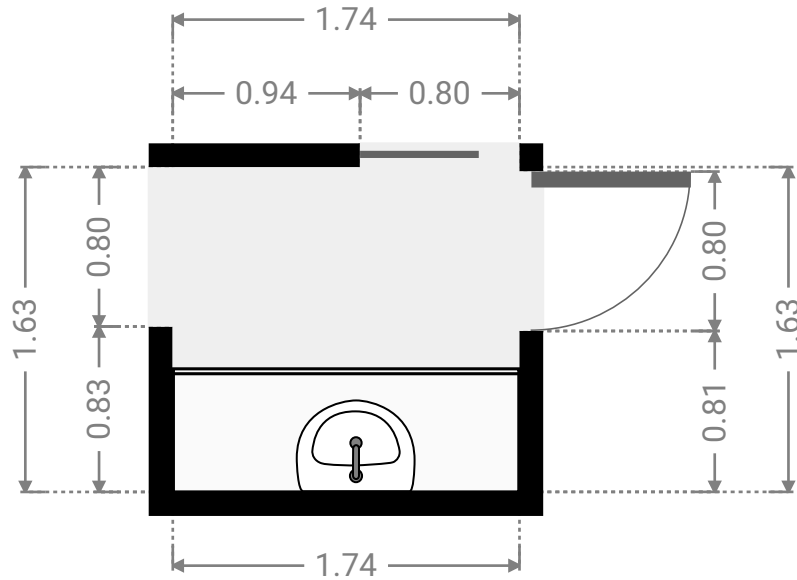
▼ **Hall**
Ground Floor

WIDTH: 1.56 m • LENGTH: 7.51 m
AREA: 11.23 m² • PERIMETER: 18.13 m



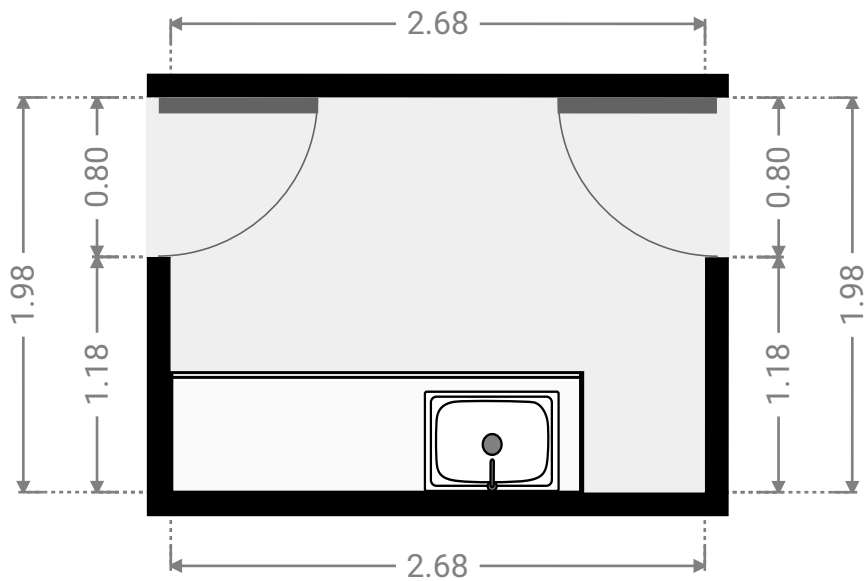
▼ **Hall**
Ground Floor

WIDTH: 1.74 m • LENGTH: 1.63 m
AREA: 2.84 m² • PERIMETER: 6.74 m



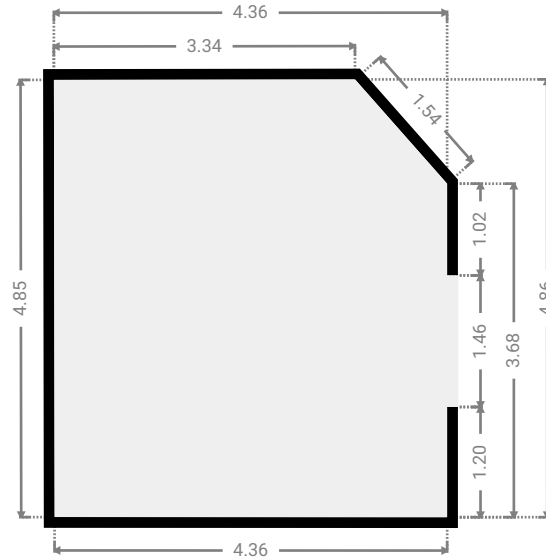
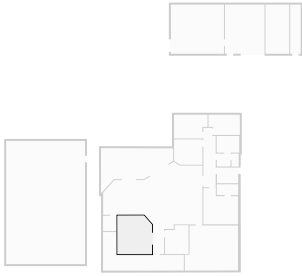
▼ **Laundry Room**
Ground Floor

WIDTH: 2.68 m • LENGTH: 1.98 m
AREA: 5.31 m² • PERIMETER: 9.32 m



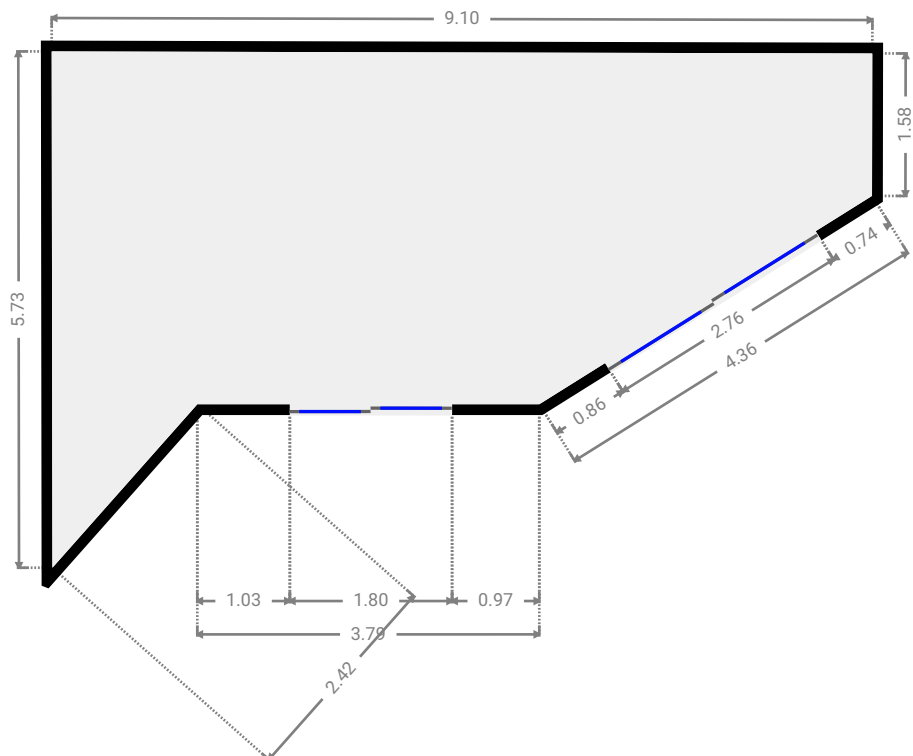
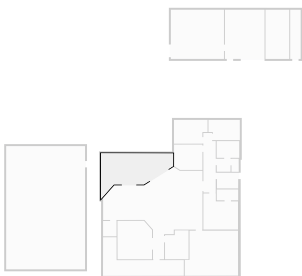
▼ Living Room
Ground Floor

WIDTH: 4.36 m • LENGTH: 4.86 m
AREA: 20.57 m² • PERIMETER: 17.79 m



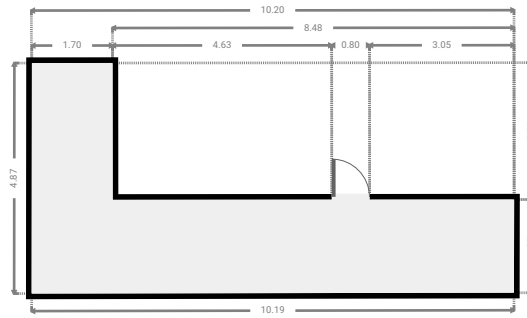
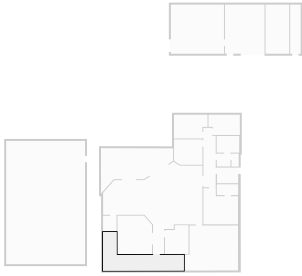
▼ Other
Ground Floor

WIDTH: 9.10 m • LENGTH: 5.73 m
AREA: 32.71 m² • PERIMETER: 26.99 m



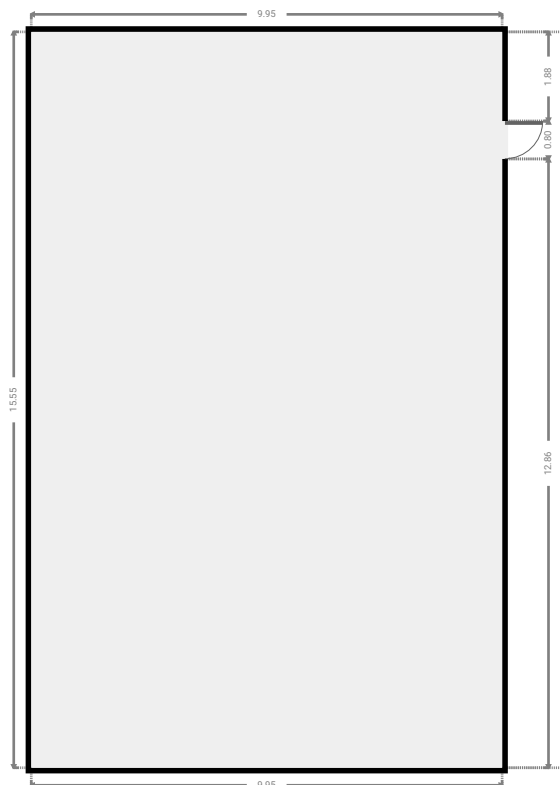
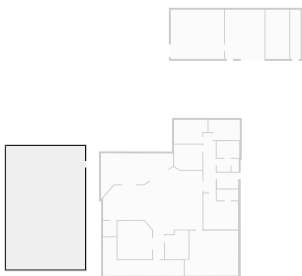
▼ Other
Ground Floor

WIDTH: 10.20 m • LENGTH: 4.87 m
AREA: 25.06 m² • PERIMETER: 30.11 m



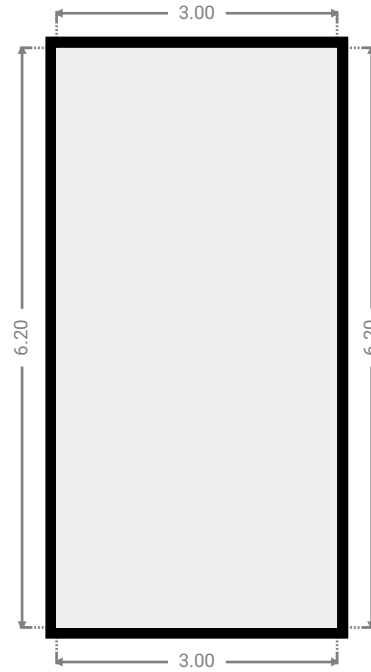
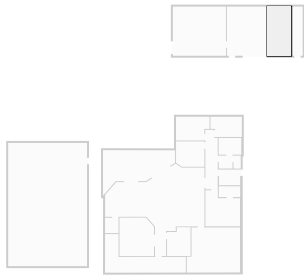
▼ Other
Ground Floor

WIDTH: 9.95 m • LENGTH: 15.55 m
AREA: 154.71 m² • PERIMETER: 51.00 m



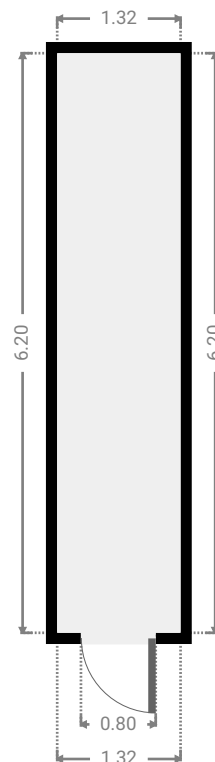
▼ **Other**
Ground Floor

WIDTH: 3.00 m • LENGTH: 6.20 m
AREA: 18.60 m² • PERIMETER: 18.40 m



▼ **Other**
Ground Floor

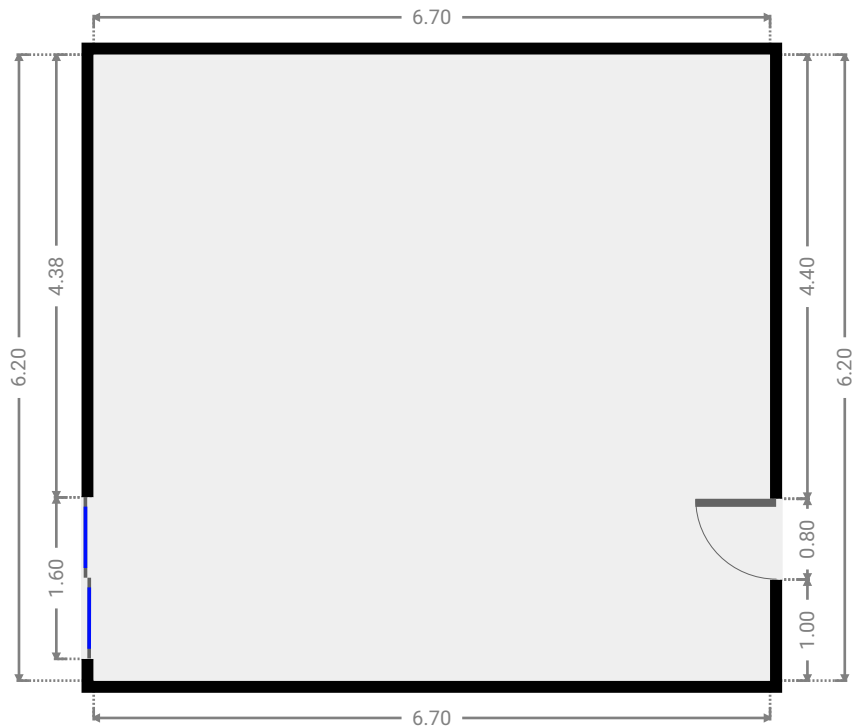
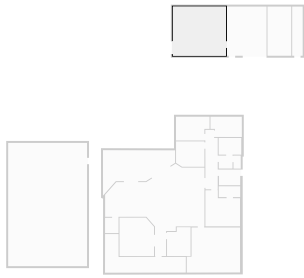
WIDTH: 1.32 m • LENGTH: 6.20 m
AREA: 8.18 m² • PERIMETER: 15.04 m



FLOORS: 1

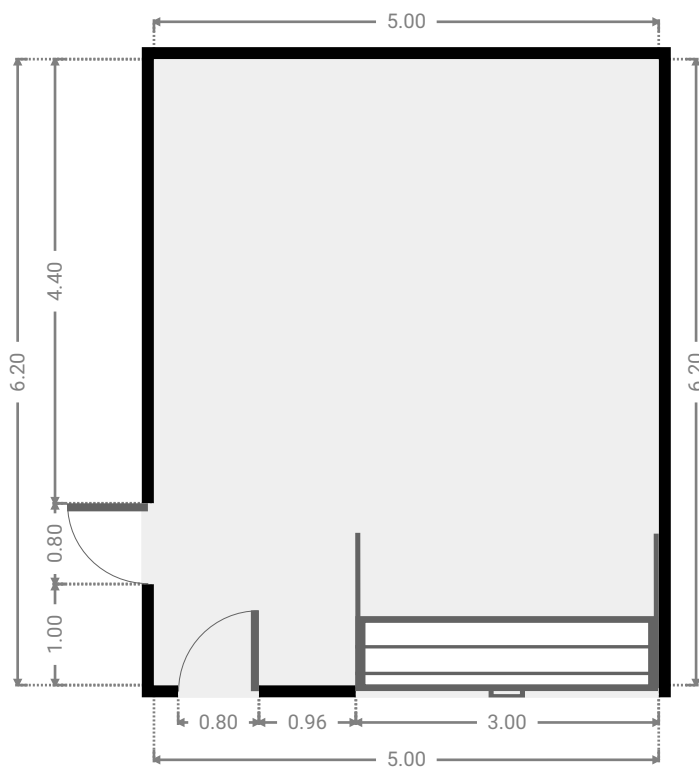
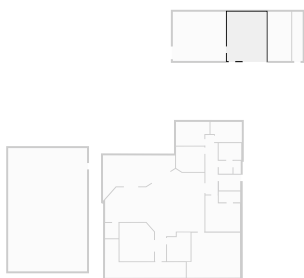
▼ **Other**
Ground Floor

WIDTH: 6.70 m • LENGTH: 6.20 m
AREA: 41.54 m² • PERIMETER: 25.80 m



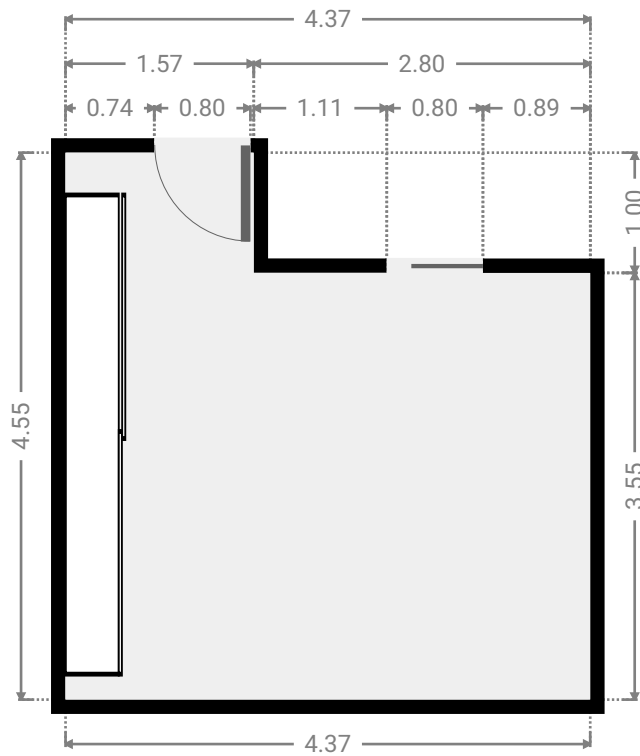
▼ **Other**
Ground Floor

WIDTH: 5.00 m • LENGTH: 6.20 m
AREA: 31.00 m² • PERIMETER: 22.40 m



▼ **Primary Bedroom**
Ground Floor

WIDTH: 4.37 m • LENGTH: 4.55 m
AREA: 17.07 m² • PERIMETER: 17.83 m



▼ **Toilet**
Ground Floor

WIDTH: 0.92 m • LENGTH: 1.64 m
AREA: 1.50 m² • PERIMETER: 5.11 m

