

2 Soligo Court

Ground Floor



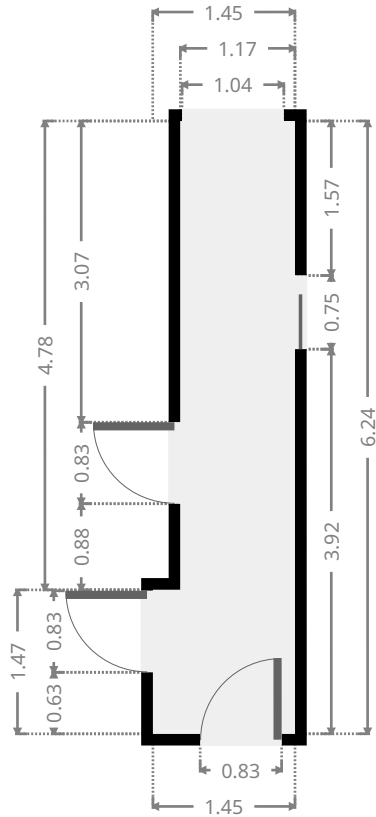
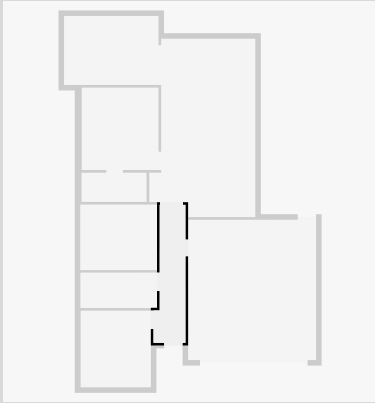
THIS FLOORPLAN IS PROVIDED WITHOUT WARRANTY OF ANY KIND. SENSOPIA DISCLAIMS ANY WARRANTY INCLUDING, WITHOUT LIMITATION, SATISFACTORY QUALITY OR ACCURACY OF DIMENSIONS.



2 Soligo Court

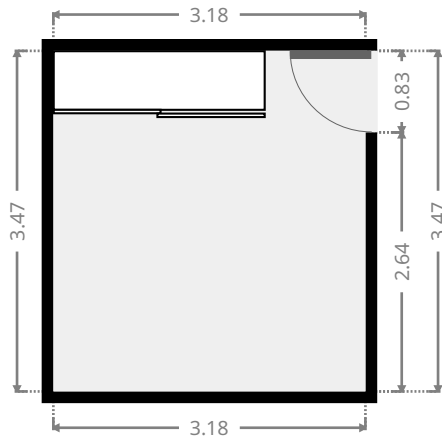
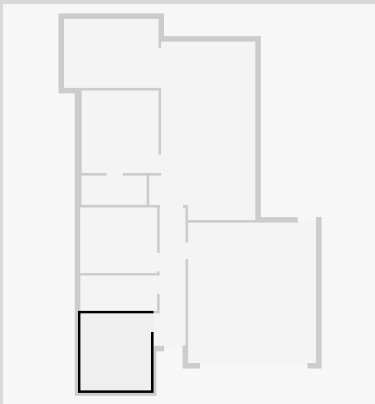
Hall

Width: 1.45 m
 Length: 6.24 m
 Area: 7.70 m²
 Perimeter: 15.38 m



Bedroom

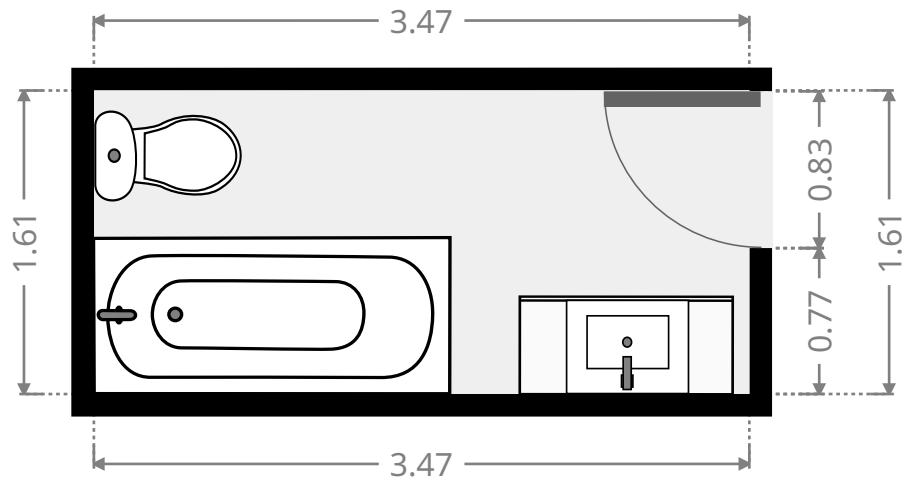
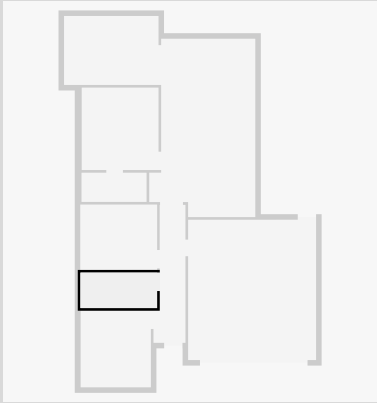
Width: 3.18 m
 Length: 3.47 m
 Area: 11.03 m²
 Perimeter: 13.30 m



2 Soligo Court

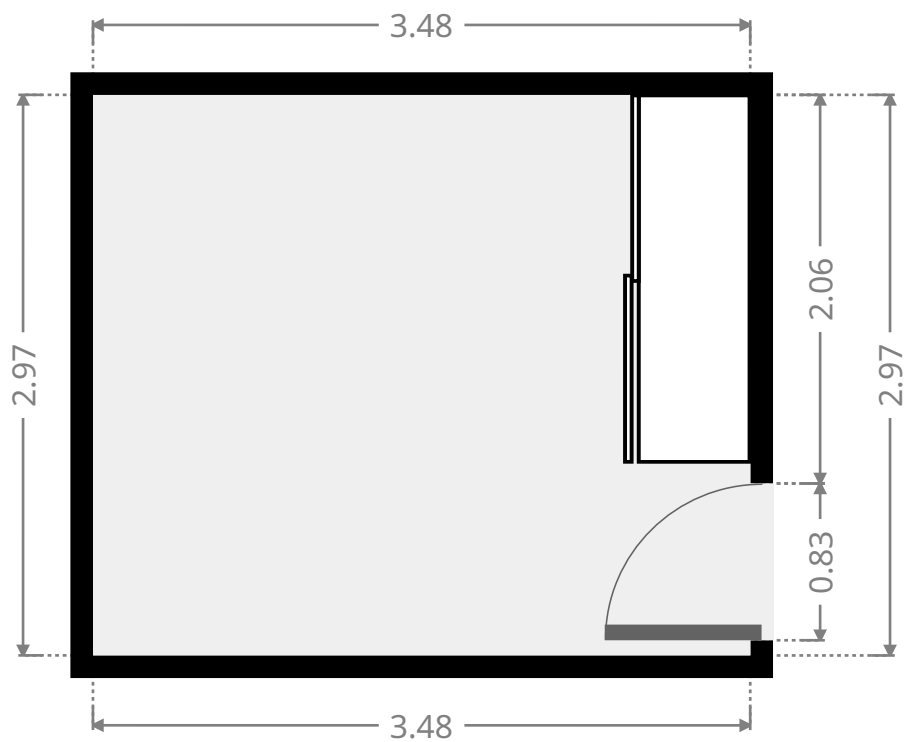
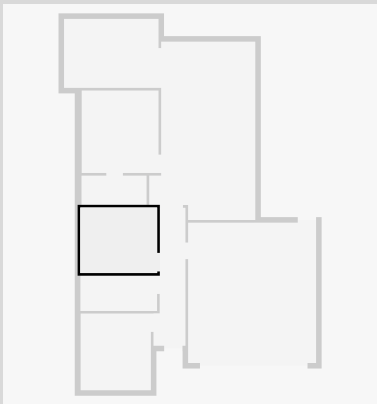
Bathroom

Width: 1.61 m
Length: 3.47 m
Area: 5.57 m²
Perimeter: 10.15 m

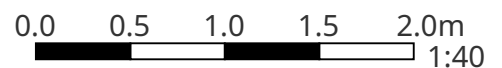


Bedroom

Width: 2.97 m
Length: 3.48 m
Area: 10.32 m²
Perimeter: 12.89 m



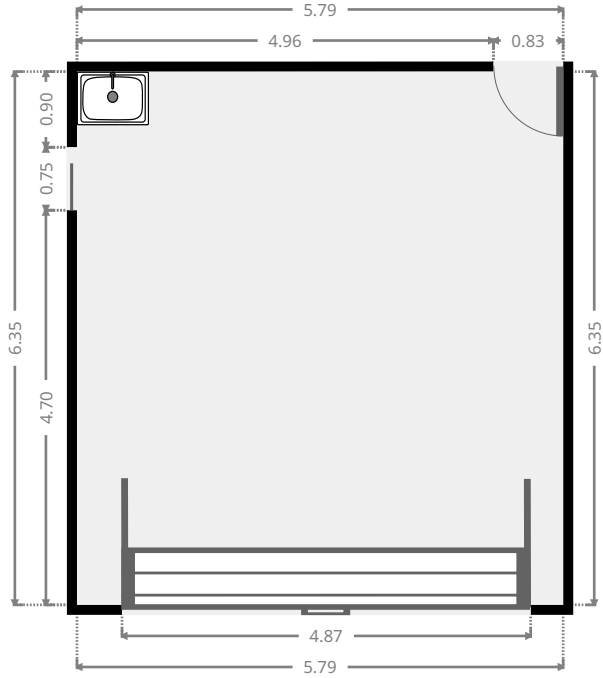
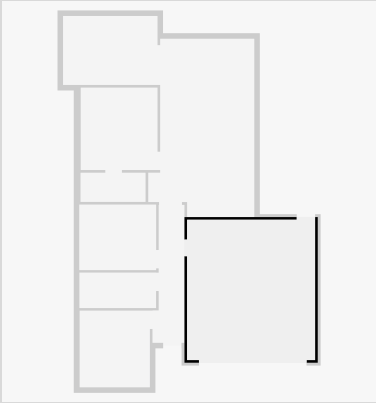
THIS FLOORPLAN IS PROVIDED WITHOUT WARRANTY OF ANY KIND. SENSOPIA DISCLAIMS ANY WARRANTY INCLUDING, WITHOUT LIMITATION, SATISFACTORY QUALITY OR ACCURACY OF DIMENSIONS.



2 Soligo Court

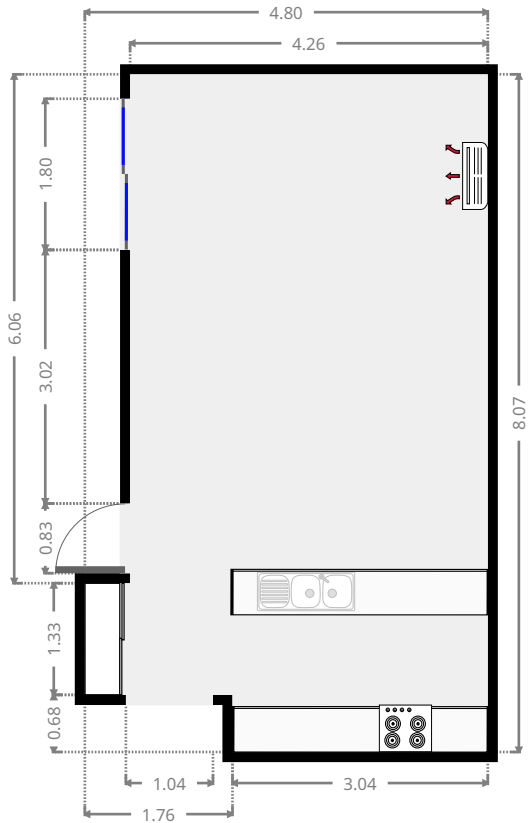
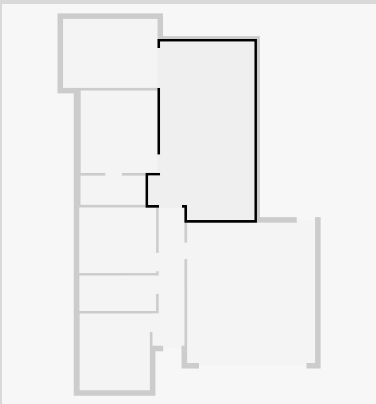
Garage

Width: 5.79 m
 Length: 6.35 m
 Area: 36.77 m²
 Perimeter: 24.28 m



Kitchen/Living/Dining

Width: 4.80 m
 Length: 8.07 m
 Area: 34.27 m²
 Perimeter: 25.74 m

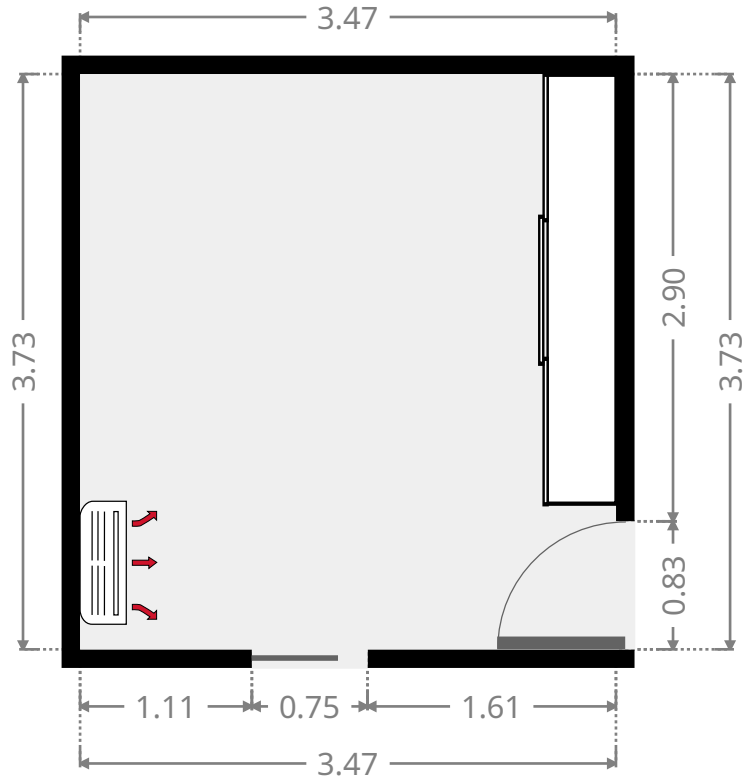
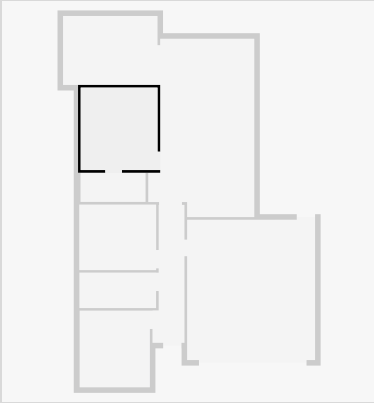


THIS FLOORPLAN IS PROVIDED WITHOUT WARRANTY OF ANY KIND. SENSOPIA DISCLAIMS ANY WARRANTY INCLUDING, WITHOUT LIMITATION, SATISFACTORY QUALITY OR ACCURACY OF DIMENSIONS.

2 Soligo Court

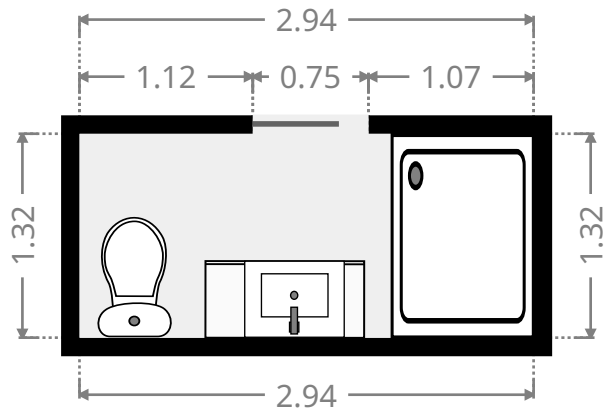
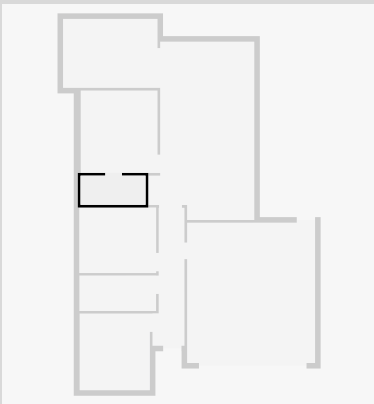
Master Bedroom

Width: 3.47 m
Length: 3.73 m
Area: 12.96 m²
Perimeter: 14.41 m



Bathroom

Width: 1.32 m
Length: 2.94 m
Area: 3.89 m²
Perimeter: 8.53 m



2 Soligo Court

Outdoor Area

Width: 3.12 m
Length: 4.27 m
Area: 13.34 m²
Perimeter: 14.79 m

