

2 Jewell Court

SUBMITTED BY

Ray White Rockhampton Casey
stockers@cqoz.com

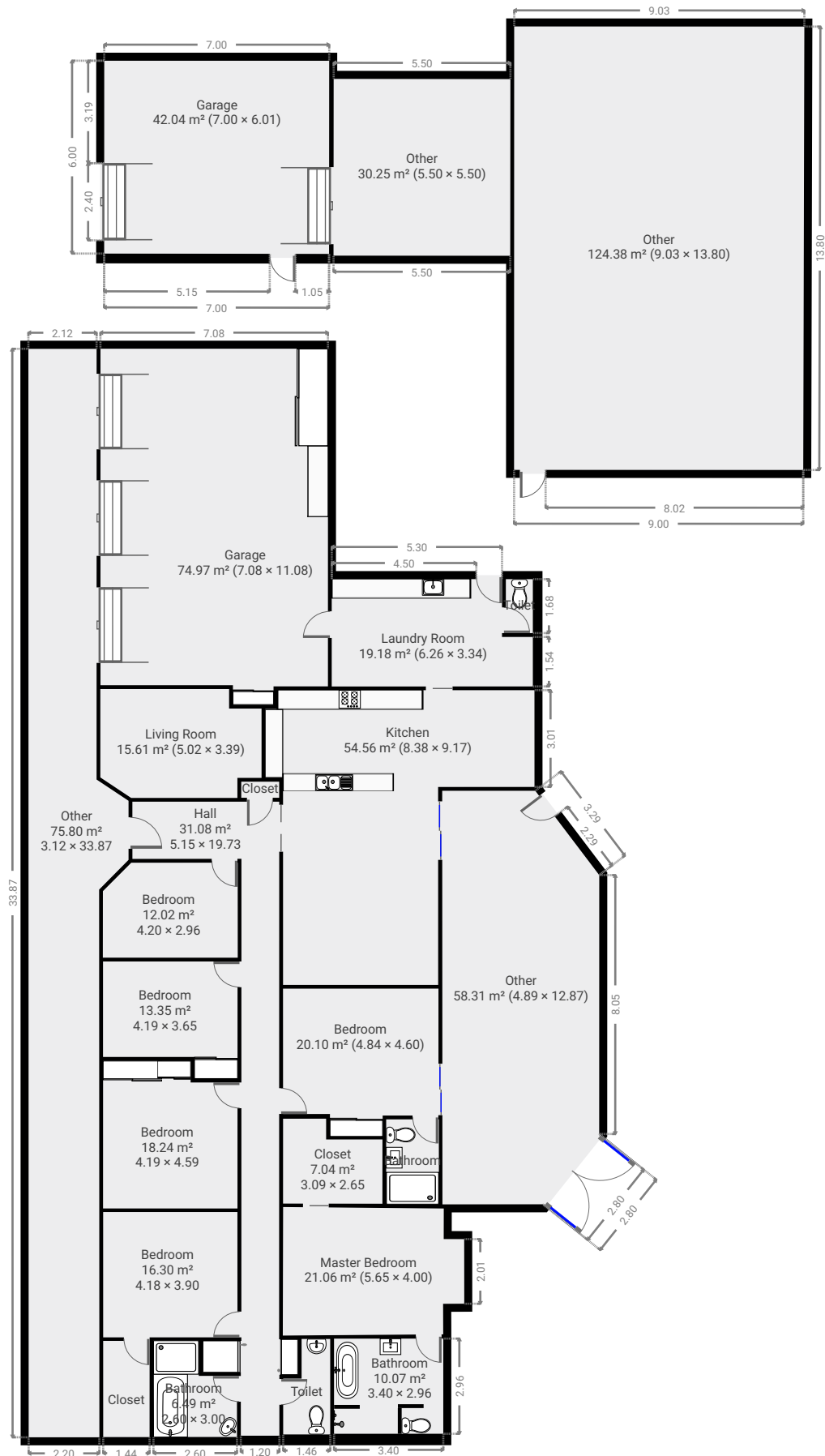
CREATED ON

2021-11-25

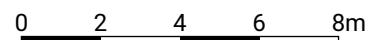
Floors

1

▼ Ground Floor



THIS FLOORPLAN IS PROVIDED WITHOUT WARRANTY OF ANY KIND. SENSOPIA DISCLAIMS ANY WARRANTY INCLUDING, WITHOUT LIMITATION, SATISFACTORY QUALITY OR ACCURACY OF DIMENSIONS.



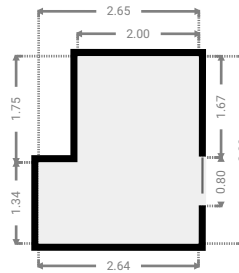
2 Jewell Court

FLOORS: 1



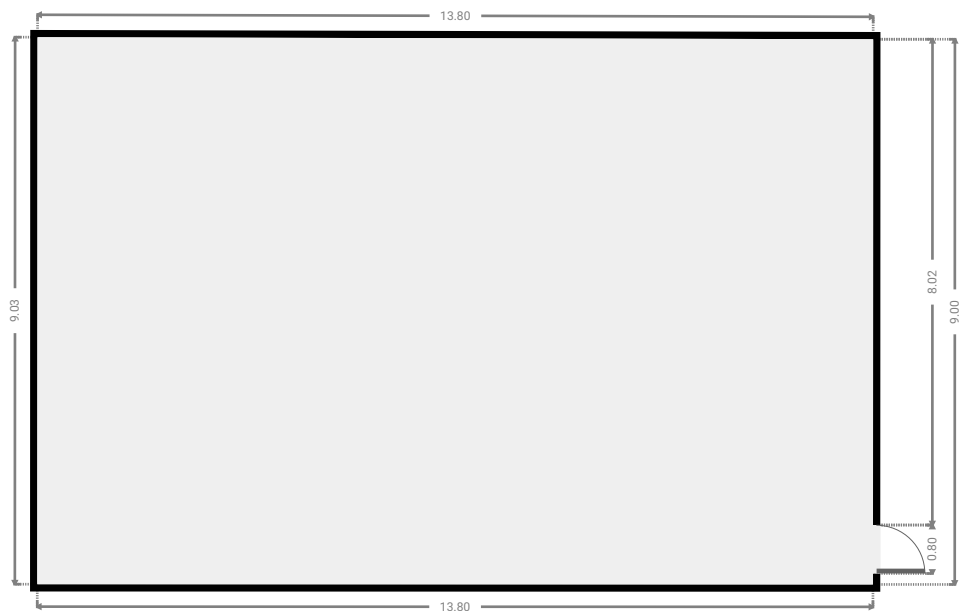
▼ Closet Ground Floor

WIDTH: 2.65 m • LENGTH: 3.09 m
AREA: 7.04 m² • PERIMETER: 11.47 m



▼ Other Ground Floor

WIDTH: 13.80 m • LENGTH: 9.03 m
AREA: 124.38 m² • PERIMETER: 45.62 m



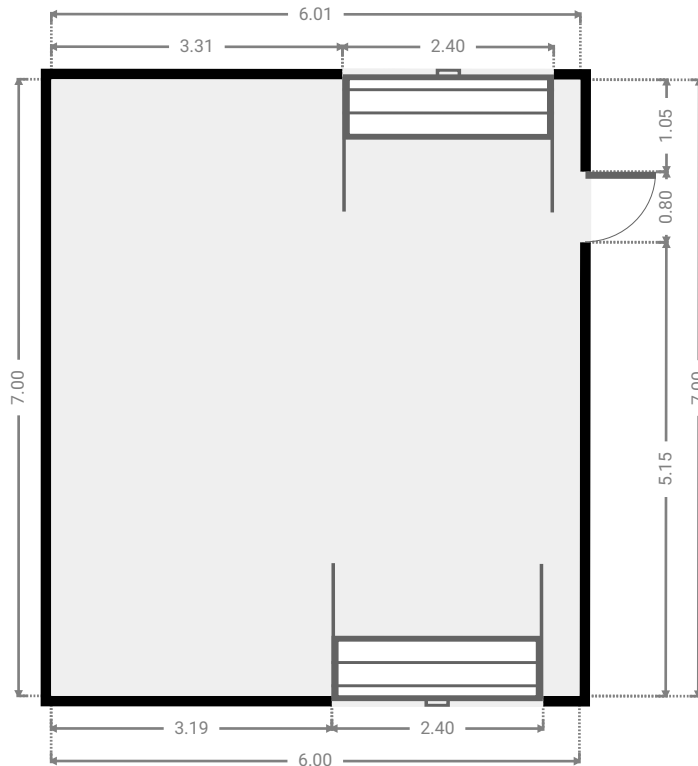
2 Jewell Court

FLOORS: 1



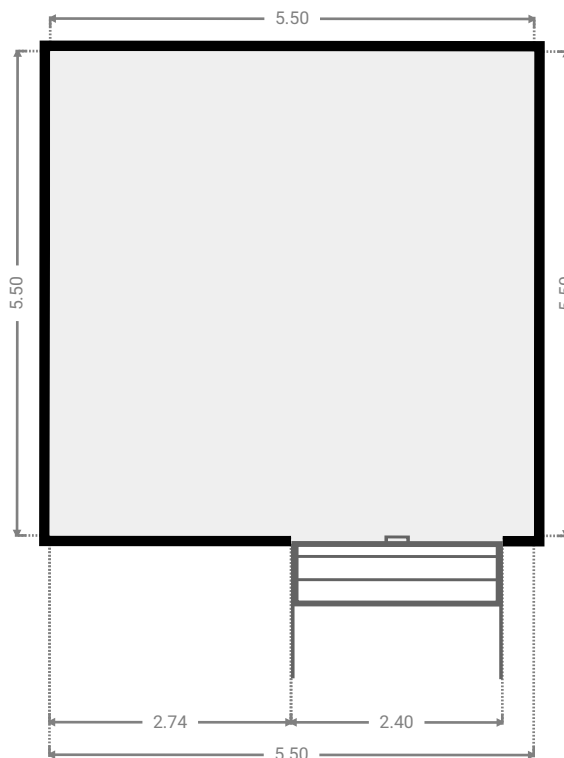
▼ Garage Ground Floor

WIDTH: 6.01 m • LENGTH: 7.00 m
AREA: 42.04 m² • PERIMETER: 26.01 m

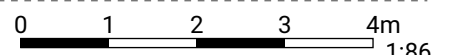


▼ Other Ground Floor

WIDTH: 5.50 m • LENGTH: 5.50 m
AREA: 30.25 m² • PERIMETER: 22.00 m



THIS FLOORPLAN IS PROVIDED WITHOUT WARRANTY OF ANY KIND. SENSOPIA DISCLAIMS ANY WARRANTY INCLUDING, WITHOUT LIMITATION, SATISFACTORY QUALITY OR ACCURACY OF DIMENSIONS.



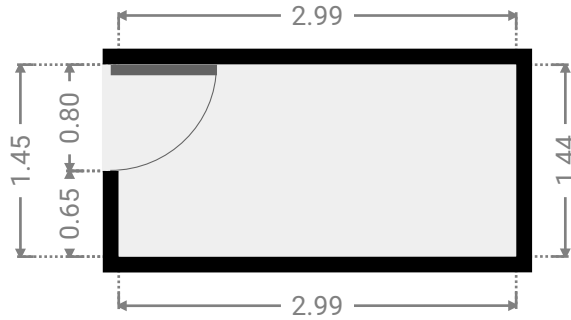
2 Jewell Court

FLOORS: 1



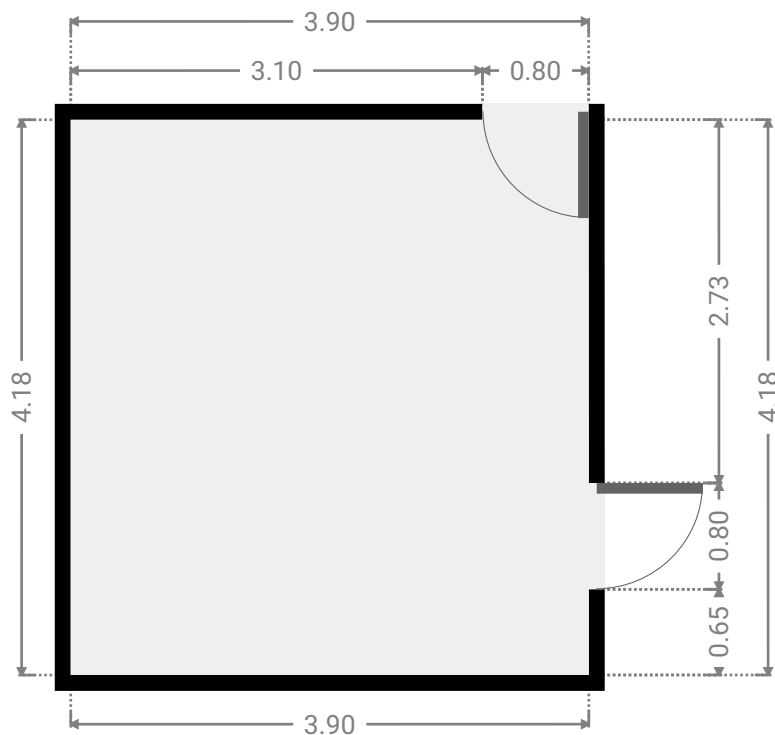
▼ Closet Ground Floor

WIDTH: 2.99 m • LENGTH: 1.45 m
AREA: 4.32 m² • PERIMETER: 8.87 m



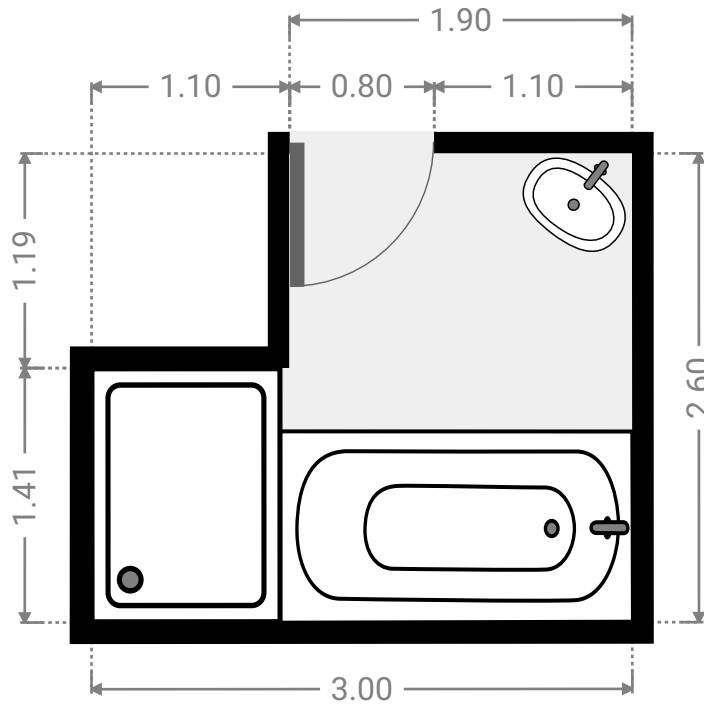
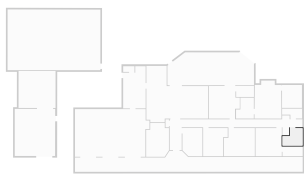
▼ Bedroom Ground Floor

WIDTH: 3.90 m • LENGTH: 4.18 m
AREA: 16.30 m² • PERIMETER: 16.16 m



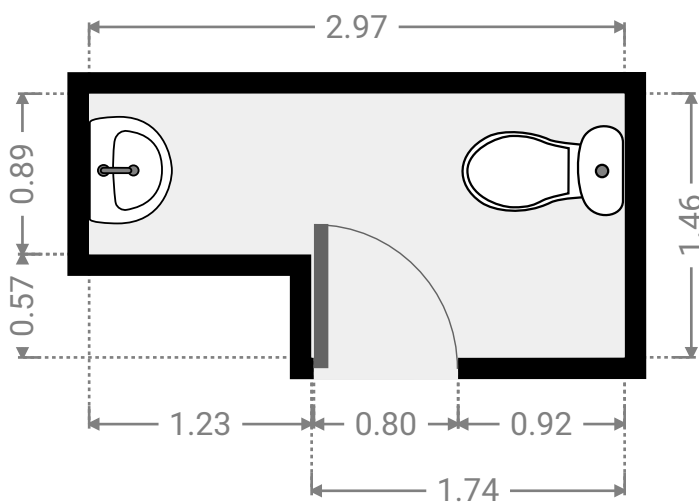
▼ Bathroom Ground Floor

WIDTH: 3.00 m • LENGTH: 2.60 m
AREA: 6.49 m² • PERIMETER: 11.20 m



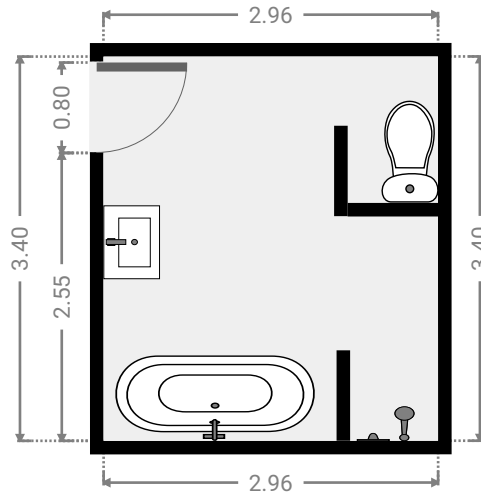
▼ Toilet Ground Floor

WIDTH: 2.97 m • LENGTH: 1.46 m
AREA: 3.64 m² • PERIMETER: 8.87 m



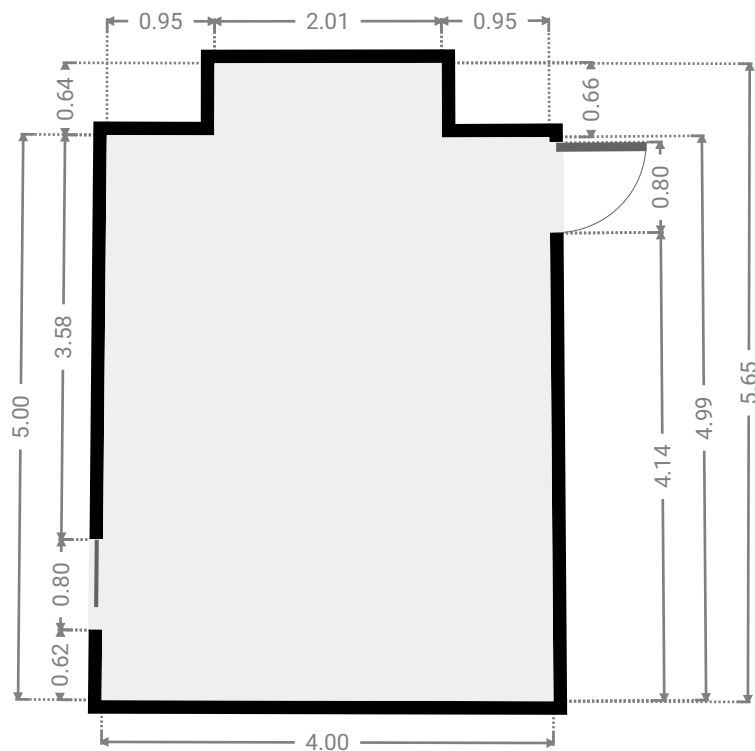
▼ Bathroom Ground Floor

WIDTH: 2.96 m • LENGTH: 3.40 m
AREA: 10.07 m² • PERIMETER: 12.72 m



▼ Master Bedroom Ground Floor

WIDTH: 4.00 m • LENGTH: 5.65 m
AREA: 21.06 m² • PERIMETER: 19.20 m



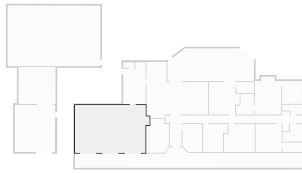
2 Jewell Court

FLOORS: 1



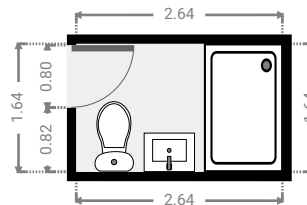
▼ Garage Ground Floor

WIDTH: 11.08 m • LENGTH: 7.08 m
AREA: 74.97 m² • PERIMETER: 36.32 m



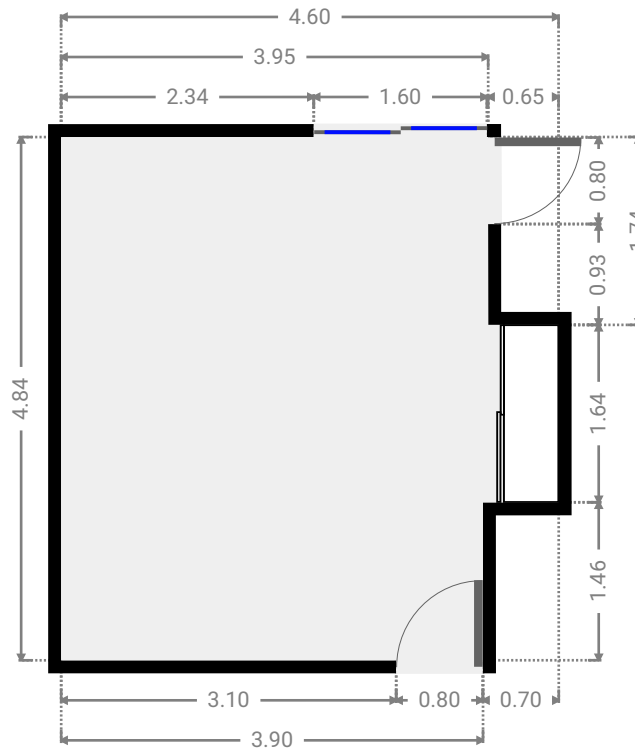
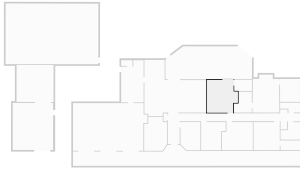
▼ Bathroom Ground Floor

WIDTH: 2.64 m • LENGTH: 1.64 m
AREA: 4.33 m² • PERIMETER: 8.56 m



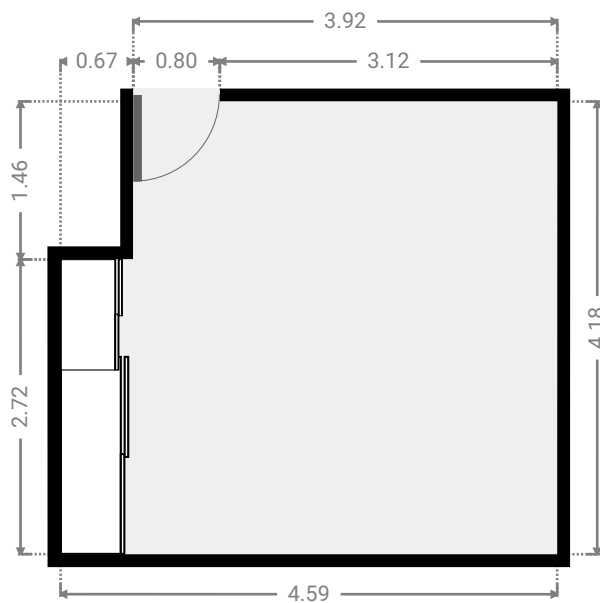
▼ **Bedroom**
Ground Floor

WIDTH: 4.60 m • LENGTH: 4.84 m
AREA: 20.10 m² • PERIMETER: 18.87 m



▼ **Bedroom**
Ground Floor

WIDTH: 4.59 m • LENGTH: 4.19 m
AREA: 18.24 m² • PERIMETER: 17.55 m



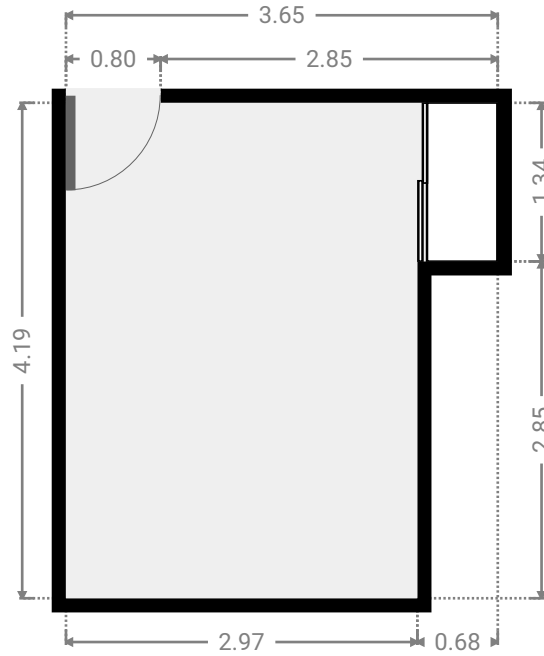
2 Jewell Court

FLOORS: 1



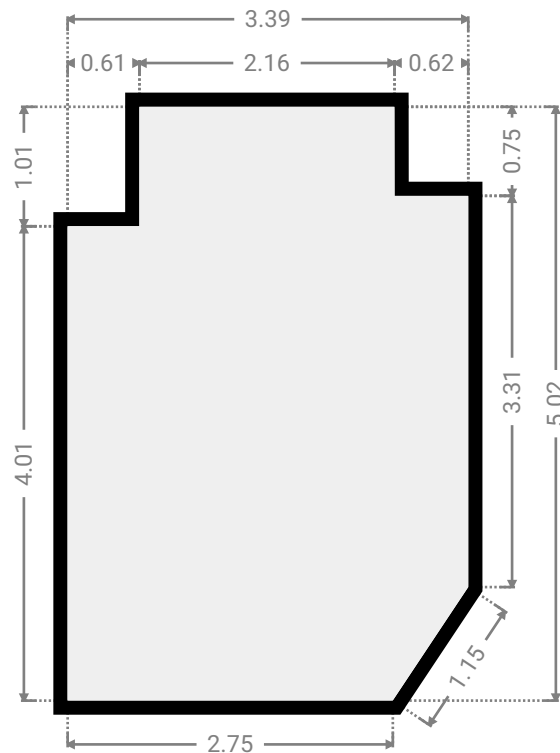
▼ Bedroom Ground Floor

WIDTH: 3.65 m • LENGTH: 4.19 m
AREA: 13.35 m² • PERIMETER: 15.67 m



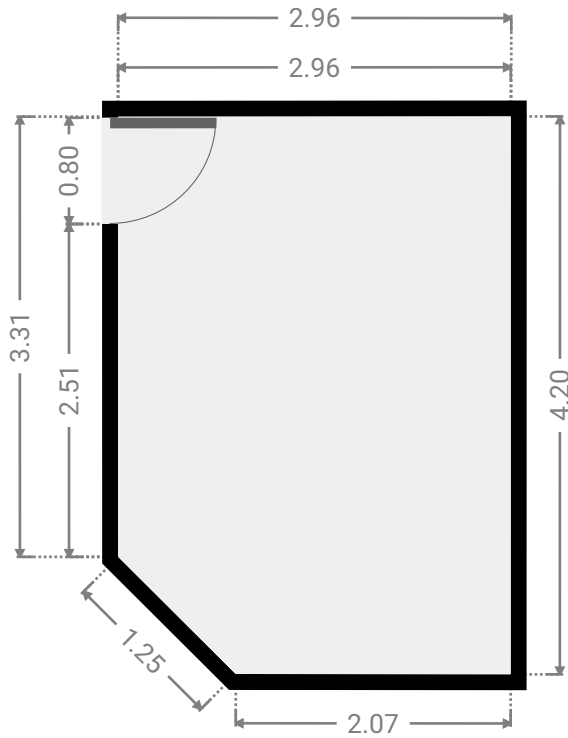
▼ Living Room Ground Floor

WIDTH: 3.39 m • LENGTH: 5.02 m
AREA: 15.61 m² • PERIMETER: 16.37 m



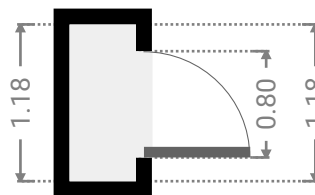
▼ Bedroom Ground Floor

WIDTH: 2.96 m • LENGTH: 4.20 m
AREA: 12.02 m² • PERIMETER: 13.79 m



▼ Closet Ground Floor

WIDTH: 0.50 m • LENGTH: 1.18 m
AREA: 0.59 m² • PERIMETER: 3.36 m



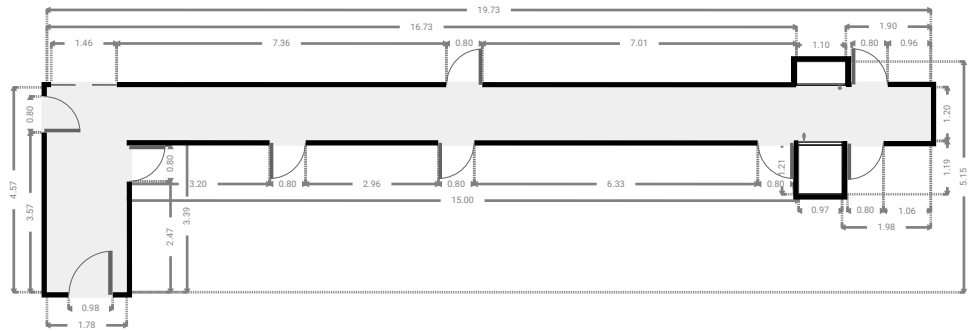
2 Jewell Court

FLOORS: 1



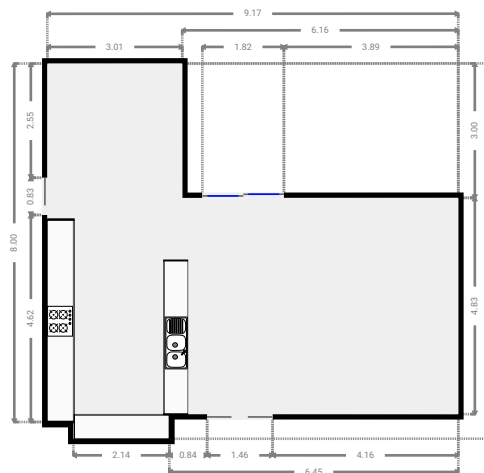
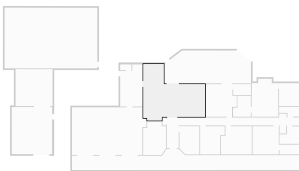
▼ Hall Ground Floor

WIDTH: 19.73 m • LENGTH: 5.15 m
AREA: 31.08 m² • PERIMETER: 52.17 m

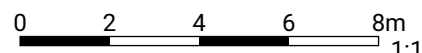


▼ Kitchen Ground Floor

WIDTH: 9.17 m • LENGTH: 8.38 m
AREA: 54.56 m² • PERIMETER: 35.09 m

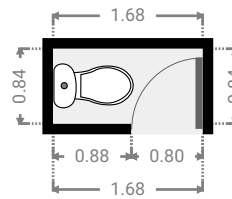


THIS FLOORPLAN IS PROVIDED WITHOUT WARRANTY OF ANY KIND. SENSOPIA DISCLAIMS ANY WARRANTY INCLUDING, WITHOUT LIMITATION, SATISFACTORY QUALITY OR ACCURACY OF DIMENSIONS.



▼ Toilet Ground Floor

WIDTH: 1.68 m • LENGTH: 0.84 m
AREA: 1.41 m² • PERIMETER: 5.04 m



▼ Laundry Room Ground Floor

WIDTH: 3.34 m • LENGTH: 6.26 m
AREA: 19.18 m² • PERIMETER: 19.20 m

