

2 Hibiscus Court

SUBMITTED BY
Ray White Rockhampton Casey
stockers@cqoz.com

CREATED ON
2022-11-15

Floors
1

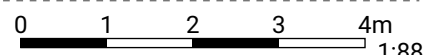
2 Hibiscus Court

FLOORS: 1

▼ Ground Floor

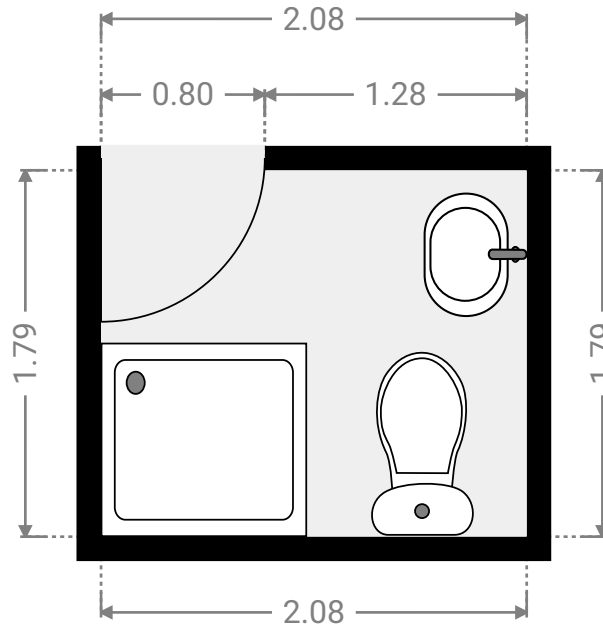
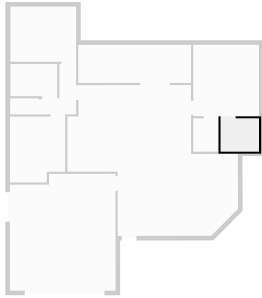


THIS FLOORPLAN IS PROVIDED WITHOUT WARRANTY OF ANY KIND. SENSOPIA DISCLAIMS ANY WARRANTY INCLUDING, WITHOUT LIMITATION, SATISFACTORY QUALITY OR ACCURACY OF DIMENSIONS.



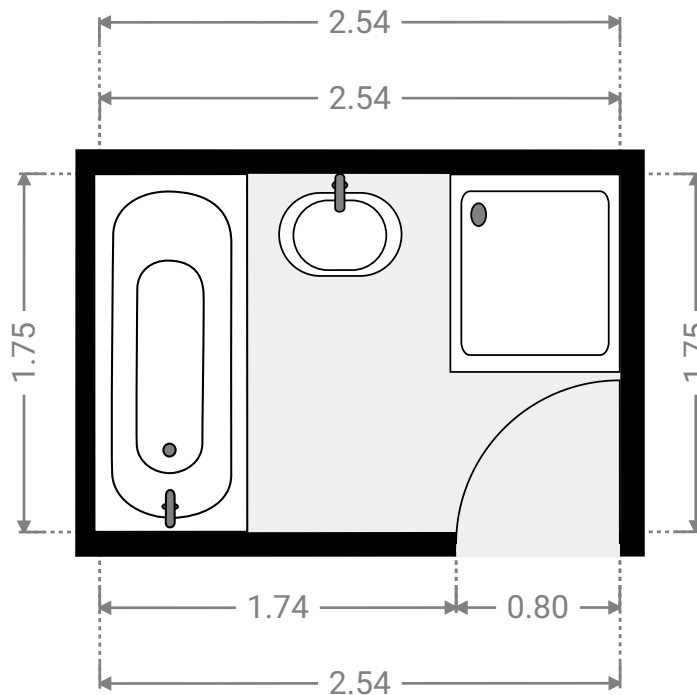
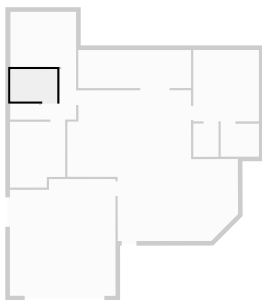
▼ Bathroom Ground Floor

WIDTH: 2.08 m • LENGTH: 1.79 m
AREA: 3.72 m² • PERIMETER: 7.74 m



▼ Bathroom Ground Floor

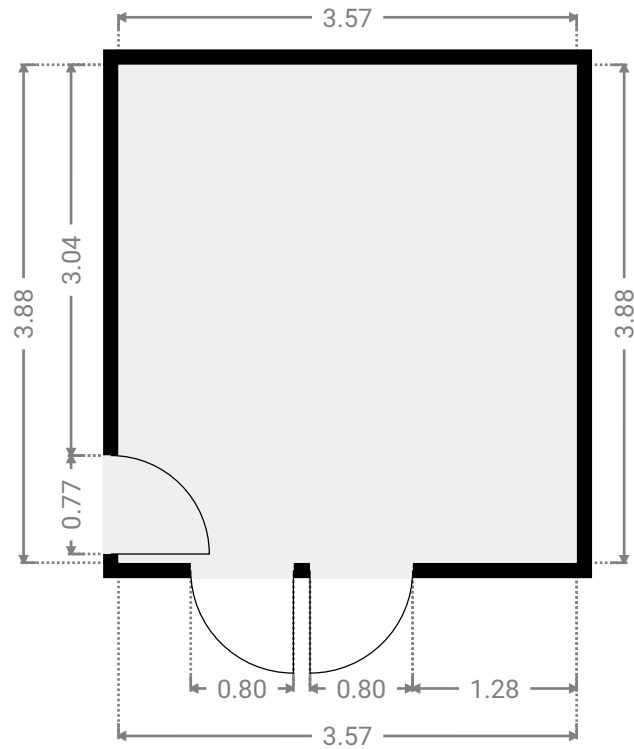
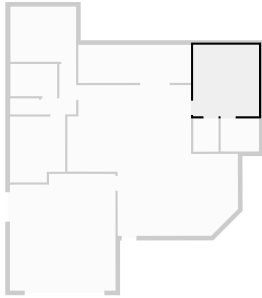
WIDTH: 2.54 m • LENGTH: 1.75 m
AREA: 4.45 m² • PERIMETER: 8.58 m



FLOORS: 1

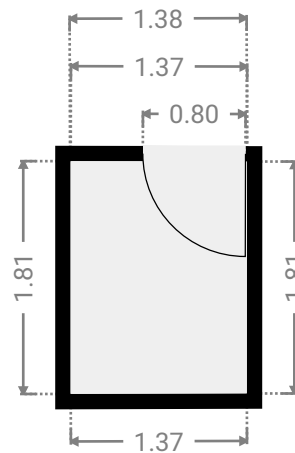
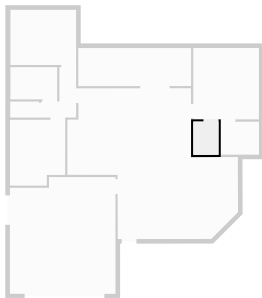
▼ Bedroom Ground Floor

WIDTH: 3.57 m • LENGTH: 3.88 m
AREA: 13.85 m² • PERIMETER: 14.90 m



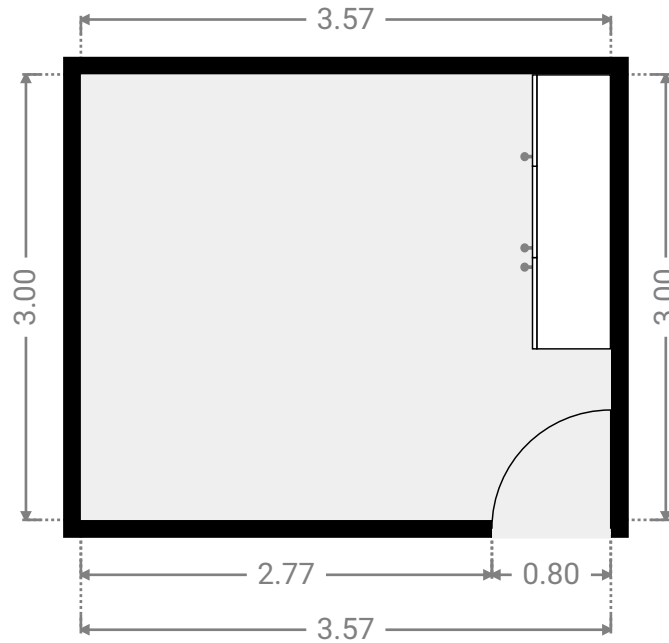
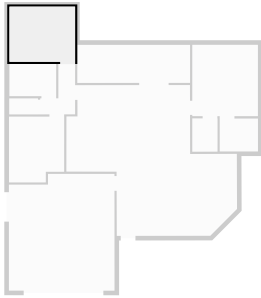
▼ Closet Ground Floor

WIDTH: 1.38 m • LENGTH: 1.81 m
AREA: 2.49 m² • PERIMETER: 6.37 m



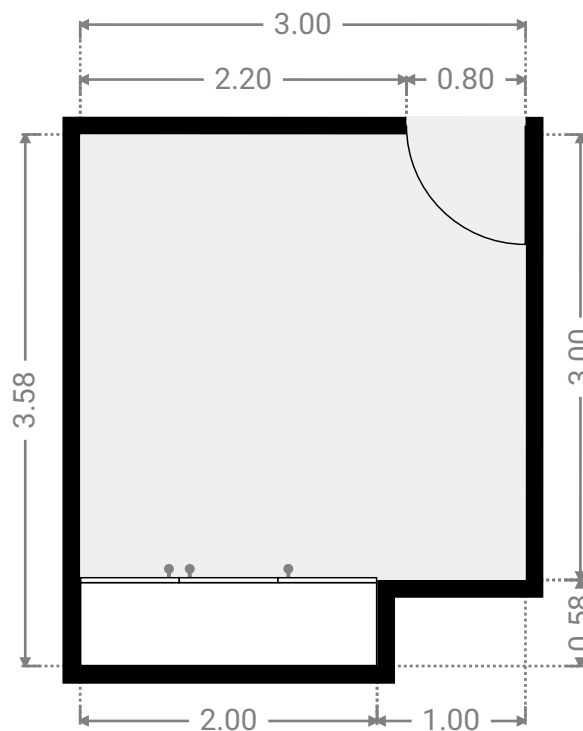
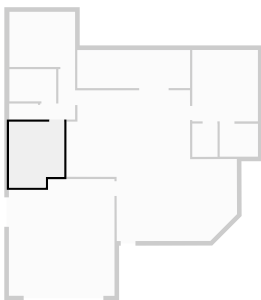
▼ Bedroom Ground Floor

WIDTH: 3.57 m • LENGTH: 3.00 m
AREA: 10.71 m² • PERIMETER: 13.14 m



▼ Bedroom Ground Floor

WIDTH: 3.00 m • LENGTH: 3.58 m
AREA: 10.16 m² • PERIMETER: 13.16 m



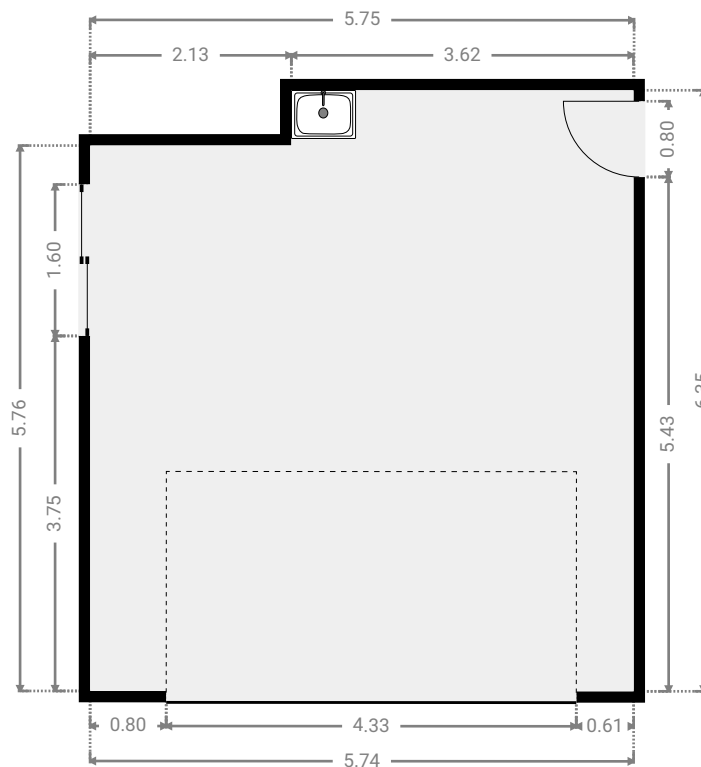
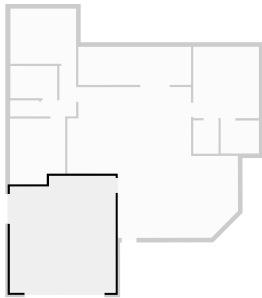
2 Hibiscus Court

FLOORS: 1



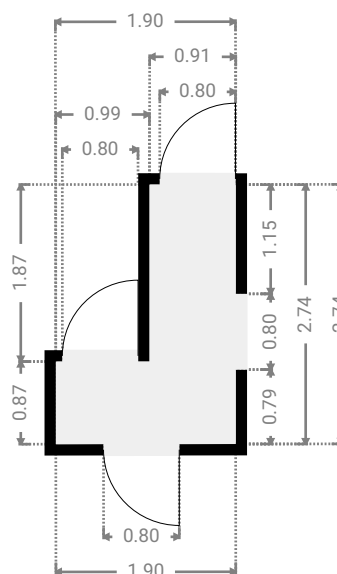
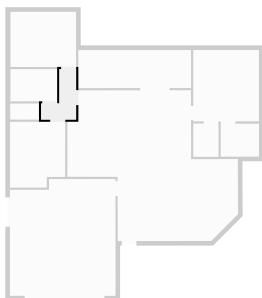
▼ Garage Ground Floor

WIDTH: 5.75 m • LENGTH: 6.35 m
AREA: 35.21 m² • PERIMETER: 24.18 m



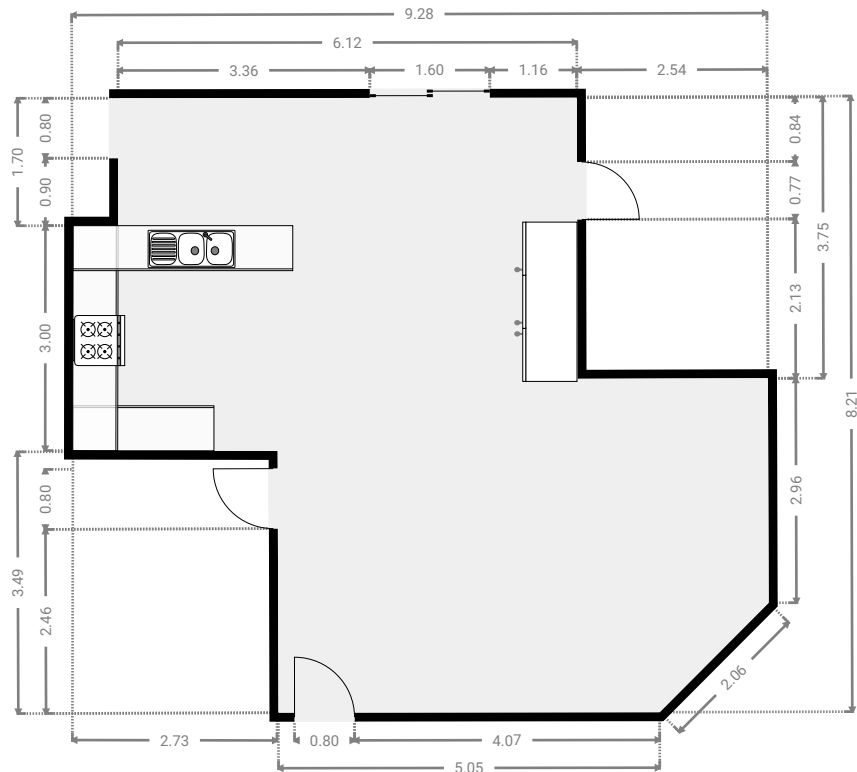
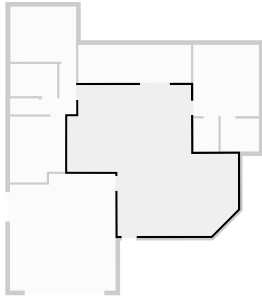
▼ Hall Ground Floor

WIDTH: 1.90 m • LENGTH: 2.74 m
AREA: 3.36 m² • PERIMETER: 9.28 m



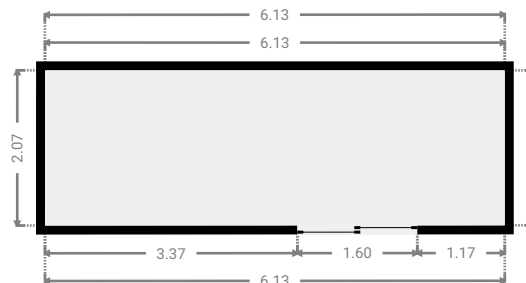
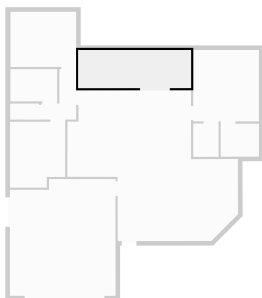
▼ Living Room Ground Floor

WIDTH: 9.28 m • LENGTH: 8.21 m
AREA: 54.85 m² • PERIMETER: 34.07 m



▼ Other Ground Floor

WIDTH: 6.13 m • LENGTH: 2.07 m
AREA: 12.69 m² • PERIMETER: 16.40 m



▼ Toilet Ground Floor

WIDTH: 1.56 m • LENGTH: 0.87 m
AREA: 1.36 m² • PERIMETER: 4.87 m

