

2 Clonmel Avenue

SUBMITTED BY

Ray White Rockhampton Casey
stockers@cqoz.com

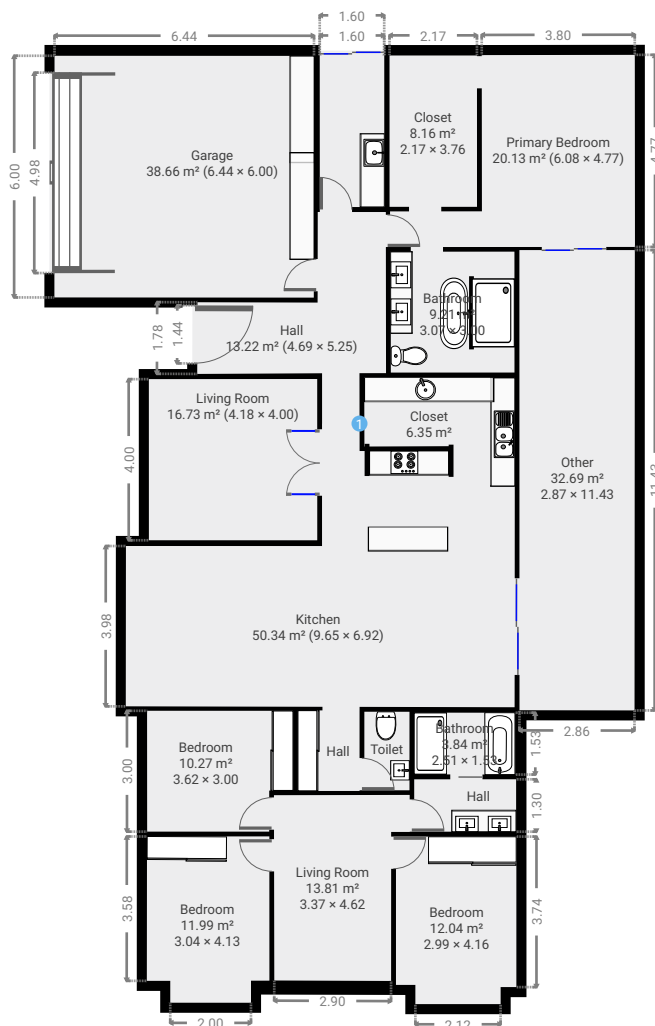
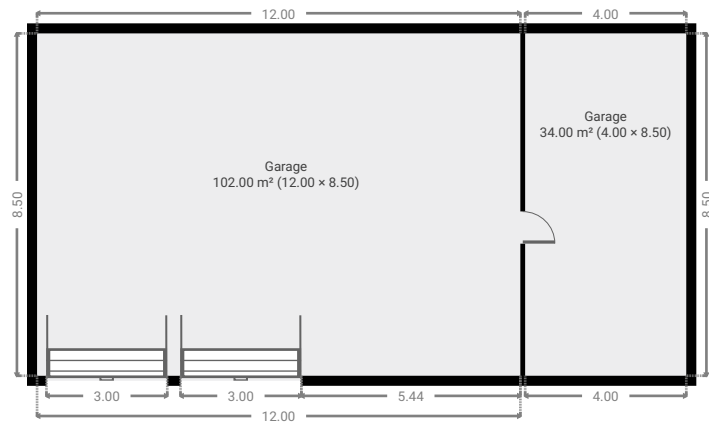
CREATED ON

2022-08-29

Floors

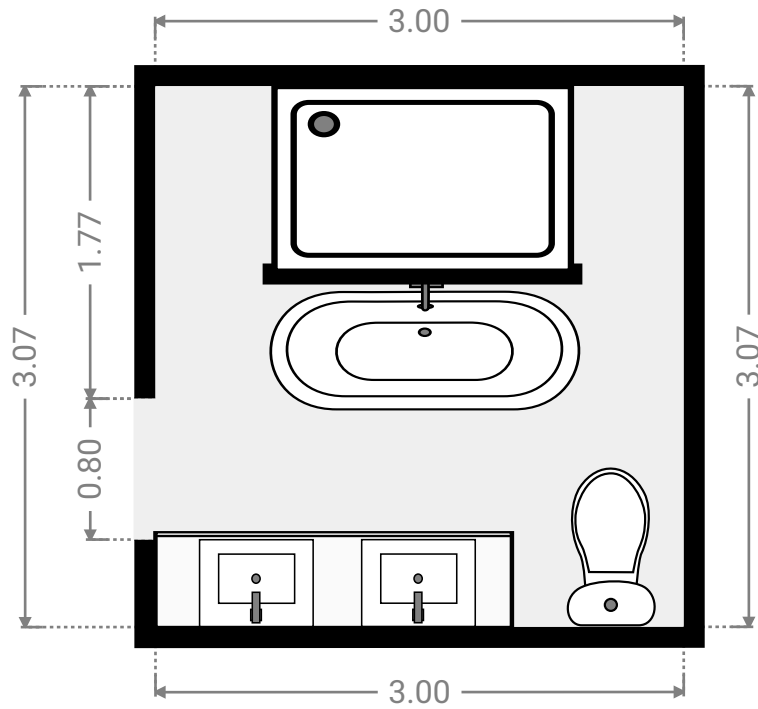
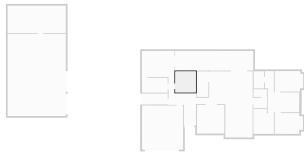
1

▼ Ground Floor



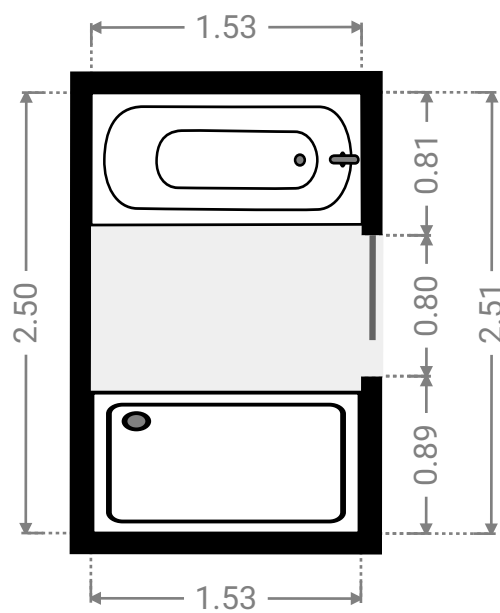
▼ **Bathroom**
Ground Floor

WIDTH: 3.00 m • LENGTH: 3.07 m
AREA: 9.21 m² • PERIMETER: 12.14 m



▼ **Bathroom**
Ground Floor

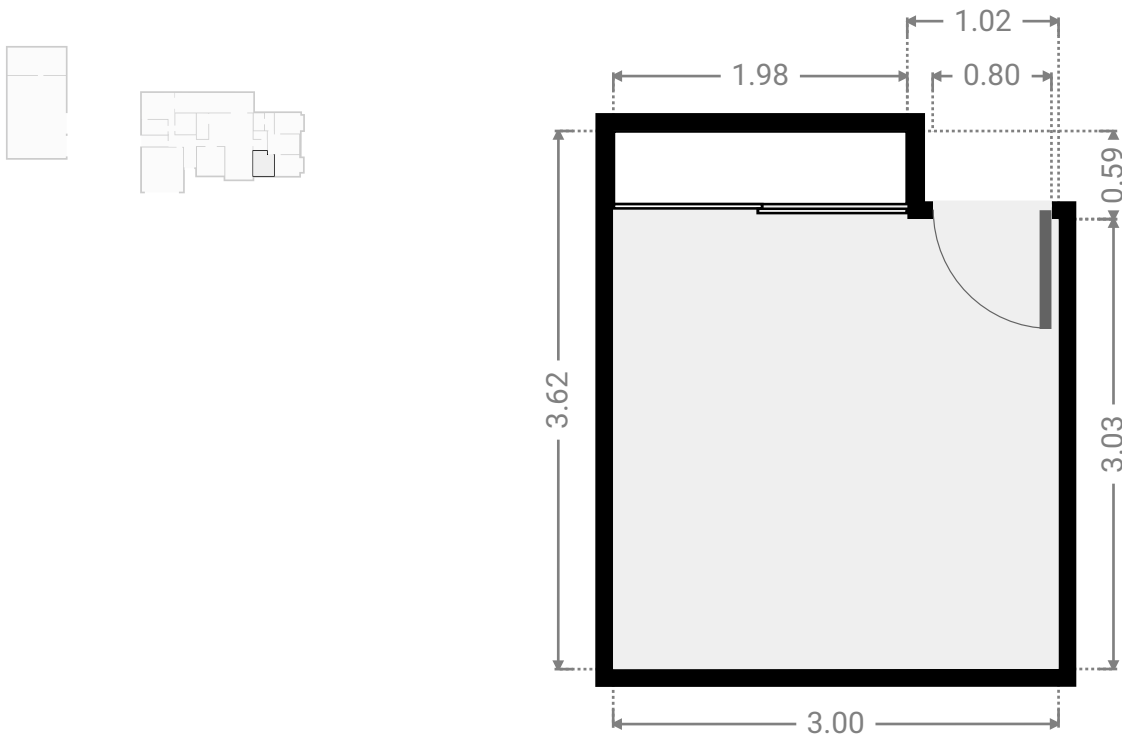
WIDTH: 1.53 m • LENGTH: 2.51 m
AREA: 3.84 m² • PERIMETER: 8.08 m



FLOORS: 1

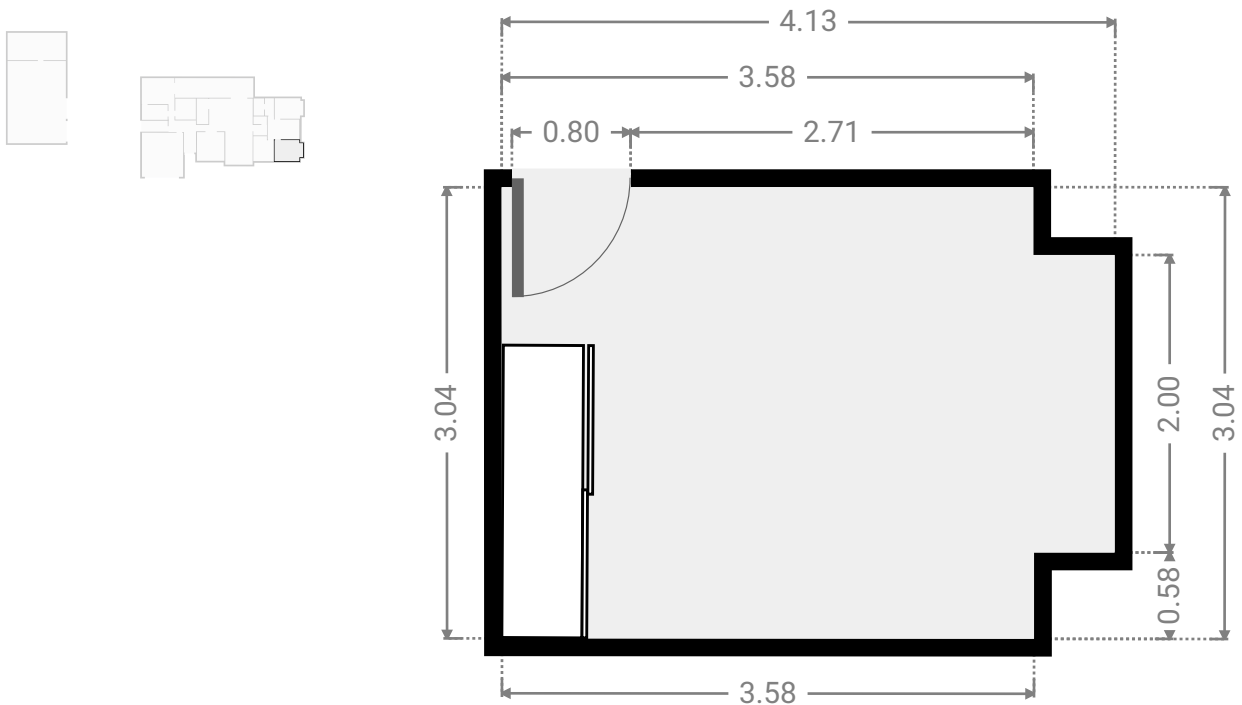
▼ **Bedroom**
Ground Floor

WIDTH: 3.00 m • LENGTH: 3.62 m
AREA: 10.27 m² • PERIMETER: 13.25 m



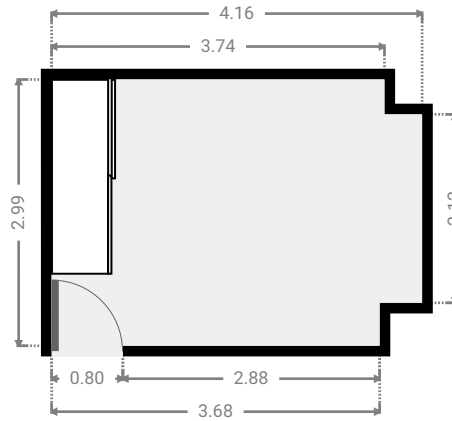
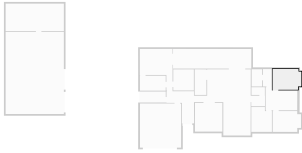
▼ **Bedroom**
Ground Floor

WIDTH: 4.13 m • LENGTH: 3.04 m
AREA: 11.99 m² • PERIMETER: 14.34 m



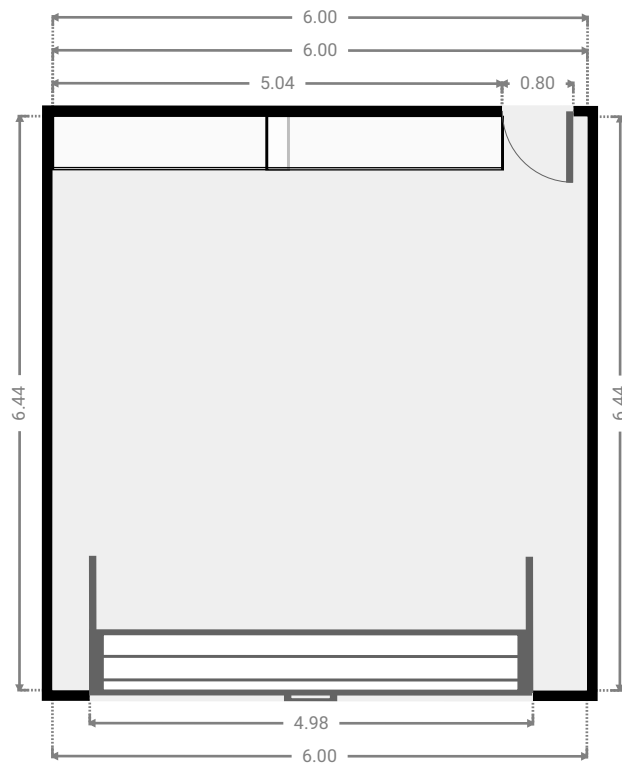
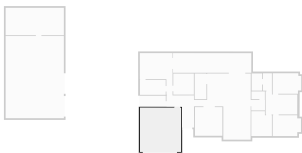
▼ Bedroom Ground Floor

WIDTH: 4.16 m • LENGTH: 2.99 m
AREA: 12.04 m² • PERIMETER: 14.30 m



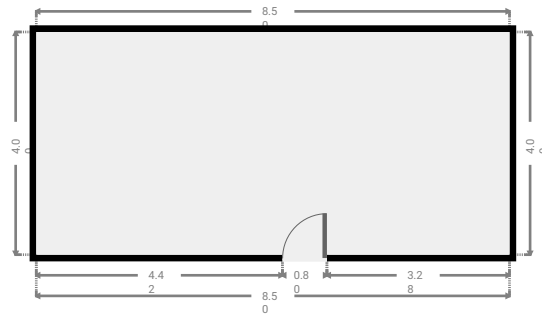
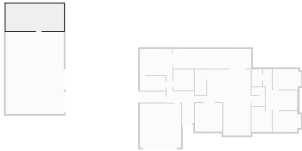
▼ Garage Ground Floor

WIDTH: 6.00 m • LENGTH: 6.44 m
AREA: 38.66 m² • PERIMETER: 24.88 m



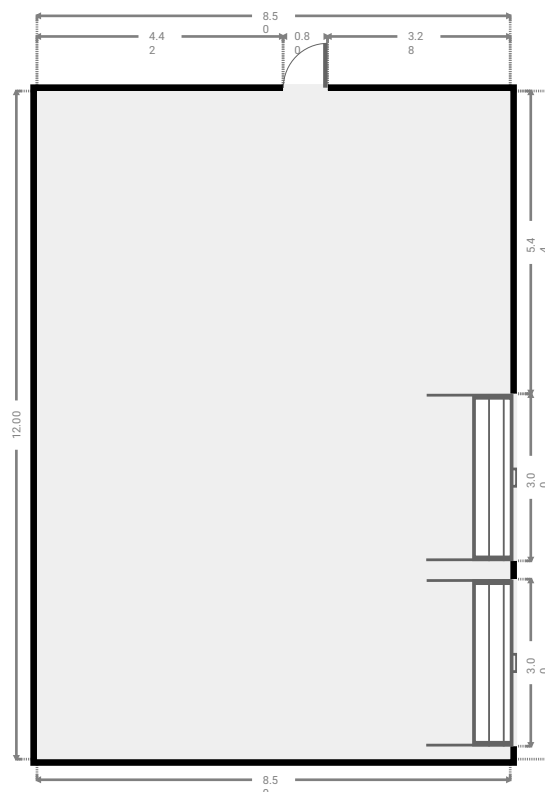
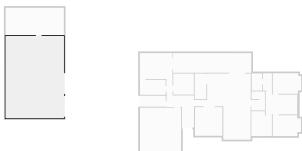
▼ Garage Ground Floor

WIDTH: 8.50 m • LENGTH: 4.00 m
AREA: 34.00 m² • PERIMETER: 25.00 m



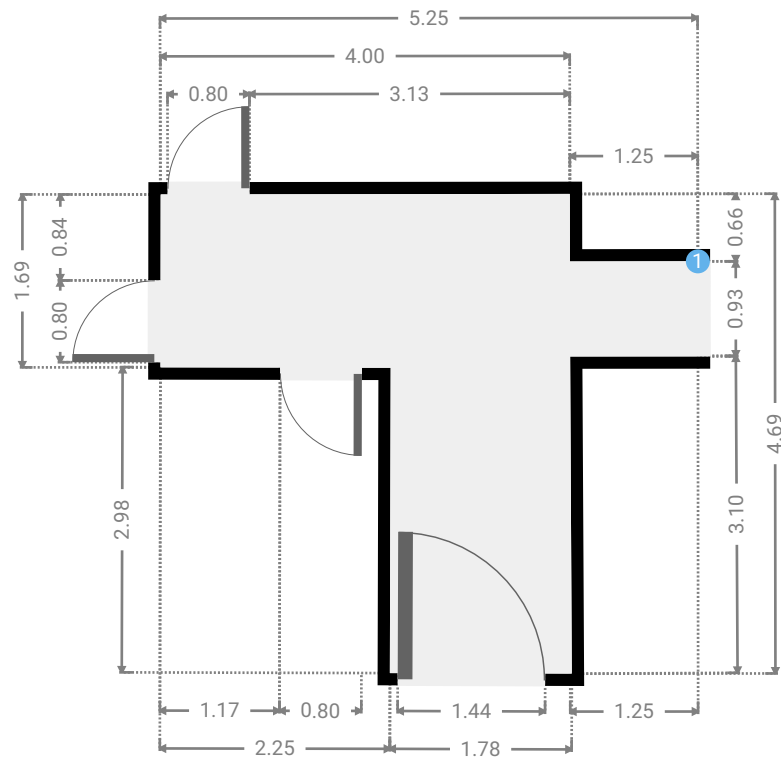
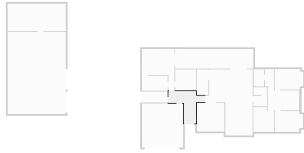
▼ Garage Ground Floor

WIDTH: 8.50 m • LENGTH: 12.00 m
AREA: 102.00 m² • PERIMETER: 41.00 m



▼ Hall Ground Floor

WIDTH: 5.25 m • LENGTH: 4.69 m
AREA: 13.22 m² • PERIMETER: 19.89 m



▼ Hall/Ground Floor

1 OPENING

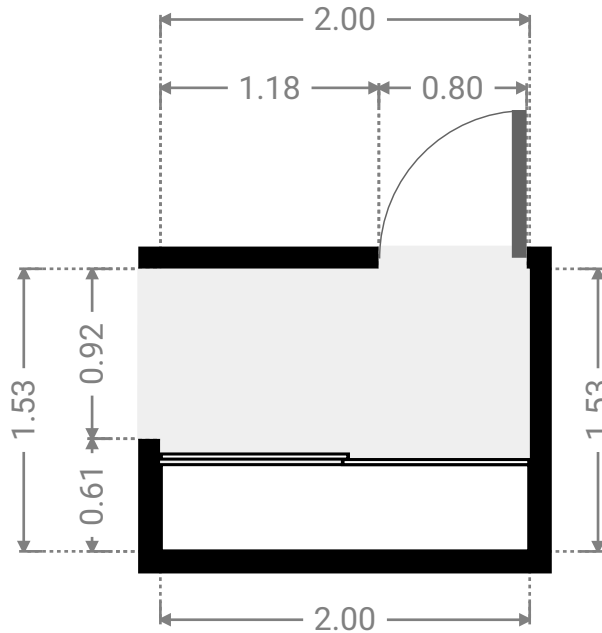
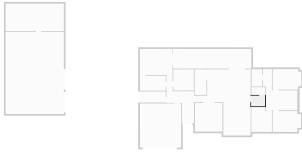
Height
0.00 m



FLOORS: 1

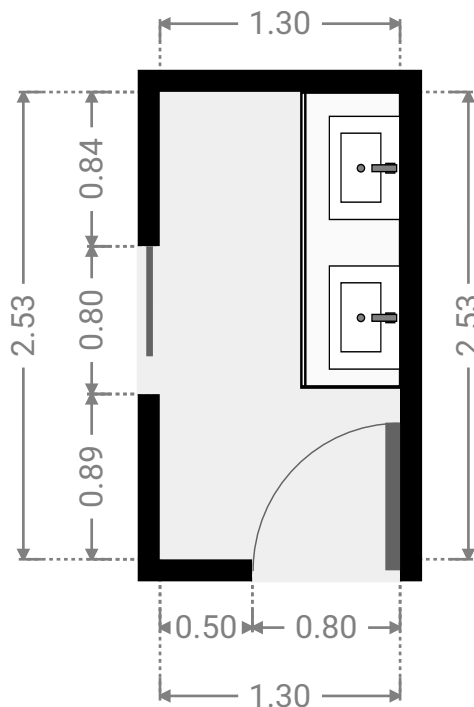
▼ **Hall**
Ground Floor

WIDTH: 2.00 m • LENGTH: 1.53 m
AREA: 3.06 m² • PERIMETER: 7.06 m



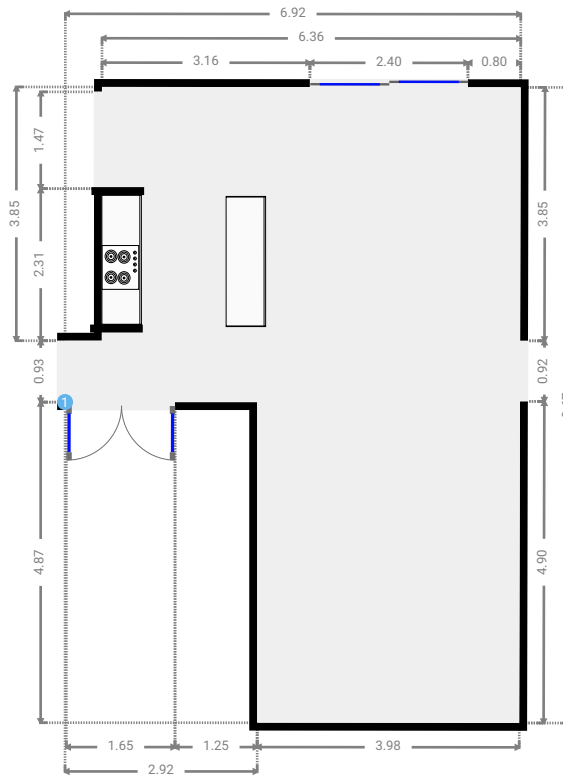
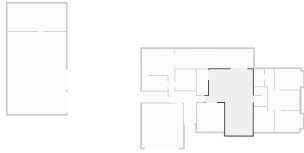
▼ **Hall**
Ground Floor

WIDTH: 1.30 m • LENGTH: 2.53 m
AREA: 3.29 m² • PERIMETER: 7.66 m



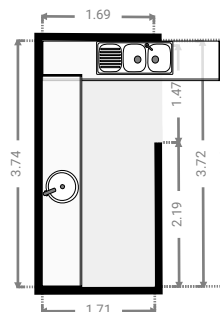
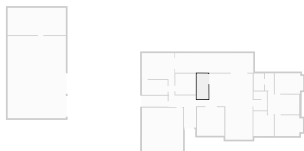
▼ Kitchen Ground Floor

WIDTH: 6.92 m • LENGTH: 9.65 m
AREA: 50.34 m² • PERIMETER: 33.13 m



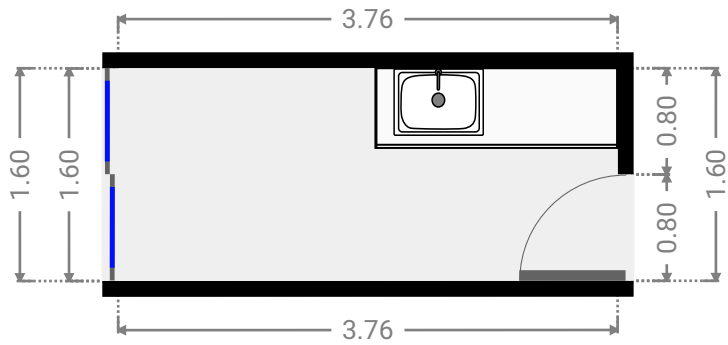
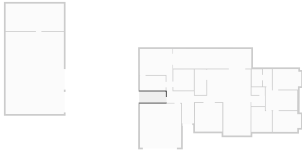
▼ Closet Ground Floor

WIDTH: 1.71 m • LENGTH: 3.74 m
AREA: 6.35 m² • PERIMETER: 10.86 m



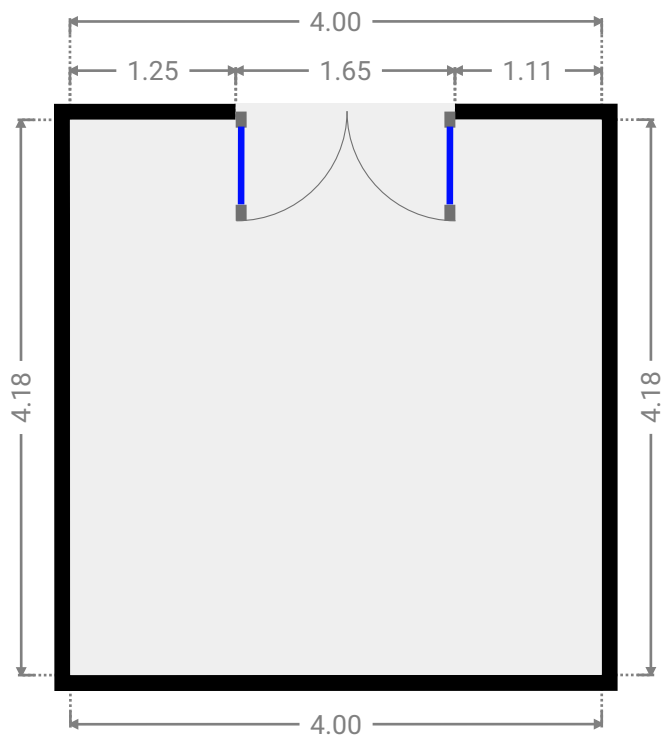
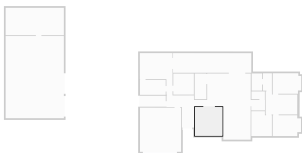
▼ **Laundry Room**
Ground Floor

WIDTH: 3.76 m • LENGTH: 1.60 m
AREA: 6.02 m² • PERIMETER: 10.72 m



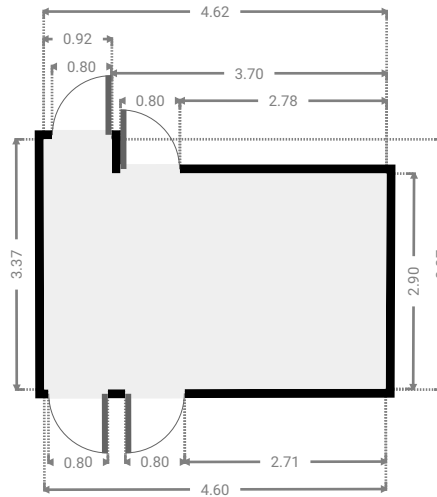
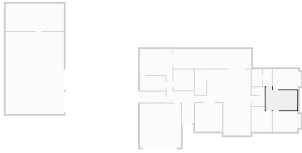
▼ **Living Room**
Ground Floor

WIDTH: 4.00 m • LENGTH: 4.18 m
AREA: 16.73 m² • PERIMETER: 16.36 m



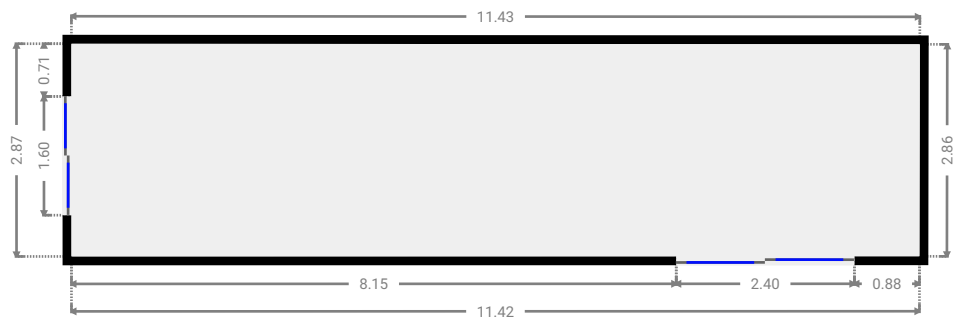
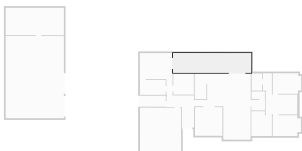
▼ Living Room Ground Floor

WIDTH: 4.62 m • LENGTH: 3.37 m
AREA: 13.81 m² • PERIMETER: 15.95 m



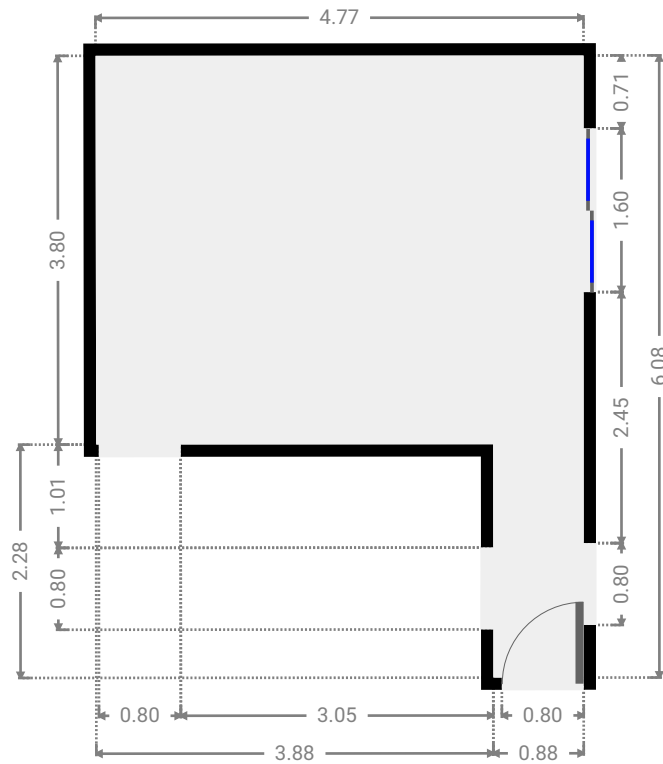
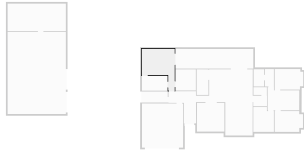
▼ Other Ground Floor

WIDTH: 11.43 m • LENGTH: 2.87 m
AREA: 32.69 m² • PERIMETER: 28.57 m



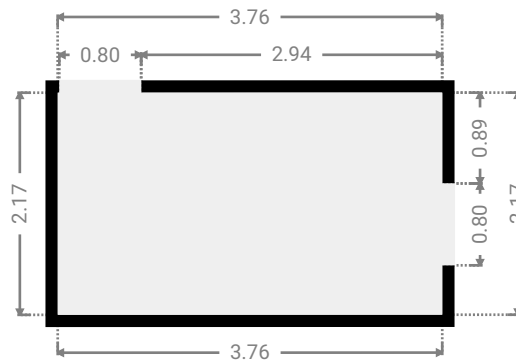
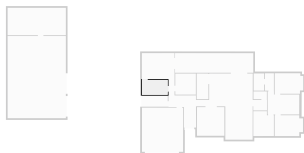
▼ Primary Bedroom Ground Floor

WIDTH: 4.77 m • LENGTH: 6.08 m
AREA: 20.13 m² • PERIMETER: 21.69 m



▼ Closet Ground Floor

WIDTH: 3.76 m • LENGTH: 2.17 m
AREA: 8.16 m² • PERIMETER: 11.86 m



▼ **Toilet**
Ground Floor

WIDTH: 1.95 m • LENGTH: 1.12 m
AREA: 2.18 m² • PERIMETER: 6.14 m

