

## 2 Bottlebrush Street

**SUBMITTED BY**  
Ray White Rockhampton Casey  
stockers@cqoz.com

---

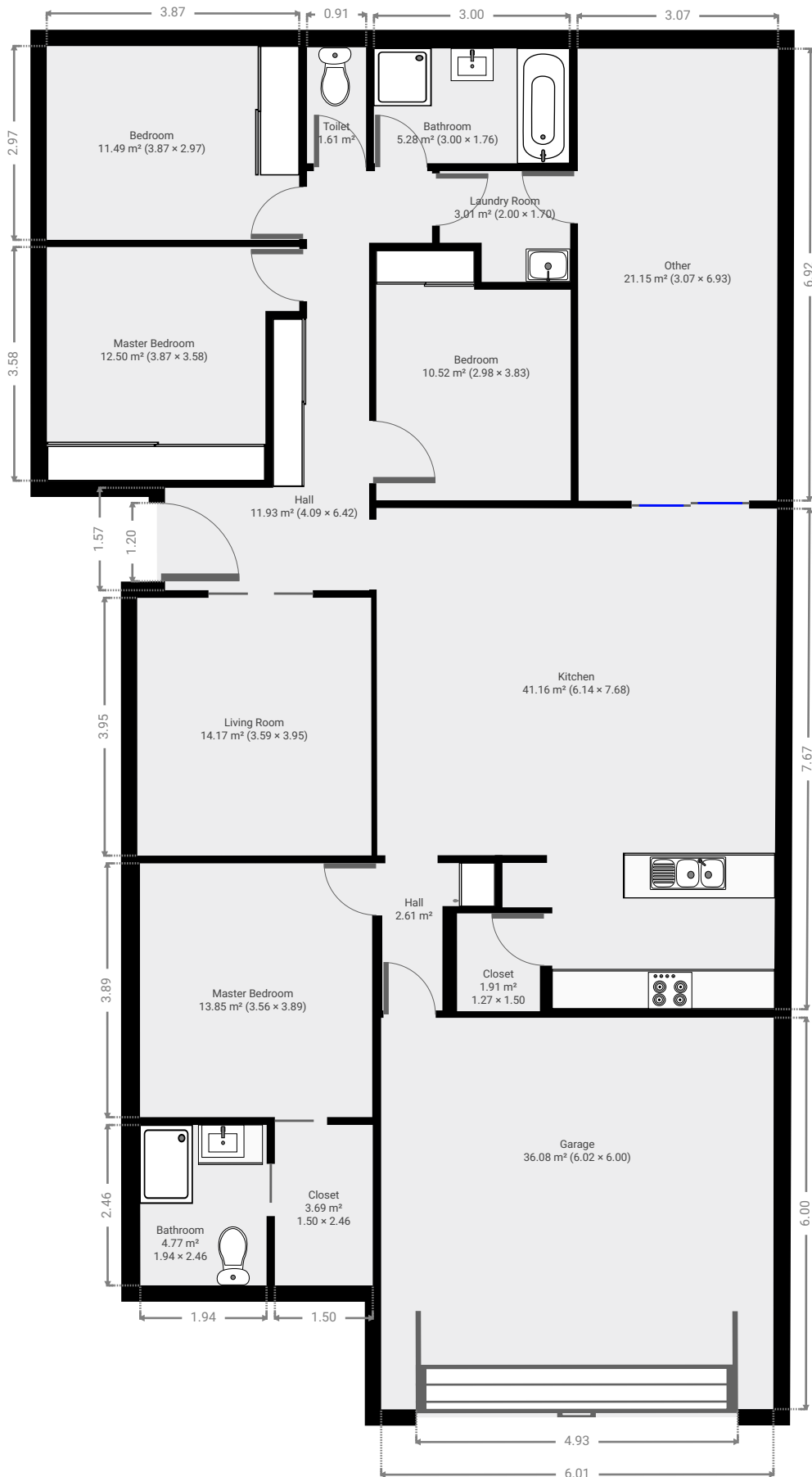
**CREATED ON**  
2022-02-02

---

**Floors**  
1

---

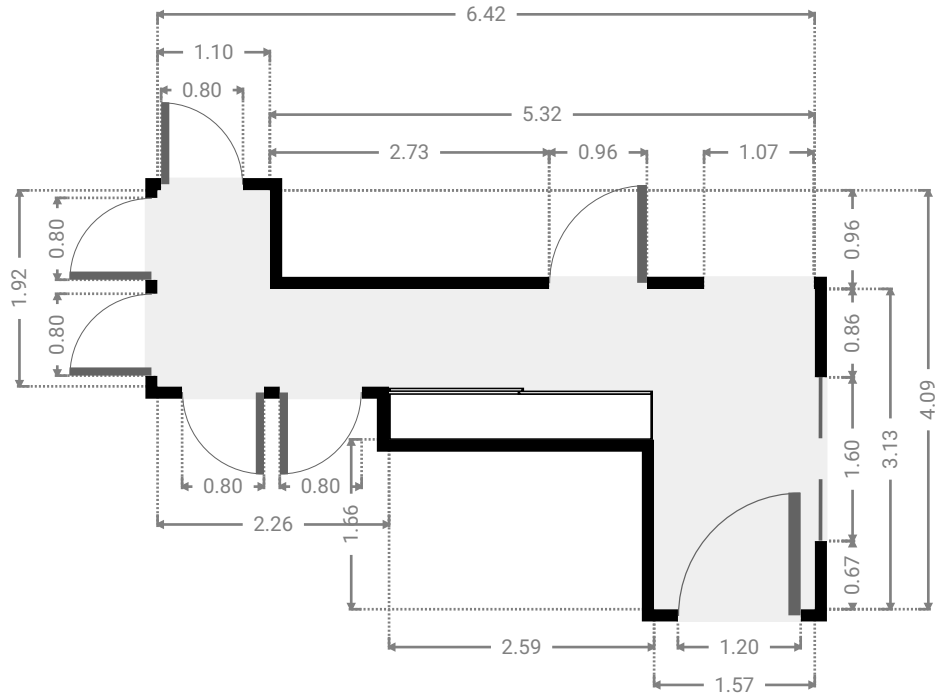
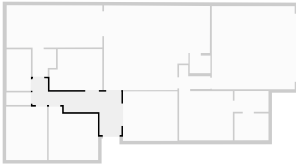
▼ Ground Floor



FLOORS: 1

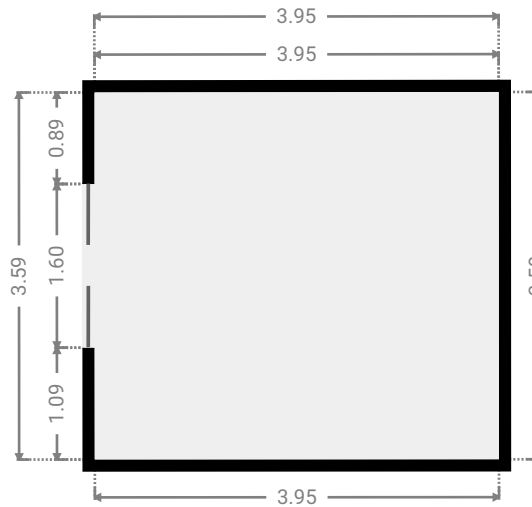
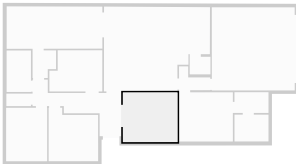
▼ **Hall**  
Ground Floor

WIDTH: 6.42 m • LENGTH: 4.09 m  
AREA: 11.93 m<sup>2</sup> • PERIMETER: 21.03 m



▼ **Living Room**  
Ground Floor

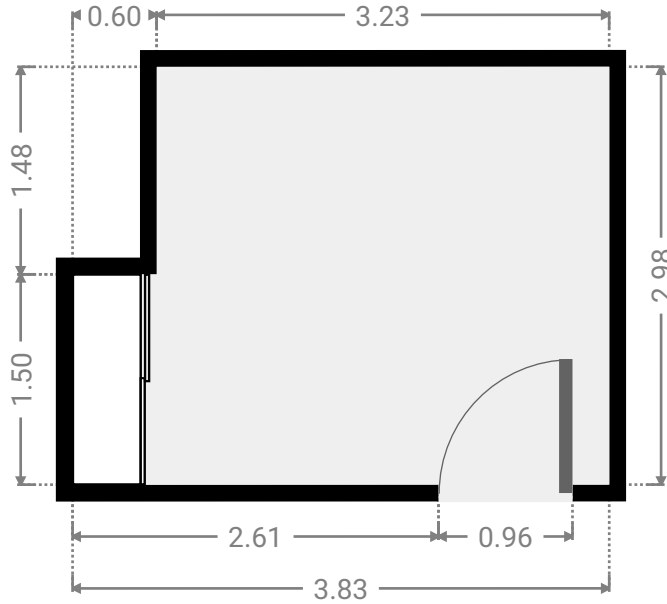
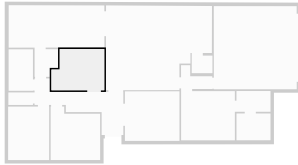
WIDTH: 3.95 m • LENGTH: 3.59 m  
AREA: 14.17 m<sup>2</sup> • PERIMETER: 15.08 m



FLOORS: 1

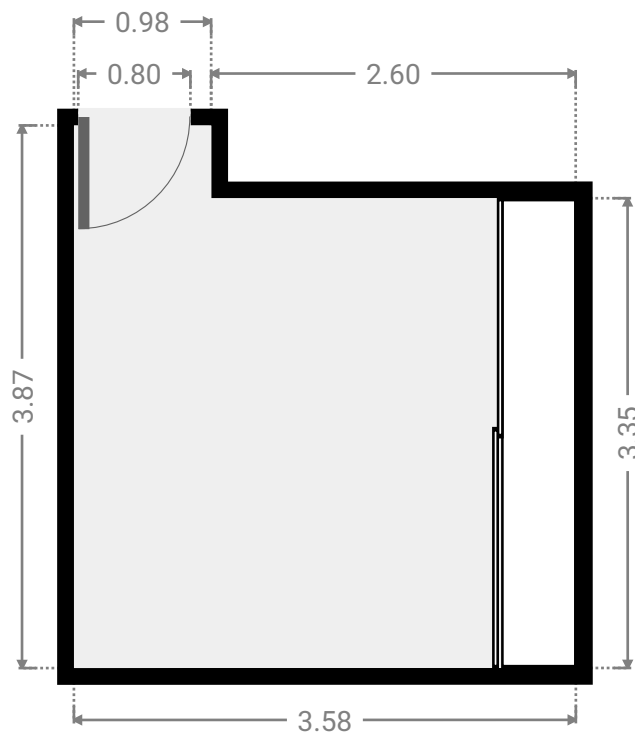
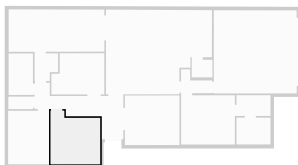
## ▼ Bedroom Ground Floor

WIDTH: 3.83 m • LENGTH: 2.98 m  
AREA: 10.52 m<sup>2</sup> • PERIMETER: 13.61 m



## ▼ Master Bedroom Ground Floor

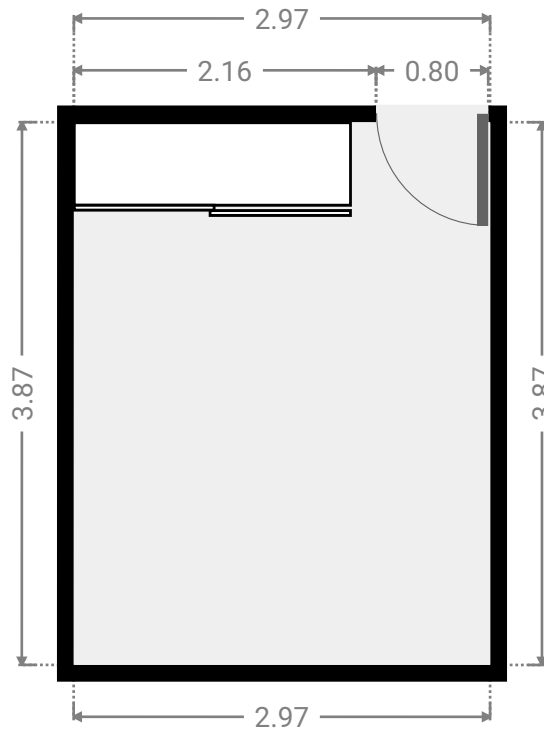
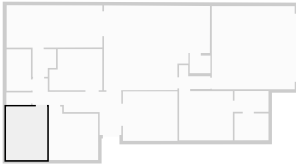
WIDTH: 3.58 m • LENGTH: 3.87 m  
AREA: 12.50 m<sup>2</sup> • PERIMETER: 14.90 m



FLOORS: 1

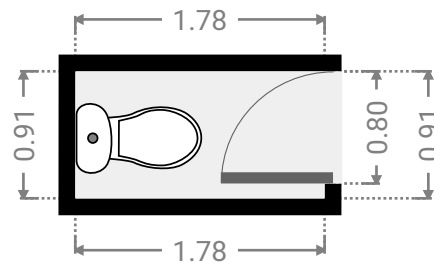
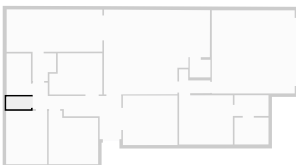
## ▼ Bedroom Ground Floor

WIDTH: 2.97 m • LENGTH: 3.87 m  
AREA: 11.49 m<sup>2</sup> • PERIMETER: 13.68 m



## ▼ Toilet Ground Floor

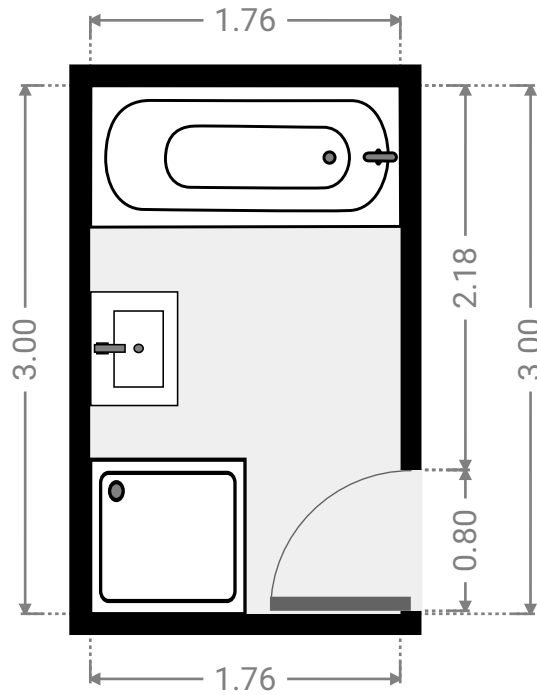
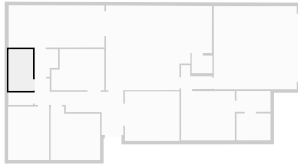
WIDTH: 1.78 m • LENGTH: 0.91 m  
AREA: 1.61 m<sup>2</sup> • PERIMETER: 5.37 m



FLOORS: 1

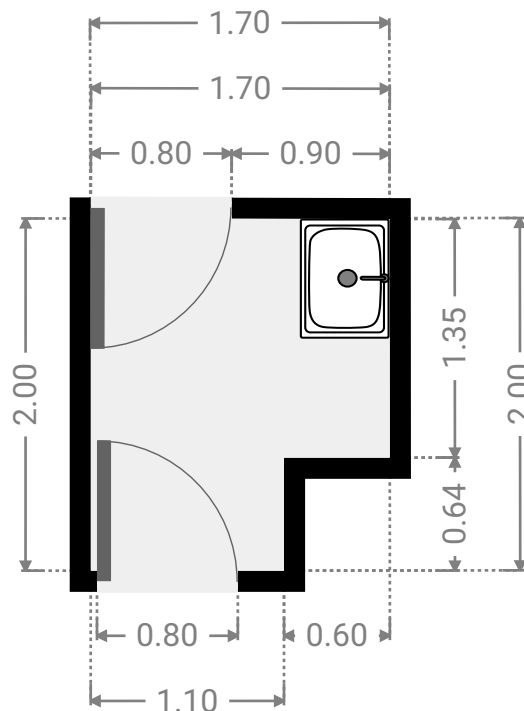
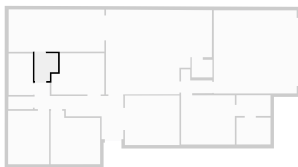
▼ **Bathroom**  
Ground Floor

WIDTH: 1.76 m • LENGTH: 3.00 m  
AREA: 5.28 m<sup>2</sup> • PERIMETER: 9.52 m



▼ **Laundry Room**  
Ground Floor

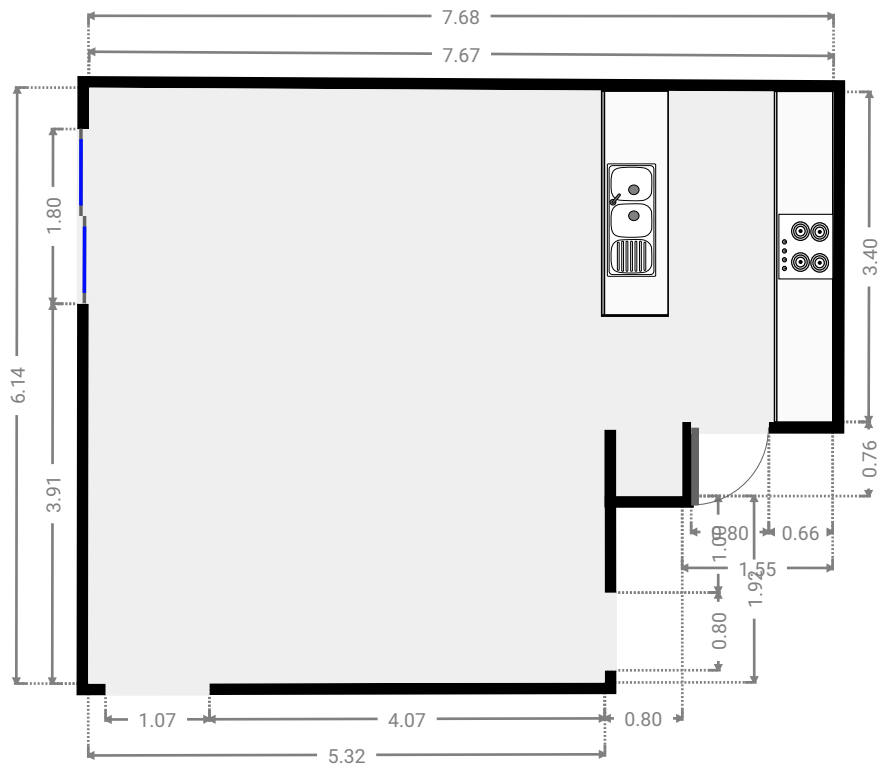
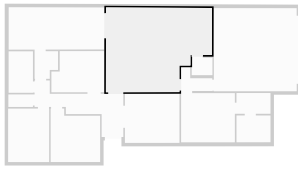
WIDTH: 1.70 m • LENGTH: 2.00 m  
AREA: 3.01 m<sup>2</sup> • PERIMETER: 7.39 m



FLOORS: 1

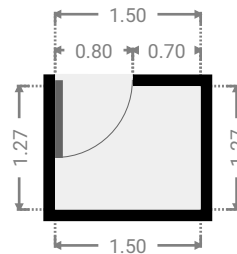
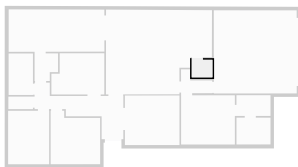
## ▼ Kitchen Ground Floor

WIDTH: 7.68 m • LENGTH: 6.14 m  
AREA: 41.16 m<sup>2</sup> • PERIMETER: 27.57 m



## ▼ Closet Ground Floor

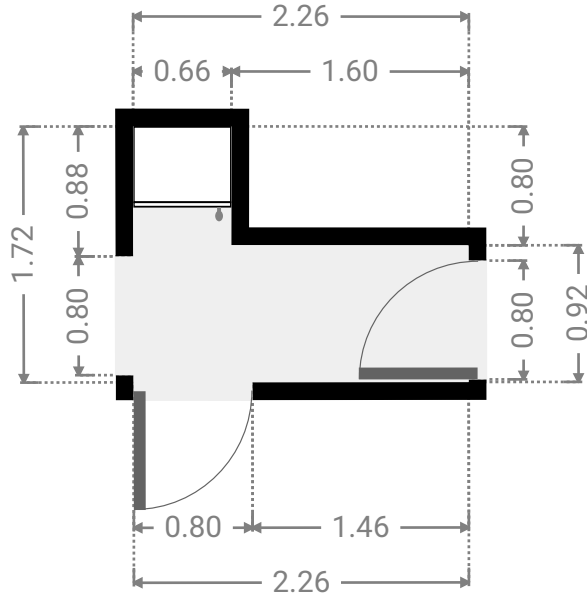
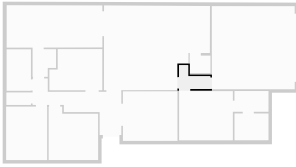
WIDTH: 1.50 m • LENGTH: 1.27 m  
AREA: 1.91 m<sup>2</sup> • PERIMETER: 5.54 m



FLOORS: 1

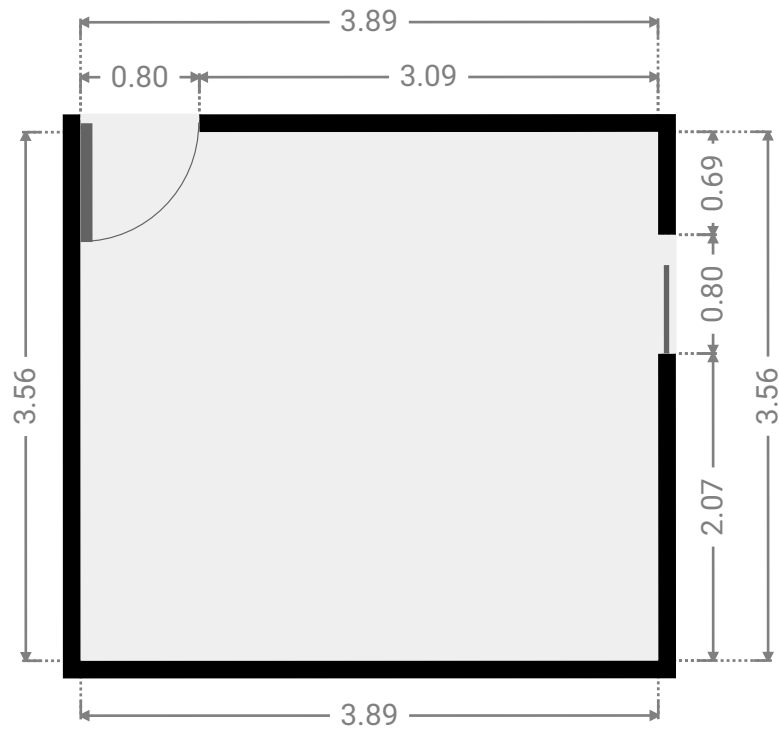
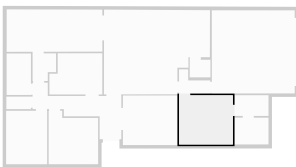
▼ **Hall**  
Ground Floor

WIDTH: 2.26 m • LENGTH: 1.72 m  
AREA: 2.61 m<sup>2</sup> • PERIMETER: 7.96 m



▼ **Master Bedroom**  
Ground Floor

WIDTH: 3.89 m • LENGTH: 3.56 m  
AREA: 13.85 m<sup>2</sup> • PERIMETER: 14.90 m

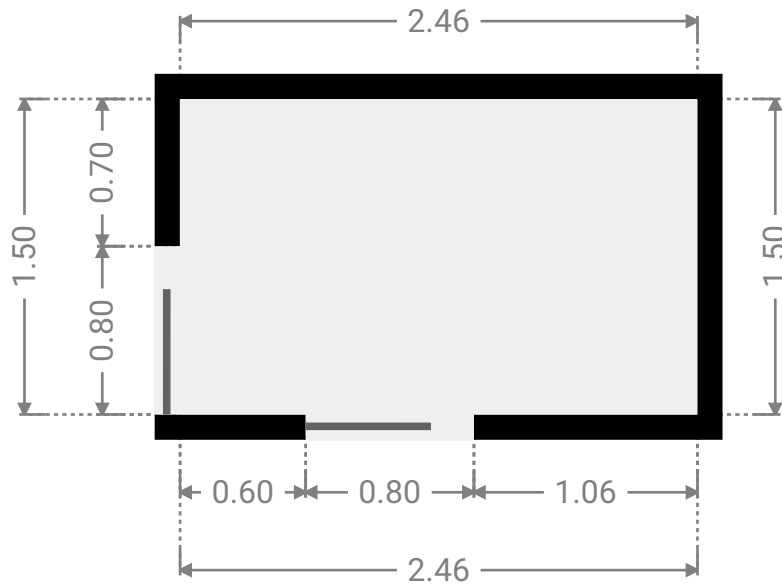
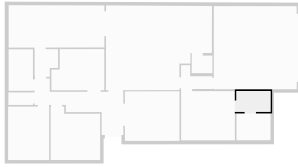




FLOORS: 1

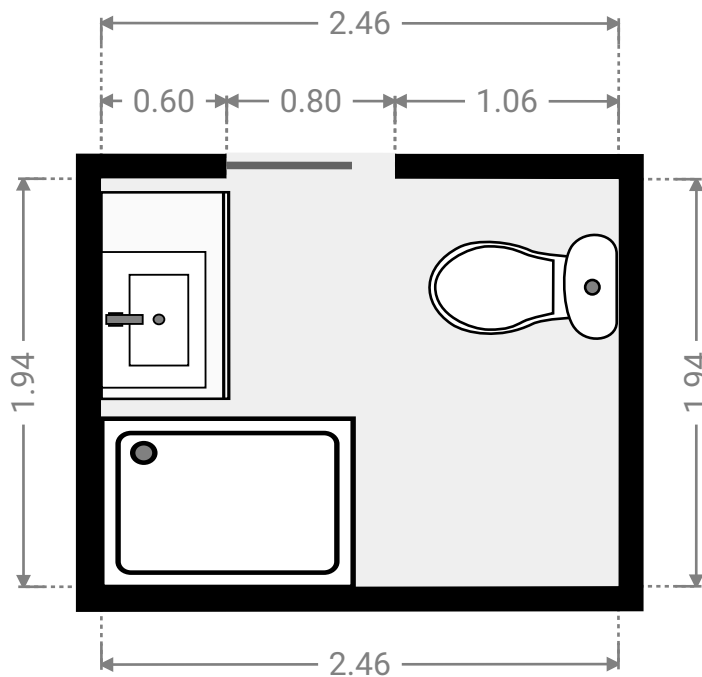
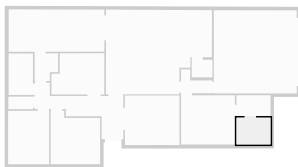
▼ **Closet**  
Ground Floor

WIDTH: 2.46 m • LENGTH: 1.50 m  
AREA: 3.69 m<sup>2</sup> • PERIMETER: 7.92 m



▼ **Bathroom**  
Ground Floor

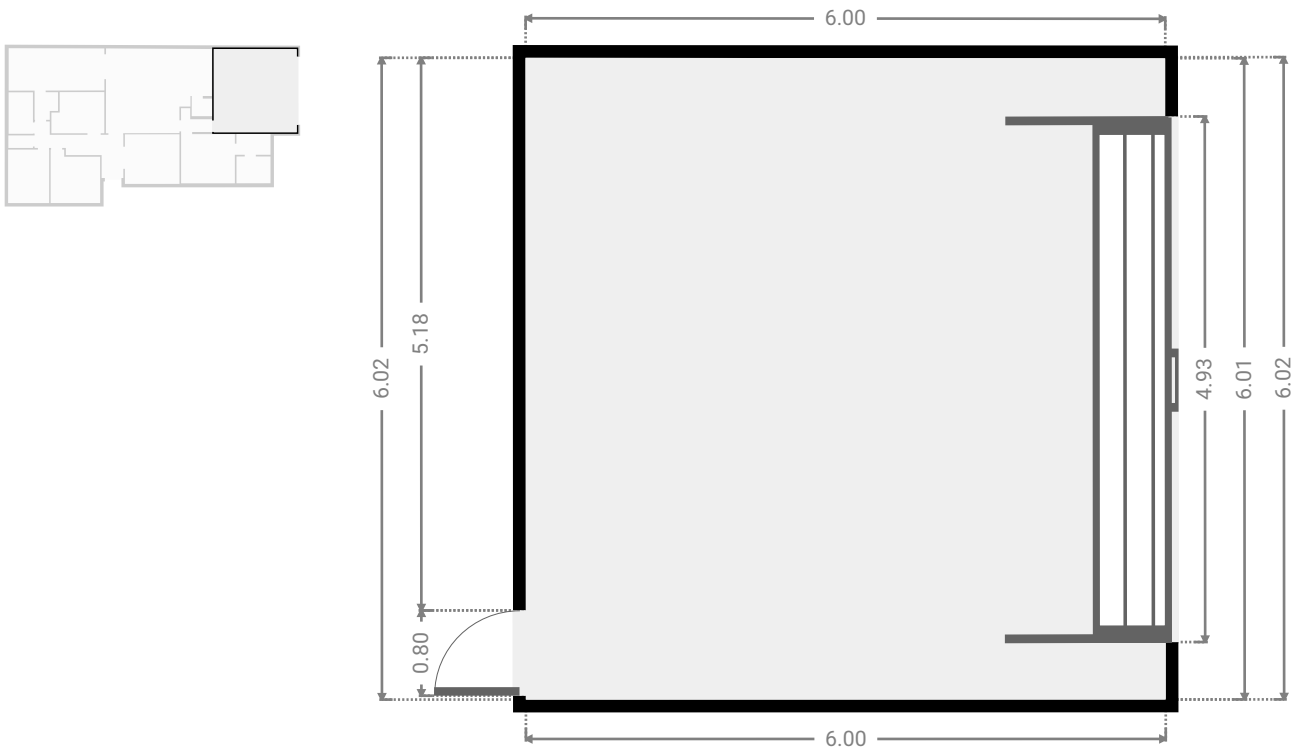
WIDTH: 2.46 m • LENGTH: 1.94 m  
AREA: 4.77 m<sup>2</sup> • PERIMETER: 8.79 m



FLOORS: 1

▼ Garage  
Ground Floor

WIDTH: 6.00 m • LENGTH: 6.02 m  
AREA: 36.08 m<sup>2</sup> • PERIMETER: 24.03 m



▼ Other  
Ground Floor

WIDTH: 6.93 m • LENGTH: 3.07 m  
AREA: 21.15 m<sup>2</sup> • PERIMETER: 19.96 m

