

1/576 Norman Road - Copy 1

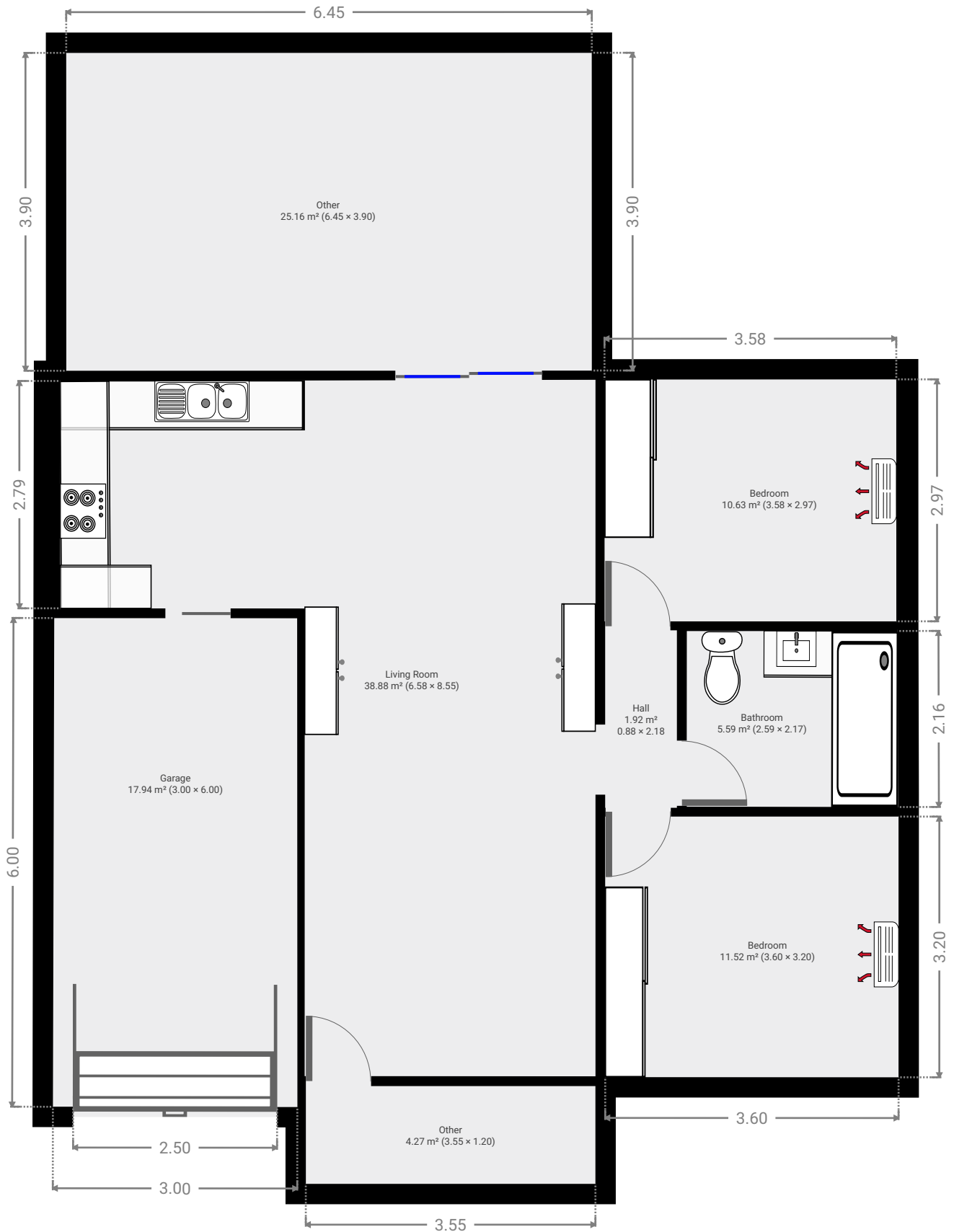
SUBMITTED BY
Ray White Rockhampton Casey
stockers@cqoz.com

CREATED ON
2020-11-05

Floors 1

FLOORS: 1

▼ Ground Floor

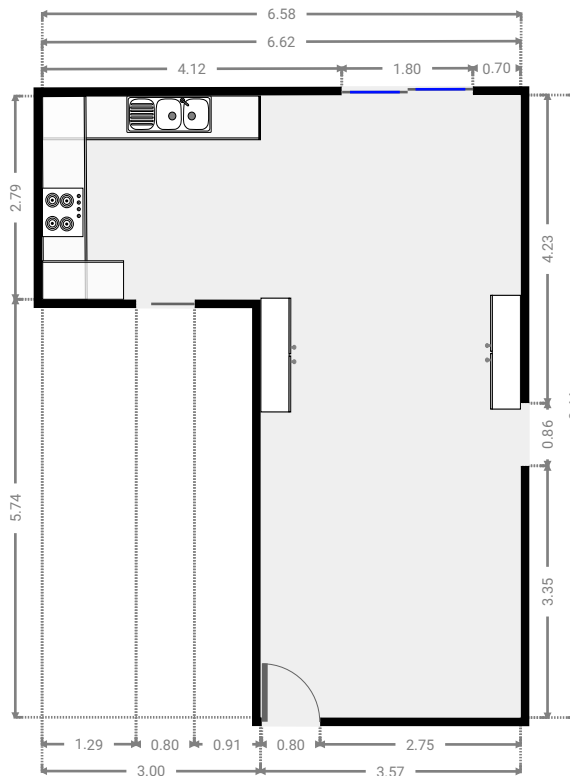
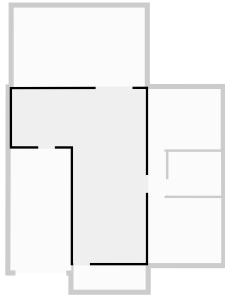


THIS FLOORPLAN IS PROVIDED WITHOUT WARRANTY OF ANY KIND. SENSOPIA DISCLAIMS ANY WARRANTY INCLUDING, WITHOUT LIMITATION, SATISFACTORY QUALITY OR ACCURACY OF DIMENSIONS.

FLOORS: 1

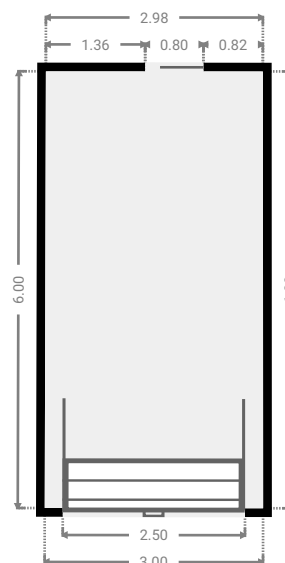
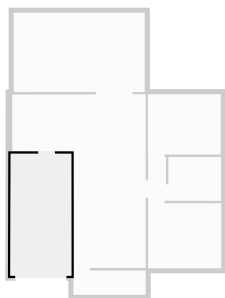
▼ Living Room Ground Floor

WIDTH: 6.58 m • LENGTH: 8.55 m
AREA: 38.88 m² • PERIMETER: 30.22 m



▼ Garage Ground Floor

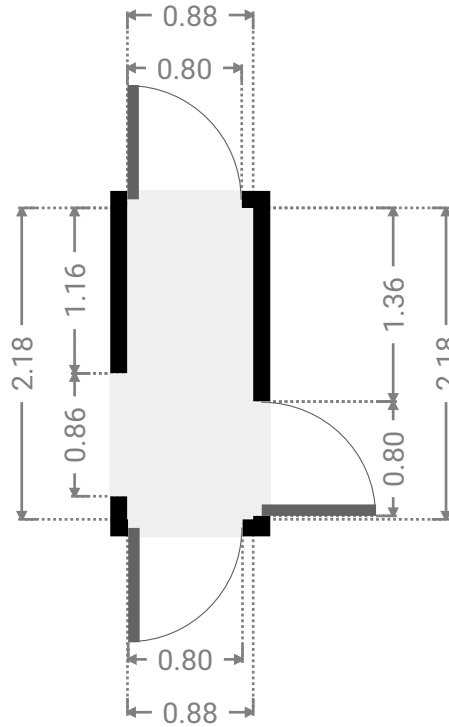
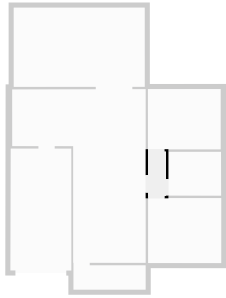
WIDTH: 3.00 m • LENGTH: 6.00 m
AREA: 17.94 m² • PERIMETER: 17.98 m



FLOORS: 1

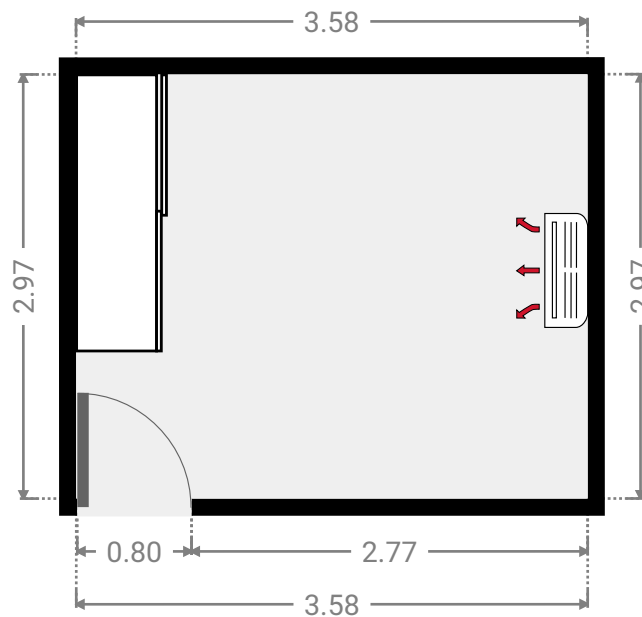
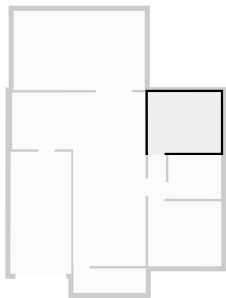
▼ **Hall**
Ground Floor

WIDTH: 0.88 m • LENGTH: 2.18 m
AREA: 1.92 m² • PERIMETER: 6.12 m



▼ **Bedroom**
Ground Floor

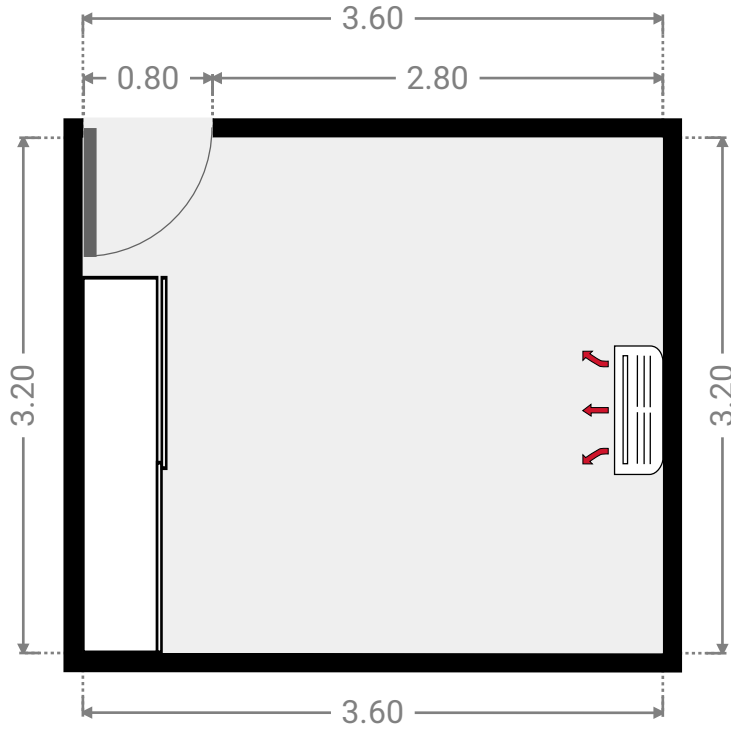
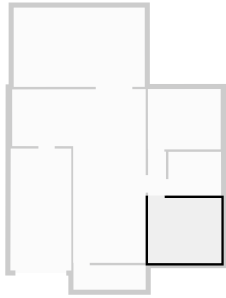
WIDTH: 3.58 m • LENGTH: 2.97 m
AREA: 10.63 m² • PERIMETER: 13.10 m



FLOORS: 1

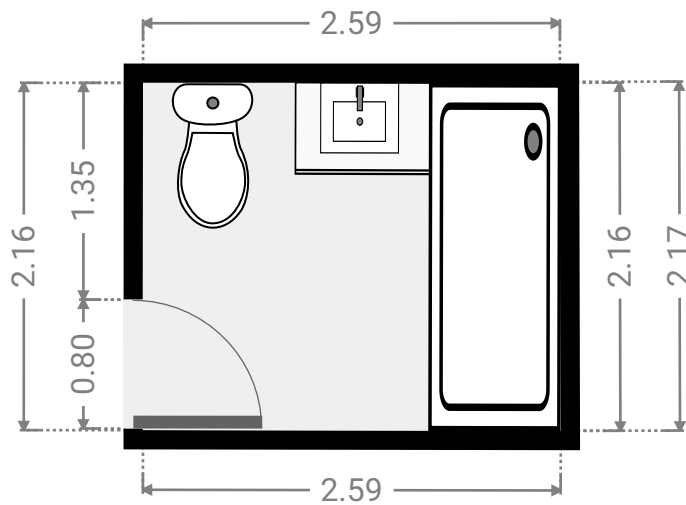
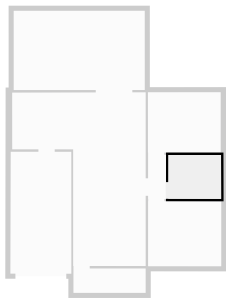
▼ **Bedroom**
Ground Floor

WIDTH: 3.60 m • LENGTH: 3.20 m
AREA: 11.52 m² • PERIMETER: 13.60 m



▼ **Bathroom**
Ground Floor

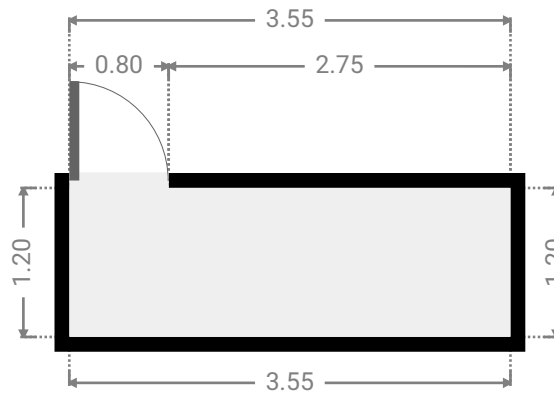
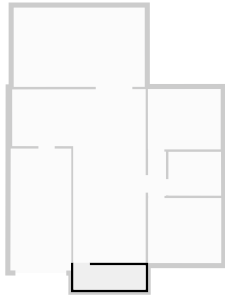
WIDTH: 2.59 m • LENGTH: 2.17 m
AREA: 5.59 m² • PERIMETER: 9.50 m



FLOORS: 1

▼ **Other**
Ground Floor

WIDTH: 3.55 m • LENGTH: 1.20 m
AREA: 4.27 m² • PERIMETER: 9.51 m



▼ **Other**
Ground Floor

WIDTH: 6.45 m • LENGTH: 3.90 m
AREA: 25.16 m² • PERIMETER: 20.70 m

