

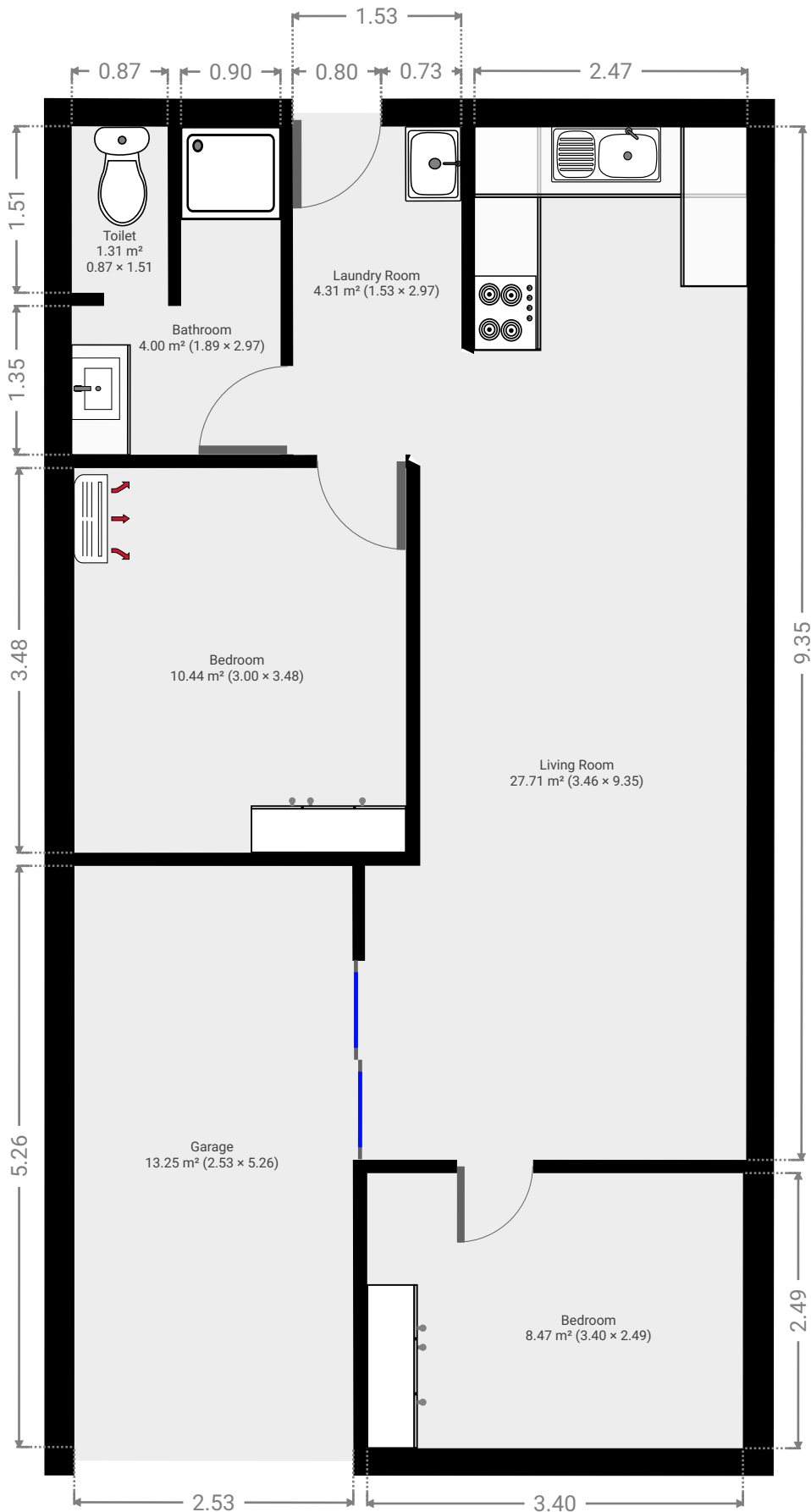
2/345 Sheilds Avenue

Created on
2021-08-05

Floors
1

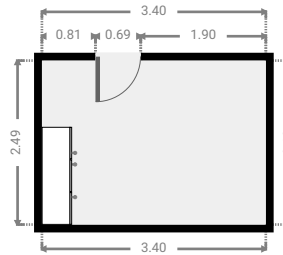
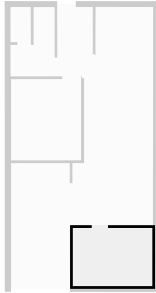


▼ Ground Floor



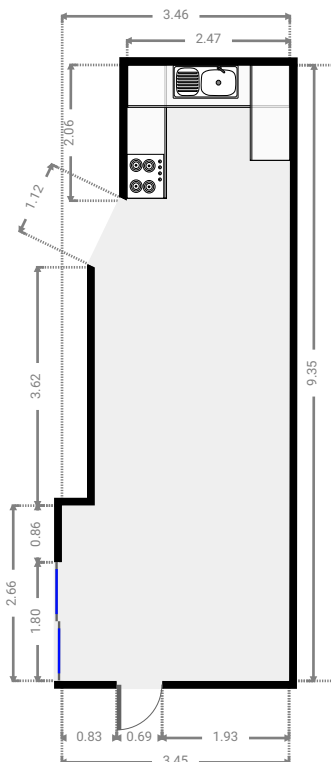
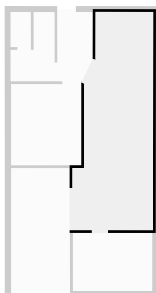
▼ **Bedroom**
Ground Floor

WIDTH: 3.40 m • LENGTH: 2.49 m
AREA: 8.47 m² • PERIMETER: 11.78 m



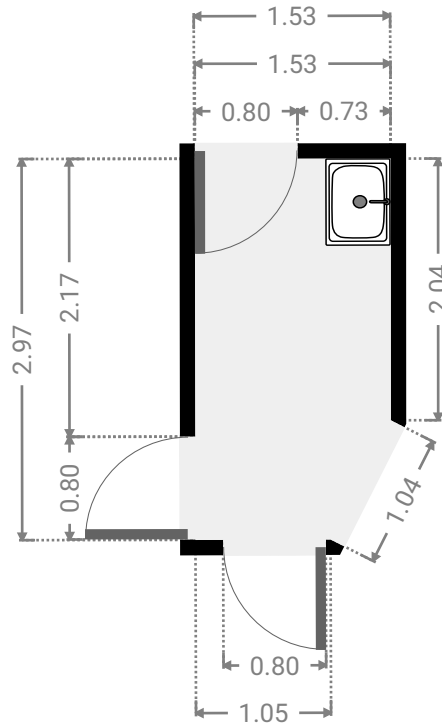
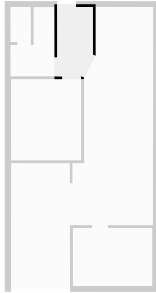
▼ **Living Room**
Ground Floor

WIDTH: 3.46 m • LENGTH: 9.35 m
AREA: 27.71 m² • PERIMETER: 25.23 m



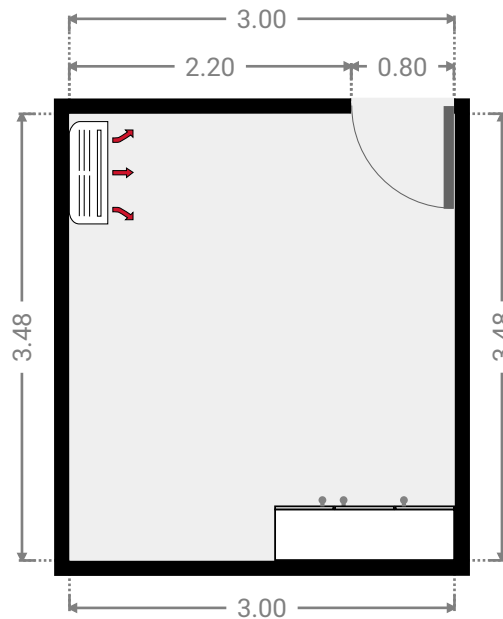
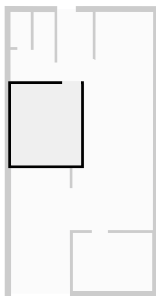
▼ **Laundry Room**
Ground Floor

WIDTH: 1.53 m • LENGTH: 2.97 m
AREA: 4.31 m² • PERIMETER: 8.63 m



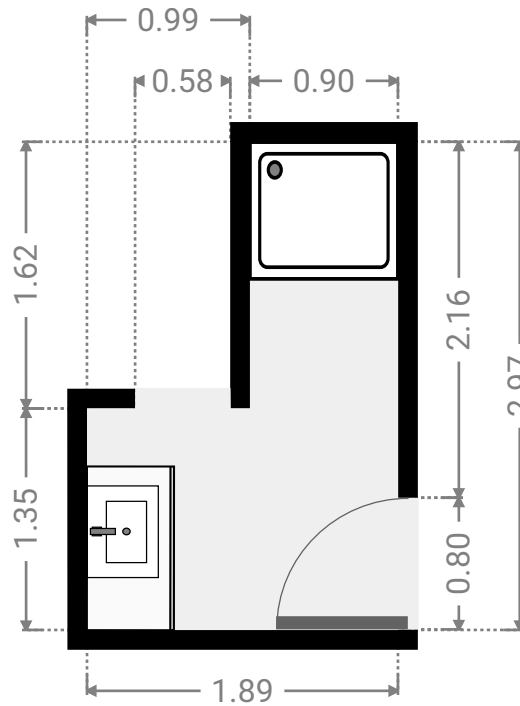
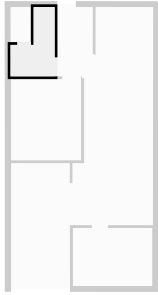
▼ **Bedroom**
Ground Floor

WIDTH: 3.00 m • LENGTH: 3.48 m
AREA: 10.44 m² • PERIMETER: 12.96 m



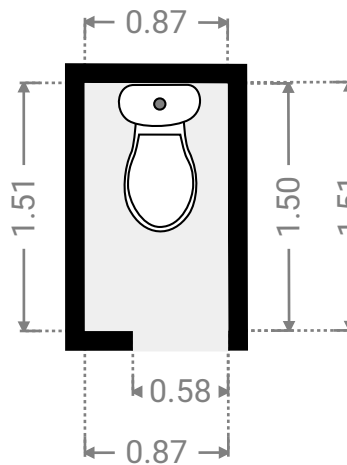
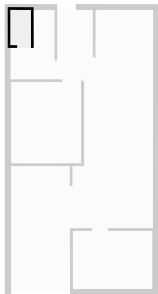
▼ **Bathroom**
Ground Floor

WIDTH: 1.89 m • LENGTH: 2.97 m
AREA: 4.00 m² • PERIMETER: 9.71 m



▼ **Toilet**
Ground Floor

WIDTH: 0.87 m • LENGTH: 1.51 m
AREA: 1.31 m² • PERIMETER: 4.75 m



▼ **Garage**
Ground Floor

WIDTH: 2.53 m • LENGTH: 5.26 m
AREA: 13.25 m² • PERIMETER: 15.56 m

