

2/32 Chalmers Street

SUBMITTED BY

Ray White Rockhampton Casey
stockers@cqoz.com

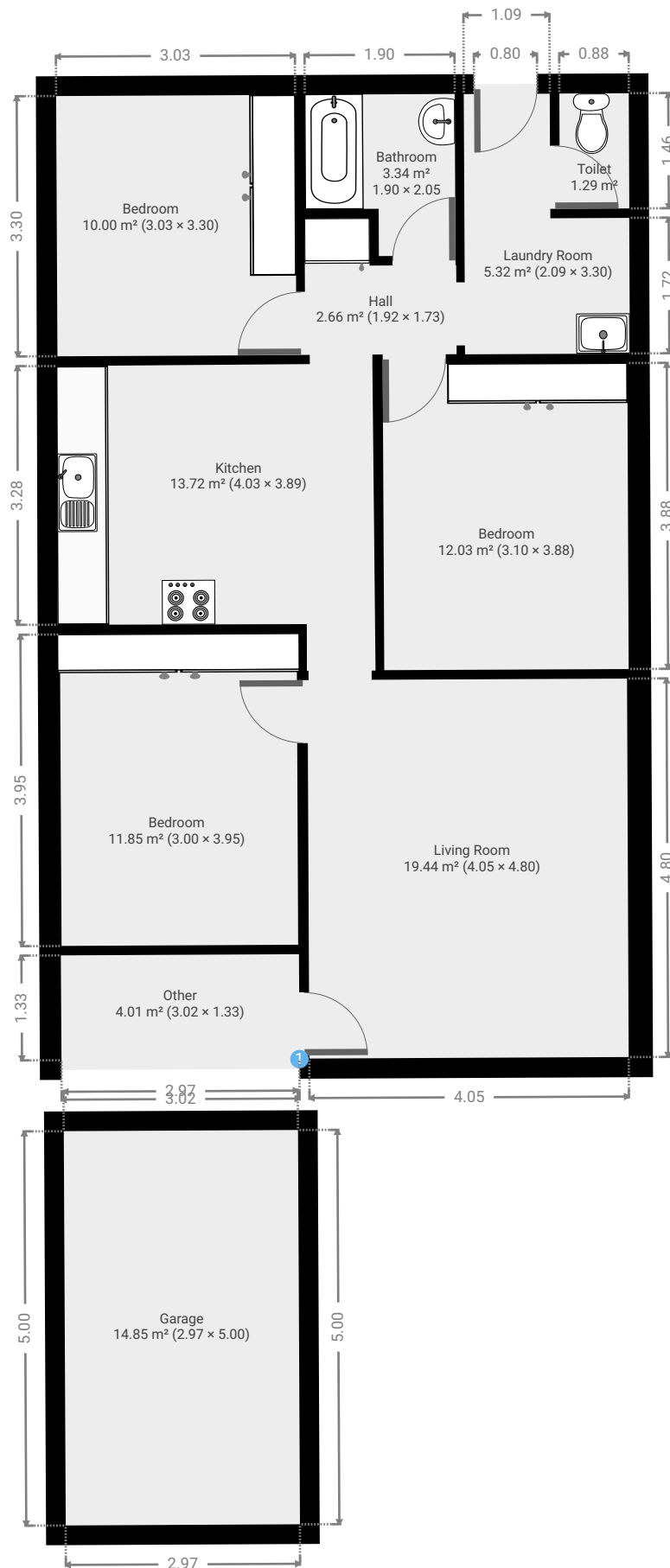
CREATED ON

2021-12-13

Floors

1

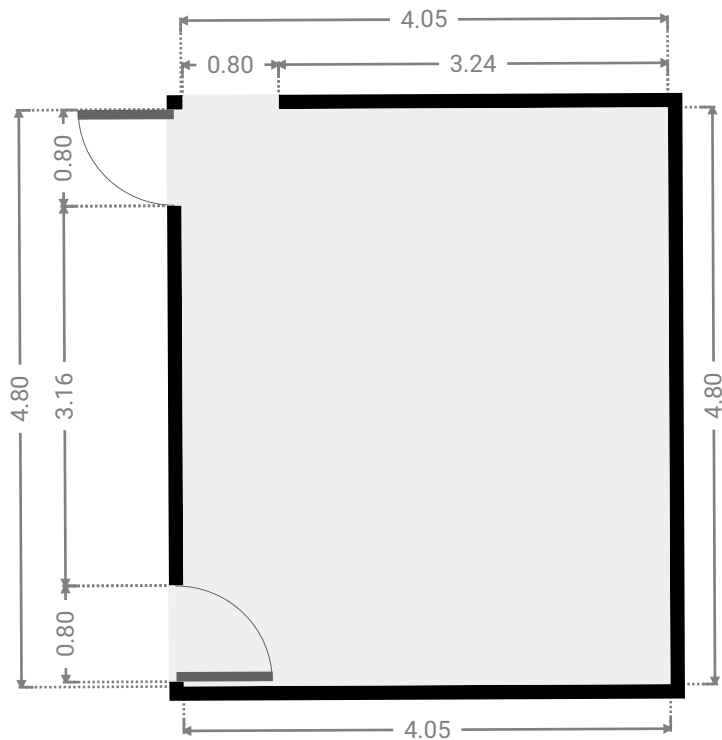
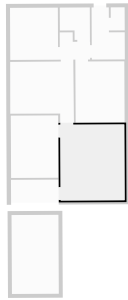
▼ Ground Floor



FLOORS: 1

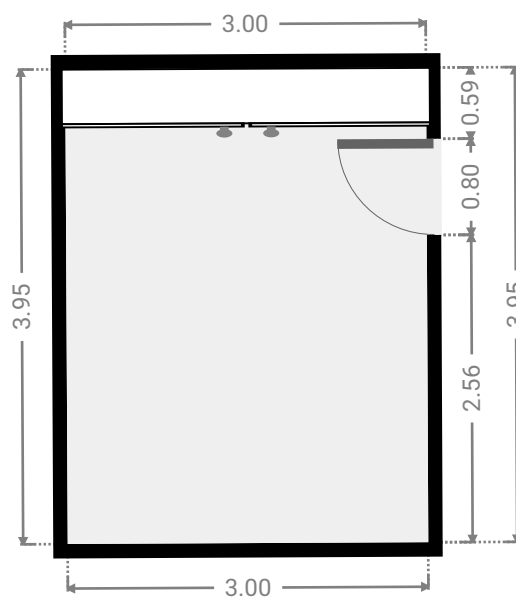
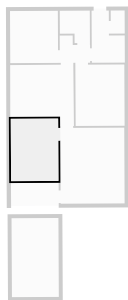
▼ **Living Room**
Ground Floor

WIDTH: 4.05 m • LENGTH: 4.80 m
AREA: 19.44 m² • PERIMETER: 17.70 m



▼ **Bedroom**
Ground Floor

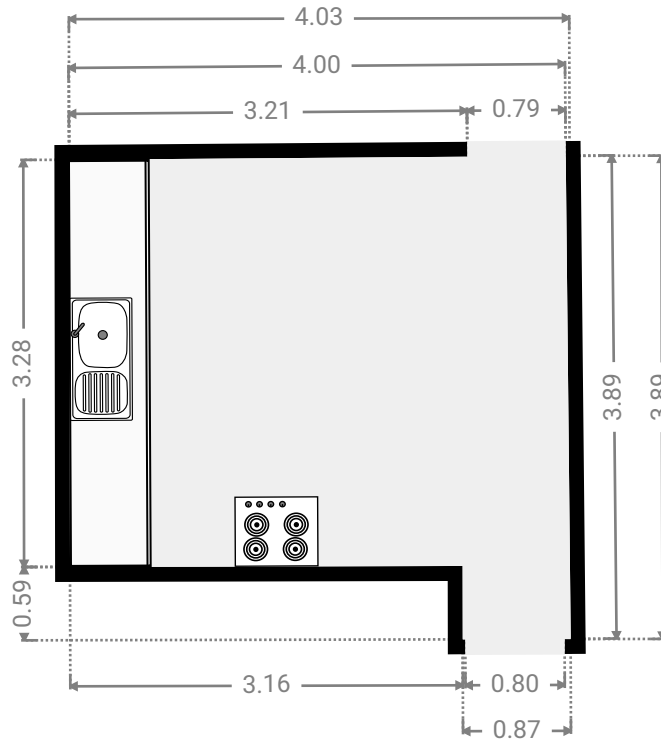
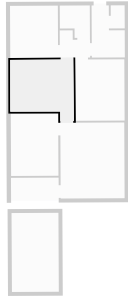
WIDTH: 3.00 m • LENGTH: 3.95 m
AREA: 11.85 m² • PERIMETER: 13.90 m



FLOORS: 1

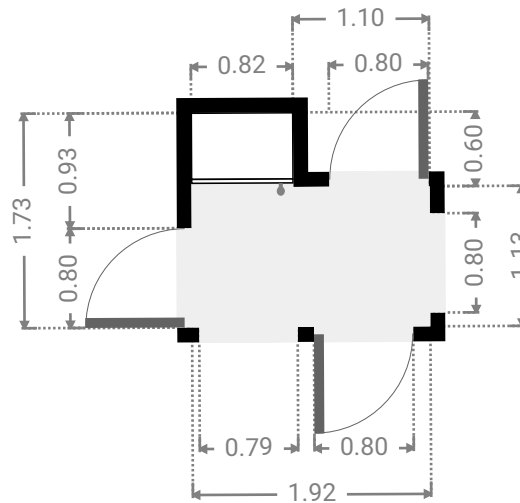
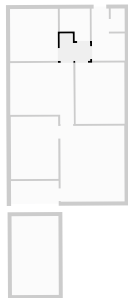
▼ **Kitchen**
Ground Floor

WIDTH: 4.03 m • LENGTH: 3.89 m
AREA: 13.72 m² • PERIMETER: 15.80 m



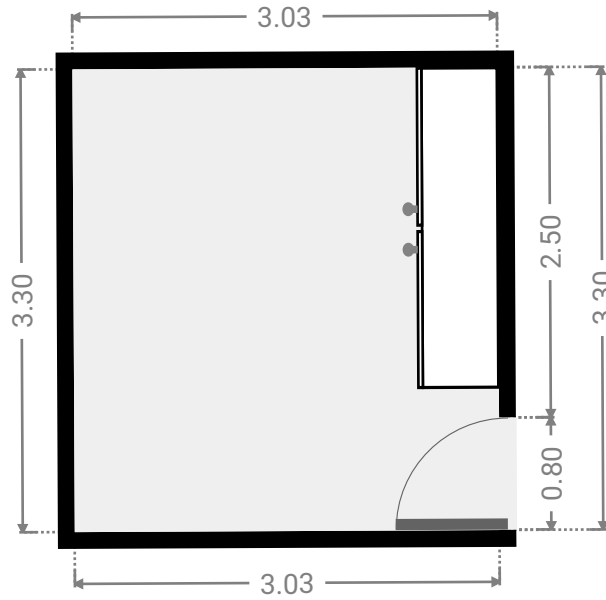
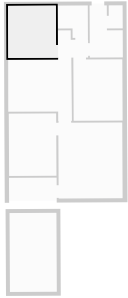
▼ **Hall**
Ground Floor

WIDTH: 1.92 m • LENGTH: 1.73 m
AREA: 2.66 m² • PERIMETER: 7.30 m



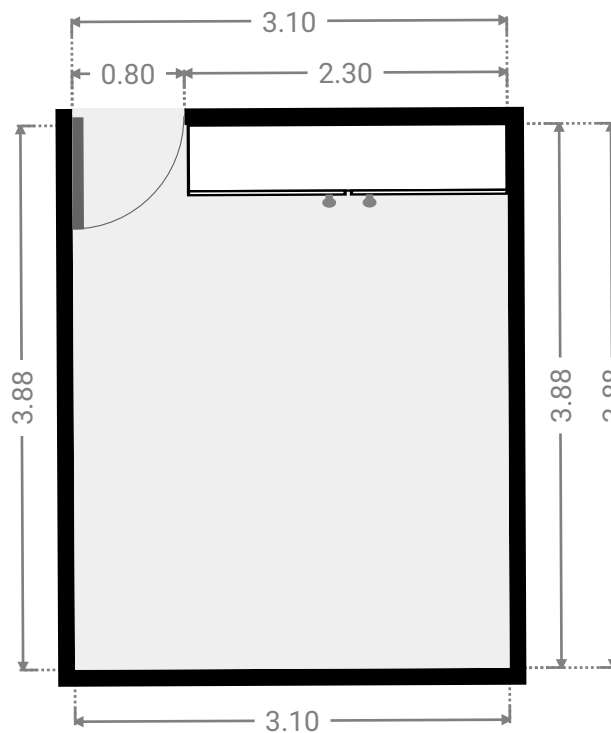
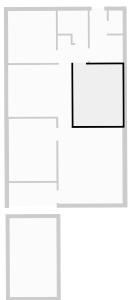
▼ **Bedroom**
Ground Floor

WIDTH: 3.03 m • LENGTH: 3.30 m
AREA: 10.00 m² • PERIMETER: 12.66 m



▼ **Bedroom**
Ground Floor

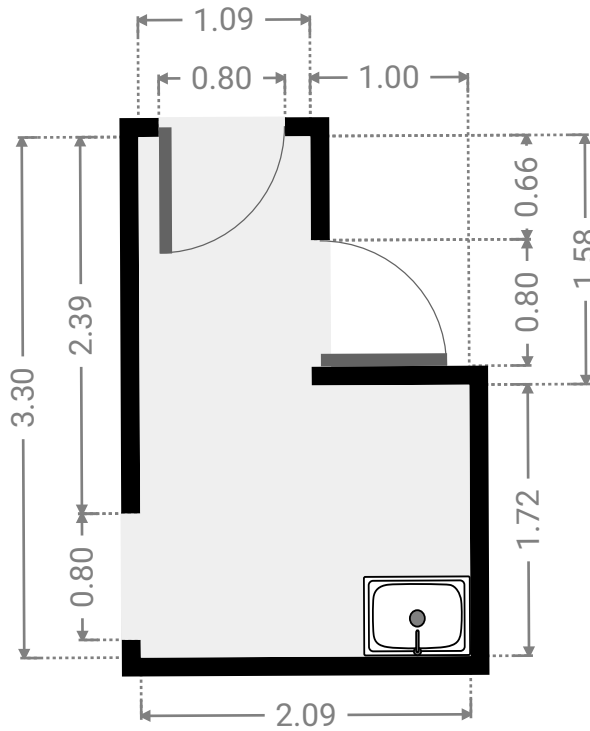
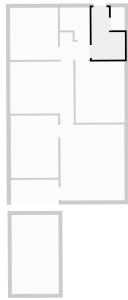
WIDTH: 3.10 m • LENGTH: 3.88 m
AREA: 12.03 m² • PERIMETER: 13.96 m



FLOORS: 1

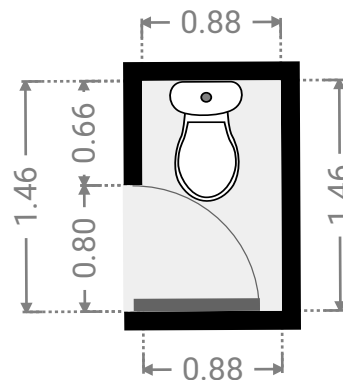
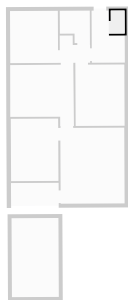
▼ Laundry Room
Ground Floor

WIDTH: 2.09 m • LENGTH: 3.30 m
AREA: 5.32 m² • PERIMETER: 10.78 m



▼ Toilet
Ground Floor

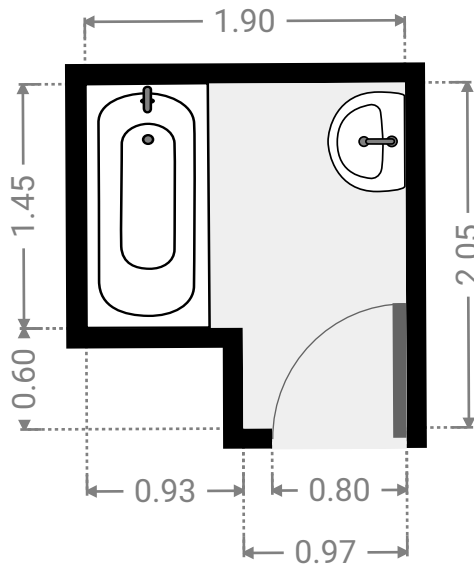
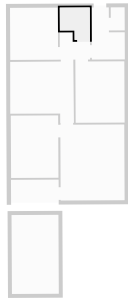
WIDTH: 0.88 m • LENGTH: 1.46 m
AREA: 1.29 m² • PERIMETER: 4.68 m



FLOORS: 1

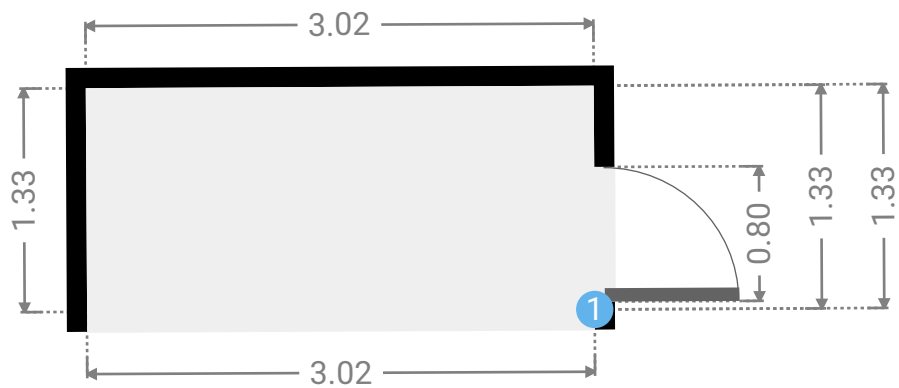
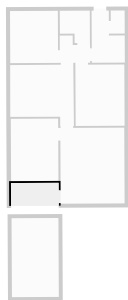
▼ Bathroom
Ground Floor

WIDTH: 1.90 m • LENGTH: 2.05 m
AREA: 3.34 m² • PERIMETER: 7.90 m



▼ Other
Ground Floor

WIDTH: 3.02 m • LENGTH: 1.33 m
AREA: 4.01 m² • PERIMETER: 8.70 m



▼ Other/Ground Floor

1 OPENING

Height
0.00 m



FLOORS: 1

▼ **Garage**
Ground Floor

WIDTH: 2.97 m • LENGTH: 5.00 m
AREA: 14.85 m² • PERIMETER: 15.94 m

