

2/29 Church Street

SUBMITTED BY

Ray White Rockhampton Casey
stockers@cqoz.com

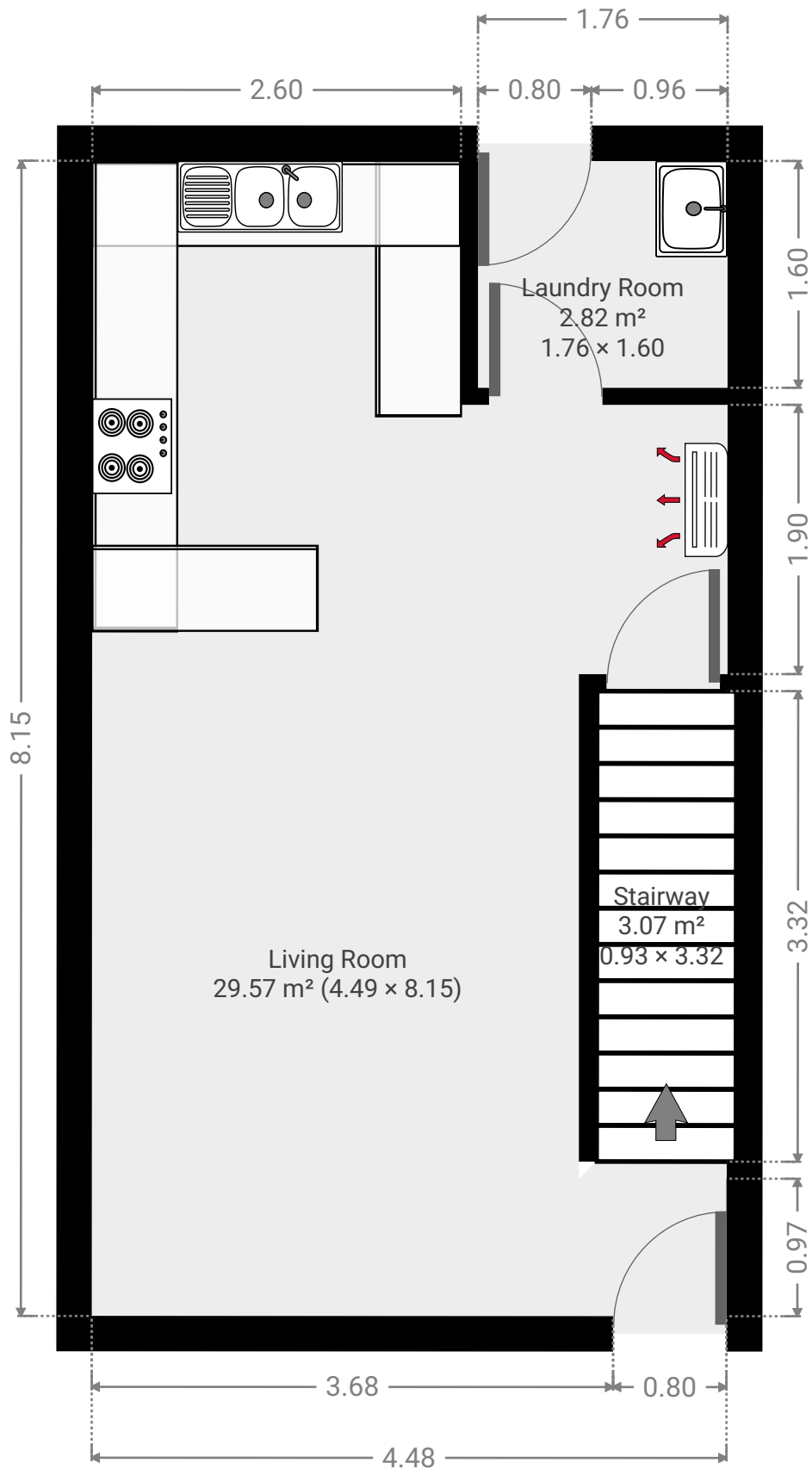
CREATED ON

2020-04-23

Floors

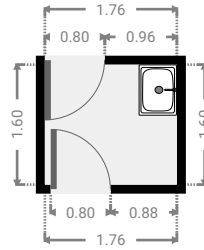
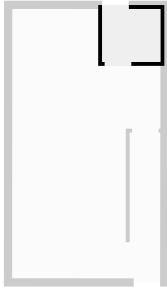
2

▼ Ground Floor



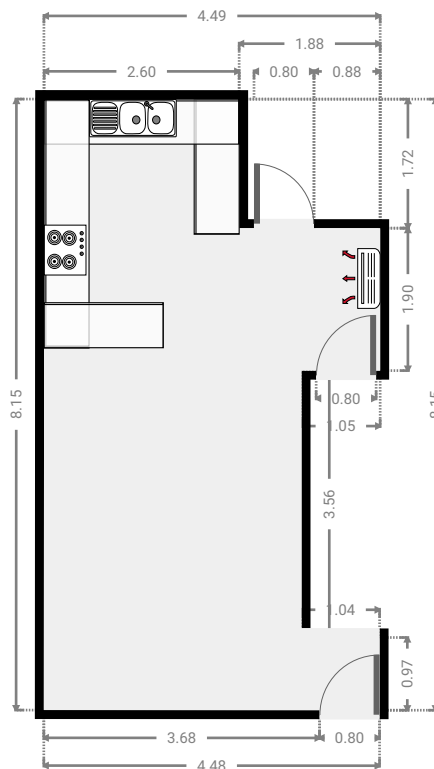
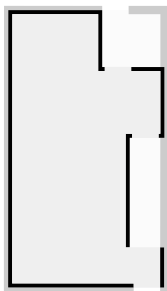
▼ **Laundry Room**
Ground Floor

WIDTH: 1.76 m • LENGTH: 1.60 m
AREA: 2.82 m² • PERIMETER: 6.72 m



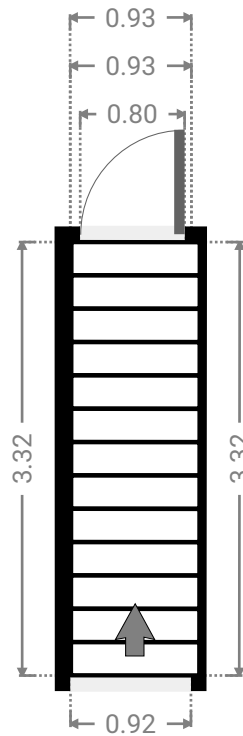
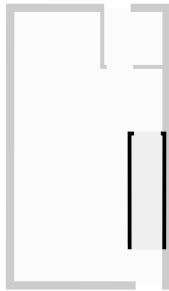
▼ **Living Room**
Ground Floor

WIDTH: 4.49 m • LENGTH: 8.15 m
AREA: 29.57 m² • PERIMETER: 27.35 m

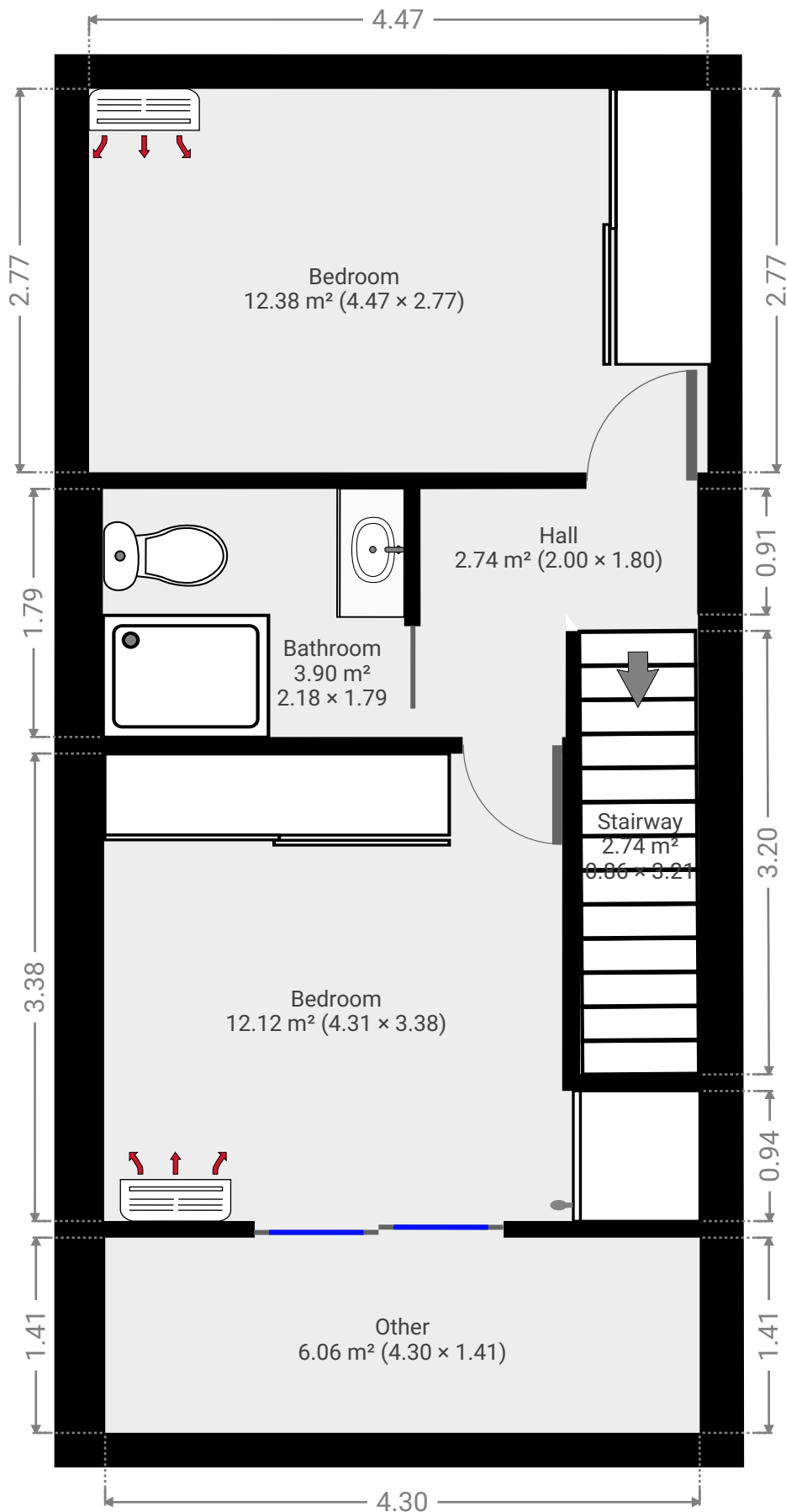


▼ **Stairway**
Ground Floor

WIDTH: 0.93 m • LENGTH: 3.32 m
AREA: 3.07 m² • PERIMETER: 8.49 m

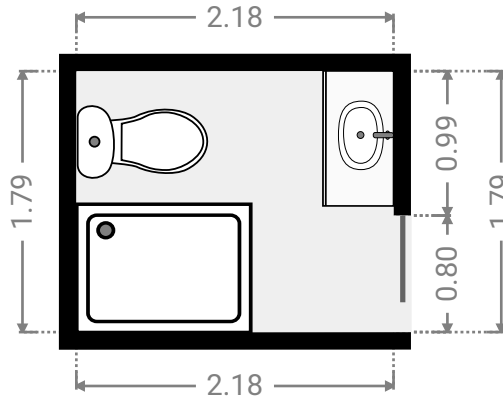
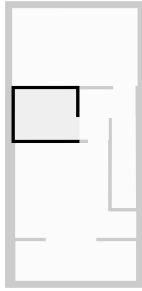


▼ 1st Floor



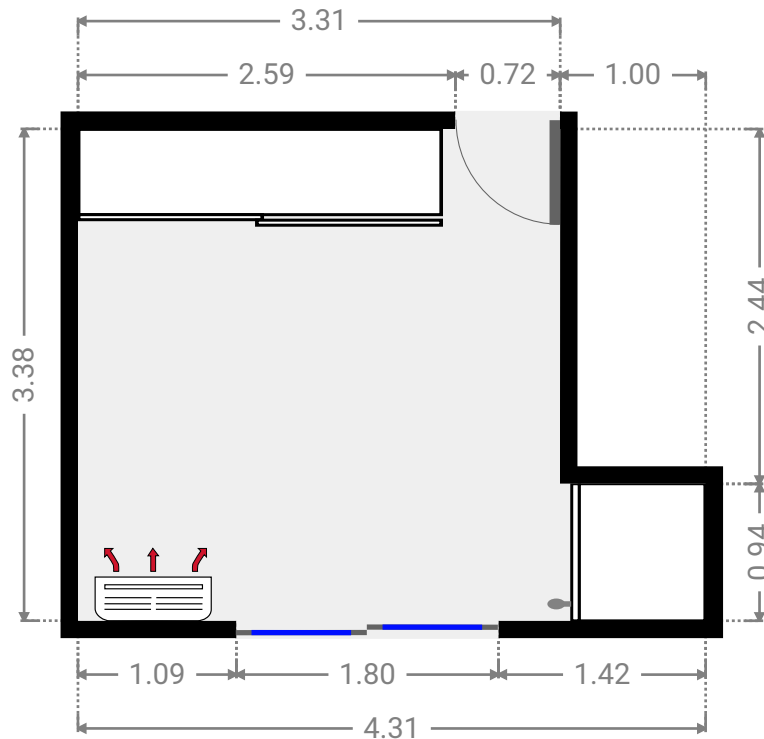
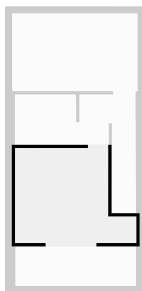
▼ **Bathroom**
1st Floor

WIDTH: 2.18 m • LENGTH: 1.79 m
AREA: 3.90 m² • PERIMETER: 7.94 m



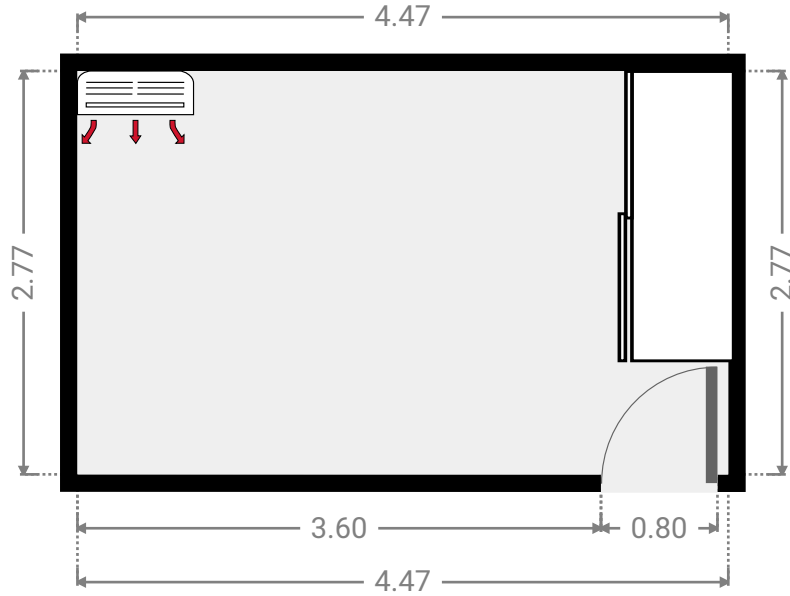
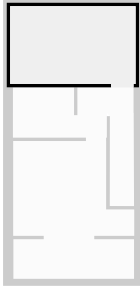
▼ **Bedroom**
1st Floor

WIDTH: 4.31 m • LENGTH: 3.38 m
AREA: 12.12 m² • PERIMETER: 15.38 m



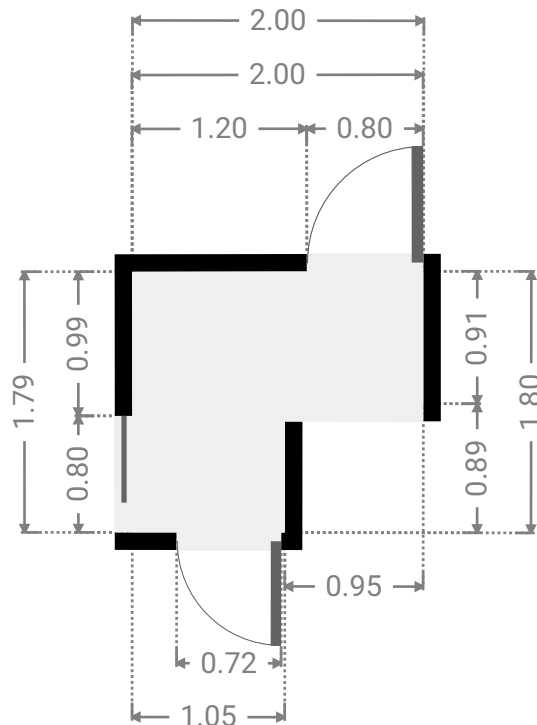
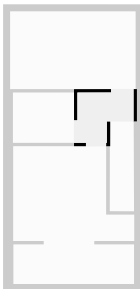
▼ **Bedroom**
1st Floor

WIDTH: 4.47 m • LENGTH: 2.77 m
AREA: 12.38 m² • PERIMETER: 14.48 m



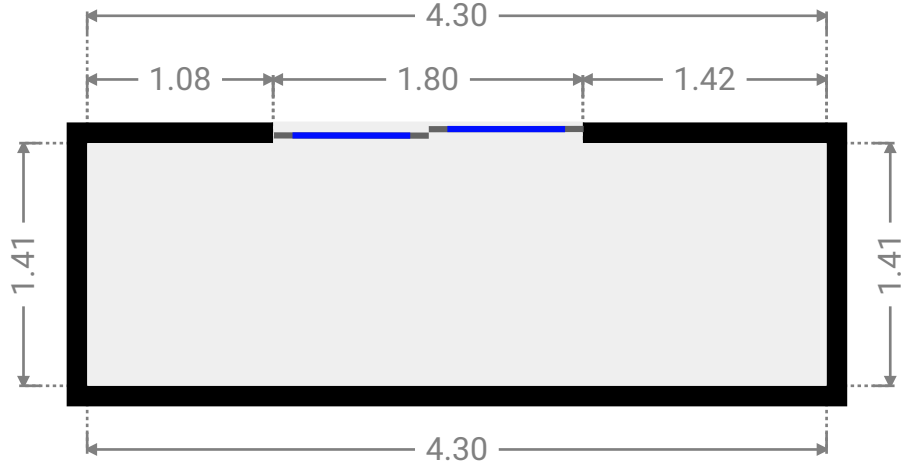
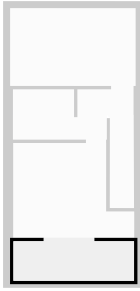
▼ **Hall**
1st Floor

WIDTH: 2.00 m • LENGTH: 1.80 m
AREA: 2.74 m² • PERIMETER: 7.58 m



▼ **Other**
1st Floor

WIDTH: 4.30 m • LENGTH: 1.41 m
AREA: 6.06 m² • PERIMETER: 11.41 m



▼ **Stairway**
1st Floor

WIDTH: 0.86 m • LENGTH: 3.21 m
AREA: 2.74 m² • PERIMETER: 8.12 m

