

2/21 John Oxley Drive

SUBMITTED BY

Ray White Rockhampton Casey
stockers@cqoz.com

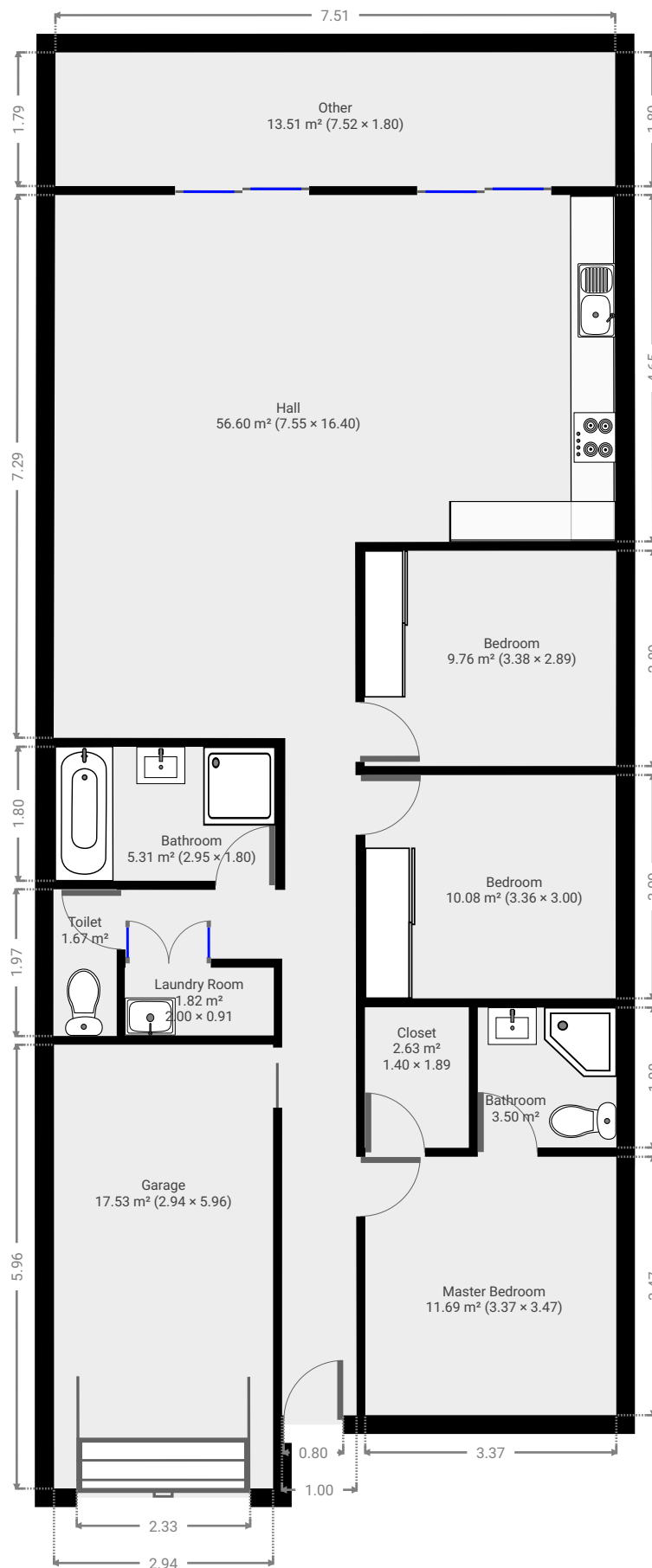
CREATED ON

2021-12-08

Floors

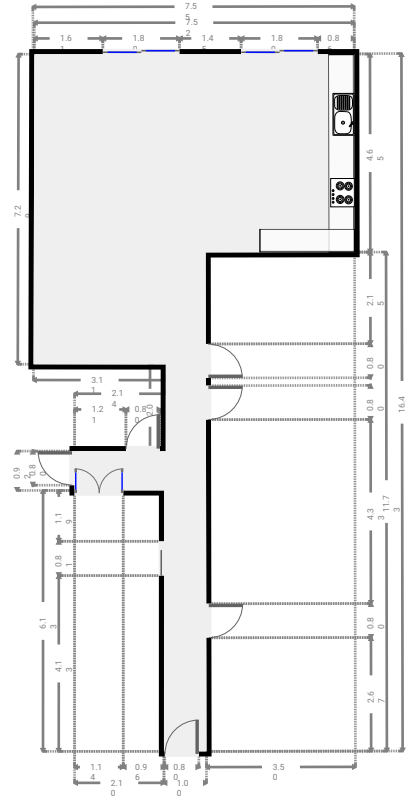
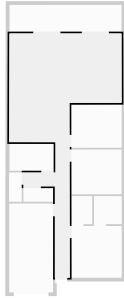
1

▼ Ground Floor



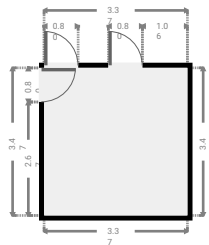
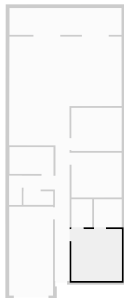
▼ Hall
Ground Floor

WIDTH: 7.55 m • LENGTH: 16.40 m
AREA: 56.60 m² • PERIMETER: 52.15 m



▼ Master Bedroom
Ground Floor

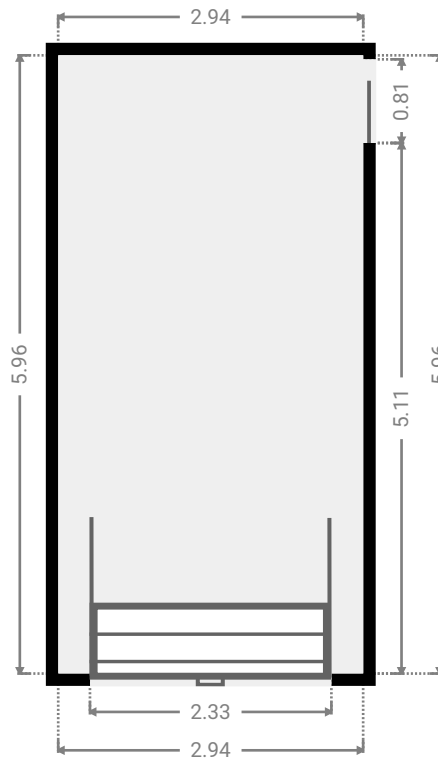
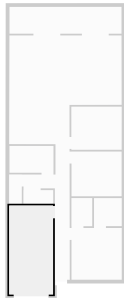
WIDTH: 3.37 m • LENGTH: 3.47 m
AREA: 11.69 m² • PERIMETER: 13.68 m



FLOORS: 1

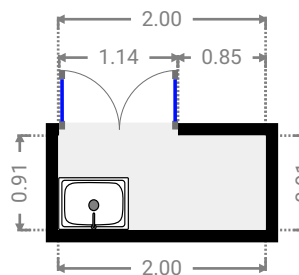
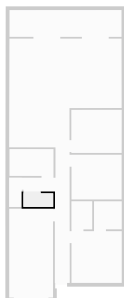
▼ **Garage**
Ground Floor

WIDTH: 2.94 m • LENGTH: 5.96 m
AREA: 17.53 m² • PERIMETER: 17.80 m



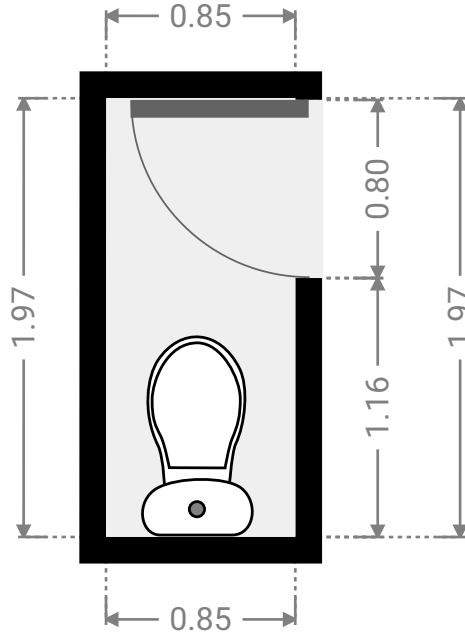
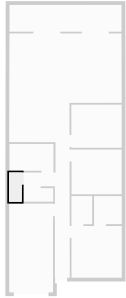
▼ **Laundry Room**
Ground Floor

WIDTH: 2.00 m • LENGTH: 0.91 m
AREA: 1.82 m² • PERIMETER: 5.82 m



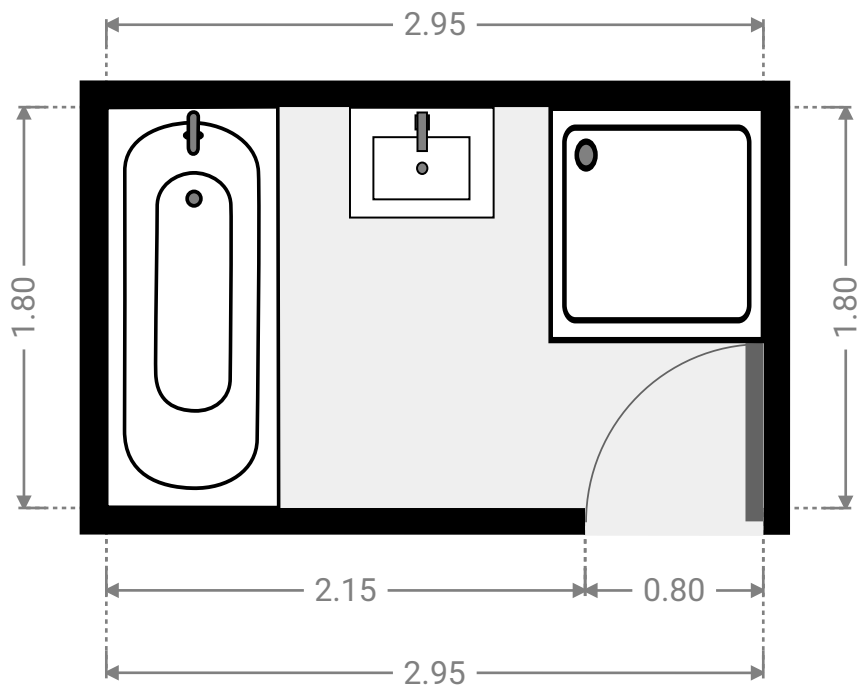
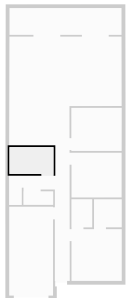
▼ **Toilet**
Ground Floor

WIDTH: 0.85 m • LENGTH: 1.97 m
AREA: 1.67 m² • PERIMETER: 5.64 m



▼ **Bathroom**
Ground Floor

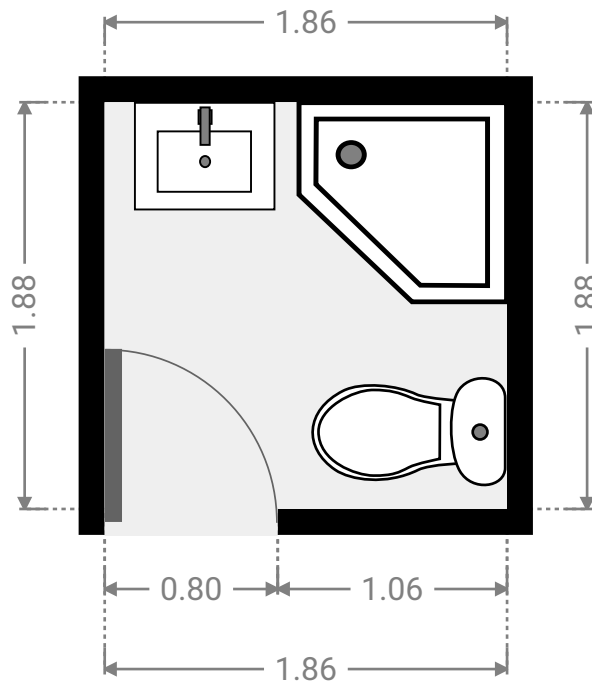
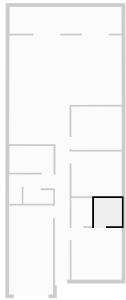
WIDTH: 2.95 m • LENGTH: 1.80 m
AREA: 5.31 m² • PERIMETER: 9.50 m



FLOORS: 1

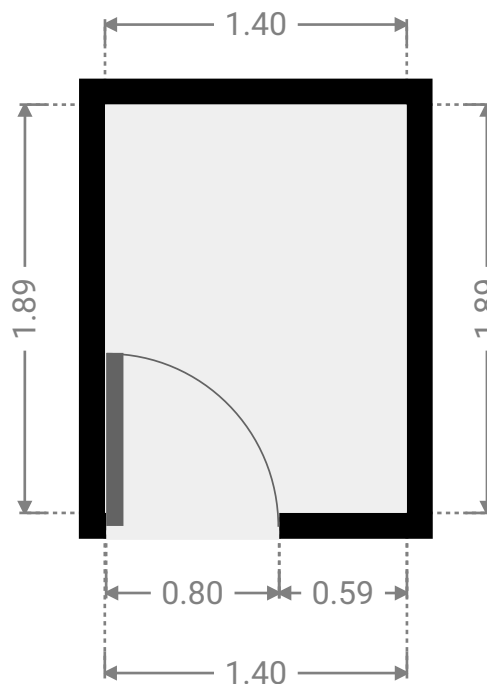
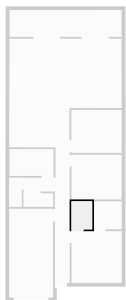
▼ **Bathroom**
Ground Floor

WIDTH: 1.86 m • LENGTH: 1.88 m
AREA: 3.50 m² • PERIMETER: 7.48 m



▼ **Closet**
Ground Floor

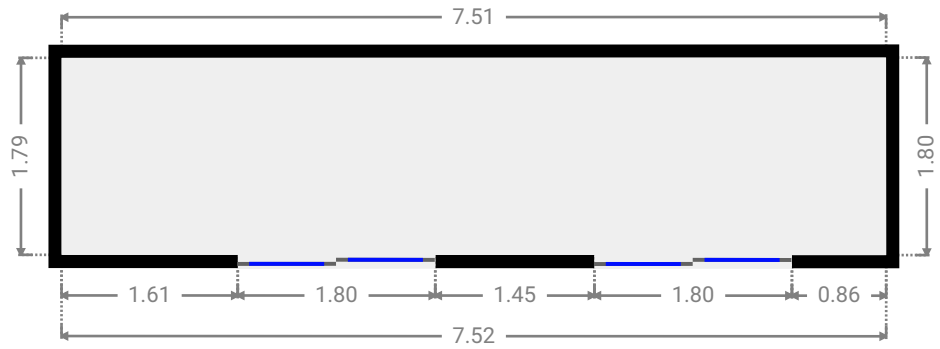
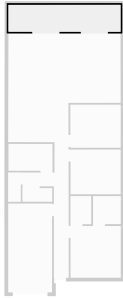
WIDTH: 1.40 m • LENGTH: 1.89 m
AREA: 2.63 m² • PERIMETER: 6.57 m



FLOORS: 1

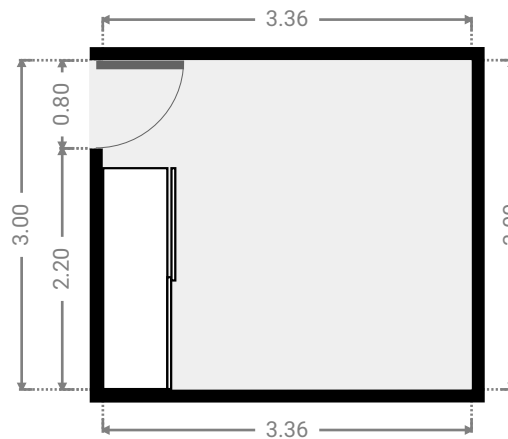
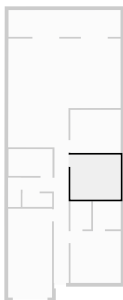
▼ **Other**
Ground Floor

WIDTH: 7.52 m • LENGTH: 1.80 m
AREA: 13.51 m² • PERIMETER: 18.62 m



▼ **Bedroom**
Ground Floor

WIDTH: 3.36 m • LENGTH: 3.00 m
AREA: 10.08 m² • PERIMETER: 12.72 m



▼ **Bedroom**
Ground Floor

WIDTH: 3.38 m • LENGTH: 2.89 m
AREA: 9.76 m² • PERIMETER: 12.54 m

