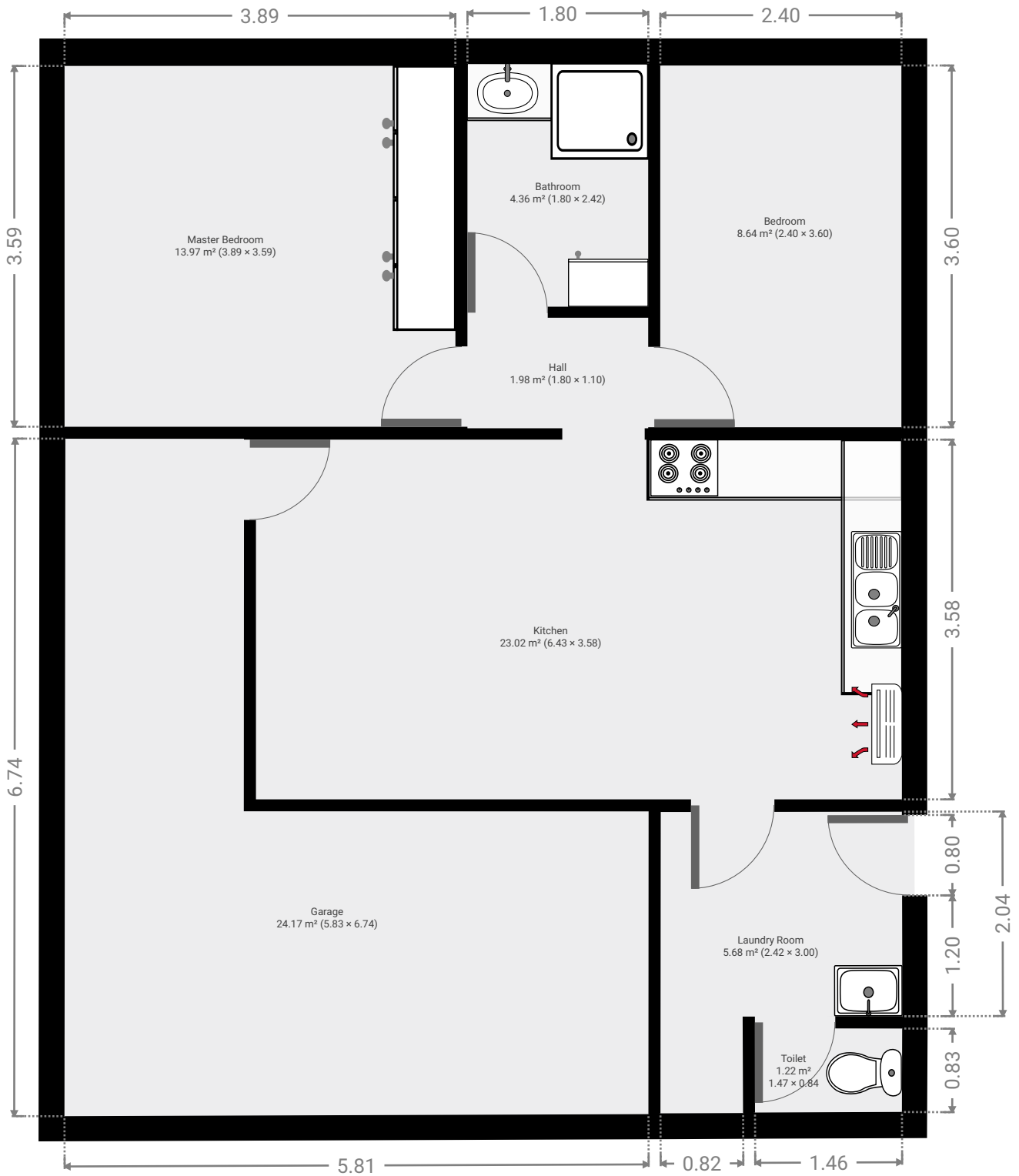


2/14 Locke Street

Created on
2021-05-18

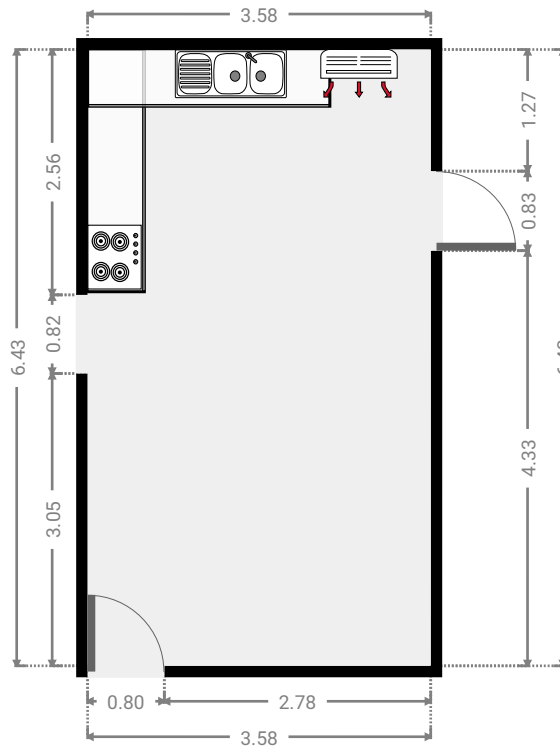
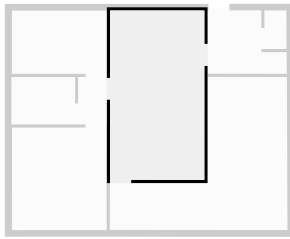
Floors
1

▼ Ground Floor



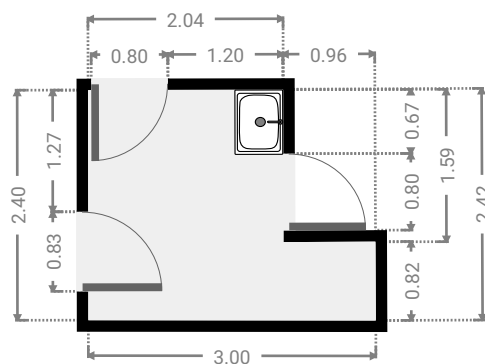
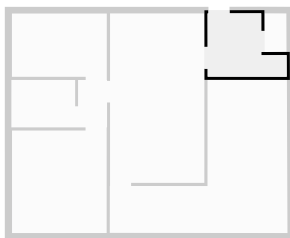
▼ **Kitchen**
Ground Floor

WIDTH: 3.58 m • LENGTH: 6.43 m
AREA: 23.02 m² • PERIMETER: 20.02 m



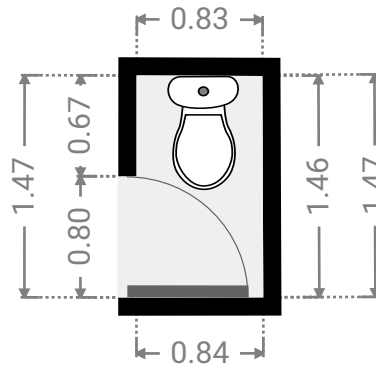
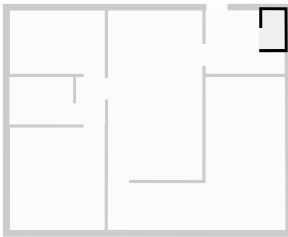
▼ **Laundry Room**
Ground Floor

WIDTH: 3.00 m • LENGTH: 2.42 m
AREA: 5.68 m² • PERIMETER: 10.81 m



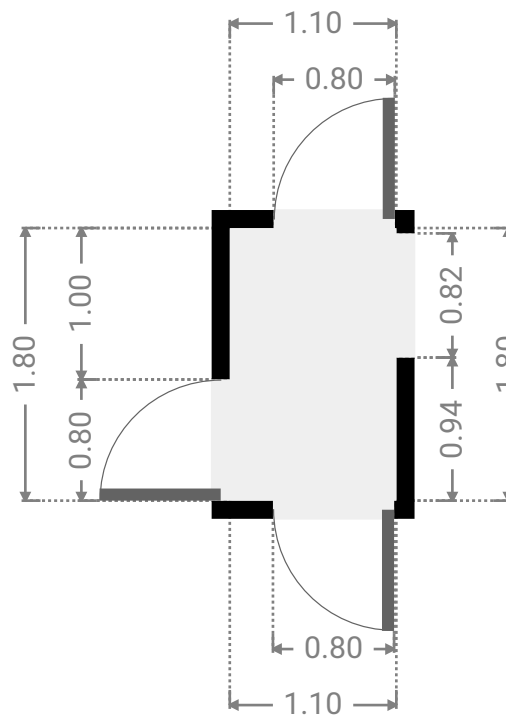
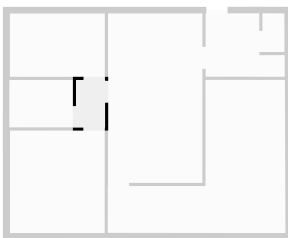
▼ **Toilet**
Ground Floor

WIDTH: 0.84 m • LENGTH: 1.47 m
AREA: 1.22 m² • PERIMETER: 4.60 m



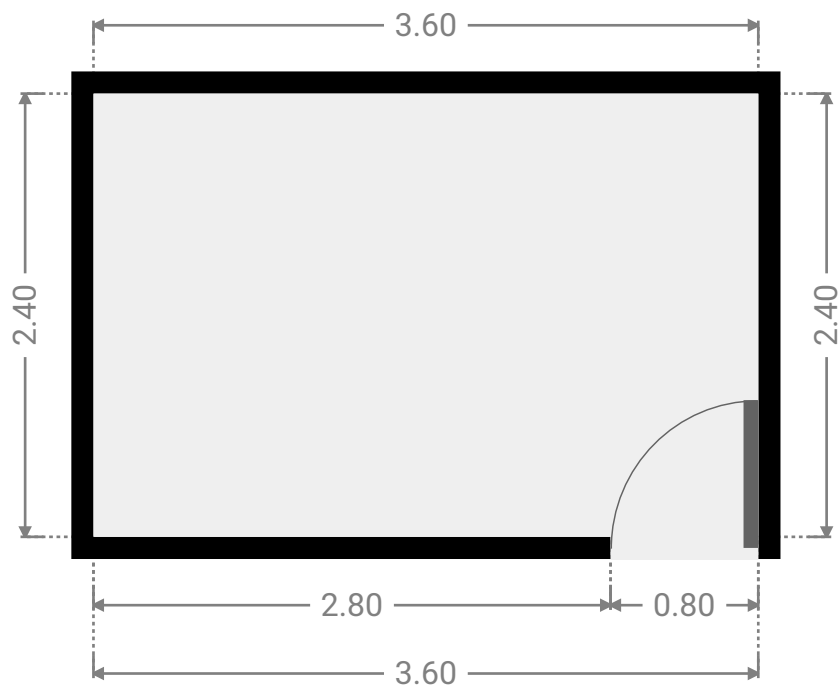
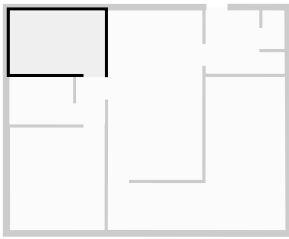
▼ **Hall**
Ground Floor

WIDTH: 1.10 m • LENGTH: 1.80 m
AREA: 1.98 m² • PERIMETER: 5.80 m



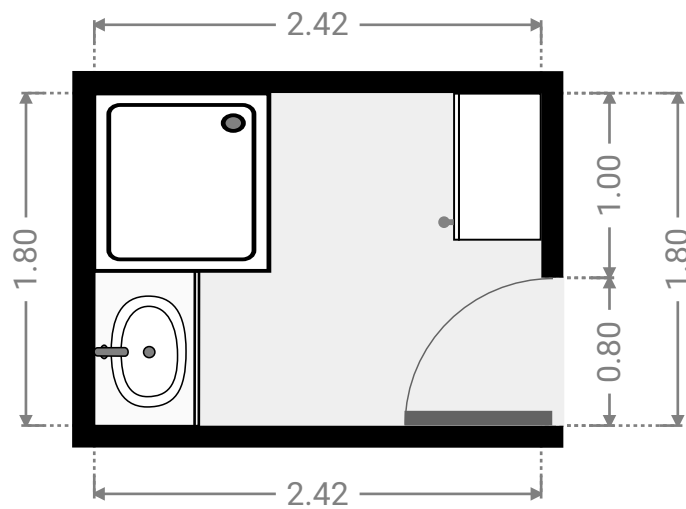
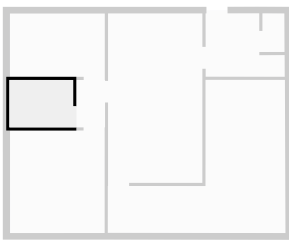
▼ **Bedroom**
Ground Floor

WIDTH: 3.60 m • LENGTH: 2.40 m
AREA: 8.64 m² • PERIMETER: 12.00 m



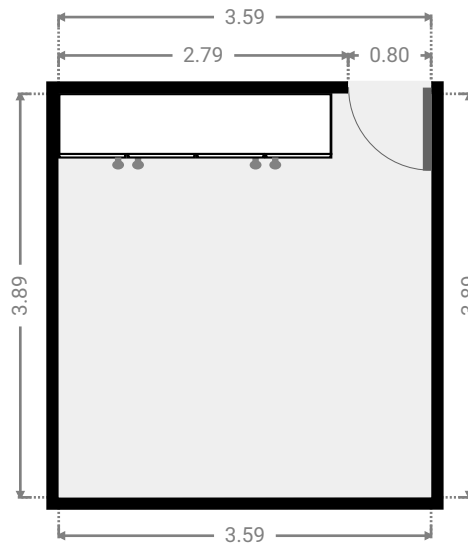
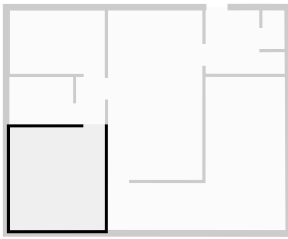
▼ **Bathroom**
Ground Floor

WIDTH: 2.42 m • LENGTH: 1.80 m
AREA: 4.36 m² • PERIMETER: 8.44 m



▼ **Master Bedroom**
Ground Floor

WIDTH: 3.59 m • LENGTH: 3.89 m
AREA: 13.97 m² • PERIMETER: 14.96 m



▼ **Garage**
Ground Floor

WIDTH: 6.74 m • LENGTH: 5.83 m
AREA: 24.17 m² • PERIMETER: 25.08 m

