

# 197 Vallis Street

**SUBMITTED BY**  
Ray White Rockhampton Casey  
stockers@cqoz.com

---

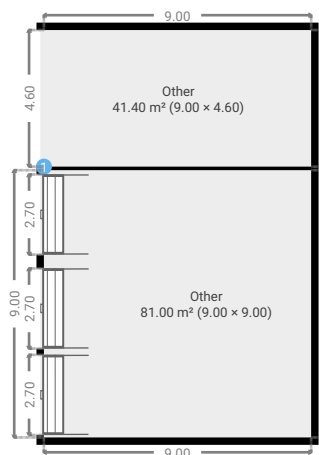
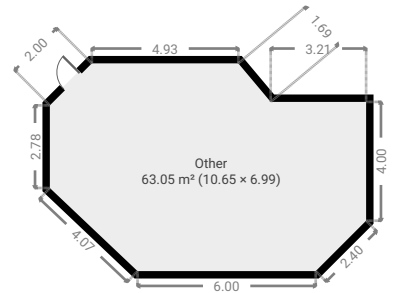
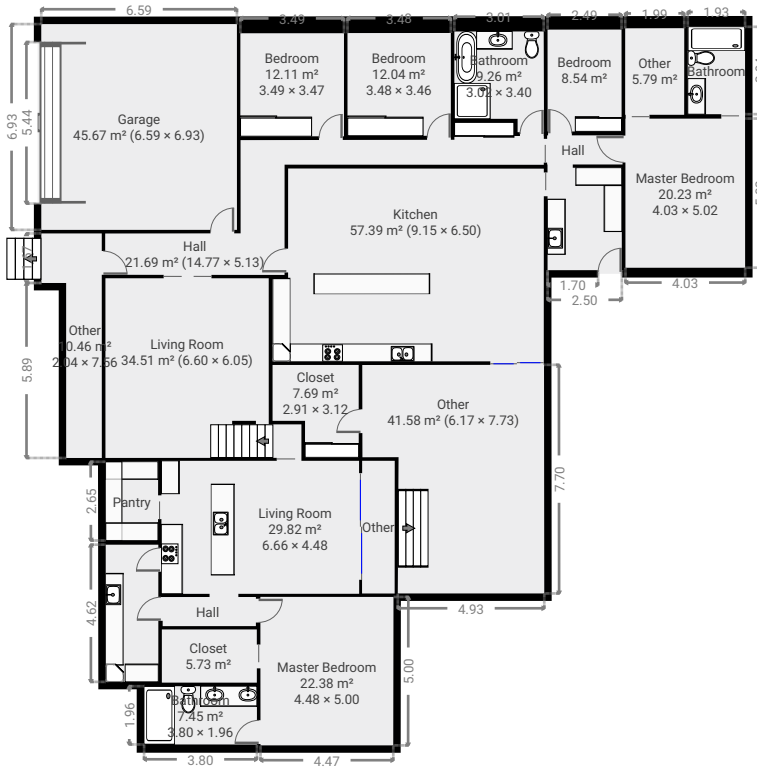
**CREATED ON**  
2022-02-02

---

**Floors**  
1

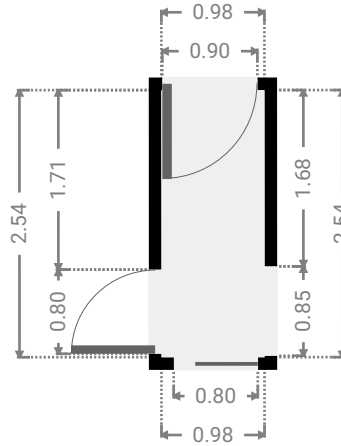
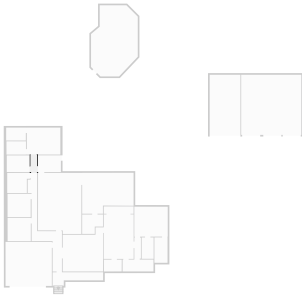
---

## ▼ Ground Floor



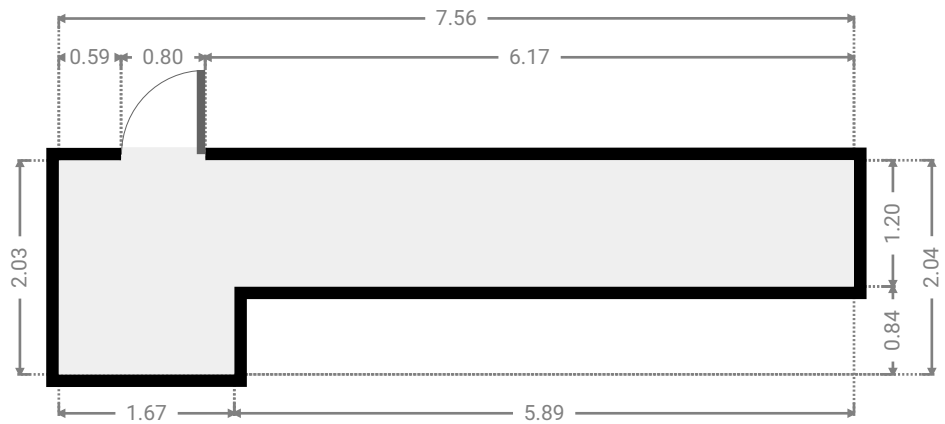
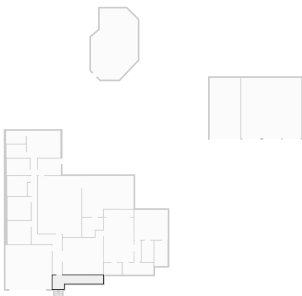
▼ **Hall**  
Ground Floor

WIDTH: 0.98 m • LENGTH: 2.54 m  
AREA: 2.49 m<sup>2</sup> • PERIMETER: 7.04 m



▼ **Other**  
Ground Floor

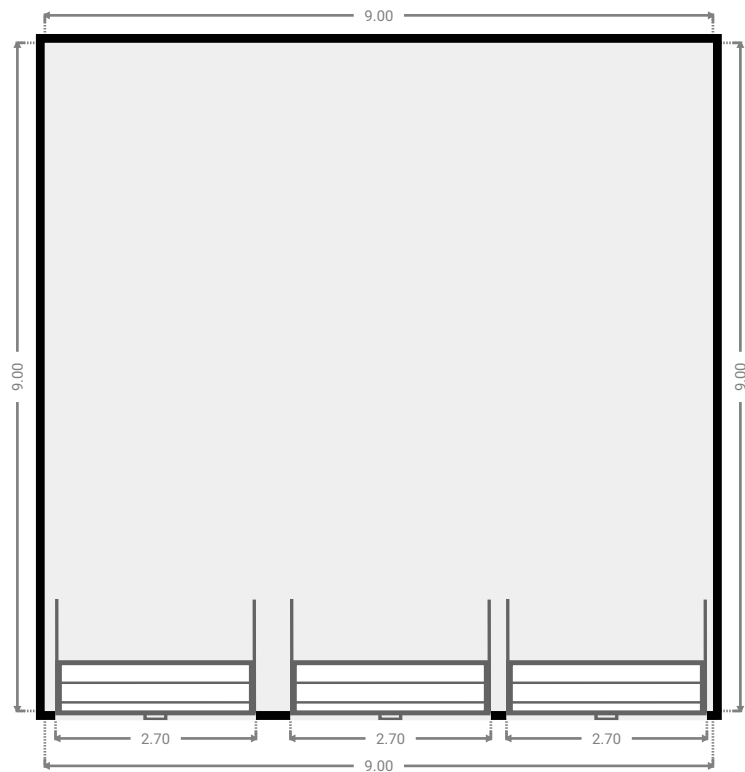
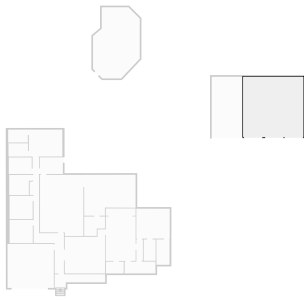
WIDTH: 7.56 m • LENGTH: 2.04 m  
AREA: 10.46 m<sup>2</sup> • PERIMETER: 19.19 m



FLOORS: 1

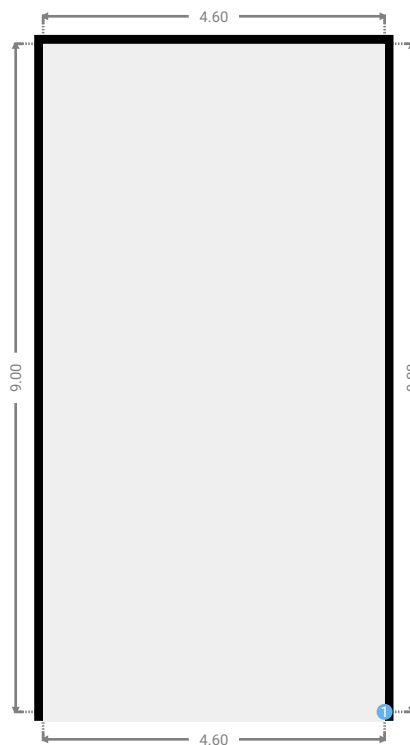
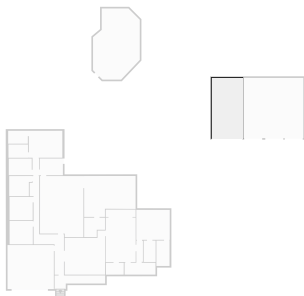
▼ **Other**  
Ground Floor

WIDTH: 9.00 m • LENGTH: 9.00 m  
AREA: 81.00 m<sup>2</sup> • PERIMETER: 36.00 m



▼ **Other**  
Ground Floor

WIDTH: 4.60 m • LENGTH: 9.00 m  
AREA: 41.40 m<sup>2</sup> • PERIMETER: 27.20 m



▼ Other/Ground Floor

---

1 OPENING

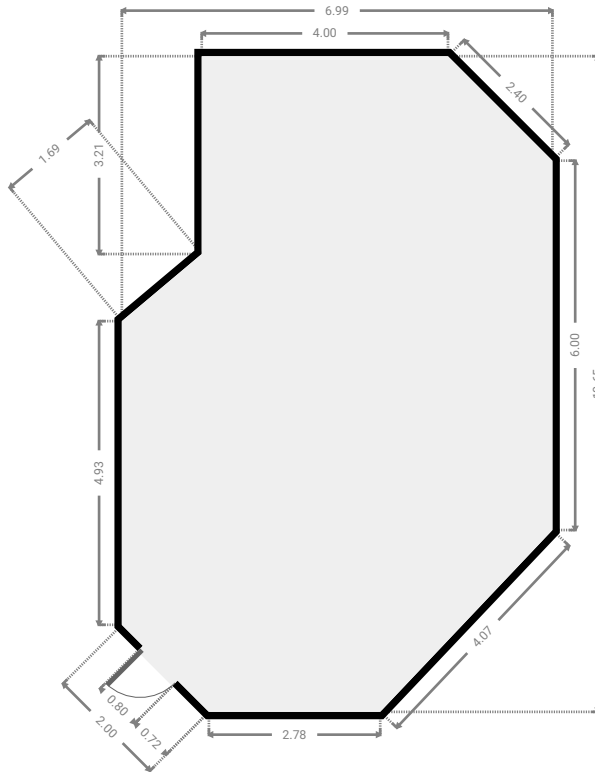
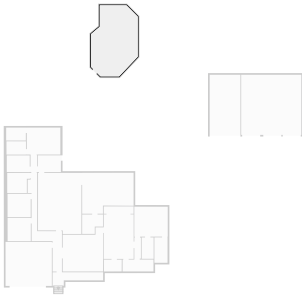
Height  
0.00 m



FLOORS: 1

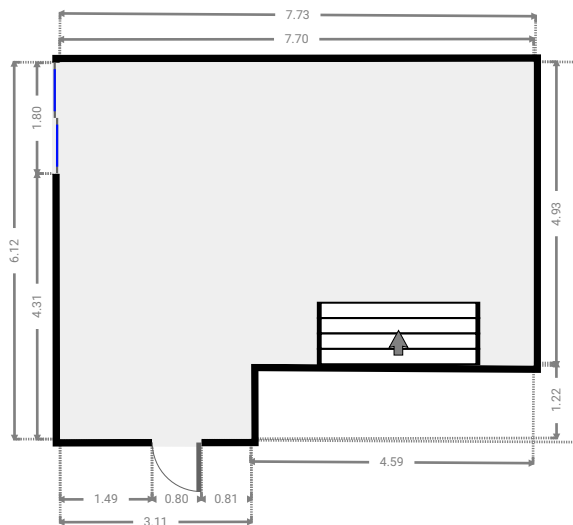
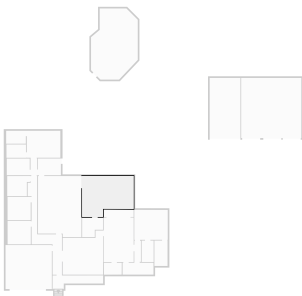
▼ Other  
Ground Floor

WIDTH: 6.99 m • LENGTH: 10.65 m  
AREA: 63.05 m<sup>2</sup> • PERIMETER: 31.09 m



▼ Other  
Ground Floor

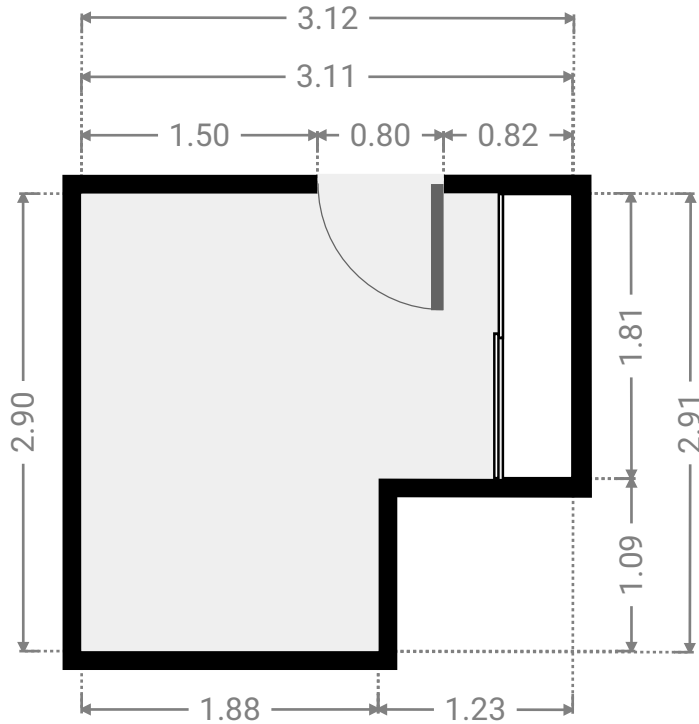
WIDTH: 7.73 m • LENGTH: 6.17 m  
AREA: 41.58 m<sup>2</sup> • PERIMETER: 27.67 m



FLOORS: 1

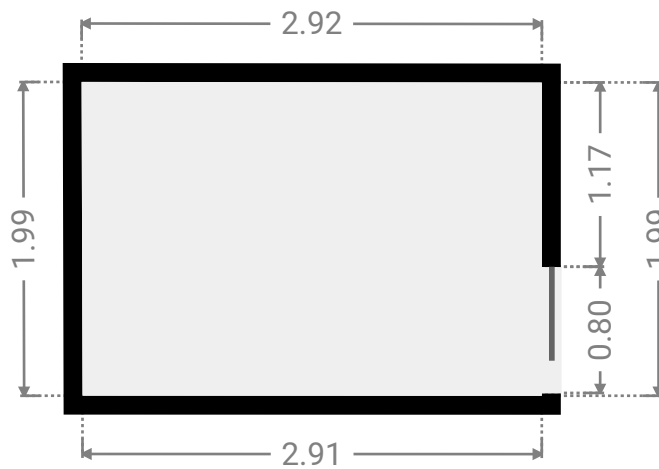
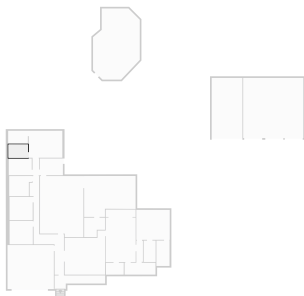
▼ **Closet**  
Ground Floor

WIDTH: 3.12 m • LENGTH: 2.91 m  
AREA: 7.69 m<sup>2</sup> • PERIMETER: 12.03 m



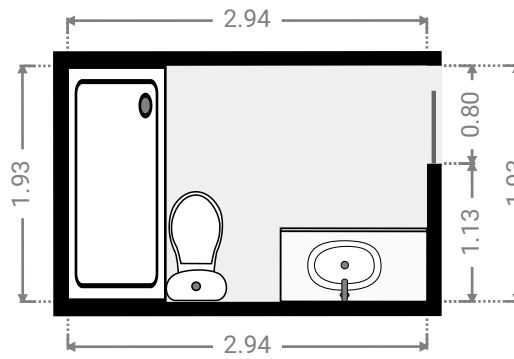
▼ **Other**  
Ground Floor

WIDTH: 2.92 m • LENGTH: 1.99 m  
AREA: 5.79 m<sup>2</sup> • PERIMETER: 9.80 m



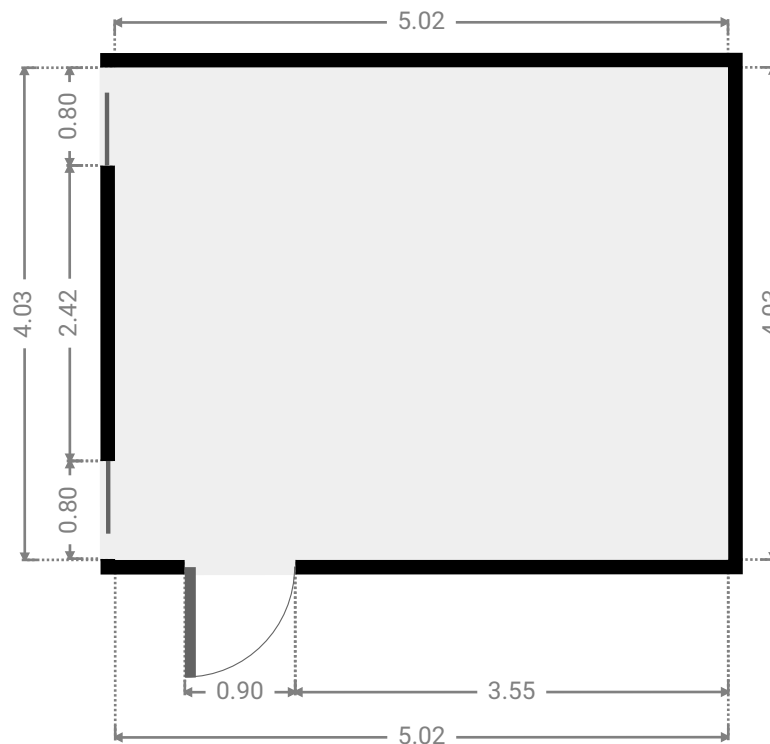
▼ **Bathroom**  
Ground Floor

WIDTH: 2.94 m • LENGTH: 1.93 m  
AREA: 5.68 m<sup>2</sup> • PERIMETER: 9.74 m



▼ **Master Bedroom**  
Ground Floor

WIDTH: 5.02 m • LENGTH: 4.03 m  
AREA: 20.23 m<sup>2</sup> • PERIMETER: 18.10 m

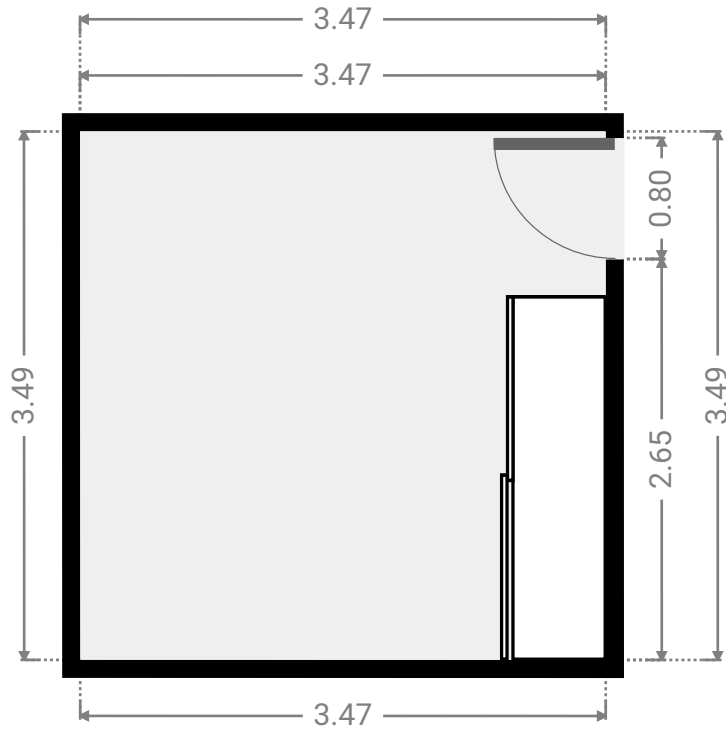




FLOORS: 1

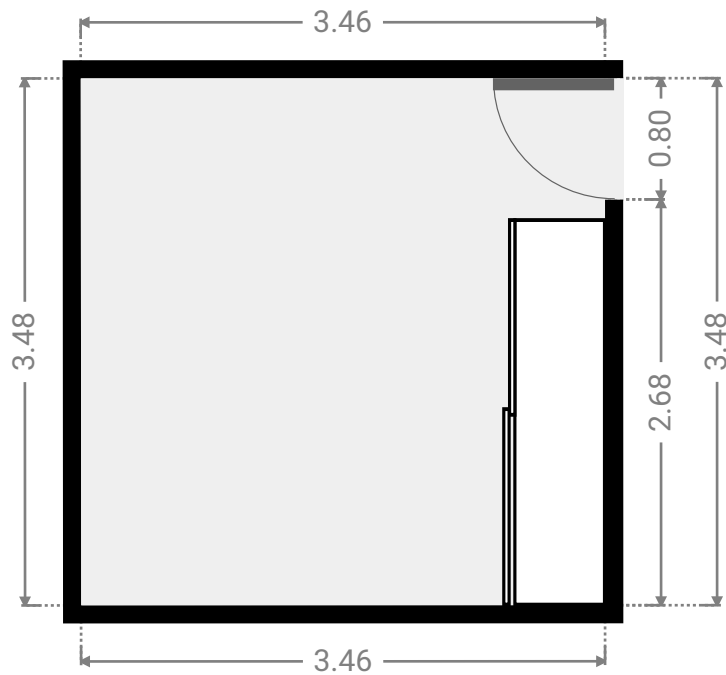
▼ **Bedroom**  
Ground Floor

WIDTH: 3.47 m • LENGTH: 3.49 m  
AREA: 12.11 m<sup>2</sup> • PERIMETER: 13.92 m



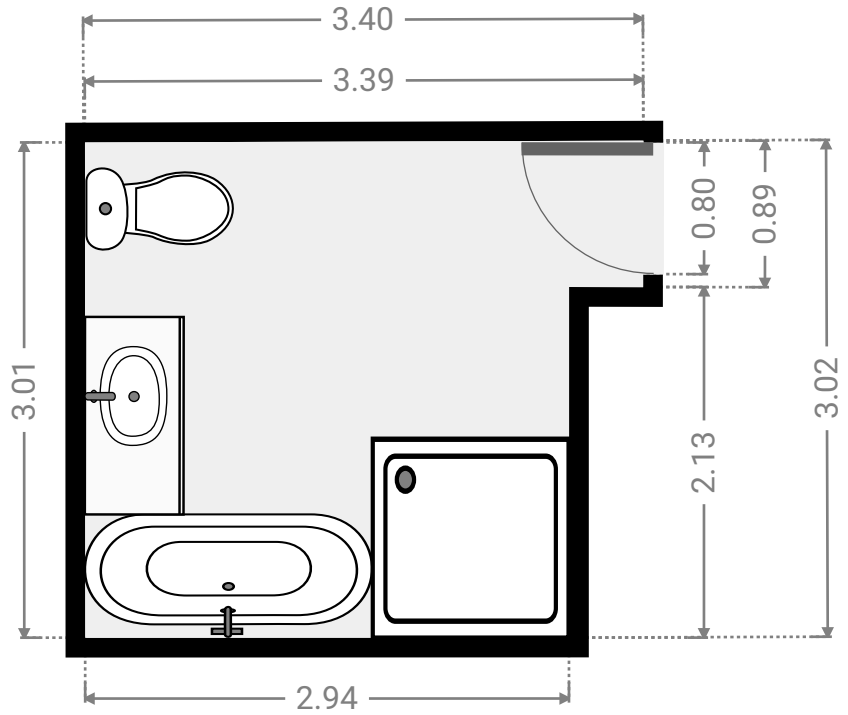
▼ **Bedroom**  
Ground Floor

WIDTH: 3.46 m • LENGTH: 3.48 m  
AREA: 12.04 m<sup>2</sup> • PERIMETER: 13.88 m



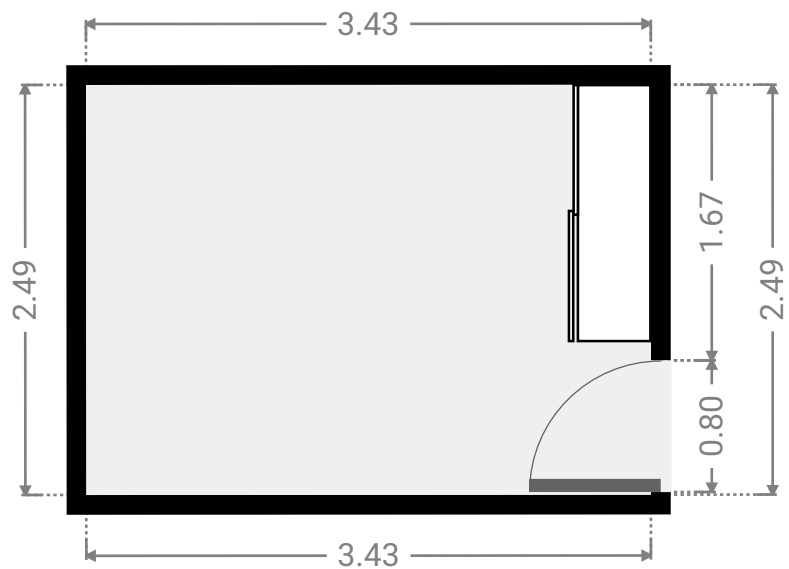
▼ **Bathroom**  
Ground Floor

WIDTH: 3.40 m • LENGTH: 3.02 m  
AREA: 9.26 m<sup>2</sup> • PERIMETER: 12.81 m



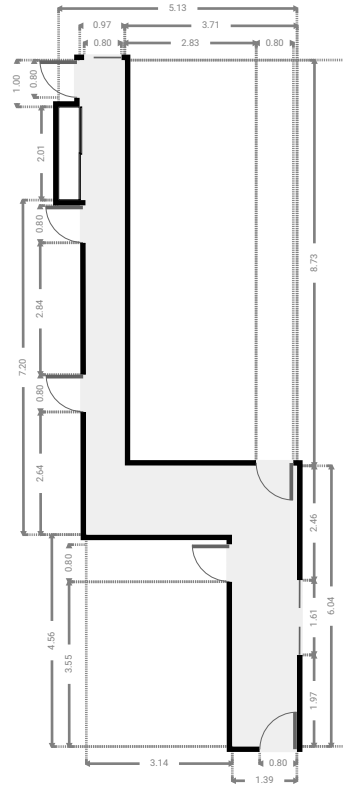
▼ **Bedroom**  
Ground Floor

WIDTH: 3.43 m • LENGTH: 2.49 m  
AREA: 8.54 m<sup>2</sup> • PERIMETER: 11.84 m



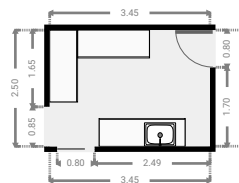
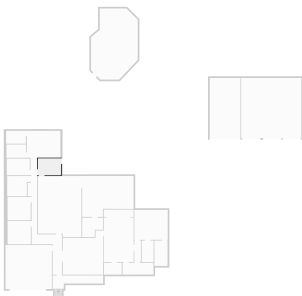
▼ **Hall**  
Ground Floor

WIDTH: 5.13 m • LENGTH: 14.77 m  
AREA: 21.69 m<sup>2</sup> • PERIMETER: 39.79 m



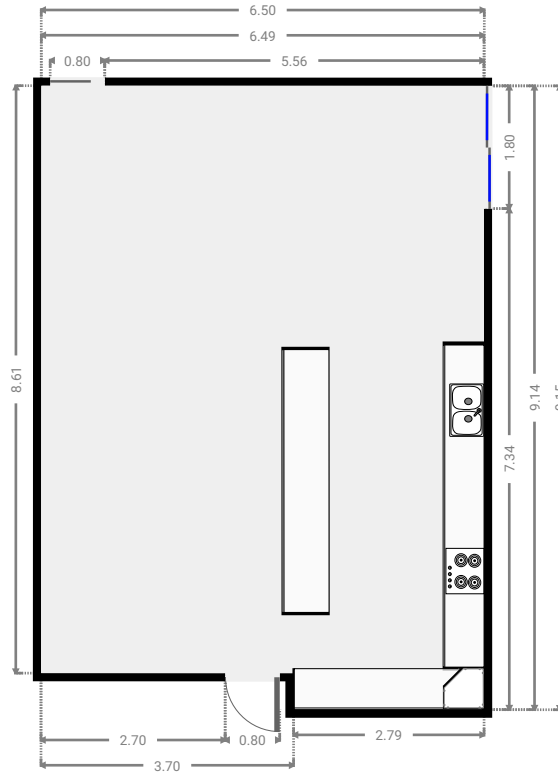
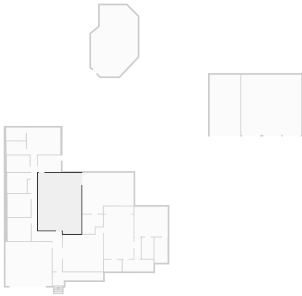
▼ **Laundry Room**  
Ground Floor

WIDTH: 3.45 m • LENGTH: 2.50 m  
AREA: 8.63 m<sup>2</sup> • PERIMETER: 11.90 m



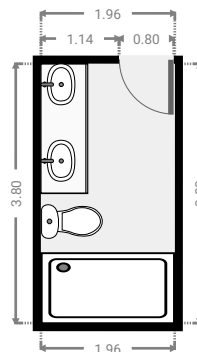
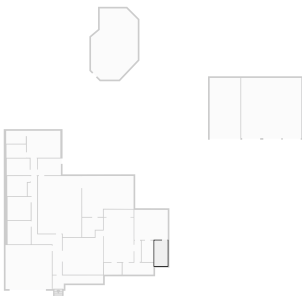
▼ Kitchen  
Ground Floor

WIDTH: 6.50 m • LENGTH: 9.15 m  
AREA: 57.39 m<sup>2</sup> • PERIMETER: 31.27 m



▼ Bathroom  
Ground Floor

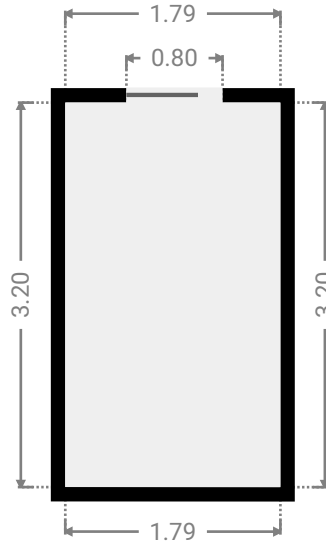
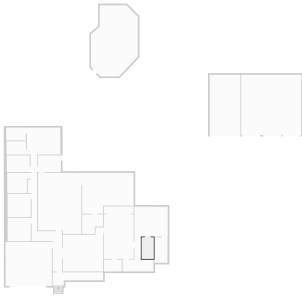
WIDTH: 1.96 m • LENGTH: 3.80 m  
AREA: 7.45 m<sup>2</sup> • PERIMETER: 11.52 m



FLOORS: 1

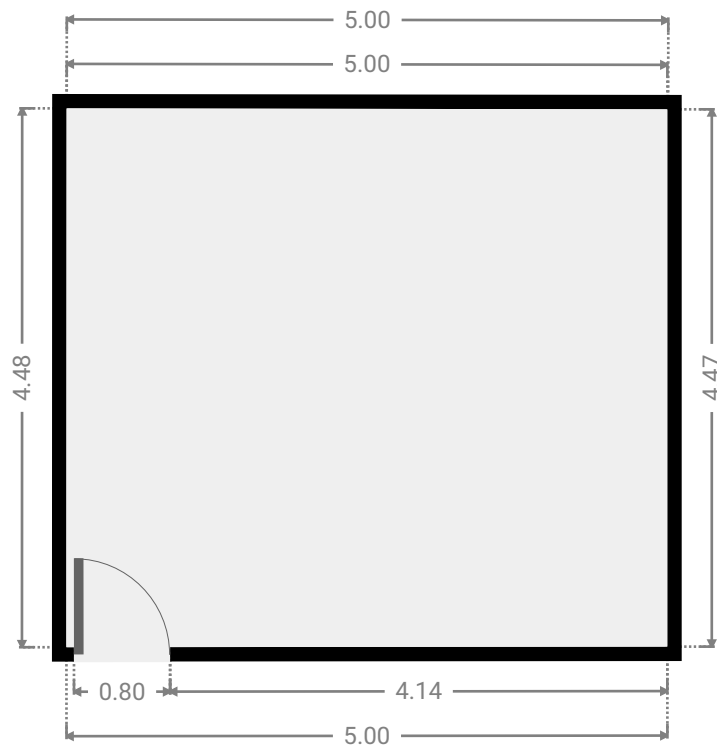
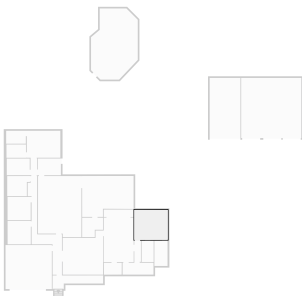
▼ **Closet**  
Ground Floor

WIDTH: 1.79 m • LENGTH: 3.20 m  
AREA: 5.73 m<sup>2</sup> • PERIMETER: 9.98 m



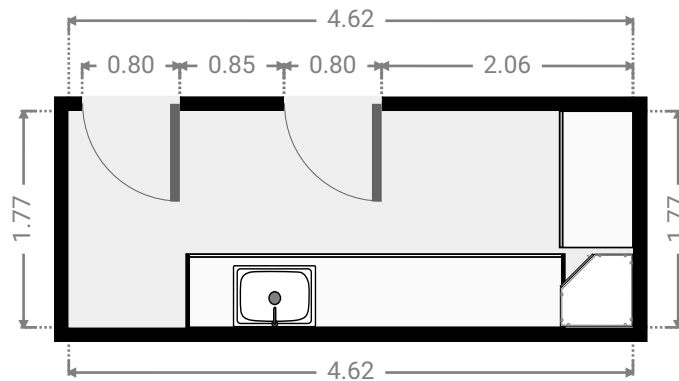
▼ **Master Bedroom**  
Ground Floor

WIDTH: 5.00 m • LENGTH: 4.48 m  
AREA: 22.38 m<sup>2</sup> • PERIMETER: 18.95 m



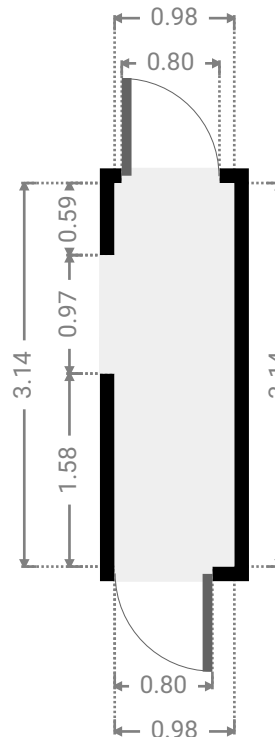
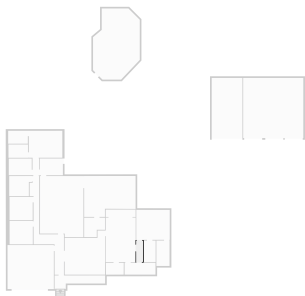
▼ **Laundry Room**  
Ground Floor

WIDTH: 4.62 m • LENGTH: 1.77 m  
AREA: 8.18 m<sup>2</sup> • PERIMETER: 12.78 m



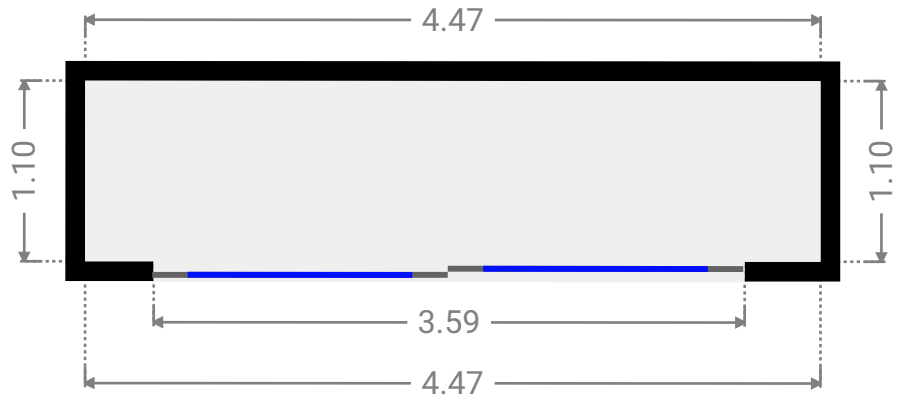
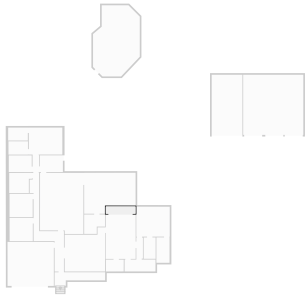
▼ **Hall**  
Ground Floor

WIDTH: 0.98 m • LENGTH: 3.14 m  
AREA: 3.08 m<sup>2</sup> • PERIMETER: 8.24 m



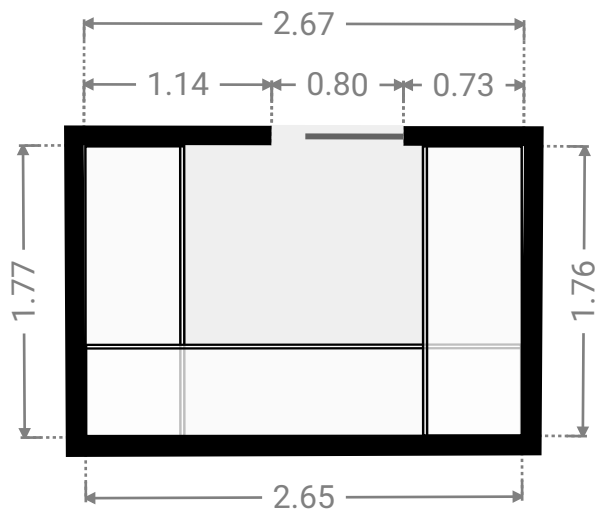
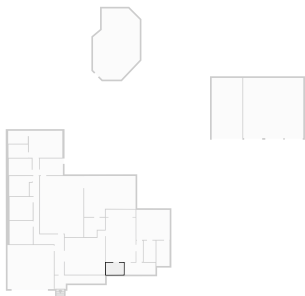
▼ **Other**  
Ground Floor

WIDTH: 4.47 m • LENGTH: 1.10 m  
AREA: 4.90 m<sup>2</sup> • PERIMETER: 11.13 m



▼ **Pantry**  
Ground Floor

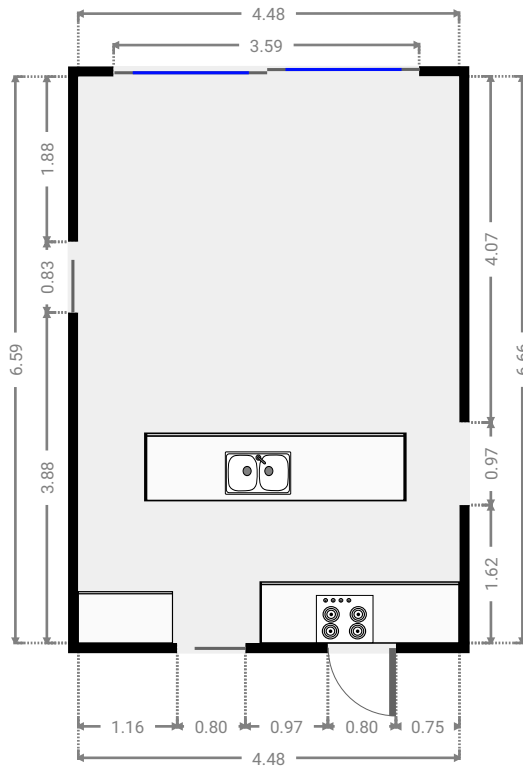
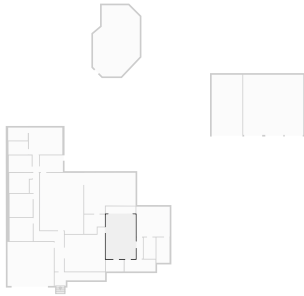
WIDTH: 2.67 m • LENGTH: 1.77 m  
AREA: 4.70 m<sup>2</sup> • PERIMETER: 8.86 m



FLOORS: 1

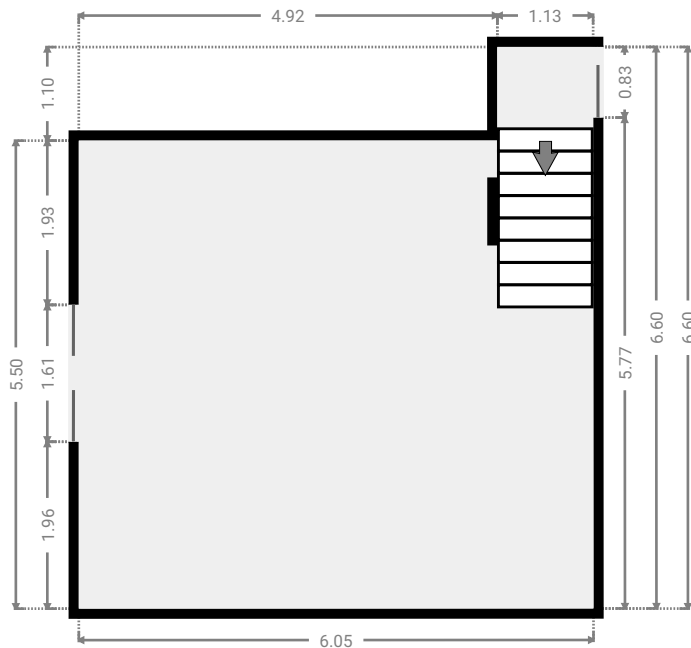
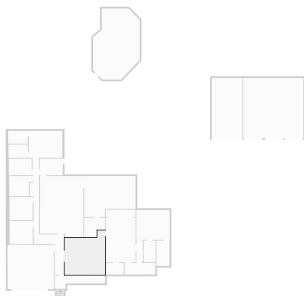
▼ Living Room  
Ground Floor

WIDTH: 4.48 m • LENGTH: 6.66 m  
AREA: 29.82 m<sup>2</sup> • PERIMETER: 22.27 m



▼ Living Room  
Ground Floor

WIDTH: 6.05 m • LENGTH: 6.60 m  
AREA: 34.51 m<sup>2</sup> • PERIMETER: 25.30 m





▼ **Garage**  
Ground Floor

WIDTH: 6.93 m • LENGTH: 6.59 m  
AREA: 45.67 m<sup>2</sup> • PERIMETER: 27.04 m

