

# 19 Stenlake Avenue

**SUBMITTED BY**

Ray White Rockhampton Casey  
stockers@cqoz.com

---

**CREATED ON**

2022-06-15

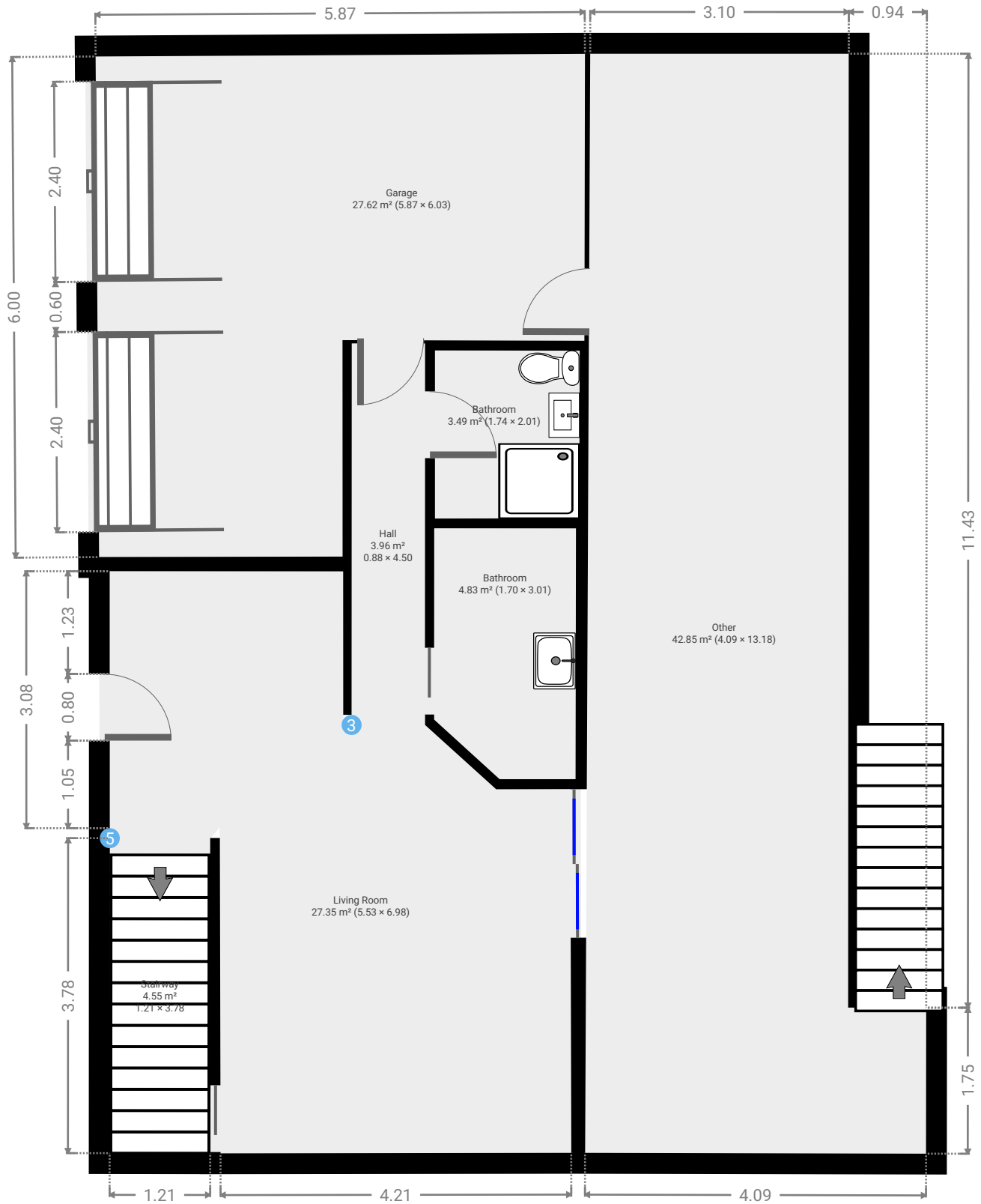
---

**Floors**

2

---

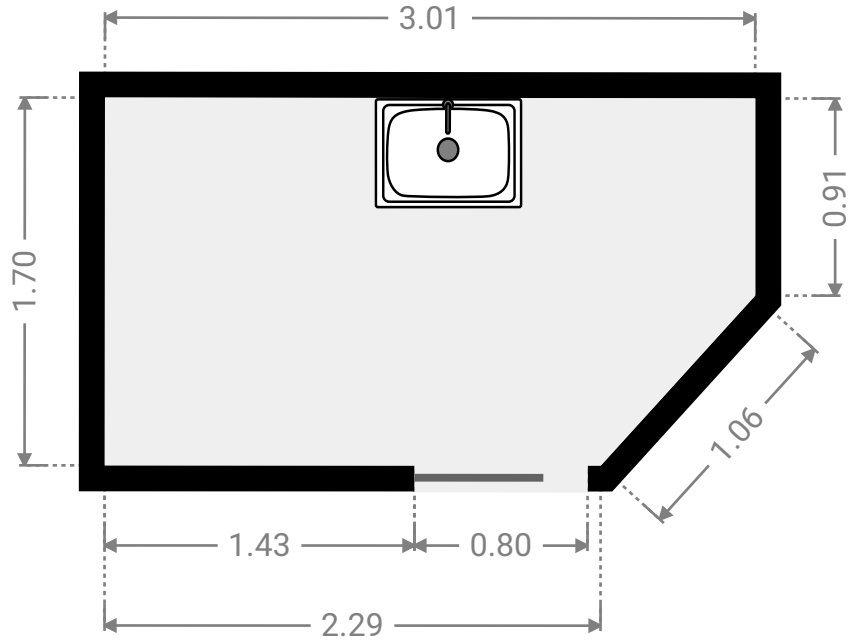
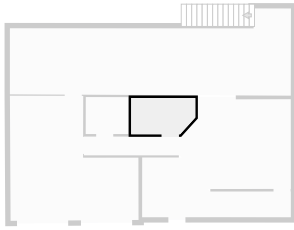
▼ Ground Floor



FLOORS: 2

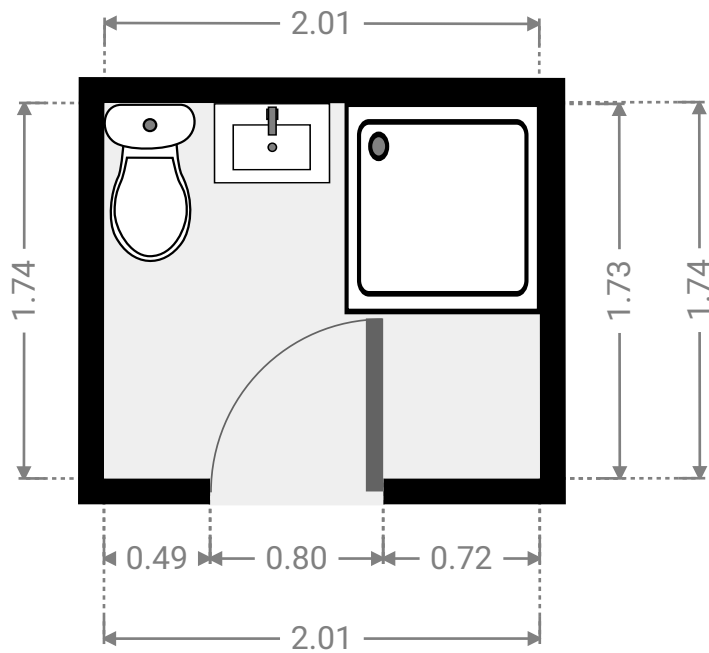
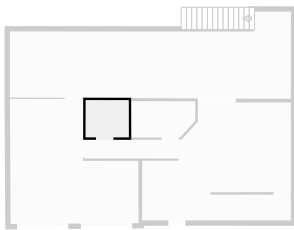
▼ **Bathroom**  
Ground Floor

WIDTH: 3.01 m • LENGTH: 1.70 m  
AREA: 4.83 m<sup>2</sup> • PERIMETER: 8.97 m



▼ **Bathroom**  
Ground Floor

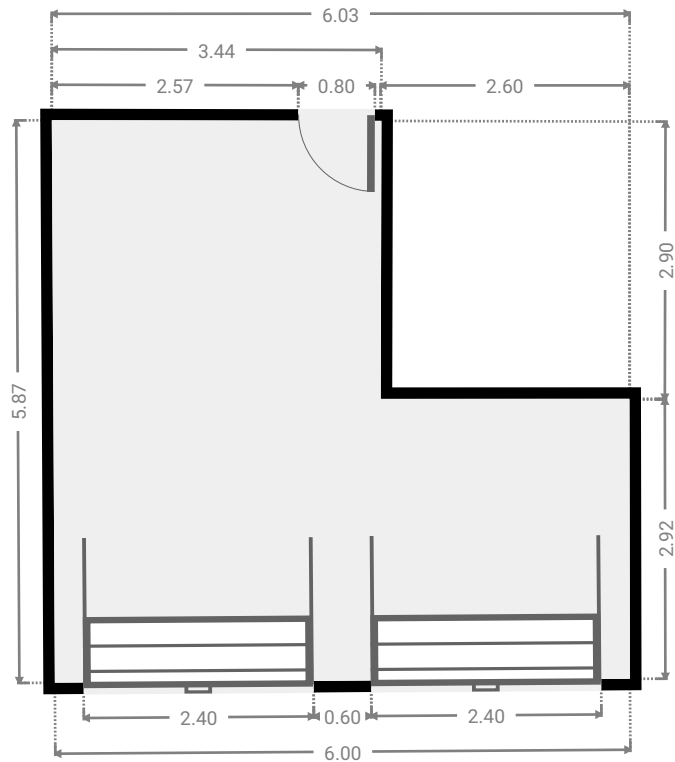
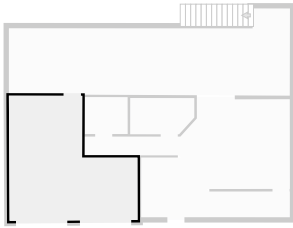
WIDTH: 2.01 m • LENGTH: 1.74 m  
AREA: 3.49 m<sup>2</sup> • PERIMETER: 7.49 m



FLOORS: 2

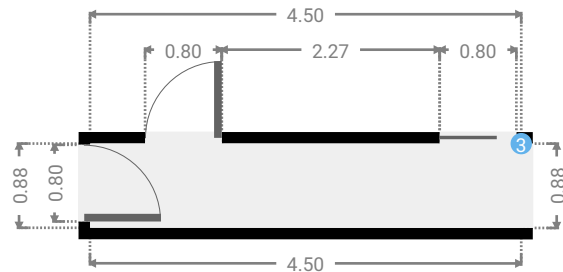
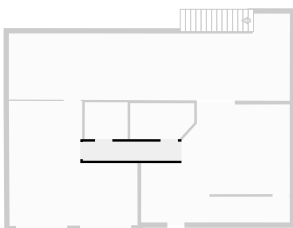
▼ **Garage**  
Ground Floor

WIDTH: 6.03 m • LENGTH: 5.87 m  
AREA: 27.62 m<sup>2</sup> • PERIMETER: 23.73 m



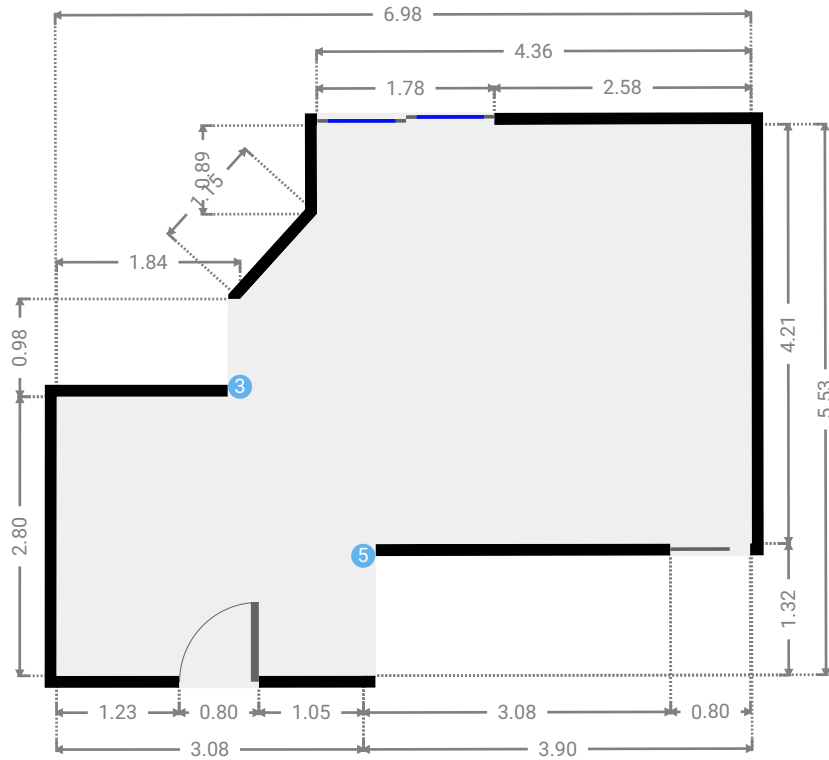
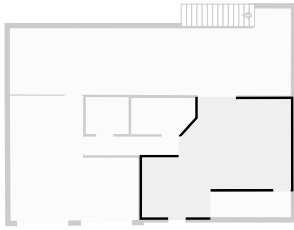
▼ **Hall**  
Ground Floor

WIDTH: 4.50 m • LENGTH: 0.88 m  
AREA: 3.96 m<sup>2</sup> • PERIMETER: 10.76 m



▼ Living Room  
Ground Floor

WIDTH: 6.98 m • LENGTH: 5.53 m  
AREA: 27.35 m<sup>2</sup> • PERIMETER: 24.53 m



▼ Living Room/Ground Floor

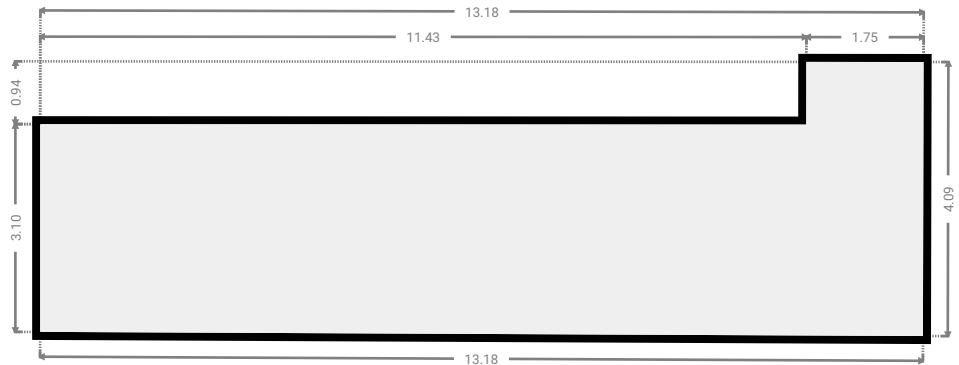
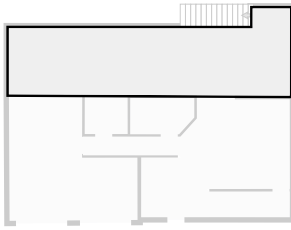
3 OPENING

Height  
0.00 m



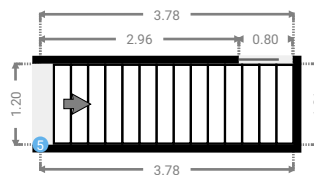
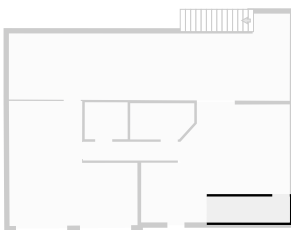
▼ **Other**  
Ground Floor

WIDTH: 13.18 m • LENGTH: 4.09 m  
AREA: 42.85 m<sup>2</sup> • PERIMETER: 34.49 m



▼ **Stairway**  
Ground Floor

WIDTH: 3.78 m • LENGTH: 1.21 m  
AREA: 4.55 m<sup>2</sup> • PERIMETER: 9.96 m



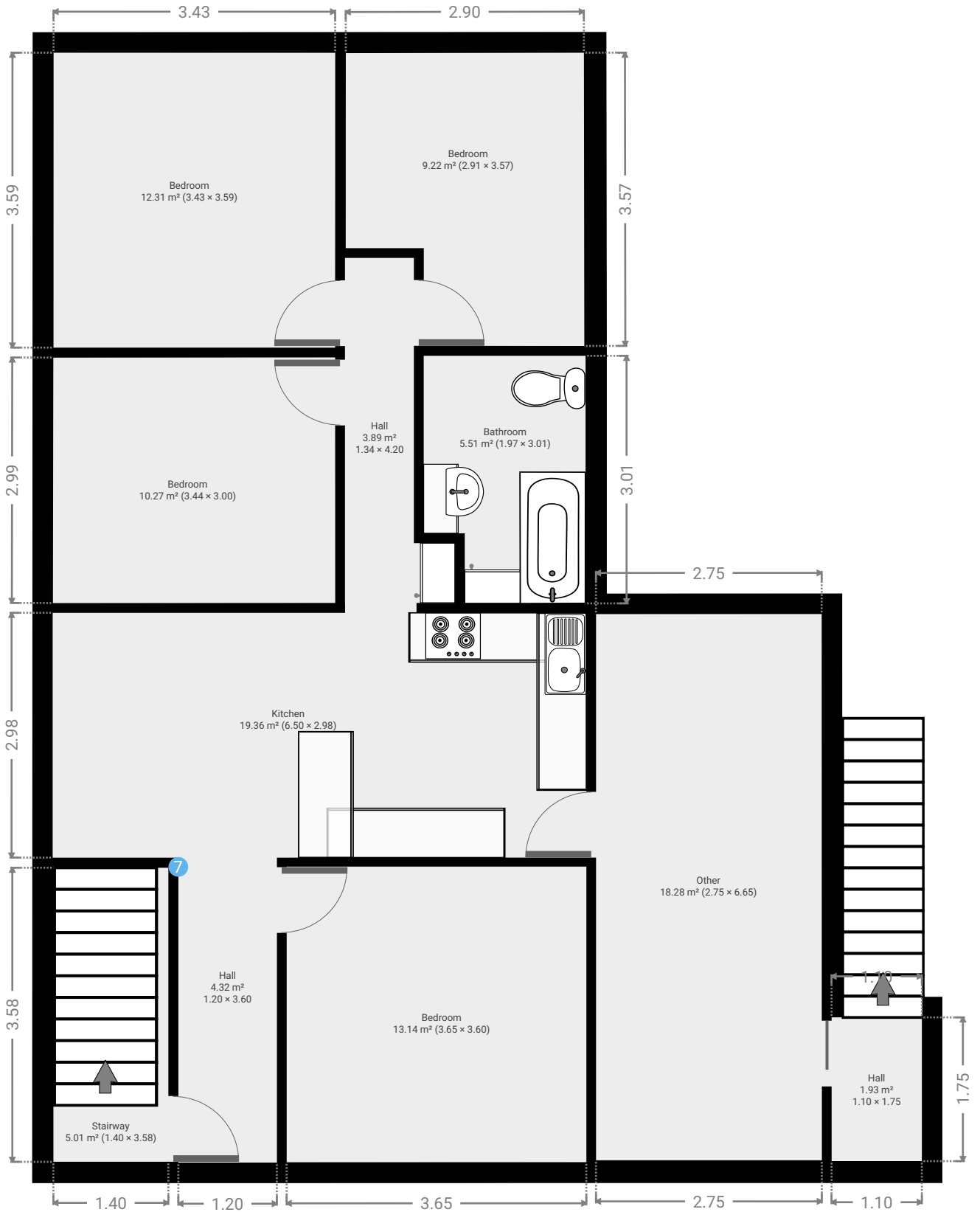
## ▼ Stairway/Ground Floor

### 5 OPENING

Height  
0.00 m



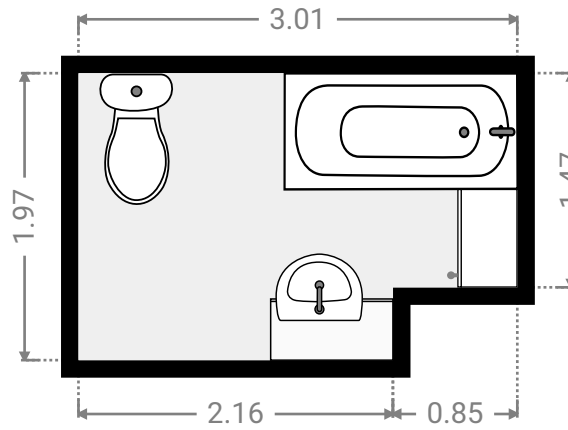
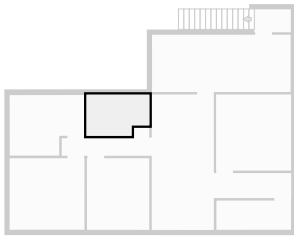
▼ 1st Floor





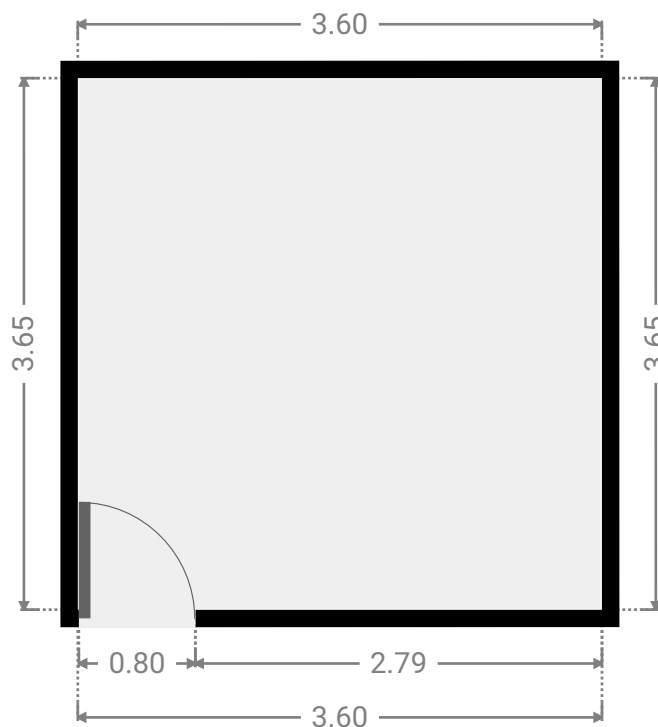
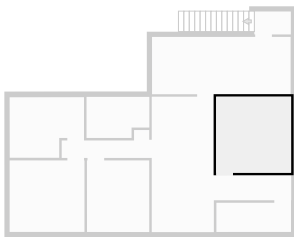
▼ Bathroom  
1st Floor

WIDTH: 3.01 m • LENGTH: 1.97 m  
AREA: 5.51 m<sup>2</sup> • PERIMETER: 9.97 m



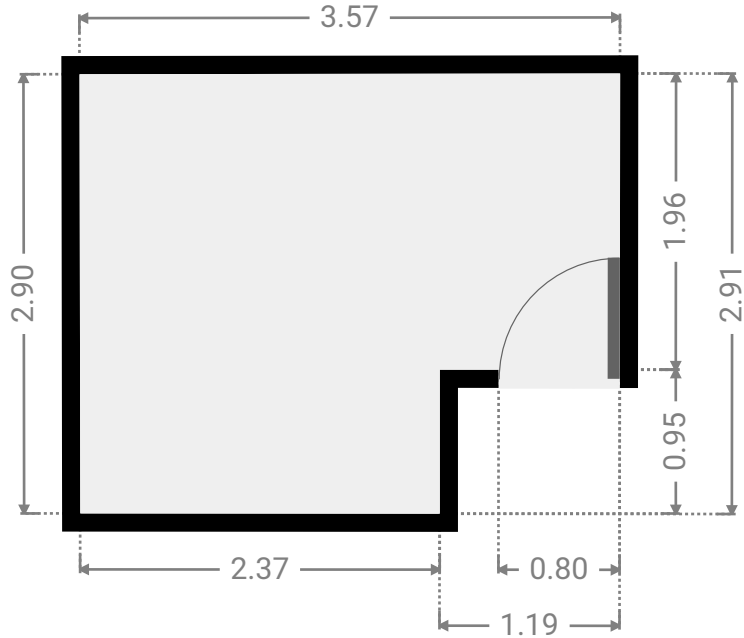
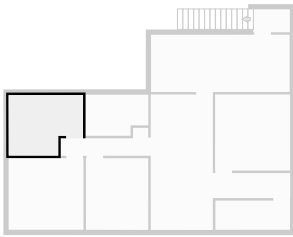
▼ Bedroom  
1st Floor

WIDTH: 3.60 m • LENGTH: 3.65 m  
AREA: 13.14 m<sup>2</sup> • PERIMETER: 14.50 m



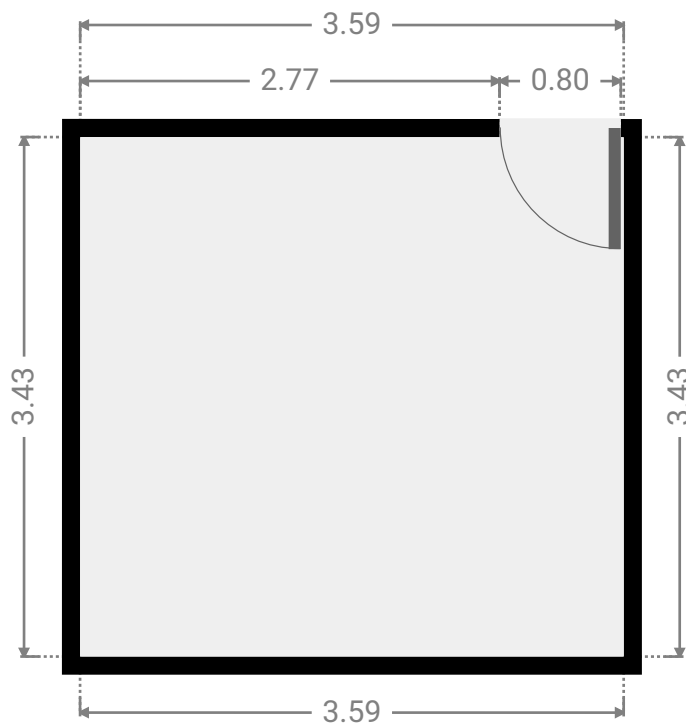
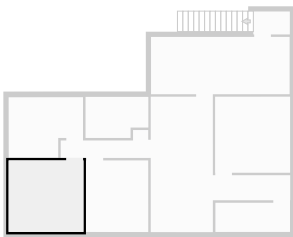
▼ **Bedroom**  
1st Floor

WIDTH: 3.57 m • LENGTH: 2.91 m  
AREA: 9.22 m<sup>2</sup> • PERIMETER: 12.94 m



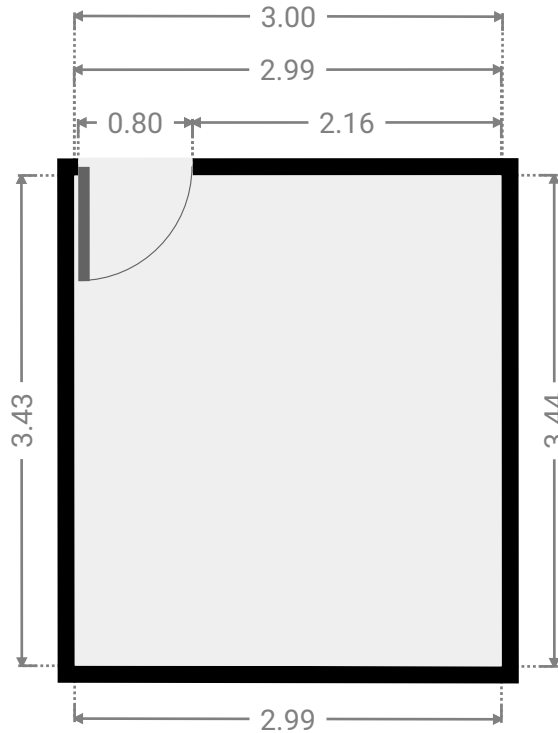
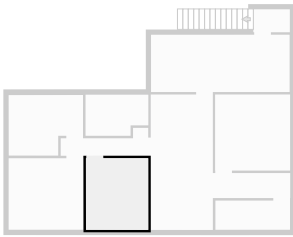
▼ **Bedroom**  
1st Floor

WIDTH: 3.59 m • LENGTH: 3.43 m  
AREA: 12.31 m<sup>2</sup> • PERIMETER: 14.04 m



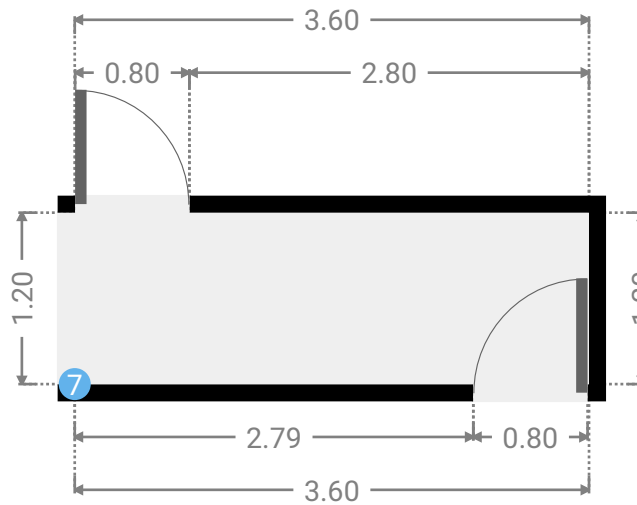
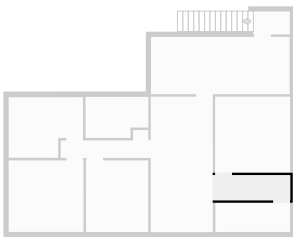
▼ **Bedroom**  
1st Floor

WIDTH: 3.00 m • LENGTH: 3.44 m  
AREA: 10.27 m<sup>2</sup> • PERIMETER: 12.85 m



▼ **Hall**  
1st Floor

WIDTH: 3.60 m • LENGTH: 1.20 m  
AREA: 4.32 m<sup>2</sup> • PERIMETER: 9.60 m



## ▼ Hall/1st Floor

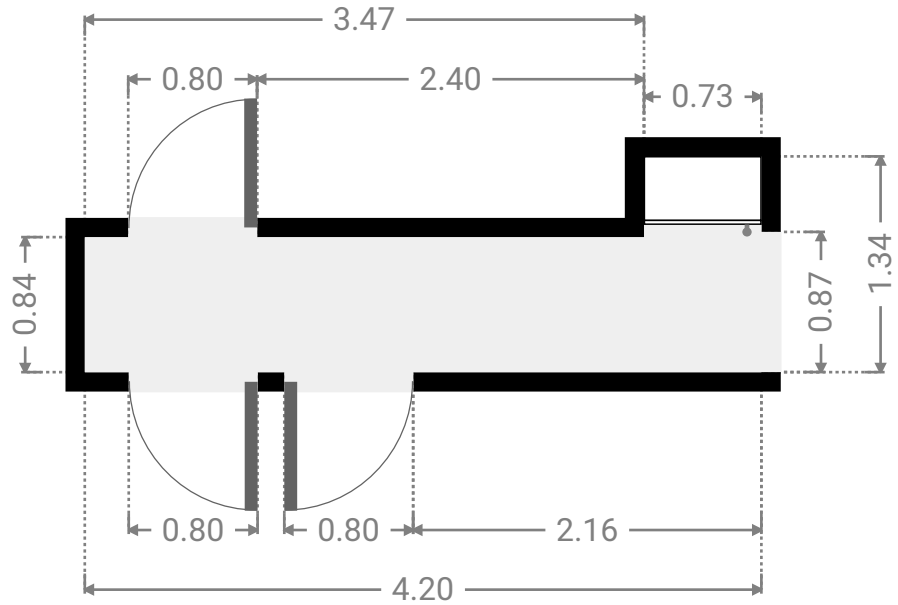
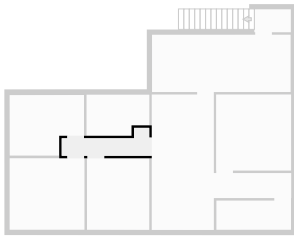
### 7 OPENING

Height  
0.00 m



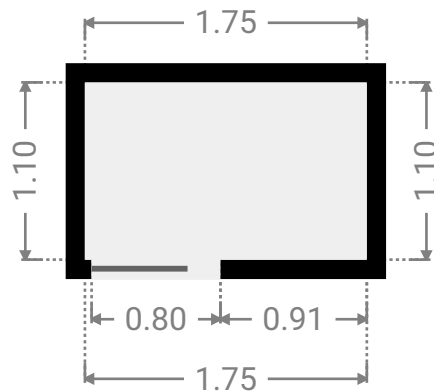
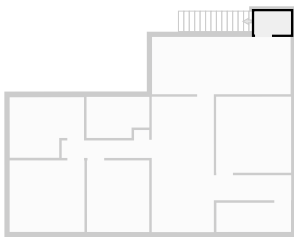
▼ **Hall**  
1st Floor

WIDTH: 4.20 m • LENGTH: 1.34 m  
AREA: 3.89 m<sup>2</sup> • PERIMETER: 11.08 m



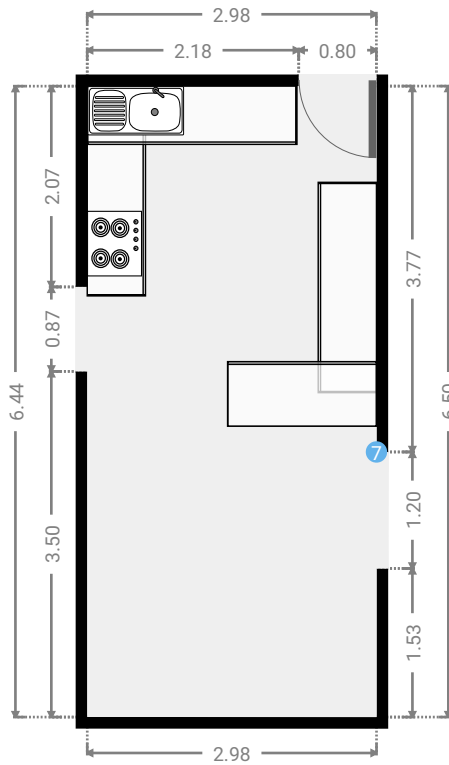
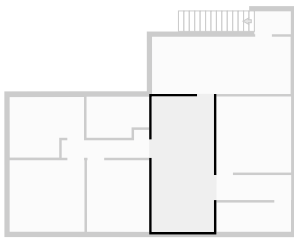
▼ **Hall**  
1st Floor

WIDTH: 1.75 m • LENGTH: 1.10 m  
AREA: 1.93 m<sup>2</sup> • PERIMETER: 5.70 m



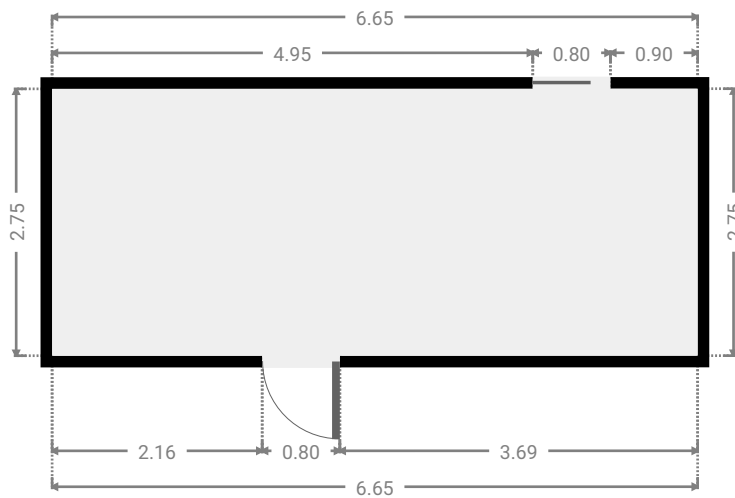
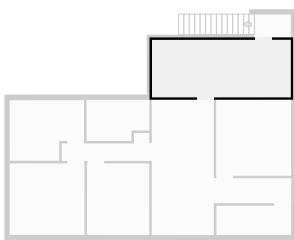
▼ Kitchen  
1st Floor

WIDTH: 2.98 m • LENGTH: 6.50 m  
AREA: 19.36 m<sup>2</sup> • PERIMETER: 18.96 m



▼ Other  
1st Floor

WIDTH: 6.65 m • LENGTH: 2.75 m  
AREA: 18.28 m<sup>2</sup> • PERIMETER: 18.80 m



▼ Stairway  
1st Floor

WIDTH: 3.58 m • LENGTH: 1.40 m  
AREA: 5.01 m<sup>2</sup> • PERIMETER: 9.96 m

