

19 Permien Street

SUBMITTED BY

Ray White Rockhampton Casey
stockers@cqoz.com

CREATED ON

2022-10-24

Floors

1

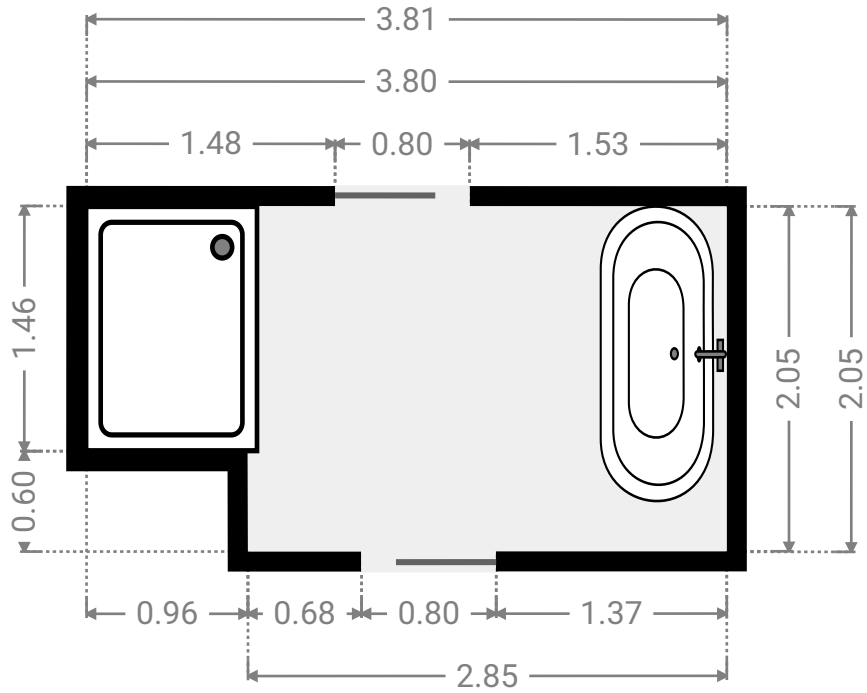
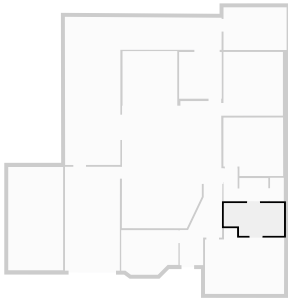
▼ Ground Floor



FLOORS: 1

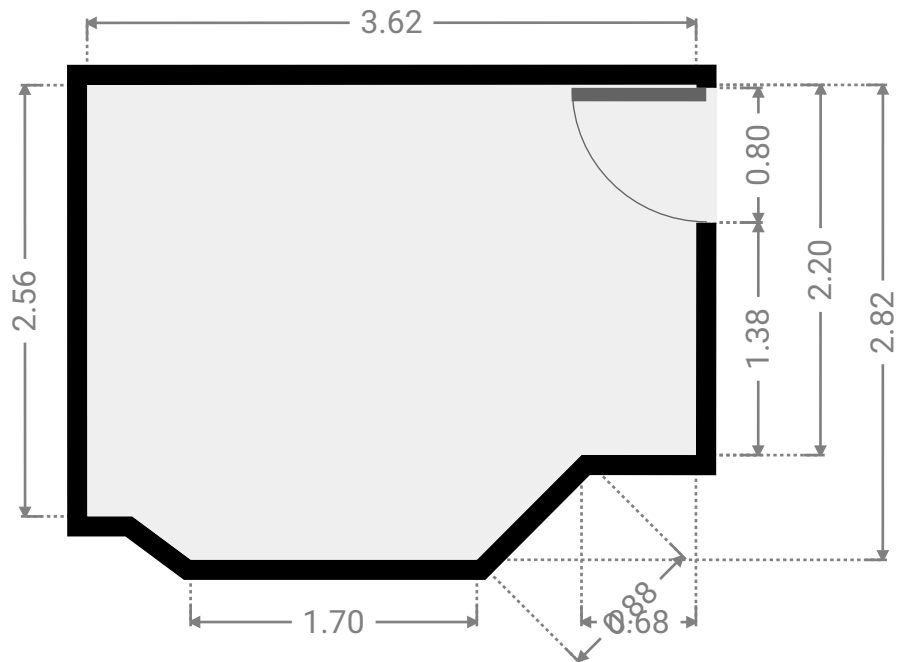
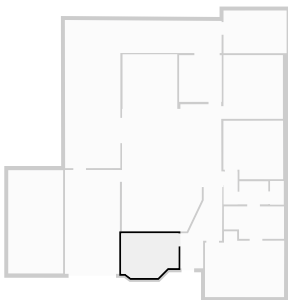
▼ Bathroom
Ground Floor

WIDTH: 3.81 m • LENGTH: 2.05 m
AREA: 7.23 m² • PERIMETER: 11.71 m



▼ Bedroom
Ground Floor

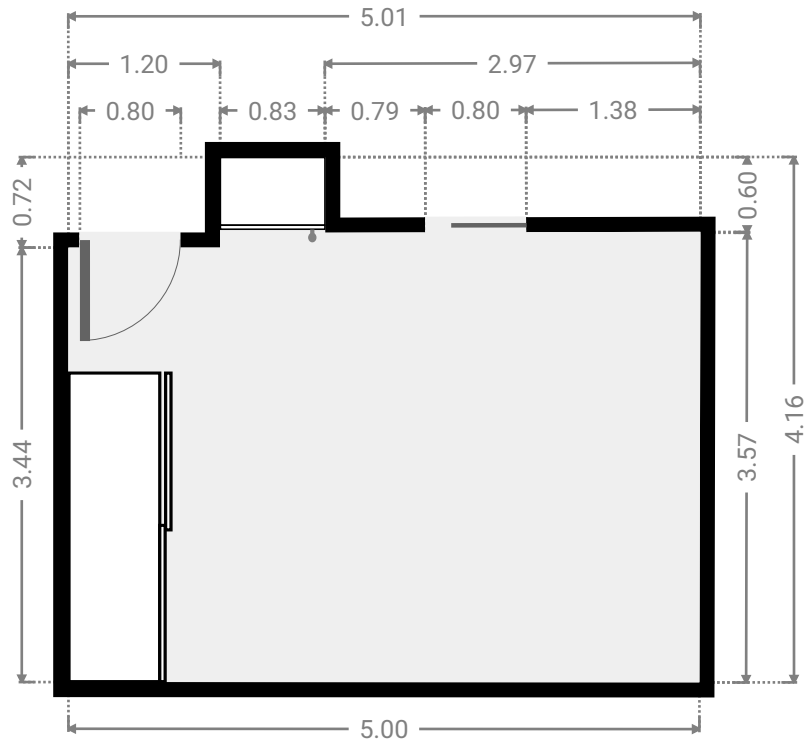
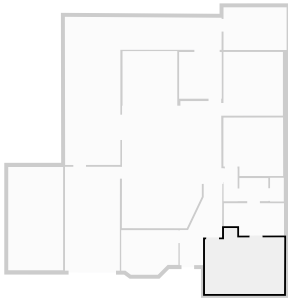
WIDTH: 3.62 m • LENGTH: 2.82 m
AREA: 9.48 m² • PERIMETER: 12.34 m



FLOORS: 1

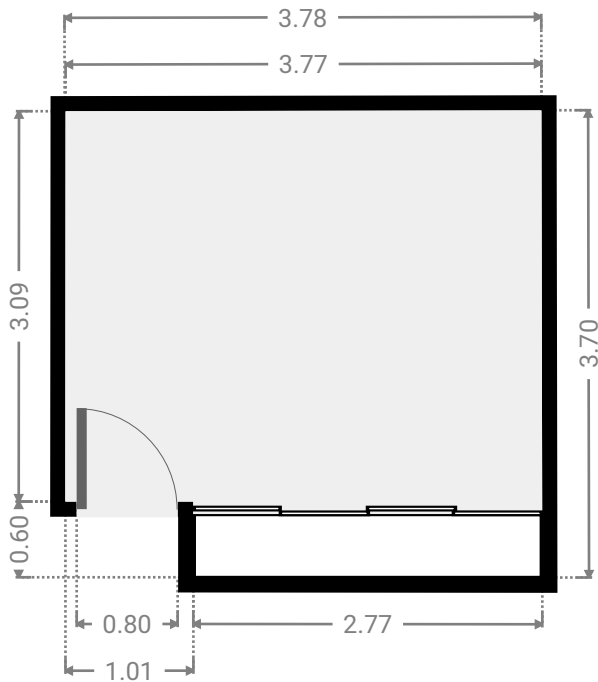
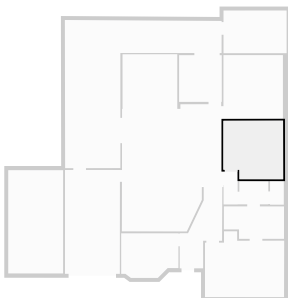
▼ **Bedroom**
Ground Floor

WIDTH: 5.01 m • LENGTH: 4.16 m
AREA: 18.19 m² • PERIMETER: 18.34 m



▼ **Bedroom**
Ground Floor

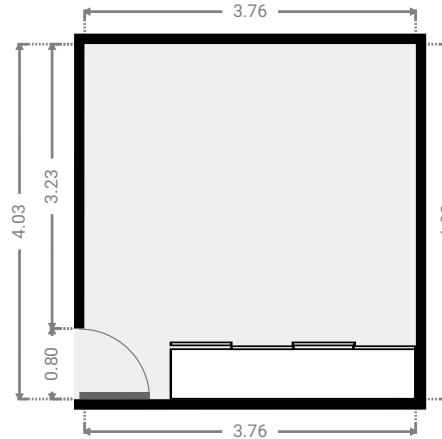
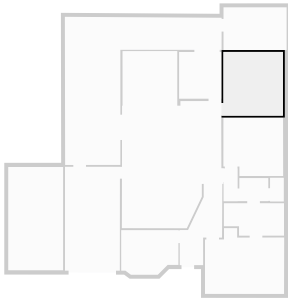
WIDTH: 3.78 m • LENGTH: 3.70 m
AREA: 13.35 m² • PERIMETER: 14.95 m



FLOORS: 1

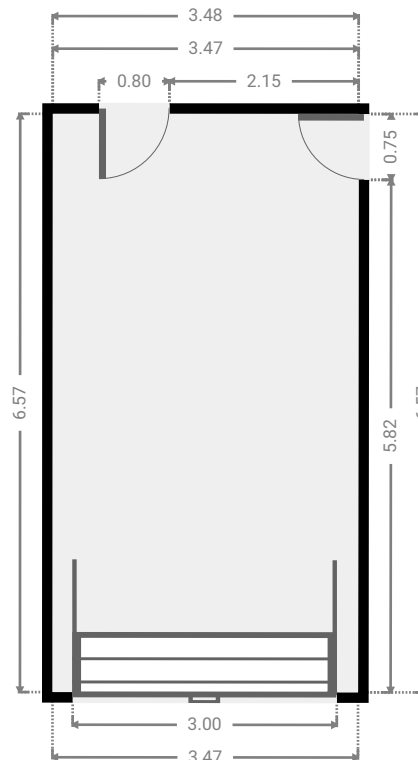
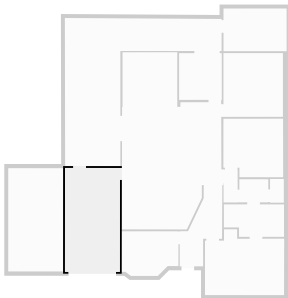
▼ **Bedroom**
Ground Floor

WIDTH: 3.76 m • LENGTH: 4.03 m
AREA: 15.15 m² • PERIMETER: 15.58 m



▼ **Garage**
Ground Floor

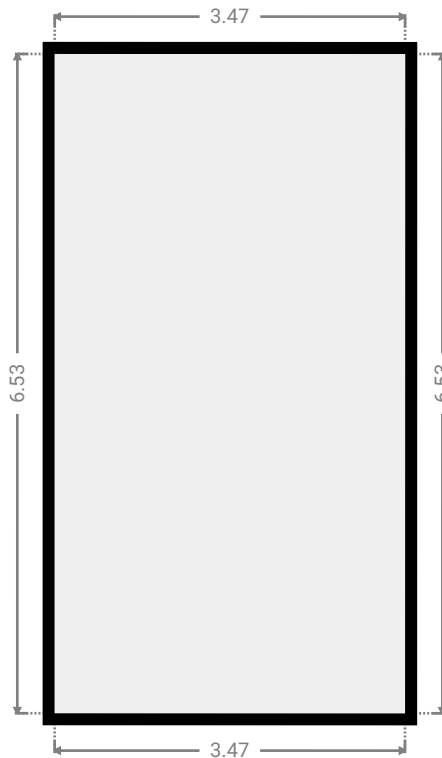
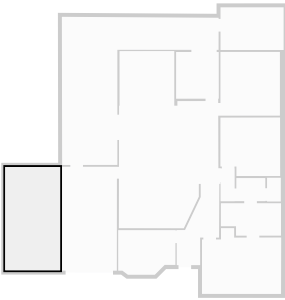
WIDTH: 3.48 m • LENGTH: 6.57 m
AREA: 22.81 m² • PERIMETER: 20.08 m



FLOORS: 1

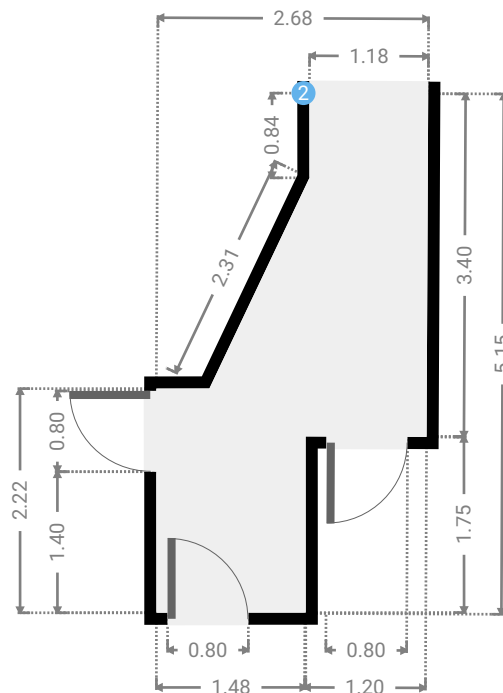
▼ Garage
Ground Floor

WIDTH: 3.47 m • LENGTH: 6.53 m
AREA: 22.66 m² • PERIMETER: 20.00 m



▼ Hall
Ground Floor

WIDTH: 2.68 m • LENGTH: 5.15 m
AREA: 8.31 m² • PERIMETER: 14.90 m



▼ **Hall**/Ground Floor

2 **OPENING**

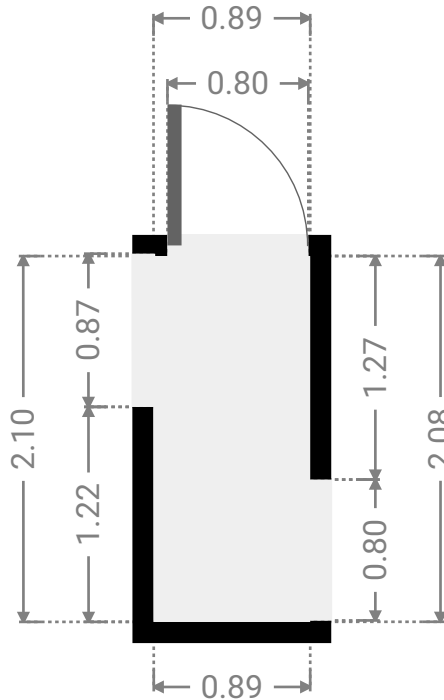
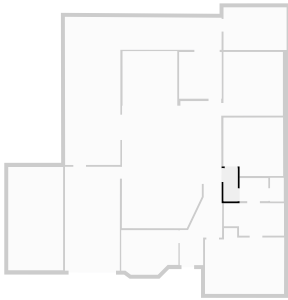
Height
0.00 m



FLOORS: 1

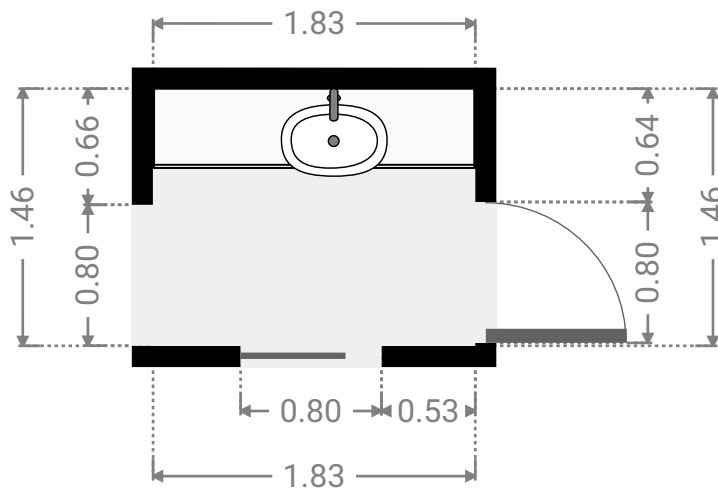
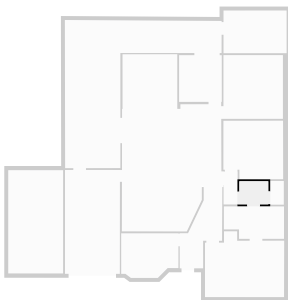
▼ **Hall**
Ground Floor

WIDTH: 0.89 m • LENGTH: 2.08 m
AREA: 1.85 m² • PERIMETER: 5.93 m



▼ **Hall**
Ground Floor

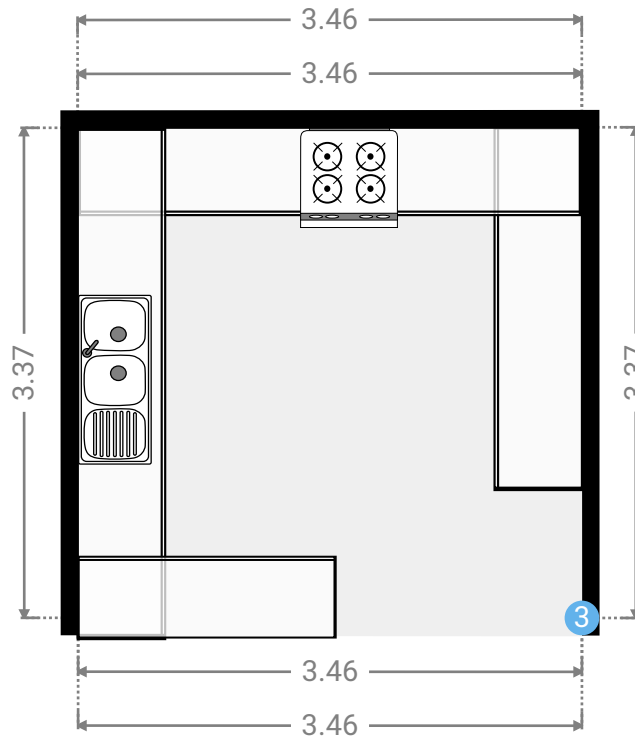
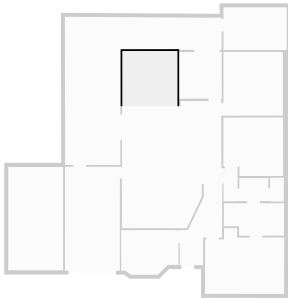
WIDTH: 1.83 m • LENGTH: 1.46 m
AREA: 2.67 m² • PERIMETER: 6.58 m



FLOORS: 1

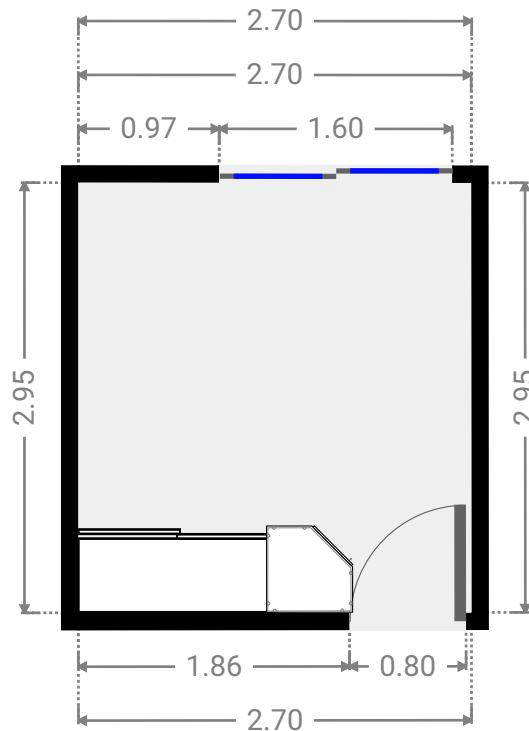
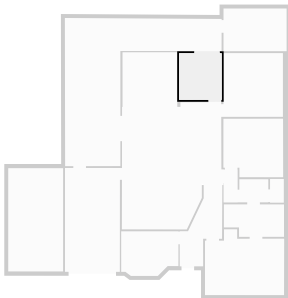
▼ Kitchen
Ground Floor

WIDTH: 3.46 m • LENGTH: 3.37 m
AREA: 11.65 m² • PERIMETER: 13.66 m



▼ Laundry Room
Ground Floor

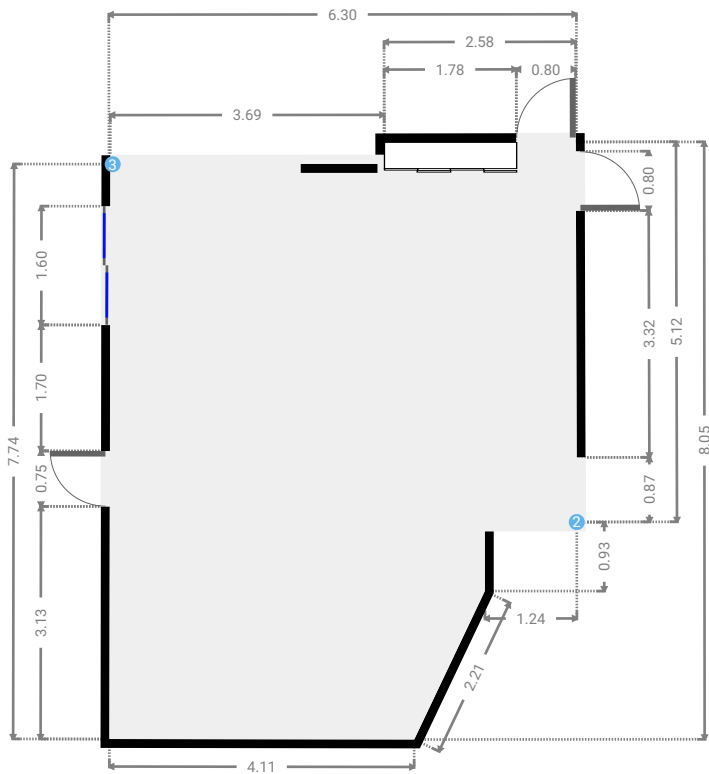
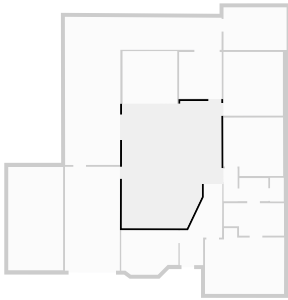
WIDTH: 2.70 m • LENGTH: 2.95 m
AREA: 7.97 m² • PERIMETER: 11.30 m



FLOORS: 1

▼ Living Room Ground Floor

WIDTH: 6.30 m • LENGTH: 8.05 m
AREA: 44.90 m² • PERIMETER: 27.91 m



▼ Living Room/Ground Floor

3 OPENING

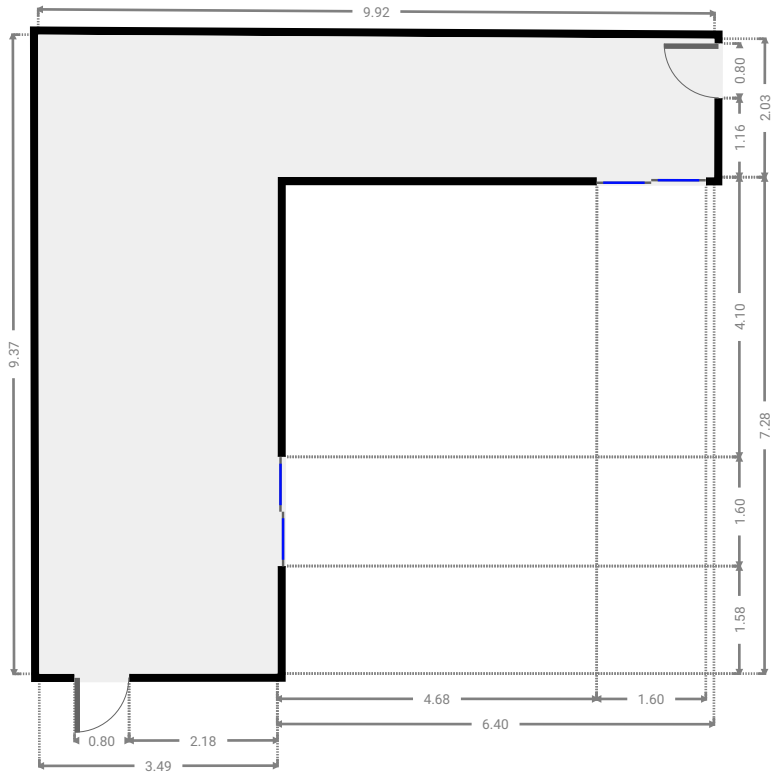
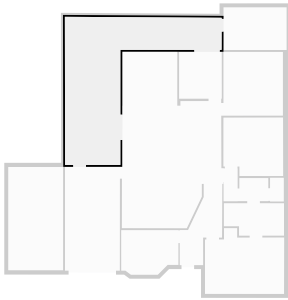
Height
0.00 m



FLOORS: 1

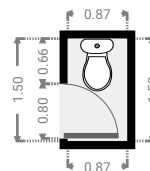
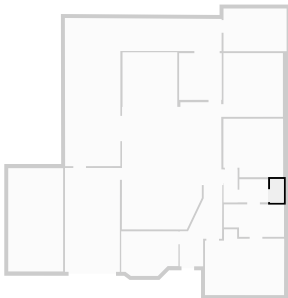
▼ Other
Ground Floor

WIDTH: 9.91 m • LENGTH: 9.37 m
AREA: 45.88 m² • PERIMETER: 38.49 m



▼ Toilet
Ground Floor

WIDTH: 0.87 m • LENGTH: 1.50 m
AREA: 1.30 m² • PERIMETER: 4.74 m



▼ **Workshop**
Ground Floor

WIDTH: 3.99 m • LENGTH: 2.70 m
AREA: 10.77 m² • PERIMETER: 13.38 m

