

# 19 Pearson Street

**SUBMITTED BY**

Ray White Rockhampton Casey  
stockers@cqoz.com

---

**CREATED ON**

2022-08-31

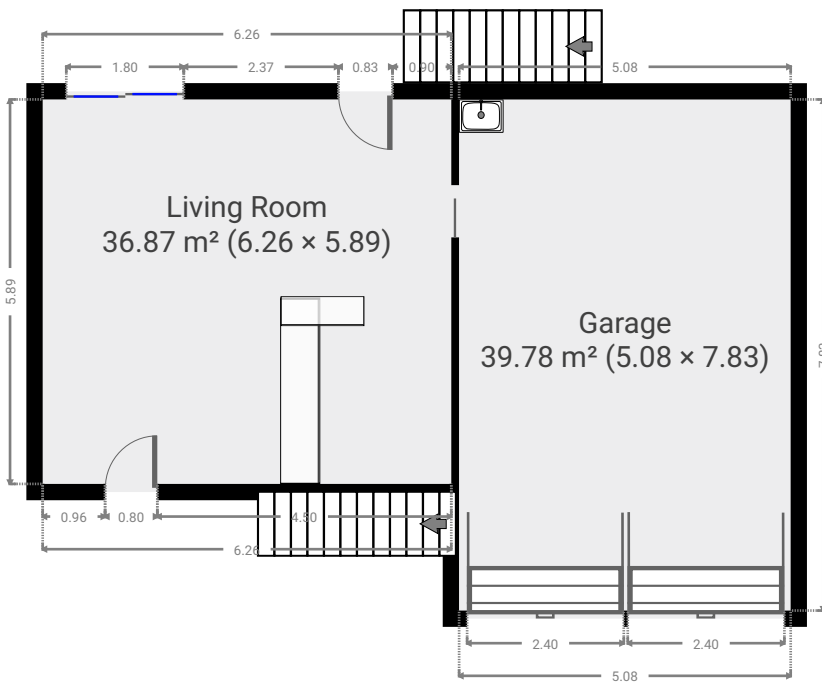
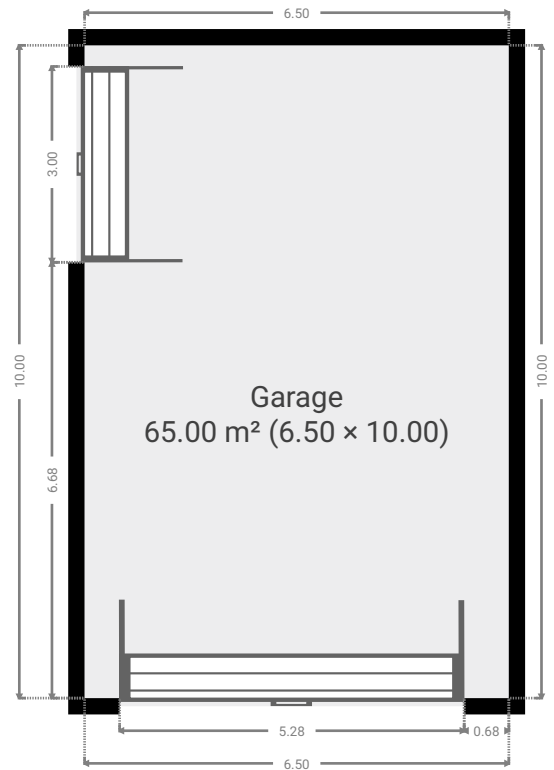
---

**Floors**

2

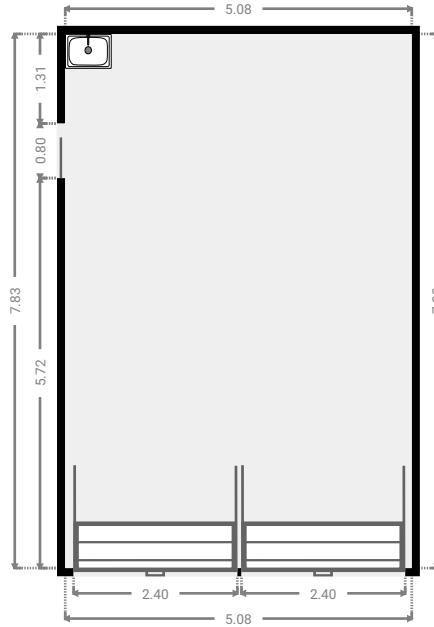
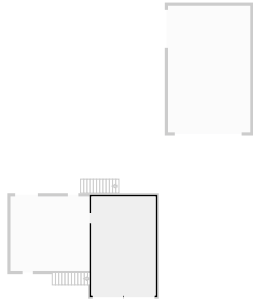
---

▼ Ground Floor



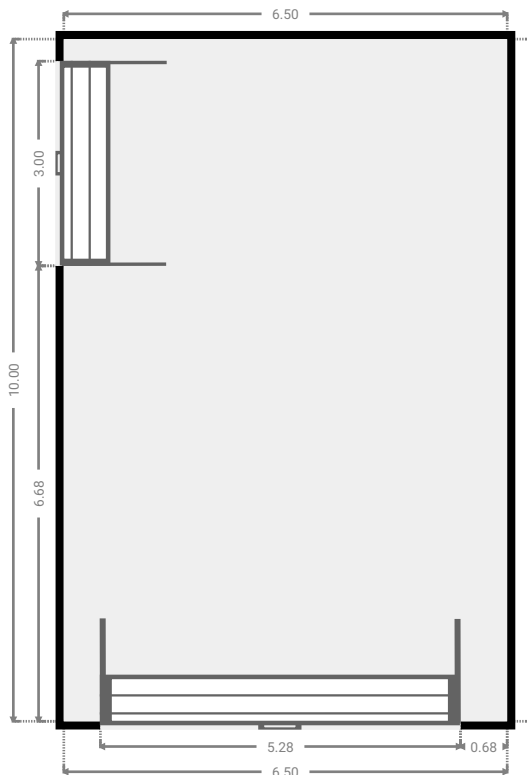
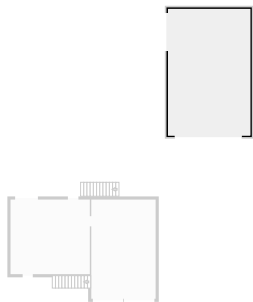
▼ **Garage**  
Ground Floor

WIDTH: 5.08 m • LENGTH: 7.83 m  
AREA: 39.78 m<sup>2</sup> • PERIMETER: 25.82 m



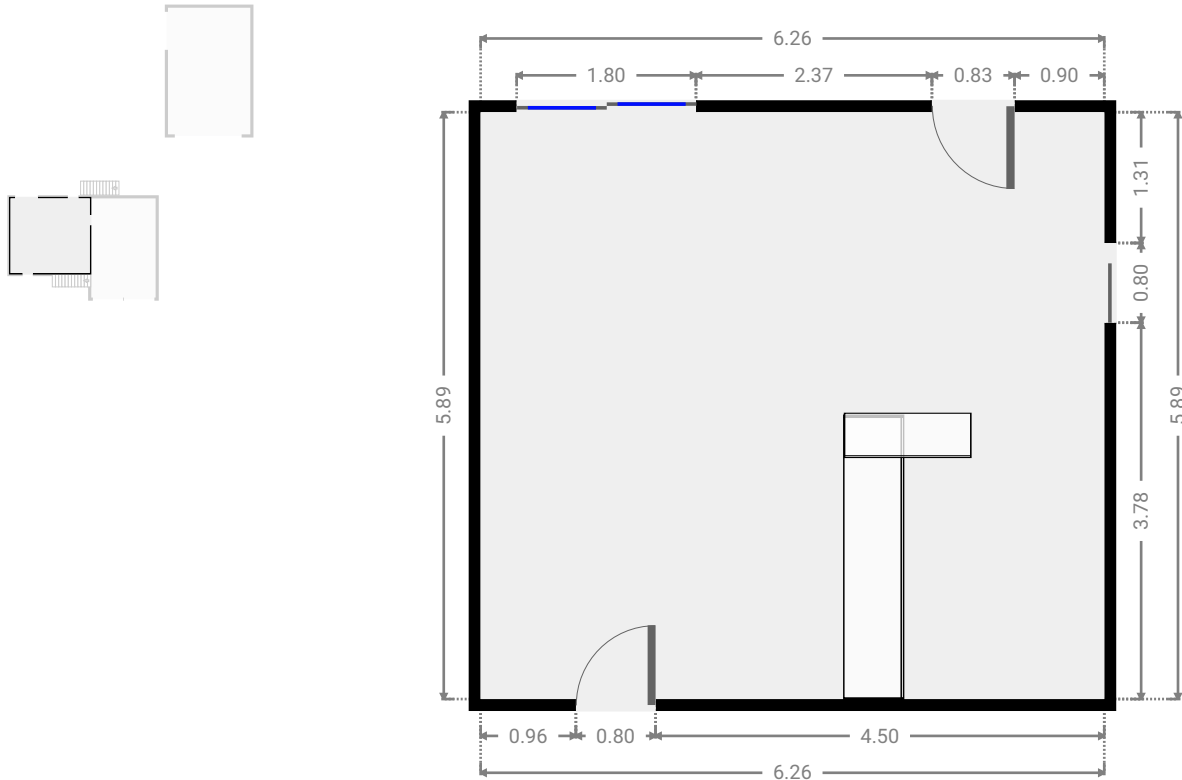
▼ **Garage**  
Ground Floor

WIDTH: 6.50 m • LENGTH: 10.00 m  
AREA: 65.00 m<sup>2</sup> • PERIMETER: 33.00 m

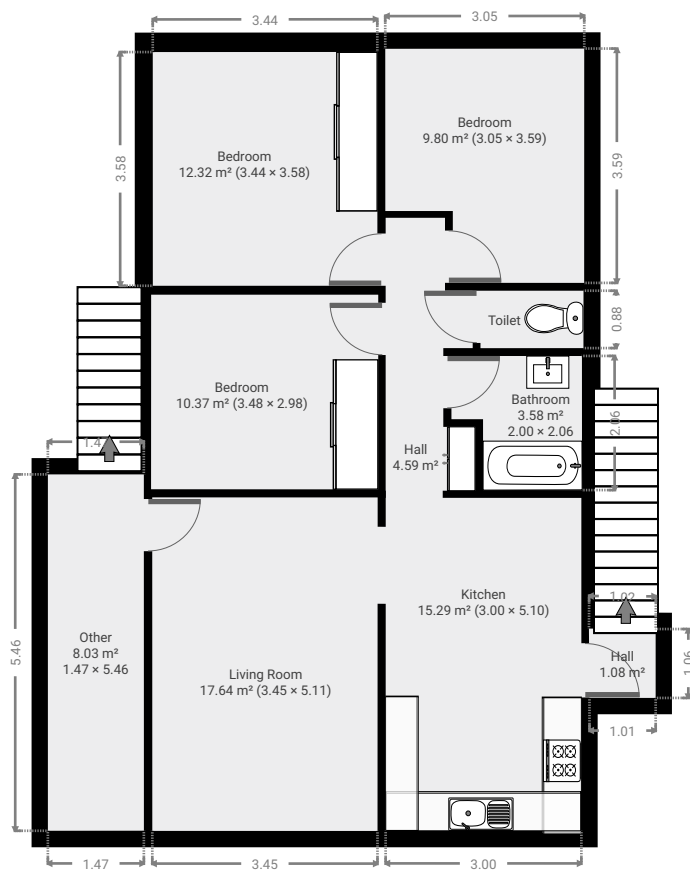


## ▼ Living Room Ground Floor

WIDTH: 6.26 m • LENGTH: 5.89 m  
AREA: 36.87 m<sup>2</sup> • PERIMETER: 24.30 m

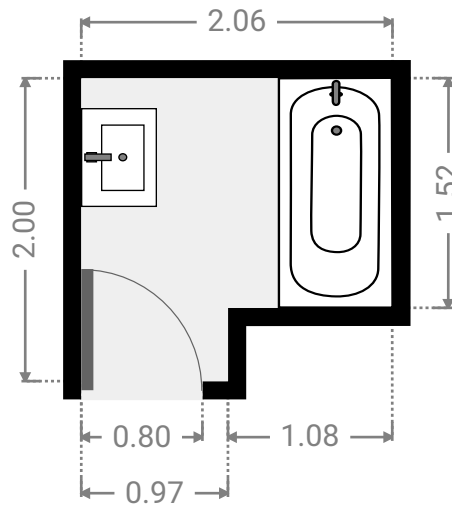
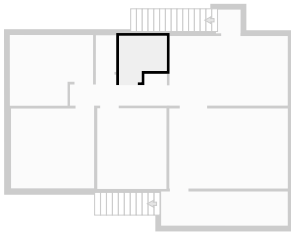


▼ 1st Floor



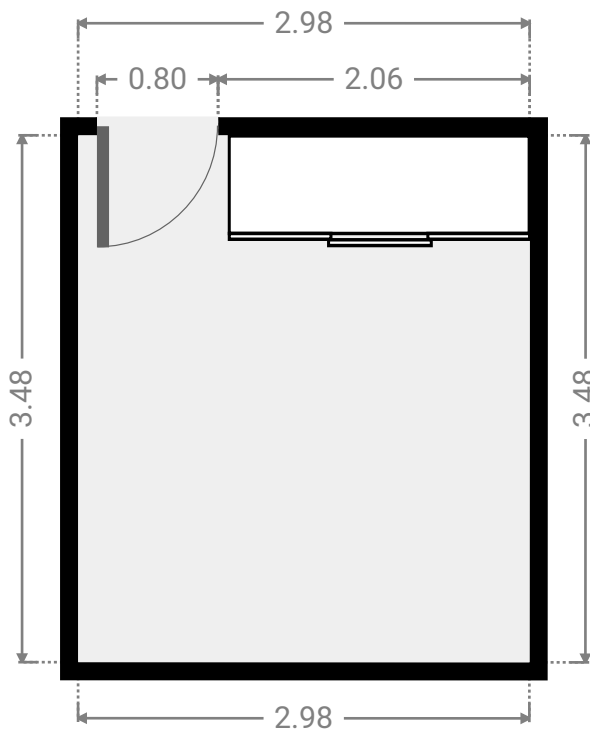
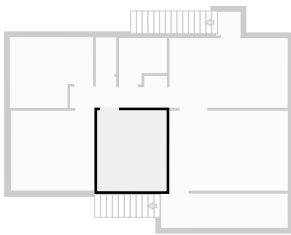
▼ **Bathroom**  
1st Floor

WIDTH: 2.06 m • LENGTH: 2.00 m  
AREA: 3.58 m<sup>2</sup> • PERIMETER: 8.11 m



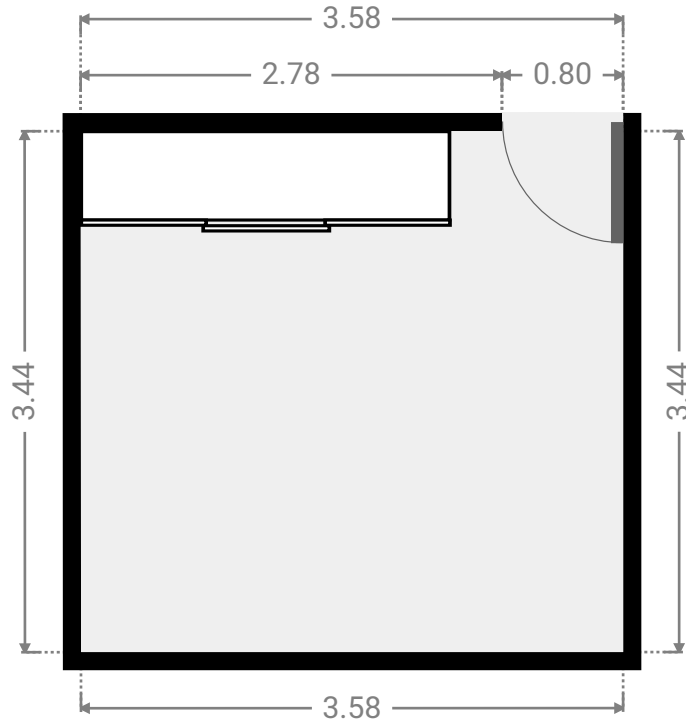
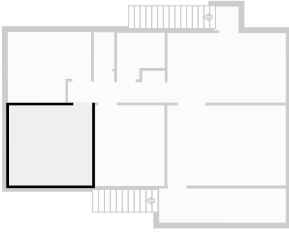
▼ **Bedroom**  
1st Floor

WIDTH: 2.98 m • LENGTH: 3.48 m  
AREA: 10.37 m<sup>2</sup> • PERIMETER: 12.92 m



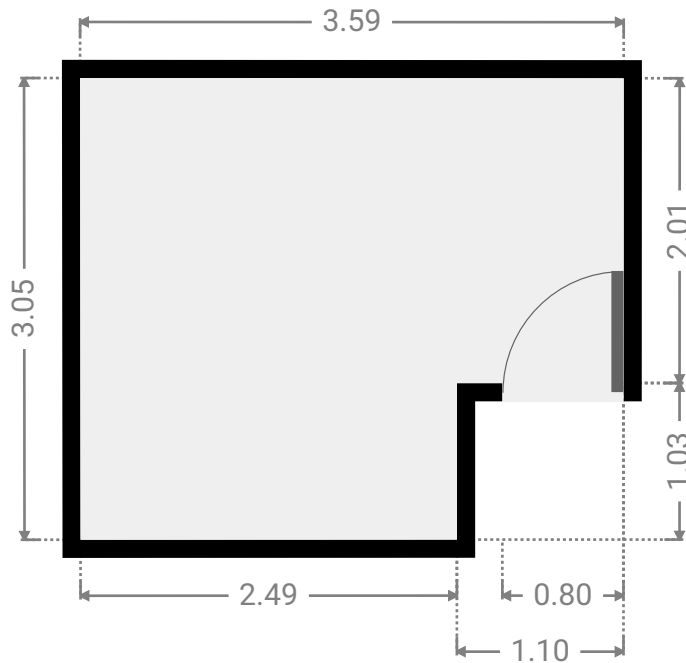
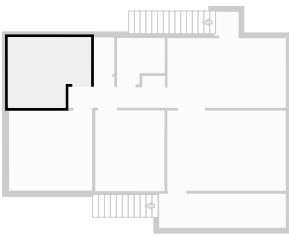
▼ **Bedroom**  
1st Floor

WIDTH: 3.58 m • LENGTH: 3.44 m  
AREA: 12.32 m<sup>2</sup> • PERIMETER: 14.04 m



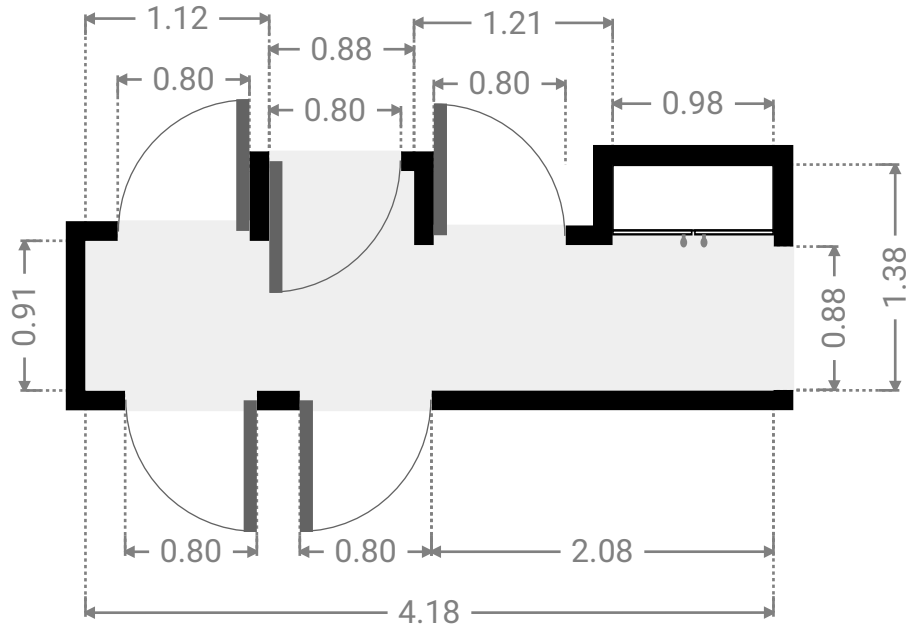
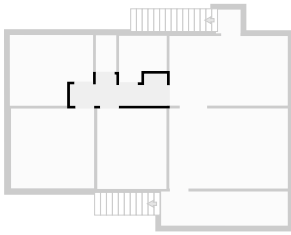
▼ **Bedroom**  
1st Floor

WIDTH: 3.59 m • LENGTH: 3.05 m  
AREA: 9.80 m<sup>2</sup> • PERIMETER: 13.27 m



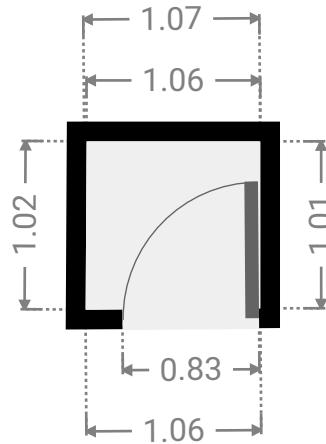
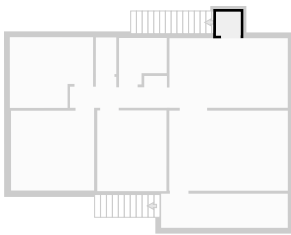
▼ **Hall**  
1st Floor

WIDTH: 4.18 m • LENGTH: 1.37 m  
AREA: 4.59 m<sup>2</sup> • PERIMETER: 12.00 m



▼ **Hall**  
1st Floor

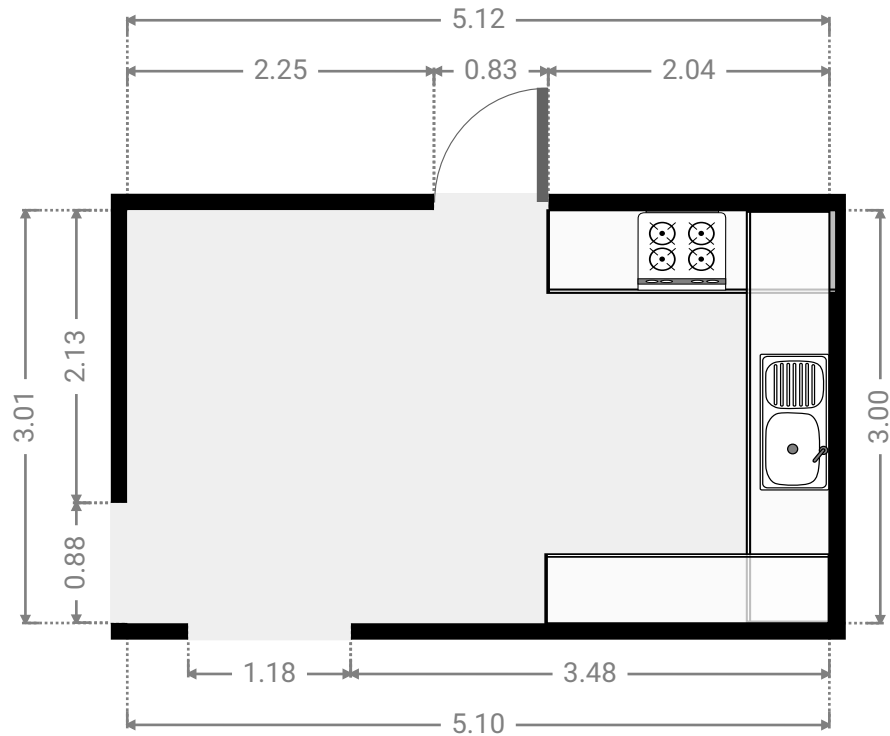
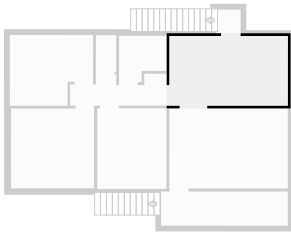
WIDTH: 1.07 m • LENGTH: 1.02 m  
AREA: 1.08 m<sup>2</sup> • PERIMETER: 4.15 m





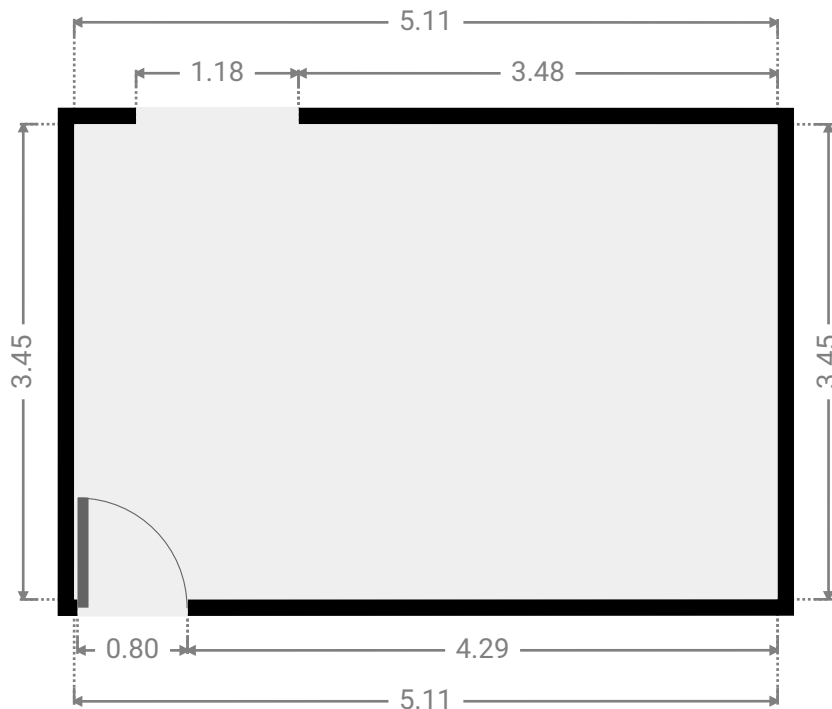
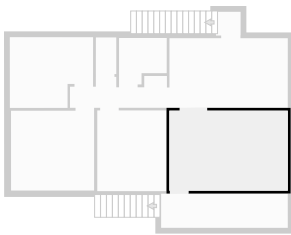
▼ **Kitchen**  
1st Floor

WIDTH: 5.10 m • LENGTH: 3.00 m  
AREA: 15.29 m<sup>2</sup> • PERIMETER: 16.20 m



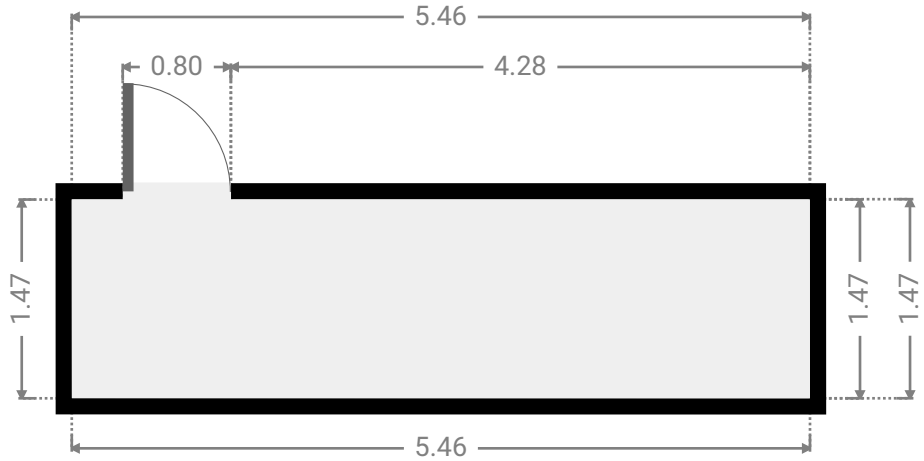
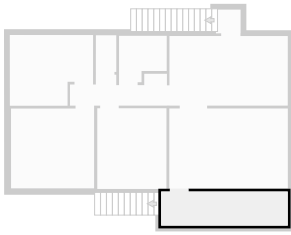
▼ **Living Room**  
1st Floor

WIDTH: 5.11 m • LENGTH: 3.45 m  
AREA: 17.64 m<sup>2</sup> • PERIMETER: 17.12 m



▼ **Other**  
1st Floor

WIDTH: 5.46 m • LENGTH: 1.47 m  
AREA: 8.03 m<sup>2</sup> • PERIMETER: 13.86 m



▼ **Toilet**  
1st Floor

WIDTH: 0.88 m • LENGTH: 1.58 m  
AREA: 1.39 m<sup>2</sup> • PERIMETER: 4.92 m

