

19 Florida Crescent

SUBMITTED BY

Ray White Rockhampton Casey
stockers@cqoz.com

CREATED ON

2021-11-16

Floors

1

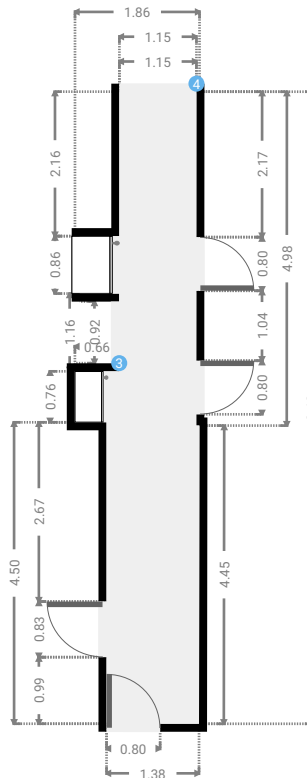
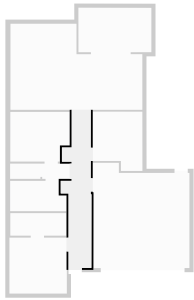
▼ Ground Floor



FLOORS: 1

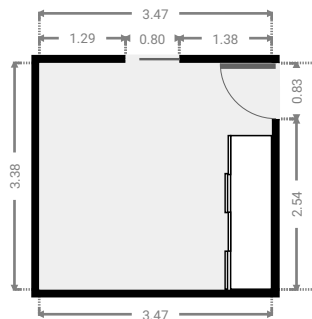
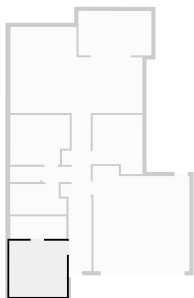
▼ Hall Ground Floor

WIDTH: 1.86 m • LENGTH: 9.43 m
AREA: 12.90 m² • PERIMETER: 23.76 m



▼ Master Bedroom Ground Floor

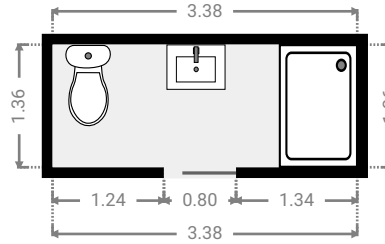
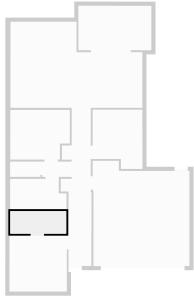
WIDTH: 3.47 m • LENGTH: 3.38 m
AREA: 11.72 m² • PERIMETER: 13.70 m



FLOORS: 1

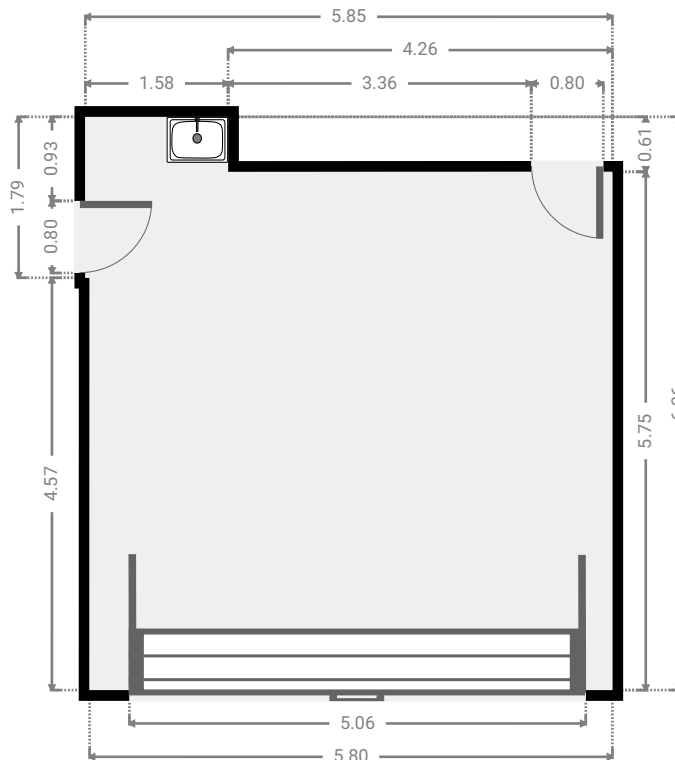
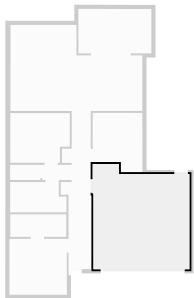
▼ Bathroom
Ground Floor

WIDTH: 3.38 m • LENGTH: 1.36 m
AREA: 4.60 m² • PERIMETER: 9.48 m



▼ Garage
Ground Floor

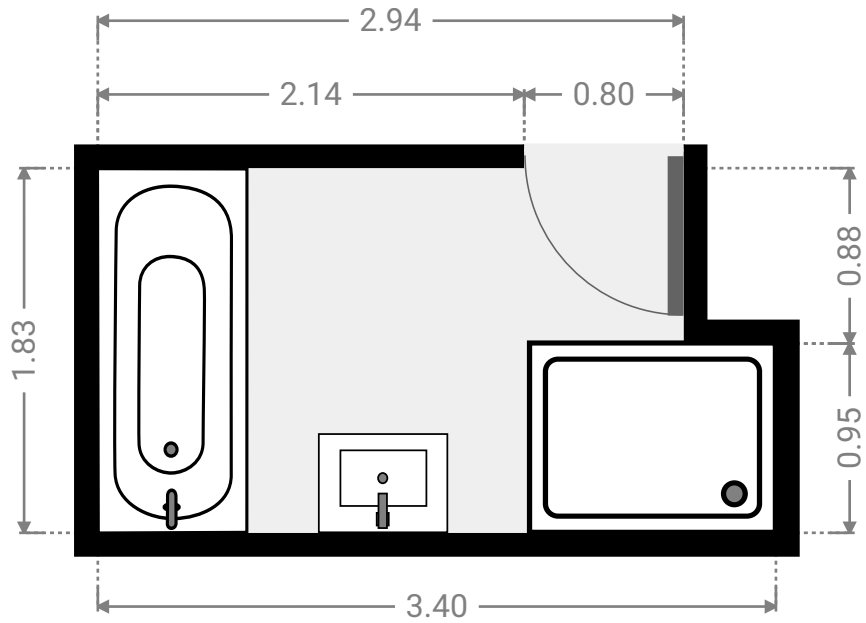
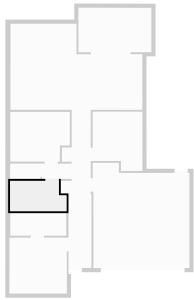
WIDTH: 5.85 m • LENGTH: 6.36 m
AREA: 34.37 m² • PERIMETER: 24.42 m



FLOORS: 1

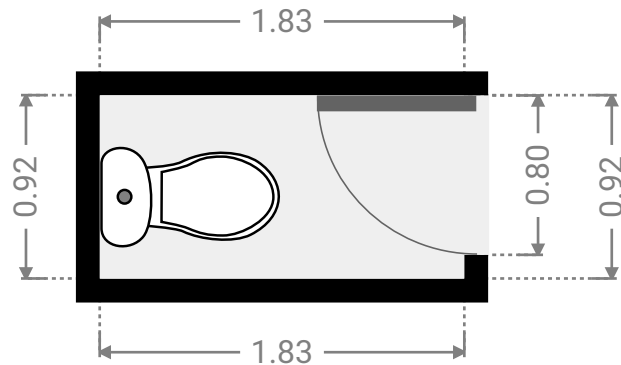
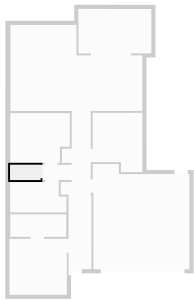
▼ Bathroom
Ground Floor

WIDTH: 3.40 m • LENGTH: 1.83 m
AREA: 5.82 m² • PERIMETER: 10.47 m



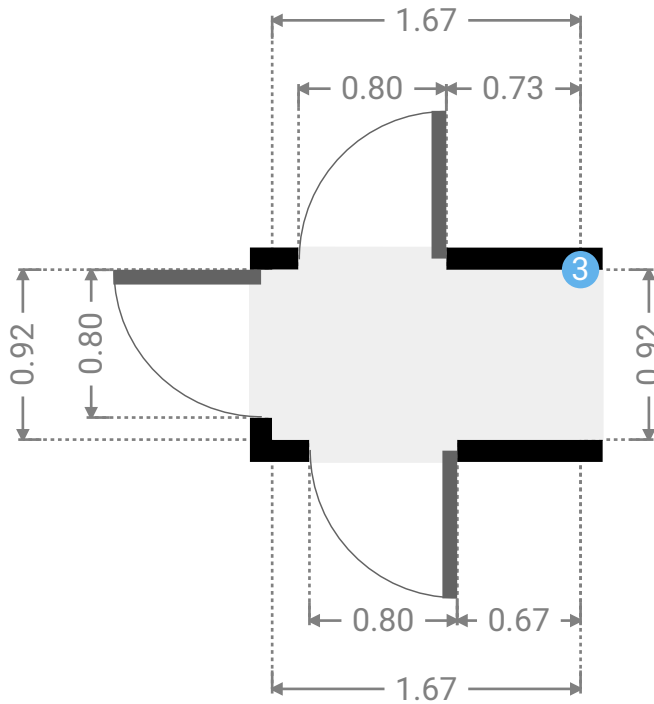
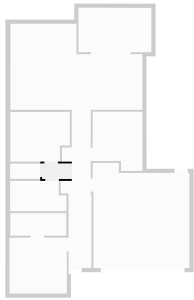
▼ Toilet
Ground Floor

WIDTH: 1.83 m • LENGTH: 0.92 m
AREA: 1.68 m² • PERIMETER: 5.50 m



▼ Hall Ground Floor

WIDTH: 1.67 m • LENGTH: 0.92 m
AREA: 1.54 m² • PERIMETER: 5.18 m



▼ Hall/Ground Floor

3 OPENING

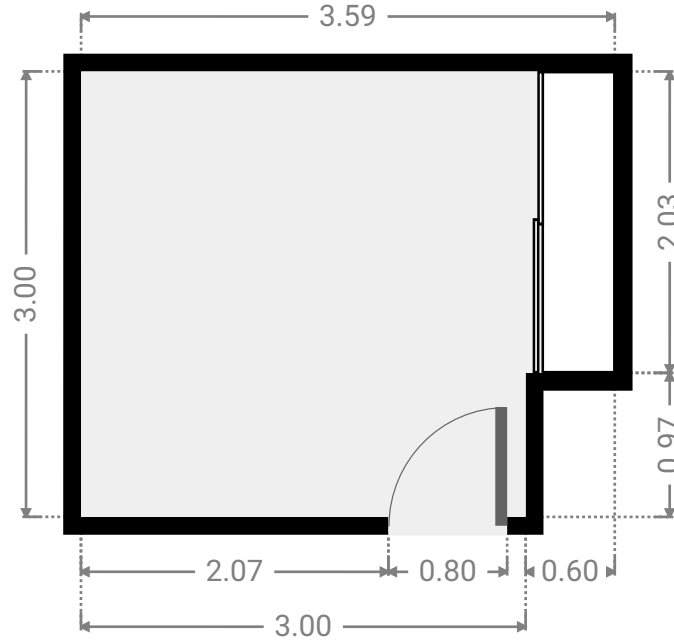
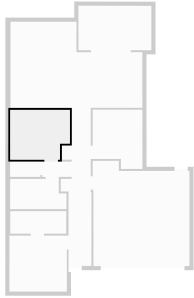
Height
0.00 m



FLOORS: 1

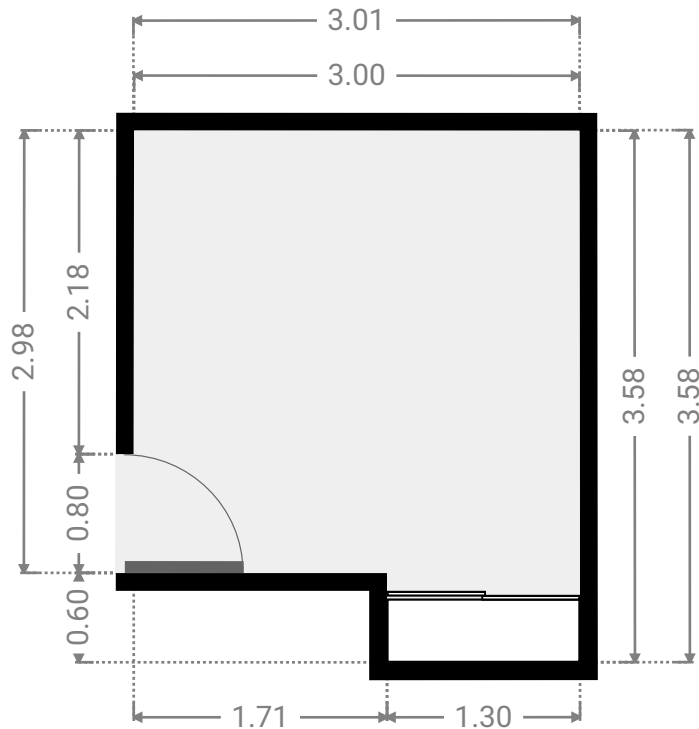
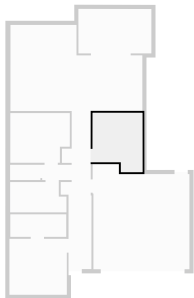
▼ **Bedroom**
Ground Floor

WIDTH: 3.60 m • LENGTH: 3.00 m
AREA: 10.20 m² • PERIMETER: 13.19 m



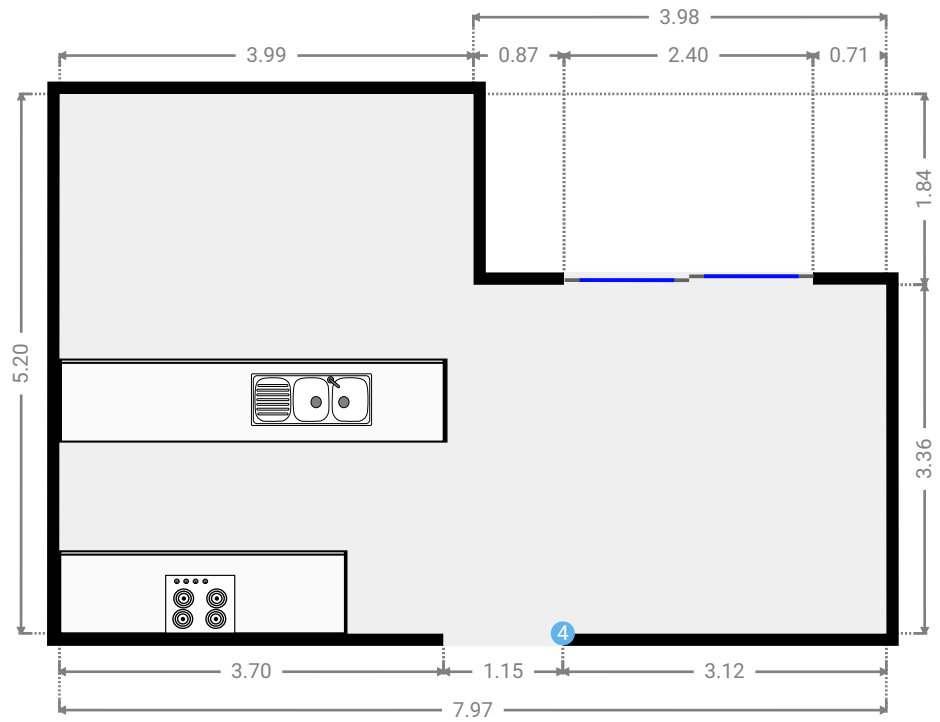
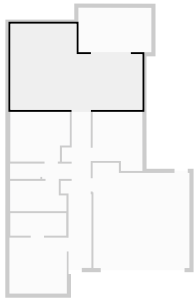
▼ **Bedroom**
Ground Floor

WIDTH: 3.01 m • LENGTH: 3.58 m
AREA: 9.73 m² • PERIMETER: 13.17 m



▼ Kitchen Ground Floor

WIDTH: 7.97 m • LENGTH: 5.20 m
AREA: 34.13 m² • PERIMETER: 26.34 m



▼ Kitchen/Ground Floor

4 OPENING

Height
0.00 m



▼ Other
Ground Floor

WIDTH: 4.41 m • LENGTH: 2.69 m
AREA: 11.83 m² • PERIMETER: 14.18 m

