

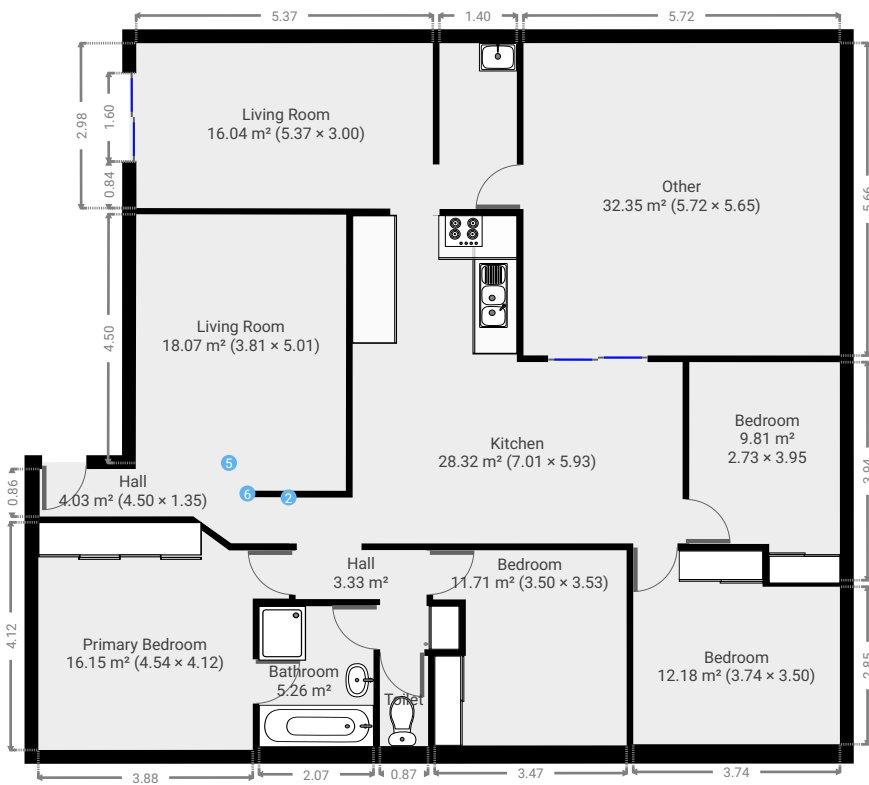
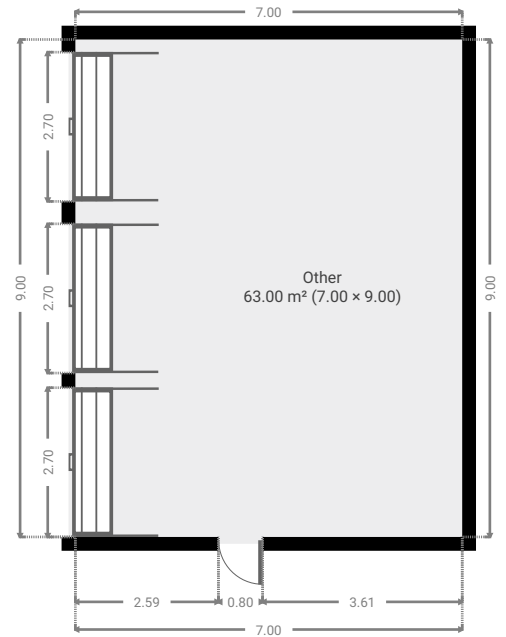
19 Caporn Road

SUBMITTED BY
Ray White Rockhampton Casey
stockers@cqoz.com

CREATED ON
2022-07-22

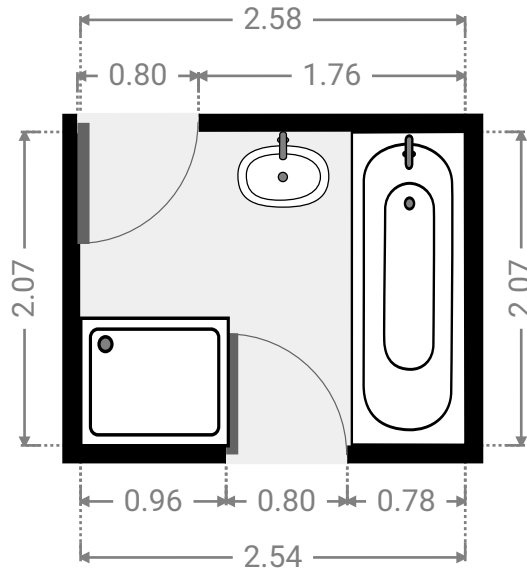
Floors
1

▼ Ground Floor



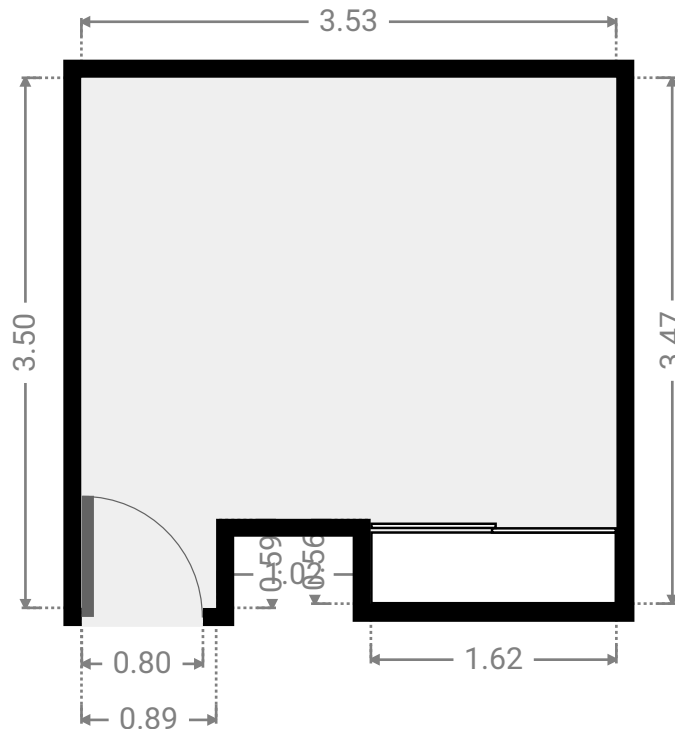
▼ **Bathroom**
Ground Floor

WIDTH: 2.54 m • LENGTH: 2.07 m
AREA: 5.26 m² • PERIMETER: 9.22 m



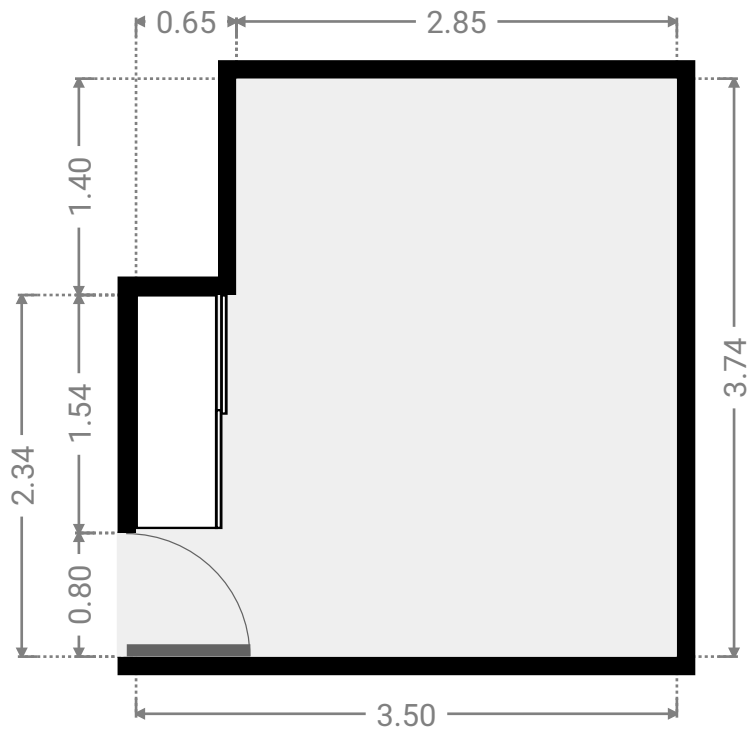
▼ **Bedroom**
Ground Floor

WIDTH: 3.53 m • LENGTH: 3.50 m
AREA: 11.71 m² • PERIMETER: 15.19 m



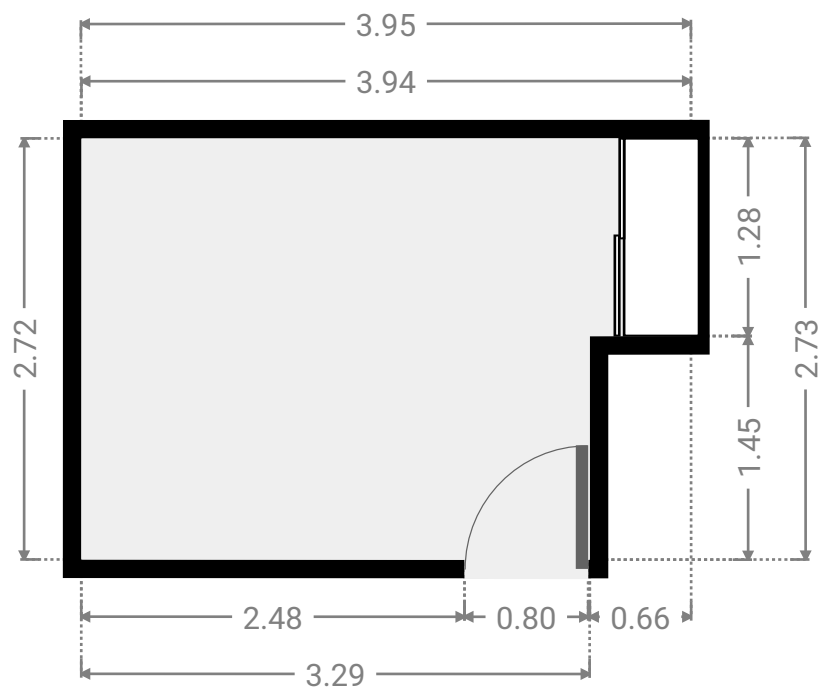
▼ Bedroom Ground Floor

WIDTH: 3.50 m • LENGTH: 3.74 m
AREA: 12.18 m² • PERIMETER: 14.48 m



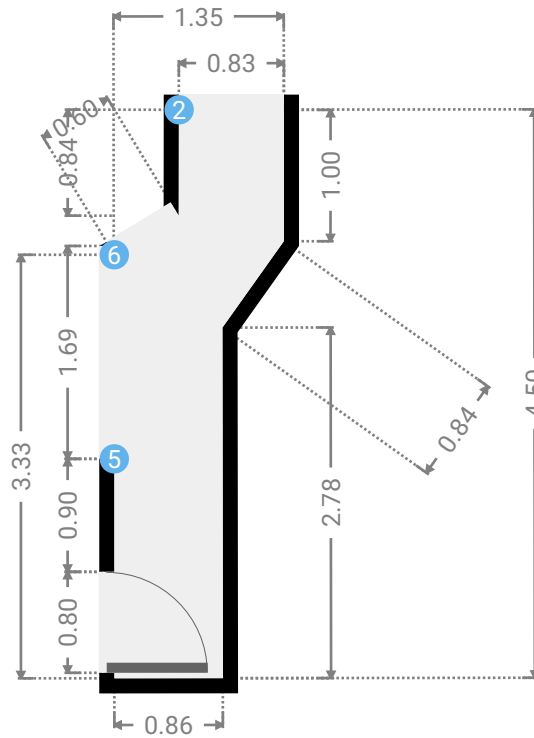
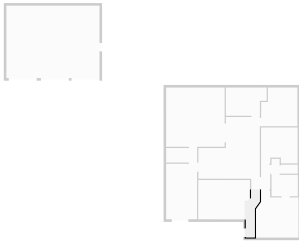
▼ Bedroom Ground Floor

WIDTH: 3.95 m • LENGTH: 2.73 m
AREA: 9.81 m² • PERIMETER: 13.34 m



▼ **Hall**
Ground Floor

WIDTH: 1.35 m • LENGTH: 4.50 m
AREA: 4.03 m² • PERIMETER: 11.14 m



▼ **Hall/Ground Floor**

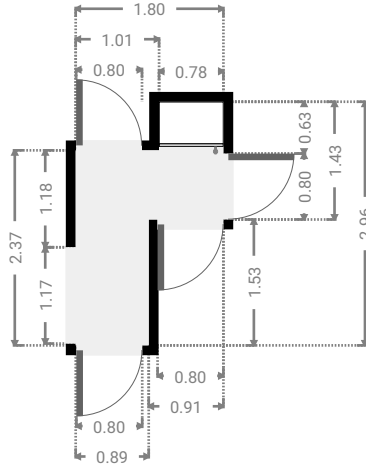
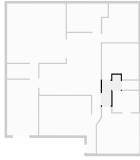
2 OPENING

Height
0.00 m



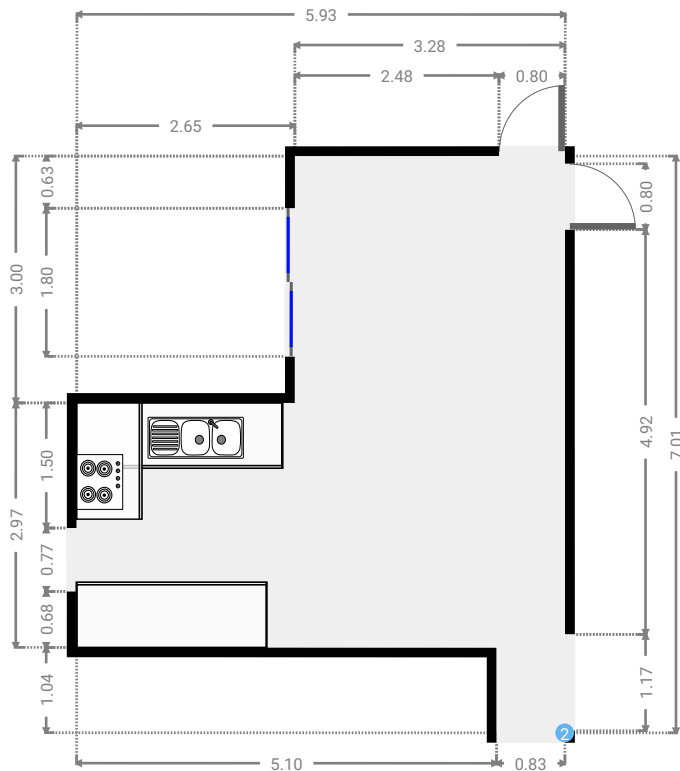
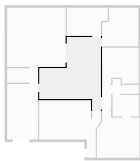
▼ Hall Ground Floor

WIDTH: 1.80 m • LENGTH: 2.96 m
AREA: 3.33 m² • PERIMETER: 9.51 m



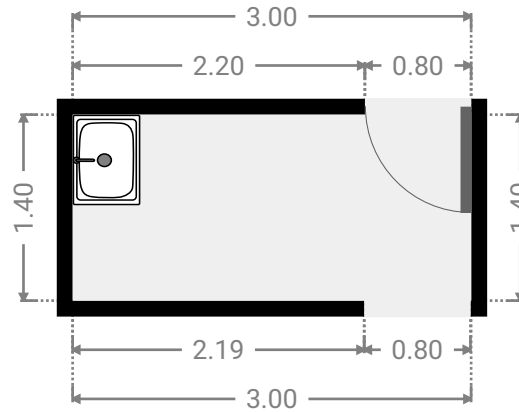
▼ Kitchen Ground Floor

WIDTH: 5.93 m • LENGTH: 7.01 m
AREA: 28.32 m² • PERIMETER: 25.88 m



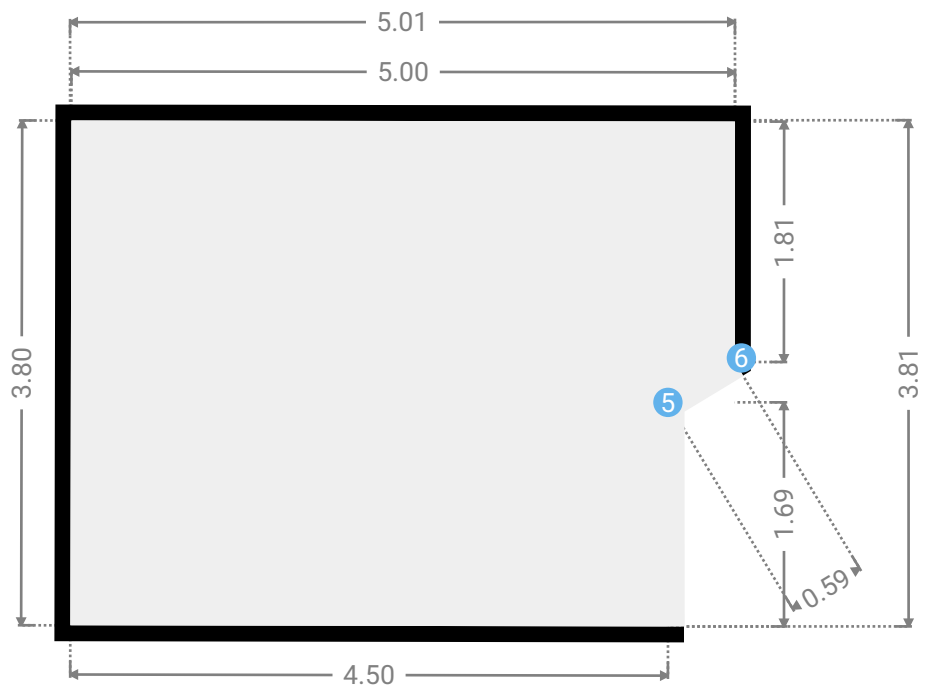
▼ Laundry Room Ground Floor

WIDTH: 3.00 m • LENGTH: 1.40 m
AREA: 4.20 m² • PERIMETER: 8.80 m



▼ Living Room Ground Floor

WIDTH: 5.01 m • LENGTH: 3.81 m
AREA: 18.07 m² • PERIMETER: 17.38 m



▼ Living Room/Ground Floor

5 OPENING

Height
0.00 m



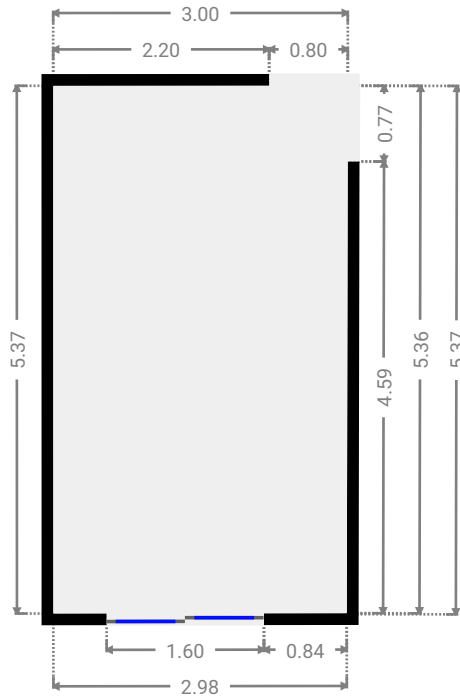
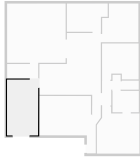
6 OPENING

Height
0.00 m



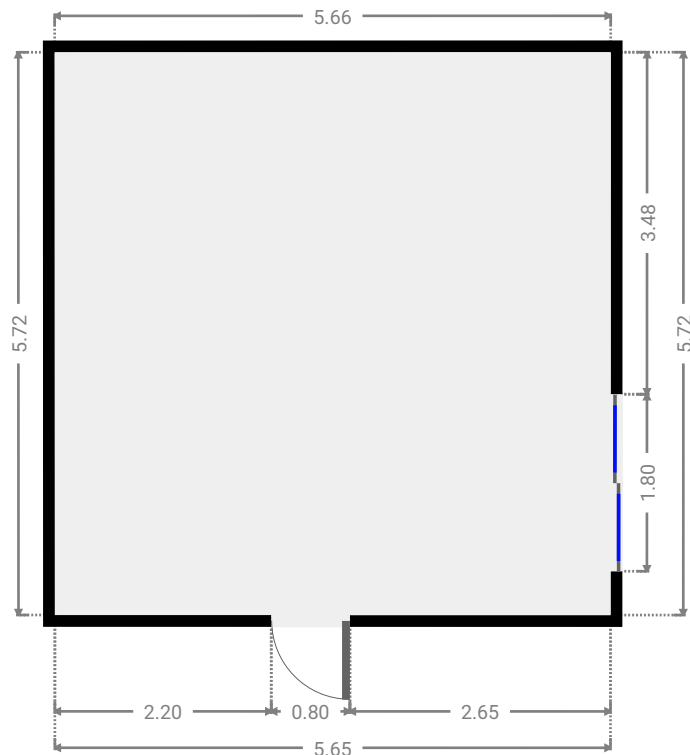
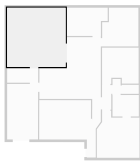
▼ Living Room
Ground Floor

WIDTH: 3.00 m • LENGTH: 5.37 m
AREA: 16.04 m² • PERIMETER: 16.71 m



▼ Other
Ground Floor

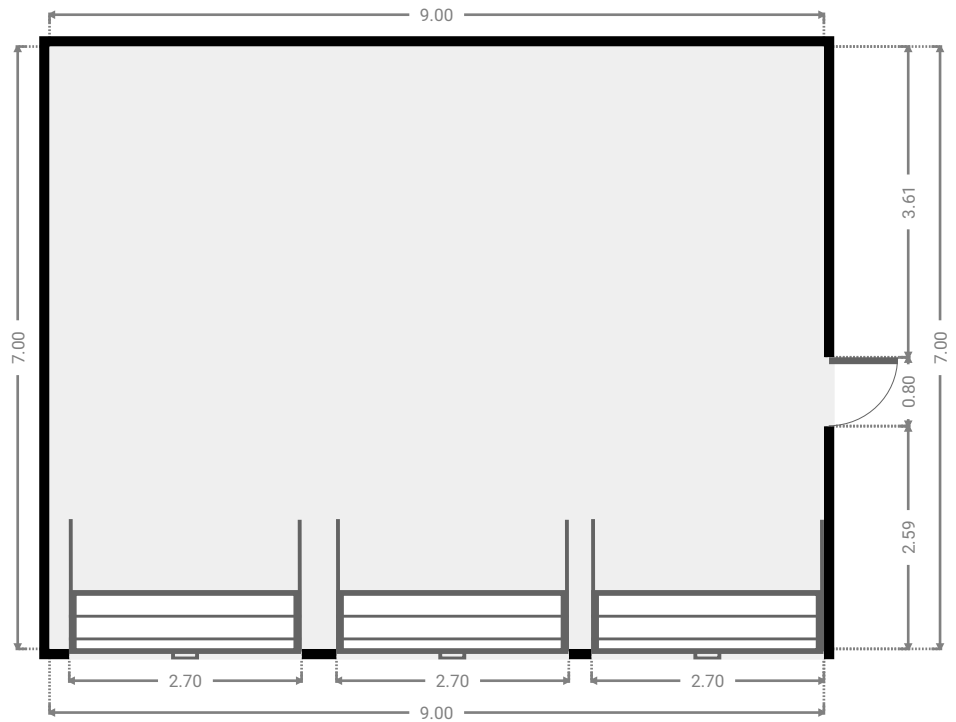
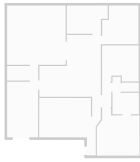
WIDTH: 5.65 m • LENGTH: 5.72 m
AREA: 32.35 m² • PERIMETER: 22.75 m



FLOORS: 1

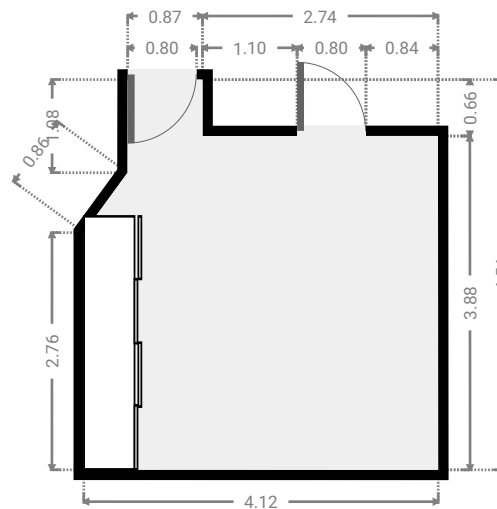
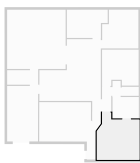
▼ Other
Ground Floor

WIDTH: 9.00 m • LENGTH: 7.00 m
AREA: 63.00 m² • PERIMETER: 32.00 m



▼ Primary Bedroom
Ground Floor

WIDTH: 4.12 m • LENGTH: 4.54 m
AREA: 16.15 m² • PERIMETER: 16.96 m



▼ Toilet
Ground Floor

WIDTH: 1.63 m • LENGTH: 0.88 m
AREA: 1.42 m² • PERIMETER: 5.01 m

