

# 19 Beaumont Drive

**SUBMITTED BY**

Ray White Rockhampton Casey  
stockers@cqoz.com

---

**CREATED ON**

2022-06-14

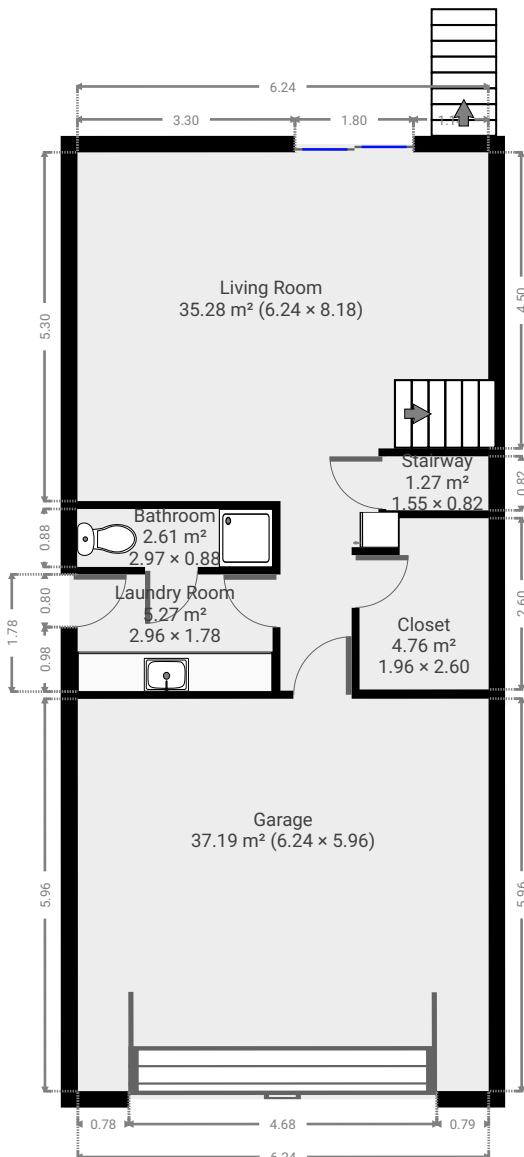
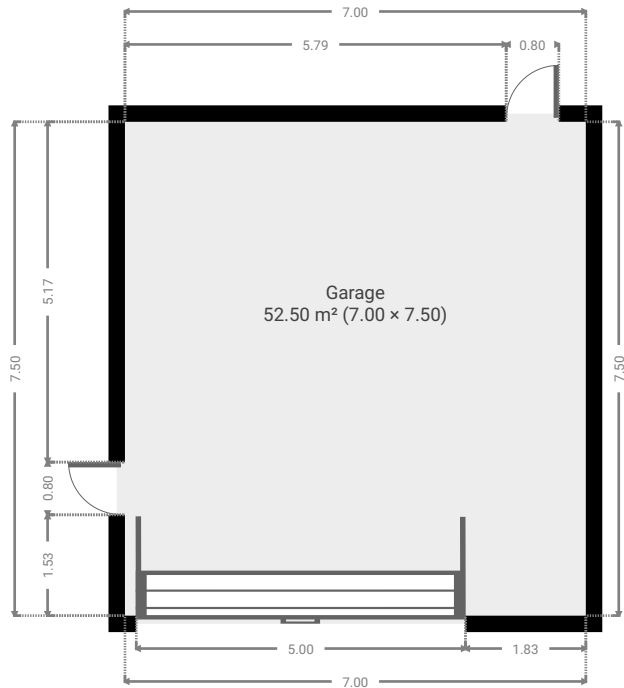
---

**Floors**

2

---

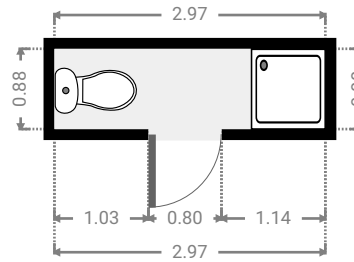
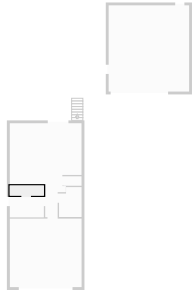
▼ Ground Floor



FLOORS: 2

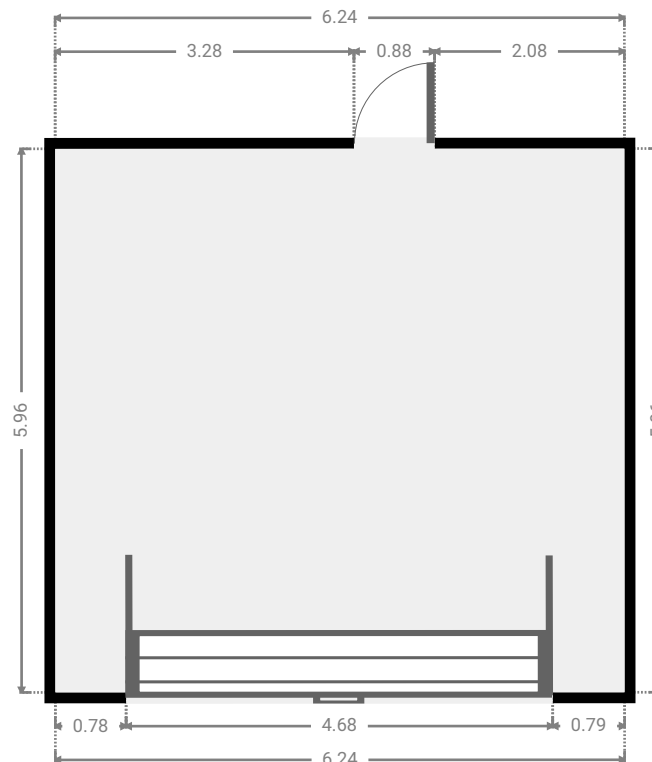
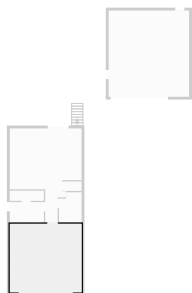
▼ Bathroom  
Ground Floor

WIDTH: 2.97 m • LENGTH: 0.88 m  
AREA: 2.61 m<sup>2</sup> • PERIMETER: 7.70 m



▼ Garage  
Ground Floor

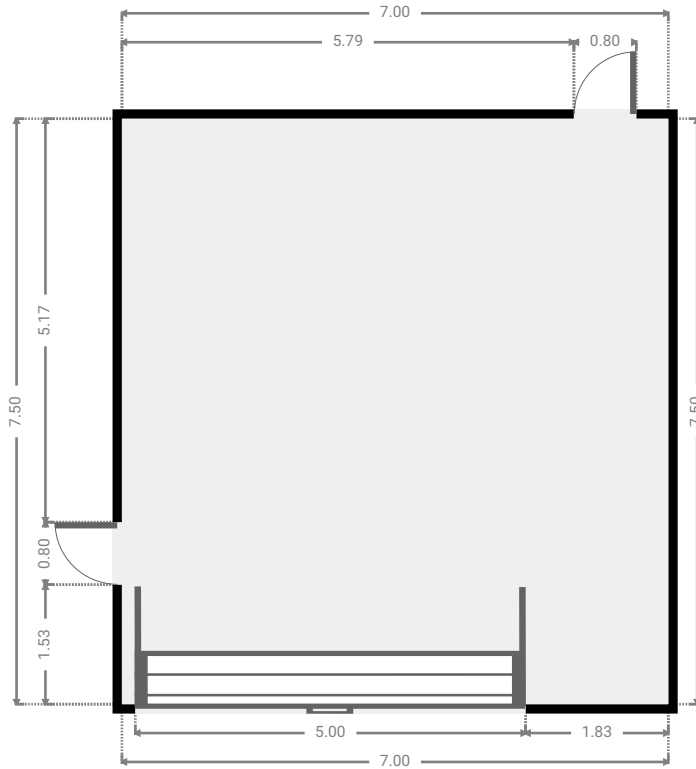
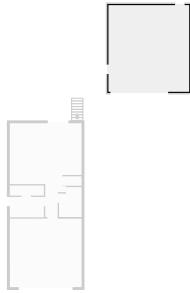
WIDTH: 6.24 m • LENGTH: 5.96 m  
AREA: 37.19 m<sup>2</sup> • PERIMETER: 24.40 m



FLOORS: 2

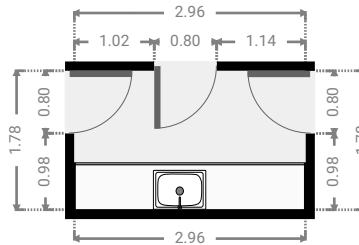
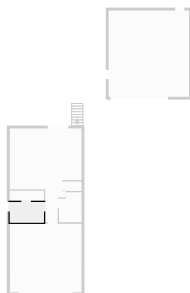
▼ Garage  
Ground Floor

WIDTH: 7.00 m • LENGTH: 7.50 m  
AREA: 52.50 m<sup>2</sup> • PERIMETER: 29.00 m



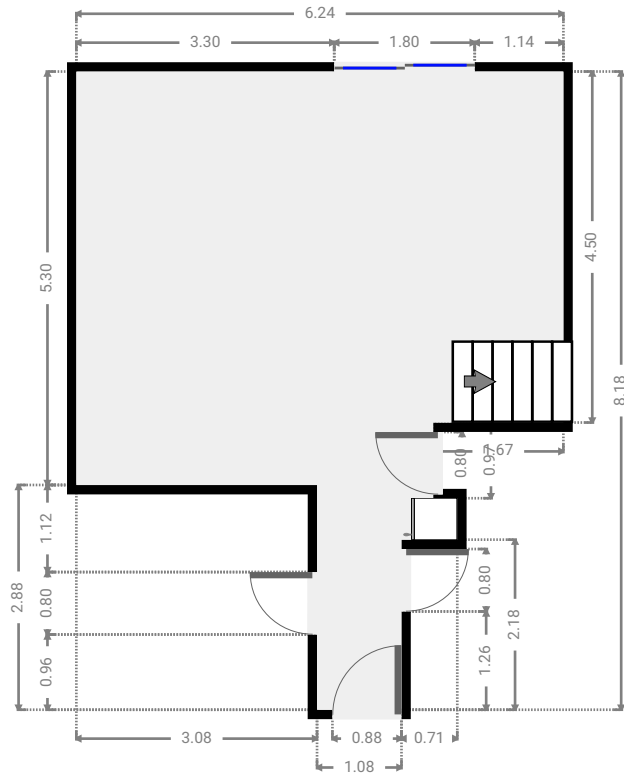
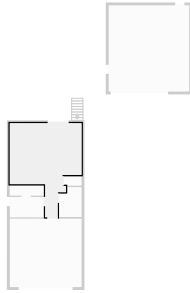
▼ Laundry Room  
Ground Floor

WIDTH: 2.96 m • LENGTH: 1.78 m  
AREA: 5.27 m<sup>2</sup> • PERIMETER: 9.48 m



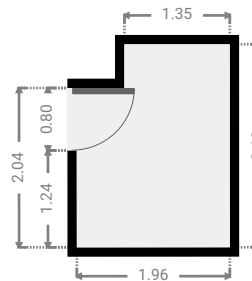
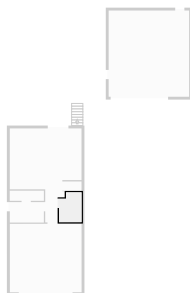
▼ Living Room  
Ground Floor

WIDTH: 6.24 m • LENGTH: 8.18 m  
AREA: 35.28 m<sup>2</sup> • PERIMETER: 29.45 m



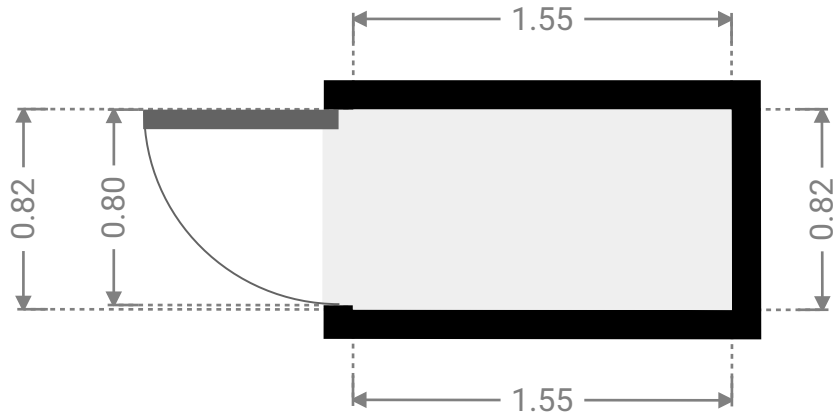
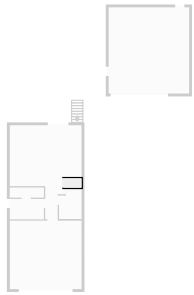
▼ Closet  
Ground Floor

WIDTH: 1.96 m • LENGTH: 2.60 m  
AREA: 4.76 m<sup>2</sup> • PERIMETER: 9.12 m

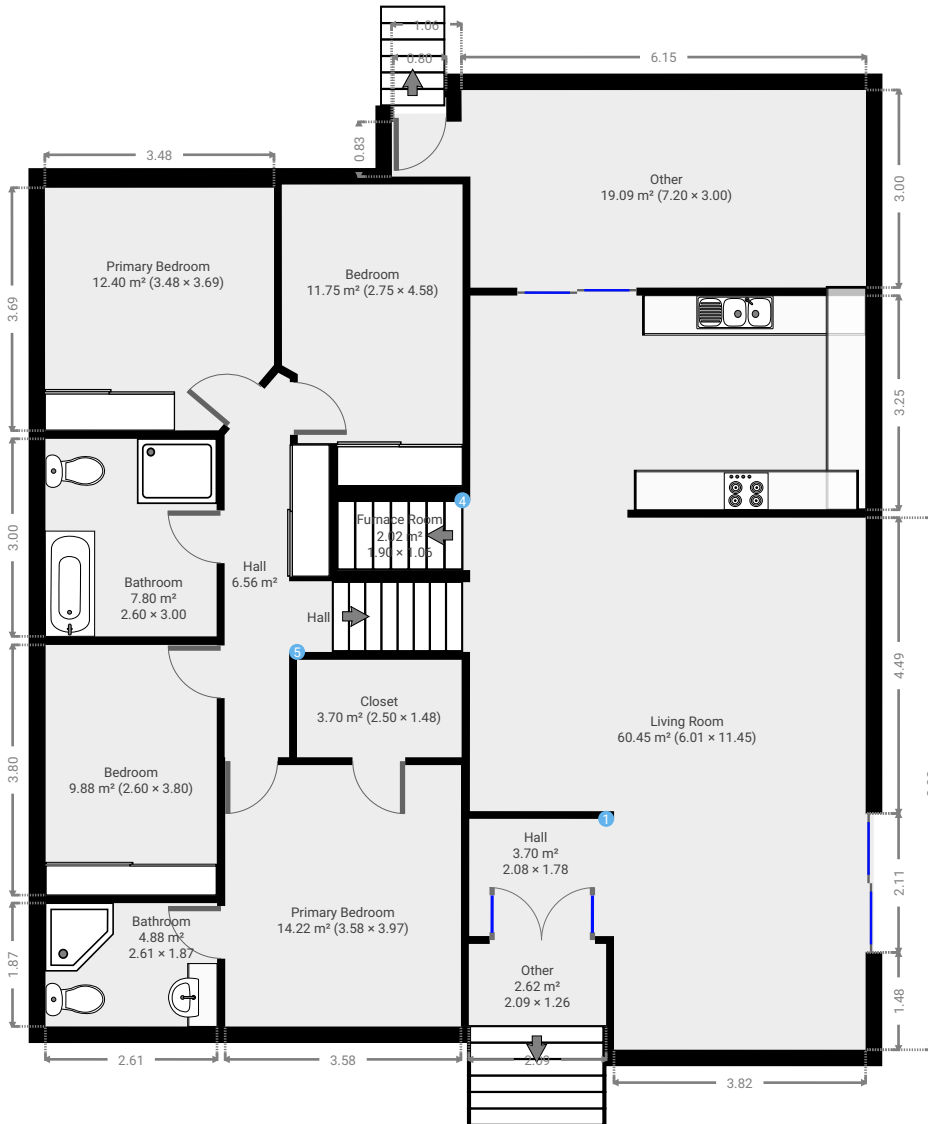


## ▼ Stairway Ground Floor

WIDTH: 1.55 m • LENGTH: 0.82 m  
AREA: 1.27 m<sup>2</sup> • PERIMETER: 4.74 m

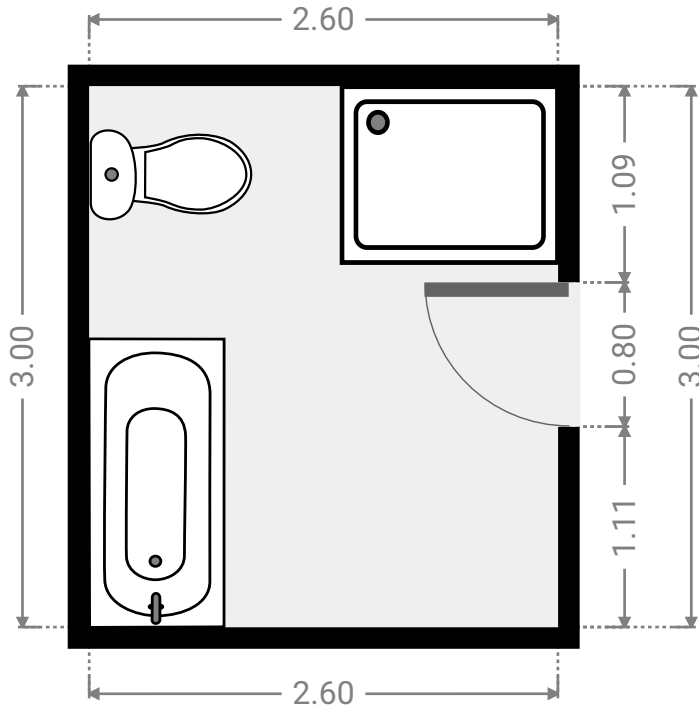
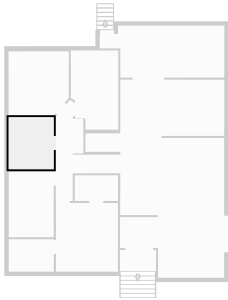


▼ 1st Floor



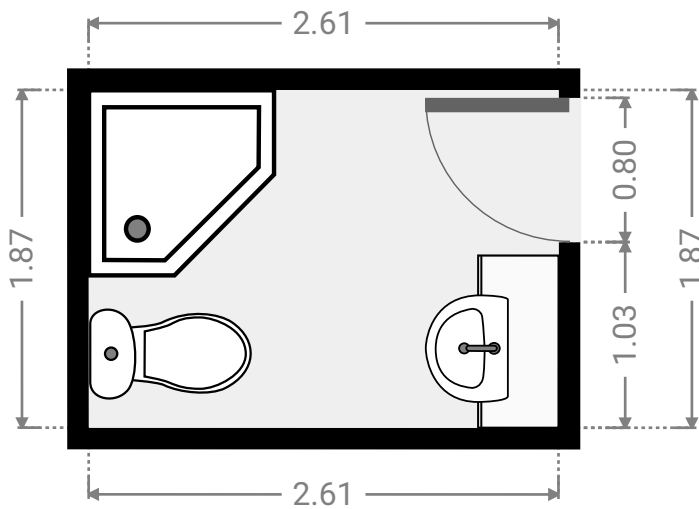
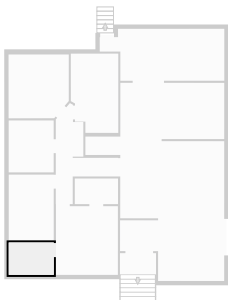
▼ Bathroom  
1st Floor

WIDTH: 2.60 m • LENGTH: 3.00 m  
AREA: 7.80 m<sup>2</sup> • PERIMETER: 11.20 m



▼ Bathroom  
1st Floor

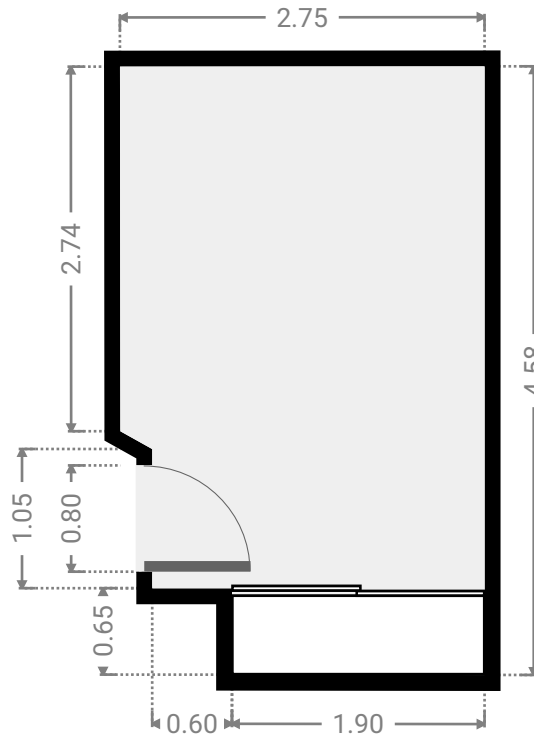
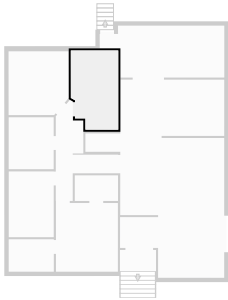
WIDTH: 2.61 m • LENGTH: 1.87 m  
AREA: 4.88 m<sup>2</sup> • PERIMETER: 8.96 m





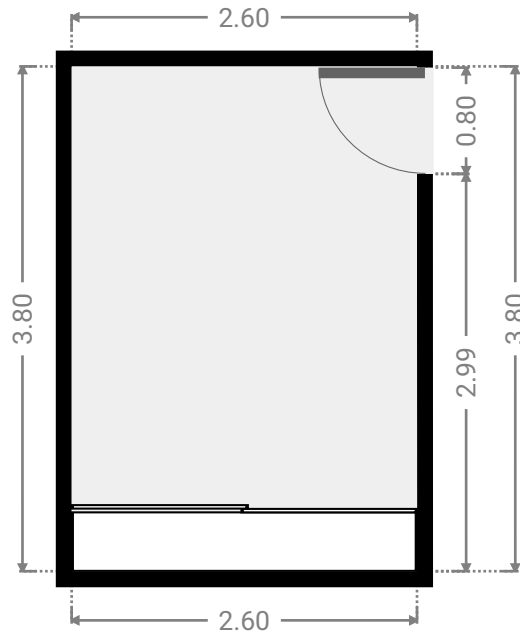
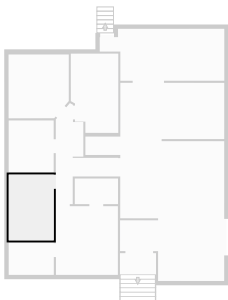
▼ **Bedroom**  
1st Floor

WIDTH: 2.75 m • LENGTH: 4.58 m  
AREA: 11.75 m<sup>2</sup> • PERIMETER: 14.55 m



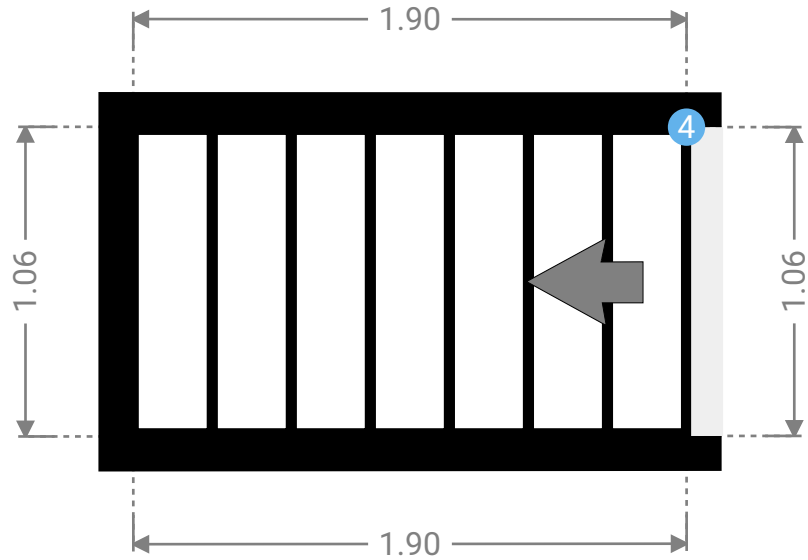
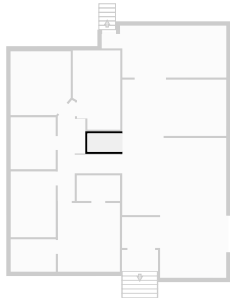
▼ **Bedroom**  
1st Floor

WIDTH: 2.60 m • LENGTH: 3.80 m  
AREA: 9.88 m<sup>2</sup> • PERIMETER: 12.80 m



▼ Furnace Room  
1st Floor

WIDTH: 1.90 m • LENGTH: 1.06 m  
AREA: 2.02 m<sup>2</sup> • PERIMETER: 5.92 m



▼ Furnace Room/1st Floor

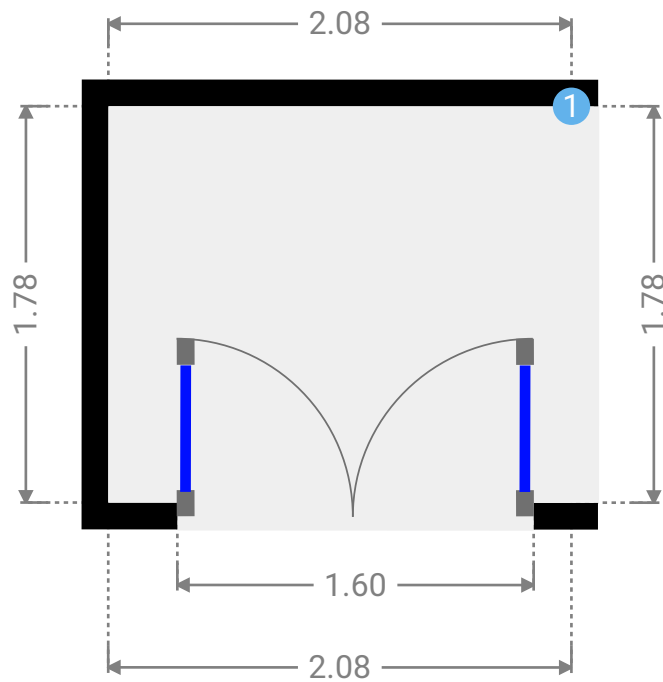
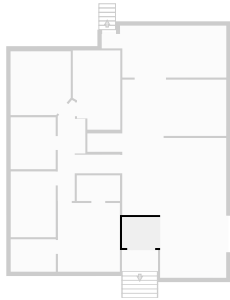
4 OPENING

Height  
0.00 m



## ▼ Hall 1st Floor

WIDTH: 2.08 m • LENGTH: 1.78 m  
AREA: 3.70 m<sup>2</sup> • PERIMETER: 7.72 m



## ▼ Hall/1st Floor

### 1 OPENING

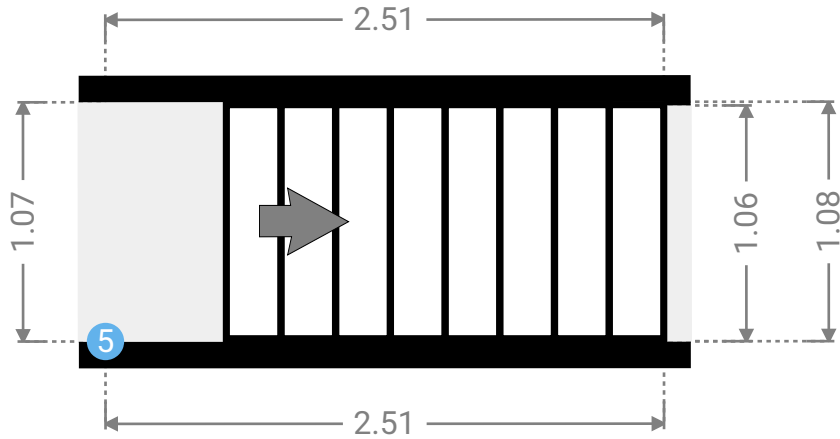
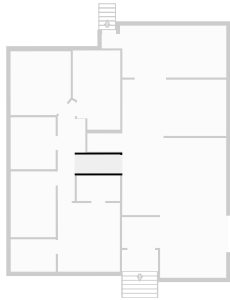
Height  
0.00 m



FLOORS: 2

▼ Hall  
1st Floor

WIDTH: 2.51 m • LENGTH: 1.08 m  
AREA: 2.70 m<sup>2</sup> • PERIMETER: 7.17 m



▼ Hall/1st Floor

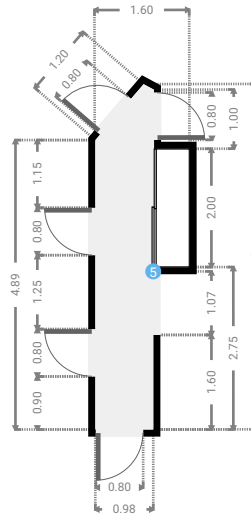
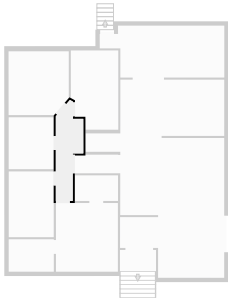
5 OPENING

Height  
0.00 m



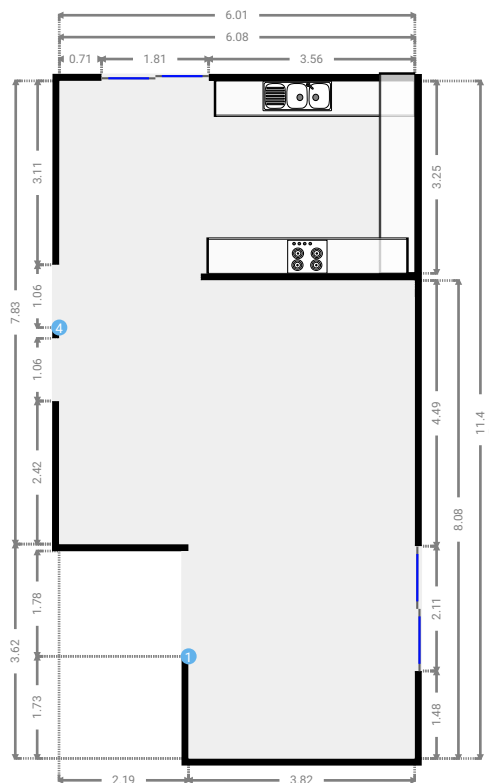
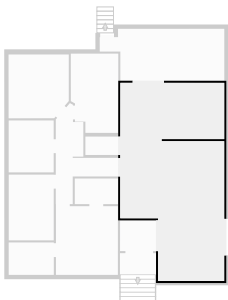
▼ Hall  
1st Floor

WIDTH: 1.60 m • LENGTH: 5.84 m  
AREA: 6.56 m<sup>2</sup> • PERIMETER: 14.28 m



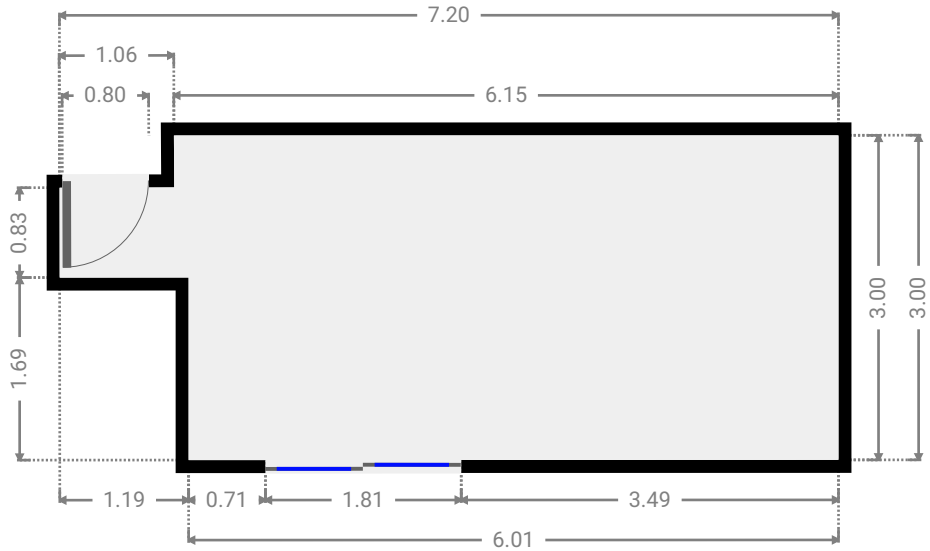
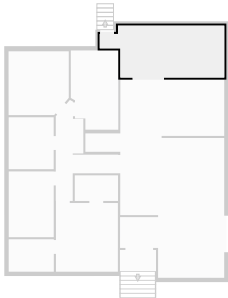
▼ Living Room  
1st Floor

WIDTH: 6.01 m • LENGTH: 11.45 m  
AREA: 60.45 m<sup>2</sup> • PERIMETER: 42.16 m



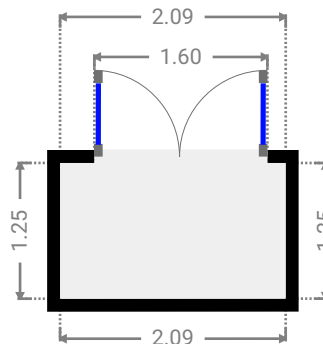
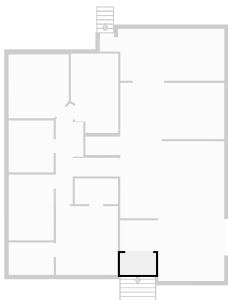
▼ Other  
1st Floor

WIDTH: 7.20 m • LENGTH: 3.00 m  
AREA: 19.09 m<sup>2</sup> • PERIMETER: 20.40 m



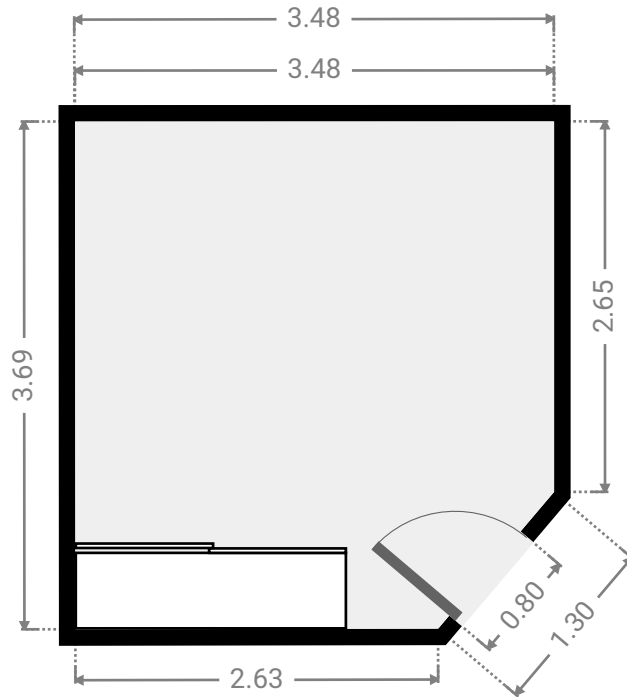
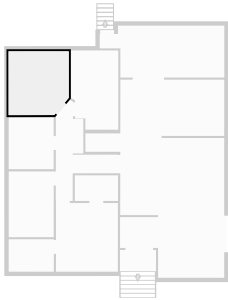
▼ Other  
1st Floor

WIDTH: 2.09 m • LENGTH: 1.26 m  
AREA: 2.62 m<sup>2</sup> • PERIMETER: 6.68 m



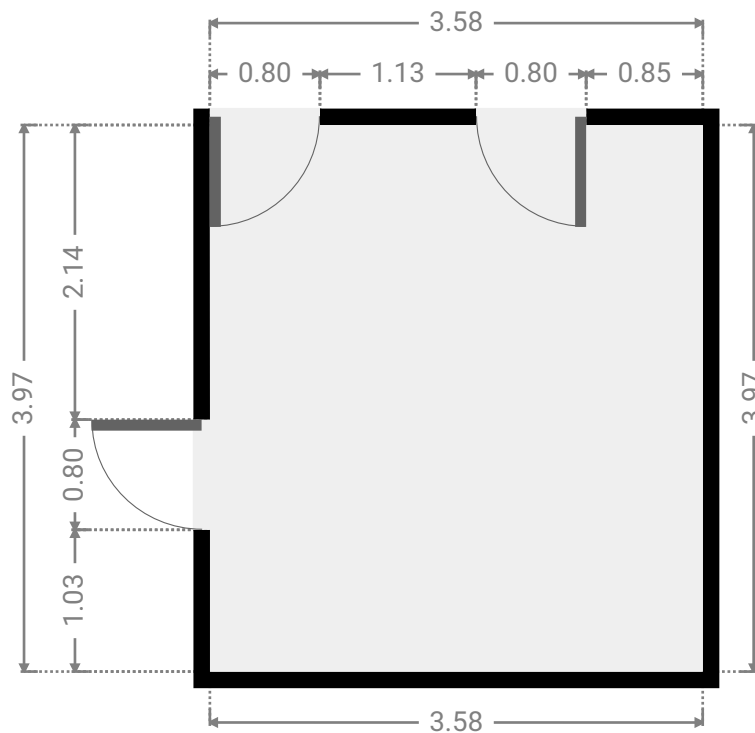
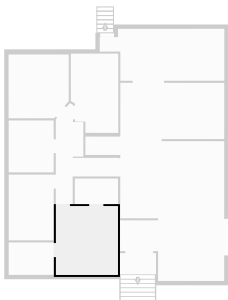
▼ Primary Bedroom  
1st Floor

WIDTH: 3.48 m • LENGTH: 3.69 m  
AREA: 12.40 m<sup>2</sup> • PERIMETER: 13.80 m



▼ Primary Bedroom  
1st Floor

WIDTH: 3.58 m • LENGTH: 3.97 m  
AREA: 14.22 m<sup>2</sup> • PERIMETER: 15.10 m



▼ Closet  
1st Floor

WIDTH: 2.50 m • LENGTH: 1.48 m  
AREA: 3.70 m<sup>2</sup> • PERIMETER: 7.96 m

