

# 187 Coome street

**SUBMITTED BY**

Ray White Rockhampton Casey  
stockers@cqoz.com

---

**CREATED ON**

2022-04-06

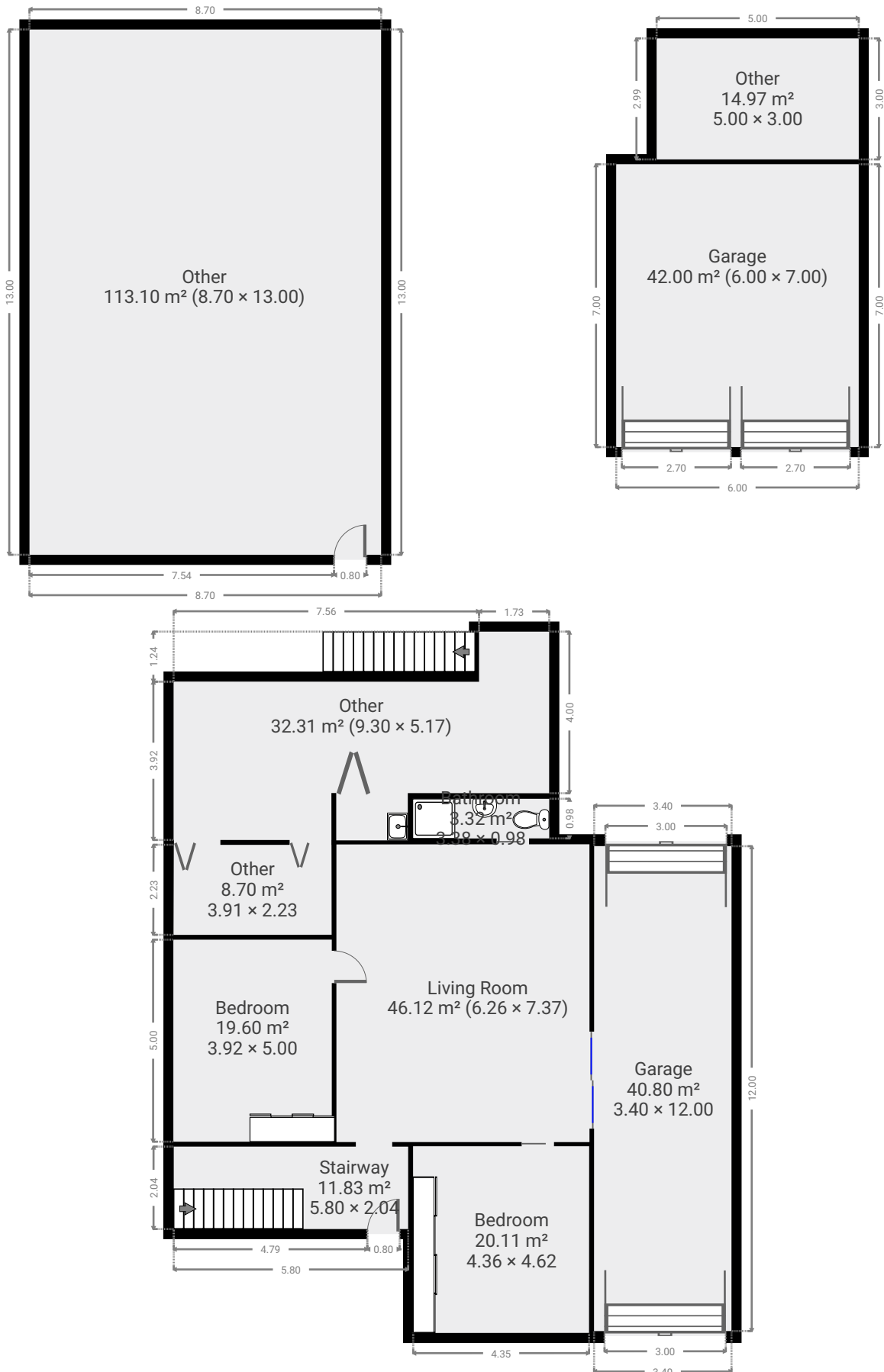
---

**Floors**

2

---

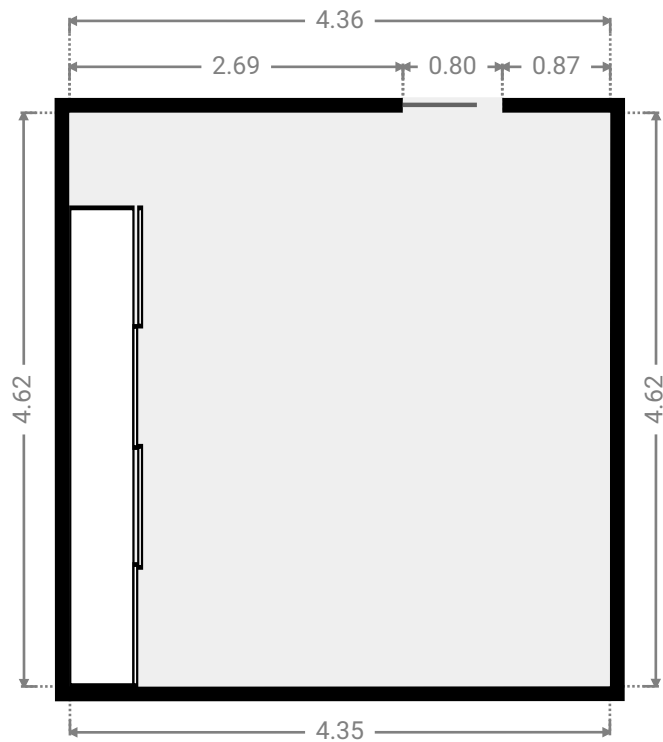
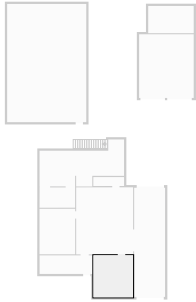
▼ Ground Floor





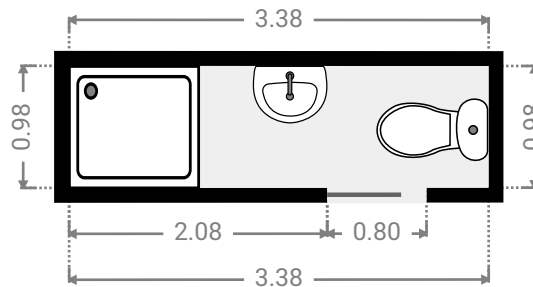
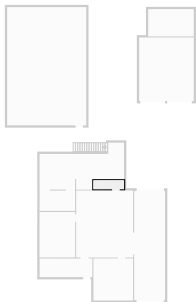
▼ **Bedroom**  
Ground Floor

WIDTH: 4.36 m • LENGTH: 4.62 m  
AREA: 20.11 m<sup>2</sup> • PERIMETER: 17.95 m



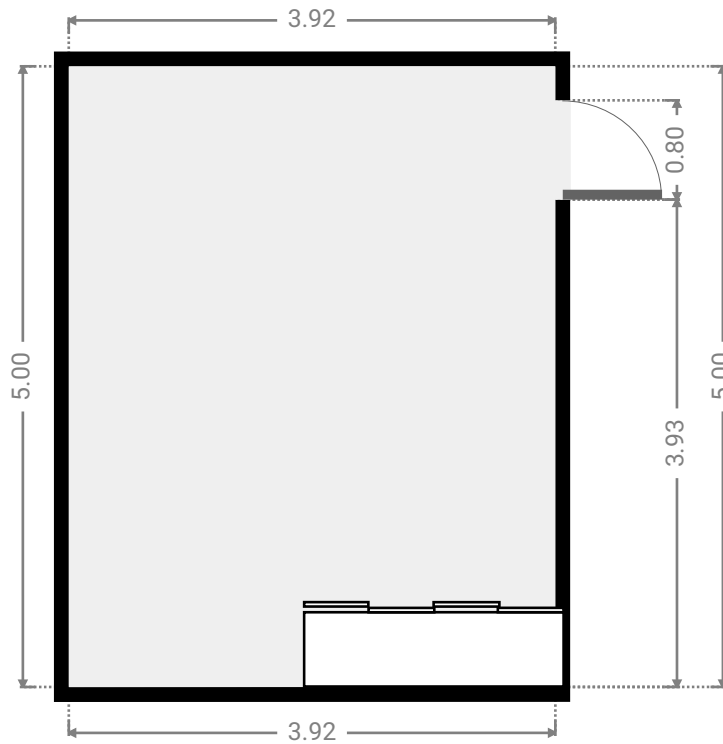
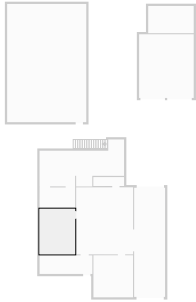
▼ **Bathroom**  
Ground Floor

WIDTH: 3.38 m • LENGTH: 0.98 m  
AREA: 3.32 m<sup>2</sup> • PERIMETER: 8.72 m



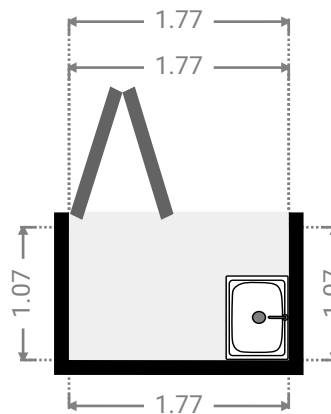
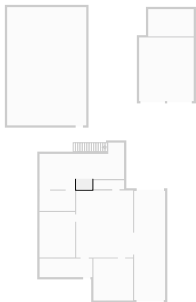
▼ **Bedroom**  
Ground Floor

WIDTH: 3.92 m • LENGTH: 5.00 m  
AREA: 19.60 m<sup>2</sup> • PERIMETER: 17.84 m



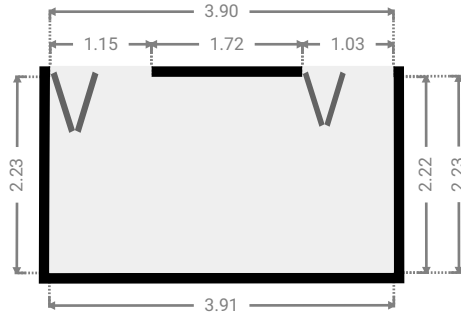
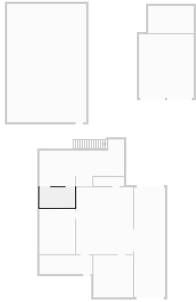
▼ **Laundry Room**  
Ground Floor

WIDTH: 1.77 m • LENGTH: 1.07 m  
AREA: 1.89 m<sup>2</sup> • PERIMETER: 5.68 m



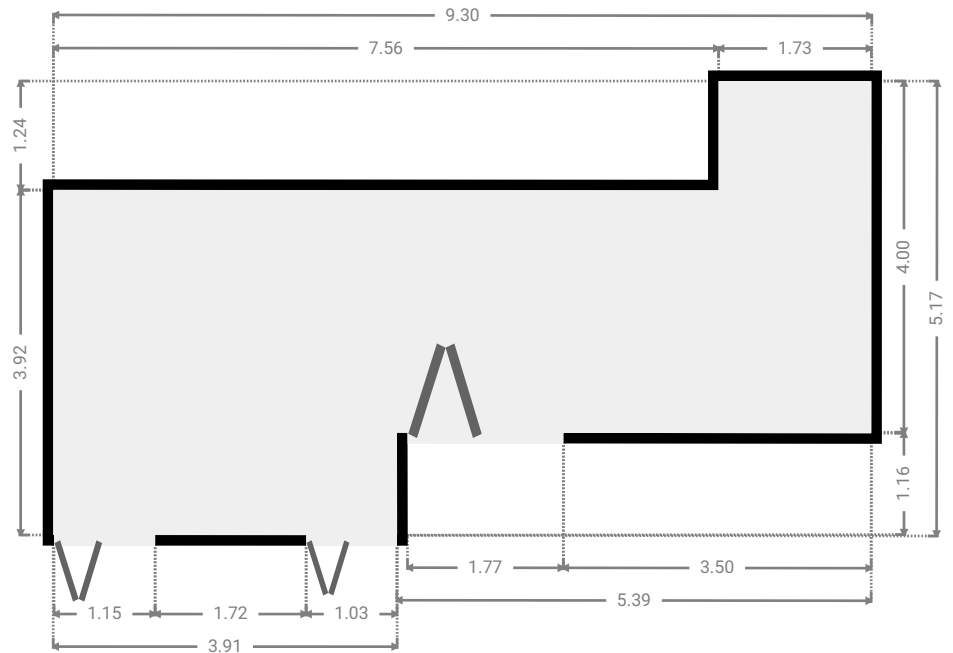
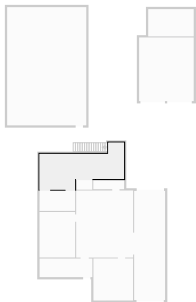
▼ Other  
Ground Floor

WIDTH: 3.91 m • LENGTH: 2.23 m  
AREA: 8.70 m<sup>2</sup> • PERIMETER: 12.27 m



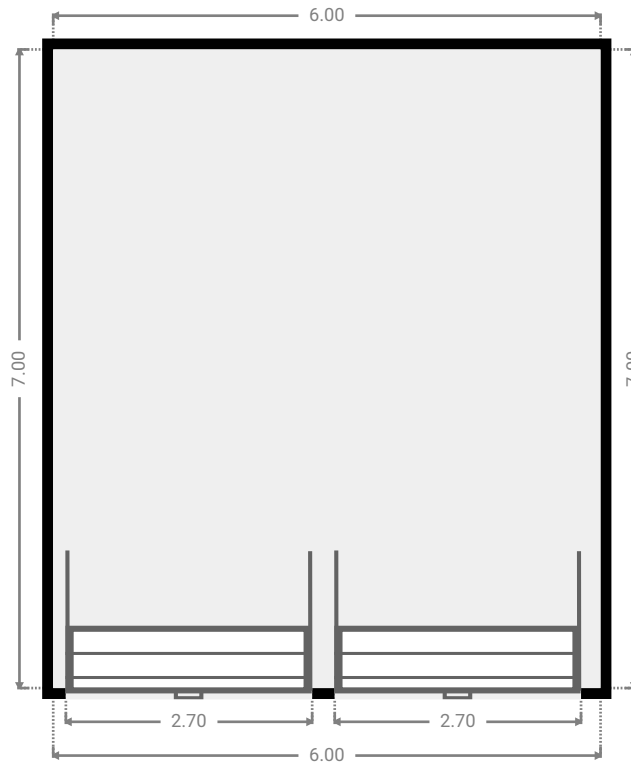
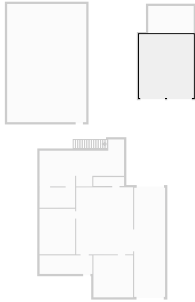
▼ Other  
Ground Floor

WIDTH: 9.30 m • LENGTH: 5.17 m  
AREA: 32.31 m<sup>2</sup> • PERIMETER: 28.91 m



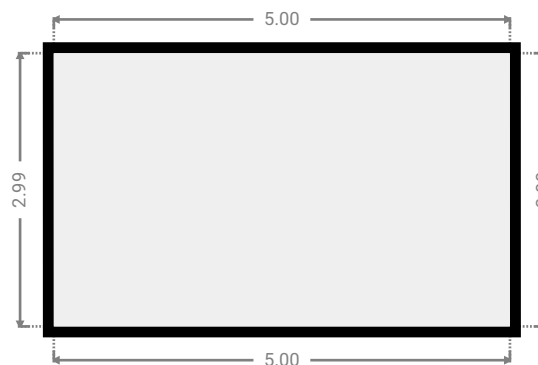
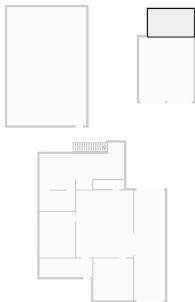
▼ **Garage**  
Ground Floor

WIDTH: 6.00 m • LENGTH: 7.00 m  
AREA: 42.00 m<sup>2</sup> • PERIMETER: 26.00 m



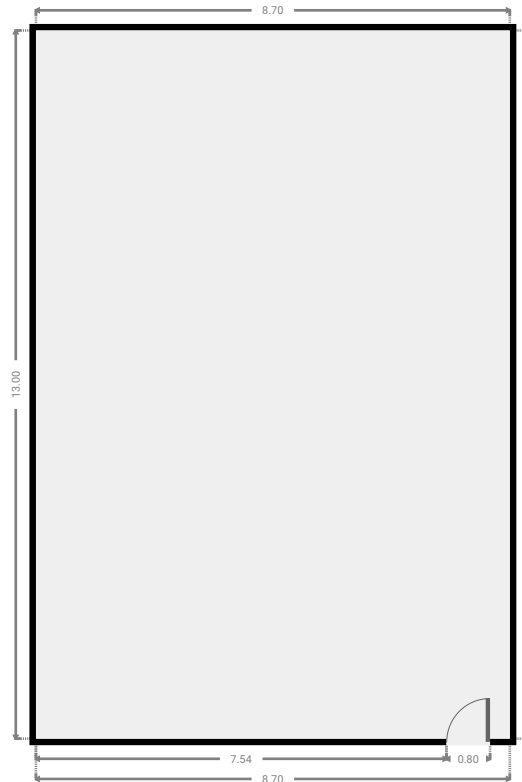
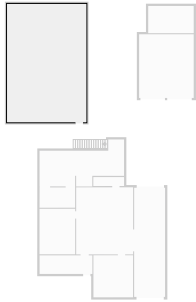
▼ **Other**  
Ground Floor

WIDTH: 5.00 m • LENGTH: 3.00 m  
AREA: 14.97 m<sup>2</sup> • PERIMETER: 15.99 m



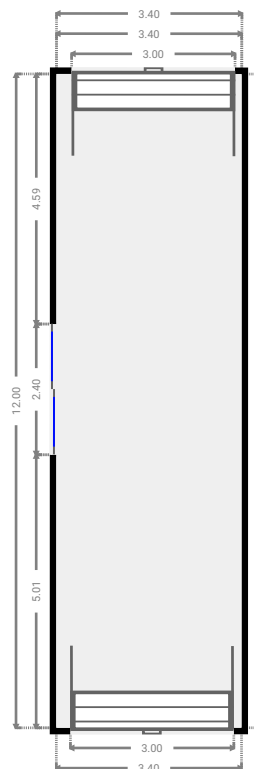
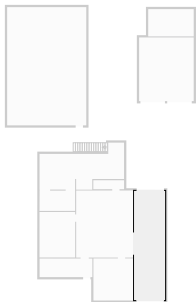
▼ **Other**  
Ground Floor

WIDTH: 8.70 m • LENGTH: 13.00 m  
AREA: 113.10 m<sup>2</sup> • PERIMETER: 43.40 m



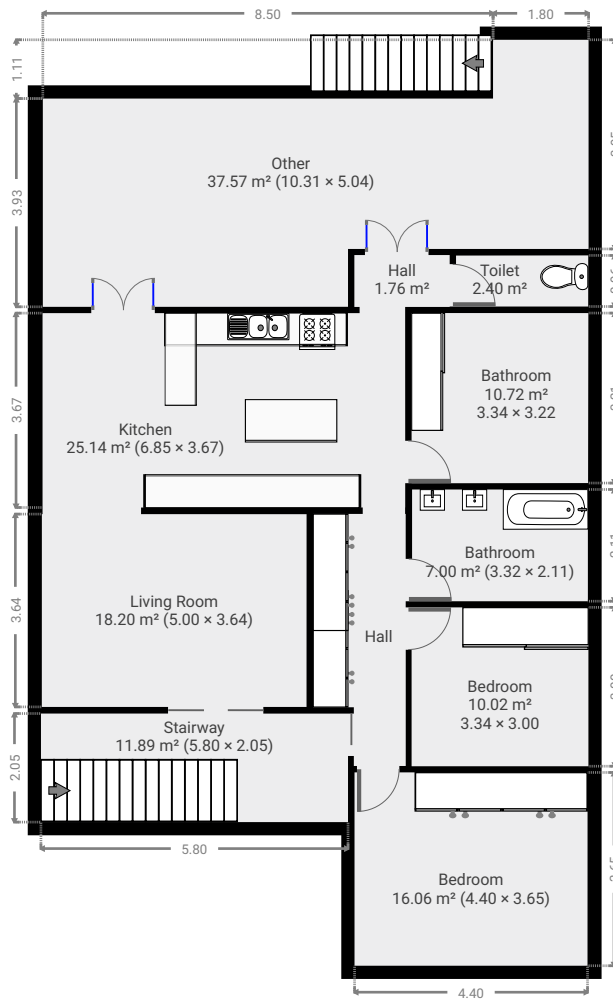
▼ **Garage**  
Ground Floor

WIDTH: 3.40 m • LENGTH: 12.00 m  
AREA: 40.80 m<sup>2</sup> • PERIMETER: 30.80 m



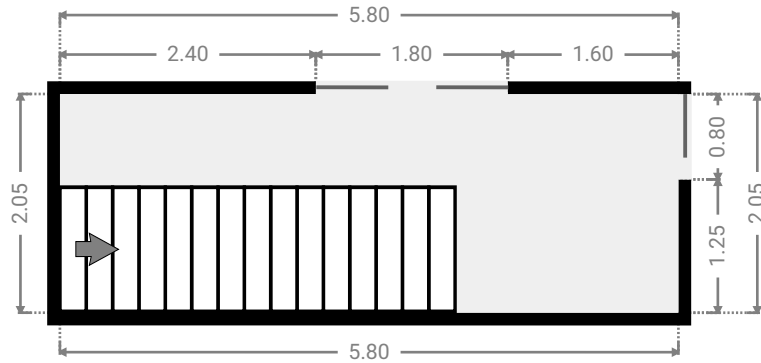
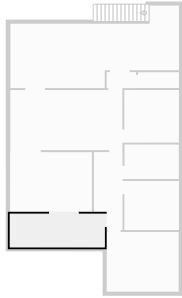


▼ 1st Floor



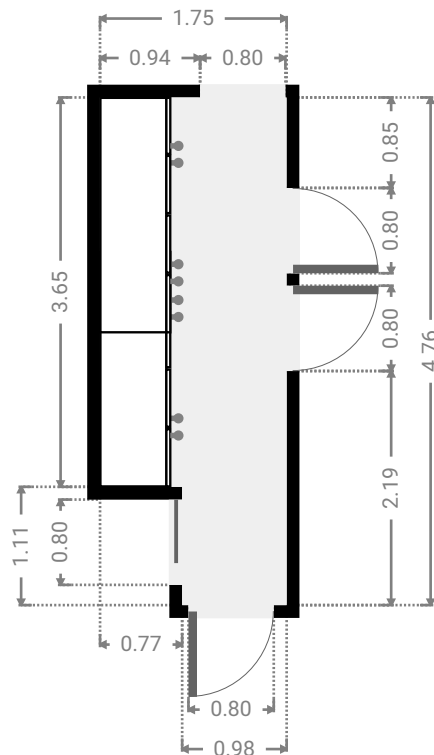
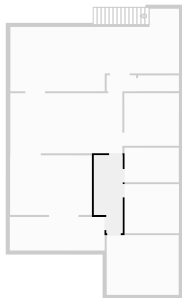
▼ **Stairway**  
1st Floor

WIDTH: 5.80 m • LENGTH: 2.05 m  
AREA: 11.89 m<sup>2</sup> • PERIMETER: 15.70 m



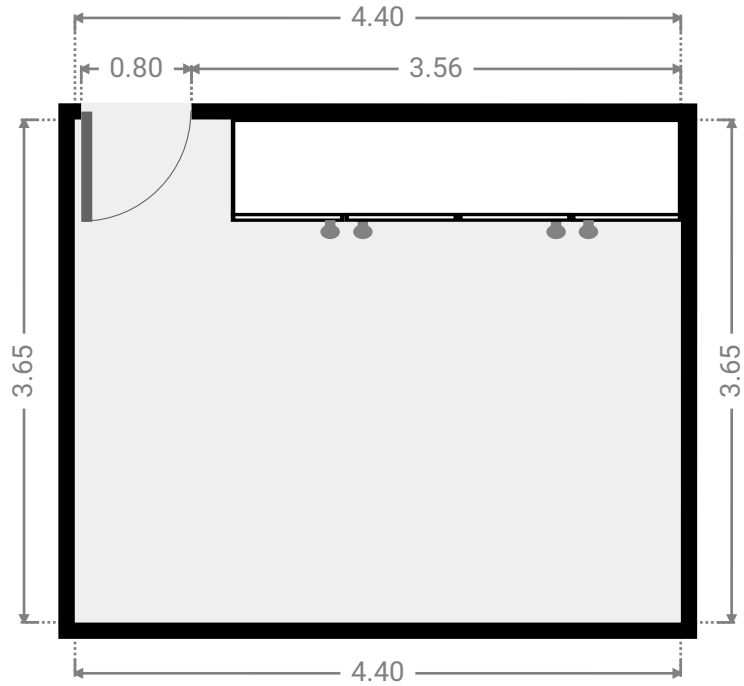
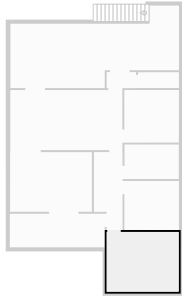
▼ **Hall**  
1st Floor

WIDTH: 1.75 m • LENGTH: 4.76 m  
AREA: 7.48 m<sup>2</sup> • PERIMETER: 13.02 m



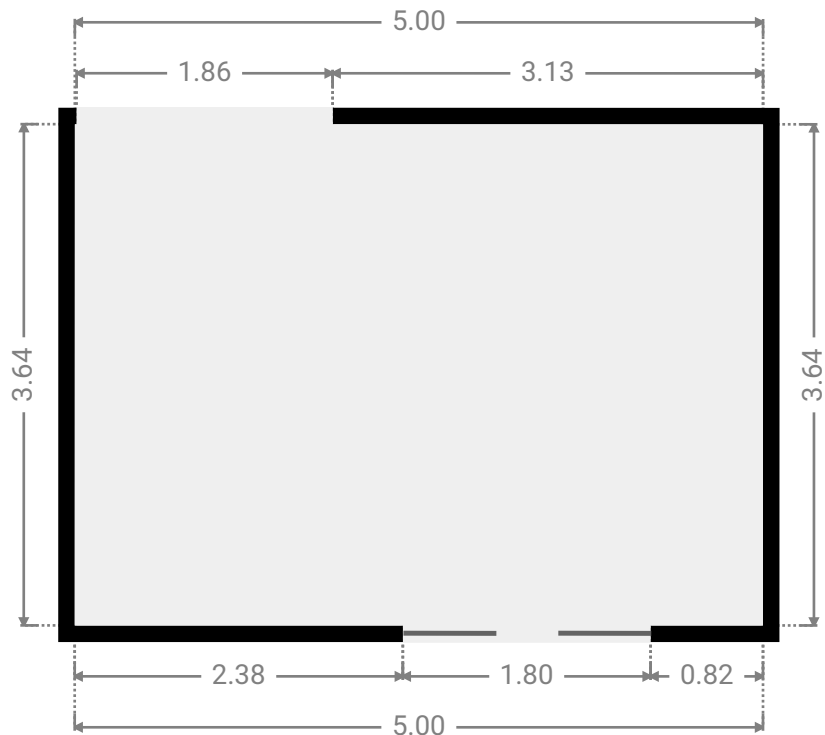
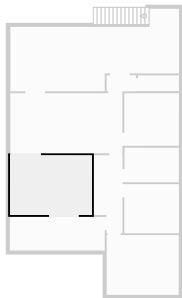
▼ **Bedroom**  
1st Floor

WIDTH: 4.40 m • LENGTH: 3.65 m  
AREA: 16.06 m<sup>2</sup> • PERIMETER: 16.10 m



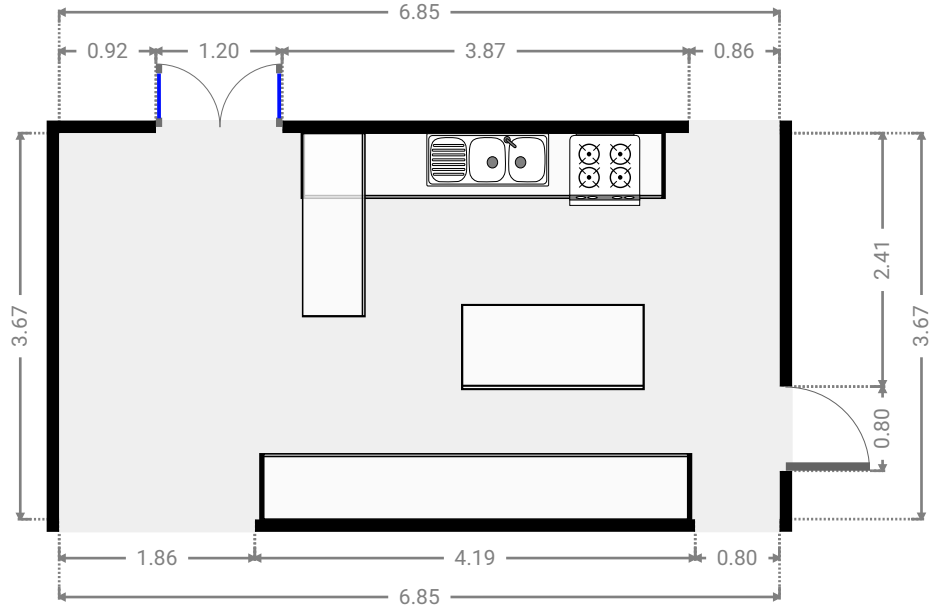
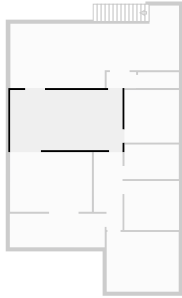
▼ **Living Room**  
1st Floor

WIDTH: 5.00 m • LENGTH: 3.64 m  
AREA: 18.20 m<sup>2</sup> • PERIMETER: 17.28 m



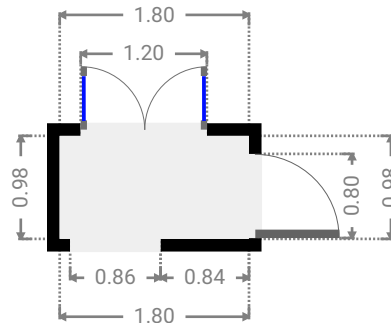
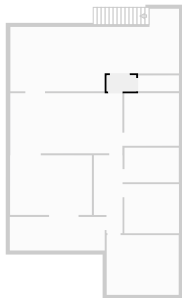
▼ Kitchen  
1st Floor

WIDTH: 6.85 m • LENGTH: 3.67 m  
AREA: 25.14 m<sup>2</sup> • PERIMETER: 21.04 m



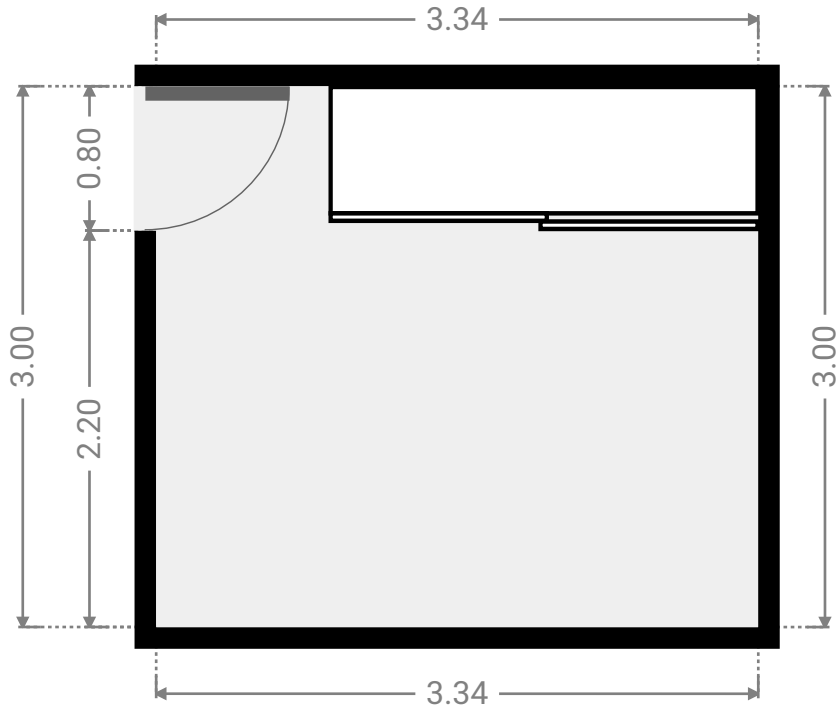
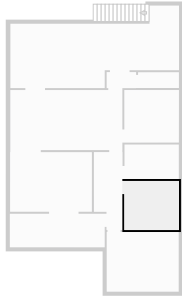
▼ Hall  
1st Floor

WIDTH: 1.80 m • LENGTH: 0.98 m  
AREA: 1.76 m<sup>2</sup> • PERIMETER: 5.56 m



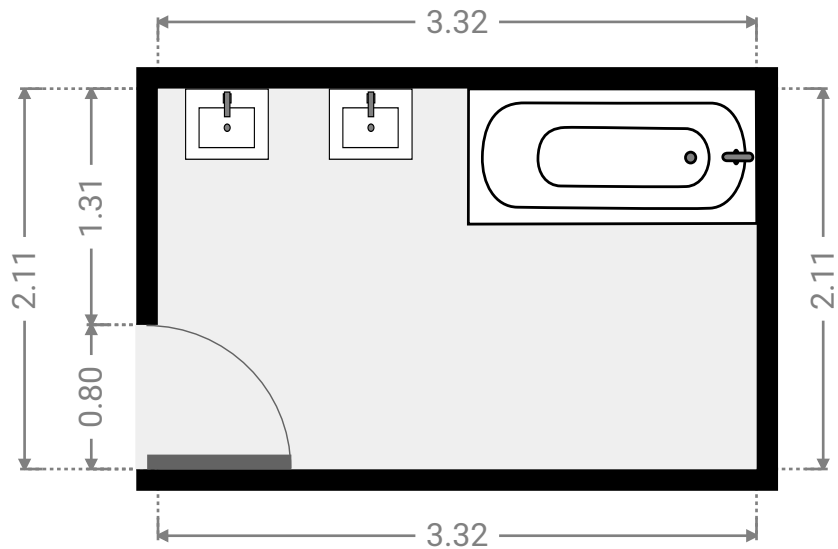
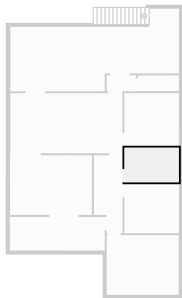
▼ **Bedroom**  
1st Floor

WIDTH: 3.34 m • LENGTH: 3.00 m  
AREA: 10.02 m<sup>2</sup> • PERIMETER: 12.68 m



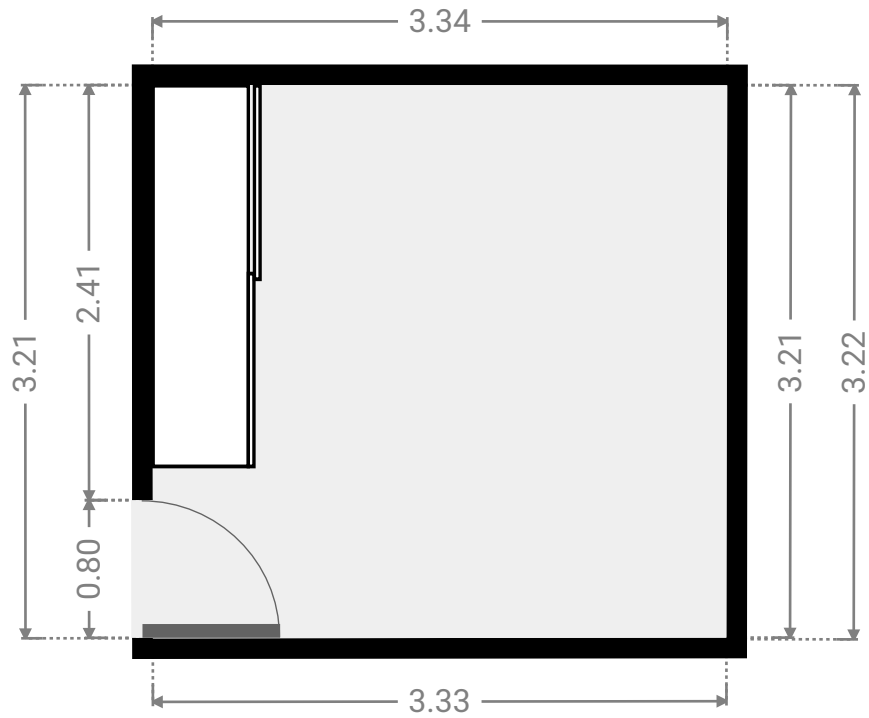
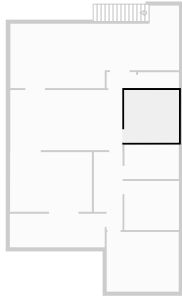
▼ **Bathroom**  
1st Floor

WIDTH: 3.32 m • LENGTH: 2.11 m  
AREA: 7.00 m<sup>2</sup> • PERIMETER: 10.86 m



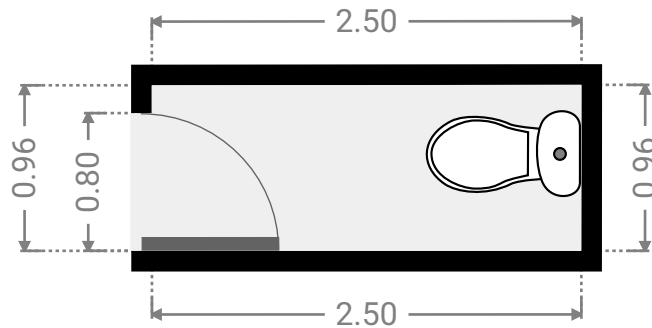
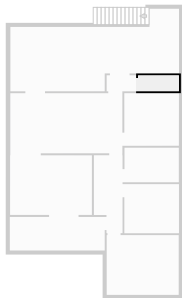
▼ **Bathroom**  
1st Floor

WIDTH: 3.34 m • LENGTH: 3.21 m  
AREA: 10.72 m<sup>2</sup> • PERIMETER: 13.10 m



▼ **Toilet**  
1st Floor

WIDTH: 2.50 m • LENGTH: 1.00 m  
AREA: 2.40 m<sup>2</sup> • PERIMETER: 6.92 m



▼ Other  
1st Floor

WIDTH: 10.31 m • LENGTH: 5.04 m  
AREA: 37.57 m<sup>2</sup> • PERIMETER: 30.70 m

