

# 18 Stover Street

**SUBMITTED BY**

Ray White Rockhampton Casey  
stockers@cqoz.com

---

**CREATED ON**

2022-08-02

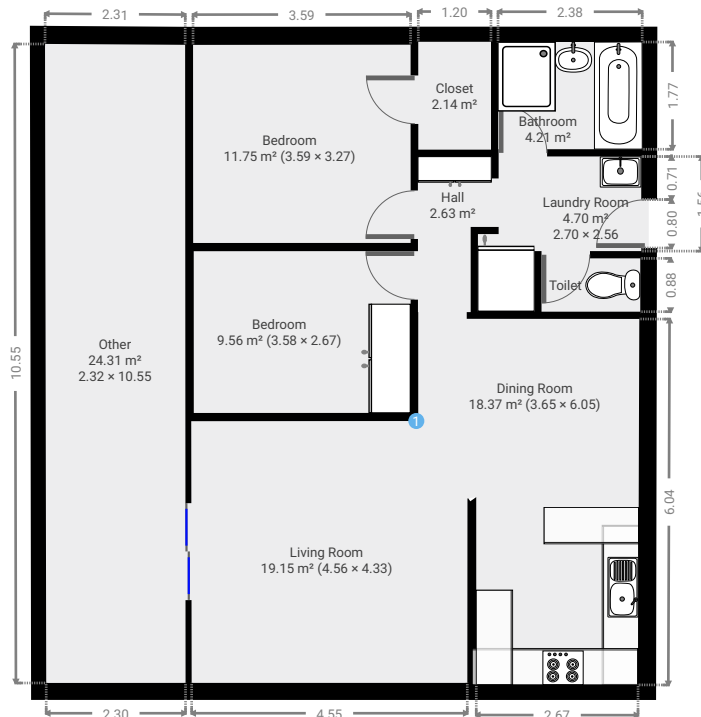
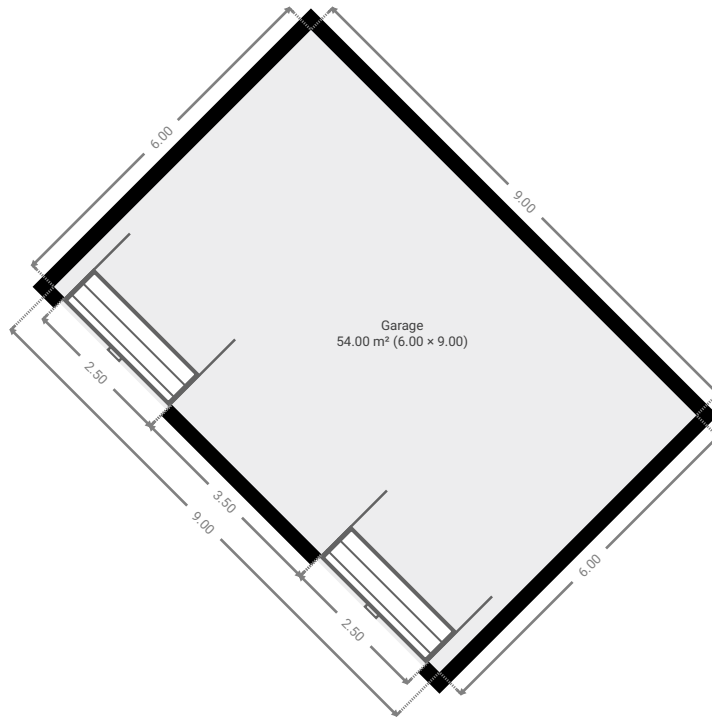
---

**Floors**

1

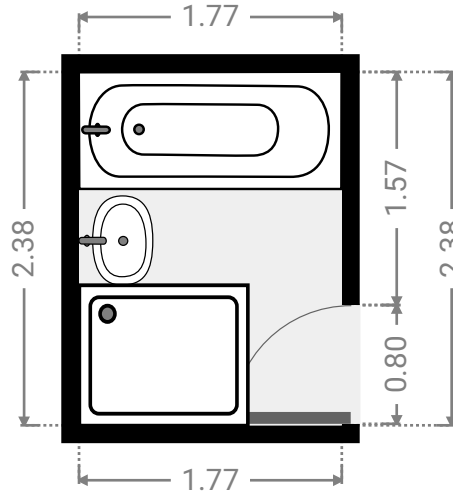
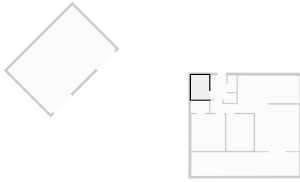
---

## ▼ Ground Floor



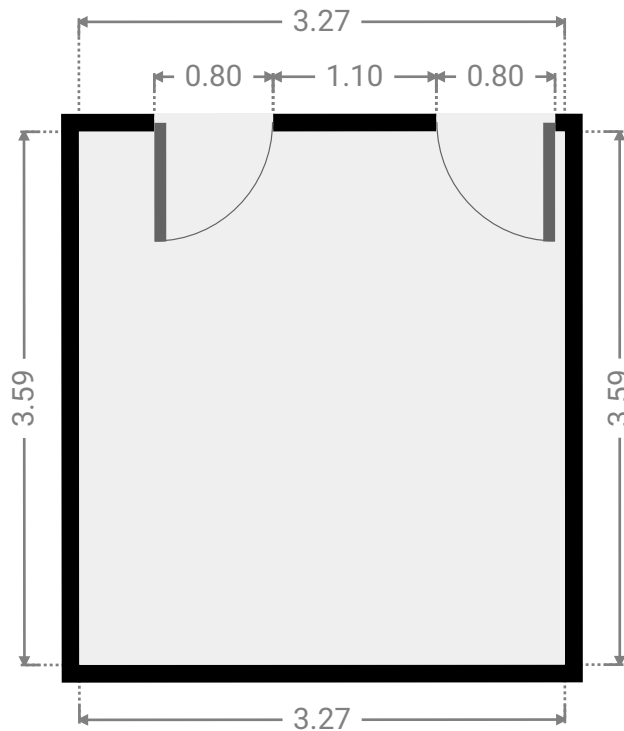
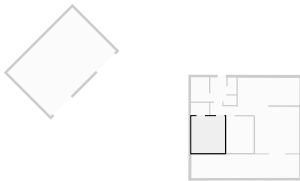
▼ **Bathroom**  
Ground Floor

WIDTH: 1.77 m • LENGTH: 2.38 m  
AREA: 4.21 m<sup>2</sup> • PERIMETER: 8.30 m



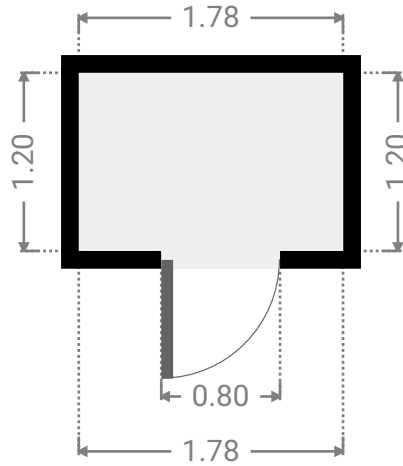
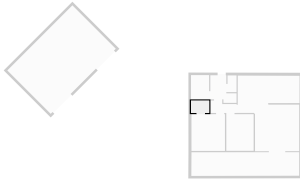
▼ **Bedroom**  
Ground Floor

WIDTH: 3.27 m • LENGTH: 3.59 m  
AREA: 11.75 m<sup>2</sup> • PERIMETER: 13.72 m



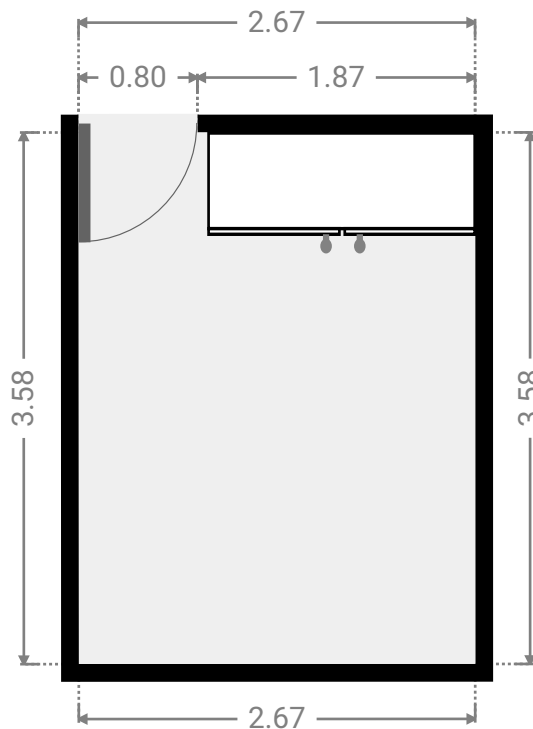
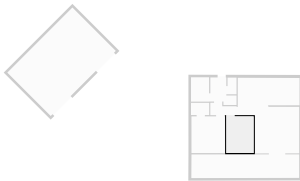
▼ **Closet**  
Ground Floor

WIDTH: 1.78 m • LENGTH: 1.20 m  
AREA: 2.14 m<sup>2</sup> • PERIMETER: 5.96 m



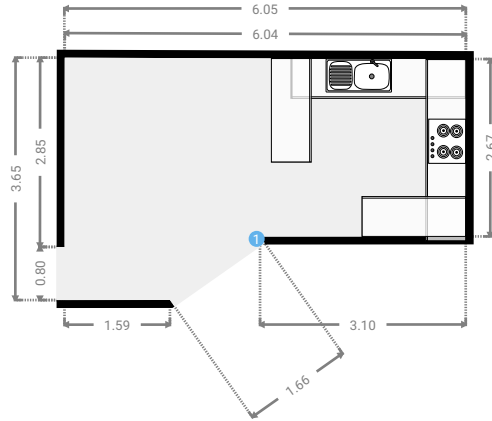
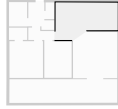
▼ **Bedroom**  
Ground Floor

WIDTH: 2.67 m • LENGTH: 3.58 m  
AREA: 9.56 m<sup>2</sup> • PERIMETER: 12.50 m



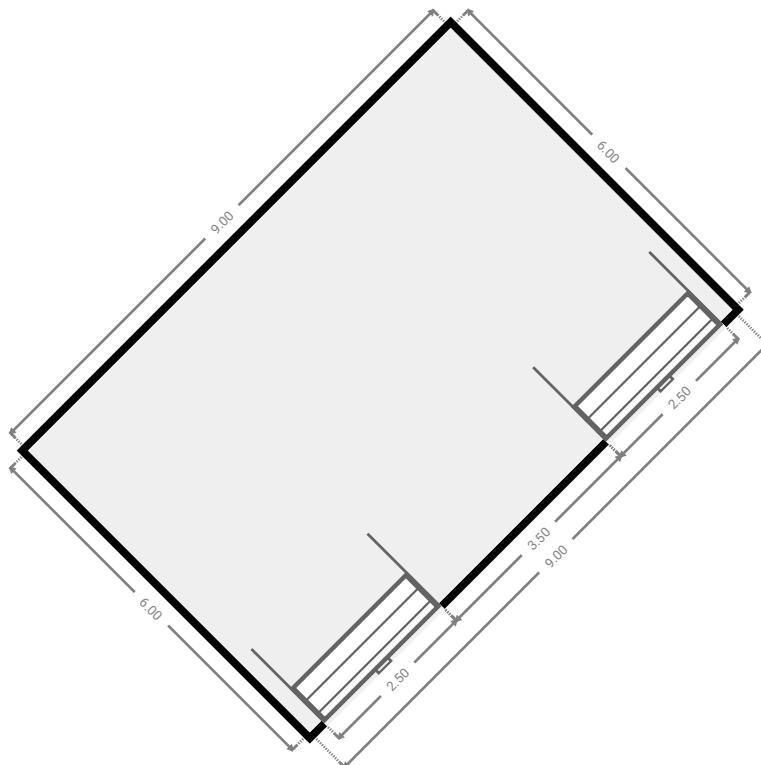
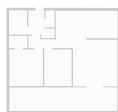
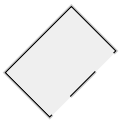
## ▼ Dining Room Ground Floor

WIDTH: 6.05 m • LENGTH: 3.65 m  
AREA: 18.37 m<sup>2</sup> • PERIMETER: 18.70 m



## ▼ Garage Ground Floor

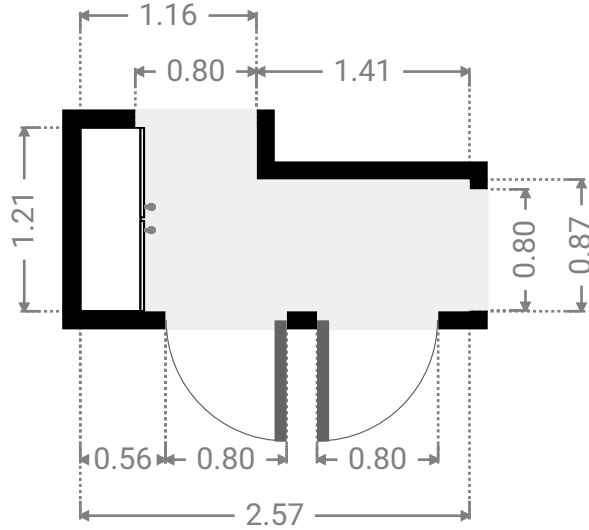
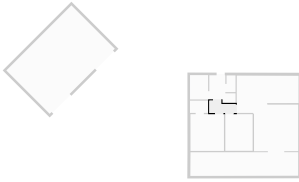
WIDTH: 9.00 m • LENGTH: 6.00 m  
AREA: 54.00 m<sup>2</sup> • PERIMETER: 30.00 m



FLOORS: 1

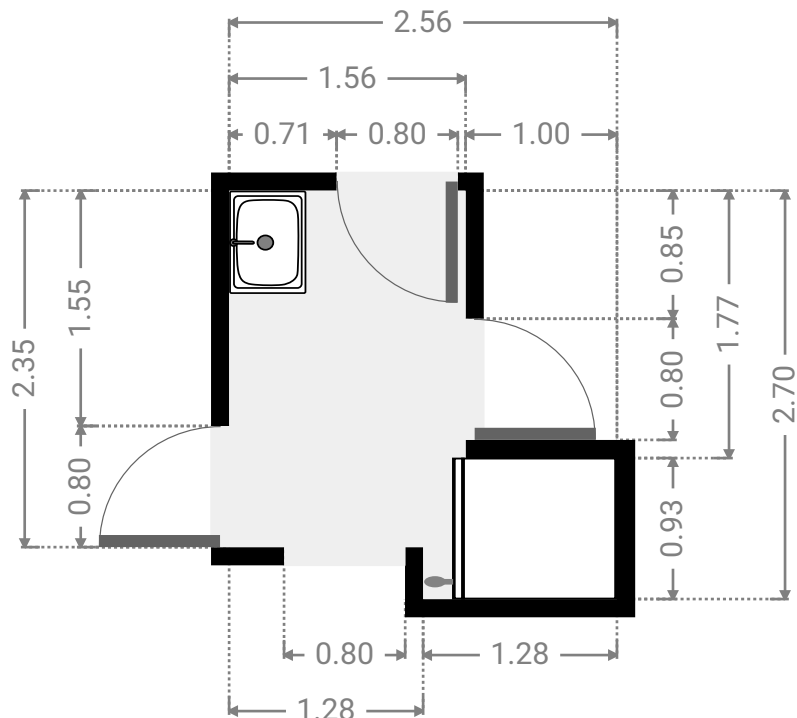
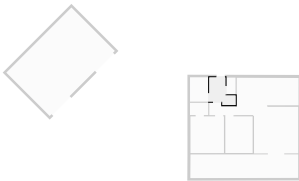
▼ Hall  
Ground Floor

WIDTH: 2.57 m • LENGTH: 1.21 m  
AREA: 2.63 m<sup>2</sup> • PERIMETER: 7.57 m



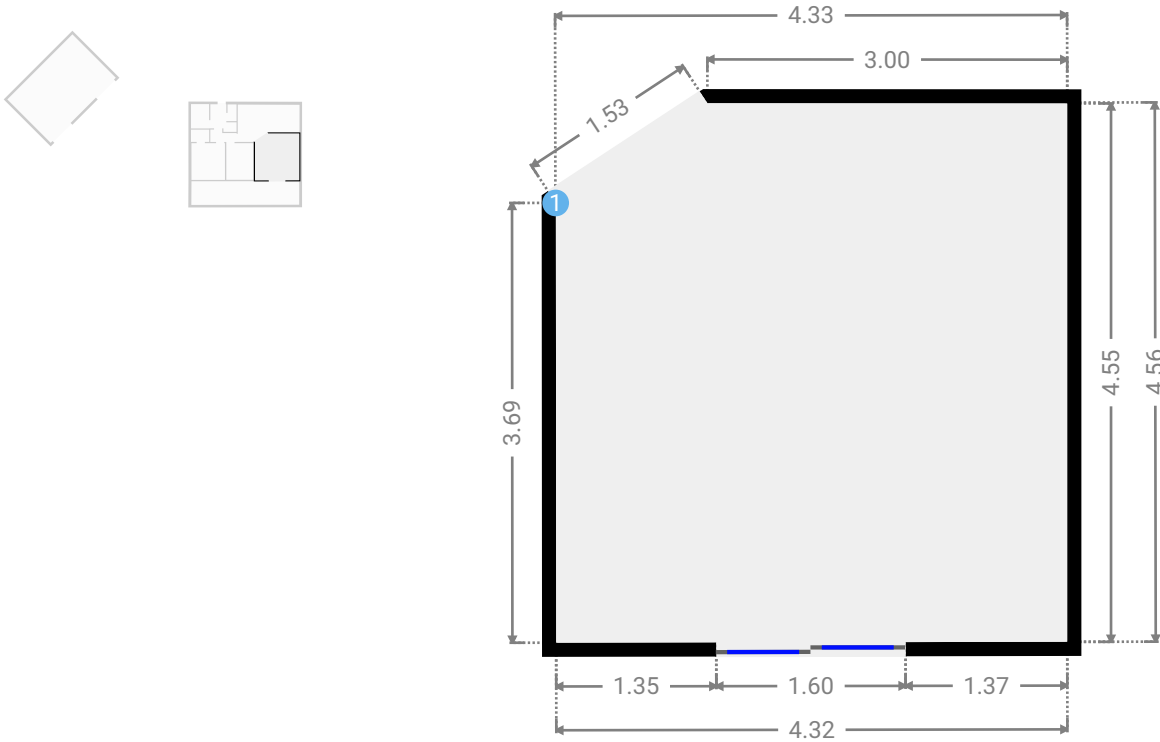
▼ Laundry Room  
Ground Floor

WIDTH: 2.56 m • LENGTH: 2.70 m  
AREA: 4.70 m<sup>2</sup> • PERIMETER: 10.52 m



▼ Living Room  
Ground Floor

WIDTH: 4.33 m • LENGTH: 4.56 m  
AREA: 19.15 m<sup>2</sup> • PERIMETER: 17.16 m



▼ Living Room/Ground Floor

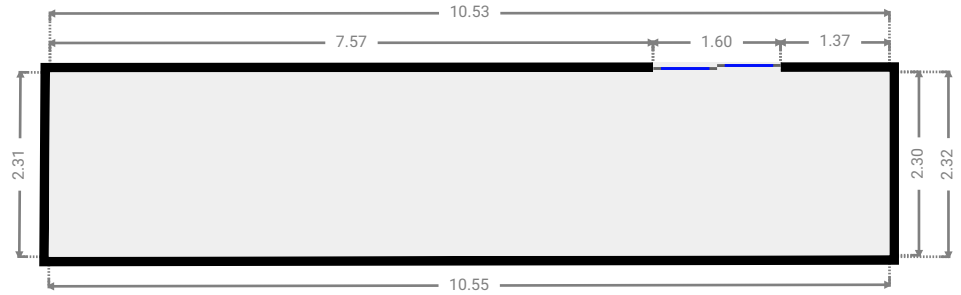
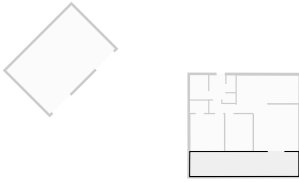
1 OPENING

Height  
0.00 m



## ▼ Other Ground Floor

WIDTH: 10.55 m • LENGTH: 2.32 m  
AREA: 24.31 m<sup>2</sup> • PERIMETER: 25.69 m



## ▼ Toilet Ground Floor

WIDTH: 0.88 m • LENGTH: 1.63 m  
AREA: 1.43 m<sup>2</sup> • PERIMETER: 5.02 m

