

18 Seonaid Place

SUBMITTED BY

Ray White Rockhampton Casey
stockers@cqoz.com

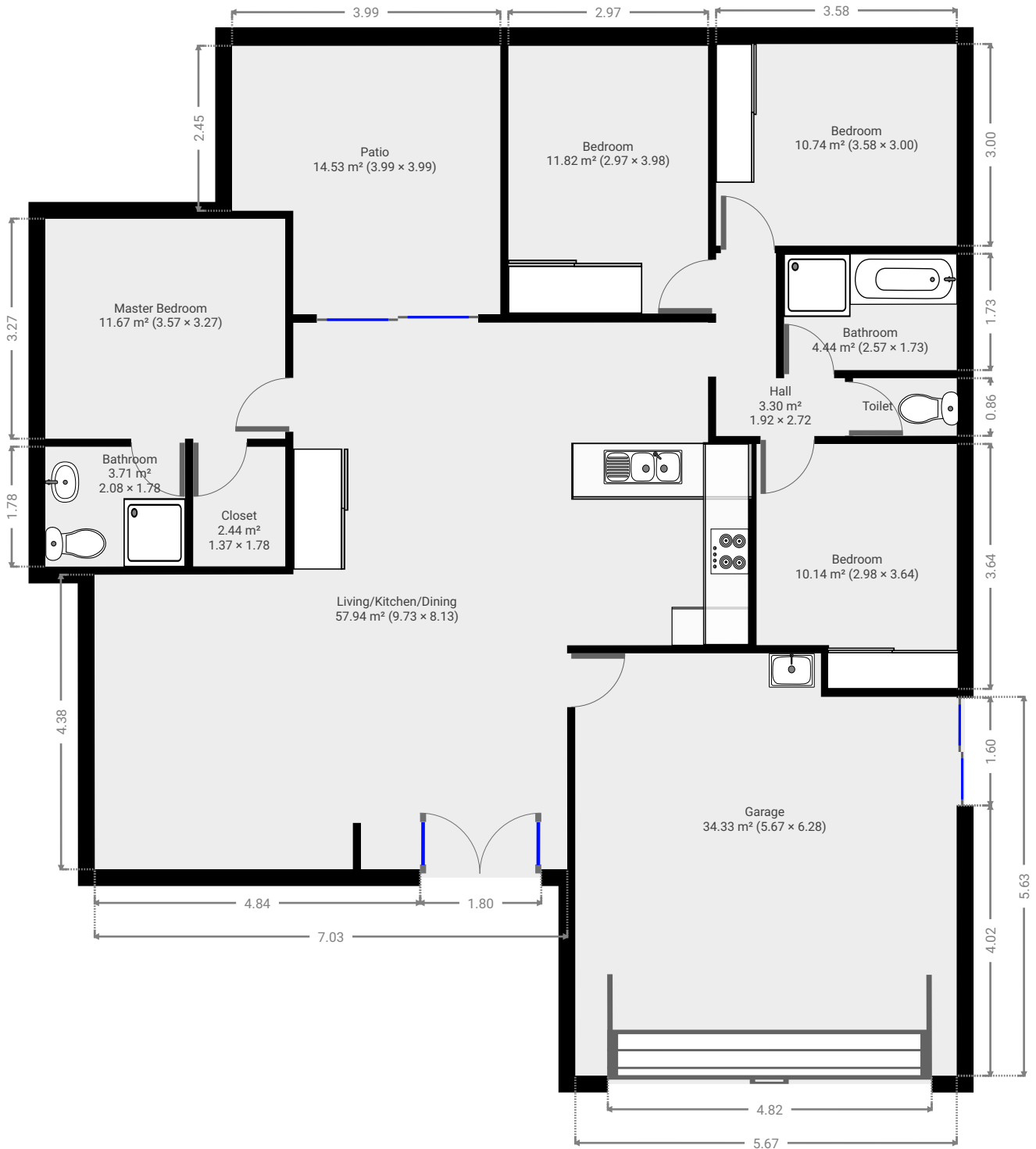
CREATED ON

2021-12-08

Floors

1

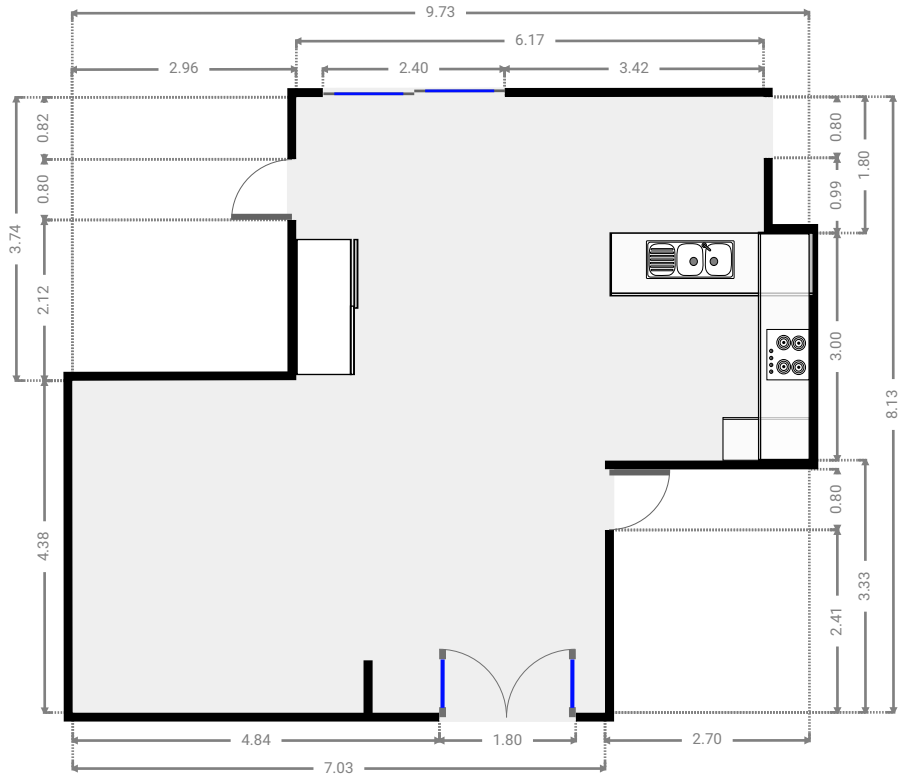
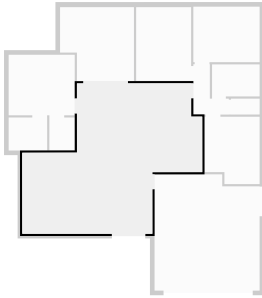
▼ Ground Floor



FLOORS: 1

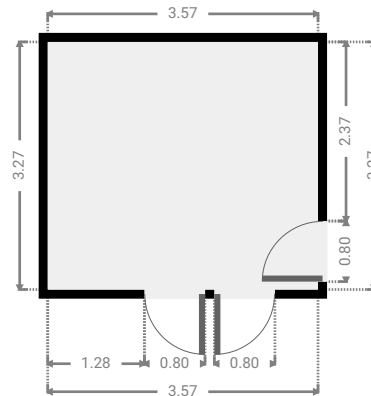
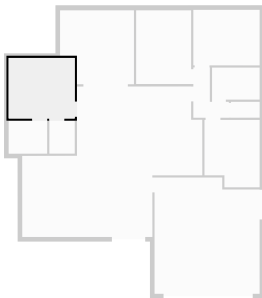
▼ Living/Kitchen/Dining
Ground Floor

WIDTH: 9.73 m • LENGTH: 8.13 m
AREA: 57.94 m² • PERIMETER: 35.71 m



▼ Master Bedroom
Ground Floor

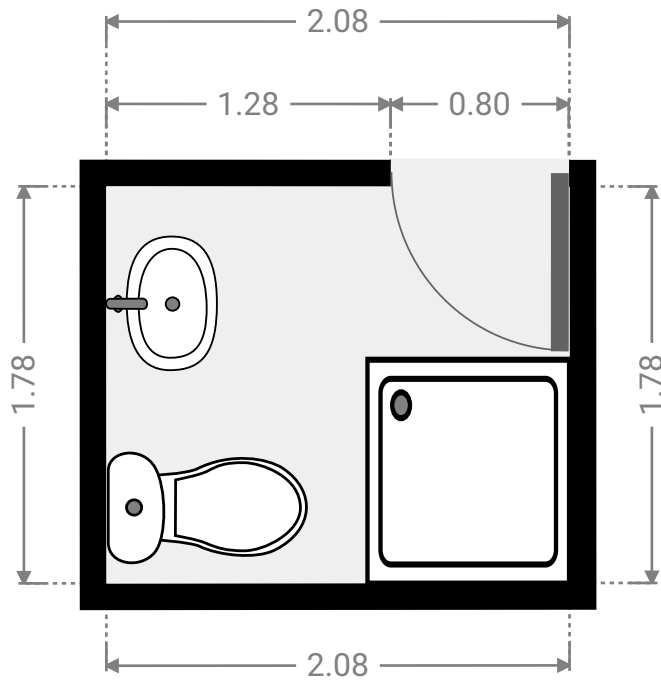
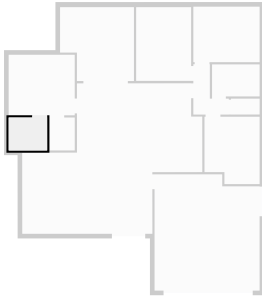
WIDTH: 3.57 m • LENGTH: 3.27 m
AREA: 11.67 m² • PERIMETER: 13.68 m



FLOORS: 1

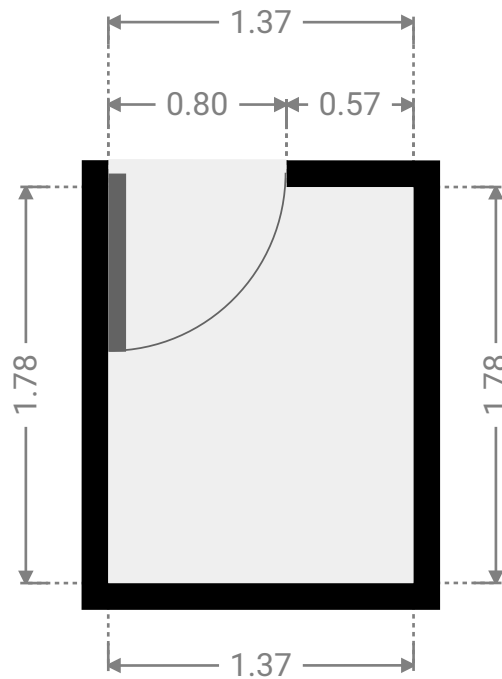
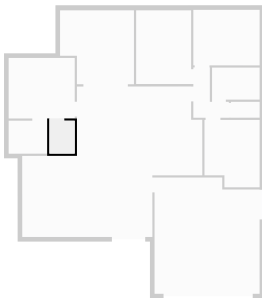
▼ **Bathroom**
Ground Floor

WIDTH: 2.08 m • LENGTH: 1.78 m
AREA: 3.71 m² • PERIMETER: 7.72 m



▼ **Closet**
Ground Floor

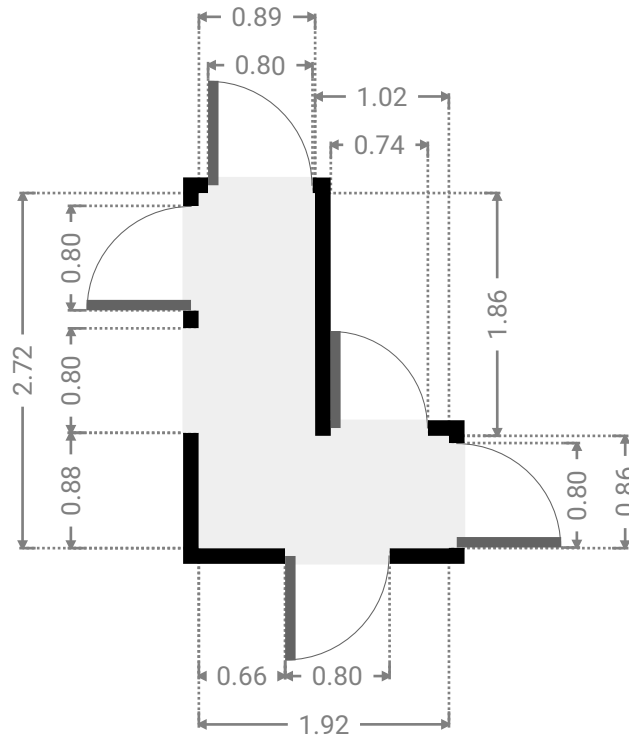
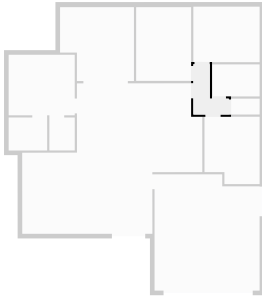
WIDTH: 1.37 m • LENGTH: 1.78 m
AREA: 2.44 m² • PERIMETER: 6.30 m



FLOORS: 1

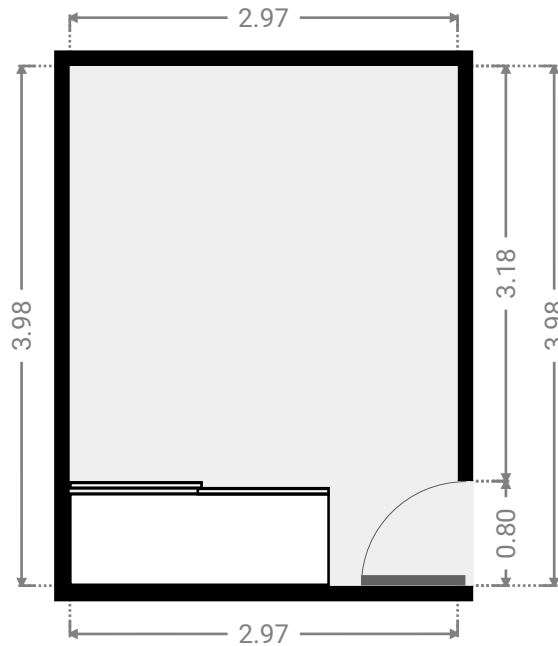
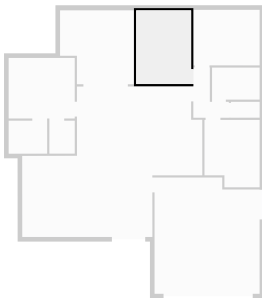
▼ Hall
Ground Floor

WIDTH: 1.92 m • LENGTH: 2.72 m
AREA: 3.30 m² • PERIMETER: 9.27 m



▼ Bedroom
Ground Floor

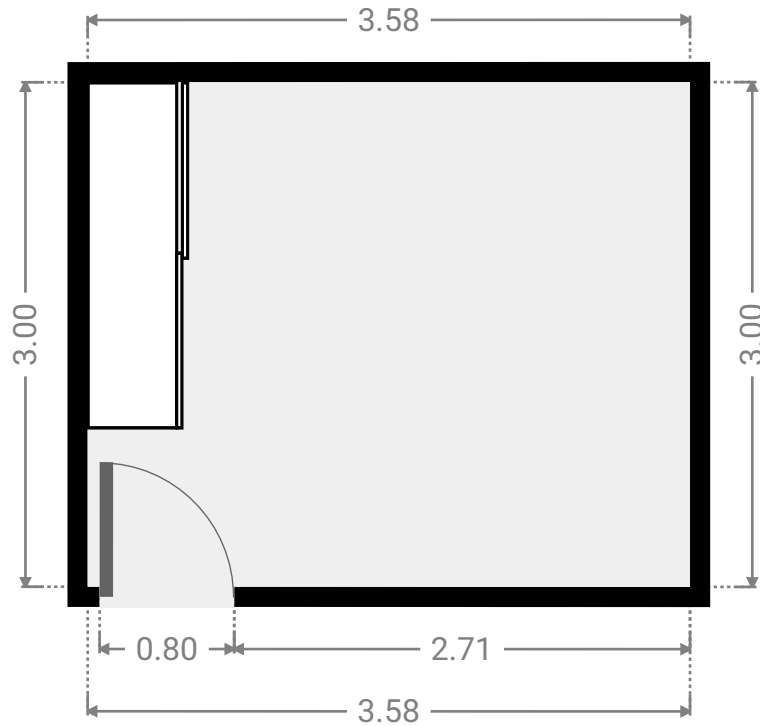
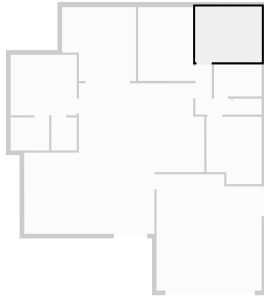
WIDTH: 2.97 m • LENGTH: 3.98 m
AREA: 11.82 m² • PERIMETER: 13.90 m



FLOORS: 1

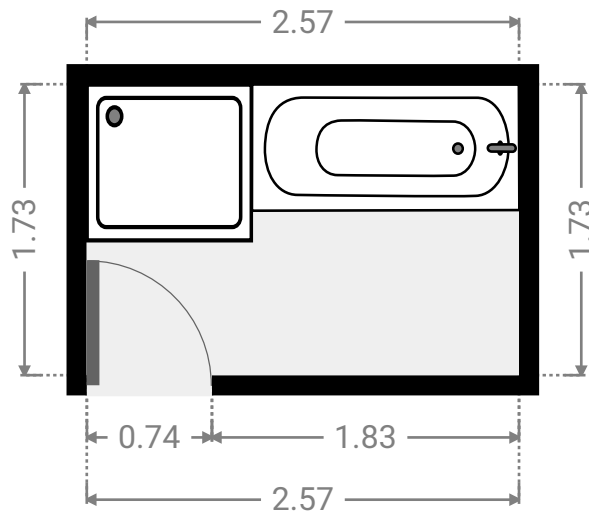
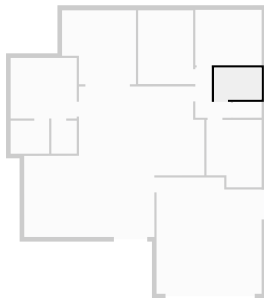
▼ **Bedroom**
Ground Floor

WIDTH: 3.58 m • LENGTH: 3.00 m
AREA: 10.74 m² • PERIMETER: 13.16 m



▼ **Bathroom**
Ground Floor

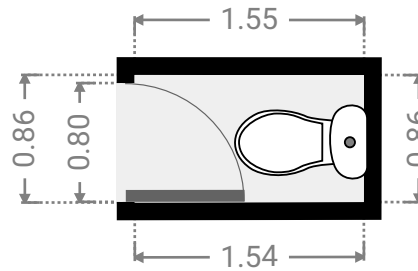
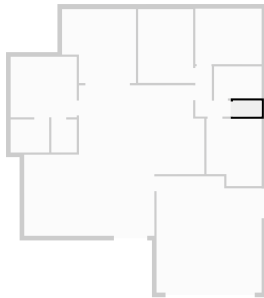
WIDTH: 2.57 m • LENGTH: 1.73 m
AREA: 4.44 m² • PERIMETER: 8.60 m



FLOORS: 1

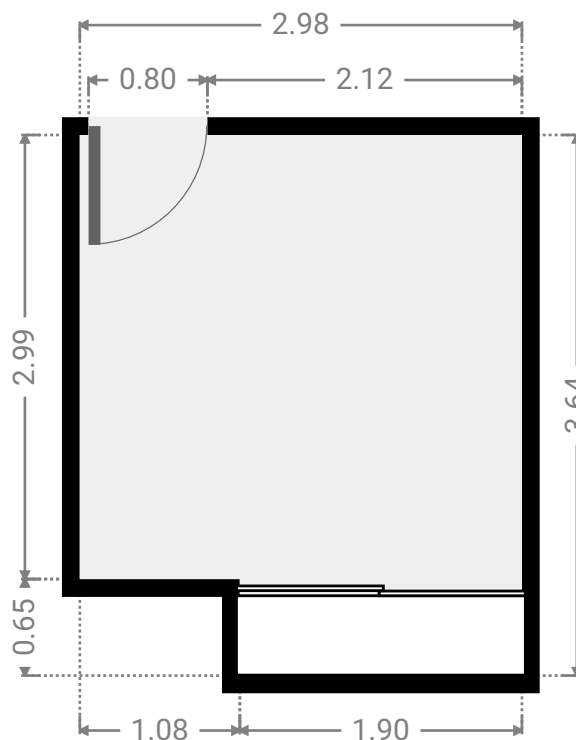
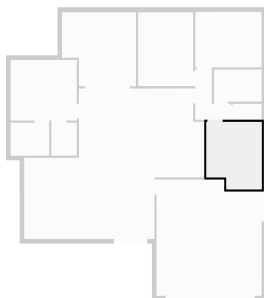
▼ Toilet
Ground Floor

WIDTH: 1.55 m • LENGTH: 0.86 m
AREA: 1.32 m² • PERIMETER: 4.80 m



▼ Bedroom
Ground Floor

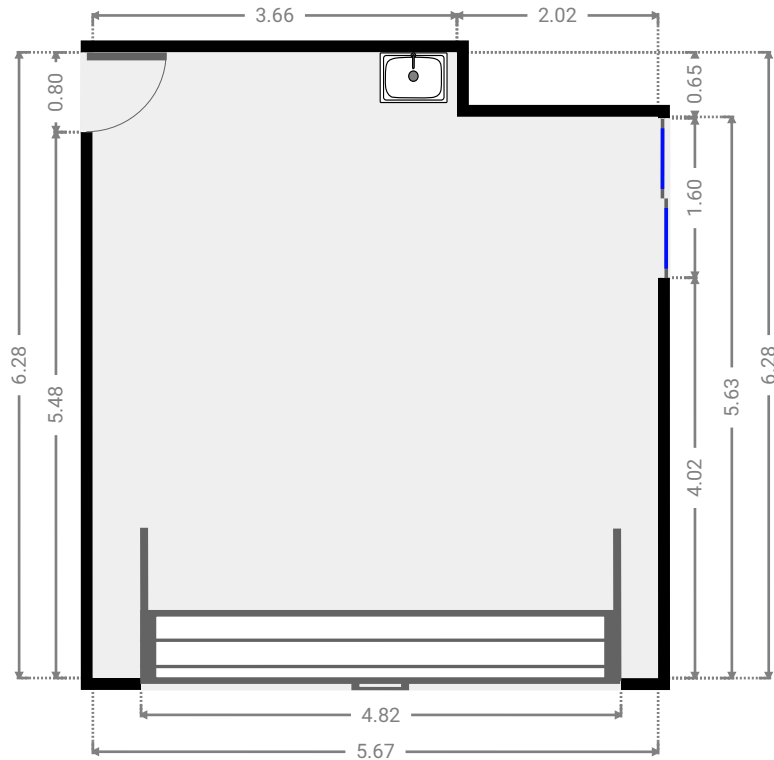
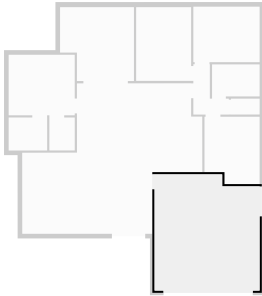
WIDTH: 2.98 m • LENGTH: 3.64 m
AREA: 10.14 m² • PERIMETER: 13.24 m



FLOORS: 1

▼ **Garage**
Ground Floor

WIDTH: 5.67 m • LENGTH: 6.28 m
AREA: 34.33 m² • PERIMETER: 23.91 m



▼ **Patio**
Ground Floor

WIDTH: 3.99 m • LENGTH: 3.99 m
AREA: 14.53 m² • PERIMETER: 15.97 m

